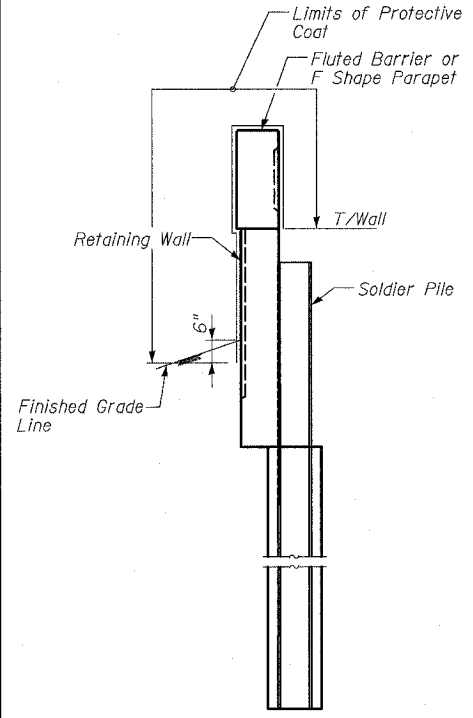


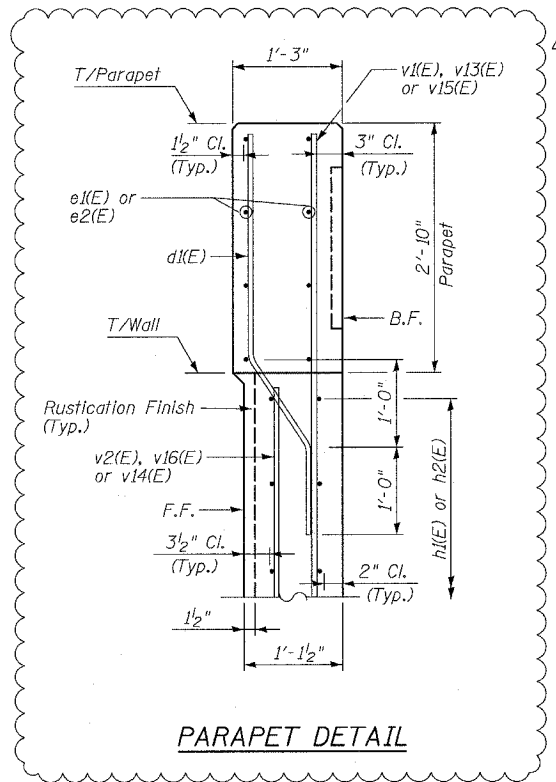
BILL OF MATERIAL

Bar	No.	Size	Length	Shape
d1(E)	475	#5	4'-7"	—
d2(E)	12	#6	5'-5"	—
d3(E)	362	#6	3'-0"	—
d12(E)	28	#5	2'-4"	—
e1(E)	48	#5	23'-8"	—
e2(E)	88	#5	26'-2"	—
e3(E)	8	#5	18'-8"	—
e4(E)	8	#5	31'-2"	—
h1(E)	62	#5	23'-8"	—
h2(E)	116	#5	26'-2"	—
h3(E)	10	#5	18'-8"	—
h4(E)	10	#5	31'-2"	—
v1(E)	50	#6	6'-6"	—
v2(E)	50	#5	3'-8"	—
v3(E)	61	#5	4'-6"	—
v4(E)	37	#6	6'-5"	—
v5(E)	25	#5	2'-7"	—
v6(E)	25	#6	6'-4"	—
v7(E)	12	#6	12'-2"	—
v8(E)	12	#5	8'-6"	—
v9(E)	12	#6	11'-5"	—
v10(E)	12	#5	7'-9"	—
v11(E)	20	#6	5'-6"	—
v12(E)	20	#5	3'-9"	—
v13(E)	12	#6	13'-3"	—
v14(E)	12	#5	7'-7"	—
v15(E)	12	#6	14'-0"	—
v16(E)	12	#5	8'-4"	—
v17(E)	230	#6	5'-6"	—
v18(E)	230	#5	3'-8"	—
Reinforcement Bars, Epoxy Coated			Pound	19,320
Concrete Structures			Cu. Yd.	77.5
Concrete Superstructure			Cu. Yd.	44.8
Chain Link Fence, 42" Attached to Structure (Special)			Foot	95
Rustication Finish			Sq. Ft.	1,413
Protective Coat			Sq. Yd.	277

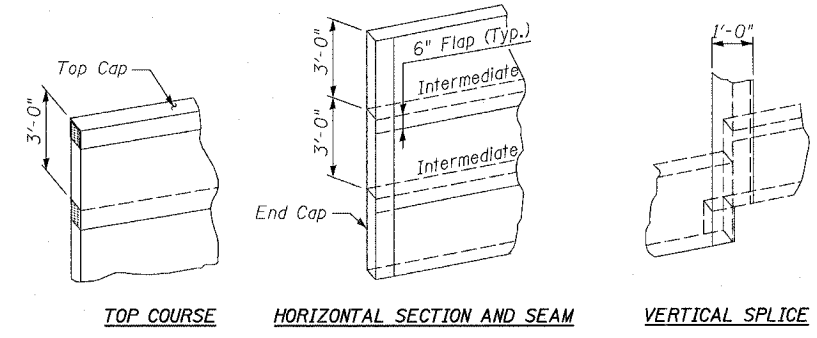


DETAIL OF LIMITS OF PROTECTIVE COAT

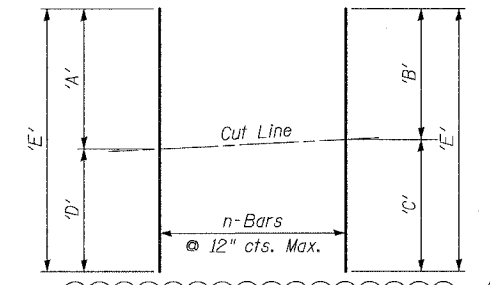
Apply Protective Coat to Front Face only when less than 25'-0" to Ramp E.O.P.



PARAPET DETAIL



GEOCOMPOSITE WALL DRAIN DETAILS

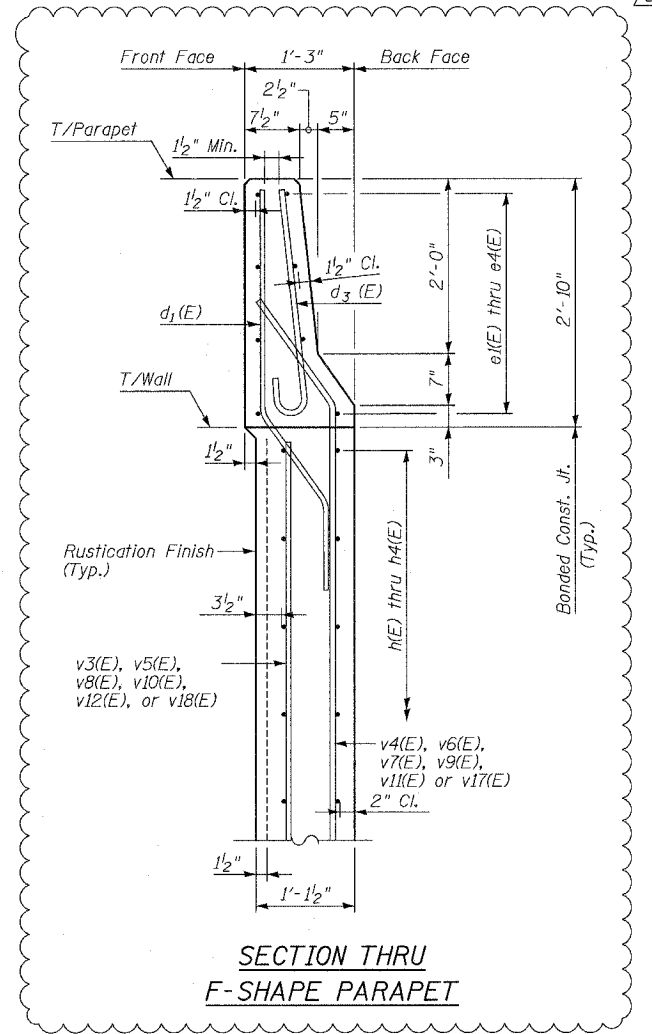


*** BAR CUTTING DIAGRAM**

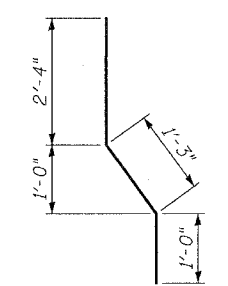
* Order bars v3(E) thru v8(E) and v14(E) thru v18(E) full length, cut as shown and use remainder where indicated. Bend bars after cutting as required.

TABLE OF DIMENSIONS

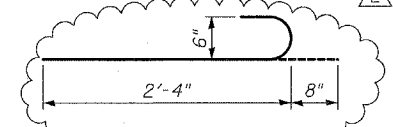
Bar	'A'	'B'	'C'	'D'	'E'	n
v7(E)	6'-3"	6'-1"	6'-1"	5'-11"	12'-2"	12
v8(E)	4'-5"	4'-3"	4'-3"	4'-1"	8'-6"	12
v9(E)	5'-11"	5'-9"	5'-8"	5'-6"	11'-5"	12
v10(E)	4'-1"	3'-11"	3'-10"	3'-8"	7'-9"	12
v13(E)	6'-9"	6'-8"	6'-7"	6'-6"	13'-3"	12
v14(E)	3'-11"	3'-10"	3'-9"	3'-8"	7'-7"	12
v15(E)	7'-3"	7'-0"	7'-0"	6'-9"	14'-0"	12
v16(E)	4'-5"	4'-2"	4'-2"	3'-11"	8'-4"	12



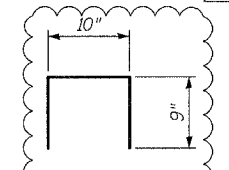
SECTION THRU F-SHAPE PARAPET



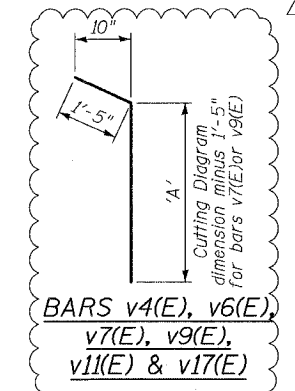
BAR d1(E)



BAR d3(E)



BAR d12(E)



BARS v4(E), v6(E), v7(E), v9(E), v11(E) & v17(E)

Bar	'A'
v4(E)	5'-0"
v6(E)	4'-11"
v11(E)	4'-3"
v17(E)	4'-1"

BOWMAN, BARRETT & ASSOCIATES INC.
CONSULTING ENGINEERS
Chicago, Illinois
312.228.0100
www.bbainc.com

REVISIONS		
NAME	DATE	
REVISED	06/21/06	
ADDENDUM	8/04/06	

SHEET 7 OF 15
ILLINOIS DEPARTMENT OF TRANSPORTATION
F.A.I. 94/90 (DAN RYAN EXPRESSWAY)
GARFIELD BLVD TO 31ST STREET (SB LOCAL LANES)
RETAINING WALL S-47N-R
BILL OF MATERIAL
SCALE: NTS
DATE: JUNE 9, 2006
DRAWN BY: LAM
CHECKED BY: BLU

8/7/2006 9:54 AM