

F.A.I.	SECTION	COUNTY	TOTAL SHEETS	SHEET NO.
94/90	*	COOK	588	413
STA.		TO STA.		
62303		*2021-922 PT2 ETC 2324.6-1P1 R-11		

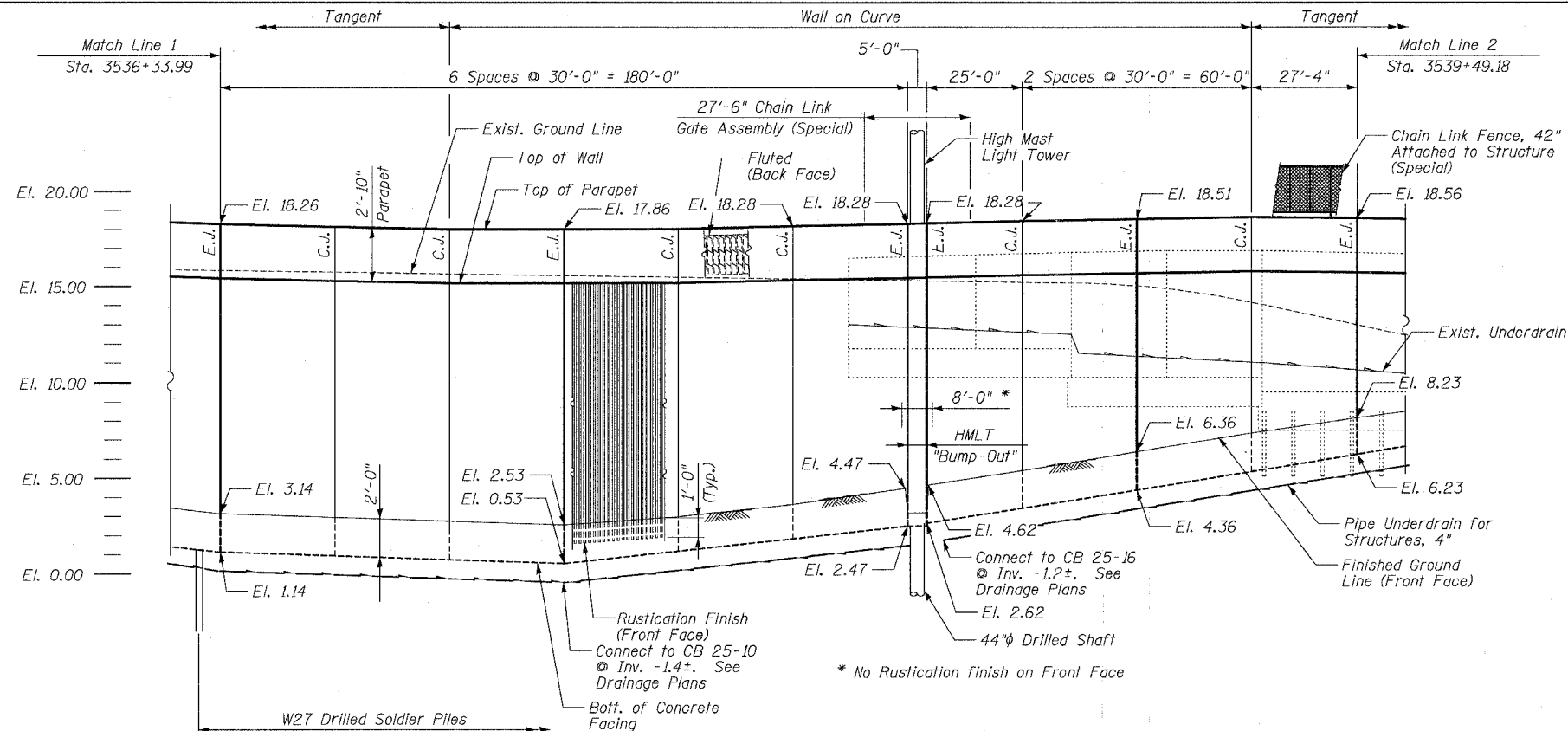
E.O.P. ELEVATIONS

Along Wentworth Ave. at Retaining Wall

Station	Elevation
5070+00	14.85
5069+50	14.76
5069+00	14.71
5068+50	14.79
5068+00	14.95
10+00	15.10
10+50	15.17
11+00	14.98
11+50	14.67
12+00	14.42
12+50	14.67
13+00	14.83
13+50	15.07
14+00	15.13
14+50	14.87
15+00	14.72
15+50	14.69
16+00	14.76
16+50	14.86
17+00	14.94
17+50	15.03
18+00	15.03

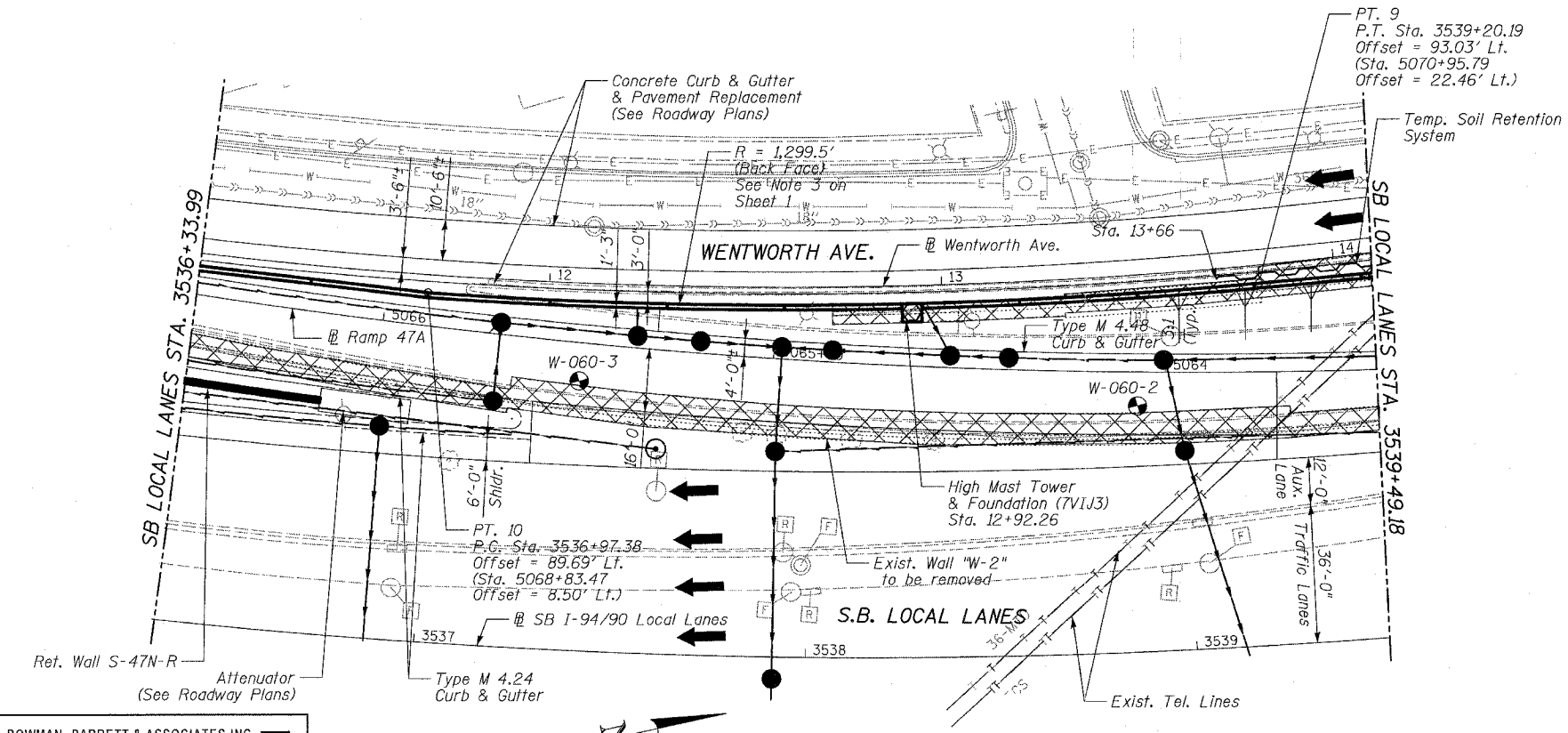
TOTAL BILL OF MATERIAL

Item	Unit	Quantity
Porous Granular Embankment (Special)	Cu. Yd.	194
Removal of Existing Structures No. 2	Each	2
Concrete Removal	Cu. Yd.	44
Structure Excavation	Cu. Yd.	188
Concrete Structures	Cu. Yd.	335.2
Concrete Superstructure	Cu. Yd.	133.2
Protective Coat	Sq. Yd.	1,339
Rustication Finish	Sq. Ft.	9,125
Stud Shear Connectors	Each	2,074
Untreated Timber Lagging	Sq. Ft.	6,569
Furnishing Soldier Piles (W Section)	Foot	3,536
Reinforcement Bars, Epoxy Coated	Pound	63,020
Geocomposite Wall Drain	Sq. Yd.	2,512
Pipe Underdrains for Structures 4"	Foot	772
Temporary Soil Retention System	Sq. Ft.	546
Drilling and Setting Soldier Piles (In Soil)	Cu. Ft.	24,136
Chain Link Fence, 42" Attached to Structure (Special)	Foot	1,000
Chain Link Gate Assembly (Special)	Each	1
Drilled Shaft in Soil, 44"	Foot	26
Pile Extraction	Each	2



PARTIAL FRONT FACE ELEVATION

EJ - Denotes Expansion Joint
CJ - Denotes Construction Joint



PARTIAL PLAN

GENERAL NOTES:

Plan dimensions and details relative to existing structure have been taken from existing plans and are subject to nominal construction variations. It shall be the Contractor's responsibility to verify such dimensions and details in the field and make necessary approved adjustments prior to construction or ordering of materials. Such variations shall not be cause for additional compensation for a change in the scope of the work, however, the Contractor will be paid for the quantity actually furnished at the unit price for the work. All Construction joints shall be bonded.

The Contractor is responsible for the design and performance of the lagging using no less than a 3" nominal rough-sawn thickness and timber with a minimum allowable bending stress f_b of 1000 psi.

All exposed concrete edges shall be chamfered $\frac{3}{4}$ " except as noted.

Protective Coat shall be applied to the top and back face of parapet and to the exposed front face in areas where the wall is within 25 feet of edge of pavement.

LEGEND

- Soil Boring Location
- Proposed Drainage Structure
- Proposed Underdrain
- Proposed Storm Sewer
- Removal of Exist. Structures

SHEET 2 OF 24

REVISIONS	
NAME	DATE
REVISOR	6/14/06
ADDENDUM 2	8/04/06

ILLINOIS DEPARTMENT OF TRANSPORTATION
F.A.I. 94/90 (DAN RYAN EXPRESSWAY)
GARFIELD BLVD TO 31ST STREET (SB LOCAL LANES)
COOK COUNTY
STA. 3532+90.57 TO STA. 3543+57.42
RETAINING WALL S-45S-F
GENERAL PLAN & ELEVATION 2
S.N. 016-W978

SCALE: NTS
DATE: JUNE 9, 2006
DRAWN BY: MTR
CHECKED BY: BLU

BOWMAN, BARRETT & ASSOCIATES INC.
CONSULTING ENGINEERS
Chicago, Illinois
312.228.0100
www.bbandainc.com