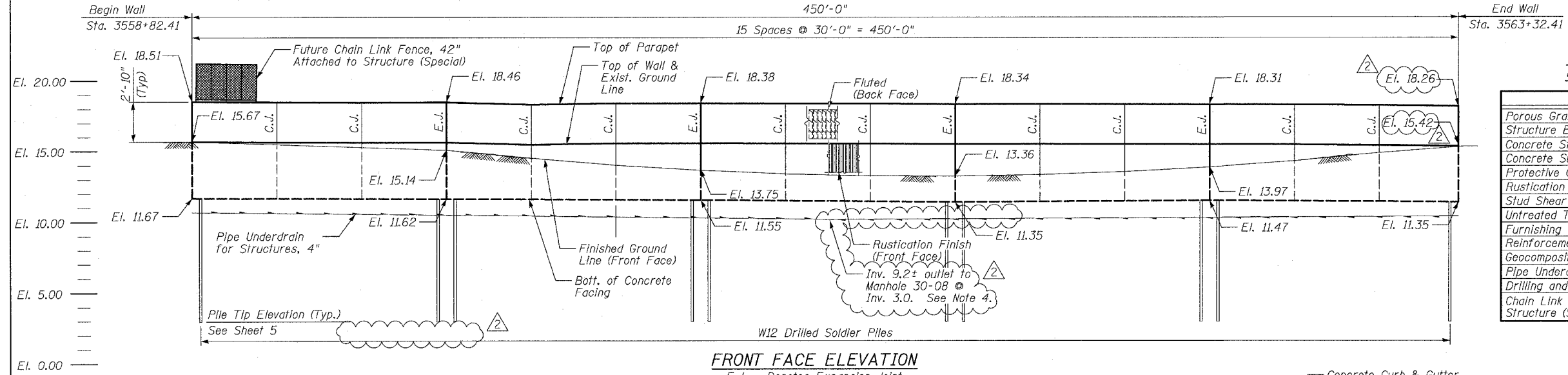


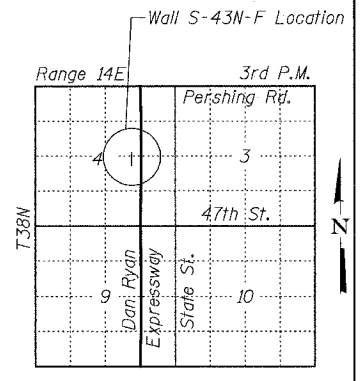
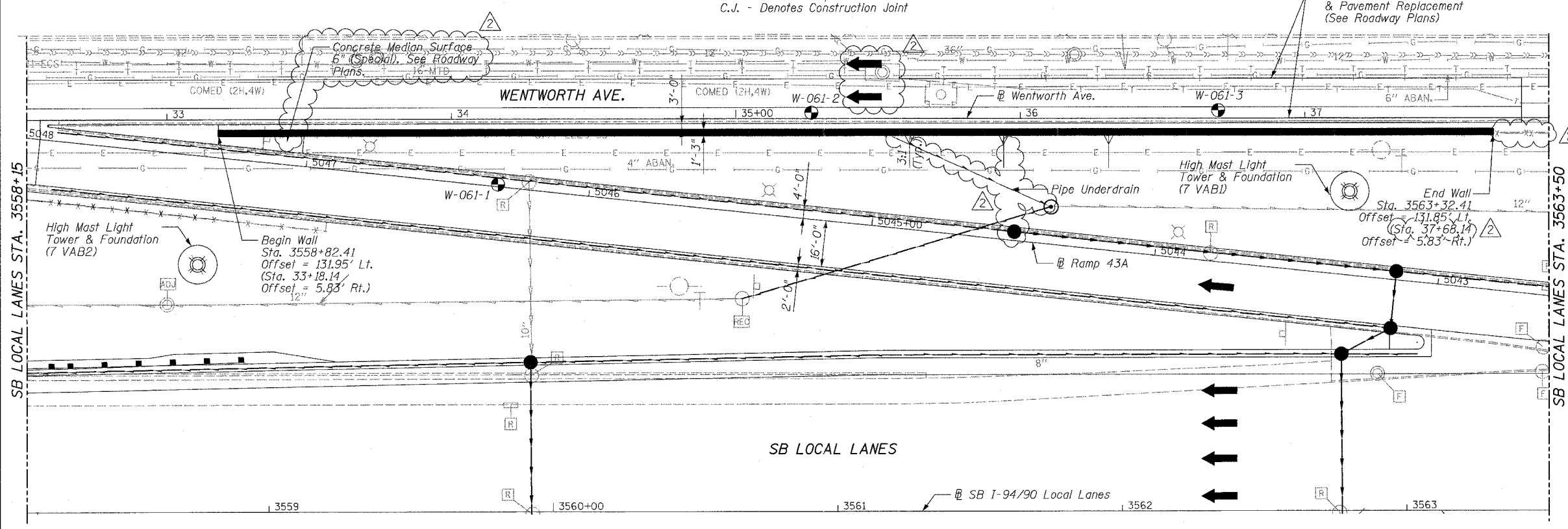
F.A.I.	SECTION	COUNTY	TOTAL SHEET NO.
94/90	*	COOK	588 436
STA.	TO STA.		
FED. ROAD DIST. NO.	ILLINOIS	FED. AID PROJECT	
62303	*2021-922 PT2 ETC 2324.6-1P1 R-11		

Benchmark: BM No. 3527
 "X" Cut on Northerly flange bolt of fire hydrant at the NW corner of Root St. and Wentworth Ave. El. 15.63
 All elevations are based on the Chicago City Datum (C.C.D.)



TOTAL BILL OF MATERIAL

Item	Unit	Quantity
Porous Granular Embankment (Special)	Cu. Yd.	34.72
Structure Excavation	Cu. Yd.	129
Concrete Structures	Cu. Yd.	73.6
Concrete Superstructure	Cu. Yd.	257.2
Protective Coat	Sq. Yd.	292
Rustication Finish	Sq. Ft.	1,681
Stud Shear Connectors	Each	360
Untreated Timber Lagging	Sq. Ft.	1,363
Furnishing Soldier Piles (W Section)	Foot	1,254
Reinforcement Bars, Epoxy Coated	Pound	17,670
Geocomposite Wall Drain	Sq. Yd.	12
Pipe Underdrains for Structures 4"	Foot	505
Drilling and Setting Soldier Piles (In Soil)	Cu. Ft.	3,951
Chain Link Fence, 42" Attached to Structure (Special)	Foot	448



BOWMAN, BARRETT & ASSOCIATES INC.
 CONSULTING ENGINEERS
 Chicago, Illinois
 312.228.0100
 www.bbainc.com

- Notes:
- Offsets given to Front Face of Wall. Station and offsets in parentheses are along Frontage Road or ramp.
 - HMLT, foundations and work pads by others. See Special Provisions for Contractor Cooperation.
 - Min. Facing in contact with soldier pile shall be 3'-0".

- Coordinate pipe underdrain outlet with Drainage Contractor. Outlet shall slope 1% min. See Drainage Plans. Cost included with Pipe Underdrains for Structures, 4".
- See Sheet 5 for PGL along @ Ramp 43A.

- LEGEND**
- Soil Boring Location
 - Proposed Drainage Structure
 - High Mast Lighting Foundation and Tower (See Notes)
 - Proposed Underdrain
 - Proposed Storm Sewer

DESIGN SPECIFICATIONS
 2002 AASHTO

DESIGN STRESSES

FIELD UNITS
 f'c = 3,500 psi
 fy = 60,000 psi (Reinforcement)
 fy = 36,000 psi (M270 Gr 36) Soldier Piles

REVISIONS

NAME	DATE
REVISOR	6/21/06
ADDENDUM 2	8/04/06

SHEET 1 OF 9

ILLINOIS DEPARTMENT OF TRANSPORTATION
 F.A.I. 94/90 (DAN RYAN EXPRESSWAY)
 GARFIELD BLVD TO 31ST STREET (SB LOCAL LANES)

**RETAINING WALL S-43N-F
 GENERAL PLAN AND ELEVATION**

SCALE: NTS
 DATE: JUNE 9, 2006

DRAWN BY: LAM
 CHECKED BY: BLU