

F.A.I.	SECTION	COUNTY	TOTAL SHEETS	SHEET NO.
94/90		COOK	588	437
STA.		TO STA.		
FED. ROAD DIST. NO.		ILLINOIS	FED. AID PROJECT	
62303		*12021-922 PT2 ETC 2324.6-1P1 R-11		

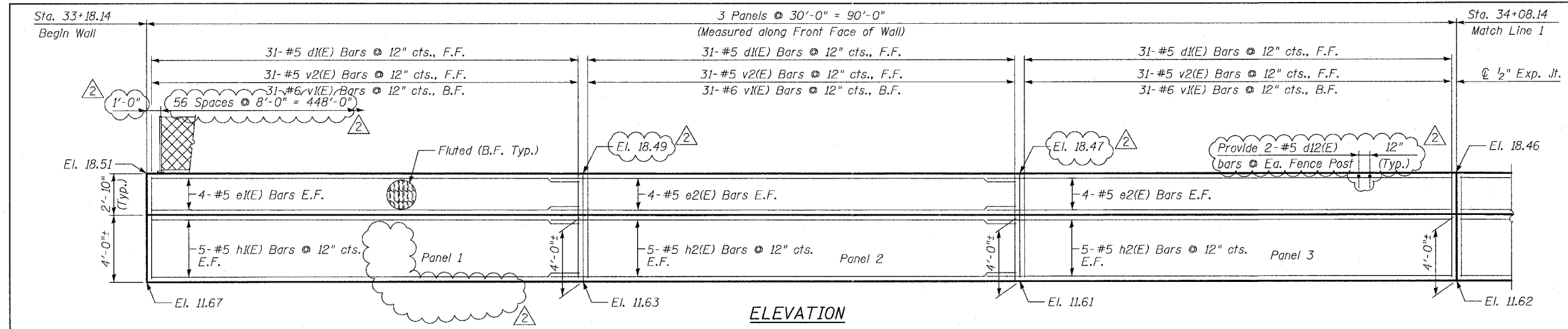
NOTES:

1. Stationing given is @ S. Wentworth Ave. stationing.
2. Facing in Plan Views is scaled 1:2 on an X:Y scale to show reinforcement.
3. See details for reinforcing bar clearances.
4. No rustication finish on front face of Panels 1, 2 & 3.

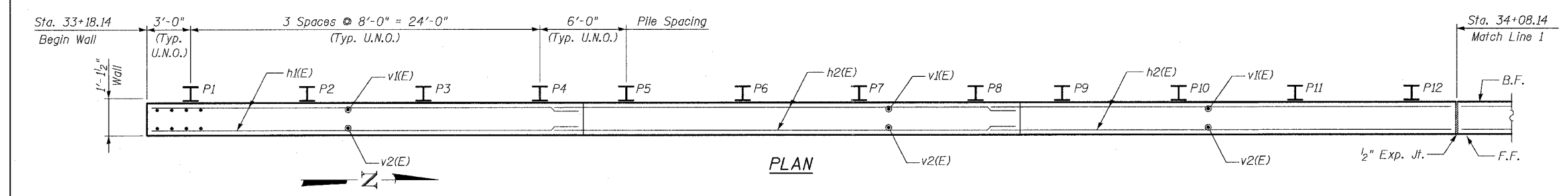
F.F. - denotes Front Face
 B.F. - denotes Back Face
 E.F. - denotes Each Face

MIN BAR LAP

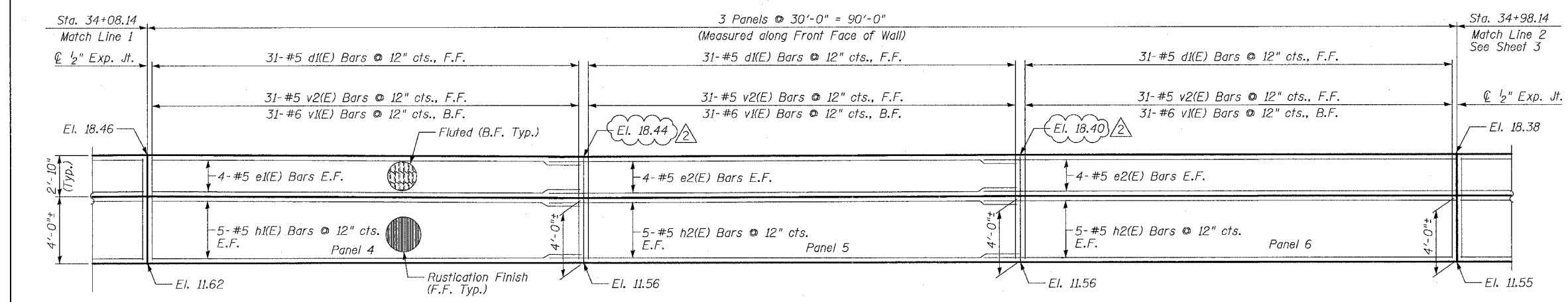
- #5 - 2'-2"
- #6 - 2'-7"



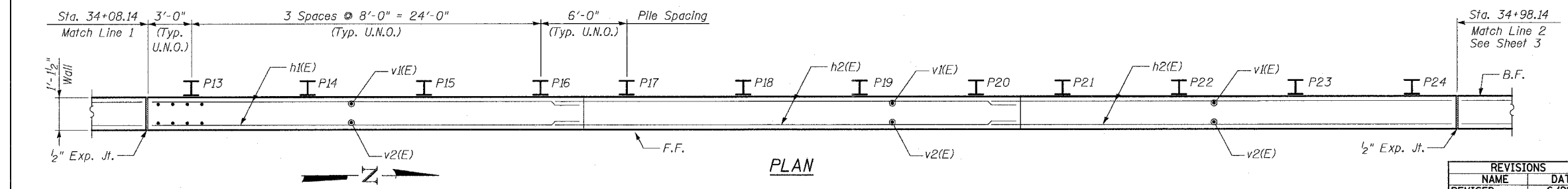
ELEVATION



PLAN



ELEVATION



PLAN

BOWMAN, BARRETT & ASSOCIATES INC.
 CONSULTING ENGINEERS
 Chicago, Illinois 312.228.0100
 www.bbandainc.com

REVISIONS	
NAME	DATE
REVISOR	6/21/06
ADDENDUM 2	8/04/06

ILLINOIS DEPARTMENT OF TRANSPORTATION
 F.A.I. 94/90 (DAN RYAN EXPRESSWAY)
 GARFIELD BLVD TO 31ST STREET (SB LOCAL LANES)
 RETAINING WALL S-43N-F
 WALL DETAILS 1
 SCALE: NTS
 DATE: JUNE 9, 2006
 DRAWN BY: KMW
 CHECKED BY: BLU

14448 7/14/06 8/2/2006