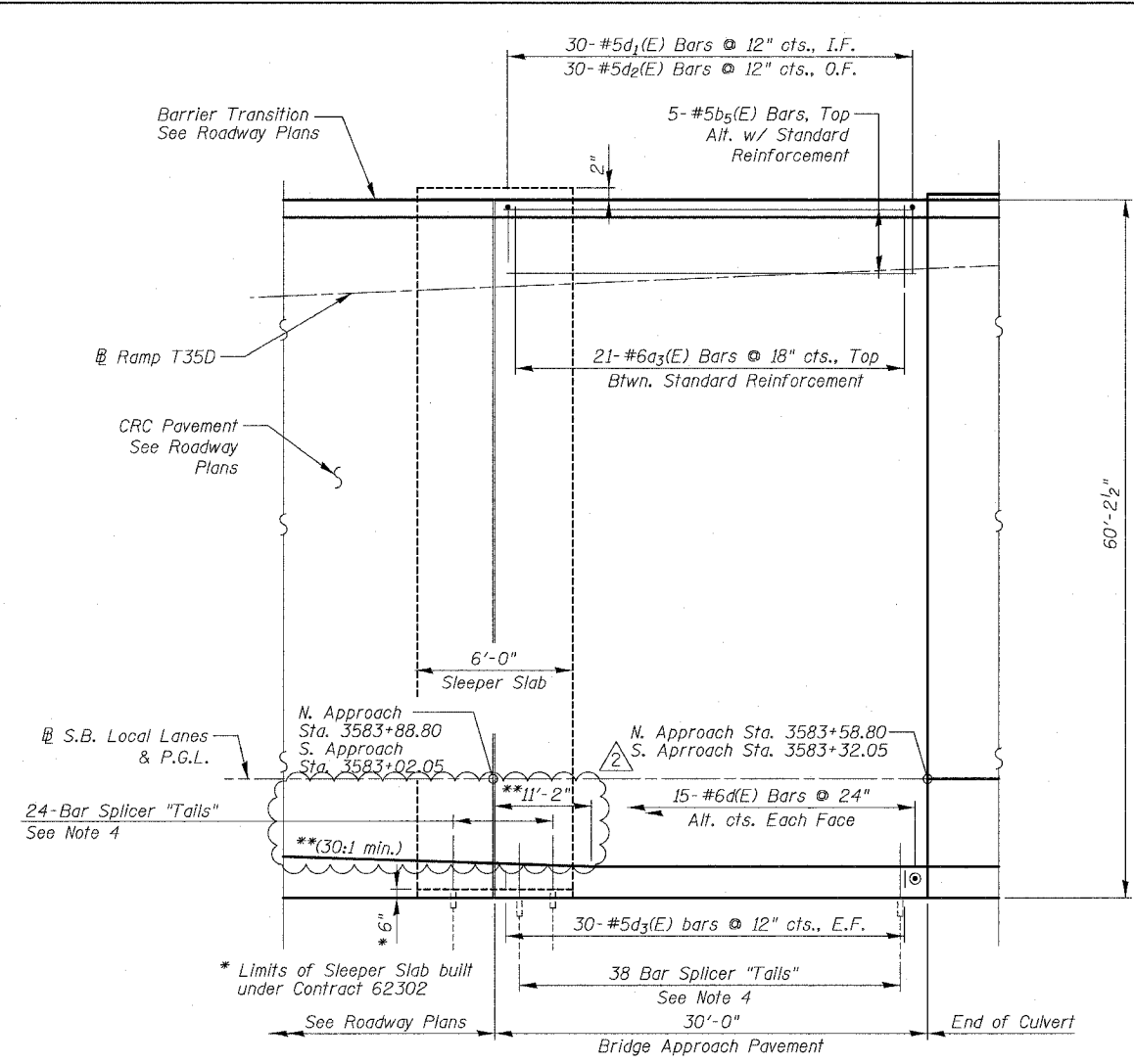
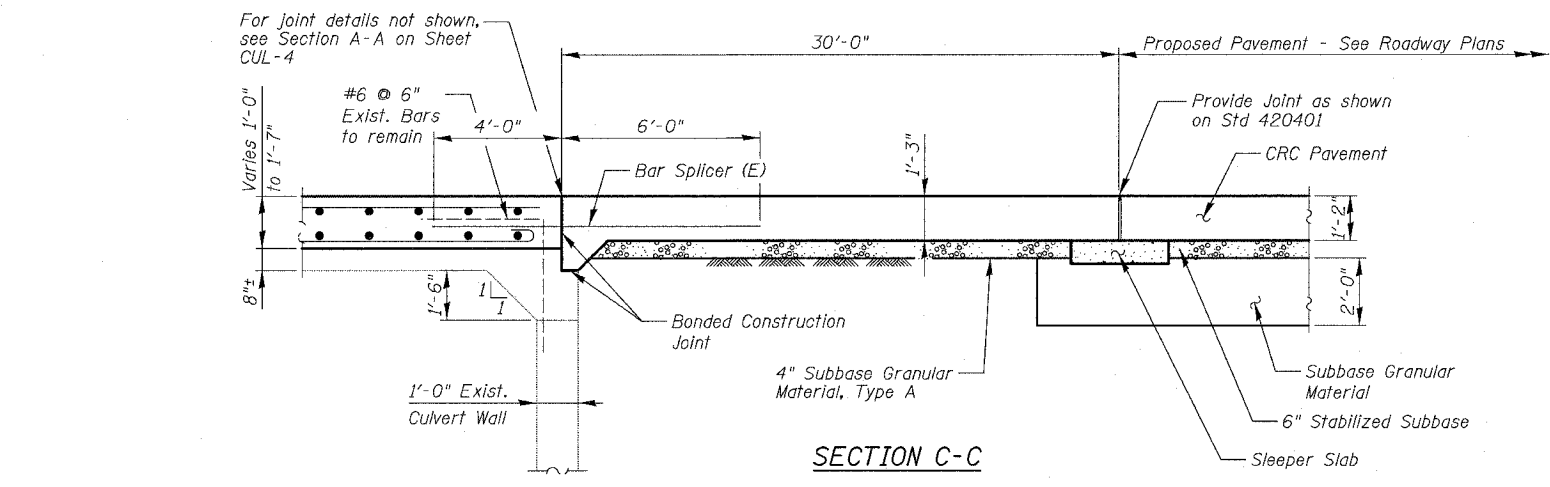


F.A.I.	SECTION	COUNTY	TOTAL SHEETS	SHEET NO.
94/90	*	COOK	588	467
STA.		TO STA.		
FED. ROAD DIST. NO.		ILLINOIS FED. AID PROJECT		
62303		*(2021-922 PT2 ETC 2324.6-1P) R-11		

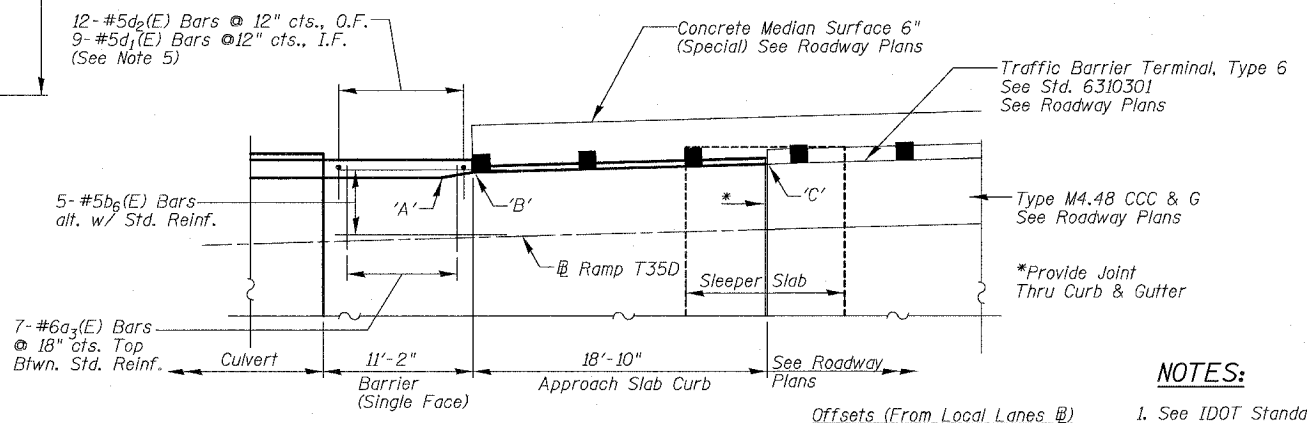


PARTIAL PLAN
South Approach Shown
North Approach Similar as Noted

** Median Barrier tapers to 39th St. bridge pier as shown on Roadway Plans. Width varies on Approach Slab (South only) from 2'-8" to 3'-0."



SECTION C-C



PARTIAL PLAN DETAIL
North Approach

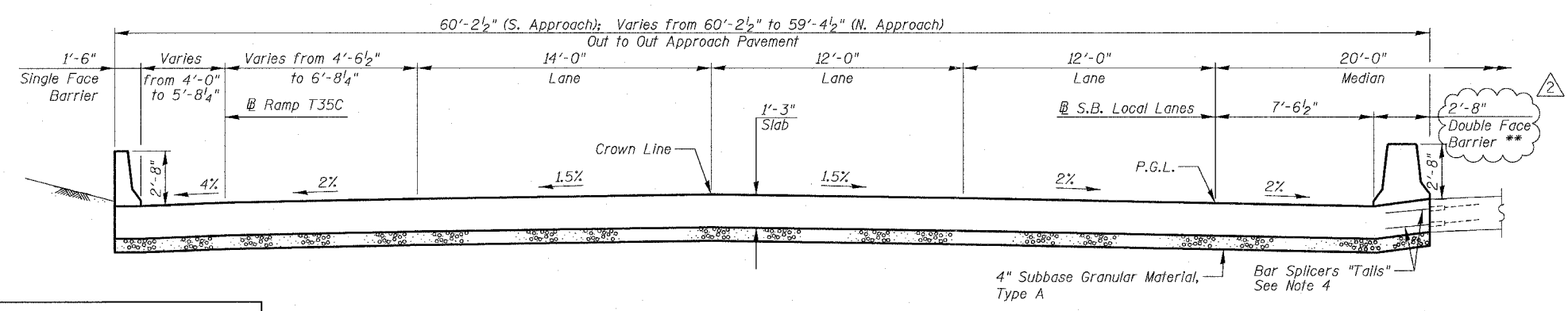
Offsets (From Local Lanes @)
'A' = 48.50'
'B' = 48.92'
'C' = 49.40'

NOTES:

1. See IDOT Standard 420401 for typical approach pavement reinforcing and details
2. Reinforcement Bars designated (E) shall be epoxy coated.
3. See Sheet CUL-7 for Bill of Materials.
4. Contractor shall be provided Bar Splicer "Tails" by Engineer for use in previously placed inserts. Contractor shall exercise care in removing ramp pavement not to damage inserts. Cost of installing "Tails" included with Bar Splicers.
5. Provide 3-#5d3(E) bars @ 12" cts., I.F. @ tapered end.

ABBREVIATIONS:

I.F. = Inside Face
O.F. = Outside Face



SECTION D-D

SHEET CUL-6 OF CUL-16

ILLINOIS DEPARTMENT OF TRANSPORTATION
F.A.I. 94/90 (DAN RYAN EXPRESSWAY)
GARFIELD BLVD TO 31ST STREET (SB LOCAL LANES)
MWRD CULVERT, N. OF 39TH ST.,
COOK COUNTY, S.N. 016-2625
APPROACH SLAB DETAILS 1

REVISIONS	
NAME	DATE
ADDENDUM 2	8/04/06

SCALE: N.T.S. DRAWN BY: MTR
DATE: JUNE 9, 2006 CHECKED BY: BLU

BOWMAN, BARRETT & ASSOCIATES INC.
CONSULTING ENGINEERS
Chicago, Illinois
312.228.0100
www.bbainc.com

11/20/06 8:44:20 AM