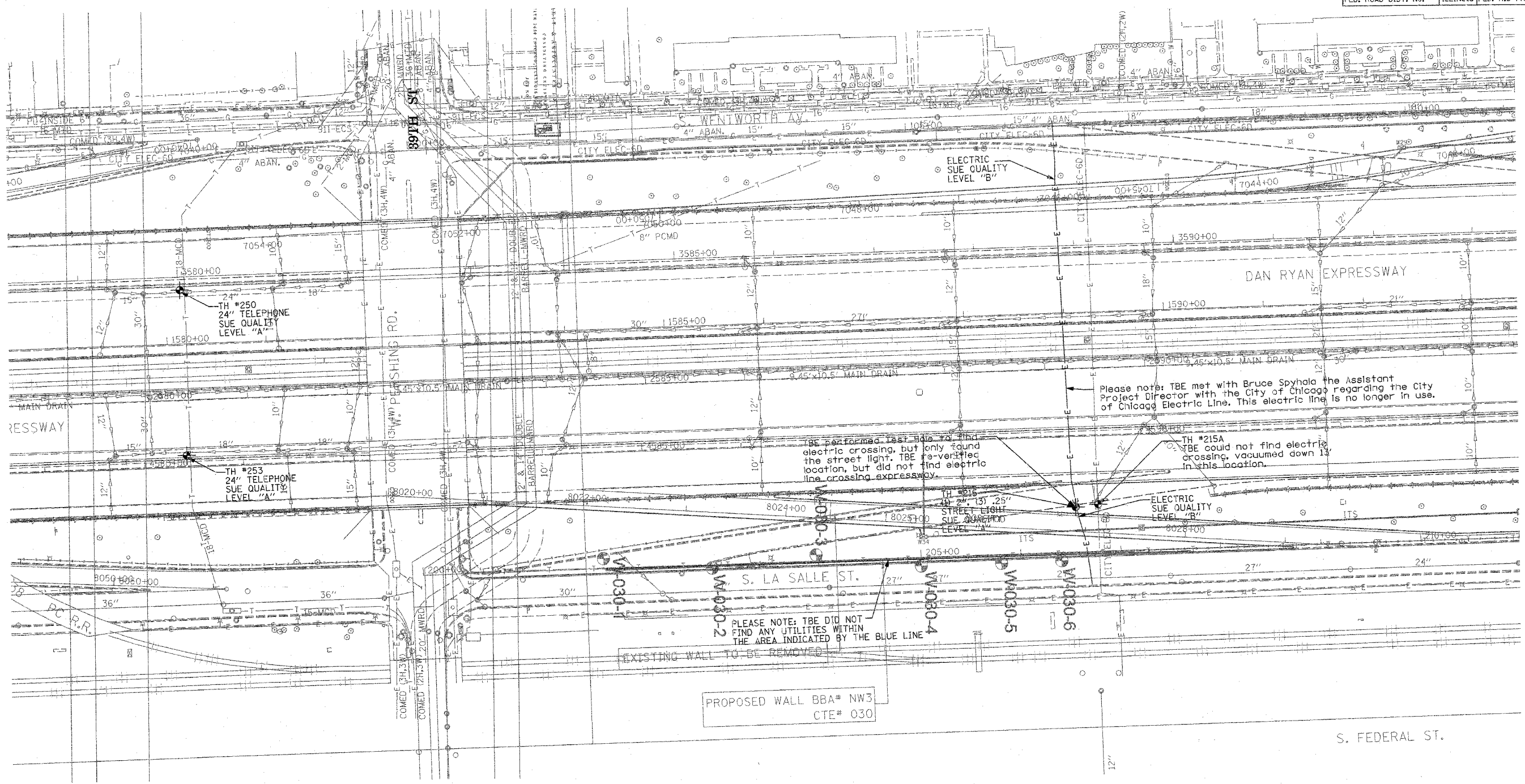


F.A. RTE.	SECTION	COUNTY	TOTAL SHEETS	SHEET NO.
(0516,1717 & 1818-6		Cook	588	199
STA.	TO STA.			
FED. ROAD DIST. NO.	ILLINOIS FED. AID PROJECT			



Please note: TBE met with Bruce Spychala the Assistant Project Director with the City of Chicago regarding the City of Chicago Electric Line. This electric line is no longer in use.

TBE performed test hole to find electric crossing, but only found the street light. TBE re-verified location, but did not find electric line crossing expressway.

TH #215A TBE could not find electric crossing, vacuumed down 13' in this location.

PLEASE NOTE: TBE DID NOT FIND ANY UTILITIES WITHIN THE AREA INDICATED BY THE BLUE LINE

PROPOSED WALL BBA# NW3
CTE# 030

TBE GROUP, INC.
 CIVIL ENGINEERING * TRANSPORTATION * ENVIRONMENTAL
 * PLANNING * UTILITY ENGINEERING/LOCATING
 SOUTHERN REGION: FL, GA, SC, NC
 NORTHERN REGION: IL, IN, MI, OH, MD, NJ, NY
 PA, VA, CANADA
 WESTERN REGION: AZ, NV, NM, TX, CA, OR, UT, WA
 IL09500164, 167, 168, 170, 171, 179, 180, 182, 204, 205, 206,
 211, 212, 219, 221, 225, 226, 227, 228, 230, 232, 250, 251, 252
 TBE SUE PAGE NO: 33 of 36
 Checked by: *Sandra Deas*
 SUE Quality Level "A" : Test Holes
 SUE Quality Level "B" : Designating

—TS—	—TS—	TRAFFIC SIGNAL
—SL—	—SL—	STREET LIGHT
—COCE—		CITY OF CHICAGO ELECTRIC
—T—	—T—	TELEPHONE
—W—	—W—	WATER
—G—	—G—	GAS
—CTV—	—CTV—	CABLE TELEVISION
—FO—	—FO—	FIBER OPTIC
—E—	—E—	ELECTRIC
⊙		TEST HOLE

Utilities shown on these plans as depicted in the legend have been investigated by TBE Group, Inc in accordance with SUE Industry Standards. All other information shown has been provided to TBE Group, Inc by others.

TBE could not locate buried utilities directly beneath the expressway due to traffic and safety issues.

REVISIONS	
NAME	DATE

ILLINOIS DEPARTMENT OF TRANSPORTATION
 SUE Investigation of Underground Utilities
 I-90/I-94 Dan Ryan Expressway from
 I-57 to 69th Street
 Contract Number: 62500, 62301, 62590, 62592, 62594
 SOL "A" DATE : 4/27/04 DRAWN BY : KLC
 SOL "B" DATE : 7/22/04 SCALE : 1" = 50'

205 W. WACKER DRIVE
 SUITE 1020
 CHICAGO, IL 60606
 (312) 704-1970