

F.A.P. RTE.	SECTION	COUNTY	TOTAL SHEETS	SHEET NO.
599	(26-15d)M	ROCK ISLAND	116	1

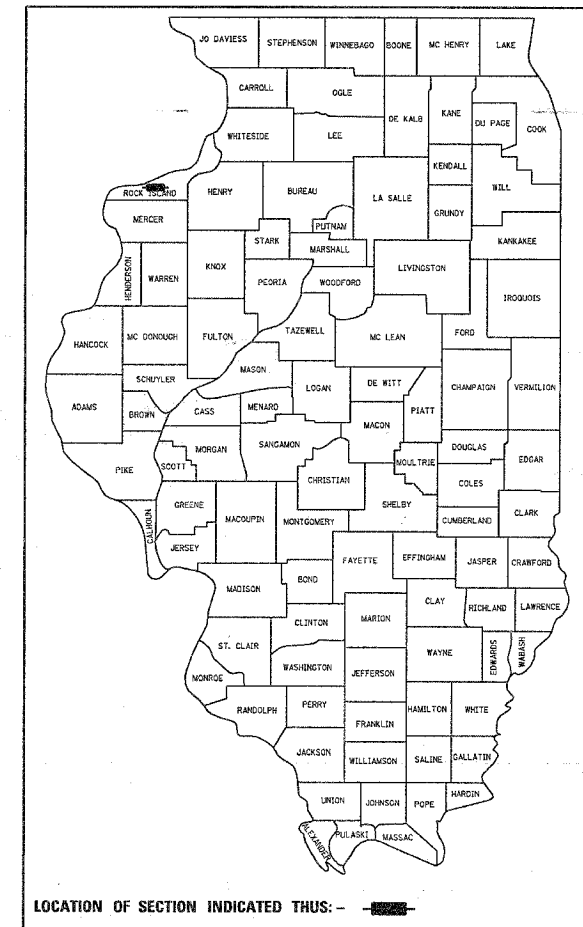
STATE OF ILLINOIS
DEPARTMENT OF TRANSPORTATION
DIVISION OF HIGHWAYS

**PROPOSED
HIGHWAY PLANS**

FAP ROUTE 599 (IL 92)
SECTION (26-15d)M
PROJECT F-0599(021)
ROCK ISLAND COUNTY
C-92-103-06

FOR INDEX OF SHEETS, SEE SHEET NO. 2
FOR STATE STANDARDS, SEE SHEET NO. 2

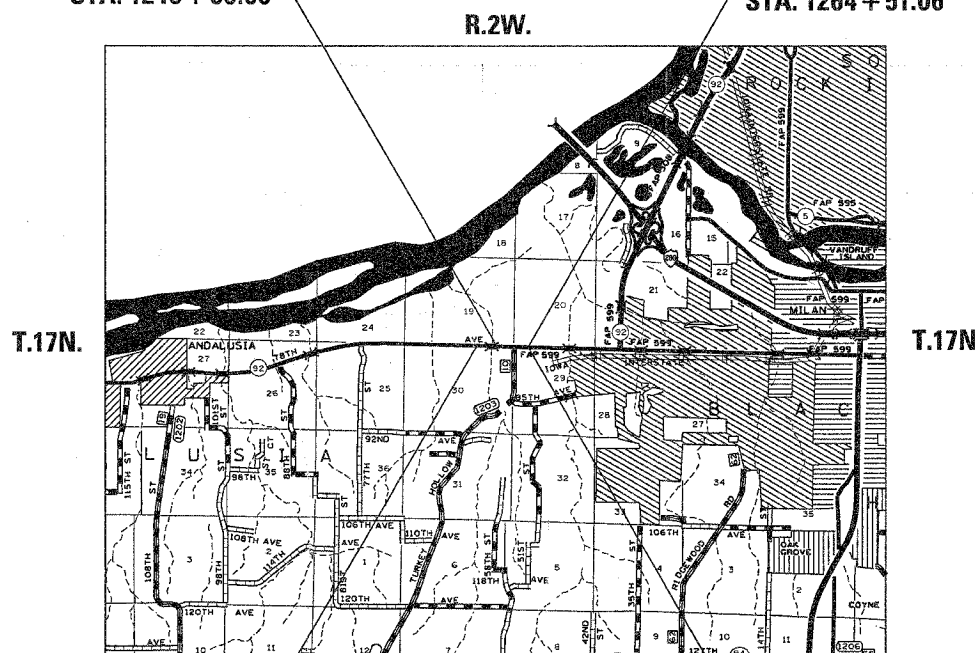
D-92-097-04



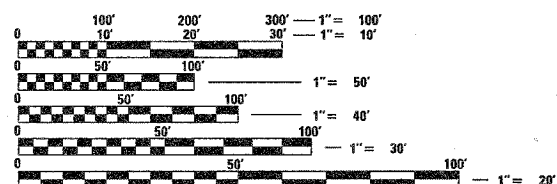
PROJECT ENGINEER: BOB WAGNER (815) 284-5358

BLACKHAWK TOWNSHIP SECTION 19, 20, 29,30

SECTION BEGINS STA. 1240 + 00.00 SECTION ENDS STA. 1264 + 51.06



IMPROVEMENT BEGINS STA. 1236 + 26.67 IMPROVEMENT ENDS STA. 1273 + 65.69



FULL SIZE PLANS HAVE BEEN PREPARED USING STANDARD ENGINEERING SCALES. REDUCED SIZED PLANS WILL NOT CONFORM TO STANDARD SCALES. IN MAKING MEASUREMENTS ON REDUCED PLANS, THE ABOVE SCALES MAY BE USED.

J.U.L.I.E.
JOINT UTILITY LOCATION INFORMATION FOR EXCAVATION
1-800-892-0123

CONTRACT NO. 64A46

NET LENGTH OF PROJECT = 2451.06 LIN. FT = 0.464 MILES
GROSS LENGTH OF PROJECT = 2451.06 LIN. FT = 0.464 MILES

STATE OF ILLINOIS
DEPARTMENT OF TRANSPORTATION
DIVISION OF HIGHWAYS

SUBMITTED June 21, 2006
Sharon L. Mount
DEPUTY DIRECTOR OF HIGHWAYS, REGION ENGINEER

August 18, 2006
Mike Vire
ENGINEER OF DESIGN AND ENVIRONMENT

August 18, 2006
Milton R. Swope PE
DIRECTOR OF HIGHWAYS, CHIEF ENGINEER

**PRINTED BY THE AUTHORITY
OF THE STATE OF ILLINOIS**