

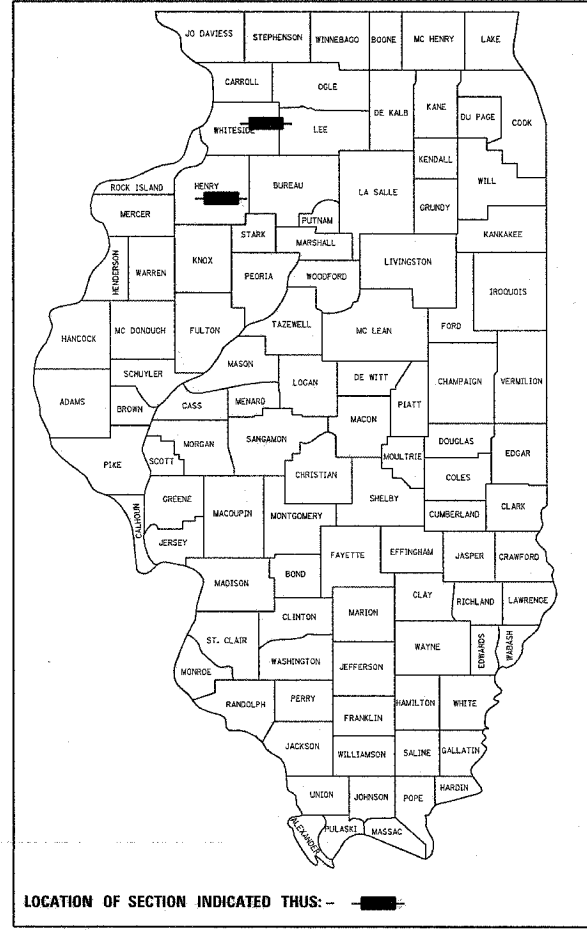
RTE.	SECTION	COUNTY	TOTAL SHEETS	SHEET NO.
*	**	***	17	1

**=FAP 646 & FAP 638
 ***=101BY-D & 137-1B-D
 ****=WHITESIDE & HENRY

D-92-116-06

STATE OF ILLINOIS
 DEPARTMENT OF TRANSPORTATION
 DIVISION OF HIGHWAYS
**PROPOSED
 HIGHWAY PLANS**

FAP ROUTE 646 (IL 40) & FAP 638 (IL 82)
 SECTION 101BY-D & 137-1B-D
 WHITESIDE & HENRY COUNTY
 C-92-151-06

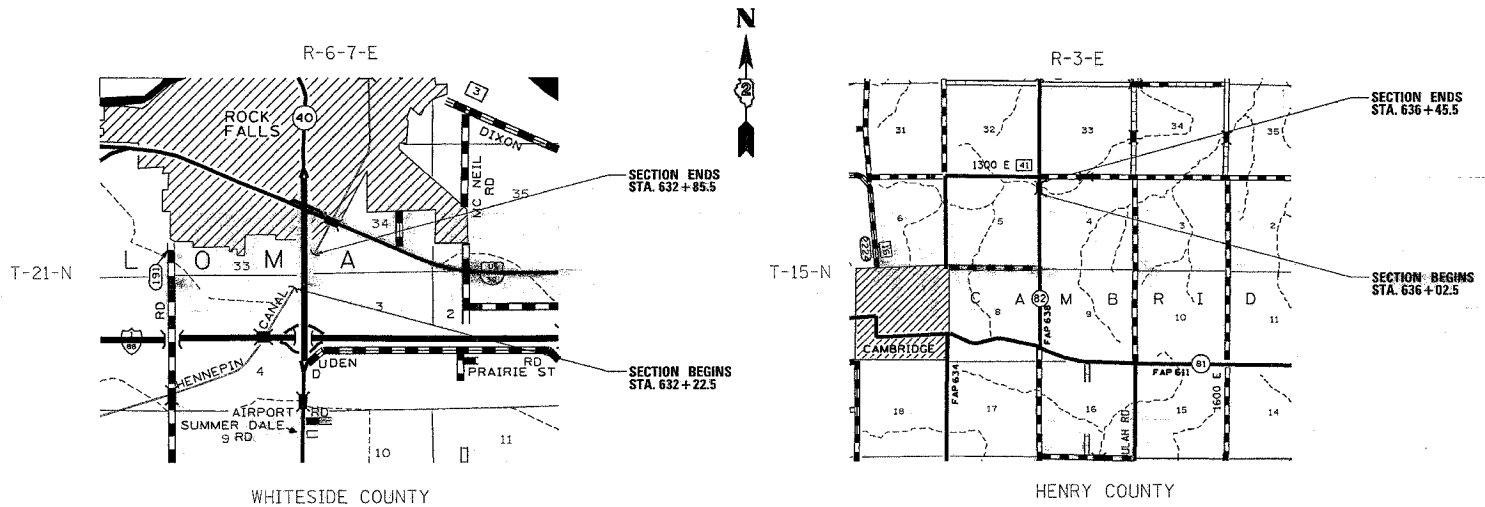


INDEX OF SHEETS

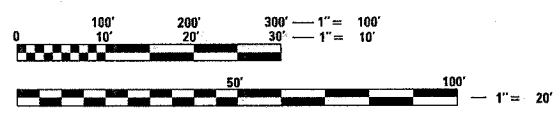
- 1 COVER SHEET
- 2 SUMMARY OF QUANTITIES
- 3 GENERAL NOTES
- 4-5 TYPICAL SECTIONS
- 6 SCHEDULE OF QUANTITIES
- 7-9 BRIDGE PLAN DETAILS FOR STRUCTURE 098-0015
- 10-11 BRIDGE PLAN DETAILS FOR STRUCTURE 037-0106
- 12 STAGING DETAILS
- 13 DETOUR ROUTE DETAIL
- 14 TRAFFIC CONTROL FOR ROAD CLOSURE (STD 40.1)
- 15 TRAFFIC CONTROL FOR ROAD CLOSURE (STD 40.1A)
- 16-17 TYPICAL PAVEMENT MARKINGS (STD 41.1)

STATE STANDARDS

- 000001-04 STANDARD SYMBOLS, ABBREVIATIONS, AND PATTERNS
- 001001 AREAS OF REINFORCEMENT BARS
- 001006 DECIMAL OF AN INCH AND A FOOT
- 701311-02 LANE CLOSURE, 2L, 2W, MOVING OPERATIONS - DAY ONLY
- 701423-01 LANE CLOSURE, MULTILANE, WITH BARRIER, FOR > 45 MPH TO 55 MPH
- 702001-06 TRAFFIC CONTROL DEVICES
- 704001-02 TEMPORARY CONCRETE BARRIER
- 780001-01 TYPICAL PAVEMENT MARKINGS



GROSS LENGTH OF SECTION = 63 FEET = 0.0119 MILES (WHITESIDE)
 GROSS LENGTH OF SECTION = 43 FEET = 0.008 MILES (HENRY)
 NET LENGTH OF SECTION = 63 FEET = 0.0119 MILES (WHITESIDE)
 NET LENGTH OF SECTION = 43 FEET = 0.008 MILES (HENRY)



PROJECT ENGINEER
 MAHMOUD ETEMADI
 PHONE: (815) 284-5393

SQUAD LEADER
 AHMAD EL-AHMAD
 PHONE: (815) 284-5994

FULL SIZE PLANS HAVE BEEN PREPARED USING STANDARD ENGINEERING SCALES. REDUCED SIZED PLANS WILL NOT CONFORM TO STANDARD SCALES. IN MAKING MEASUREMENTS ON REDUCED PLANS, THE ABOVE SCALES MAY BE USED.

J.U.L.I.E.
 JOINT UTILITY LOCATION INFORMATION FOR EXCAVATION
 1-800-892-0123

WHITESIDE COUNTY
 STERLING & COLOMA, SECTION 30 & 31, T. 21-N. & R-6-7-E.
 HENRY COUNTY
 CAMBRIDGE, SECTION 16, T. 15-N. & R-3-E.
CONTRACT NO. 64C67

STATE OF ILLINOIS
 DEPARTMENT OF TRANSPORTATION
 DIVISION OF HIGHWAYS

SUBMITTED July 10, 2006
Gregory Marts
 DEPUTY DIRECTOR OF HIGHWAYS, REGION ENGINEER

August 18, 2006
Mike Nire
 ENGINEER OF DESIGN AND ENVIRONMENT

August 18, 2006
Milton R. See, P.E.
 DIRECTOR OF HIGHWAYS, CHIEF ENGINEER

**PRINTED BY THE AUTHORITY
 OF THE STATE OF ILLINOIS**

DISTRICT 2, DIXON