

RTE.	SECTION	COUNTY	TOTAL SHEETS	SHEET NO.
*	**	***	17	1

**=FAP 646 & FAP 638
 ***=101BY-D & 137-1B-D
 ****=WHITESIDE & HENRY

D-92-116-06

STATE OF ILLINOIS
 DEPARTMENT OF TRANSPORTATION
 DIVISION OF HIGHWAYS
**PROPOSED
 HIGHWAY PLANS**

FAP ROUTE 646 (IL 40) & FAP 638 (IL 82)
 SECTION 101BY-D & 137-1B-D
 WHITESIDE & HENRY COUNTY
 C-92-151-06

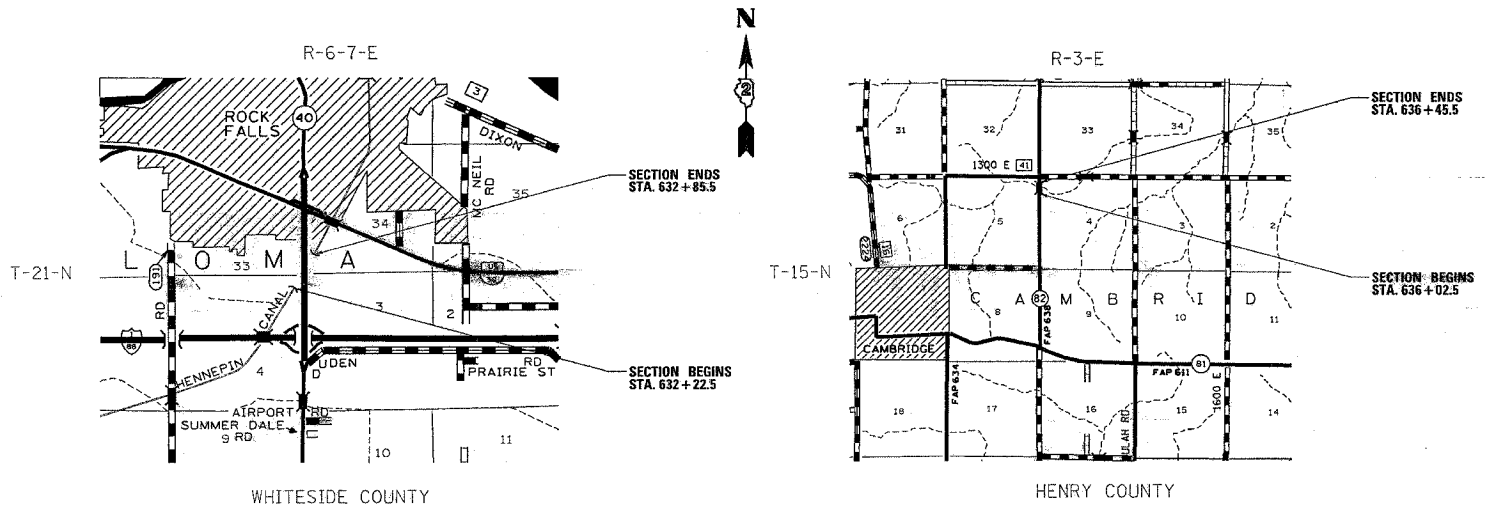


INDEX OF SHEETS

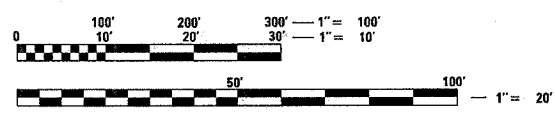
- 1 COVER SHEET
- 2 SUMMARY OF QUANTITIES
- 3 GENERAL NOTES
- 4-5 TYPICAL SECTIONS
- 6 SCHEDULE OF QUANTITIES
- 7-9 BRIDGE PLAN DETAILS FOR STRUCTURE 098-0015
- 10-11 BRIDGE PLAN DETAILS FOR STRUCTURE 037-0106
- 12 STAGING DETAILS
- 13 DETOUR ROUTE DETAIL
- 14 TRAFFIC CONTROL FOR ROAD CLOSURE (STD 40.1)
- 15 TRAFFIC CONTROL FOR ROAD CLOSURE (STD 40.1A)
- 16-17 TYPICAL PAVEMENT MARKINGS (STD 41.1)

STATE STANDARDS

- 000001-04 STANDARD SYMBOLS, ABBREVIATIONS, AND PATTERNS
- 001001 AREAS OF REINFORCEMENT BARS
- 001006 DECIMAL OF AN INCH AND A FOOT
- 701311-02 LANE CLOSURE, 2L, 2W, MOVING OPERATIONS - DAY ONLY
- 701423-01 LANE CLOSURE, MULTILANE, WITH BARRIER, FOR > 45 MPH TO 55 MPH
- 702001-06 TRAFFIC CONTROL DEVICES
- 704001-02 TEMPORARY CONCRETE BARRIER
- 780001-01 TYPICAL PAVEMENT MARKINGS



GROSS LENGTH OF SECTION = 63 FEET = 0.0119 MILES (WHITESIDE)
 GROSS LENGTH OF SECTION = 43 FEET = 0.008 MILES (HENRY)
 NET LENGTH OF SECTION = 63 FEET = 0.0119 MILES (WHITESIDE)
 NET LENGTH OF SECTION = 43 FEET = 0.008 MILES (HENRY)



PROJECT ENGINEER
 MAHMOUD ETEMADI
 PHONE: (815) 284-5393

SQUAD LEADER
 AHMAD EL-AHMAD
 PHONE: (815) 284-5994

FULL SIZE PLANS HAVE BEEN PREPARED USING STANDARD ENGINEERING SCALES. REDUCED SIZED PLANS WILL NOT CONFORM TO STANDARD SCALES. IN MAKING MEASUREMENTS ON REDUCED PLANS, THE ABOVE SCALES MAY BE USED.

J.U.L.I.E.
 JOINT UTILITY LOCATION INFORMATION FOR EXCAVATION
 1-800-892-0123

WHITESIDE COUNTY
 STERLING & COLOMA, SECTION 30 & 31, T. 21-N. & R-6-7-E.
 HENRY COUNTY
 CAMBRIDGE, SECTION 16, T. 15-N. & R-3-E.

CONTRACT NO. 64C67

STATE OF ILLINOIS
 DEPARTMENT OF TRANSPORTATION
 DIVISION OF HIGHWAYS

SUBMITTED July 10, 2006
Gregory Marts
 DEPUTY DIRECTOR OF HIGHWAYS, REGION ENGINEER

August 18, 2006
Mike Hine
 ENGINEER OF DESIGN AND ENVIRONMENT

August 18, 2006
Milton R. See, P.E.
 DIRECTOR OF HIGHWAYS, CHIEF ENGINEER

PRINTED BY THE AUTHORITY
 OF THE STATE OF ILLINOIS

DISTRICT 2, DIXON

GENERAL NOTES

ROUTE NO.	SEC.	COUNTY	TOTAL SHEETS	SHEET NO.
FAP 646 (IL 40) & FAP 638 (IL 82)	101BY-D & 137-1B-D	Whiteside & Henry	17	3
FED ROAD DIST. NO.	ILLINOIS	PROJECT		
Contract #64C67				

Any disturbed area caused by construction shall be seeded using Class 2A by the Contractor at his expense with no cost to the Department.

The following Mixture Requirements are applicable for this project:

	IL 40	IL 82
Mixture Uses(s):	Mainline Surface Course	Mainline Surface Course
PG:	PG 64-22	PG 64-22
RAP%: (Max)	15%	15%
Design Air Voids	4.2 @ N50	4.2 @ N50
Mixture Composition (Gradation Mixture)	IL 9.5 or 12.5	IL 9.5 or 12.5
Friction Aggregate	D	C
20 Year ESAL	2.3	0.7

Bituminous prime coat shall be placed in accordance with Section 406 of the Standard Specifications. The cost of the prime coats shall be included in the contract unit price per ton for BITUMINOUS CONCRETE SURFACE COURSE, SUPERPAVE Mix "D", N50.

These structures will retain the same numbers SN 098-0015 & 037-0106.

Pavement Marking shall be done according to Standard 780001, except as follows:

1. All words, such as ONLY, shall be 2.4 m (8 feet) high.
2. All non-freeway arrows shall be the large size.
3. The distance between yellow no-passing lines shall be 200 mm (8"), not 180 mm (7") as shown in the detail of Typical Lane and Edge Lines.

All work on the structures over the Hennepin Feeder Canal & the north branch of Spring Creek, shall be performed from the existing deck and that no work shall take place below the existing structure on the ground.

No vehicles or materials shall be parked or stored outside the state right-of-way

No vehicles or materials shall be parked or stored on the Hennepin Feeder Canal property, which is owned by the Illinois Department of Natural Resources

The bike path located on the west towpath of the Hennepin Feeder Canal shall not be closed for any duration to exceed one hour.

The Contractor shall be responsible for protecting utility property during construction operations as outlined in Article 107.31 of the Standard Specifications. A minimum of 48 hours advance notice is required for non-emergency work. The JULIE number is 800-892-0123. The following listed utilities located within the project limits or immediately adjacent to the project construction limits are members of JULIE:

Commonwealth Edison Co.
AT&T
NICOR Gas Co.
Insight Communications of Rockford
Lightcore

Cambridge Telephone
Corn Belt Energy Corp.
City of Rock Falls
Norlight Telecommunications
Aldridge Electric

Program #5
(Arch. Size)
Enlarge
200%
Enlarge 107%

EXISTING TYPICAL SECTIONS

(SN 098-0015)

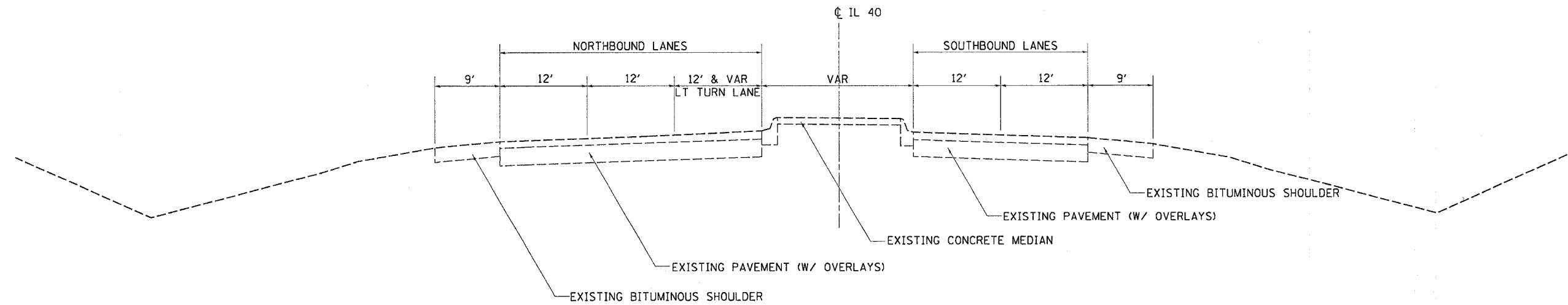
CONTRACT NO. 64C67

F.A.P. RTE.	SECTION	COUNTY	TOTAL SHEETS	SHEET NO.
*	**	***	17	4
STA.		TO STA.		
FED. ROAD DIST. NO.	ILLINOIS	FED. AID PROJECT		

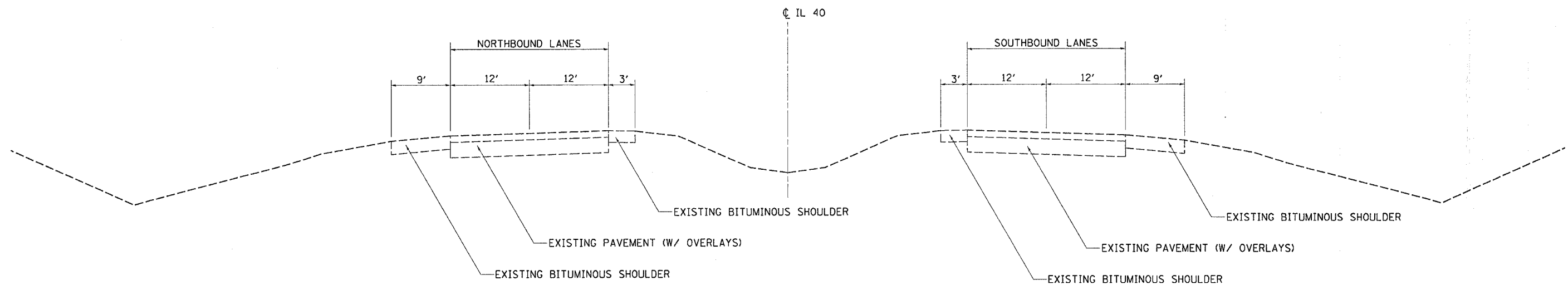
**=FAP 646 & FAP 638
 ***=101BY-D & 137-1B-D
 ****=WHITESIDE & HENRY

ROADWAY ON THE NORTH SIDE OF STRUCTURE

(FOR INFORMATION ONLY)



ROADWAY ON THE SOUTH SIDE OF STRUCTURE



PLT DATE = Mon Jul 19 10:29:00 2005
 FILE NAME = I:\211885\211885.dgn
 PLOT SCALE = 50.0000 / IN.
 USER NAME = geff.j

REVISIONS	
NAME	DATE

ILLINOIS DEPARTMENT OF TRANSPORTATION

SCALE: VERT.
 HORIZ.
 DATE

DRAWN BY
 CHECKED BY

EXISTING TYPICAL SECTIONS

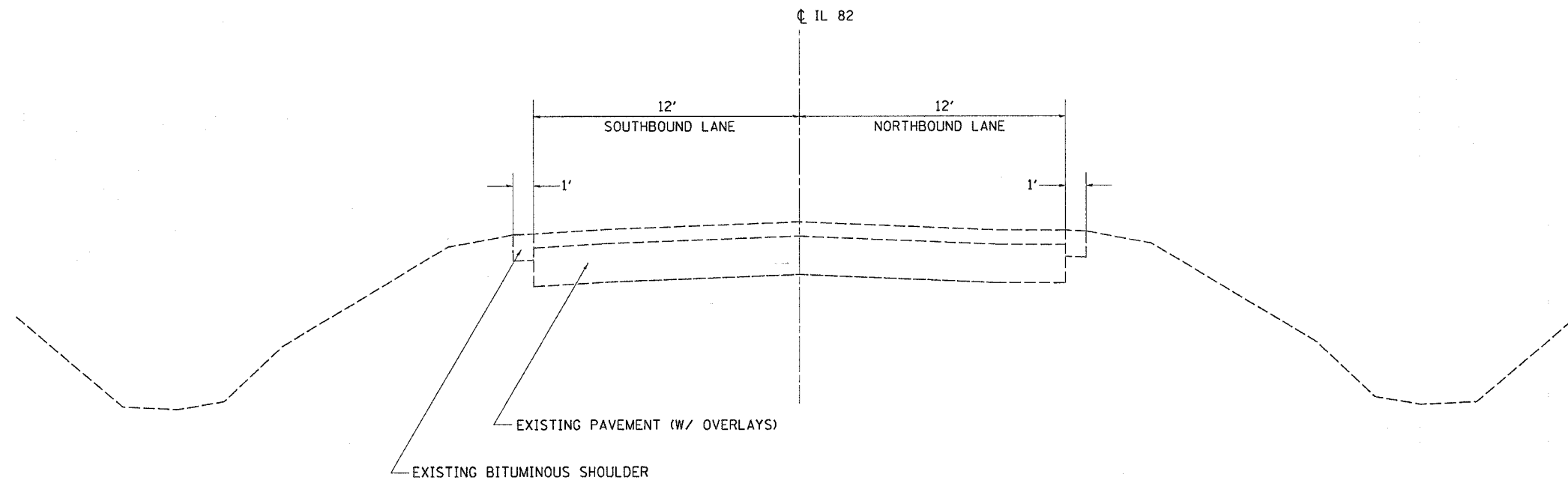
EXISTING TYPICAL SECTIONS

(SN 037-0106)

F.A. RTE.	SECTION	COUNTY	TOTAL SHEETS	SHEET NO.
*	**	***	17	5
STA.		TO STA.		
FED. ROAD DIST. NO.		ILLINOIS	FED. AID PROJECT	
=FAP 646 & FAP 638 *=101BY-D & 137-1B-D ****=WHITESIDE & HENRY				

(FOR INFORMATION ONLY)

ROADWAY ON THE NORTH & SOUTH SIDES OF STRUCTURE



PLOT DATE = Mon Jul 10 10:56:08 2006
 FILE NAME = c:\p\o\p\p\p\211606\111606.dgn
 PLOT SCALE = 50.0000' / 1"
 USER NAME = gorfj

REVISIONS	
NAME	DATE

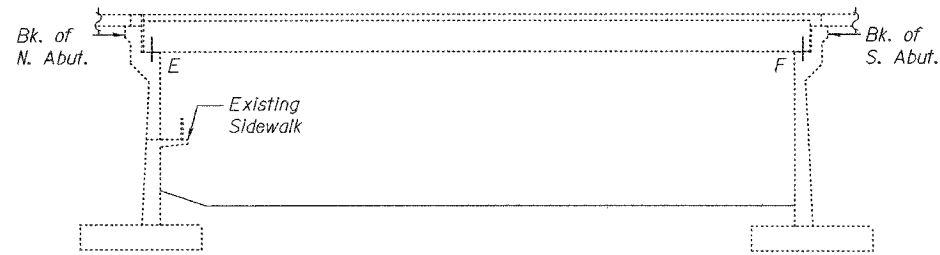
ILLINOIS DEPARTMENT OF TRANSPORTATION

SCALE: VERT. DRAWN BY
 DATE HORIZ. CHECKED BY

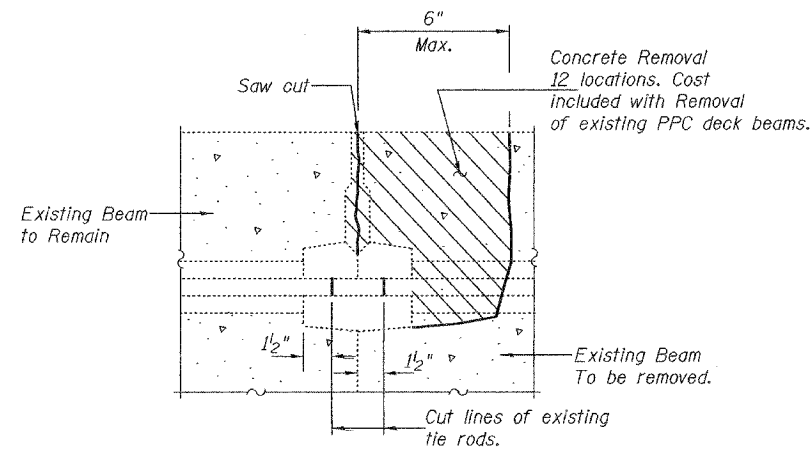
STATE OF ILLINOIS
DEPARTMENT OF TRANSPORTATION

ROUTE NO.	SECTION	COUNTY	TOTAL SHEETS	SHEET NO.
		Whiteside	-	7
SHEET NO. 1 3 SHEETS				
FED. ROAD DIST. NO. 7	ILLINOIS	FED. AID PROJECT		

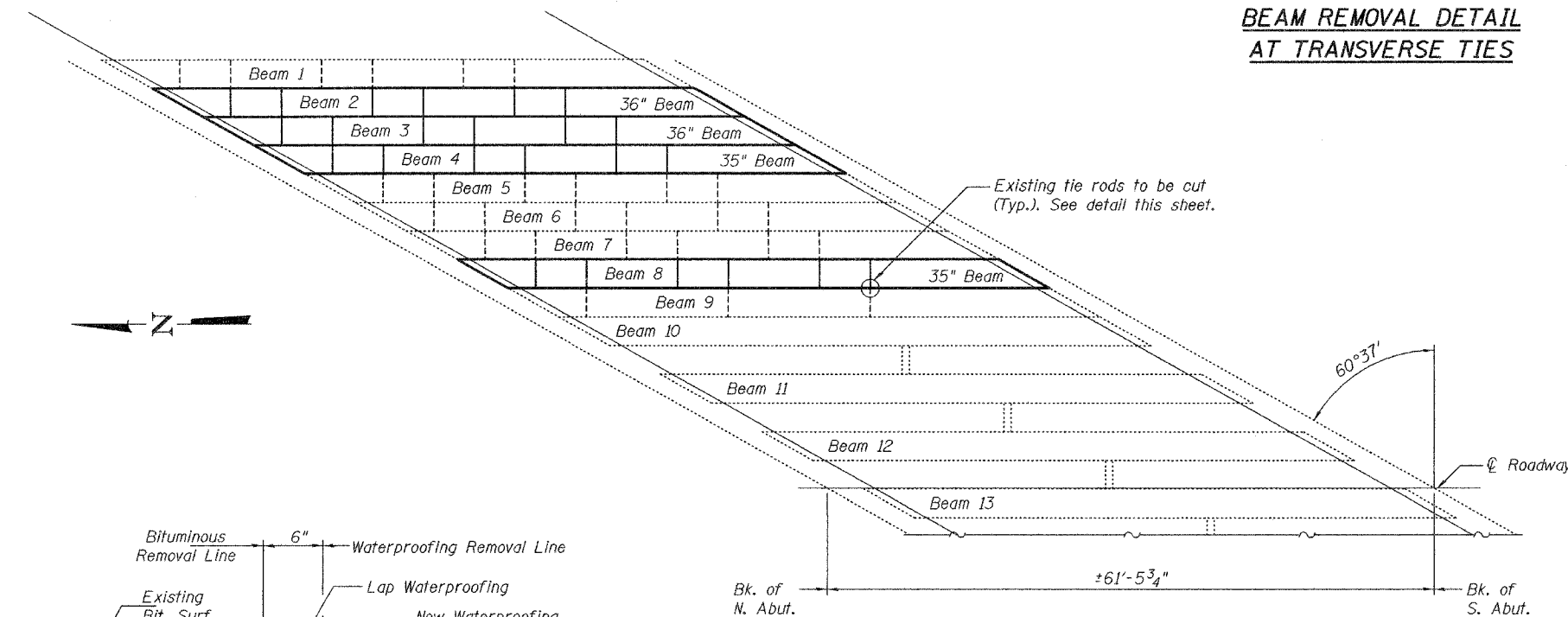
Contract Number: 64C67



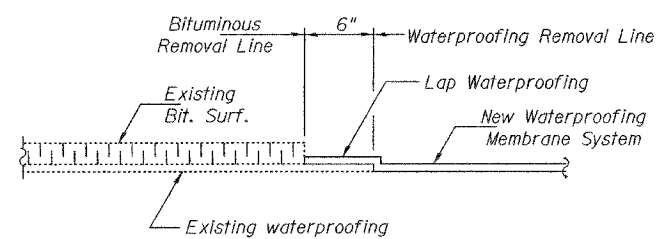
ELEVATION



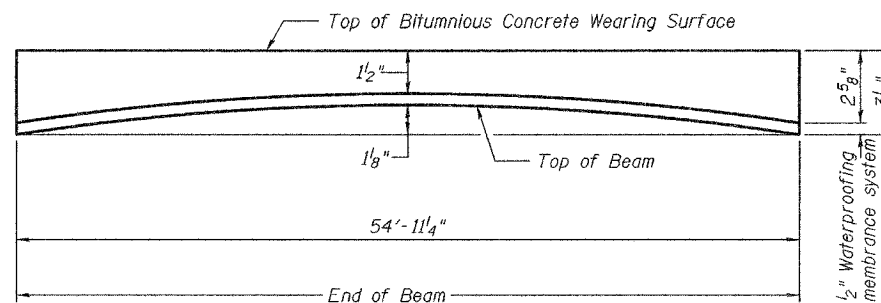
**BEAM REMOVAL DETAIL
AT TRANSVERSE TIES**



PLAN



WATERPROOFING TREATMENT



ANTICIPATED INITIAL CAMBER DIAGRAM

GENERAL NOTES

Plan dimensions and details relative to existing structure have been taken from existing plans and are subject to nominal construction variations. It shall be the Contractor's responsibility to verify such dimensions and details in the field and make necessary approved adjustments prior to construction or ordering of materials. Such variations shall not be cause for additional compensation for a change in the scope of the work, however, the Contractor will be paid for the quantity actually furnished at the unit price bid for the work.

The cut strands at each beam end shall be given two coats of zinc dust spray or paint meeting the requirements of ASTM A780. The zinc dust spray or paint shall be applied before corrosion appears and allowed to dry according to manufacturer's specifications prior to another coat of zinc. This work shall be performed by the producer and included with the cost of the beam.

Any damage done to the bridge during beam removal shall be repaired by the Contractor. Cost to be included in the cost of Removal of Existing PPC Deck Beams.

The top surface of the beams shall be finished in accordance with Article 504.06 of the Standard Specifications except that the surface shall not be roughened by brooming. The finished surface shall be free of depressions or high spots with sharp corners, and the top edge of keys shall be rounded or chamfered a minimum of 1/4".

If required to be anchored, temporary concrete barrier shall only be anchored into the overlay and not the PPC Deck Beams.

All construction joints shall be bonded.

See Roadway Plans for Stage Construction Details.

The minimum thickness of the Bituminous concrete overlay shall be 1 1/2" and varies as required to adjust for the existing profile grade and beam camber.

All structural steel shall be shop painted with the inorganic zinc rich primer per AASHTO M300, Type 1. Cost included with Furnishing and Erecting Structural Steel.

TOTAL BILL OF MATERIAL

ITEM	UNIT	QUANTITY
Removal of Existing PPC Deck Beams	Sq. Ft.	659
PPC Deck Beams (27" Depth)	Sq. Ft.	650
PC Mortar Fairing Course	Foot	330
Waterproofing Membrane System	Sq. Yd.	91.7
Asbestos Bearing Pad Removal	Each	4
Bituminous Concrete Surface Course, Superpave Mix "D" N50	Ton	10.3
Furnishing and Erecting Structural Steel	Pound	210
Bituminous Concrete Surface Removal	Sq. Yd.	18.5
Silicone Joint Sealer, 1/2"	Foot	25

**DESIGN STRESSES
PRECAST UNITS**

$f'_c = 5,000$ psi
 $f'_{ci} = 4,000$ psi
 $f'_s = 270,000$ psi ($1/2"$ ϕ low lax strands)
 $f'_{si} = 201,960$ psi ($1/2"$ ϕ low lax strands)

**PLAN AND ELEVATION
IL 40 / HENNEPIN CANAL FEEDER
WHITESIDE COUNTY
SN 098-0015**

DESIGNED *Paul S. Johnson*
 CHECKED *Paul S. Johnson*
 DRAWN *[Signature]*
 CHECKED *S.J.B. / P.S.*

August 4, 2006
 EXAMINED *John A. Morris*
 ENGINEER OF STRUCTURAL SERVICES
 PASSED *Ralph E. Anderson*
 ENGINEER OF BRIDGES AND STRUCTURES

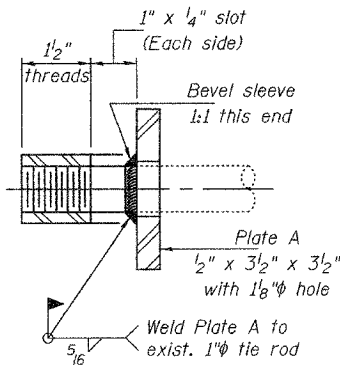
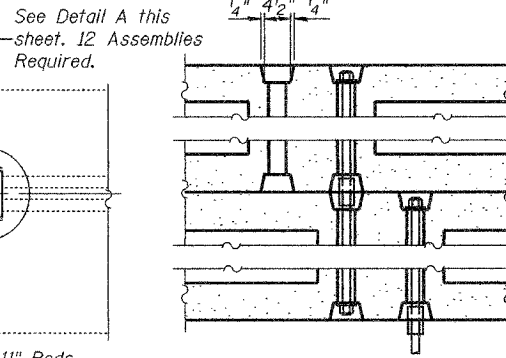
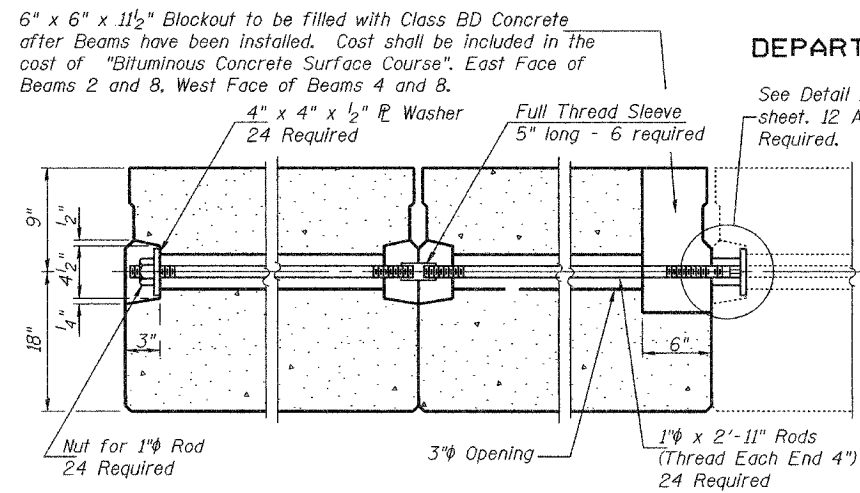
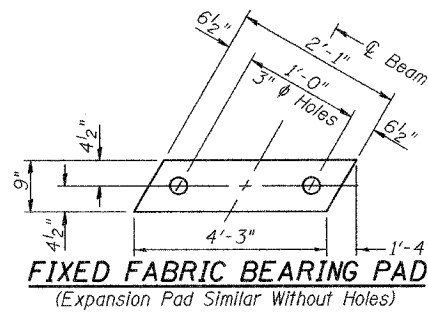


Expires: November 30, 2006

STATE OF ILLINOIS
DEPARTMENT OF TRANSPORTATION

ROUTE NO.	SECTION	COUNTY	TOTAL SHEETS	SHEET NO.
		Whiteside	8	8
Contract Number: 64C67				

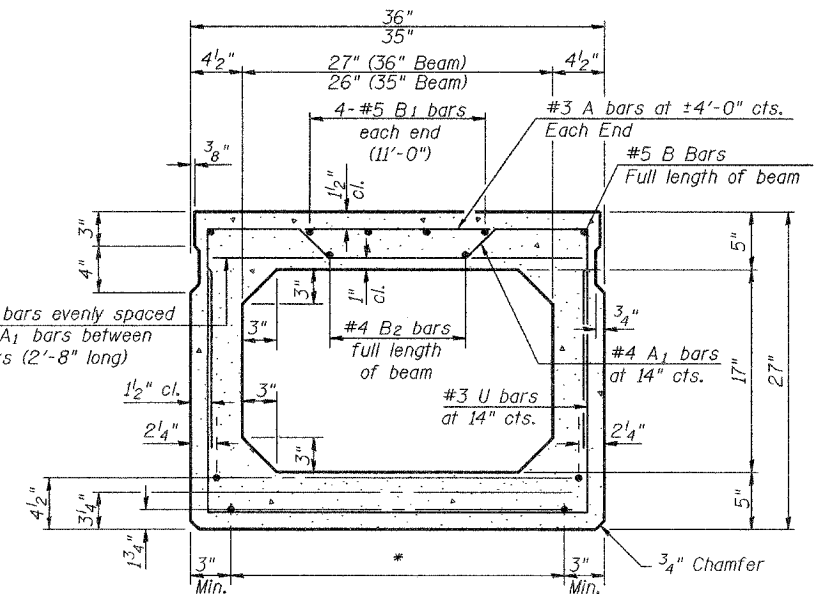
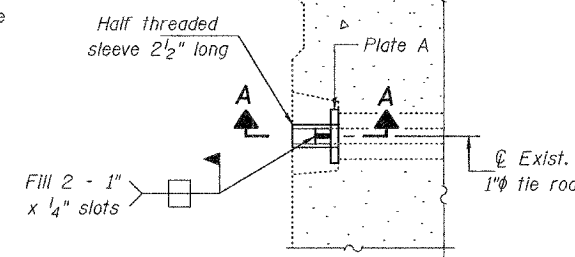
3 SHEETS



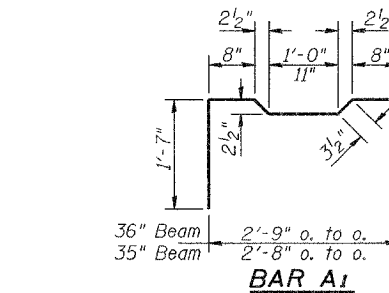
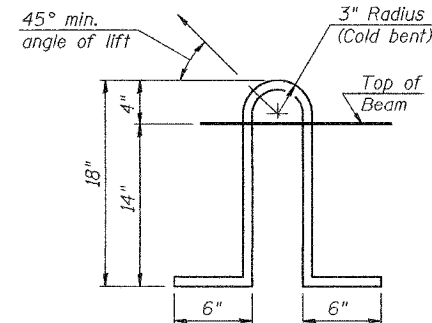
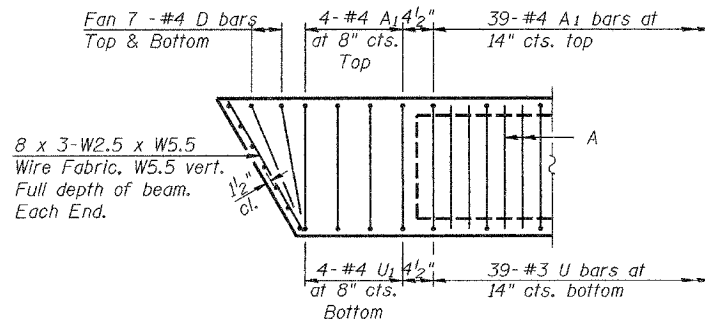
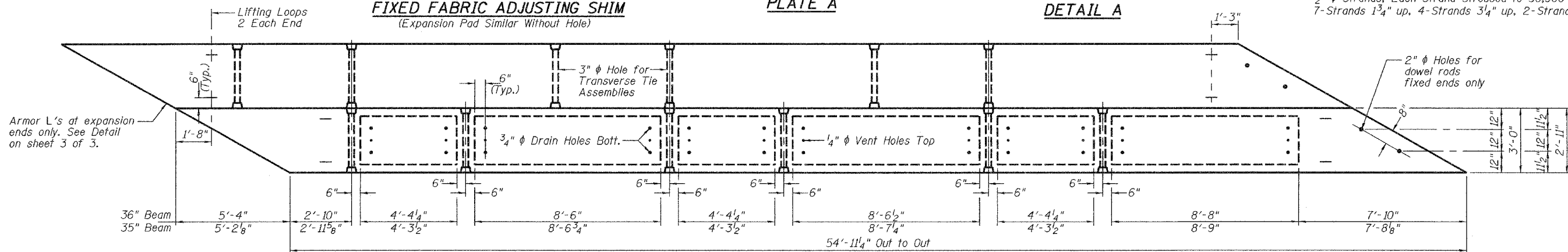
TYPICAL TRANSVERSE TIE ASSEMBLY



PLATE A



1/2" ϕ Strands, Each Strand Stressed to 30,900 Lbs.
7-Strands 1 3/4" up, 4-Strands 3/4" up, 2-Strands 4 1/2" up



- * TRANSVERSE PLACEMENT GUIDELINES**
- Place strands symmetrically about centerline of beam.
 - The minimum distance from center to center of strands in all directions shall be 2".
 - The minimum clearance from strand to dowel hole shall be 1/2".
 - The minimum clearance from strand to void shall be 1/2".
- Vertical placement of strands shall not be adjusted to satisfy the above guidelines.

NOTES

Prestressing steel shall be uncoated high strength, low relaxation 7-wire strand, Grade 270. The nominal diameter shall be 1/2" and the nominal cross-sectional area shall be 0.153 sq. in. Lifting loops shall be 2 - 1/2" ϕ -270 ksi strands, as shown. The 1" ϕ rods in the transverse tie assembly shall be tightened to a snug fit and the threads set. Pockets that receive transverse tie bar on outside shall be filled with grout after transverse tie assembly is in place. The bearing seat surfaces shall be adjusted by shimming to assure firm and even bearing. Two 1/8" fabric adjusting shims of the dimensions shown shall be provided for each bearing. Keyway surfaces shall be cleaned to remove form oil or other bond breaking material prior to shipment of the beams. Cleaning shall be done by sandblasting the keyway areas between top of the beam and the bottom edge of the key. Corrosion Inhibitor, as covered in the Special Provisions, shall be used in the concrete for precast prestressed concrete deck beams. Required Release Strength, f'cl, shall be 4,000 p.s.i.

BILL OF MATERIAL

Precast Prestressed Conc. Deck Bms.	Sq. Ft.	650
-------------------------------------	---------	-----

BEAM DETAILS
IL 40 / HENNEPIN CANAL
FEEDER CANAL BRIDGE 45
WHITESIDE COUNTY
SN 098-0015

DESIGNED	S.J.B.
CHECKED	P.S.J.
DRAWN	Drew Christopher
CHECKED	S.J.B. P.S.J.

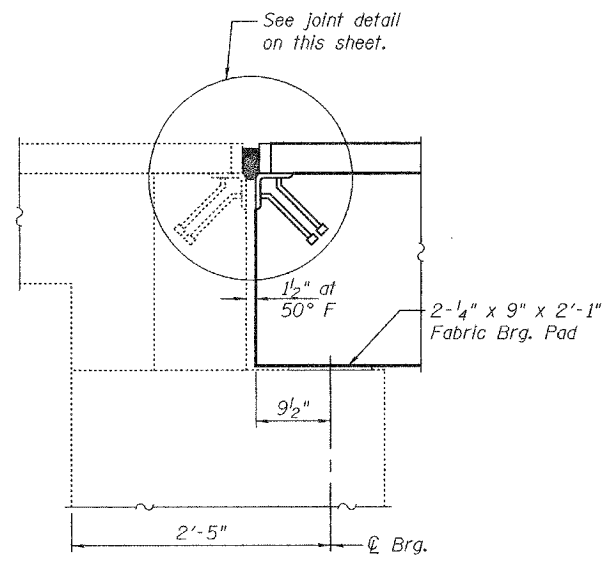
August 3, 2006
EXAMINED *John A. Morris*
PASSED *Ralph E. Anderson*

PD-5-R 10-22-04

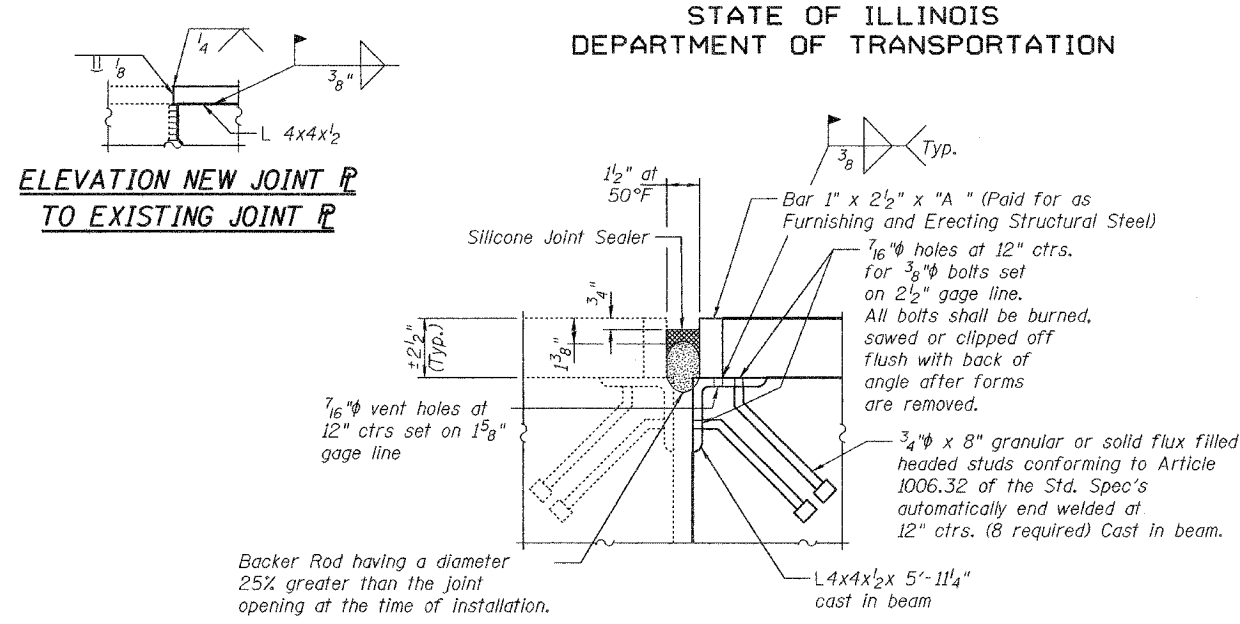
STATE OF ILLINOIS
DEPARTMENT OF TRANSPORTATION

ROUTE NO.	SECTION	COUNTY	TOTAL SHEETS	SHEET NO.
		Whiteside	9	3
FED. ROAD DIST. NO. 7	ILLINOIS	FED. AID PROJECT		

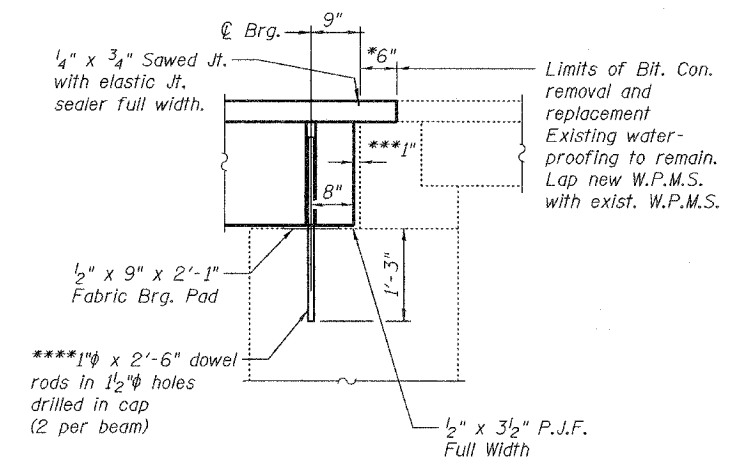
Contract Number: 64C67



TYPICAL NORTH ABUTMENT SECTION
(Dimensions at Rt. L's)



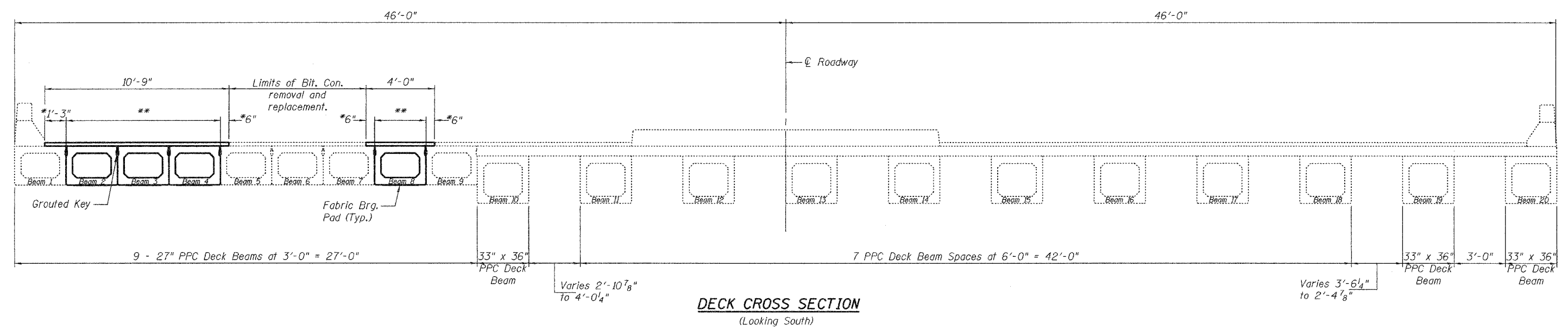
Beam	Length "A"
2 - 4	18'-4"
8	6'-1 1/4"



*Limits of existing waterproofing to remain. The bituminous concrete removal in these areas shall be paid for as Bituminous Concrete Surface Removal.
**Cost of removal in these areas is included with Removal of Existing PPC Deck Beams.

****Existing dowel rods are to be burned off, ground flush, and sealed with epoxy prior to placement of new beams. Cost included in Removal of Existing PPC Deck Beams. After beams have been erected holes shall be drilled into cap and dowel rods placed. Dowel holes shall be filled with non-shrink grout to top of beam and allowed to cure a minimum of 24 hours prior to grouting the shear keys.

***Existing joint filler to be removed. Cost included with removal of PPC deck beams. 1" Joint shall be filled with non-shrink grout. Dimension may vary to accommodate tolerance in beam lengths.



DESIGNED	S.J.B.	EXAMINED	August 3, 2006
CHECKED	P.S.J.	EXAMINED	John A. Morris ENGINEER OF STRUCTURAL SERVICES
DRAWN	Drew Christopher	PASSED	Ralph E. Anderson ENGINEER OF BRIDGES AND STRUCTURES
CHECKED	S.J.B. P.S.J.		

JOINT AND DECK DETAILS
IL 40 / HENNEPIN CANAL
FEEDER CANAL BRIDGE 45
WHITESIDE COUNTY
SN 098-0015

STATE OF ILLINOIS
DEPARTMENT OF TRANSPORTATION

ROUTE NO.	SECTION	COUNTY	TOTAL SHEETS	SHEET NO.
SBI 82		HENRY	10	2 SHEETS
FED. ROAD DIST. NO. 7		ILLINOIS	FED. AID PROJECT	

Contract No. 64C67

GENERAL NOTES

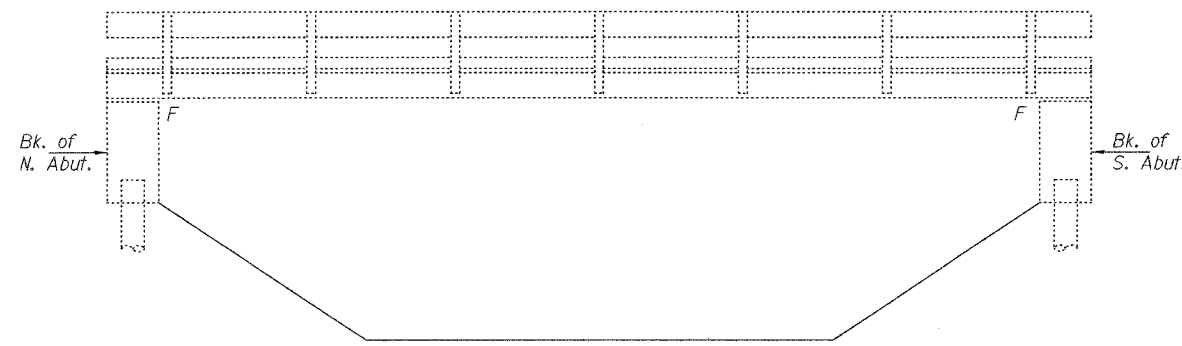
Plan dimensions and details relative to existing structure have been taken from existing plans and are subject to nominal construction variations. It shall be the Contractor's responsibility to verify such dimensions and details in the field and make necessary approved adjustments prior to construction or ordering of materials. Such variations shall not be cause for additional compensation for a change in the scope of the work, however, the Contractor will be paid for the quantity actually furnished at the unit price bid for the work.

Any damage done to the bridge during beam removal shall be repaired by the Contractor. Cost to be included in the cost of "Removal of Existing PPC Deck Beams".

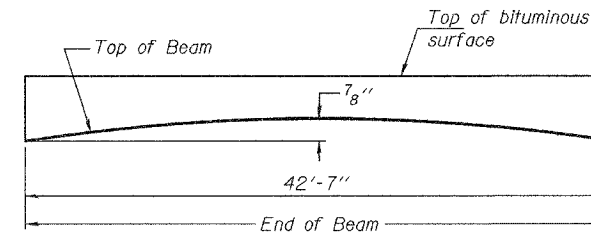
The top surface of the beams shall be finished in accordance with Article 504.06 of the Standard Specifications except that the surface shall not be roughened by brooming. The finished surface shall be free of depressions or high spots with sharp corners, and the top edge of keys shall be rounded or chamfered a minimum of 1/4".

The cut strands at each beam end shall be given two coats of zinc dust spray or paint meeting the requirements of ASTM A780. The zinc dust spray or paint shall be applied before corrosion appears and allowed to dry according to manufacturer's specifications prior to another coat of zinc. This work shall be performed by the producer and included with the cost of the beam.

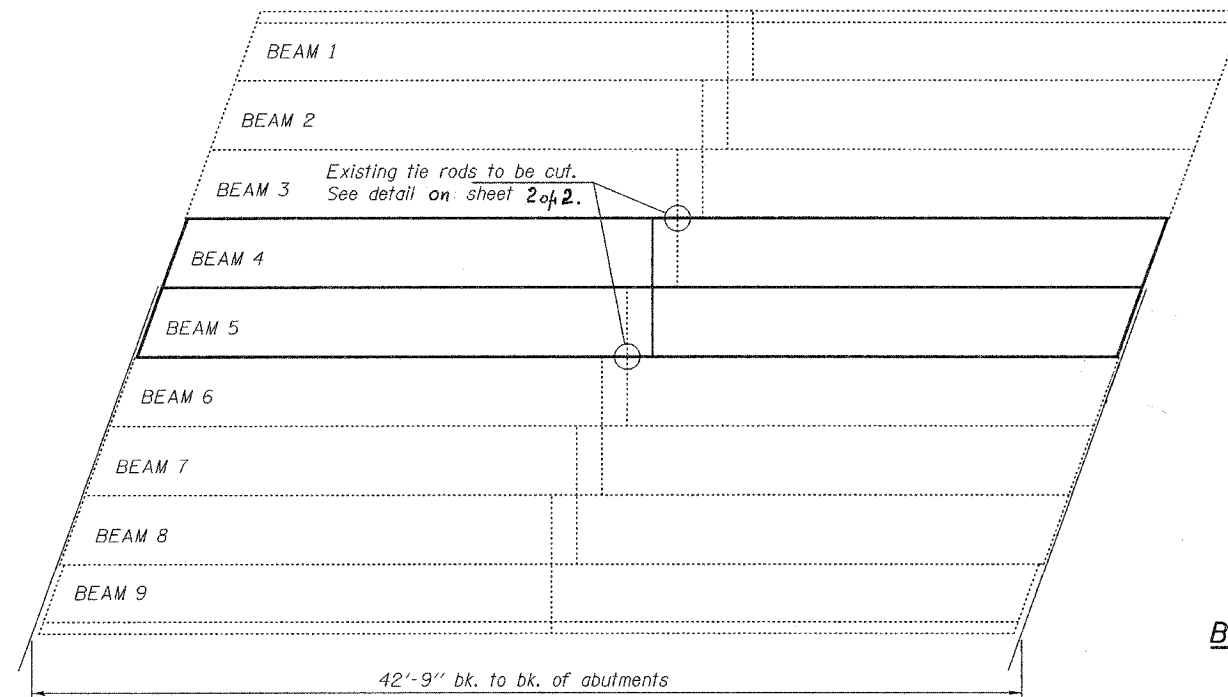
Precast prestressed concrete deck beams shall be erected according to the requirements of Article 504.06(e) of the Standard Specifications except that shear key clamping between new and existing construction will be required as shown on the plans and as herein specified. After the new deck beams are erected, the clamping devices shall be installed and pulled up tight so that a full, firm bearing is obtained between the clamping plates and the deck beam concrete. The Contractor shall furnish all material for the clamping devices, including sufficient 1/6" and 1/8" steel shims to adjust for differential elevations between the two deck beams. The 1/4" holes for the clamping devices shall be drilled at the locations shown on the plans. Care shall be taken to drill the holes perpendicular to the beams. After the shear key clamping devices are fully secured, the keyways shall be grouted. The clamping devices shall not be loosened or removed. Complete the wearing surface installation. This work, including the furnishing of clamping devices and shims, shall be included in the cost for Precast Prestressed Concrete Deck Beams (21" Depth).



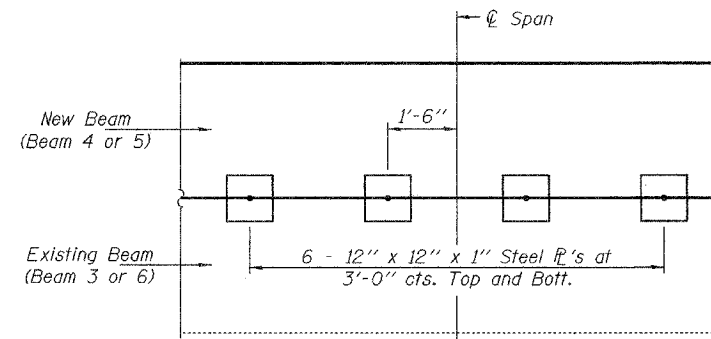
ELEVATION



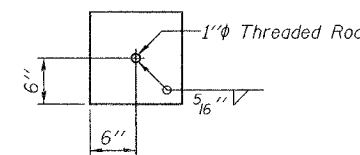
ANTICIPATED INITIAL CAMBER DIAGRAM



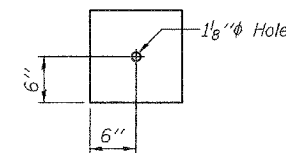
FRAMING PLAN



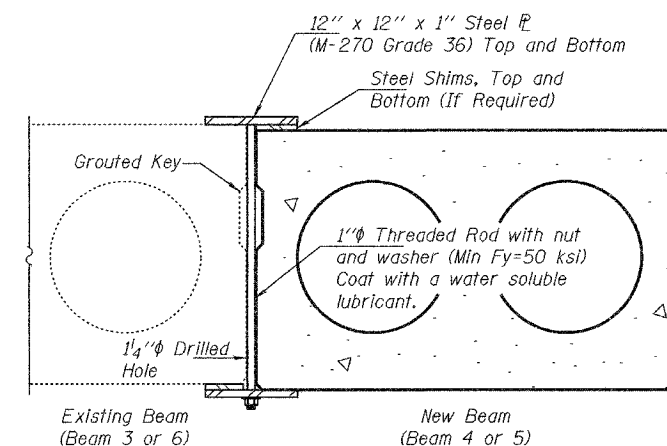
PLAN



TOP CLAMPING PLATE

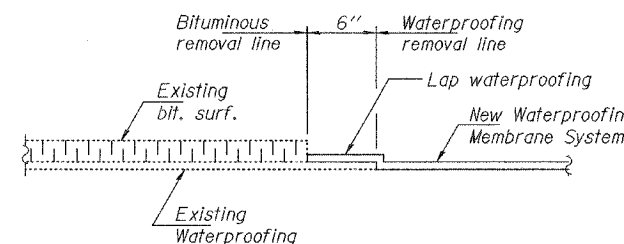


BOTTOM CLAMPING PLATE



SHEAR KEY CLAMPING DEVICE

Cost included with Precast Prestressed Concrete Deck Beams (21" Depth) (12 Required)



WATERPROOFING TREATMENT

**DESIGN STRESSES
PRESTRESS UNITS**

f'c = 5,000 psi
f'ci = 4,000 psi
f's = 270,000 psi (1/2" low lax strands)
f'si = 201,960 psi (1/2" low lax strands)

TOTAL BILL OF MATERIAL

ITEM	UNIT	QUANTITY
Bituminous Concrete Surface Course, Superpave Mix "D" N50	Tons	8.5
Bituminous Concrete Surface Removal	Sq. Yd.	5
Removal of Existing PPC Deck Beams	Sq. Ft.	256
Precast Prestressed Concrete Deck Beams (21" Depth)	Sq. Ft.	252
Waterproofing Membrane System	Sq. Yd.	34
PC Mortar Fairing Course	Foot	129

PLAN AND ELEVATION

SBI RT. 82
HENRY COUNTY
STA. 636+24
SN 037-0106

DESIGNED	<i>R. A. Bell</i>
CHECKED	<i>Paul S. Johnson</i>
DRAWN	<i>baliva</i>
CHECKED	<i>PSJ</i>

EXAMINED	<i>John A. Morris</i>	JULY 17, 2006
PASSED	<i>Ralph E. Anderson</i>	



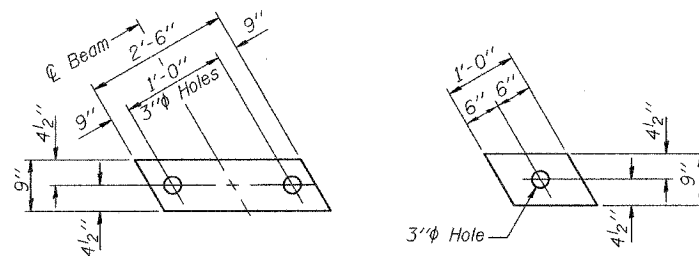
EXPIRES 11-30-2006

STATE OF ILLINOIS
DEPARTMENT OF TRANSPORTATION

ROUTE NO.	SECTION	COUNTY	TOTAL SHEETS	SHEET NO.
SBI 82		HENRY	11	2
FED. ROAD DIST. NO. 7	ILLINOIS	FED. AID PROJECT		

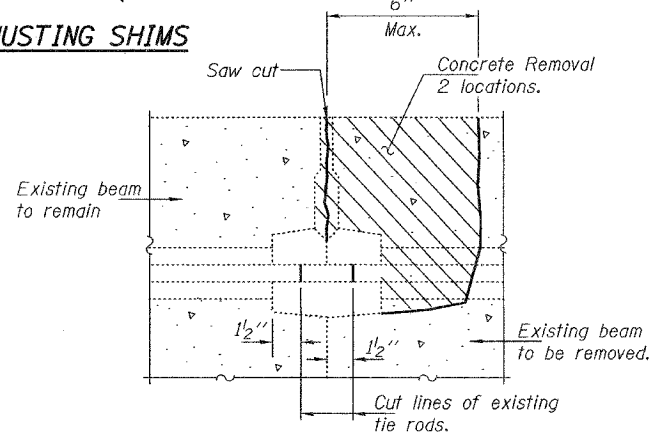
SHEET NO. 2
2 SHEETS

Contract No. 64C67

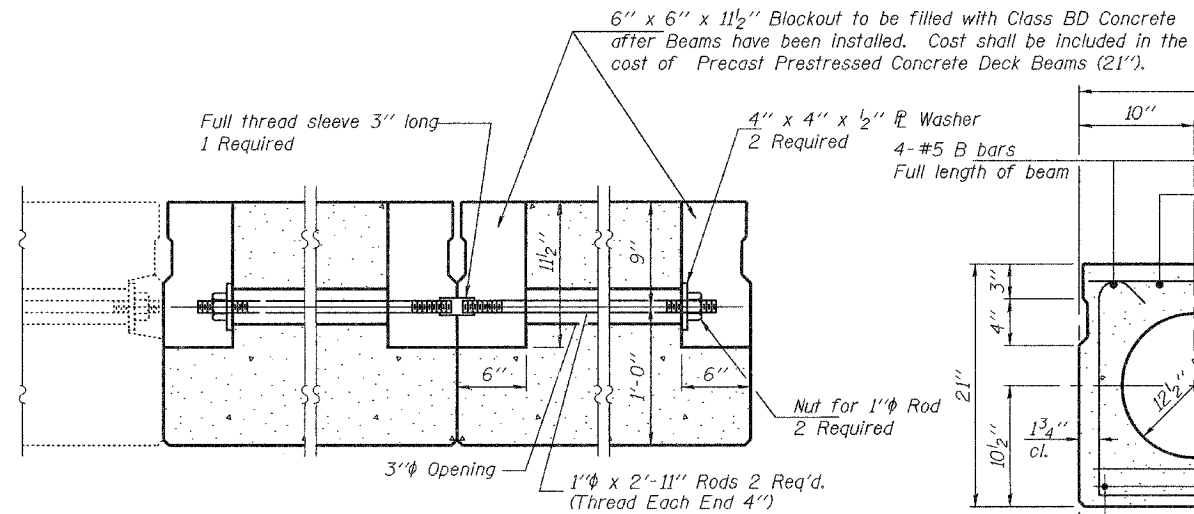


FABRIC BEARING PAD

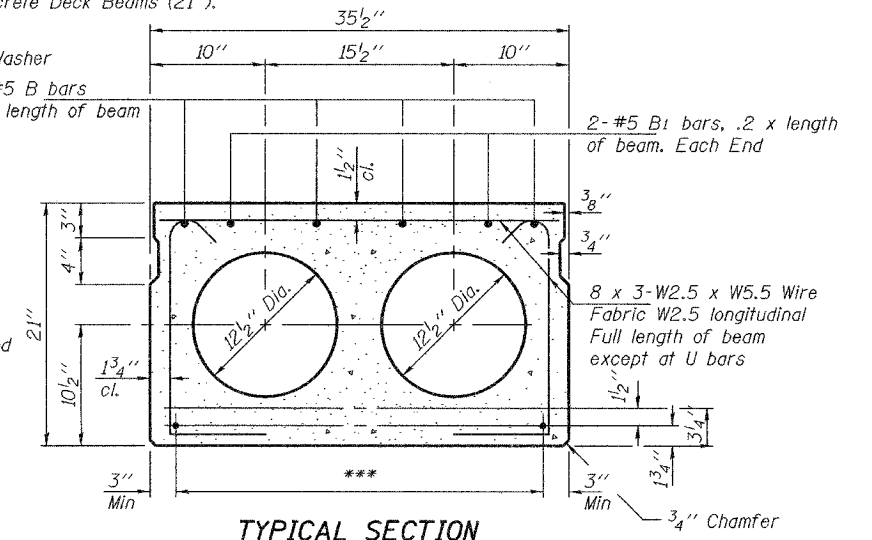
ADJUSTING SHIMS



BEAM REMOVAL DETAIL
AT TRANSVERSE TIES



TYPICAL TRANSVERSE TIE ASSEMBLY



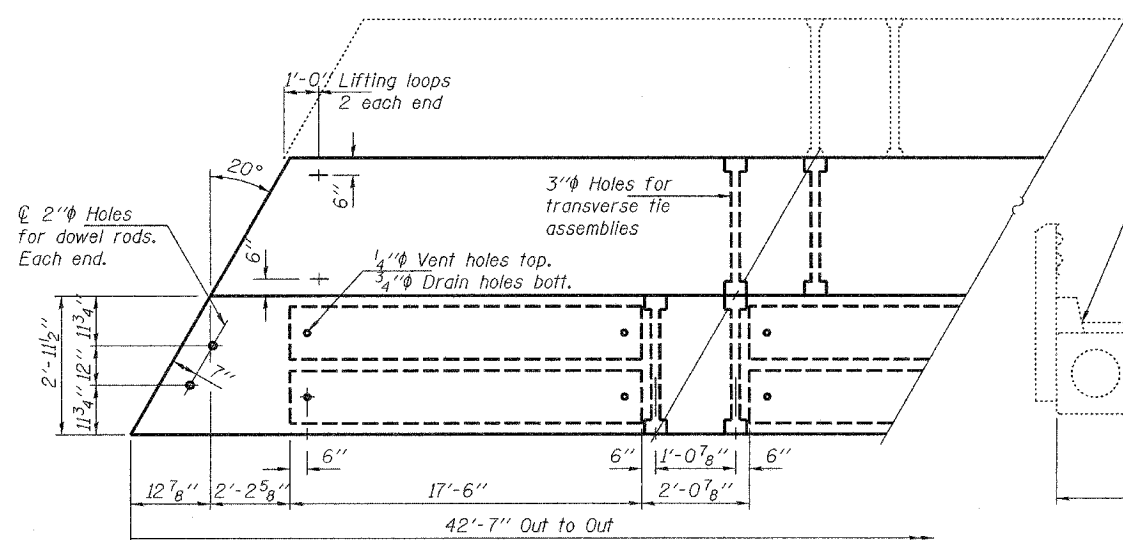
TYPICAL SECTION

1/2" Strands, Each Strand Stressed to 30,900 Lbs.
5-Strands 1 3/4" up, 6-Strands 3/4" up

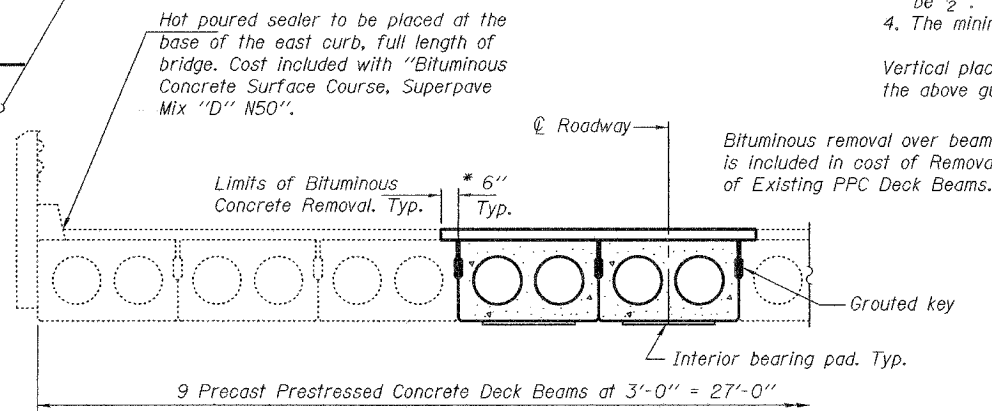
*** TRANSVERSE PLACEMENT GUIDELINES

1. Place strands symmetrically about centerline of beam.
2. The minimum distance from center to center of strands in all directions shall be 2".
3. The minimum clearance from strand to dowel hole shall be 1/2".
4. The minimum clearance from strand to void shall be 1 1/2".

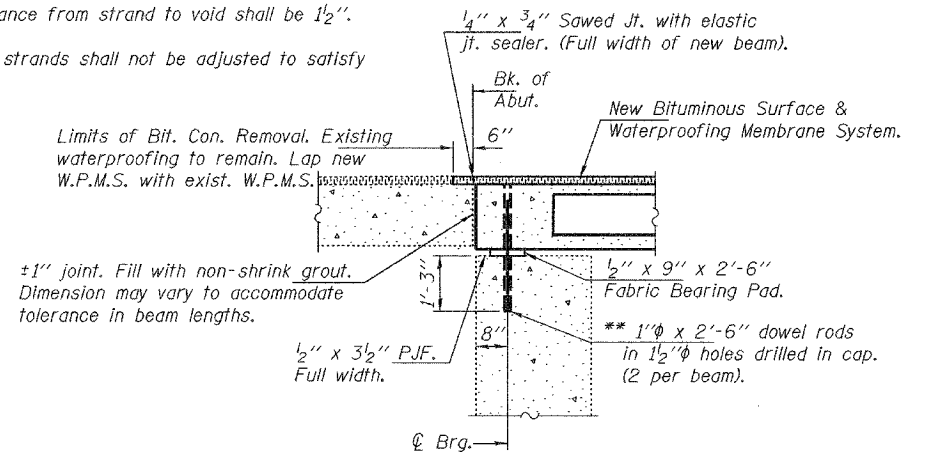
Vertical placement of strands shall not be adjusted to satisfy the above guidelines.



PARTIAL PLAN



PARTIAL CROSS SECTION
(Looking South)



SECTION THRU ABUTMENTS

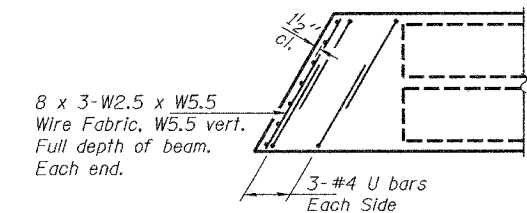
* Existing waterproofing to remain. Lap new waterproofing membrane system with existing waterproofing.

BILL OF MATERIAL

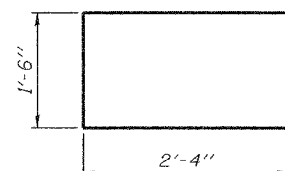
Precast Prestressed Conc. Deck Bms. (21" Depth)	Sq. Ft.	252

NOTES

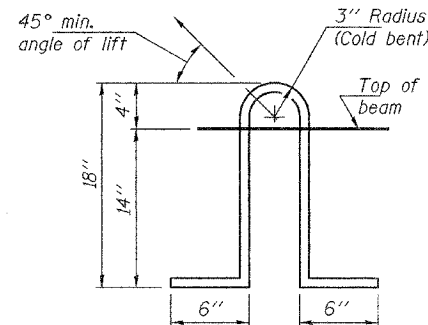
Prestressing steel shall be uncoated high strength, low relaxation 7-wire strand, Grade 270. The nominal diameter shall be 1/2" and the nominal cross-sectional area shall be 0.153 sq. in. Lifting loops shall be 2-1/2" diameter 270 ksi strands, as shown. The 1" rods in the transverse tie assembly shall be tightened to a snug fit and the threads set. Pockets that receive transverse tie bar on outside shall be filled with grout after transverse tie assembly is in place. The bearing seat surfaces shall be adjusted by shimming to assure firm and even bearing. Two 1/8" fabric adjusting shims of the dimensions shown shall be provided for each bearing. Keyway surfaces shall be cleaned to remove form oil or other bond breaking material prior to shipment of the beams. Cleaning shall be done by sandblasting the keyway areas between top of the beam and the bottom edge of the key. Corrosion Inhibitor, as covered in the Special Provisions, shall be used in the concrete for precast prestressed concrete deck beams. Required Release Strength, f'ci, shall be 4000 p.s.i.



END PLAN



BAR U



LIFTING LOOP DETAIL

DESIGNED	DAB
CHECKED	PSJ
DRAWN	balva
CHECKED	DAB PSJ

JULY 17, 2006
EXAMINED *John A. Morris*
ENGINEER OF STRUCTURAL SERVICES
PASSED *Ralph E. Anderson*
ENGINEER OF BRIDGES AND STRUCTURES

BEAM DETAILS
SBI RT. 82
HENRY COUNTY
STA. 636+24
SN 037-0106

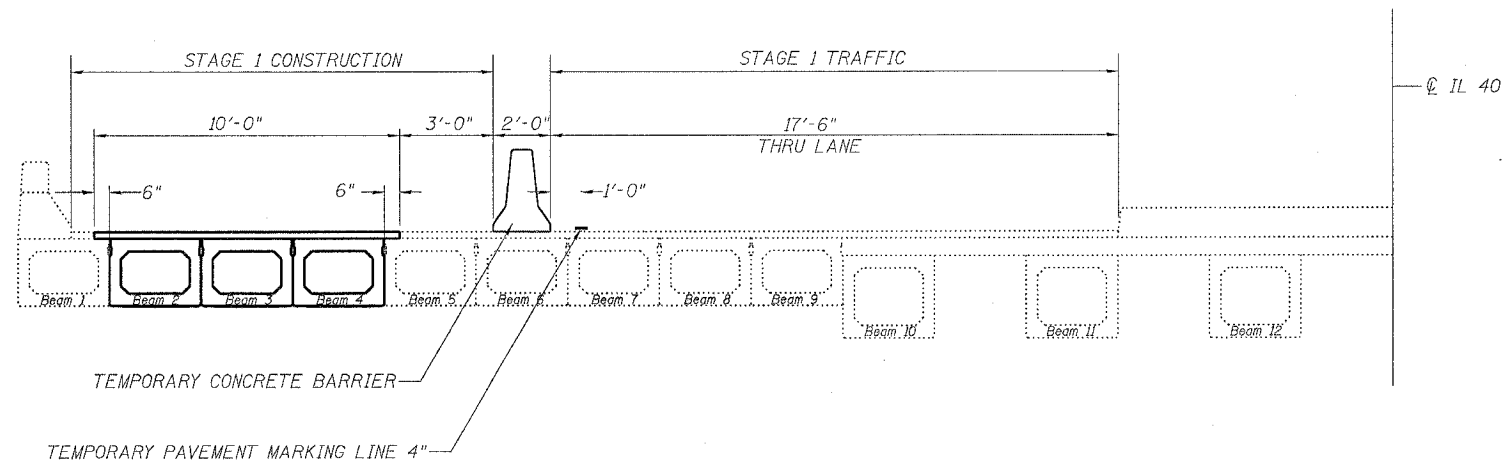
STAGING TYPICALS

(SN 098-0015)

F.A.P. RTE.	SECTION	COUNTY	TOTAL SHEETS	SHEET NO.
*	**	***	17	12
STA.		TO STA.		
FED. ROAD DIST. NO.	ILLINOIS	FED. AID PROJECT		
=FAP 646 & FAP 638 *=101BY-D & 137-IB-D ****=WHITESIDE & HENRY				

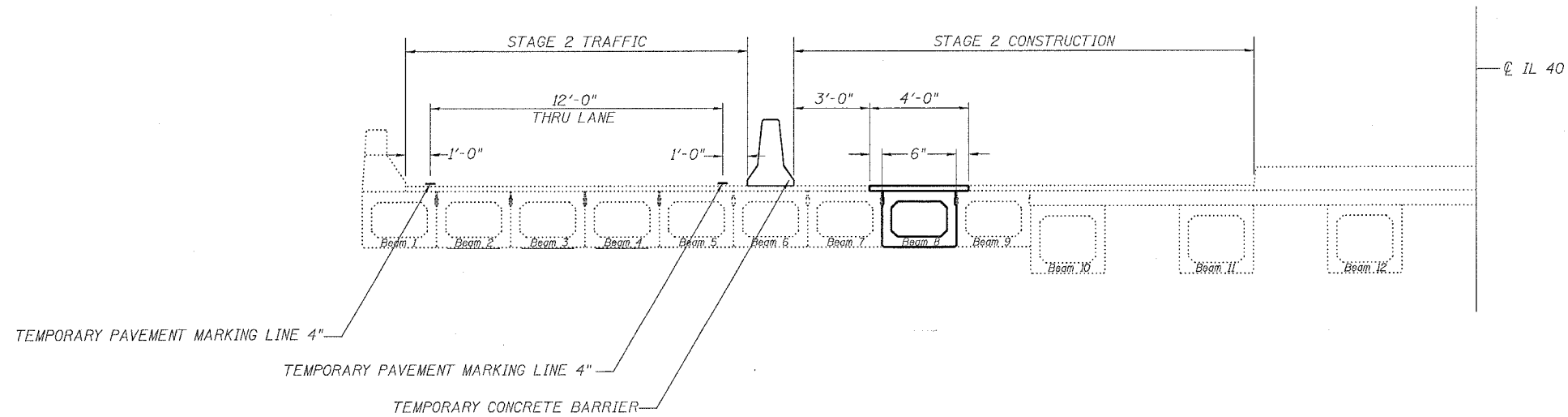
STAGE 1

NORTHBOUND LANES



STAGE 2

NORTHBOUND LANES



REVISIONS		ILLINOIS DEPARTMENT OF TRANSPORTATION
NAME	DATE	
		SCALE: VERT. HORIZ. DATE

DRAWN BY
CHECKED BY

STAGING TYPICALS

PLOT DATE = Mon Jul 10 10:50:00 2005
 FILE NAME = c:\projects\211686\111686.dgn
 PLOT SCALE = 30.0000 / IN.
 USER NAME = gprj

F.A.P. RTE.	SECTION	COUNTY	TOTAL SHEETS	SHEET NO.
*	**	***	17	13

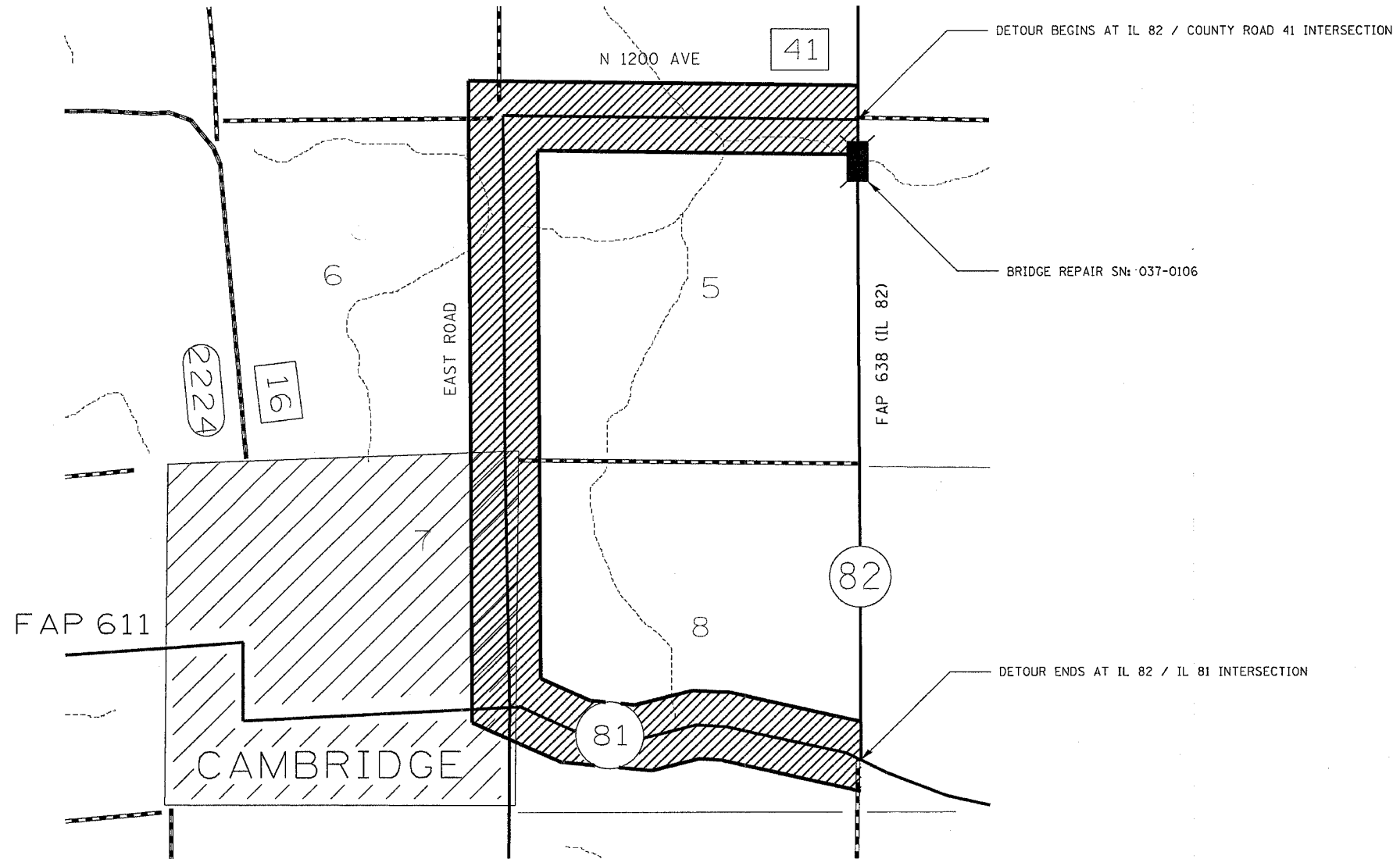
STA. TO STA.

FED. ROAD DIST. NO. ILLINOIS FED. AID PROJECT

- *=FAP 646 & FAP 638
- **=101BY-D & 137-1B-D
- ***=WHITESIDE & HENRY

DETOUR ROUTE DETAIL

TOTAL ADVERSE DISTANCE 3 MILES



REVISIONS	
NAME	DATE

ILLINOIS DEPARTMENT OF TRANSPORTATION

SCALE: VERT. / HORIZ.

DATE

DRAWN BY

CHECKED BY

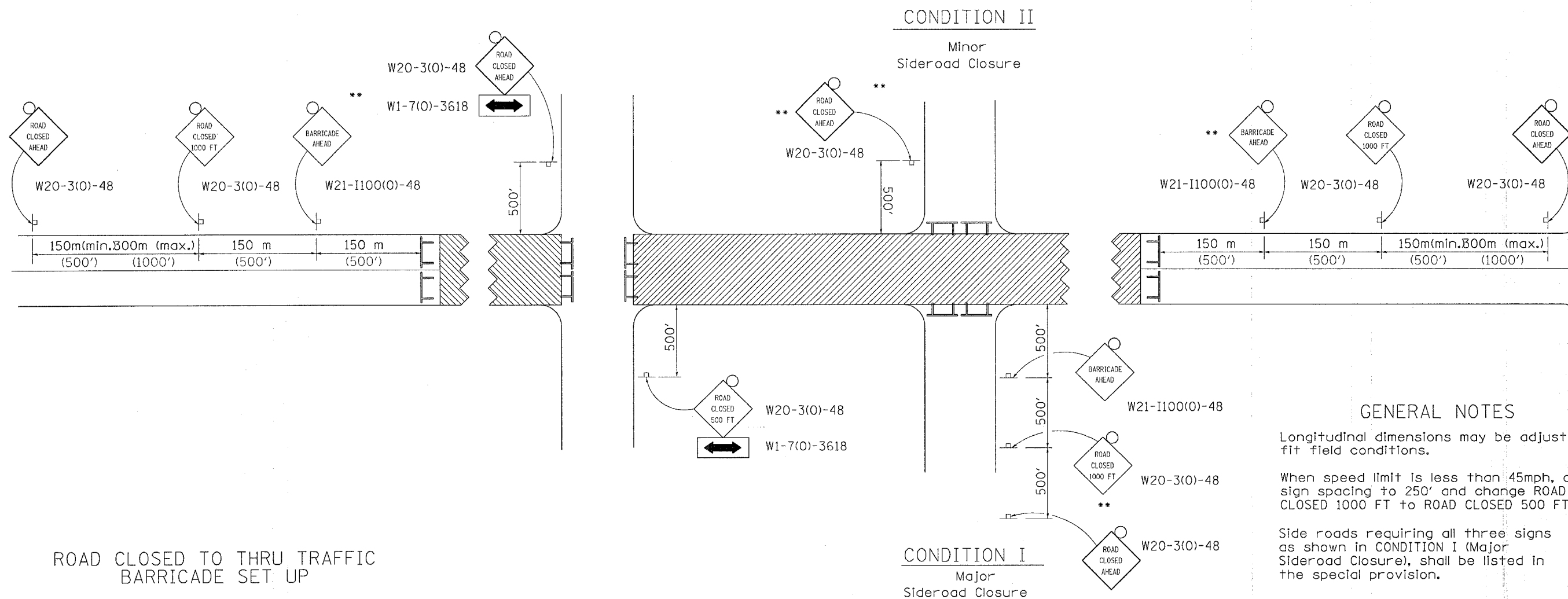
PLOT DATE = Mon Jul 10 18:49:29 2005
 FILE NAME = c:\p\projects\211685\detour.dgn
 PLOT SCALE = 50.0000 / IN.
 USER NAME = gofj

F.A.P. RTE.	SECTION	COUNTY	TOTAL SHEETS	SHEET NO.
*	**	***	17	14

STA.	TO STA.
FED. ROAD DIST. NO.	ILLINOIS FED. AID PROJECT

*=FAP 646 & FAP 638
 **=101BY-D & 137-1B-D
 ***=WHITESIDE & HENRY

TRAFFIC CONTROL FOR ROAD CLOSURE



GENERAL NOTES

- Longitudinal dimensions may be adjusted to fit field conditions.
- When speed limit is less than 45mph, change sign spacing to 250' and change ROAD CLOSED 1000 FT to ROAD CLOSED 500 FT.
- Side roads requiring all three signs as shown in CONDITION I (Major Sideroad Closure), shall be listed in the special provision.
- ** Where local access is to be maintained, barricades are to be set up as shown in Road Closed to thru traffic.
- Type III Barricades and R11-4-4830 signs shall be as shown in "Road Closed To All Traffic" detail on Highway Standard 702001.

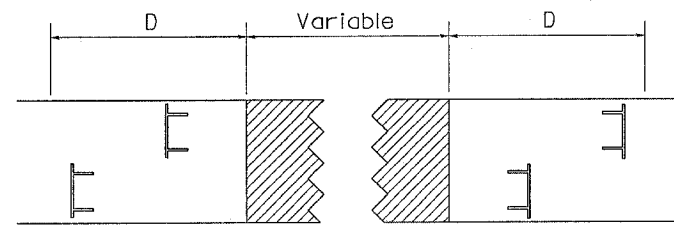
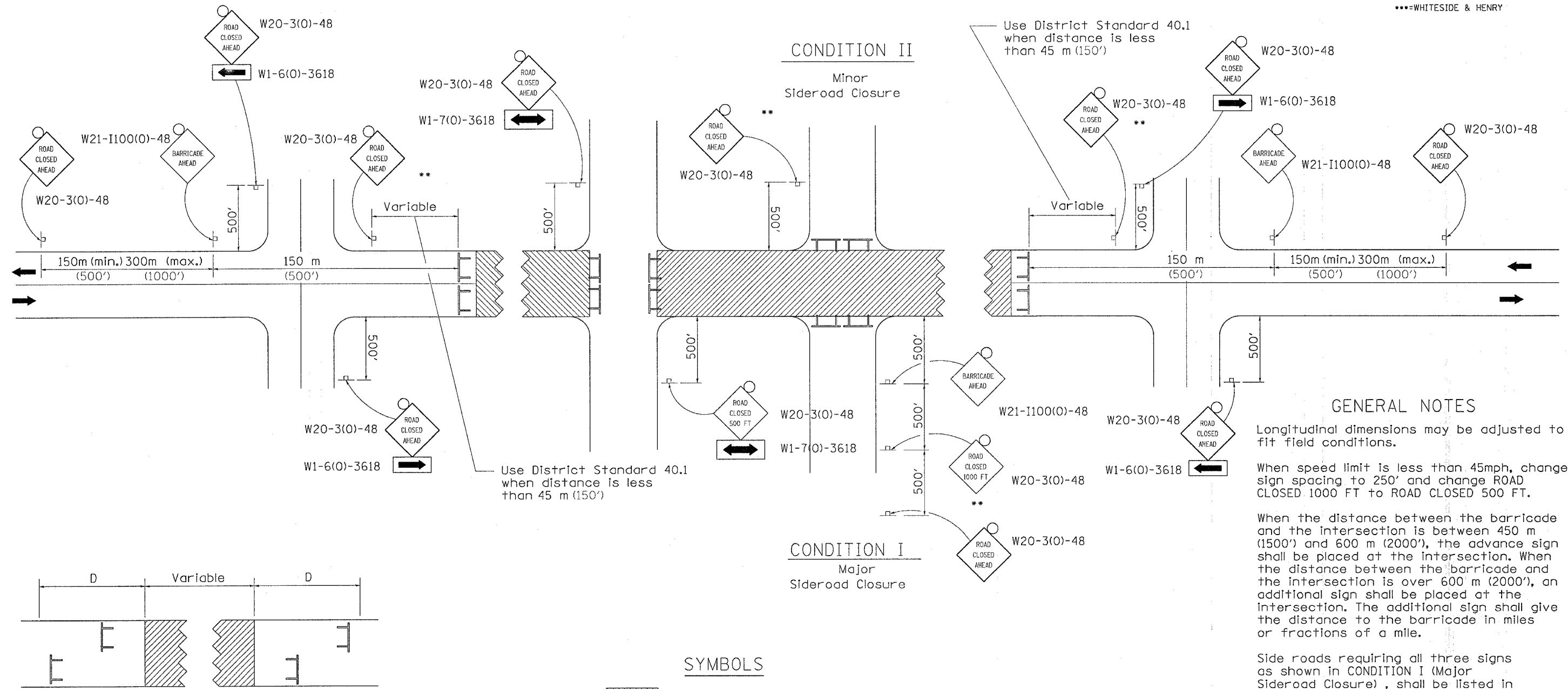
All dimensions are in millimeters (inches) unless otherwise shown.

TYPICAL APPLICATION FOR ROAD CLOSURE

PLOT DATE = Nov. 14, 10 10:54:59 2005
 FILE NAME = s:\work\101131\101131.dgn
 PLOT SCALE = 50.0000 / IN.
 REFERENCE = REF#

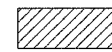


TRAFFIC CONTROL FOR ROAD CLOSURE WITH SIDE ROAD WITHIN 150'

F.A.P. RTE.	SECTION	COUNTY	TOTAL SHEETS	SHEET NO.
*	**	***	17	15
STA.		TO STA.		
FED. ROAD DIST. NO.		ILLINOIS FED. AID PROJECT		
=FAP 646 & FAP 638				
**=101BY-D & 137-1B-D				
***=WHITESIDE & HENRY				



Type III Barricades and R11-4-4830 signs shall be as shown in "Road Closed To All Thru Traffic" detail on Highway Standard 702001. If the distance "D" exceeds 600 m (2000') an additional set of barricades and R11-4-4830 shall be placed at each end of the work area.

SYMBOLS

-  Work area
-  Type III Barricade with Flashers
-  Sign with flashing light

All dimensions are in millimeters (inches) unless otherwise shown.

GENERAL NOTES

Longitudinal dimensions may be adjusted to fit field conditions.

When speed limit is less than 45mph, change sign spacing to 250' and change ROAD CLOSED 1000 FT to ROAD CLOSED 500 FT.

When the distance between the barricade and the intersection is between 450 m (1500') and 600 m (2000'), the advance sign shall be placed at the intersection. When the distance between the barricade and the intersection is over 600 m (2000'), an additional sign shall be placed at the intersection. The additional sign shall give the distance to the barricade in miles or fractions of a mile.

Side roads requiring all three signs as shown in CONDITION I (Major Sideroad Closure), shall be listed in the special provision.

** Where local access is to be maintained, barricades are to be set up as shown above in Road Closed to thru traffic.

Type III Barricades and R11-2-4830 signs shall be as shown in "Road Closed To All Traffic" detail on Highway Standard 702001.

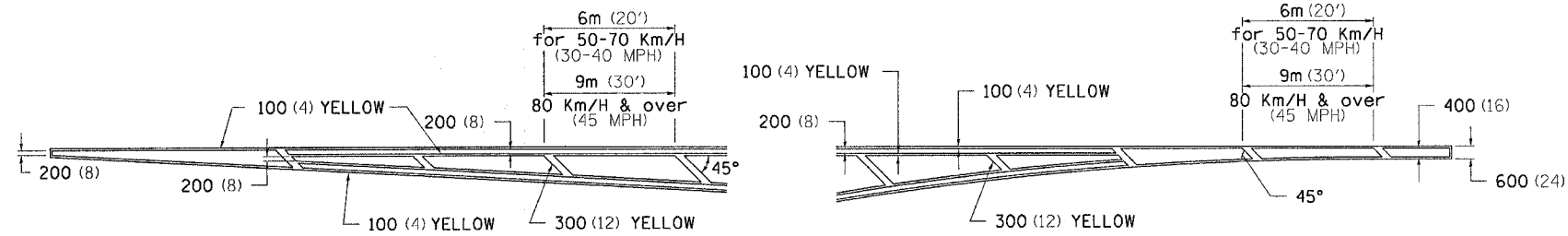
TYPICAL APPLICATION FOR ROAD CLOSURE WITH SIDE ROAD WITHIN 150' OF CLOSURE

PLOT DATE = Mon Jul 18 10:54:49 2006
 FILE NAME = c:\p\c\m\m\2011\606\111506.dgn
 PLOT SCALE = 50.0000 / IN.
 REFERENCE = #REF#

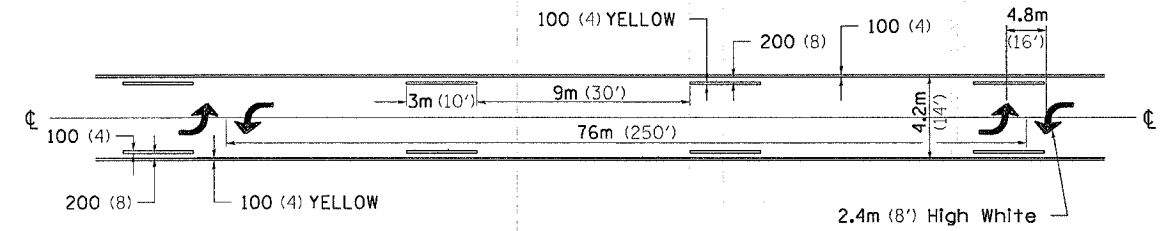
F.A.P. RTE.	SECTION	COUNTY	TOTAL SHEETS	SHEET NO.
•	••	•••	17	16
STA.		TO STA.		
FED. ROAD DIST. NO.		ILLINOIS FED. AID PROJECT		
•=FAP 646 & FAP 638				
••=101BY-D & 137-1B-D				
•••=WHITESIDE & HENRY				

TYPICAL PAVEMENT MARKINGS

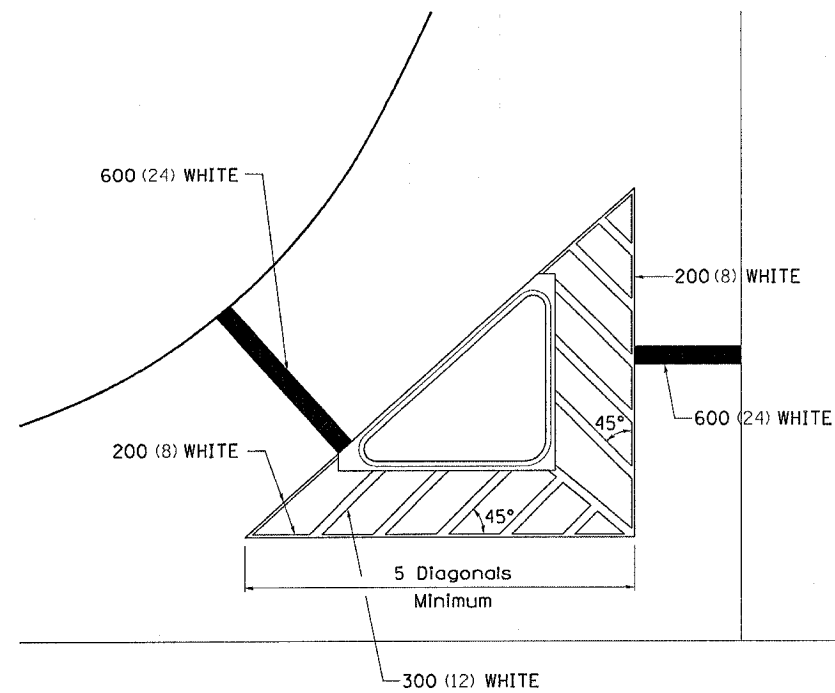
TYPICAL PAVEMENT MARKING FOR FLUSH MEDIAN



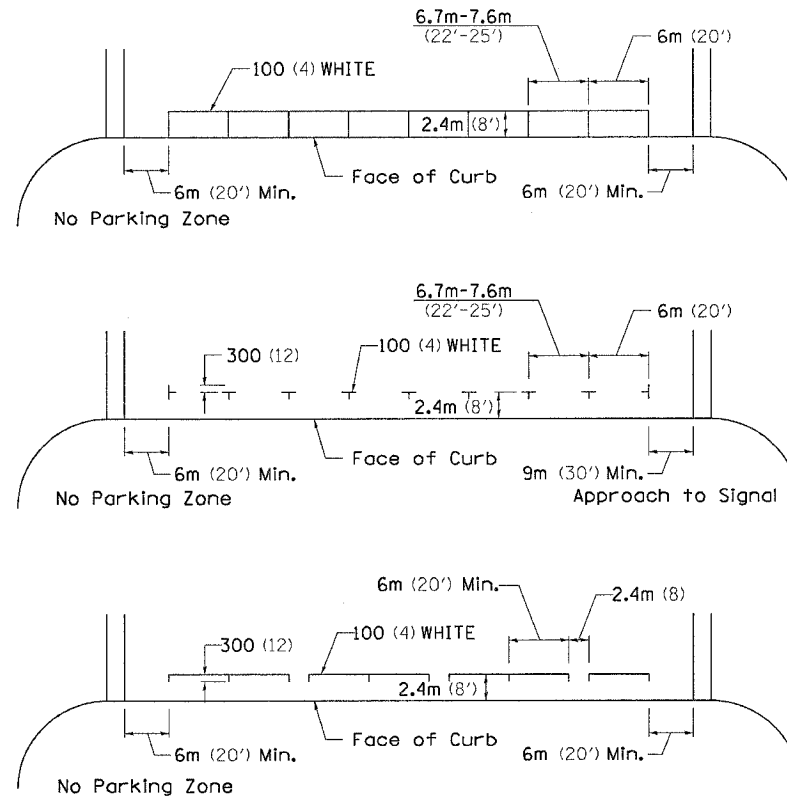
MEDIAN PAVEMENT MARKING



TYPICAL ISLAND OFFSET SHOULDER WIDTH



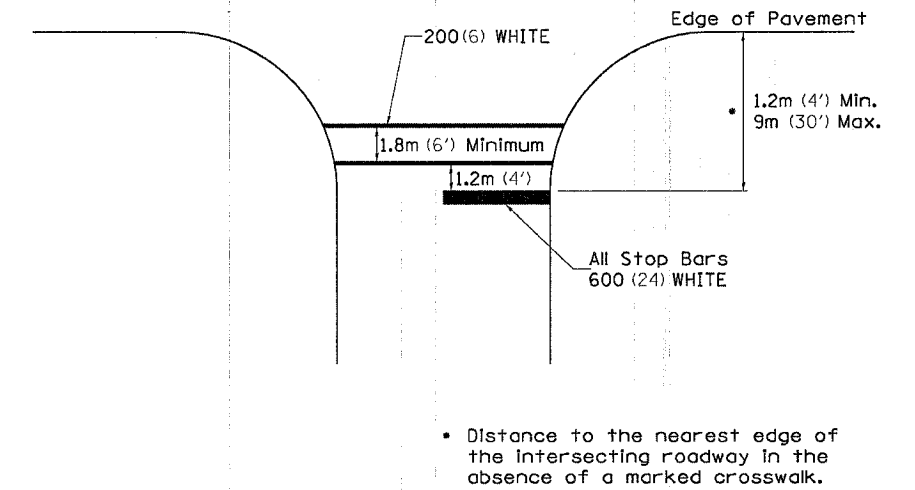
TYPICAL PARKING SPACING



•• ALL DIMENSIONS ARE IN MILLIMETERS (INCHES) UNLESS OTHERWISE NOTED.

STANDARD CROSSWALK MARKING

See Schedules for Locations

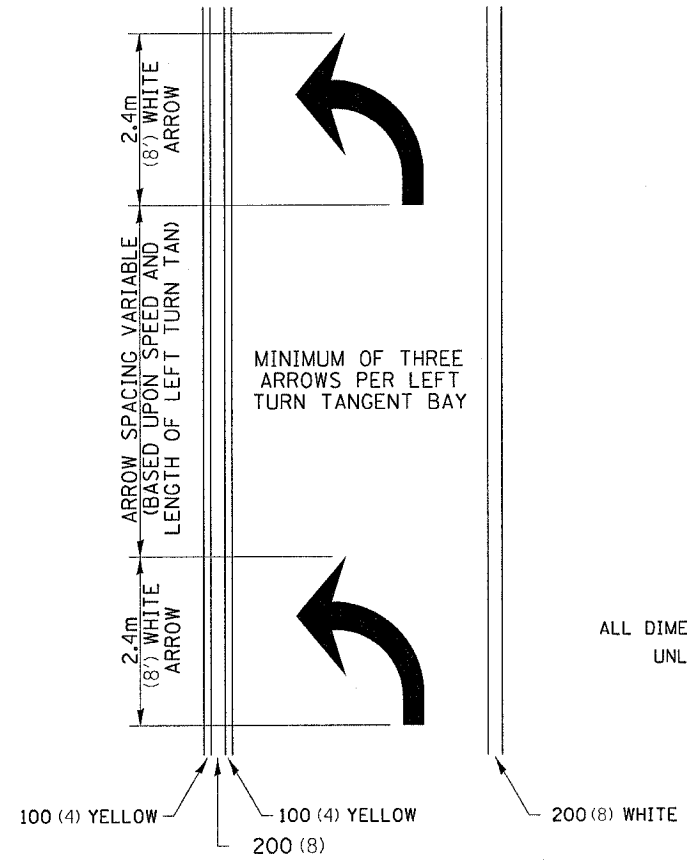


PLOT DATE = Mon Jul 10 10:54:59 2006
 FILE NAME = c:\p\projects\11586\dl1606\svr.dgn
 PLOT SCALE = 50.0000 / 1 IN.
 REFERENCE = #REF#

F.A.P. RTE.	SECTION	COUNTY	TOTAL SHEETS	SHEET NO.
..	17	17
STA.		TO STA.		
FED. ROAD DIST. NO.		ILLINOIS FED. AID PROJECT		
=FAP 646 & FAP 638 =101BY-D & 137-1B-D =WHITESIDE & HENRY				

TYPICAL PAVEMENT MARKINGS

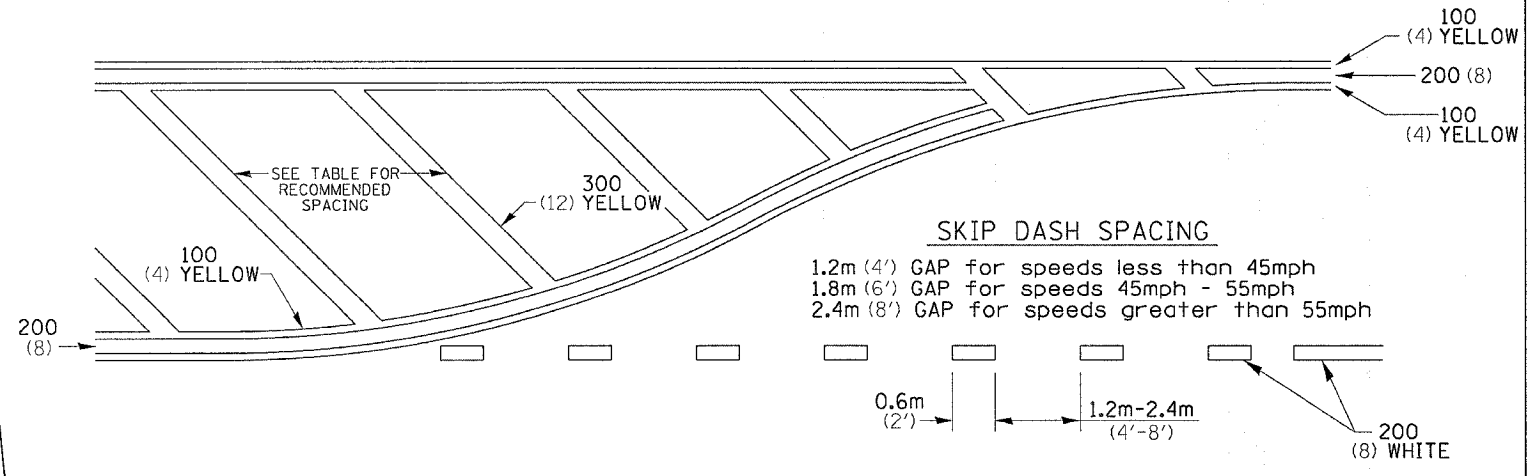
ARROW LAYOUT



- ◀ ONE-WAY AMBER MARKER
- ◁ ONE-WAY CRYSTAL MARKER
- ◆ TWO-WAY AMBER MARKER

ALL DIMENSIONS ARE IN MILLIMETERS (INCHES) UNLESS OTHERWISE NOTED.

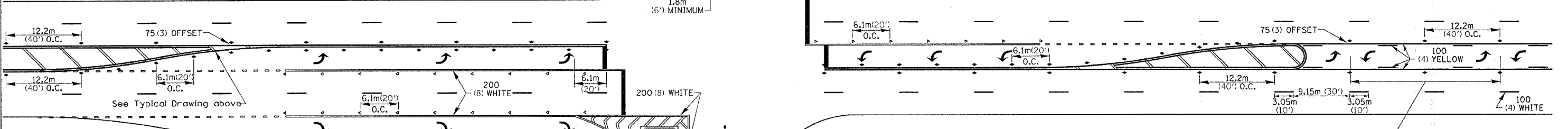
TYPICAL PAVEMENT MARKING FOR FLUSH MEDIAN



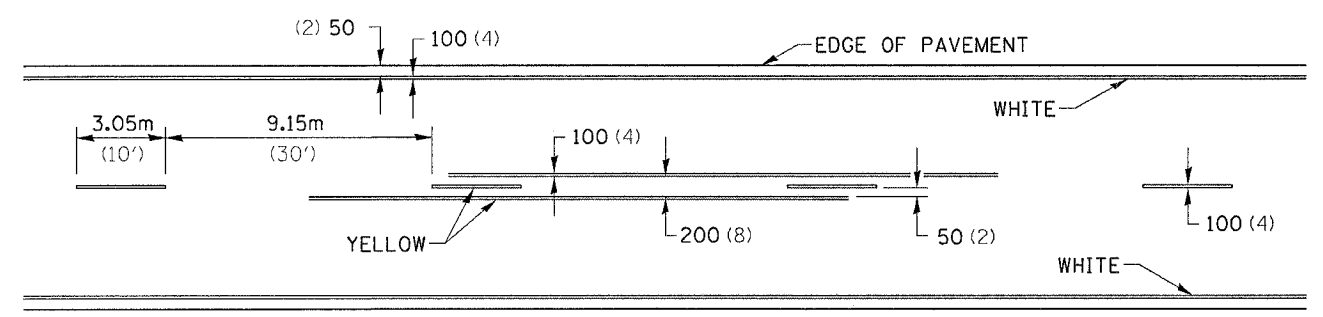
RECOMMENDED SPACING BETWEEN DIAGONALS (IN FEET)

Speed Limit Range	Continuous Median Area	Intersection Channelization	Objects (Islands)
less than 50Km/H (30MPH)	15.3m (50')	4.53m (15')	3.05m (10')
50-60Km/H (30-40MPH)	22.9m (75')	6.1m (20')	4.53m (15')
70Km/H (45MPH) & over	22.9m (75')	9.05m (30')	6.1m (20')

NOTE: if the spacing recommended in the Table does not permit at least five diagonal lines in the area being marked, the spacing from the next lowest speed range should be used. The recommended spacing is measured parallel to the pavement center line.



TYPICAL PAVEMENT MARKING FOR TWO LANE SECTION - NO PASSING ZONES



SYMBOLS

See Typical Drawing above
12.2m (40') O.C. APPROACH SIDE ONLY

- REDUCE TO 12.2m (40') O.C. ON CURVES WHERE ADVISORY SPEEDS ARE 15Km/H (10MPH) LOWER THAN POSTED SPEEDS.
- USE DOUBLE MARKERS WHEN ADT ≥ 25,000

MULTI-LANE / UNDIVIDED

PLOT DATE = Mon Jul 10 10:55:00 2005
 FILE NAME = c:\p\projects\11666\11666.dgn
 PLOT SCALE = 50.0000 / IN.
 REFERENCE = REF#