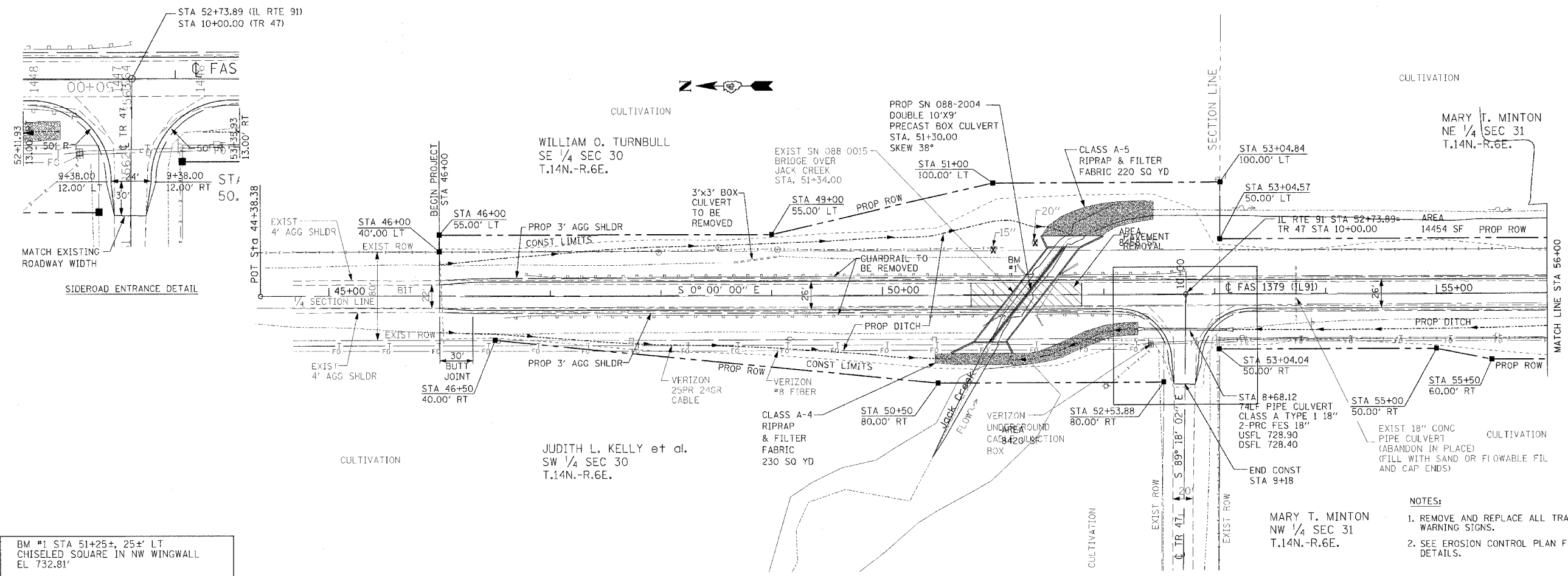


CONTRACT NO. 68430				
F.A.S. RTE.	SECTION	COUNTY	TOTAL SHEETS	SHEET NO.
1379	(108-B-1) BR	STARK	43	9
STA. 46+00.00 TO STA. 56+00.00				
FED. ROAD DIST. NO.		ILLINOIS	IL 91	



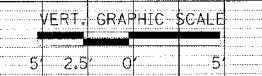
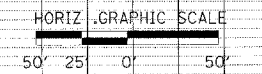
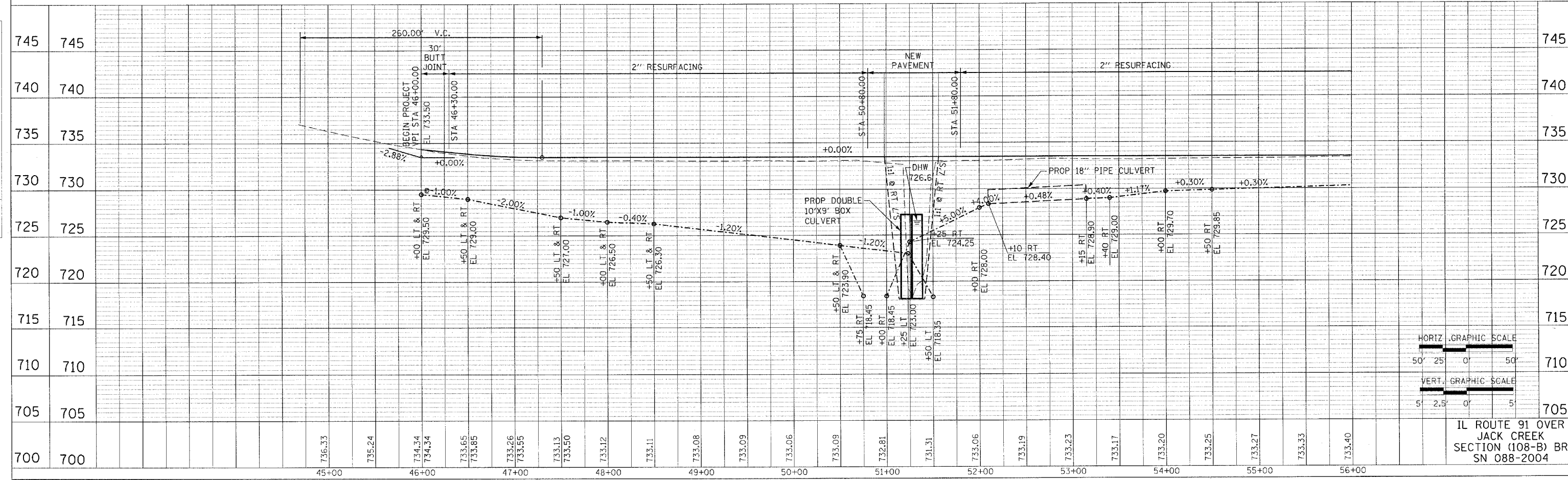
BM #1 STA 51+25+, 25' LT
CHISELED SQUARE IN NW WINGWALL
EL 732.81'

- NOTES:
1. REMOVE AND REPLACE ALL TRAFFIC WARNING SIGNS.
 2. SEE EROSION CONTROL PLAN FOR ADDITIONAL DETAILS.



PLAN	DATE
SURVEYED	BY
ALIGNED	CHECKED
NOTE BOOK NO.	NO.
DATE	

PROFILE	DATE
SURVEYED	BY
GRADES CHECKED	CHECKED
PLAN NOTED	NOTED
BY	DATE



IL ROUTE 91 OVER
JACK CREEK
SECTION (108-B) BR
SN 088-2004