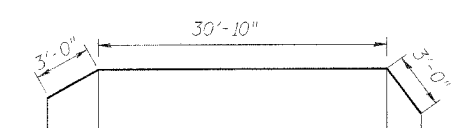
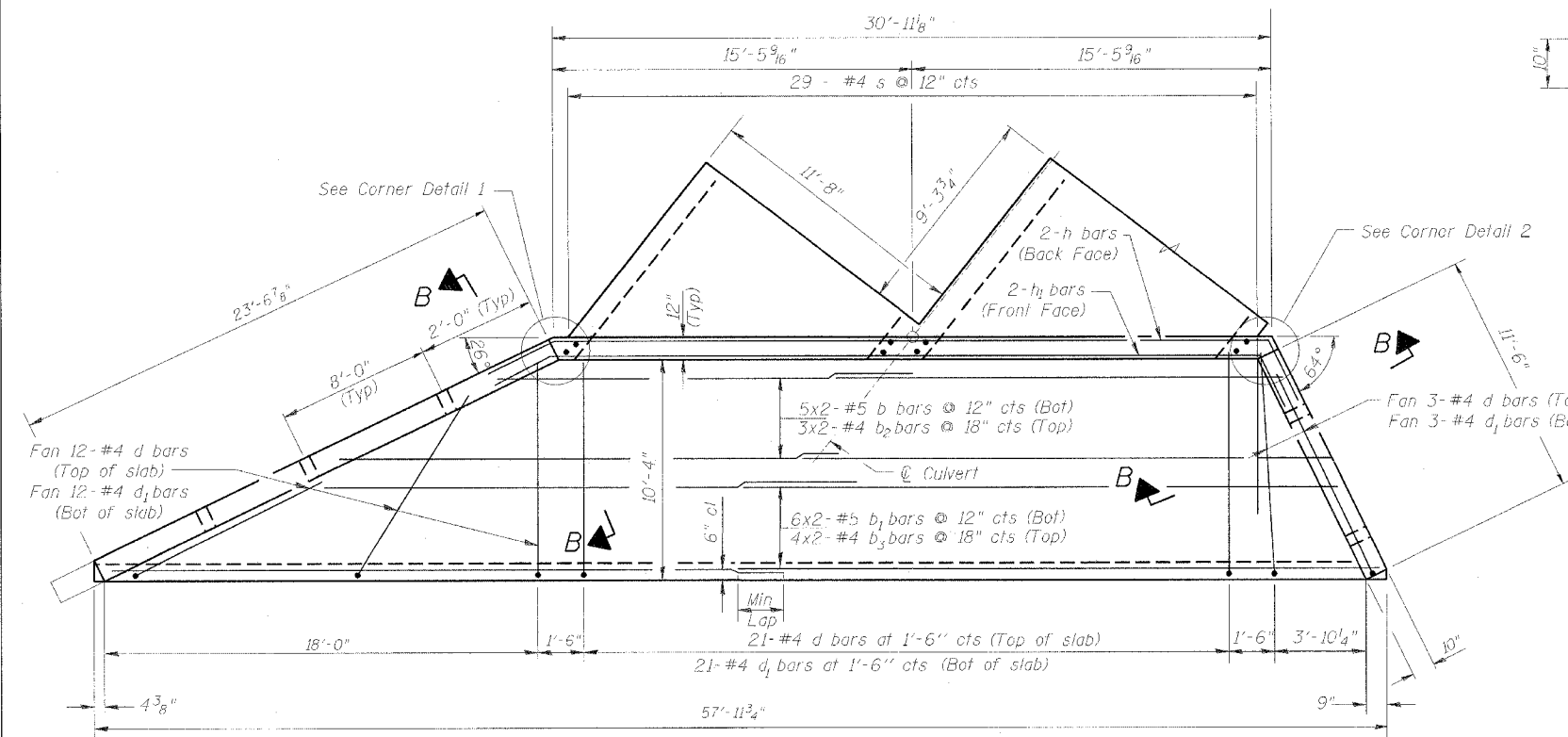
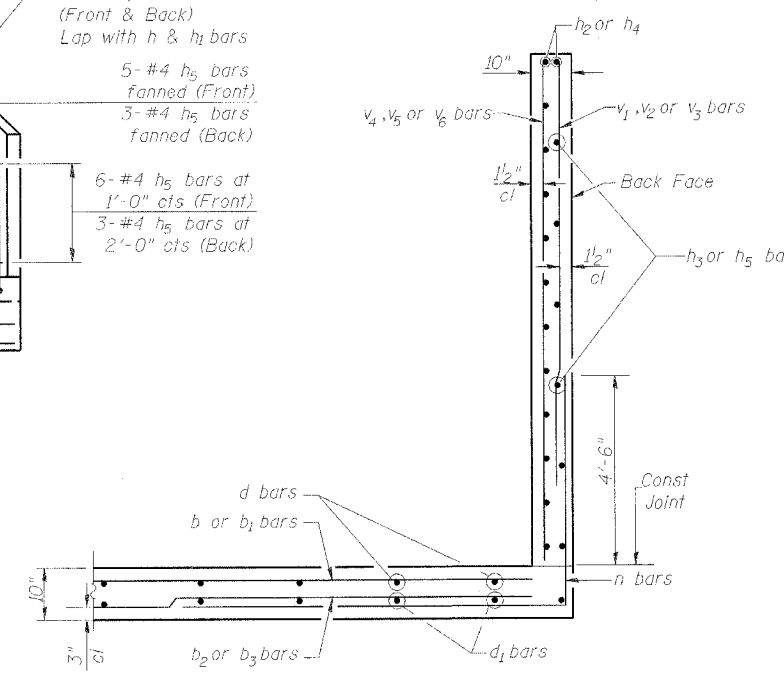
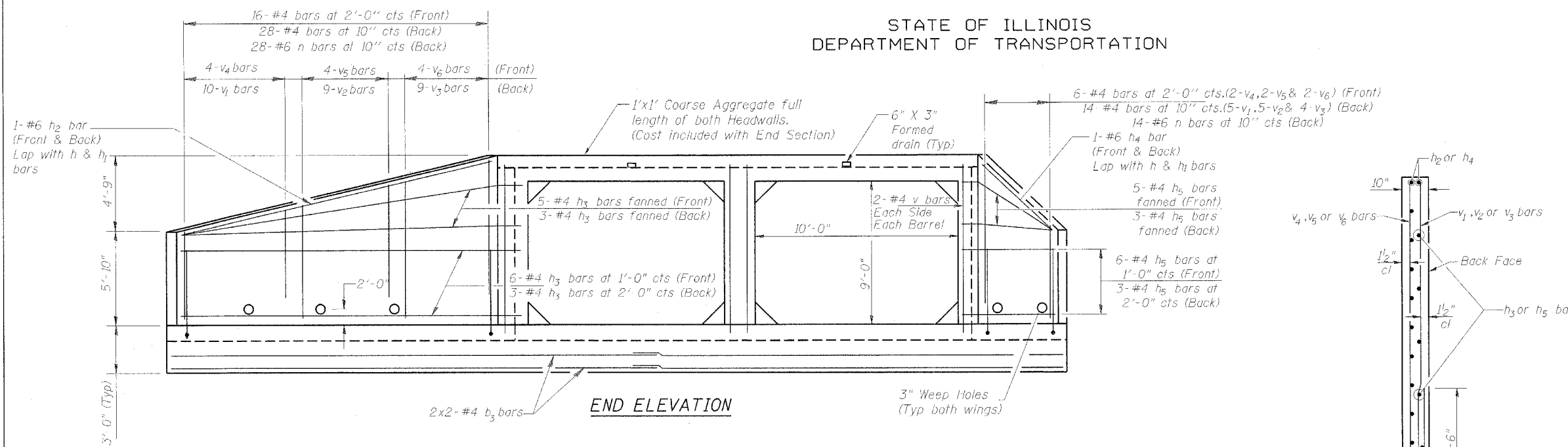


STATE OF ILLINOIS
DEPARTMENT OF TRANSPORTATION

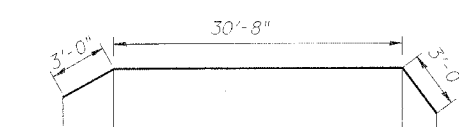
FAP RTE	SECTION	COUNTY	TOTAL SHEETS	SHEET NO
1379	(108-B-1) BR	STARK	43	16
STA	51+30.00	TO STA		
	ILLINOIS	IL RTE 91		

**** BILL OF MATERIAL**

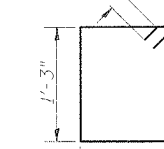
Bar	No.	Size	Length	Shape
a ₁	32	#7	12'-10"	U
a ₂	112	#7	14'-0"	U
a ₃	4	#4	11'-2"	U
a ₄	8	#4	14'-2"	U
b	20	#5	22'-7"	U
b ₁	24	#5	29'-8"	U
b ₂	12	#4	22'-5"	U
b ₃	24	#4	29'-6"	U
d	60	#4	13'-5"	U
d ₁	60	#4	10'-10"	U
h	4	#6	36'-10"	U
h ₁	4	#6	36'-8"	U
h ₂	4	#6	23'-9"	U
h ₃	34	#4	23'-8"	U
h ₄	4	#6	12'-3"	U
h ₅	34	#4	12'-10"	U
h ₆	24	#6	12'-6"	U
h ₇	36	#6	10'-6"	U
h ₈	36	#6	11'-9"	U
h ₉	36	#6	2'-6"	U
n(E)	84	#6	13'-3"	L
s	58	#4	4'-7"	□
v	24	#4	10'-10"	U
v ₁	30	#4	4'-6"	U
v ₂	28	#4	6'-2"	U
v ₃	26	#4	7'-9"	U
v ₄	12	#4	5'-6"	U
v ₅	12	#4	7'-2"	U
v ₆	12	#4	8'-9"	U
v ₇ (E)	72	#4	2'-3"	U
v ₈	72	#4	9'-0"	U
Concrete		Cu Yd	93.1	
Reinforcing Bars		Pound	11,560	
Reinforcing Bars, Epoxy Coated		Pound	1,780	



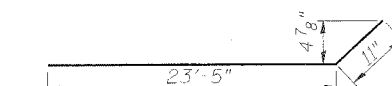
BAR h



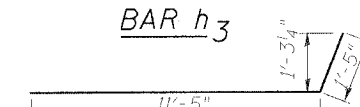
BAR h₁



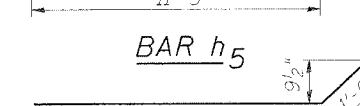
BAR s



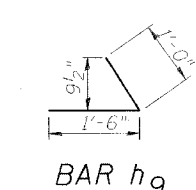
BAR h₃



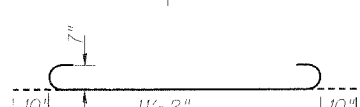
BAR h₅



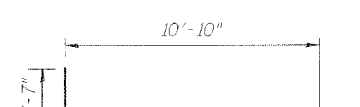
BAR h₈



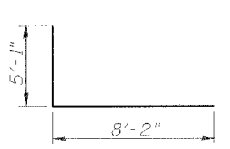
BAR h₉



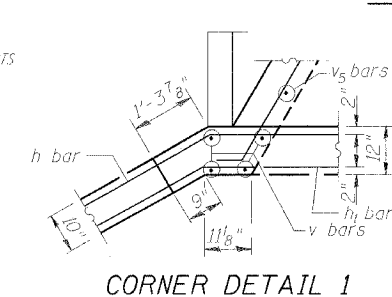
BAR a₁



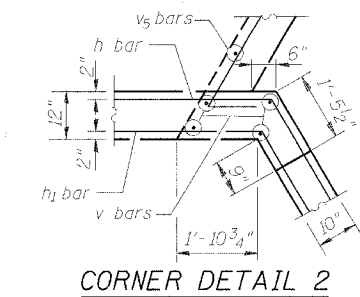
BAR d



BAR n



CORNER DETAIL 1



CORNER DETAIL 2

Bars indicated thus 1 x 2-#5 etc. indicates 1 line of bars with 2 lengths per line.
Reinforcement bars designated (E) shall be epoxy coated.
* Cut bars are used on both end sections
** Bill of Material is for two (2) endsections.
For information only.

BAR LAP

#4 1'-4" min
#5 1'-8" min

END SECTION DETAILS
FAS 1379 (IL RTE 91) OVER
JACK CREEK
SECTION (108B)BR
STARK COUNTY STA 51+30.00
SN 088-2004

HR HURST ROSCHE ENGINEERS, INC.
CONSULTING ENGINEERS & ARCHITECTS
1400 E. TREMONT ST.
HILLSBORO, ILLINOIS 62049

DESIGNED	BWP
CHECKED	JSP
DRAWN	BWP
CHECKED	JSP