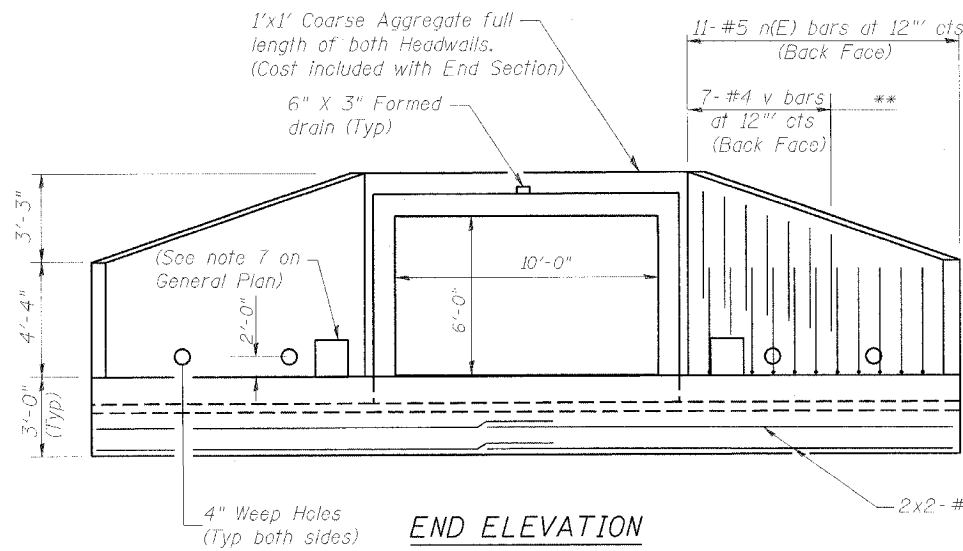


STATE OF ILLINOIS
DEPARTMENT OF TRANSPORTATION

SHEET 2
OF 2

FAS RTE	SECTION	COUNTY	TOTAL SHEETS	SHEET NO
1379	(108-B-1) BR	STARK	43	20
STA 61+35.31			ILLINOIS	IL RTE 91

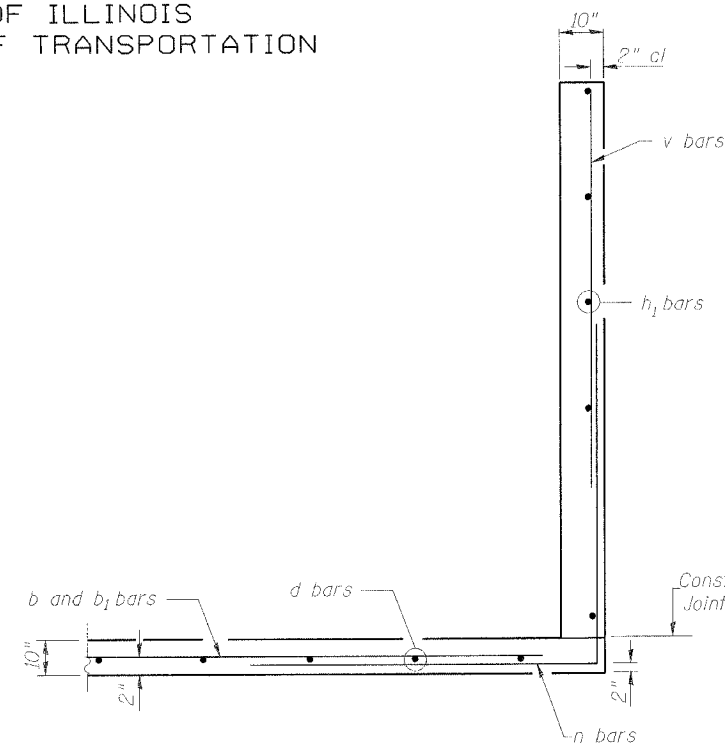


END ELEVATION

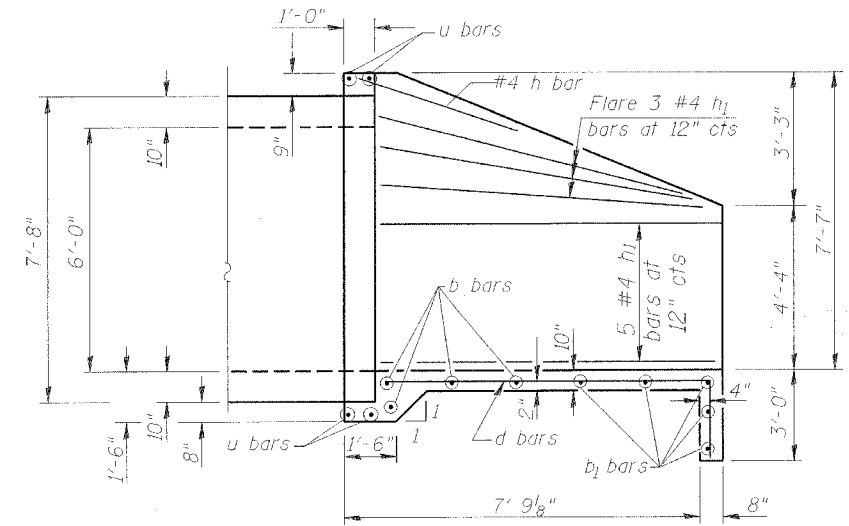
Note: Wingwall reinforcement typical for both walls.

**Min Lap w/#5 n(E) bars 1'-4"

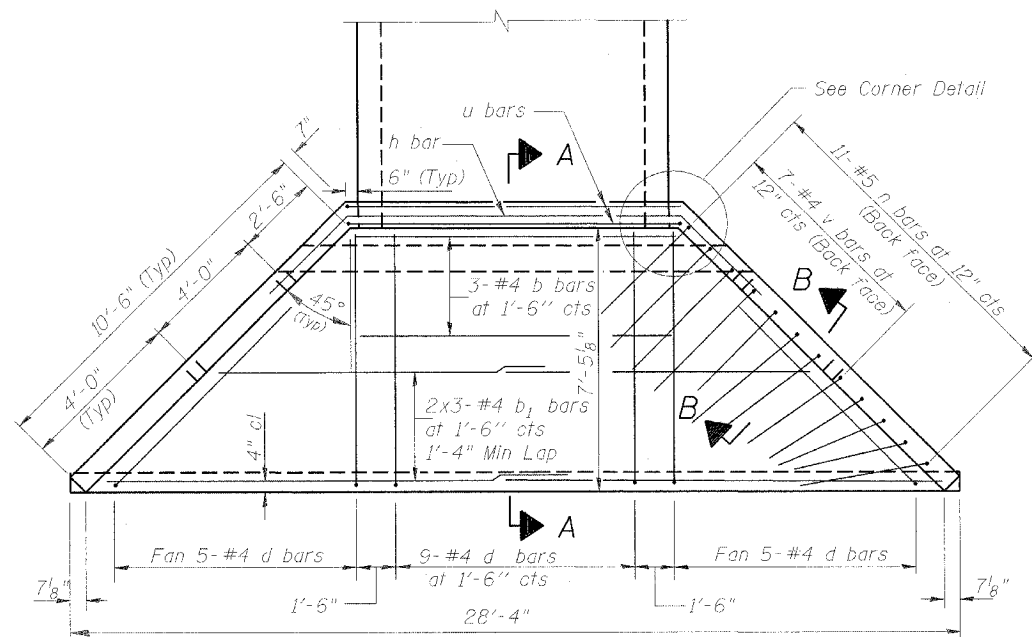
Note: Splice reinforcement to miss voids for field tile outlets.



SECTION B-B

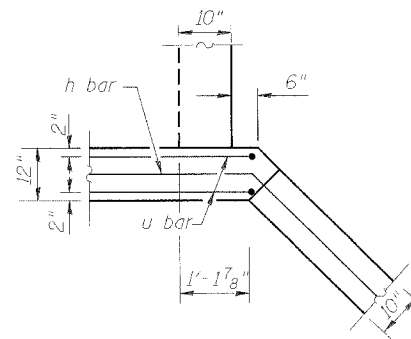


SECTION A-A



PLAN

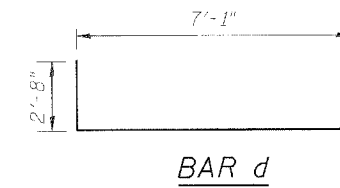
Note: Bars indicated thus 2 x 3-#4 etc. indicates 2 lines of bars with 3 lengths per line.



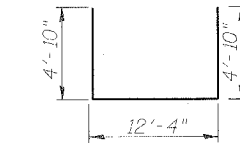
CORNER DETAIL
(Typical both corners)

BAR LAP

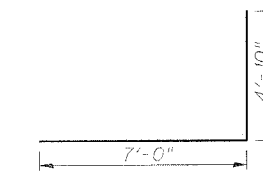
#4 - 1'-4" min



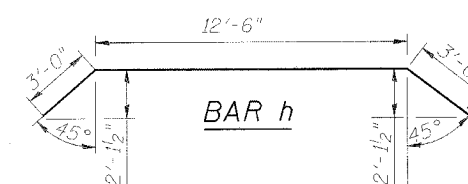
BAR d



BAR u



BAR n



BAR h

*** BILL OF MATERIAL**

Bar	No.	Size	Length	Shape
b	6	#4	12'-4"	—
b ₁	12	#4	14'-9"	—
d	38	#4	9'-9"	┌
h	2	#4	18'-6"	┌
h ₁	32	#4	10'-5"	—
n(E)	44	#5	11'-10"	┌
u	8	#4	22'-0"	┌
v	28	#4	4'-10"	—
Concrete			Cu Yd	26.0
Reinforcing Bars			Lb	871
Reinforcing Bars, Epoxy Coated			Lb	543

* Bill of Material is for two (2) end sections.
For information only.

END SECTION DETAILS
FAS 1379 (IL RTE 91) OVER
JACK CREEK TRIBUTARY
SECTION (108B)BR
STARK COUNTY STA 61+35.31

HR HURST-ROSCHKE ENGINEERS, INC.
CONSULTING ENGINEERS & ARCHITECTS
1400 E. TREMONT ST.
HILLSBORO, ILLINOIS 62049

DESIGNED	MLD
CHECKED	JSP
DRAWN	MLD
CHECKED	JSP