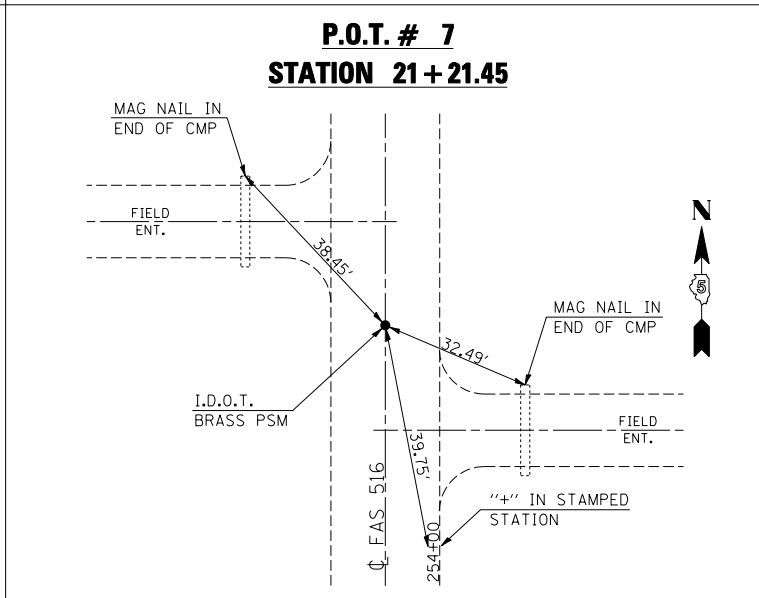
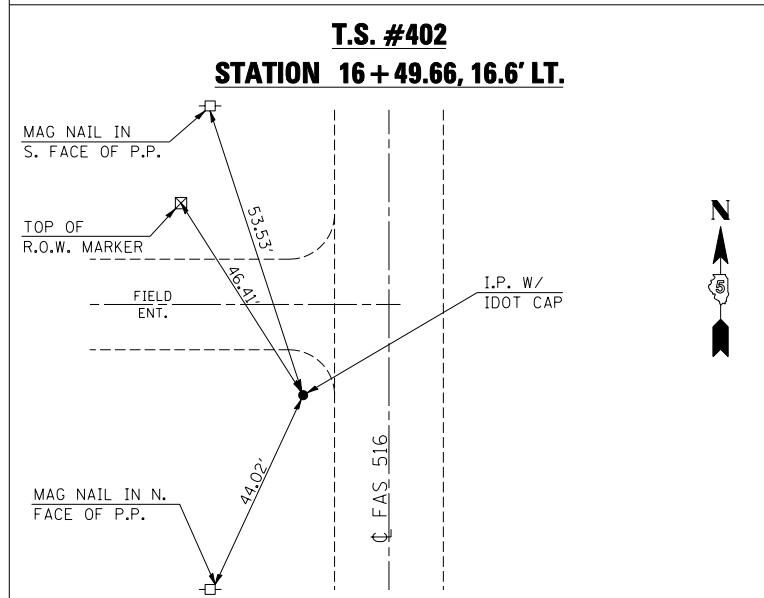
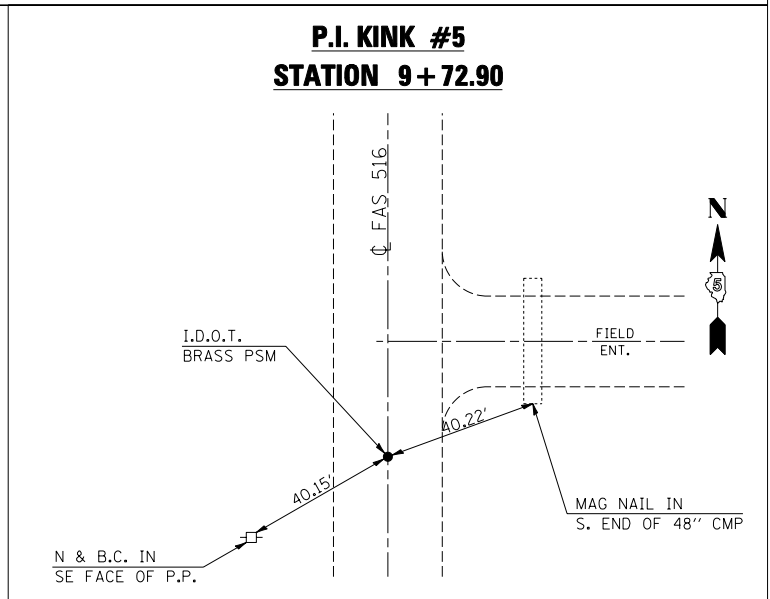
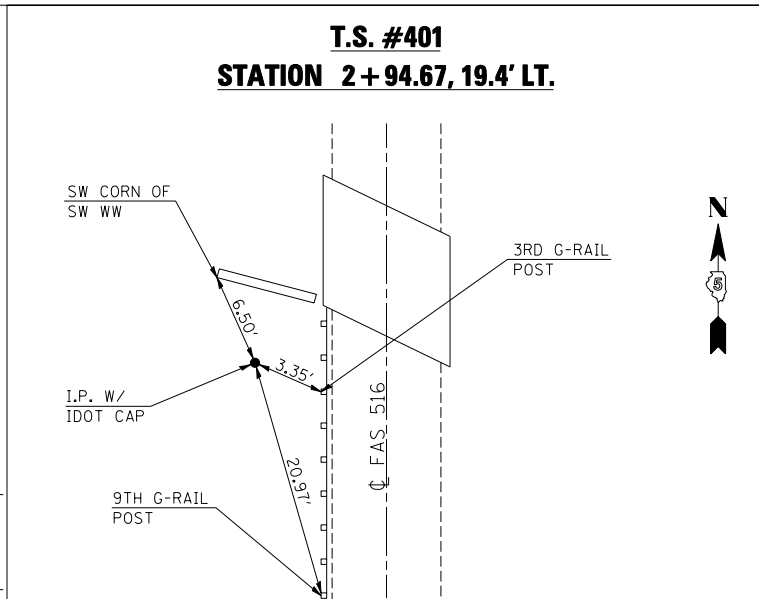
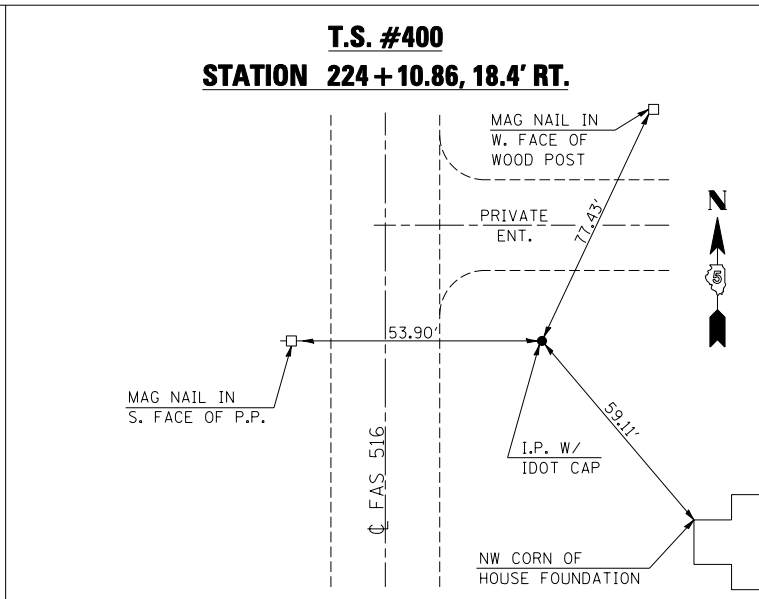
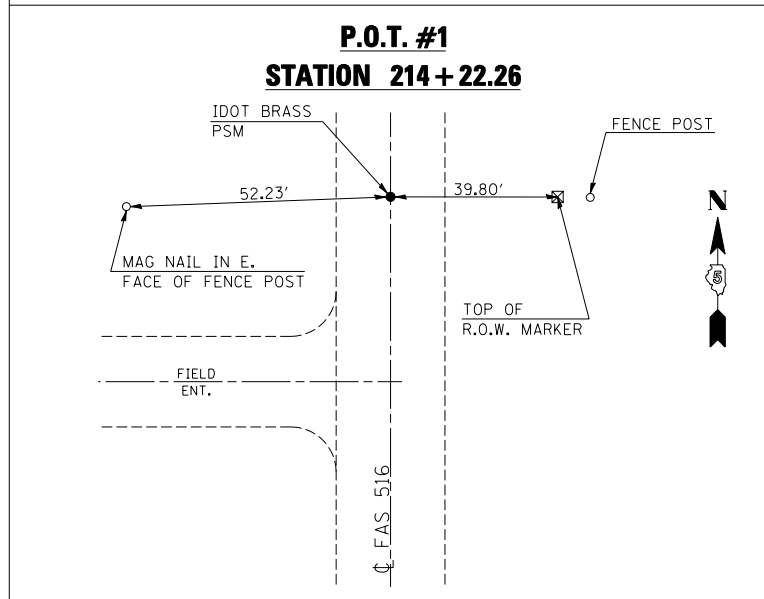


F.A.S. RTE.	SECTION	COUNTY	TOTAL SHEETS	SHEET NO.
516	241BR & 56BR	CHAMPAIGN	82	13
STA.		TO STA.		
FED. ROAD DIST. NO.	ILLINOIS	FED. AID PROJECT		

TIE POINTS

PROPOSED S.N. 010-0221



BENCHMARKS

PROPOSED S.N. 010-0221

- B.M. 4688-1** CHISELED SQUARE FROM THE INTERSECTION OF I-74 AND CH 12, GO NORTH 3.7 MILES TO THE MARK ON THE LEFT. SAID MARK IS A CHISELED SQUARE ON TOP OF THE WEST HEADWALL ON AN ACROSS THE ROAD BOX CULVERT. ELEV. = 671.93
- B.M. 4688-2** CHISELED SQUARE FROM THE INTERSECTION OF I-74 AND CH 12, GO NORTH 4.0 MILES TO THE MARK ON THE RIGHT. SAID MARK IS A CHISELED SQUARE ON THE NORTHEAST CORNER OF THE SOUTHEAST WINGWALL OF STRUCTURE NUMBER 010-0221. STATION 2+92.61, RT. 21.85 FT. ELEV. = 672.58
- B.M. 4688-3** CHISELED SQUARE FROM THE INTERSECTION OF I-74 AND CH 12, GO NORTH 4.2 MILES TO THE MARK ON THE LEFT. SAID MARK IS THE TOP CENTER OF A CONCRETE RIGHT OF WAY MARKER. ELEV. = 673.26

ILLINOIS DEPARTMENT OF TRANSPORTATION
TIE POINTS & BENCHMARKS
PROPOSED S.N. 010-0221
F.A.P. 516/(C.H. 12)
SECTION 241BR & 56BR
CHAMPAIGN COUNTY
SCALE: NOT TO SCALE
DATE: 05/15/06
DRAWN BY: B.B.P.
CHECKED BY: G.A.E.

PLOT DATE = 7/6/2006
FILE NAME = G:\projects\050304 (v8)\0221\details.dgn
USER NAME = pier.sombir