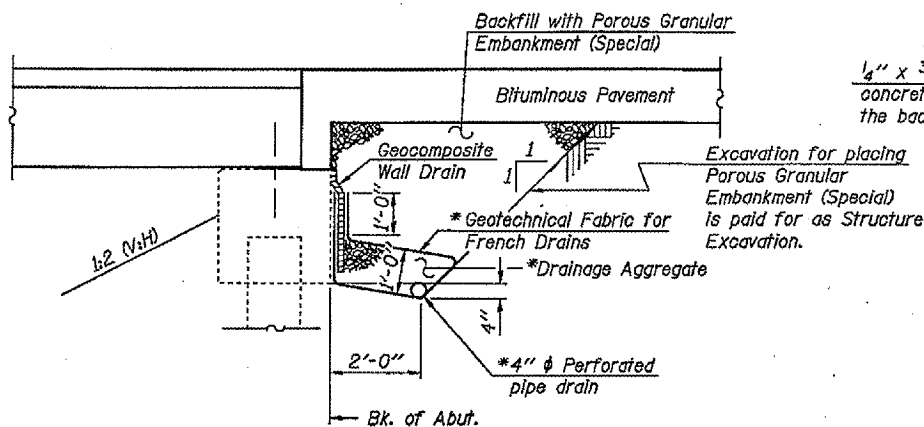


STATE OF ILLINOIS  
DEPARTMENT OF TRANSPORTATION

SHEET 2  
OF 5

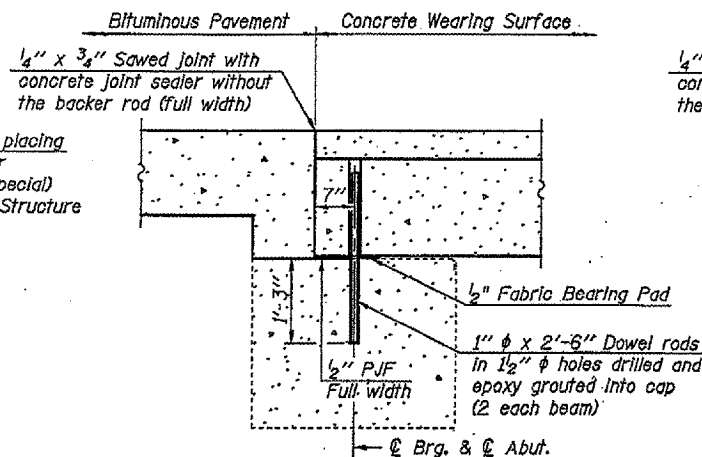
F.A.S. RTE.	SECTION	COUNTY	TOTAL SHEETS	SHEET NO.
516	241BR	CHAMPAIGN	82	16
FED. ROAD DIST. NO.	ILLINOIS FED. AID PROJECT	CONTRACT NO. T0359		



**SECTION THRU ABUTMENT**  
(Horiz. dim. @ Rt. L's)

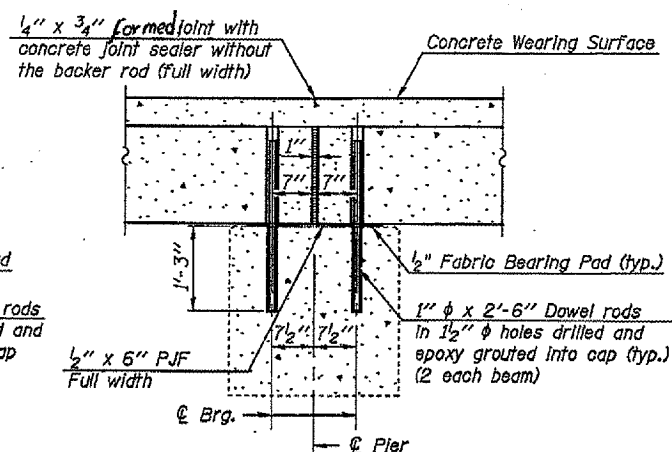
\* Included in the cost of Pipe Underdrains for Structures.

**Note:**  
All drainage system components shall extend parallel to the abutment back wall until they intersect the wingwalls or 2'-0" from the end of the wingwalls when the wings are parallel to the abutment. The pipe shall extend under the wingwall, if necessary, until intersecting the side slopes. The pipes shall drain into concrete headwalls. (See Article 601.05 of the Standard Specifications and Highway Standard 60110J).



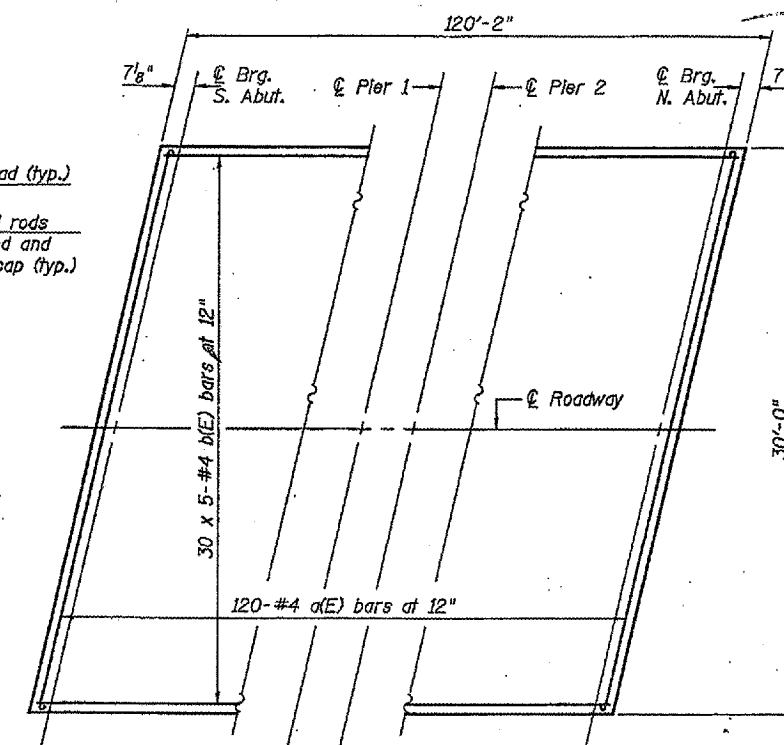
**SECTION THRU ABUTMENT**

**Notes:**  
After beams have been erected, holes shall be drilled into substructure and anchor dowels placed. Dowel holes shall be filled with non-shrink grout to top of beam and allowed to cure min. 24 hrs. prior to grouting the shear keys.  
All horizontal dimensions are at right angles to beam ends. See sheet 3 of 5 for bearing pad details.

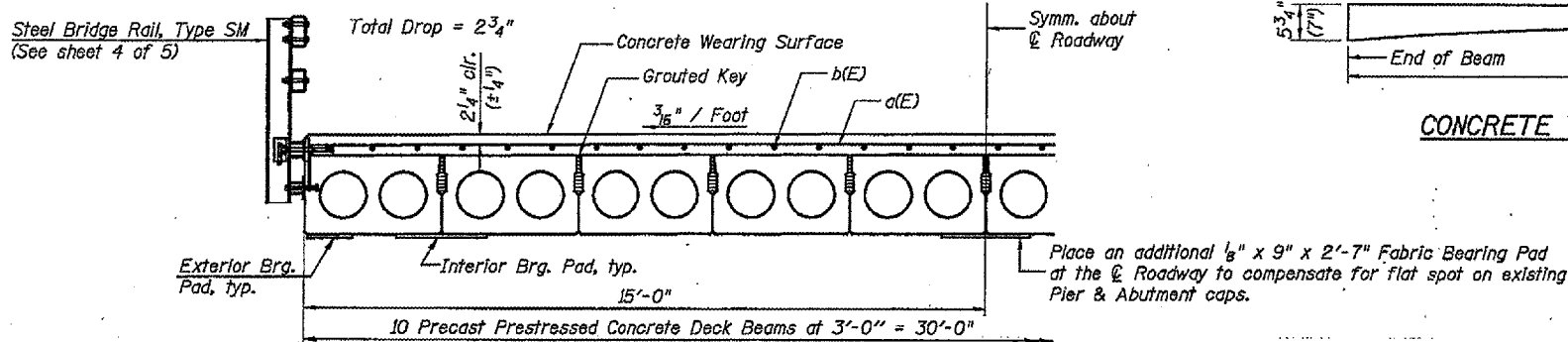


**SECTION THRU FIXED PIER**

1" jt. shall be filled with non-shrink grout. 1" dimension may vary to accommodate tolerance in beam lengths.



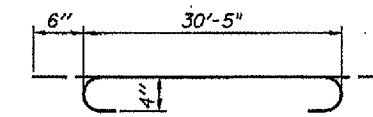
**PLAN - CONCRETE WEARING SURFACE**



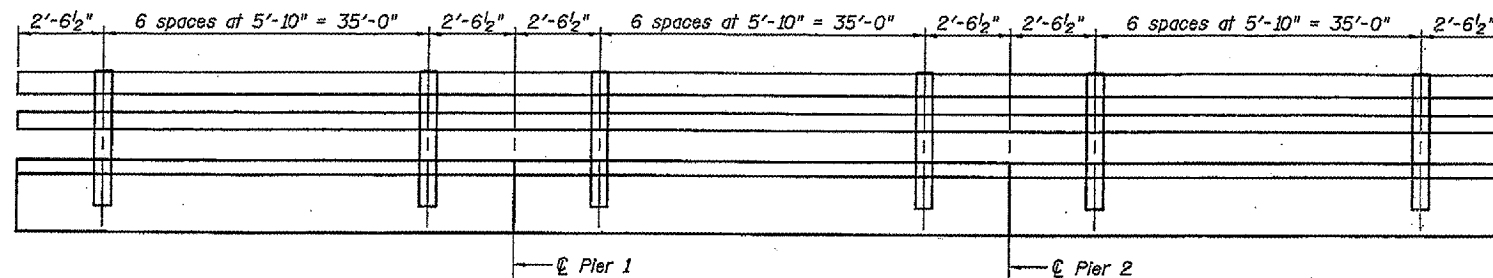
**HALF CROSS SECTION**

**CONCRETE WEARING SURFACE PROFILE**

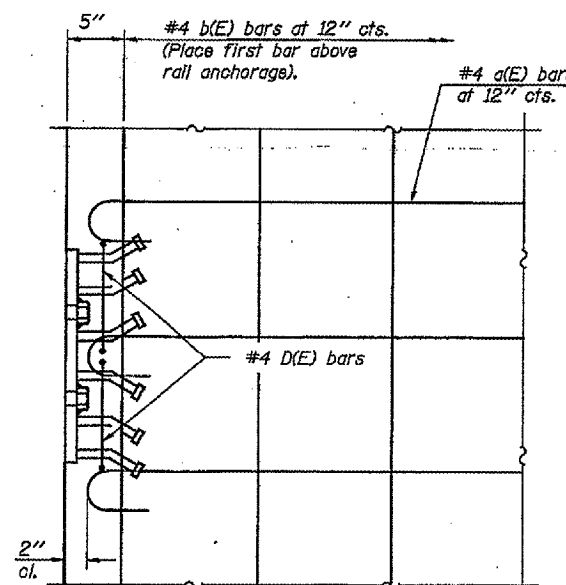
**MIN. BAR LAP**  
#4 = 1'-4"



**BAR a(E)**



**RAIL POST SPACING**



**PLAN AT RAIL POST ANCHOR**

**BILL OF MATERIAL**

Bar	No.	Size	Length	Shape
a(E)	120	#4	31'-5"	
b(E)	150	#4	25'-1"	—
Reinforcement Bars, Epoxy Coated			Pound	5040
Concrete Wearing Surface, 5"			Sq. Yd.	400

Reinforcement bars designated (E) shall be epoxy coated.  
Bars indicated thus 20 x 3-#5 etc. indicates 20 lines of bars with 3 lengths per line.

**SUPERSTRUCTURE DETAILS**

FAS 516 (CH 12) OVER  
UPPER SALT FORK DITCH  
FAS ROUTE 516 SECTION 241BR  
CHAMPAIGN COUNTY  
STATION 3+56.00  
STRUCTURE NO. 010-0221

**JD Johnson, Depp & Qulsberry**  
CONSULTING ENGINEERS  
Springfield, Illinois

DESIGNED: CDB	DRAWN: SJS
CHECKED: DCD	CHECKED: CDB/DCD

FILE: J:\DD\10088 IL-DSVW\Salt Fork Bridge\1-Salt Fork\Drawings\02superstr.dgn  
USER: DCD  
DATE: 07/18/2006 - 12:43:59