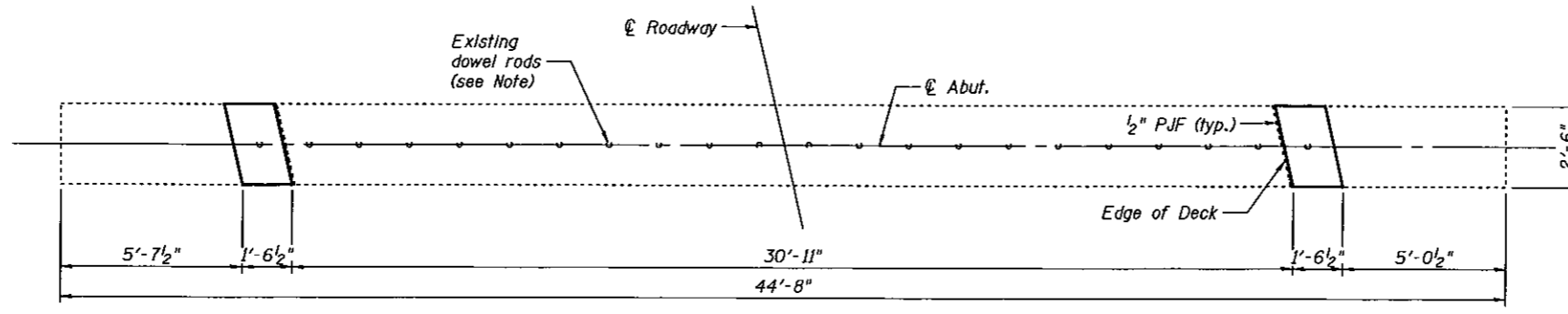


STATE OF ILLINOIS  
DEPARTMENT OF TRANSPORTATION

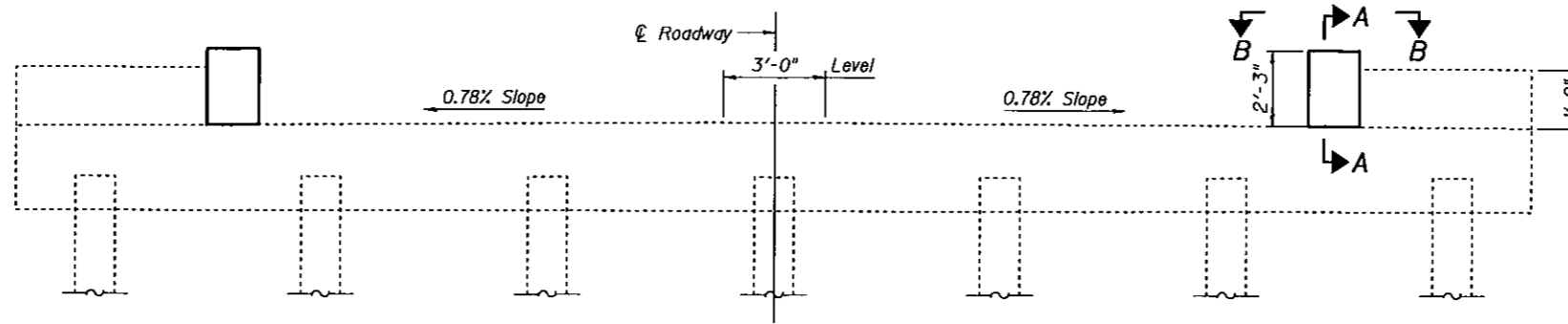
SHEET 5  
OF 5

F.A.S. RTE.	SECTION	COUNTY	TOTAL SHEETS	SHEET NO.
516	241BR	CHAMPAIGN	82	19
FED. ROAD DIST. NO.	ILLINOIS	FED. AID PROJECT		

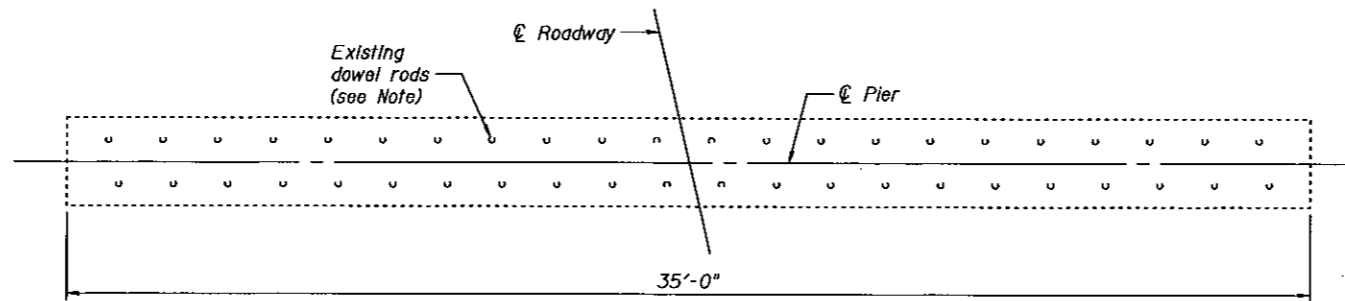
CONTRACT NO. 70359



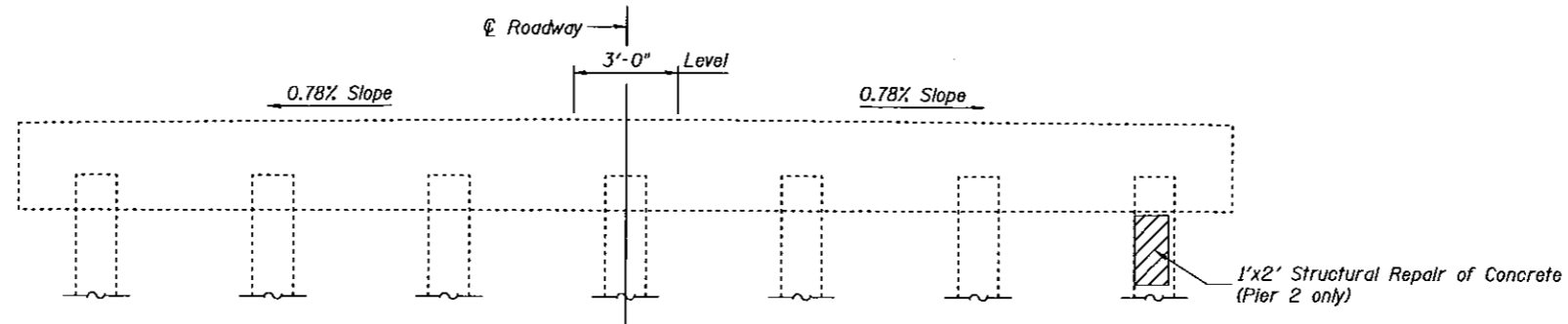
PLAN OF ABUTMENT



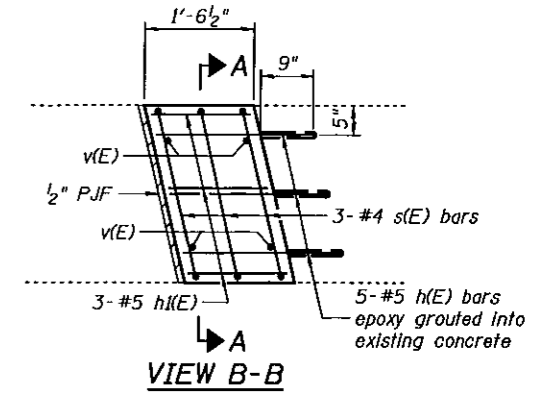
ELEVATION OF ABUTMENT  
(Typical both abutments)



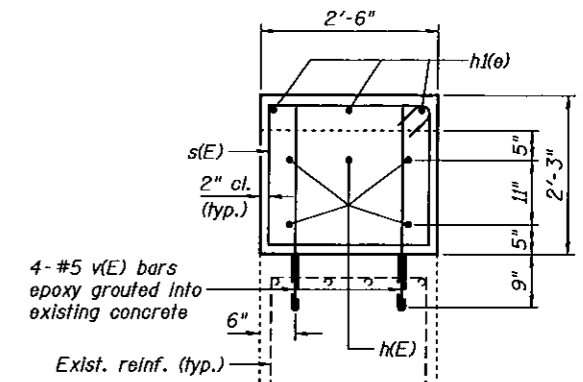
PLAN OF PIER



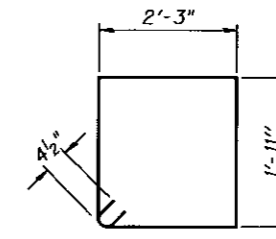
ELEVATION OF PIER  
(Facing North)



VIEW B-B



SECTION A-A



BAR s(E)

BILL OF MATERIAL

Bar	No.	Size	Length	Shape
h(E)	20	#5	2'-1"	—
h(E)	12	#5	1'-2"	—
s(E)	12	#4	9'-1"	□
v(E)	16	#5	2'-10"	—
Reinforcement Bars, Epoxy Coated			Pound	180
Concrete Structures			Cu. Yd.	1.2
Structural Repair of Concrete (Depth = < 5")			Sq. Ft.	2

Notes:  
Concrete at Abutments to be poured after new beams are in place.  
Burn existing dowel rods flush with existing concrete, grind smooth and seal with epoxy on each substructure unit. Cost is included with Removal of Existing Superstructures.

**Johnson, Depp & Quisenberry**  
CONSULTING ENGINEERS  
Springfield, Illinois

DESIGNED: CDB	DRAWN: SJS/PTR
CHECKED: DCD	CHECKED: CDB/DCD

ABUTMENTS & PIERS  
FAS 516 (CH 12) OVER  
UPPER SALT FORK DITCH  
FAS ROUTE 516 SECTION 241BR  
CHAMPAIGN COUNTY  
STATION 3+56.00  
STRUCTURE NO. 010-0221

FILE: F:\10138 IL\DSVV\138 Fork Bridge\05AbutPier.dgn

USER: P. RGY

DATE: 06/14/2006 - 13:59:12