

PAVING SCHEDULE

STATION	BIT. MAT'L PRIME COAT (TON)	AGG. PRIME COAT (TON)	BIT. CONC. BINDER CSE SUPER., N70 (TON)	BIT. CONC. SURF. CSE., SUPER., MIX "D", N70 (TON)	BIT. SURF. REMOVAL VAR DEPTH (SQ YD)	STRIP REFL CRACK CTL TREATMENT (FT)	BIT BSE CSE WIDENING (SQ YD)
107+59.00 TO 108+59.00	0.11	0.50	15.08	28.27	276.13	400.0	51.24
108+59.00 TO 108+89.00				11.00			
108+89.00 TO 109+89.00	0.11	0.50	15.81	29.64	284.88	400.0	52.08
TOTAL	0.22	1.00	30.89	68.91	561.01	800.0	103.32

THERMO. PAVEMENT MARKING SCHEDULE

STATION		PAVEMENT		BRIDGE	
		EDGE WHITE LINE (FT)	YELLOW SKIP DASH LINE 4" (FT)	EDGE WHITE LINE (FT)	YELLOW SKIP DASH LINE 4" (FT)
105+77.50 TO 107+59.00	¢		45.4		
107+59.00 TO 108+59.00	RT/LT	200.0			
107+59.00 TO 108+59.00	¢		25.0		
108+59.00 TO 108+89.00	RT/LT			60.0	
108+59.00 TO 108+89.00	¢				7.5
108+89.00 TO 109+89.00	RT/LT	200.0	25.0		
108+89.00 TO 111+84.5	¢		48.9		
SUB-TOTAL		400.0	144.3	60.0	7.5
TOTAL			544.3		67.5

TEMPORARY PAVEMENT MARKING SCHEDULE

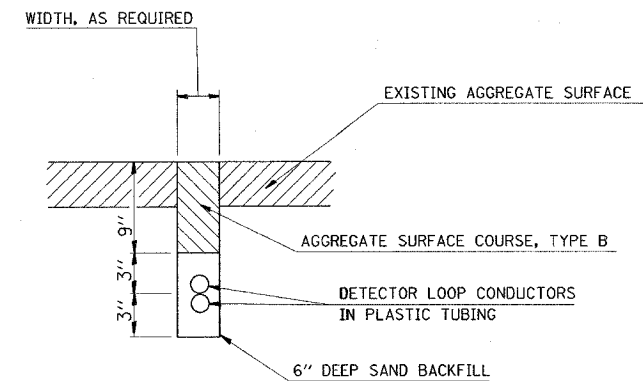
STATION		PAVEMENT	BRIDGE	PAVEMENT	BRIDGE	WORK ZONE PM REMOVAL (SQ FT)	PVMT MRKG REMOVAL (SQ FT)
		TEMP PVMT MRKG- LINE 4" (FT)	TEMP PVMT MRKG- LINE 4" (FT)	TEMP PVMT MRKG- LINE 6" (FT)	TEMP PVMT MRKG- LINE 6" (FT)		
105+77.5 TO 107+59.00	¢ STAGE I						30.25
105+77.5 TO 107+59.00	¢ & EDGE	151.5	30.0			60.5	
107+33.5 TO 110+07.00	WALL			243.5	30.0		
108+98.00 TO 111+84.50	¢ & EDGE	265.5	30.0			98.5	
107+33.50 TO 110+07.00	WALL			243.5	30.0		
109+89.00 TO 111+84.50	¢ STAGE II						32.6
SUB-TOTAL		417.0	60.0	487.0	60.0		
TOTAL			477.0		547.0	159.0	62.85

GUARDRAIL SCHEDULE

LOCATION		SPBGR REMOVAL (FT)	TBT-T1 (SPECIAL) (EA)	SPBGR, TYA (FT)	TBT-T6A (EA)	GUARDRAIL MKRS (EA)
STA	STA					
106+04.0	TO 108+35.5		1	150	1	3
107+57.5	TO 108+35.5	78.0				
107+42.5	TO 108+36.5		1	12.5	1	2
107+71.5	TO 108+36.0	65.0				
109+12.0	TO 111+18.5		1	125	1	4
109+12.0	TO 109+88.0	76.0				
109+13.0	TO 111+19.5		1	125	1	3
109+13.0	TO 109+92.0	79.0				
TOTAL		298.0	4	412.5	4	12

EARTHWORK SCHEDULE

STATION	CUT (SQ FT)	FILL (SQ FT)	EARTH EXCAV. (CU YD)	EARTH EXC. ADJTD FOR SHRINK. (CU YD)	EMBANKMENT (CU YD)	EARTHWORK BAL WASTE (+) SHORTAGE (-) (CU YD)
106+00.0	0.0	1.1	0.0	0.0	0.8	-0.8
106+25.0	0.0	0.7	0.0	0.0	0.5	-0.5
106+50.0	0.0	0.4	0.0	0.0	0.3	-0.3
106+75.0	0.0	0.3	0.0	0.0	0.6	-0.6
107+00.0	0.0	1.1	0.0	0.0	1.3	-1.3
107+25.0	0.0	1.7	0.0	0.0	1.9	-1.9
107+50.0	0.0	2.5	2.7	2.0	6.1	-4.0
107+75.0	5.9	10.6	5.4	4.0	10.5	-6.5
108+00.0	5.7	12.1	5.3	4.0	12.5	-8.5
108+25.0	5.8	14.8	2.7	2.0	6.9	-4.8
108+50.0	0.0	0.0				
109+00.0	0.0	0.0	3.4	2.6	4.2	-1.6
109+25.0	7.4	9.0	7.8	5.8	10.4	-4.6
109+50.0	9.4	13.5	7.8	5.8	12.3	-6.5
109+75.0	7.4	13.1	3.4	2.6	8.9	-6.4
110+00.0	0.0	6.2	0.0	0.0	4.3	-4.3
110+25.0	0.0	3.0	0.0	0.0	2.4	-2.4
110+50.0	0.0	2.2	0.0	0.0	1.8	-1.8
110+75.0	0.0	1.7	0.0	0.0	1.3	-1.3
111+00.0	0.0	1.0	0.0	0.0	1.5	-0.5
111+00.0	0.0	0.0				
TOTAL			38.5	28.9	87.5	-58.6



DETAIL
DETECTOR LOOP INSTALLED IN TRENCH

INSTALLATION IS TO BE DONE IN CONFORMANCE WITH THE REQUIREMENTS OF THE PLANS AND SECTION 886 OF THE STANDARD SPECIFICATIONS WITH THE FOLLOWING EXCEPTIONS:

1. SLOTS ARE TO BE TRENCHED INSTEAD OF SAWED.
2. THIS WORK SHALL NOT BE PAID FOR SEPERATELY BUT SHALL BE INCLUDED IN THE COST OF TEMPORARY BRIDGE TRAFFIC SIGNALS - 1 EACH.

REVISIONS		ILLINOIS DEPARTMENT OF TRANSPORTATION SCHEDULE OF QUANTITIES & DETECTOR LOOP DETAIL
NAME	DATE	
		FAP ROUTE 789 SECTION 68-BR-1 MADISON COUNTY

SCALE: VERT. _____
HORIZ. _____
DATE _____ DRAWN BY _____
CHECKED BY _____