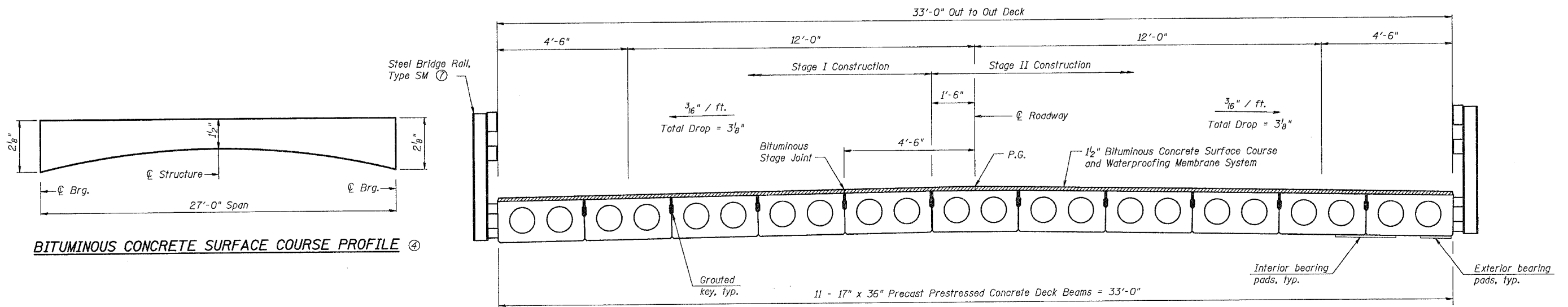


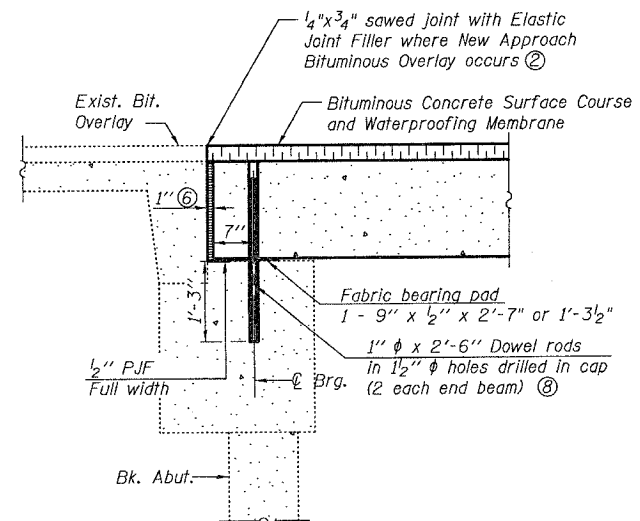
STATE OF ILLINOIS  
DEPARTMENT OF TRANSPORTATION

ROUTE NO.	SECTION	COUNTY	SHEETS	SHEET	SHEET NO.
FAP 789	56-BR-1	MADISON	23	1/3	8 SHEETS
FED. ROAD DIST. NO. 7		ILLINOIS	FED. AID PROJECT		

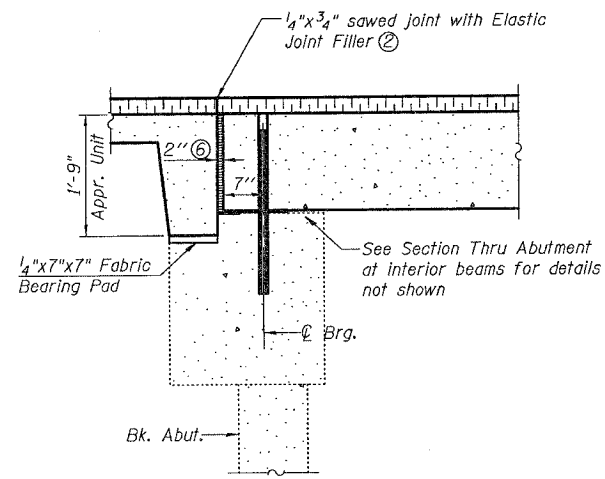
Contract #76965



**CROSS SECTION**  
(Looking East)

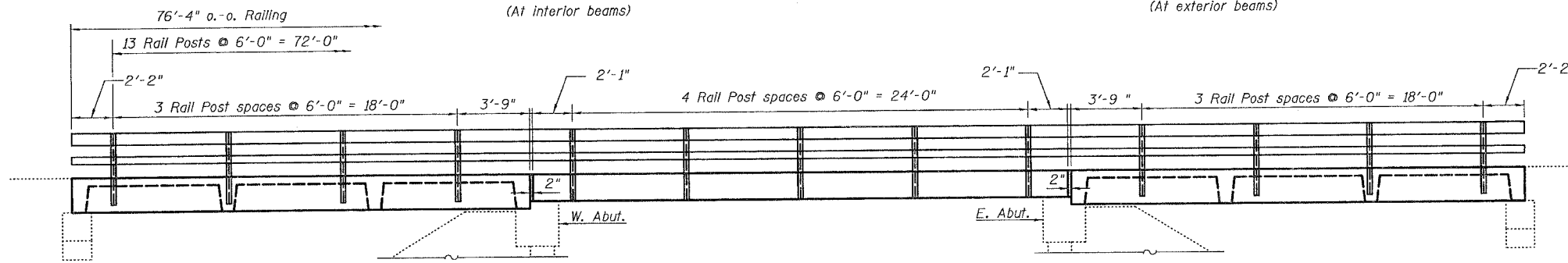


**SECTION THRU ABUTMENT**  
(At interior beams)



**SECTION THRU ABUTMENT**  
(At exterior beams)

- Notes:
- After beams have been erected, holes shall be drilled into substructure and anchor dowels placed. Dowel holes shall be filled with non-shrink grout to top of beam and allowed to cure min. 24 hrs. prior to grouting the shear keys.
  - Dowel rods drilled in cap, Elastic Joint Filler, and P.J.F. are included in the cost of Precast Prestressed Concrete Deck Beams (17" depth).
  - See sheet 5 of 8 for bearing pad details.
  - Thicknesses shown are for Beams 1 thru 5 and 7 thru 11. Thickness for Beam 6 will vary from those shown at beam edges to 1/4" additional at  $\phi$  Roadway.
  - Bituminous Concrete Surface Course and Waterproofing Membrane to be placed after grouting the shear keys and applying Portland Cement Mortar Fairing Course.
  - End Joint shall be filled with non-shrink grout. Dimension may vary to accommodate tolerance in beam lengths. Cost included with Precast Prestressed Concrete Deck Beams (17" depth).
  - For details of Type SM Steel Bridge Rail Side Mounted, see sheet 7 of 8.
  - Existing dowel rods shall be burned off flush with the top of the existing concrete. Cost to be included in the cost of Removal of Existing Superstructures.



**TYPE SM STEEL BRIDGE RAIL SIDE MOUNTED**  
**RAIL POST SPACING**

**SUPERSTRUCTURE DETAILS**  
**IL ROUTE 143 OVER LITTLE MOONEY CREEK**  
**F.A.P. ROUTE 789 - SECTION 56-BR-1**  
**MADISON COUNTY**  
**STA. 108+74**  
**STRUCTURE NO. 060-0147**

PLOT DATE = #DATE#  
FILE NAME = #FILE#  
PLOT SCALE = #SCALE#  
USER NAME = #USER#