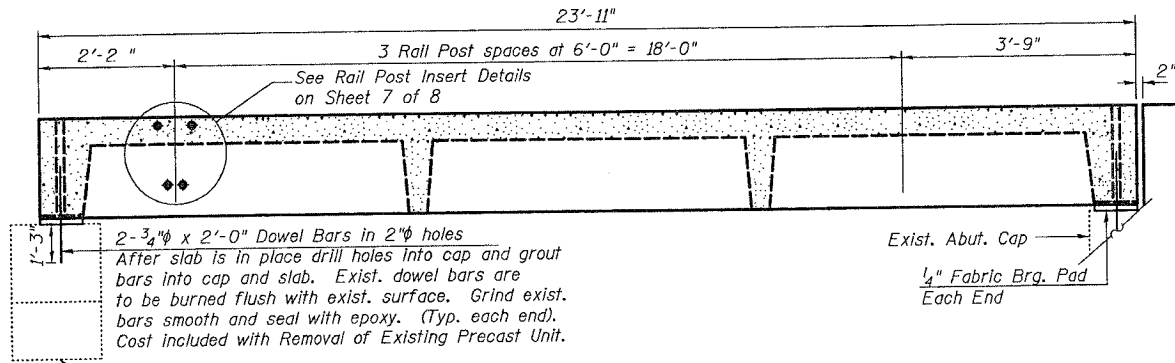


STATE OF ILLINOIS
DEPARTMENT OF TRANSPORTATION

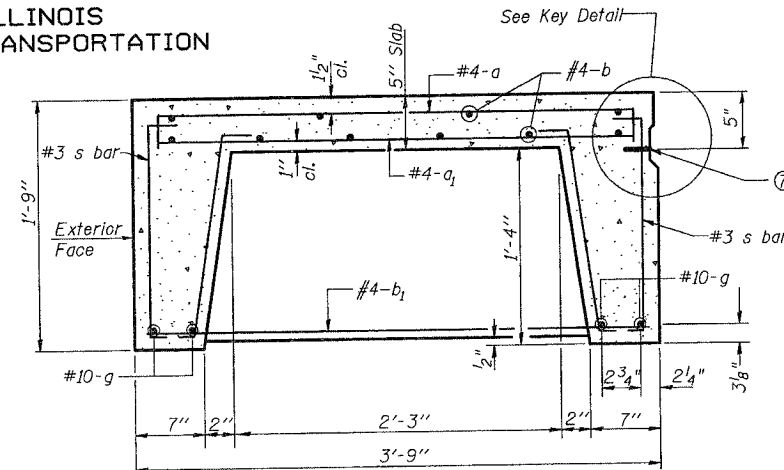
| | | | | |
|-----------------------|---------|----------|-----------------|-------------|
| ROUTE NO. | SECTION | COUNTY | SHEET | SHEET NO. 6 |
| FAP 789 | 56-BR-1 | MADISON | 23 | 15 |
| FED. ROAD DIST. NO. 7 | | ILLINOIS | PRELIM. PROJECT | |

Contract # 76965

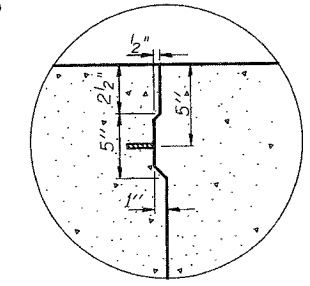


ELEVATION

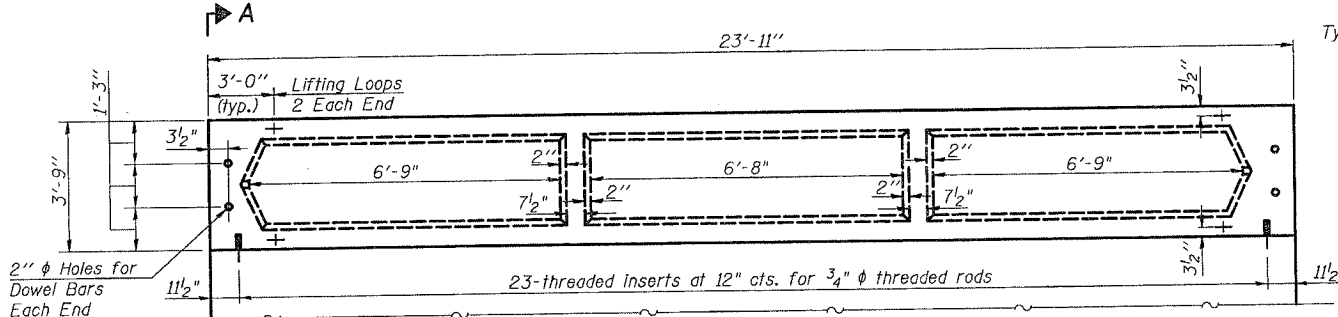
Note: Furnish 2 Right Hand Units and 2 Left Hand Units



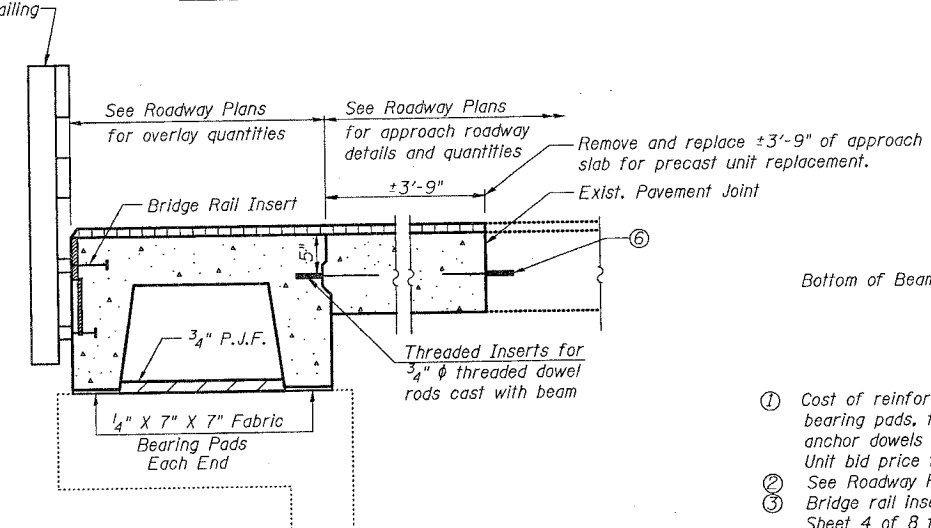
SECTION THRU PRECAST UNIT



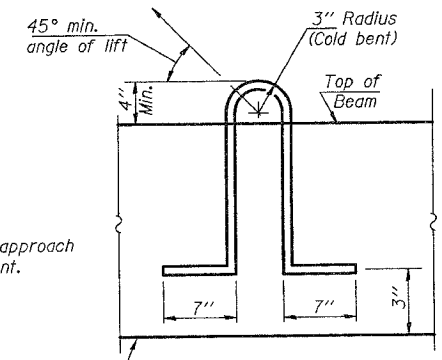
KEY DETAIL



PLAN



SECTION A-A



LIFTING LOOP DETAIL

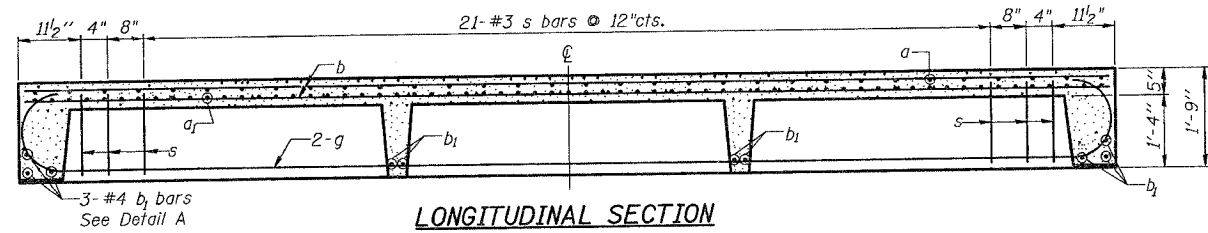
Approved alternate may be substituted for the above.

NOTES

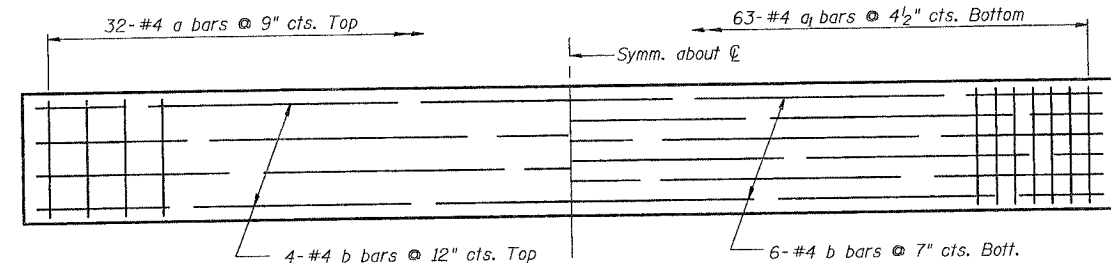
- Cost of reinforcement and accessories cast into slab unit, bearing pads, furnishing, drilling for, placing and grouting anchor dowels and 3/4" dowel rods is included in Unit bid price for Precast Concrete Bridge Slab.
- See Roadway Plans for Approach Slab Details.
- Bridge rail inserts shall be cast in precast beams. See Sheet 4 of 8 for rail post spacing and sheet 7 of 8 for rail details.
- Lifting loops shall be 2-1/2"-270 ksi strands, as shown. Strands shall conform to the requirements of AASHTO M203
- The Precast Concrete Bridge Slab shall be erected and aligned with the exterior face of the exterior Deck Beam after Deck Beams are in final position.
- Epoxy Grout bars 9" into existing approach in accordance with Article 584 of the Standard Specifications.
- Threaded inserts with 3/4" threaded dowel rods cast with beam @ 12" cts. Cost included with Precast Concrete Bridge Slab.
- Tack welding of stirrups to bottom longitudinal reinforcement bars will not be permitted except as otherwise authorized in writing by the Engineer.

BILL OF MATERIAL

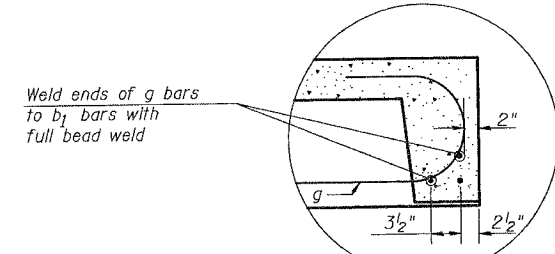
| ITEM | UNIT | QUAN. |
|----------------------------------|---------|-------|
| Precast Concrete Bridge Slab | Sq. Ft. | 359 |
| Removal of Existing Precast Unit | Sq. Ft. | 359 |



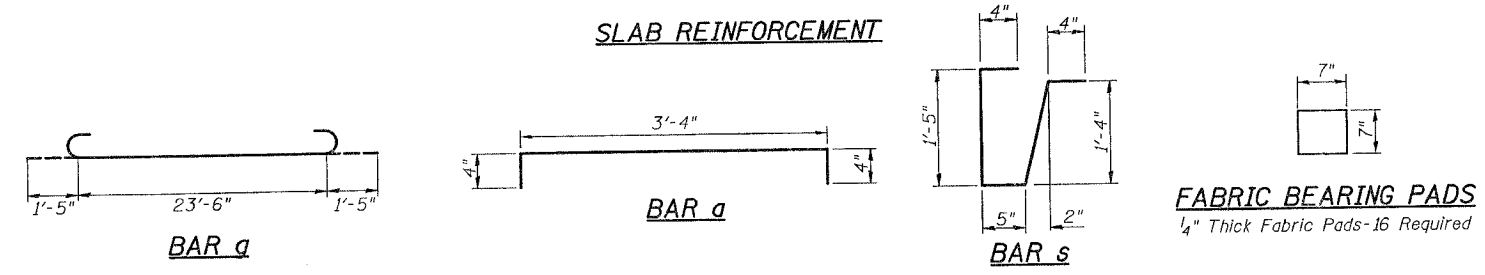
LONGITUDINAL SECTION



SLAB REINFORCEMENT



DETAIL A



The surface of the member shall not deviate more than 1/1200 of the full length of the member from a straight line connecting the two end points on the member's surface. In addition to State inspection and prior to erection, the beam shall be approved by the resident Engineer at the jobsite. The units shall remain on the bottom supporting forms until the concrete has attained a compressive strength of not less than 3,500 pounds per square inch.

APPROACH BEAM DETAILS
IL ROUTE 143 OVER LITTLE MOONEY CREEK
F.A.P. ROUTE 789 - SECTION 56-BR-1
MADISON COUNTY
STA. 108+74
STRUCTURE NO. 060-0147