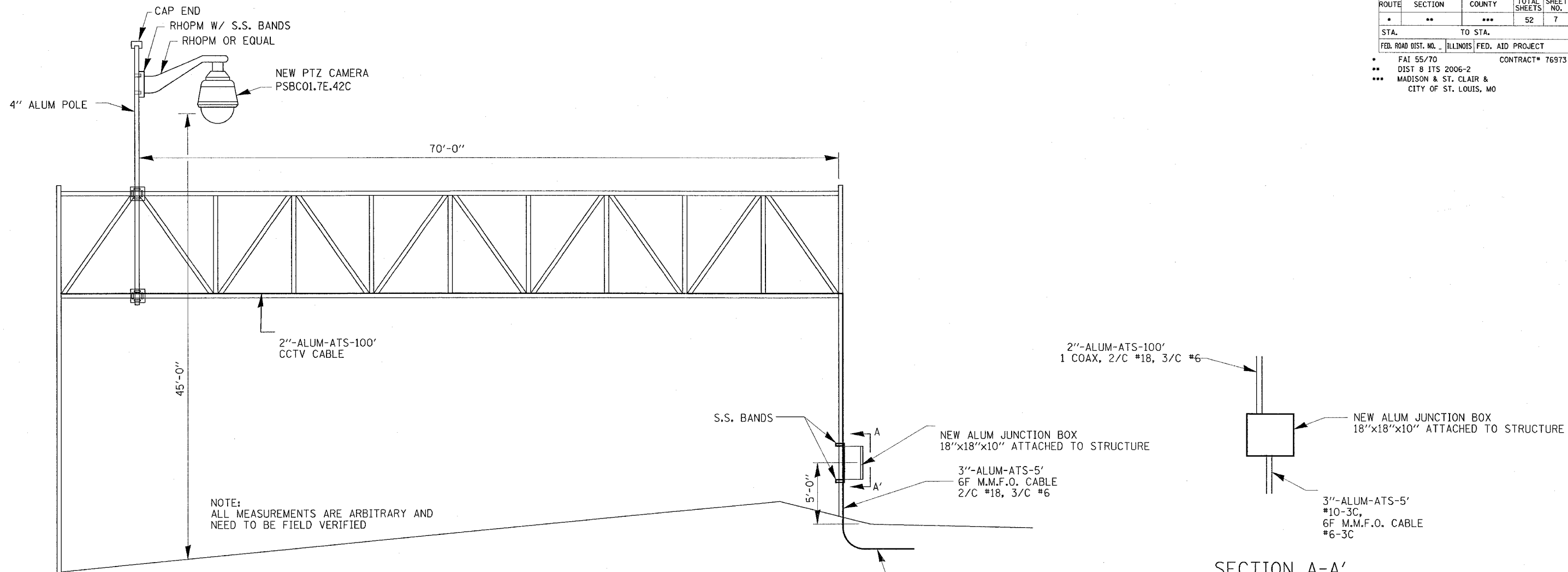


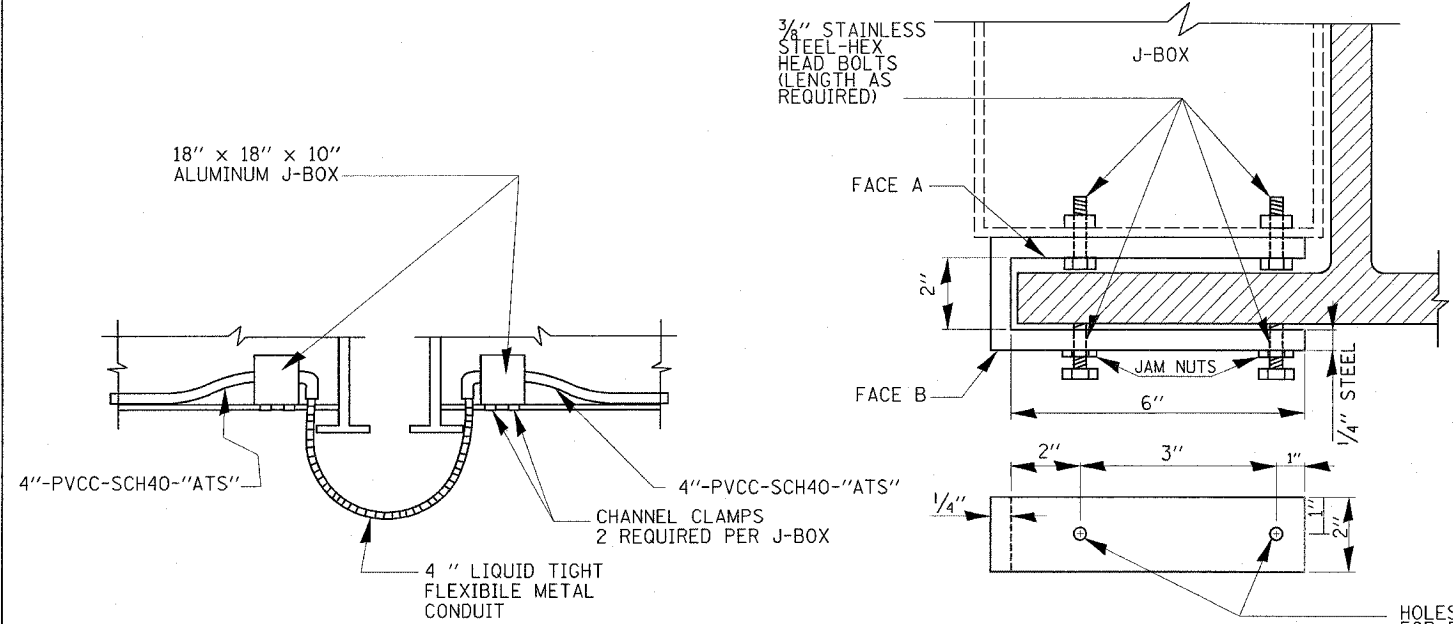


ROUTE	SECTION	COUNTY	TOTAL SHEETS	SHEET NO.
*	**	***	52	7
STA.		TO STA.		
FED. ROAD DIST. NO.		ILLINOIS FED. AID PROJECT		
* FAI 55/70		CONTRACT# 76973		
** DIST 8 ITS 2006-2				
*** MADISON & ST. CLAIR & CITY OF ST. LOUIS, MO				



NOTE:  
ALL MEASUREMENTS ARE ARBITRARY AND  
NEED TO BE FIELD VERIFIED

SECTION A-A'



TYPICAL CONDUIT EXPANSION JOINT

VIEW OF FACE A & B  
CHANNEL CLAMP DETAIL D

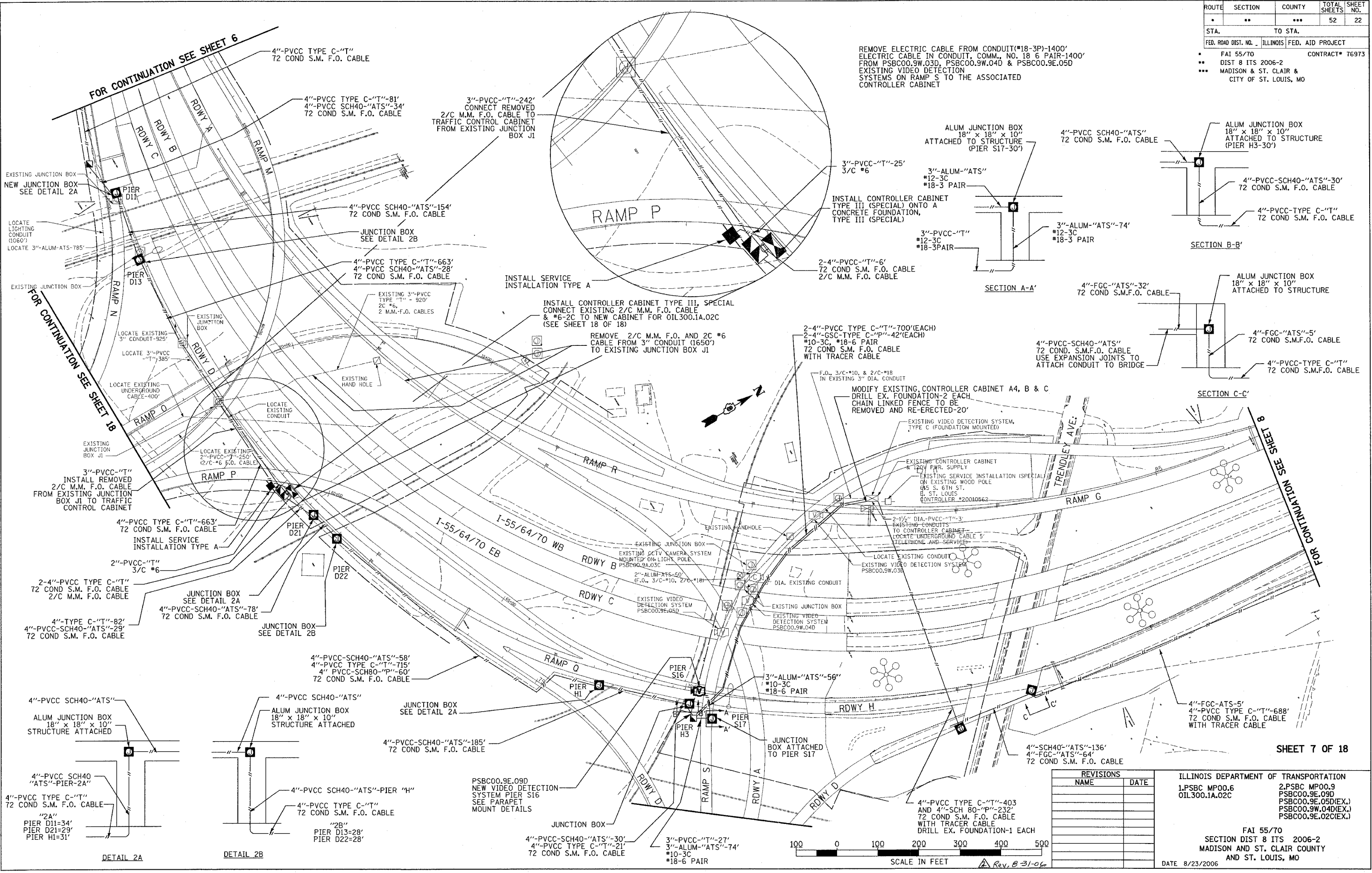
Rev. 8-31-06

REVISIONS	
NAME	DATE

ILLINOIS DEPARTMENT OF TRANSPORTATION  
  
TRUSS MOUNT CCTV DETAILS  
  
FAI 55/70  
SECTION DIST 8 ITS 2006-2  
MADISON AND ST. CLAIR COUNTY  
AND ST. LOUIS, MO  
  
DATE 8/23/2006

PLOT DATE = 8/23/2006  
FILE NAME = c:\projects\aed11805\electrical\truss\truss.dgn  
PLOT SCALE = 1/8" = 1'-0"  
REFERENCE = SHEET#

ROUTE	SECTION	COUNTY	TOTAL SHEETS	SHEET NO.
•	••	•••	52	22
STA.	TO STA.			
FED. ROAD DIST. NO.	ILLINOIS FED. AID PROJECT			
•	FAI 55/70	CONTRACT# 76973		
••	DIST 8 ITS 2006-2			
•••	MADISON & ST. CLAIR & CITY OF ST. LOUIS, MO			



REMOVE ELECTRIC CABLE FROM CONDUIT(#18-3P)-1400' ELECTRIC CABLE IN CONDUIT, COMM., NO. 18 6 PAIR-1400' FROM PSBC00.9W.03D, PSBC00.9W.04D & PSBC00.9E.05D EXISTING VIDEO DETECTION SYSTEMS ON RAMP S TO THE ASSOCIATED CONTROLLER CABINET

ALUM JUNCTION BOX 18" x 18" x 10" ATTACHED TO STRUCTURE (PIER S17-30')

4"-PVCC SCH40-"ATS" 72 COND S.M. F.O. CABLE

ALUM JUNCTION BOX 18" x 18" x 10" ATTACHED TO STRUCTURE (PIER H3-30')

4"-PVCC-SCH40-"ATS"-30' 72 COND S.M. F.O. CABLE  
 4"-PVCC-TYPE C-"T" 72 COND S.M. F.O. CABLE

SECTION A-A'

4"-FGC-"ATS"-32' 72 COND S.M.F.O. CABLE

ALUM JUNCTION BOX 18" x 18" x 10" ATTACHED TO STRUCTURE

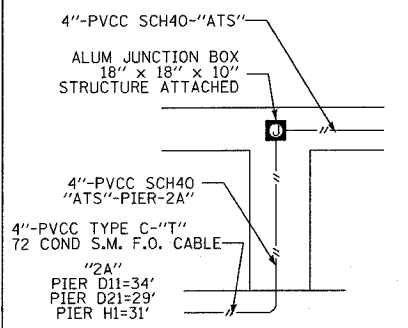
4"-FGC-"ATS"-5' 72 COND S.M.F.O. CABLE  
 4"-PVCC-TYPE C-"T" 72 COND S.M.F.O. CABLE

SECTION C-C'

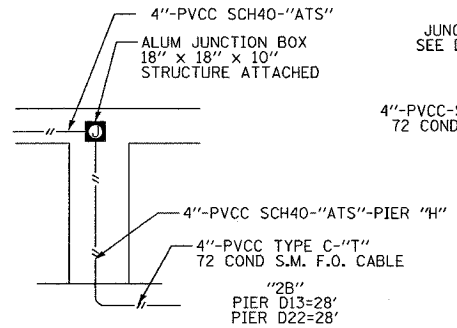
FOR CONTINUATION SEE SHEET 6

FOR CONTINUATION SEE SHEET 18

FOR CONTINUATION SEE SHEET 8



DETAIL 2A



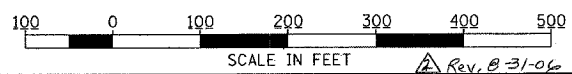
DETAIL 2B

REVISIONS	
NAME	DATE

ILLINOIS DEPARTMENT OF TRANSPORTATION  
 1.PSBC MP00.6  
 OIL300.IA.02C

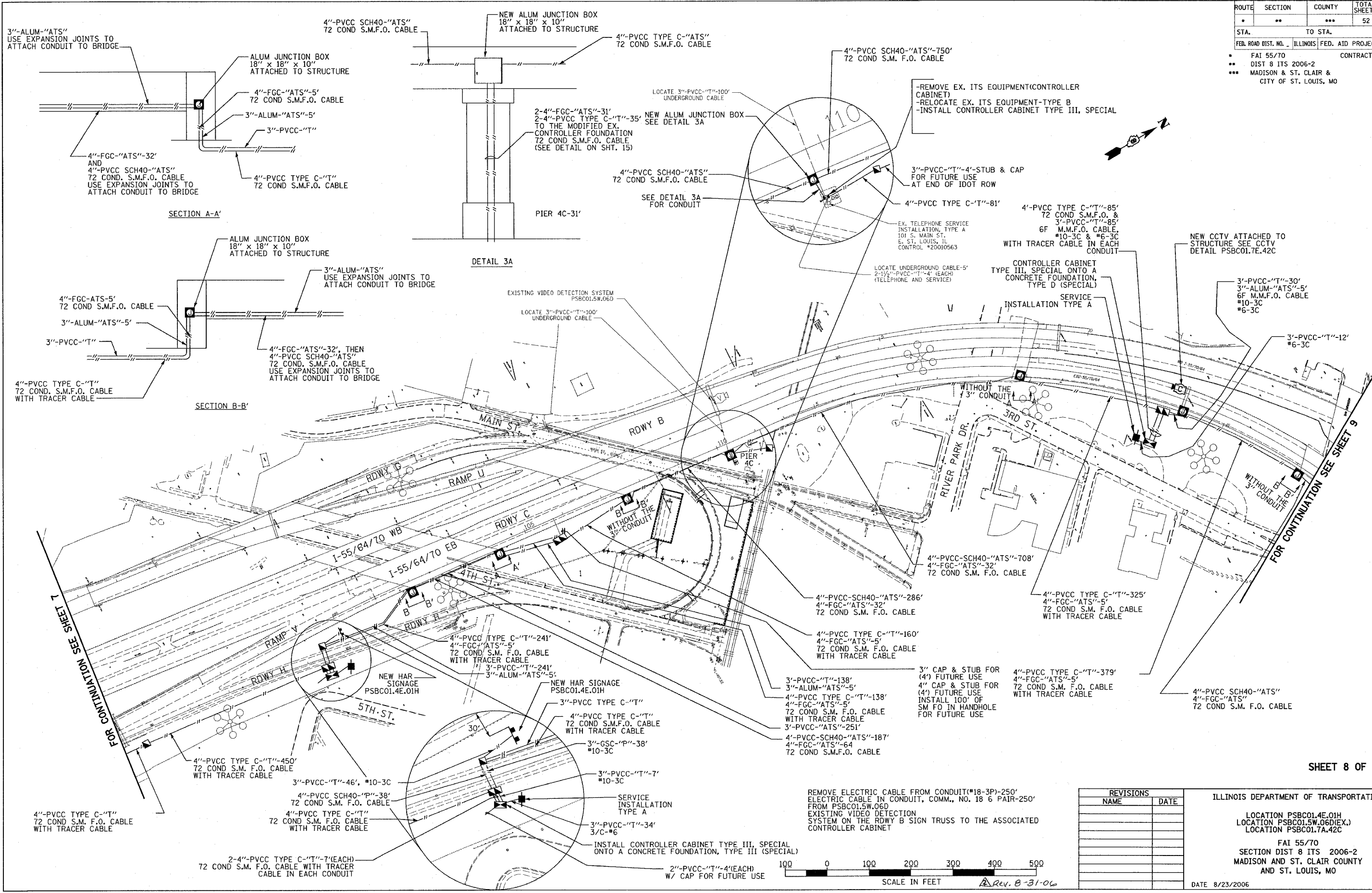
2.PSBC MP00.9  
 PSBC00.9E.09D  
 PSBC00.9E.05D(EX.)  
 PSBC00.9W.04D(EX.)  
 PSBC00.9E.02C(EX.)

FAI 55/70  
 SECTION DIST 8 ITS 2006-2  
 MADISON AND ST. CLAIR COUNTY  
 AND ST. LOUIS, MO  
 DATE 8/23/2006



PLT DATE = 8/23/2006  
 FILE NAME = c:\projects\16855\electrical\16855a.dgn  
 PLOT SCALE = 1/8"=20'-0" / 1"=160'-0"  
 REFERENCE = SHEET #

ROUTE	SECTION	COUNTY	TOTAL SHEETS	SHEET NO.
•	••	•••	52	23
STA. TO STA.		FED. ROAD DIST. NO. ILLINOIS FED. AID PROJECT		
• FAI 55/70		CONTRACT# 76973		
•• DIST 8 ITS 2006-2		MADISON & ST. CLAIR & CITY OF ST. LOUIS, MO		

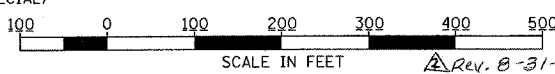


SECTION A-A'

SECTION B-B'

DETAIL 3A

PLOT DATE = 8/23/2006  
 FILE NAME = c:\projects\11695\electrical\11695.dgn  
 PLOT SCALE = 1/8" = 1'-0"  
 REFERENCE = #REF#



REVISIONS	
NAME	DATE

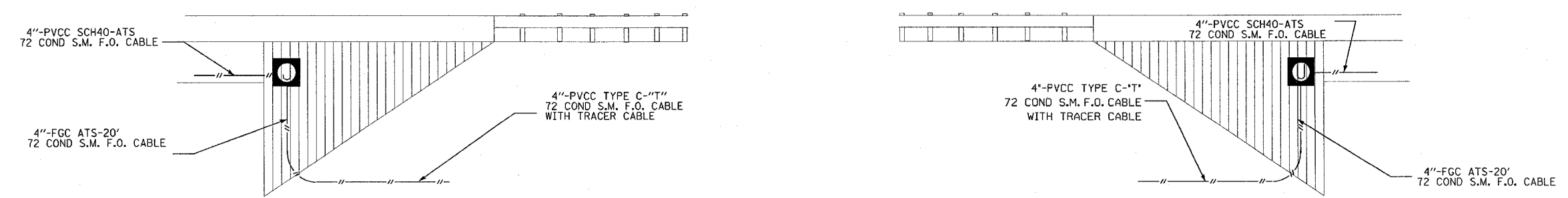
ILLINOIS DEPARTMENT OF TRANSPORTATION

LOCATION PSBC01.4E.01H  
 LOCATION PSBC01.5W.06D(EX.)  
 LOCATION PSBC01.7A.42C

FAI 55/70  
 SECTION DIST 8 ITS 2006-2  
 MADISON AND ST. CLAIR COUNTY  
 AND ST. LOUIS, MO

DATE 8/23/2006

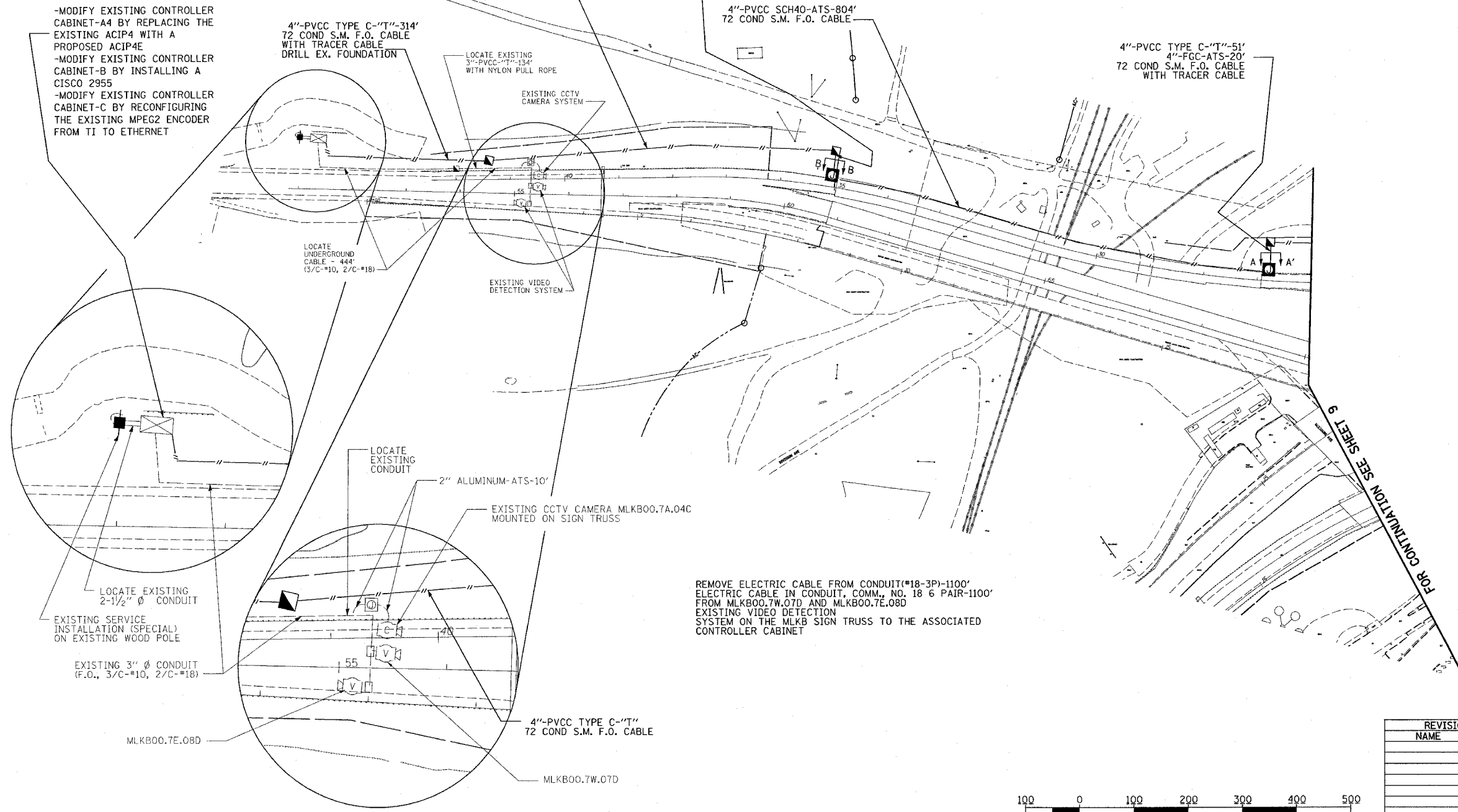
ROUTE	SECTION	COUNTY	TOTAL SHEETS	SHEET NO.
*	**	***	52	25
STA.		TO STA.		
FED. ROAD DIST. NO.	ILLINOIS	FED. AID PROJECT		
FAI 55/70		CONTRACT# 76973		
**	DIST 8 ITS 2006-2			
***	MADISON & ST. CLAIR & CITY OF ST. LOUIS, MO			



SECTION B-B'  
WEST BRIDGE  
ABUTMENT

SECTION A-A'  
EAST BRIDGE  
ABUTMENT

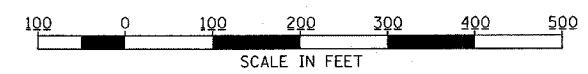
- MODIFY EXISTING CONTROLLER CABINET-A4 BY REPLACING THE EXISTING ACIP4 WITH A PROPOSED ACIP4E
- MODIFY EXISTING CONTROLLER CABINET-B BY INSTALLING A CISCO 2955
- MODIFY EXISTING CONTROLLER CABINET-C BY RECONFIGURING THE EXISTING MPEG2 ENCODER FROM TI TO ETHERNET



REMOVE ELECTRIC CABLE FROM CONDUIT(\*18-3P)-1100' ELECTRIC CABLE IN CONDUIT, COMM. NO. 18 6 PAIR-1100' FROM MLKB00.7W.07D AND MLKB00.7E.08D EXISTING VIDEO DETECTION SYSTEM ON THE MLKB SIGN TRUSS TO THE ASSOCIATED CONTROLLER CABINET

FOR CONTINUATION SEE SHEET 9

PLOT DATE = 8/23/2006  
FILE NAME = c:\projects\mlkb00\electrical\toplin18rba.dgn  
PLOT SCALE = 1/8\"/>



Rev. 8-31-06

REVISIONS	
NAME	DATE

ILLINOIS DEPARTMENT OF TRANSPORTATION  
LOCATION MLKB00.7E.08D(EX.)  
LOCATION MLKB00.7W.07D(EX.)  
LOCATION MLKB00.7A.XXC(EX.)

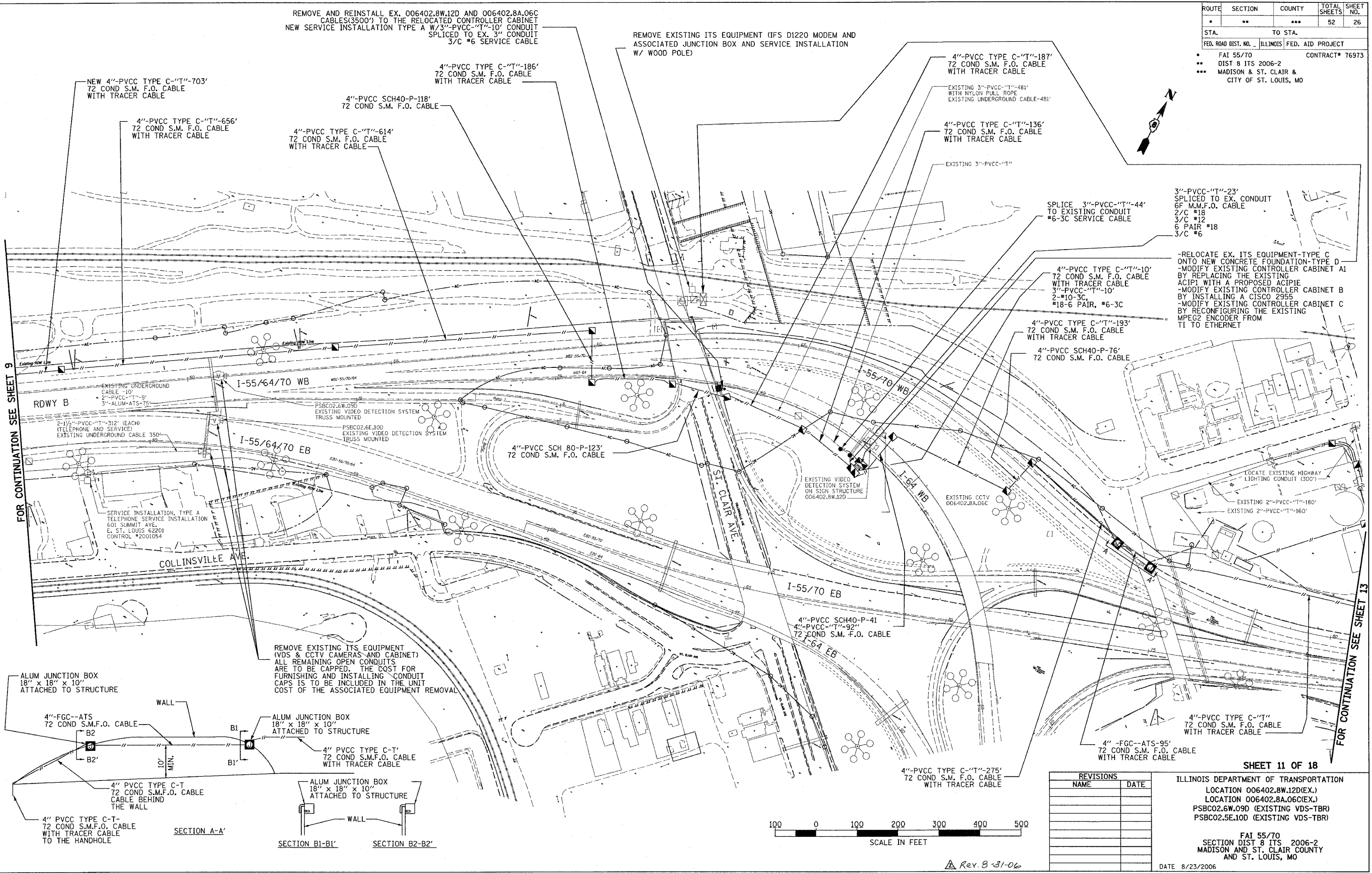
FAI 55/70  
SECTION DIST 8 ITS 2006-2  
MADISON AND ST. CLAIR COUNTY  
AND ST. LOUIS, MO

DATE 8/23/2006

ROUTE	SECTION	COUNTY	TOTAL SHEETS	SHEET NO.
•	••	•••	52	26
STA.	TO STA.			
FED. ROAD DIST. NO.	ILLINOIS	FED. AID PROJECT		
•	FAI 55/70	CONTRACT# 76973		
••	DIST 8 ITS 2006-2			
•••	MADISON & ST. CLAIR & CITY OF ST. LOUIS, MO			

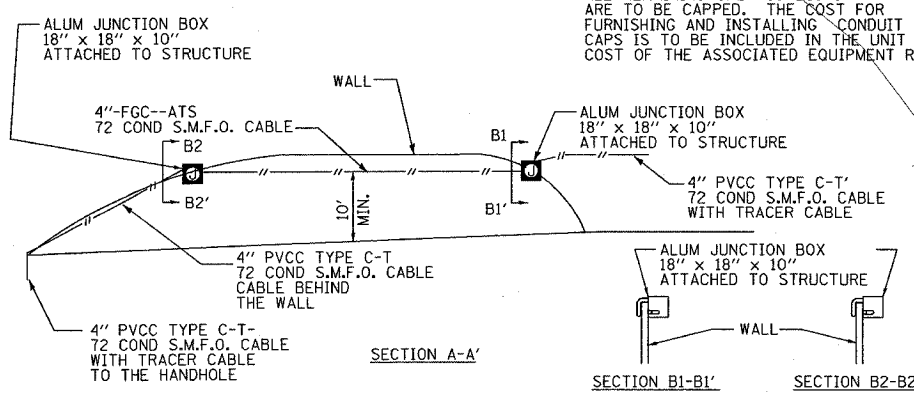
REMOVE AND REINSTALL EX. 006402.8W.12D AND 006402.8A.06C CABLES(3500') TO THE RELOCATED CONTROLLER CABINET NEW SERVICE INSTALLATION TYPE A W/3"-PVCC-"T"-10' CONDUIT SPLICED TO EX. 3" CONDUIT 3/C #6 SERVICE CABLE

REMOVE EXISTING ITS EQUIPMENT (IFS D1220 MODEM AND ASSOCIATED JUNCTION BOX AND SERVICE INSTALLATION W/ WOOD POLE)



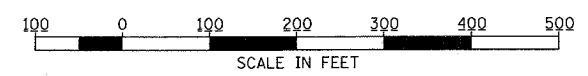
FOR CONTINUATION SEE SHEET 9

FOR CONTINUATION SEE SHEET 13



3"-PVCC-"T"-23' SPLICED TO EX. CONDUIT 6F M.M.F.O. CABLE 2/C #18 3/C #12 6 PAIR #18 3/C #6

-RELOCATE EX. ITS EQUIPMENT-TYPE C ONTO NEW CONCRETE FOUNDATION-TYPE D -MODIFY EXISTING CONTROLLER CABINET A1 BY REPLACING THE EXISTING ACPIE WITH A PROPOSED ACPIE -MODIFY EXISTING CONTROLLER CABINET B BY INSTALLING A CISCO 2955 -MODIFY EXISTING CONTROLLER CABINET C BY RECONFIGURING THE EXISTING MPEG2 ENCODER FROM TI TO ETHERNET



REVISIONS	
NAME	DATE

SHEET 11 OF 18

ILLINOIS DEPARTMENT OF TRANSPORTATION  
 LOCATION 006402.8W.12D(EX.)  
 LOCATION 006402.8A.06C(EX.)  
 PSBC02.6W.09D (EXISTING VDS-TBR)  
 PSBC02.5E.10D (EXISTING VDS-TBR)

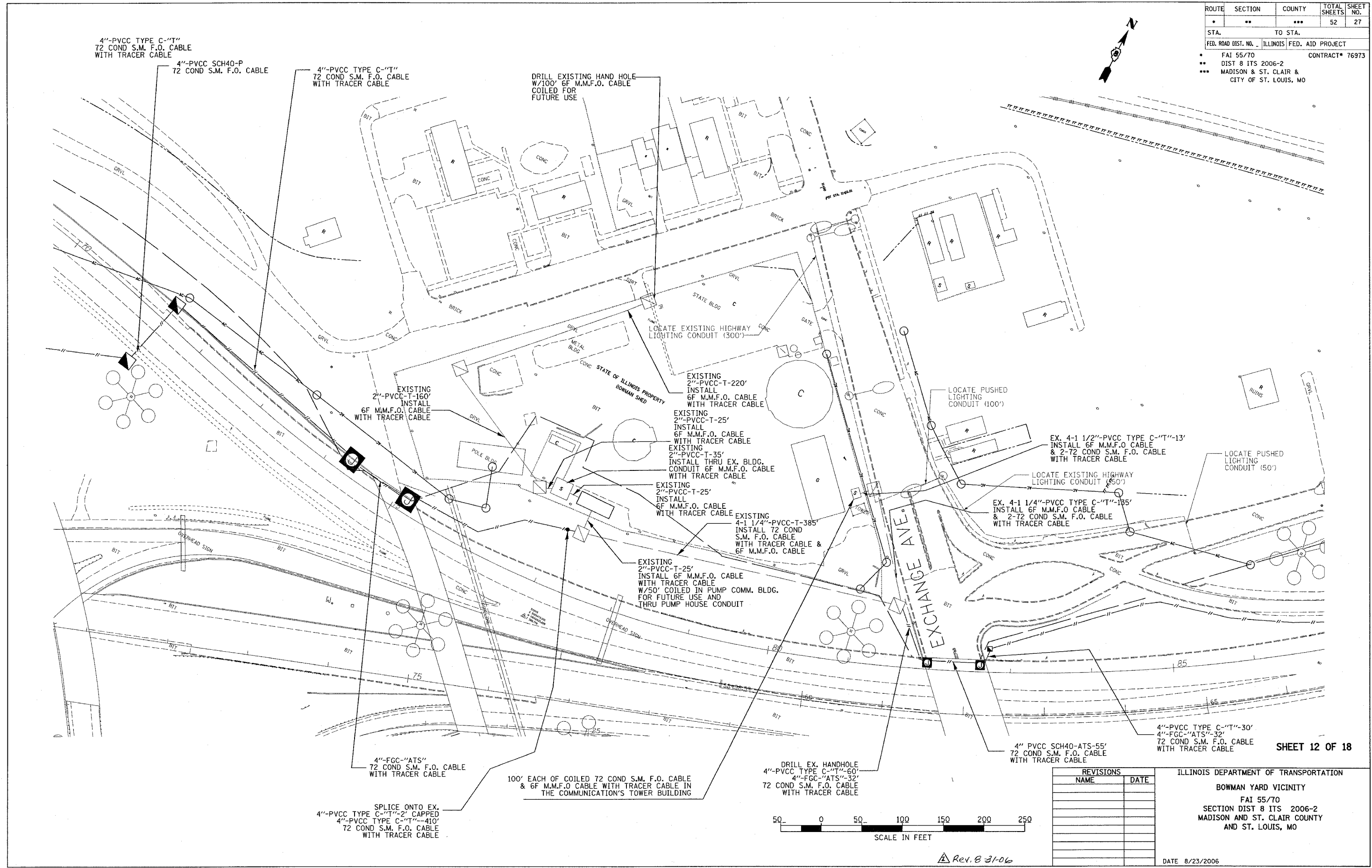
FAI 55/70  
 SECTION DIST 8 ITS 2006-2  
 MADISON AND ST. CLAIR COUNTY  
 AND ST. LOUIS, MO

DATE 8/23/2006

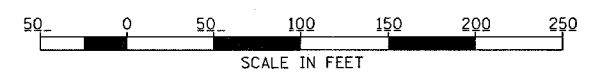
PLOT DATE = 8/23/2006  
 PLOT SCALE = 1"=100'-0"  
 REFERENCE = BREF#

Rev. B-31-06

ROUTE	SECTION	COUNTY	TOTAL SHEETS	SHEET NO.
•	••	•••	52	27
STA.		TO STA.		
FED. ROAD DIST. NO.		ILLINOIS FED. AID PROJECT		
•	FAI 55/70	CONTRACT# 76973		
••	DIST 8 ITS 2006-2			
•••	MADISON & ST. CLAIR & CITY OF ST. LOUIS, MO			



SHEET 12 OF 18



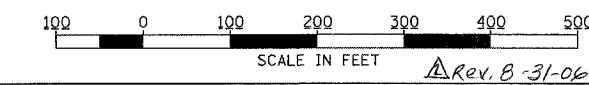
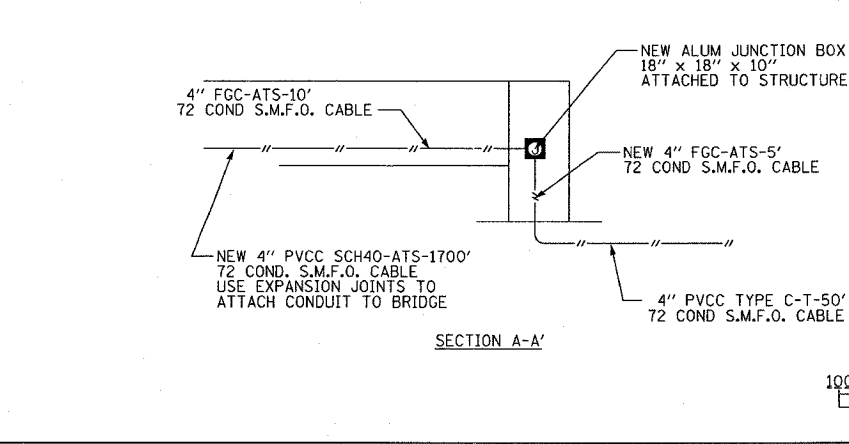
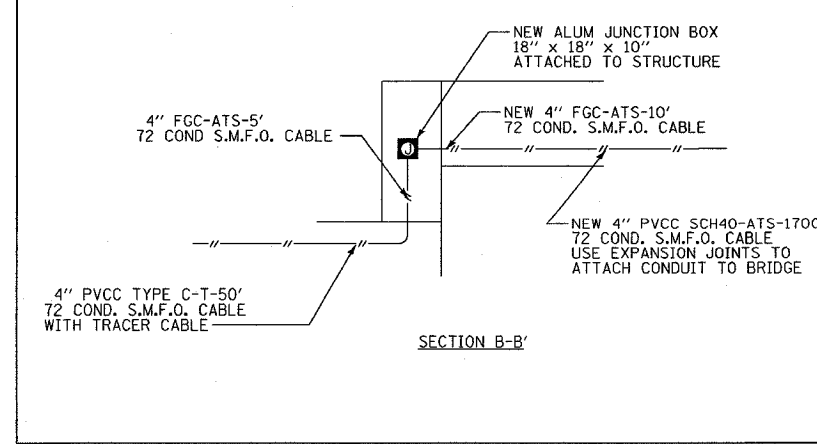
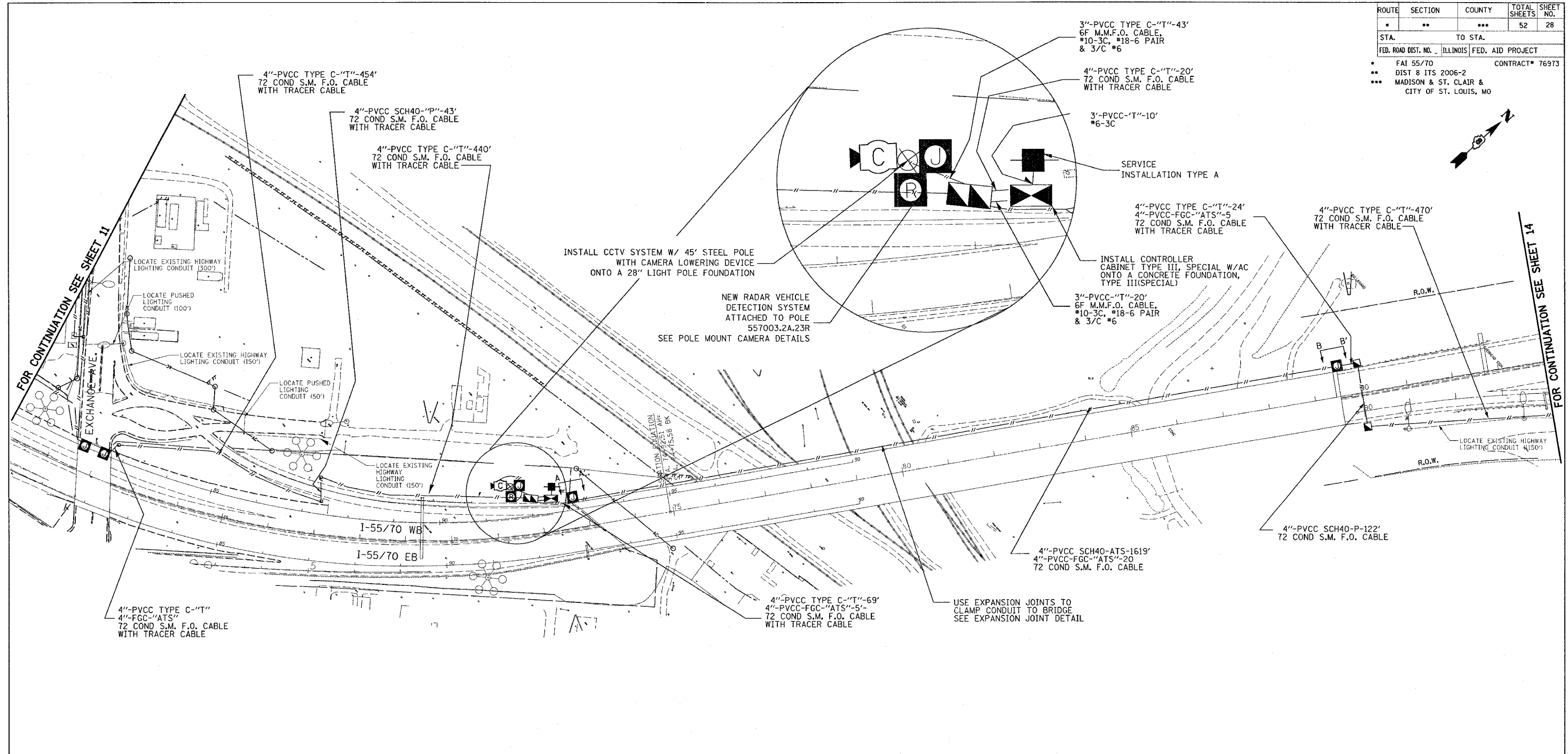
REVISIONS	
NAME	DATE

ILLINOIS DEPARTMENT OF TRANSPORTATION  
 BOWMAN YARD VICINITY  
 FAI 55/70  
 SECTION DIST 8 ITS 2006-2  
 MADISON AND ST. CLAIR COUNTY  
 AND ST. LOUIS, MO  
 DATE 8/23/2006

PLOT DATE = 8/23/2006  
 FILE NAME = c:\projects\electrical\mapin\1675a.dgn  
 PLOT SCALE = 1/8"=1'-0"  
 REFERENCE = 1675a

Rev. B 8-31-06

ROUTE	SECTION	COUNTY	TOTAL SHEETS	SHEET NO.
*	**	***	52	28
STA.		TO STA.		
FED. ROAD DIST. NO. - ILLINOIS FED. AID PROJECT				
* FAI 55/70			CONTRACT # 76973	
** DIST 8 ITS 2006-2				
*** MADISON & ST. CLAIR & CITY OF ST. LOUIS, MO				



REVISIONS	
NAME	DATE

ILLINOIS DEPARTMENT OF TRANSPORTATION  
LOCATION 557003.2A.23R  
LOCATION 557003.2A.41C

FAI 55/70  
SECTION DIST 8 ITS 2006-2  
MADISON AND ST. CLAIR COUNTY  
AND ST. LOUIS, MO

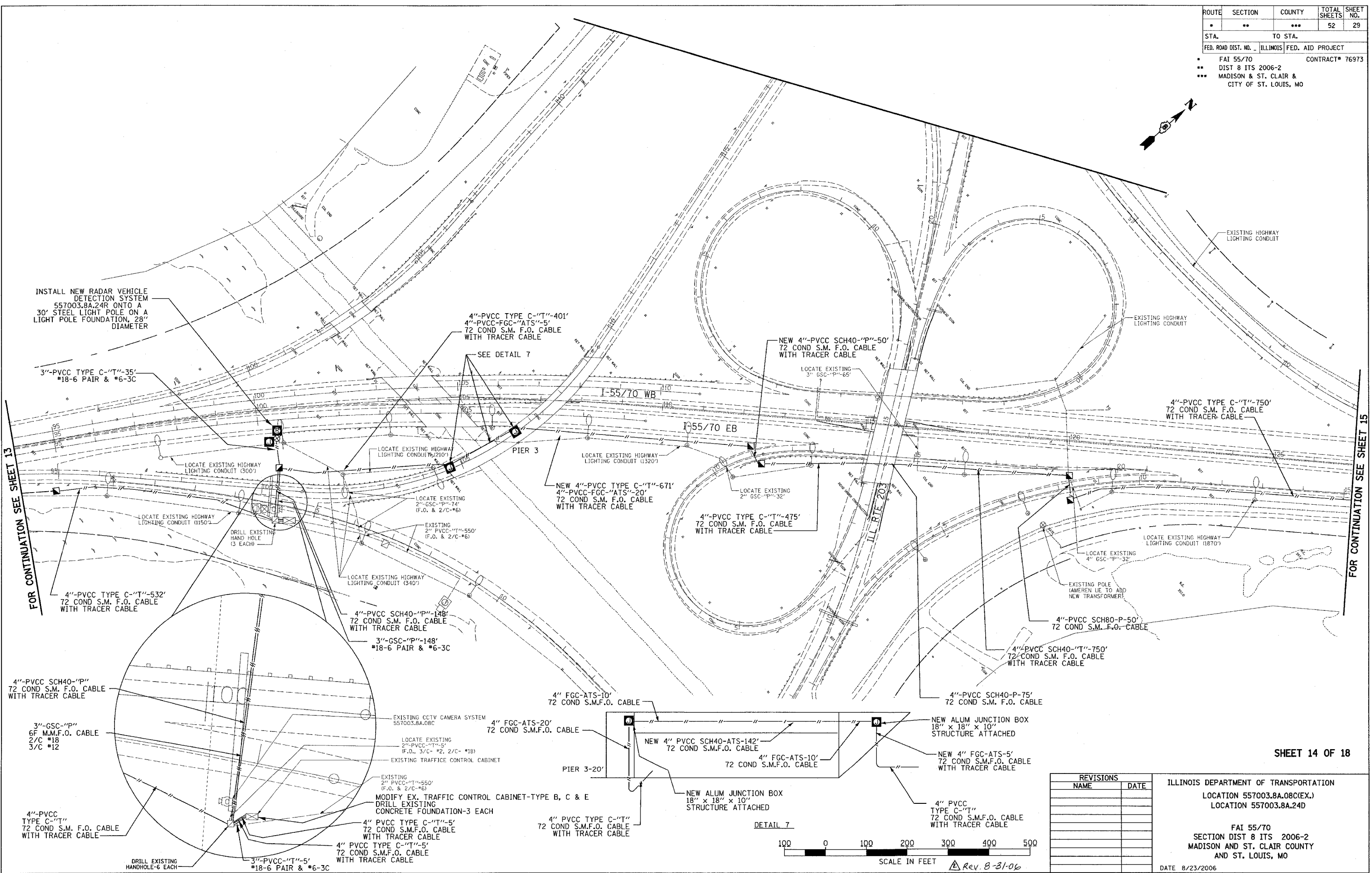
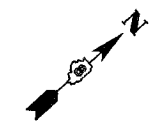
DATE 8/23/2006

PLOT DATE = 8/23/2006  
FILE NAME = c:\projects\1805\electrical\1805.dgn  
PLOT SCALE = 1/8\"/>

Rev. B-31-06



ROUTE	SECTION	COUNTY	TOTAL SHEETS	SHEET NO.
•	••	•••	52	29
STA.	TO STA.			
FED. ROAD DIST. NO.	ILLINOIS FED. AID PROJECT			
•	FAI 55/70 CONTRACT# 76973			
••	DIST 8 ITS 2006-2			
•••	MADISON & ST. CLAIR & CITY OF ST. LOUIS, MO			



FOR CONTINUATION SEE SHEET 13

FOR CONTINUATION SEE SHEET 15

PLOT DATE = 8/23/2006  
 FILE NAME = c:\projects\electrical\top\11686a.dgn  
 PLOT SCALE = 100.0003 : 1 IN.  
 REFERENCE = SHEET

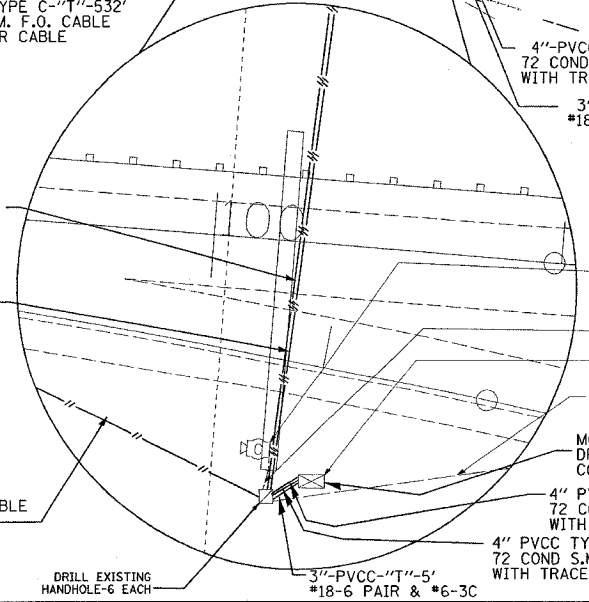
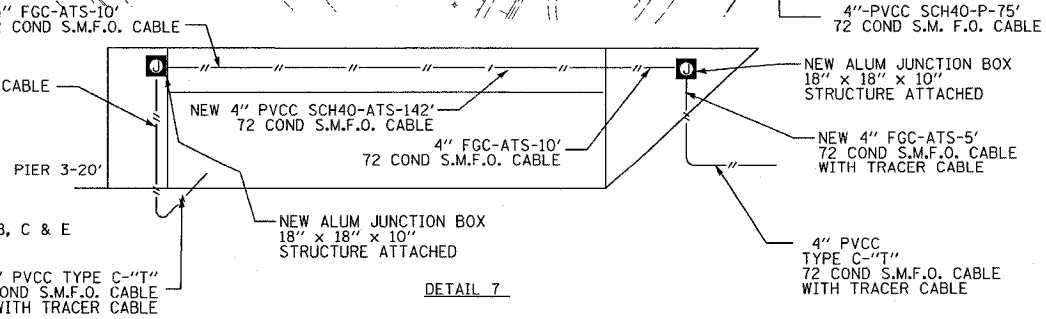
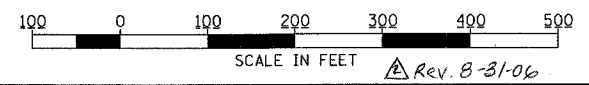
SHEET 14 OF 18

REVISIONS	
NAME	DATE

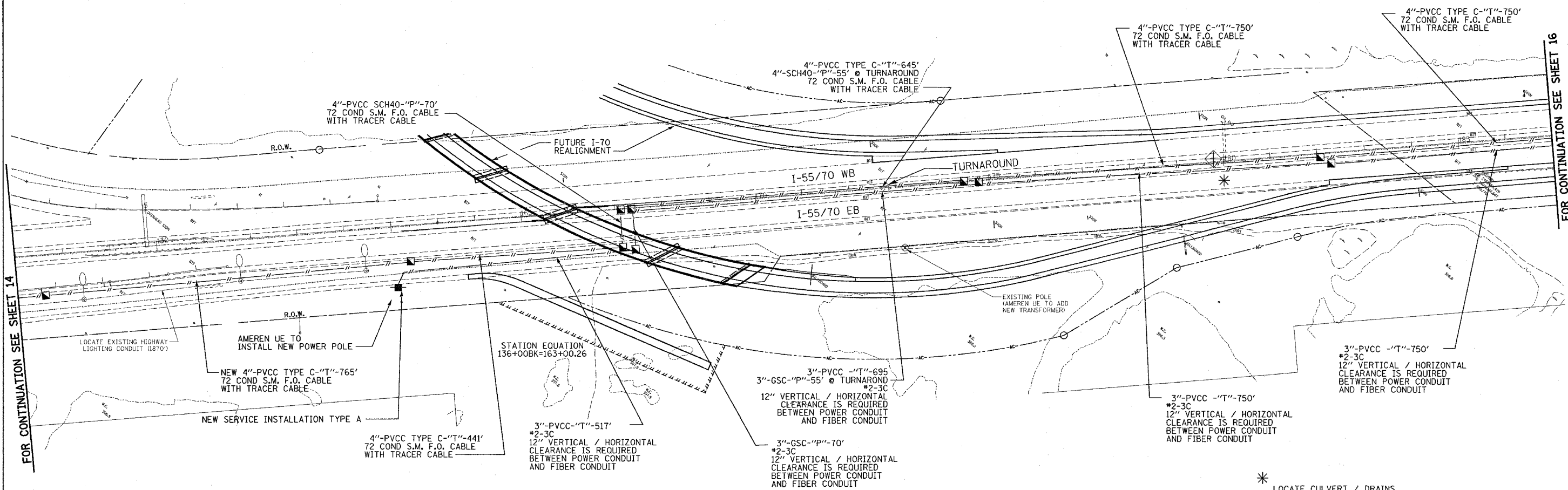
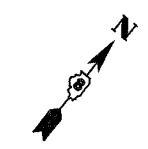
ILLINOIS DEPARTMENT OF TRANSPORTATION  
 LOCATION 557003.8A.08C(EX.)  
 LOCATION 557003.8A.24D

FAI 55/70  
 SECTION DIST 8 ITS 2006-2  
 MADISON AND ST. CLAIR COUNTY  
 AND ST. LOUIS, MO

DATE 8/23/2006



ROUTE	SECTION	COUNTY	TOTAL SHEETS	SHEET NO.
•	••	•••	52	30
STA.		TO STA.		
FED. ROAD DIST. NO.		ILLINOIS	FED. AID PROJECT	
• FAI 55/70		CONTRACT# 76973		
•• DIST 8 ITS 2006-2				
••• MADISON & ST. CLAIR & CITY OF ST. LOUIS, MO				

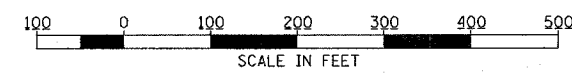


FOR CONTINUATION SEE SHEET 14

FOR CONTINUATION SEE SHEET 16

\* LOCATE CULVERT / DRAINS  
VERIFY DEPTH, TRENCH OVER  
OR TRENCH AROUND PER FIELD  
ENGINEER'S RECOMMENDATION.

PLOT DATE = 8/23/2006  
 FILE NAME = c:\projects\186\electrical\186\186.dgn  
 PLOT SCALE = 1/8" = 100'-0"  
 REFERENCE = #REF#

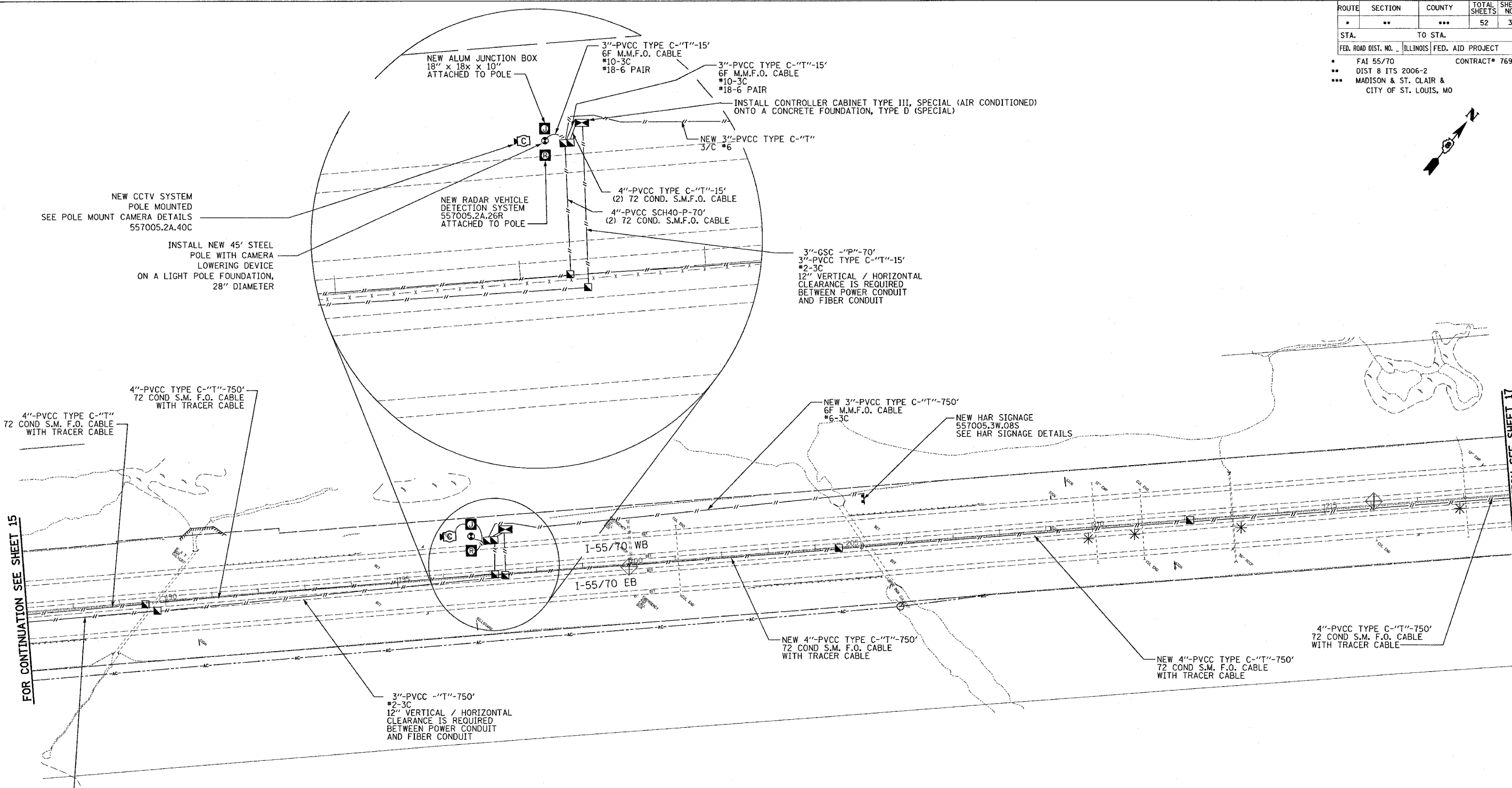
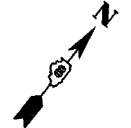


Rev. 8-31-06

REVISIONS	
NAME	DATE

ILLINOIS DEPARTMENT OF TRANSPORTATION  
 LOCATION 557004.5A.25D  
 FAI 55/70  
 SECTION DIST 8 ITS 2006-2  
 MADISON AND ST. CLAIR COUNTY  
 AND ST. LOUIS, MO  
 DATE 8/23/2006

ROUTE	SECTION	COUNTY	TOTAL SHEETS	SHEET NO.
•	••	•••	52	31
STA.		TO STA.		
FED. ROAD DIST. NO.		ILLINOIS FED. AID PROJECT		
• FAI 55/70		CONTRACT# 76973		
•• DIST 8 ITS 2006-2				
••• MADISON & ST. CLAIR & CITY OF ST. LOUIS, MO				



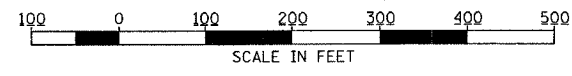
FOR CONTINUATION SEE SHEET 15

FOR CONTINUATION SEE SHEET 17

PLOT DATE = 8/23/2006  
 FILE NAME = c:\projects\electrical\top\11696a.dgn  
 PLOT SCALE = 1/80,000" = 1/8" = REF#  
 REFERENCE = REF#

SHEET 16 OF 18

\* LOCATE CULVERT / DRAINS  
 VERIFY DEPTH, TRENCH OVER  
 OR TRENCH AROUND PER FIELD  
 ENGINEER'S RECOMMENDATION.



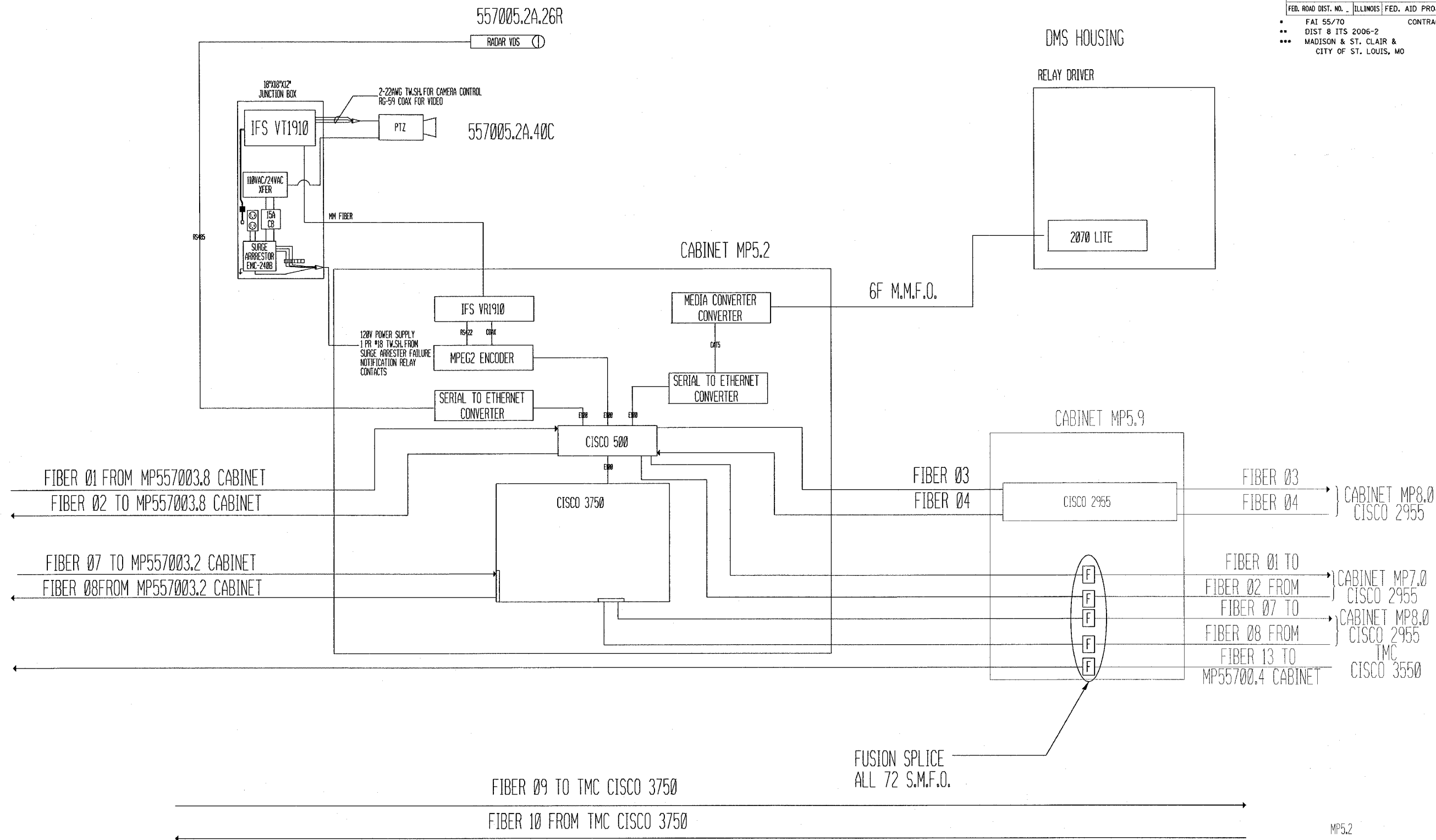
Rev. 8-31-06

REVISIONS	
NAME	DATE

ILLINOIS DEPARTMENT OF TRANSPORTATION  
 LOCATION 557005.2A.26R  
 LOCATION 557005.2A.40C  
 LOCATION 557005.5W.08S  
 FAI 55/70  
 SECTION DIST 8 ITS 2006-2  
 MADISON AND ST. CLAIR COUNTY  
 AND ST. LOUIS, MO

DATE 8/23/2006

ROUTE	SECTION	COUNTY	TOTAL SHEETS	SHEET NO.
*	**	***	52	43
STA.		TO STA.		
FED. ROAD DIST. NO.		ILLINOIS FED. AID PROJECT		
FAI 55/70		CONTRACT# 76973		
DIST 8 ITS 2006-2				
MADISON & ST. CLAIR & CITY OF ST. LOUIS, MO				



PLOT DATE = 8/23/2006  
PLOT SCALE = 1/8"=1'-0"  
REFERENCE = #REF#

REVISIONS	
NAME	DATE

MP5.2  
COMMUNICATION SHEET 9 OF 10

ILLINOIS DEPARTMENT OF TRANSPORTATION  
1.155/70 CABINET MP5.2  
557005.2A.40C  
557005.2W.08S

FAI 55/70  
SECTION DIST 8 ITS 2006-2  
MADISON AND ST. CLAIR COUNTY  
AND ST. LOUIS, MO

SCALE: DATE 8/23/2006  
DRAWN BY MAM  
CHECKED BY CAF

Rev. 8-31-06