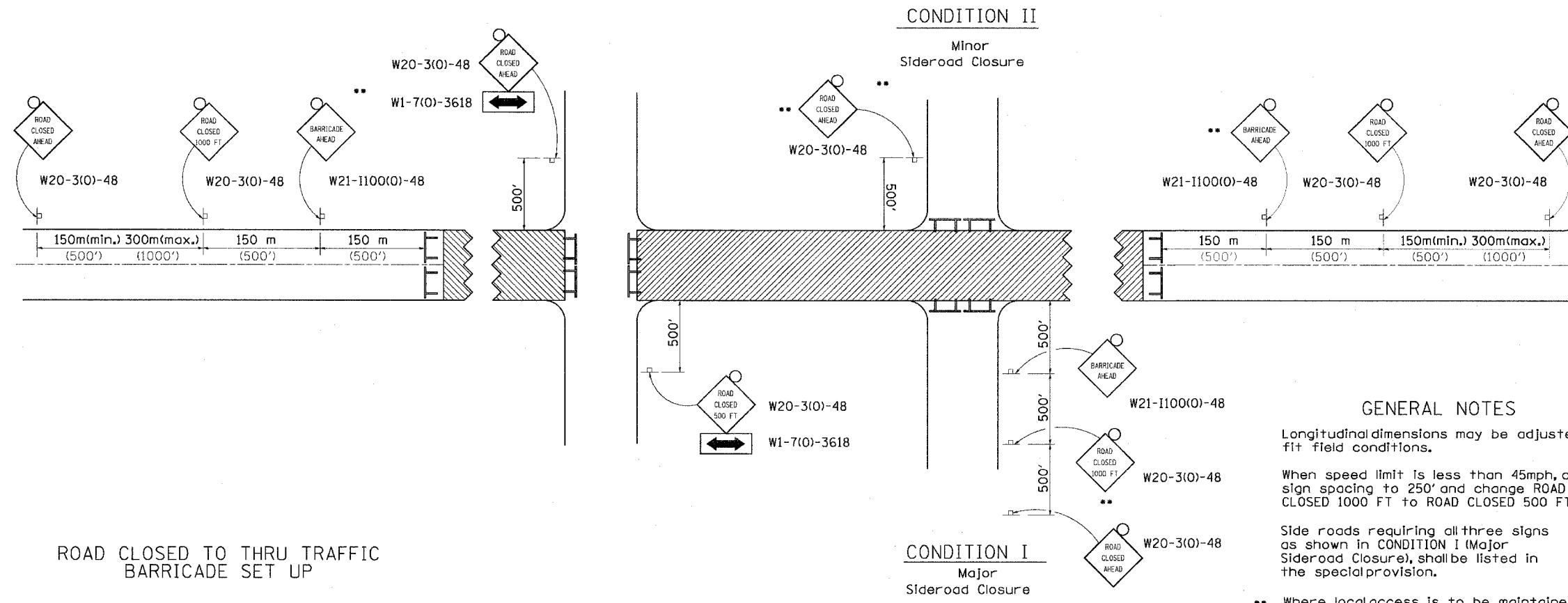
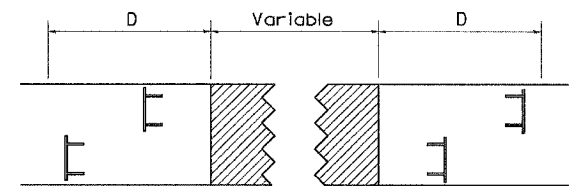


TRAFFIC CONTROL FOR ROAD CLOSURE

CONTRACT NO.			
F.A. RTE.	SECTION	COUNTY	TOTAL SHEET NO.
STA.	TO STA.		
FED. ROAD DIST. NO.	ILLINOIS FED. AID PROJECT		



ROAD CLOSED TO THRU TRAFFIC BARRICADE SET UP



Type III Barricades and R11-4-4830 signs shall be as shown in "Road Closed To All Thru Traffic" detail on Highway Standard 702001. If the distance "D" exceeds 600 m (2000') an additional set of barricades and R11-4-4830 shall be placed at each end of the work area.

- SYMBOLS**
- Work area
 - Type III Barricade with Flashers
 - Sign with flashing light

- GENERAL NOTES**
- Longitudinal dimensions may be adjusted to fit field conditions.
 - When speed limit is less than 45mph, change sign spacing to 250' and change ROAD CLOSED 1000 FT to ROAD CLOSED 500 FT.
 - Side roads requiring all three signs as shown in CONDITION I (Major Sideroad Closure), shall be listed in the special provision.
 - Where local access is to be maintained, barricades are to be set up as shown in Road Closed to thru traffic.
 - Type III Barricades and R11-2-4830 signs shall be as shown in "Road Closed To All Traffic" detail on Highway Standard 702001.

All dimensions are in millimeters (inches) unless otherwise shown.

TYPICAL APPLICATION FOR ROAD CLOSURE

TRAFFIC CONTROL FOR ROAD CLOSURE 40.1

REVISED 10-20-04

REVISIONS	DESCRIPTION	DATE
No.		

Missman
STANLEY & ASSOCIATES, P.C.
Civil Engineering - Environmental Services - GIS - Landscape Architecture - Surveying
1011 27th Avenue
Rock Island, Illinois 61201-6040
Phone (309) 788-7644
Fax (309) 788-7644

85th Ave. West
ROCK ISLAND, ILLINOIS
DISTRICT STANDARDS

Missman Project No: A04T023
File Name: 2037A_STD1.dwg
© COPYRIGHT 2003 ALL RIGHTS RESERVED
Drawn By: WEF
Checked By: DRM
Date: MAY, 2006

C:\RA\2004\A04T023\A04T023.dwg, WEST, (wef) 2/17/06, 6/16/2006 8:59:53 AM

PLOT DATE: Wed, Dec 13, 2006 9:28:04 AM
FILE NAME: C:\Users\wef\My Documents\A04T023\A04T023.dwg
REFERENCE: MISSMAN