

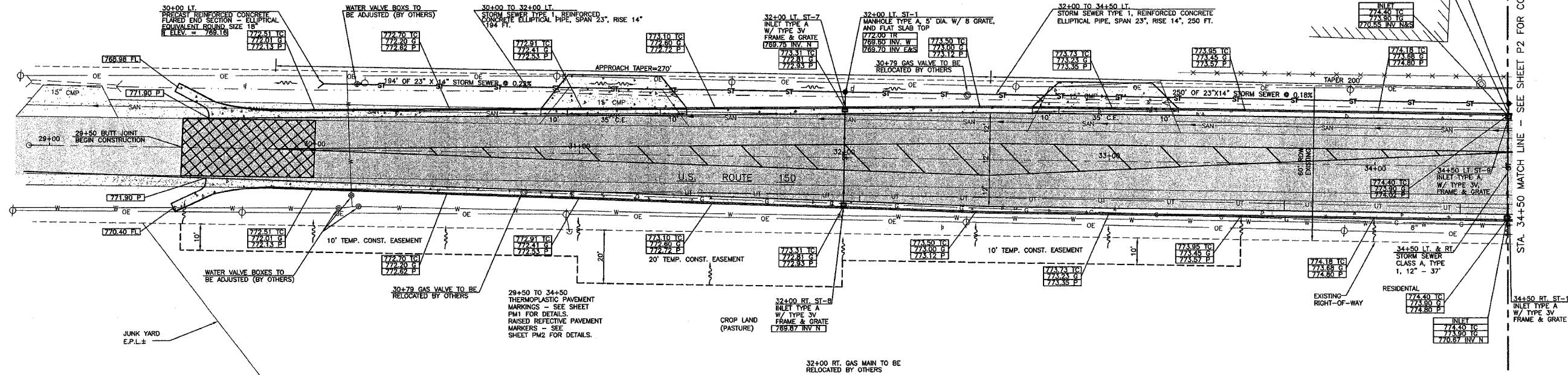
29+50 - 30+00 BITUMINOUS SURFACE REMOVAL - BUTT JOINT - 122.2 S.Y.
 29+80 - 32+50 LT. & RT. PCC BASE COURSE WIDENING (9") - 210 S.Y.
 29+50 LT. & RT. CLASS S1 CONCRETE OUTLETS - 6.90 C.Y.
 32+50 - 34+50 PCC BASE COURSE - 311 S.Y.

29+75 - 34+50 BITUMINOUS SURFACE REMOVAL - (CM) - 1161 S.Y.
 29+86 - 34+50 LT. & RT. COMBINATION CONCRETE CURB & GUTTER TY. B6.24 - 928 FT.
 29+50 - 29+58 TEMPORARY RAMP 20.4 S.Y.
 31+14 LT. PIPE CULVERT REMOVAL - 46 FT. TRENCH BACKFILL - 12.2 C.Y. PORTLAND CEMENT CONCRETE DRIVEWAY PAVEMENT (8") - 57.8 S.Y.
 30+00 LT. PRECAST REINFORCED CONCRETE FLARED END SECTION, ELLIPTICAL EQUIV. ROUND SIZE 18" - 1 EA.

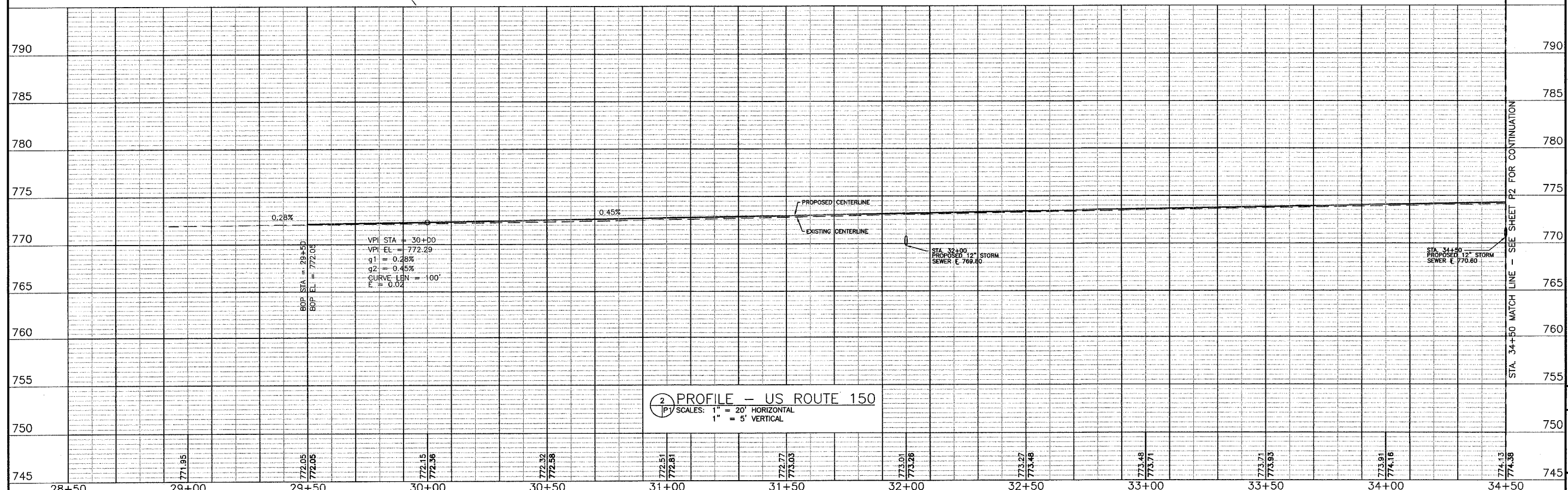
32+00 STORM SEWER CLASS A, TY. 1, 12" 37 FT. (INLET TO INLET) TRENCH BACKFILL - 11.5 C.Y.
 32+00 LT. STORM SEWER, CLASS A, TY. 1, 12" 4' (MH TO INLET)
 32+00 CLASS C PATCH TYPE 1, 12" - 8.56 S.Y.
 ADJUSTING WATER SERVICE 3053 GRAND AVE. (U.S. 150) - 30 FT. 3075 GRAND AVE. (U.S. 150) - 30 FT.

32+98 LT. PIPE CULVERT REMOVAL - 50 FT. TRENCH BACKFILL - 13.6 TON PORTLAND CEMENT CONCRETE DRIVEWAY PAVEMENT (8") - 47.2 S.Y.
 34+50 CLASS C PATCH TYPE 1, 12" - 8.56 S.Y. TRENCH BACKFILL - 15.5 C.Y.

LEGEND
 [Pattern] EXISTING BITUMINOUS SURFACE
 [Pattern] BITUMINOUS SURFACE REMOVAL BUTT JOINT
 [Pattern] PROPOSED BITUMINOUS SURFACE
 [Pattern] PROPOSED CONCRETE SURFACE



1 PLAN - US ROUTE 150
 P1 SCALE: 1" = 20'



2 PROFILE - US ROUTE 150
 P1 SCALES: 1" = 20' HORIZONTAL
 1" = 5' VERTICAL

BRUNER, COOPER & ZUCK, Inc.
 Consulting Engineers
 Structural Engineers
 Land Surveyors
 188 East Simmons Street
 Peoria, Illinois 61602-1519
 Phone: (309) 343-1926
 Fax: (309) 343-3202
 E-Mail: bruce@brucezuck.com

REVISIONS: 03/06/2006 JWH
 DRAWN: JWH
 CHECKED: KJC
 APPROVED: KJC
 FILE NAME: 240215/P1

PLAN & PROFILE - US ROUTE 150
 PLANS FOR PROPOSED
 INTERSECTION CONSTRUCTION
 US ROUTE 150, LOGISTICS PARKWAY & KNOX COUNTY HWY. 32
 GALESBURG, ILLINOIS

JOB NO. 240215
 SHEET NO. 7
 P1
 02/22/2005