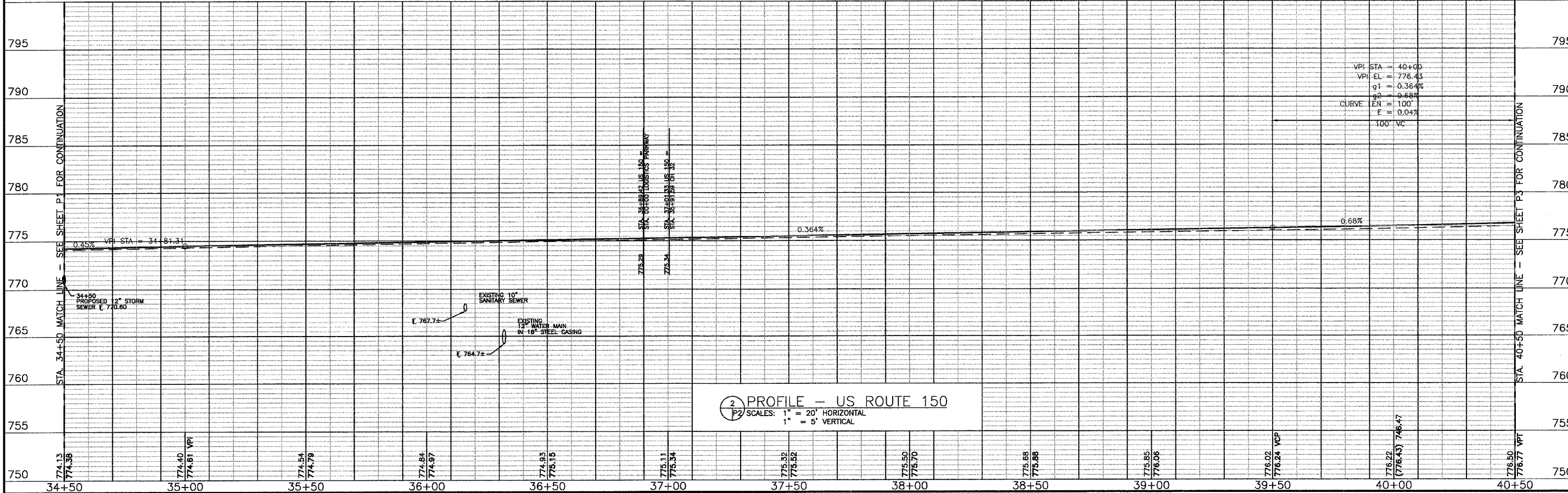


1 PLAN - US ROUTE 150
 P2 SCALE: 1" = 20'



BRUNER, COOPER & ZUCK, INC.
 Consulting Engineers
 Structural Engineers
 Land Surveyors
 188 East Simons Street
 Peoria, IL 61602-1519
 Phone: (309) 343-3002
 Fax: (309) 343-3032
 E-Mail: brucer@brucer.com

US ROUTE 150, LOGISTICS PARKWAY & KNOX COUNTY HWY. 32
 GALESBURG, ILLINOIS

PLAN & PROFILE - US ROUTE 150
 PLANS FOR PROPOSED
 INTERSECTION CONSTRUCTION

JOB NO. 240215
SHEET NO. 8
P2

REVISIONS

02/01/2005	JWH	02/01/2005	JWH
03/06/2006	KJC	03/06/2006	JWH
04/03/2006	KJC	04/03/2006	JWH

DRAWN: JWH
CHECKED: KJC
APPROVED: KJC
APPROVED: KJC

FILE NAME: 240215/P2

02/22/2005