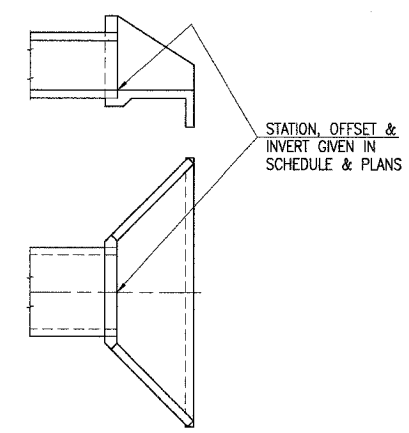


FAU. RITE.	SECTION	COUNTY	TOTAL SHEETS	SHEET NO.
B075	03-00167-04-FP	SANGAMON	109	12
STA.		TO STA.		
FED. ROAD DIST. NO.	ILLINOIS	FED. AID PROJECT		

PIPE CULVERT SCHEDULE

ROADWAY	C STATION	REFERENCE STATION*	REF. OFFSET* (RT ANGLE TO C AT REF STATION)	REFERENCE INVERT*	8'x4' PRECAST BOX (M273) FOOT	10'x3' PRECAST BOX (M273) FOOT	13'x3' ALUMINUM BOX CULV. FOOT	24" RCCP TY 1 FOOT	30" RCCP TY 1 FOOT	EQ RND 24" RCCP TY 1 FOOT	15" CSCP TY 1 FOOT	18" CSCP TY 1 FOOT	P.R.C. FLARED END SECTIONS			STEEL END SECTIONS		BOX CULVERT END SECTIONS			C.L.S.M. CU YD			
													24" EACH	30" EACH	EQ RND 24" EACH	15" EACH	18" EACH	SPECIAL EACH	CULVERT NO. 1 EACH	CULVERT NO. 2 EACH		ALUMINUM HEADWALL EACH		
CARDINAL HILL	468+05.77	467+45.25 LT 468+62.90 RT	61.48' LT 56.29' RT	564.30' LT 563.39' RT	161														1	1		1	121.2	
CARDINAL HILL	468+22.47, RT	468+18.49 RT 468+54.89 RT	64.92' RT 64.72' RT	563.63' RT 563.40' RT			36**															1	-	
CARDINAL HILL	468+83.11	468+65.33 RT 469+00.00 LT	52.12' RT 50.46' LT	563.40' RT 563.59' LT					103						1									76.3
CARDINAL HILL	481+51.21, LT	481+29.90 LT 482+00.30 LT	51.90' LT 60.15' LT	564.45' LT 562.40' LT								66												-
CARDINAL HILL	495+62.00, LT	495+35.80 LT 495+87.65 LT	39.00' LT 38.90' LT	571.90' LT 572.05' LT								47												-
CARDINAL HILL	495+62.00, RT	495+34.45 RT 495+88.00 RT	39.10' RT 39.00' RT	571.10' RT 571.50' RT								48												-
CARDINAL HILL	511+20.00, LT	510+91.10 LT 511+51.70 LT	42.15' LT 45.05' LT	575.90' LT 575.20' LT							56						2							-
CARDINAL HILL	511+20.00, RT	510+85.10 RT 511+56.40 RT	50.00' RT 50.50' RT	573.40' RT 573.00' RT								66												-
CARDINAL HILL	512+30.00	512+30.00 LT 512+30.00 RT	31.00' LT 30.50' RT	572.44' LT 572.56' RT		62															2			9.4
CARDINAL HILL	517+49.00, LT	517+15.90 LT 517+81.30 LT	48.65' LT 46.40' LT	573.85' LT 574.05' LT													2							-
CARDINAL HILL	517+49.00, RT	517+10.70 RT 517+86.10 RT	47.60' RT 47.10' RT	574.35' RT 574.60' RT								72												-
CARDINAL HILL	522+70.00, LT	522+38.30 LT 523+01.00 LT	43.55' LT 42.55' LT	575.45' LT 575.65' LT													2							-
CARDINAL HILL	524+17.78, LT	524+02.60 LT 524+66.95 LT	42.05' LT 41.60' LT	575.55' LT 575.45' LT													2							-
OAK HILL	183+43.70, LT	183+25.50 LT 183+62.90 LT	28.80' LT 30.20' LT	573.15' LT 572.90' LT								33					2							-
OAK HILL	184+80.00	184+80.00 LT 184+80.00 RT	42.71' LT 31.61' RT	572.11' LT 572.39' RT				62																12.8
OAK HILL	188+63.50, RT	188+38.80 RT 188+89.20 RT	36.25' RT 36.75' RT	574.30' RT 574.05' RT													2							-
OAK HILL	195+90.00, LT	195+65.50 LT 196+17.10 LT	33.00' LT 33.00' LT	567.60' LT 567.00' LT								46												-
WALNUT ST	304+60.00	304+60.00 LT 304+60.00 RT	30.96' LT 32.05' RT	570.79' LT 570.51' RT				51																10.3
BUCKHART RD	9+40.10	9+40.10 LT 9+40.10 RT	74.56' LT 62.58' RT	574.91' LT 575.10' RT						133							2							22.9
BUCKHART RD	10+60.50	10+60.50 LT 10+60.50 RT	78.09' LT 67.40' RT	575.19' LT 575.40' RT						134							2							17.2
<b>TOTALS</b>					161	62	36	113	103	267	310	345	4	1	4	12	12	1	1	2	1			270.1

C.I.P. = CAST-IN-PLACE      \*\*MATERIAL FURNISHED BY THE COUNTY      \*REFERENCE STATION, OFFSET, & INVERTS ARE SHOWN IN DETAIL ON THIS SHEET  
 C.L.S.M. = CONTROLLED LOW-STRENGTH MATERIAL



BOX CULVERT END SECTION OFFSETS

DRAINAGE SCHEDULE  
 SEC. 03-00167-04-FP  
 CARDINAL HILL ROAD (C.H. 37)  
 SANGAMON COUNTY

SHEET 1 OF 3

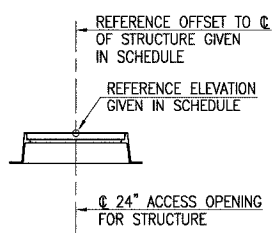


Hanson Professional Services Inc.  
 1525 South Sixth Street, Springfield, IL 62703  
 Registration No. 164-001084  
 © Copyright Hanson Professional Services Inc. 2005

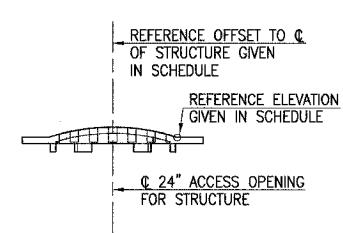
JOB NO. 03S2035B

DATE 6/21/06

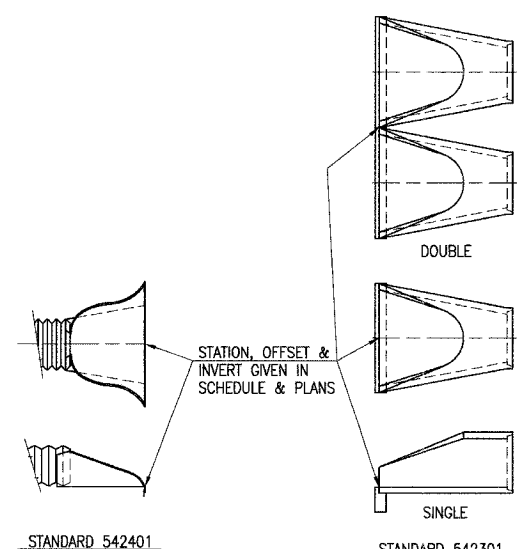
LAYOUT BAR 3/15/04  
 DRAWN BAR 7/22/04  
 REVIEWED LOK 7/27/04  
 I:\03\0065\03S2035B\CIVIL\DRN\DWG-JUL-21-2006 9:39AM BJB



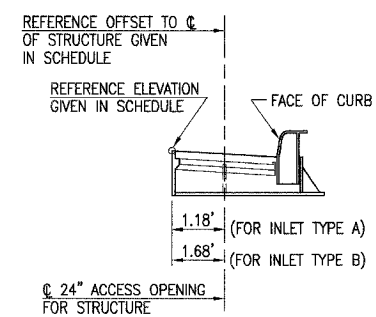
TYPE 1 FRAME & LID



TYPE 8 GRATE



END SECTIONS



TYPE 3 FRAME & GRATE