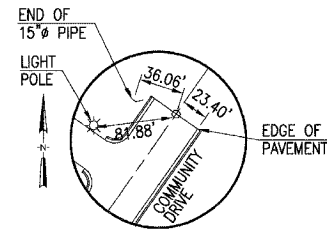
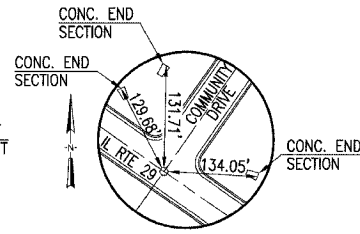


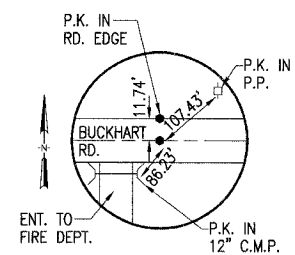
| F.A.U. RITE | SECTION | COUNTY | TOTAL SHEETS | SHEET NO. |
|---------------------|----------------|------------------|--------------|-----------|
| 8075 | 03-00167-04-FP | SANGAMON | 109 | 16 |
| STA. | | TO STA. | | |
| FED. ROAD DIST. NO. | ILLINOIS | FED. AID PROJECT | | |



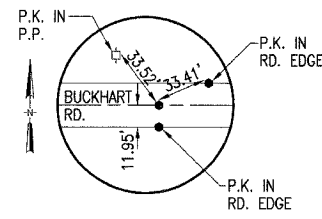
CONTROL POINT 150
P.O.T. STA 504+69.22
FND. P.K. NAIL



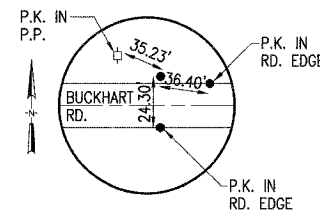
CENTERLINE POINT 205
P.O.T. STA 500+00.00
FND. P.K. NAIL



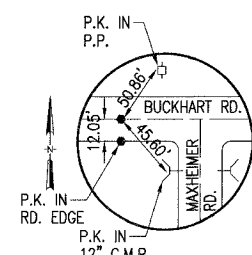
CENTERLINE POINT 1003
P.O.T. STA 527+43.56 CARDINAL HILL RD=
P.O.T. STA 10+00.00 BUCKHART ROAD
SET P.K. & WASHER



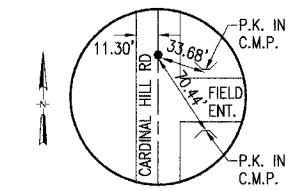
CENTERLINE POINT 1027
P.C. STA 11+20.57
SET P.K. & WASHER



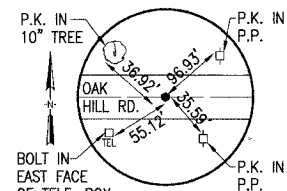
CENTERLINE POINT 1028
P.I. STA 16+36.88
SET 5/8" I.P.



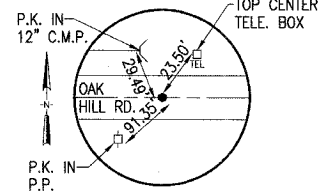
CENTERLINE POINT 1029
P.T. STA 21+52.41
SET P.K. & WASHER



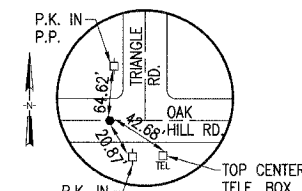
CENTERLINE POINT 1052
P.I. STA 455+50.00
SET P.K. & WASHER



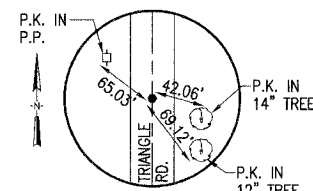
CENTERLINE POINT 1057
P.I. STA 188+00.00
SET P.K. & WASHER



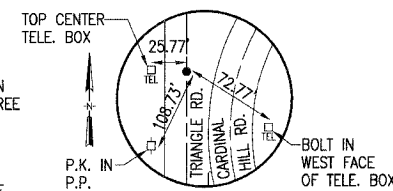
CENTERLINE POINT 1058
P.I. STA 183+85.00
SET P.K. & WASHER



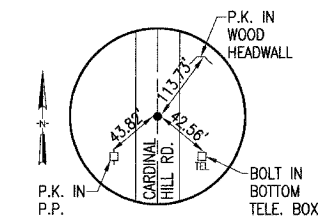
CENTERLINE POINT 1060
P.I. STA 300+00.00 WALNUT STREET=
STA 185+35.00 OAK HILL ROAD
SET PK & WASHER



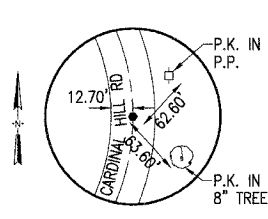
CENTERLINE POINT 1061
P.C. STA 305+40.94
SET PK & WASHER



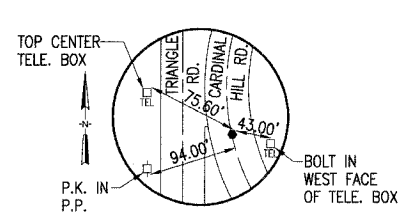
CENTERLINE POINT 1062
P.I. STA 307+08.02
SET PK & WASHER



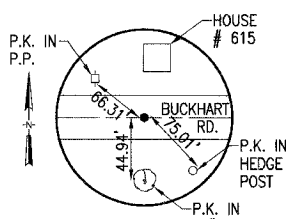
CENTERLINE POINT 1064
P.I. STA 311+00.00
SET P.K. & WASHER



CENTERLINE POINT 1065
P.C. STA 235+75.00
SET P.K. & WASHER



CENTERLINE POINT 1070
P.T. STA 255+00.00
SET P.K. & WASHER



CENTERLINE POINT 1071
P.O.T. STA 1+50.00
SET P.K. & WASHER

| CENTERLINE POINTS SET BUT NOT REFERENCED | | |
|--|---|------------------------------|
| POINT NO. | STATION | DESCRIPTION |
| 1000 | P.C. STA. 517+37.86 | SET 5/8" I.P. 18" DEEP |
| 1001 | P.I. STA. 521+64.00 | SET 5/8" I.P. 18" DEEP |
| 1002 | P.T. STA. 525+59.93 | SET 5/8" I.P. 18" DEEP |
| 1053 | P.C. STA. 457+59.97 | SET P.K. & WASHER |
| 1054 | P.I. STA. 477+23.91 | SET 5/8" I.P. 18" DEEP |
| 1055 | P.T. STA. 495+47.28 | SET 5/8" I.P. 18" DEEP |
| 1056 | P.I. STA. 200+00.00 OAK HILL RD= STA. 468+28.53 CARDINAL HILL RD | SET 5/8" I.P. W/CAP 18" DEEP |
| 1059 | P.I. STA. 182+00.00 | SET P.K. & WASHER |
| 1063 | P.T. STA. 308+75.06 | SET P.K. & WASHER |
| 1066 | P.I. STA. 239+64.57 | SET 5/8" I.P. W/CAP 18" DEEP |
| 1067 | P.T. STA. 243+18.90 | SET P.K. & WASHER |
| 1068 | P.C. STA. 247+52.48 | SET P.K. & WASHER |
| 1069 | P.I. STA. 251+44.28 | SET 5/8" I.P. W/CAP 18" DEEP |
| 1074 | P.O.T. STA. 541+00.00 | SET 5/8" I.P. 18" DEEP |

CENTERLINE CROSS TIES
SEC. 03-00167-04-FP
CARDINAL HILL ROAD (C.H. 37)
SANGAMON COUNTY



JOB NO.
03S2035B
DATE
6/21/06

LAYOUT BUB 3/15/04
DRAWN BUB 7/22/04
REVIEWED LDK 7/21/04
I:\03\0085\03S2035B\CIVIL\SH\LET\C-102GEO.DWG JUL 21, 2006 9:41AM BJB