

Xrefs:  
 C-PP001  
 C-RP  
 C-TP  
 PLAN-E  
 GRID-E  
 C-ROW

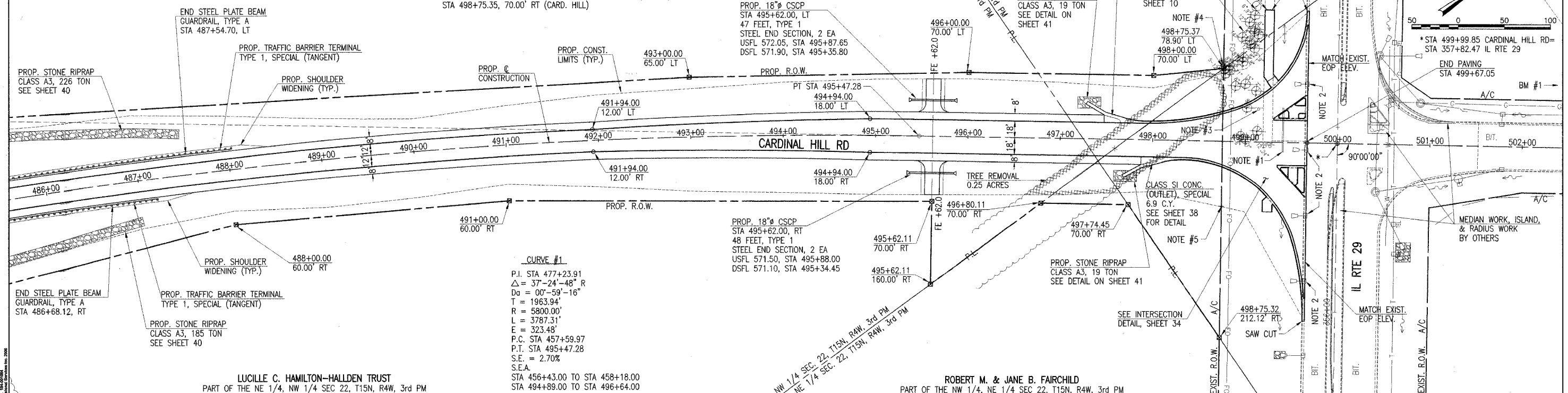
LUCILLE C. HAMILTON-HALDEN TRUST  
 PART OF THE NE 1/4, NW 1/4 SEC 22, T15N, R4W, 3rd PM

NOTES:

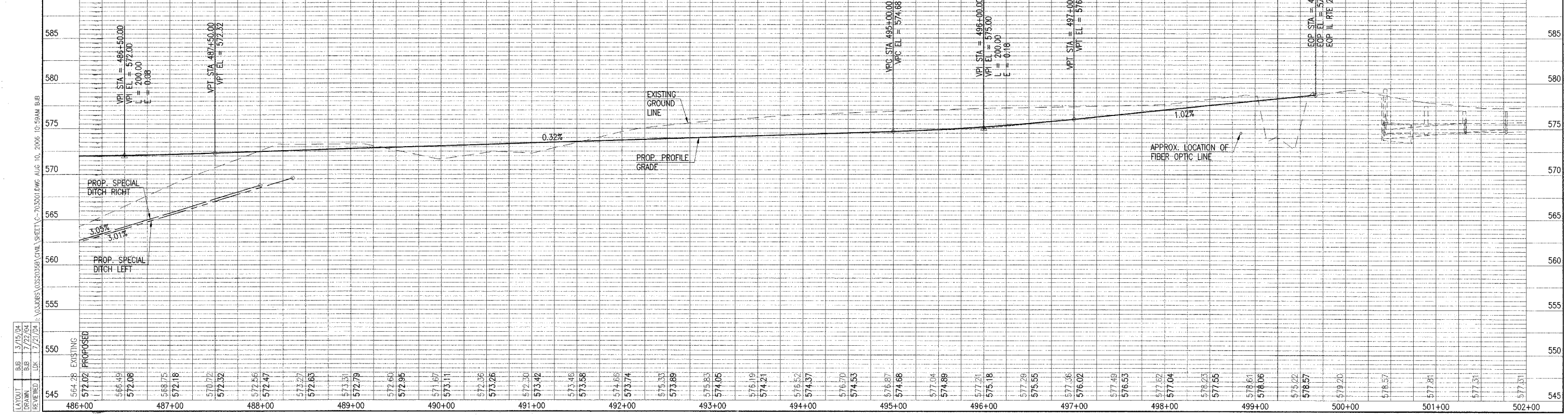
- EXIST. 15" PIPE CULVERT TO BE REMOVED - 35 FEET
- INLETS & STORM SEWERS TO BE REMOVED. SEE SCHEDULE ON SHEET 10.
- "BIKE PATH ENDS" SIGN TO BE REMOVED & RE-ERECTED. THE COST SHALL BE INCLUDED WITH THE COST OF EARTH EXCAVATION.
- END ACCESS CONTROL STA 358+61.37, 124.46' LT (RTE 29) = STA 498+75.37, 78.90' LT (CARD. HILL)
- END ACCESS CONTROL STA 357+12.47, 124.50' RT (RTE 29) = STA 498+75.35, 70.00' RT (CARD. HILL)

LUCILLE C. HAMILTON-HALDEN & MORGAN LIMITED  
 PART OF THE SE 1/4, SW 1/4 SEC 15, T15N, R4W, 3rd PM

FAU RTE	SECTION	COUNTY	TOTAL SHEETS	SHEET NO
8075	03-00167-04-FP	SANGAMON	109	21
STA	486+00	TO STA	500+00	
FED. ROAD DIST. NO.	ILLINOIS	FED. AID PROJECT		



**CURVE #1**  
 P.I. STA 477+23.91  
 $\Delta = 37^\circ-24'-48''$  R  
 $D_a = 00^\circ-59'-16''$   
 $T = 1963.94'$   
 $R = 5800.00'$   
 $L = 3787.31'$   
 $E = 323.48'$   
 P.C. STA 457+59.97  
 P.T. STA 495+47.28  
 S.E. = 2.70%  
 S.E.A.  
 STA 456+43.00 TO STA 458+18.00  
 STA 494+89.00 TO STA 496+64.00



BM #1: CHISELED 'E' ON LIGHT POLE BASE AT POLICE STATION ENTRANCE, STA 504+17.2±, 63.3± LT, EL 578.96

LAYOUT	B.B.	1.3/15/04
DRAWN	B.B.	7/22/04
REVIEWED	L.K.	7/21/04