

Xrefs:
 PLAN-E
 GRID-E
 C-RR
 C-TP
 C-PP02
 C-RW

JEANE E. & RICHARD L. SCOTT
 PART OF THE SE 1/4, NE 1/4,
 SEC. 21, T15N, R4W, 3rd PM

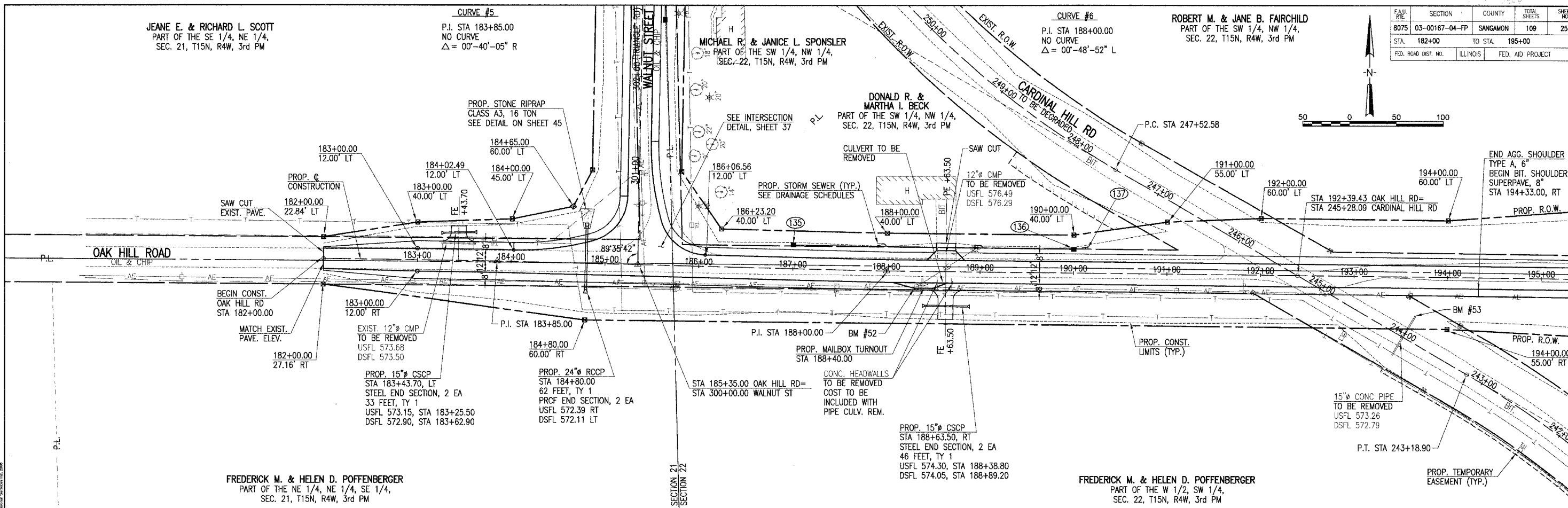
CURVE #5
 P.I. STA 183+85.00
 NO CURVE
 $\Delta = 00^\circ-40'-05''$ R

MICHAEL R. & JANICE L. SPONSLER
 PART OF THE SW 1/4, NW 1/4,
 SEC. 22, T15N, R4W, 3rd PM

CURVE #6
 P.I. STA 188+00.00
 NO CURVE
 $\Delta = 00^\circ-48'-52''$ L

ROBERT M. & JANE B. FAIRCHILD
 PART OF THE SW 1/4, NW 1/4,
 SEC. 22, T15N, R4W, 3rd PM

F&M RTE.	SECTION	COUNTY	TOTAL SHEETS	SHEET NO.
8075	03-00167-04-FP	SANGAMON	109	25
STA. 182+00	TO STA. 195+00			
FED. ROAD DIST. NO.	ILLINOIS	FED. AID PROJECT		

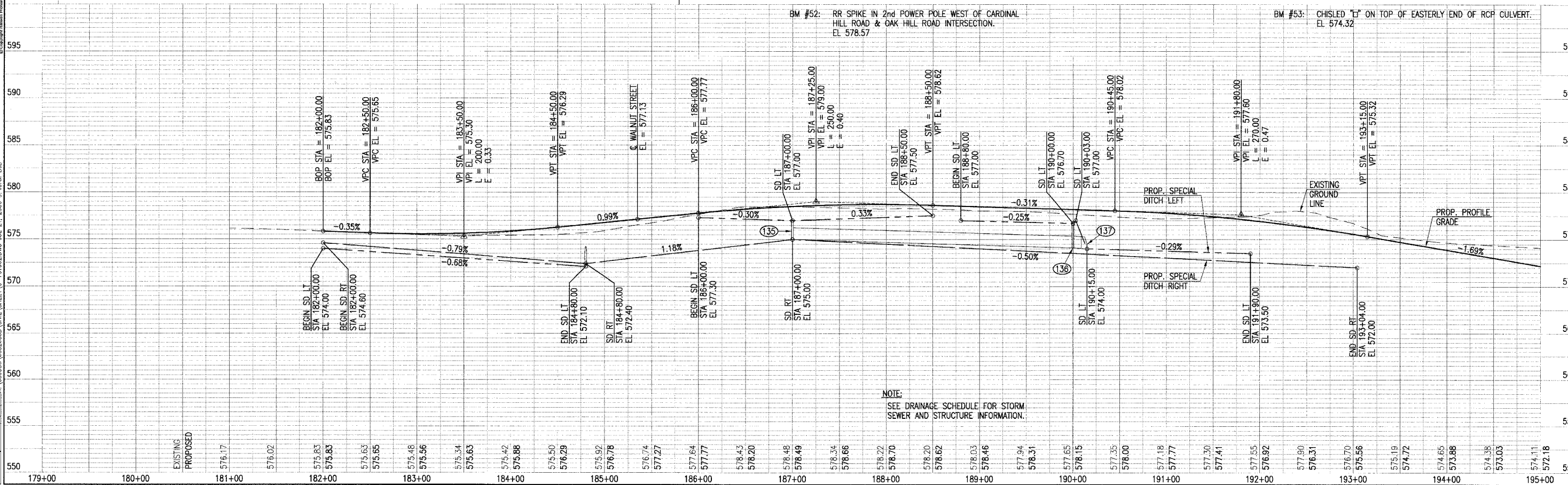


FREDERICK M. & HELEN D. POFFENBERGER
 PART OF THE NE 1/4, NE 1/4, SE 1/4,
 SEC. 21, T15N, R4W, 3rd PM

FREDERICK M. & HELEN D. POFFENBERGER
 PART OF THE W 1/2, SW 1/4,
 SEC. 22, T15N, R4W, 3rd PM



LAYOUT: BB 3/15/04
 DRAWN: BB 7/22/04
 REVIEWED: LK 7/23/04
 11:03:06 (S:\2005\032058\CIVIL\SHEET\C-701002.DWG JUL 21, 2006 9:46AM BJB)



NOTE:
 SEE DRAINAGE SCHEDULE FOR STORM
 SEWER AND STRUCTURE INFORMATION.