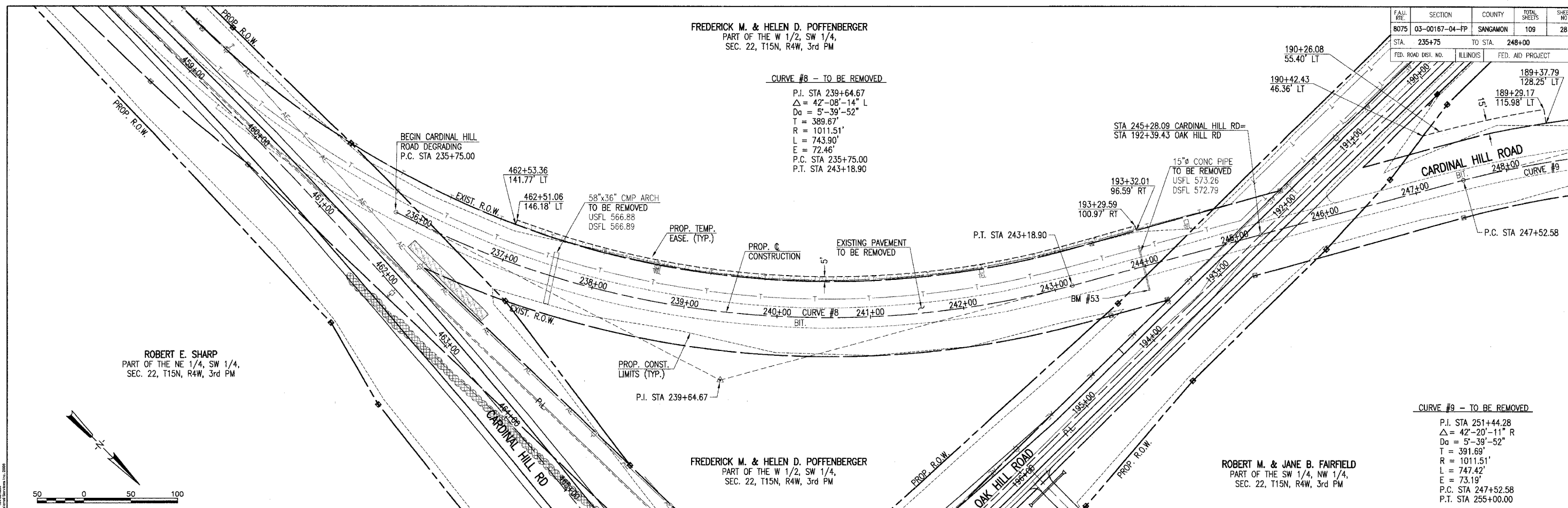


Xrefs:
 PLAN-E
 GR-D-E
 C-PP003
 C-TP
 C-RP
 C-RW

FREDERICK M. & HELEN D. POFFENBERGER
 PART OF THE W 1/2, SW 1/4,
 SEC. 22, T15N, R4W, 3rd PM

FAIR	SECTION	COUNTY	TOTAL SHEETS	SHEET NO
8075	03-00167-04-FP	SANGAMON	109	28

STA.	TO STA.
235+75	248+00



ROBERT E. SHARP
 PART OF THE NE 1/4, SW 1/4,
 SEC. 22, T15N, R4W, 3rd PM

FREDERICK M. & HELEN D. POFFENBERGER
 PART OF THE W 1/2, SW 1/4,
 SEC. 22, T15N, R4W, 3rd PM

ROBERT M. & JANE B. FAIRFIELD
 PART OF THE SW 1/4, NW 1/4,
 SEC. 22, T15N, R4W, 3rd PM



LAYOUT	B.B.	3/15/04
DRAWN	B.B.	7/22/04
REVIEWED	DK	7/21/04

