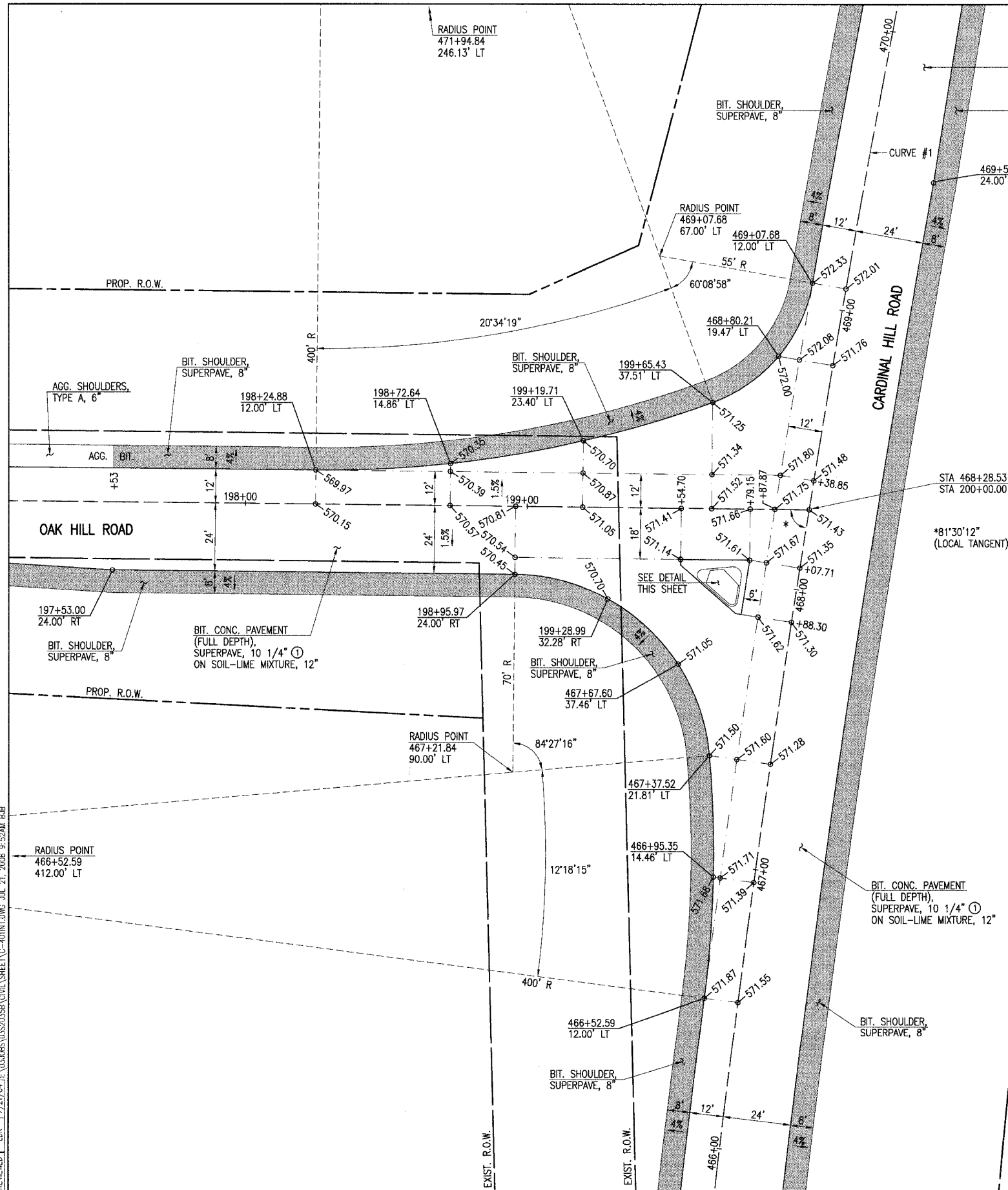
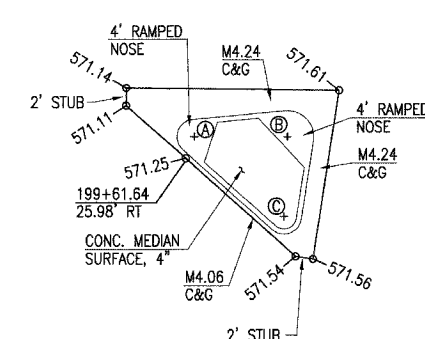


Xref:
C-RP
C-TP
PLAN-E
TITLE-E
C-ROW

F.A.M. R.T.E.	SECTION	COUNTY	TOTAL SHEETS	SHEET NO.
8075	03-00167-04-FP	SANGAMON	109	33
STA.		TO STA.		
FED. ROAD DIST. NO.		ILLINOIS		FED. AID PROJECT



*81°30'12"
(LOCAL TANGENT)



ISLAND DETAIL

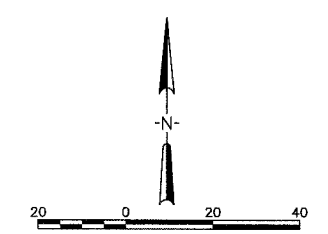
ISLAND RADIUS POINTS

LOCATION	STATION	OFFSET	CURB FACE RADIUS
A	199+62.59	23.51' RT	2'
B	199+73.31	23.39' RT	3'
C	199+73.01	32.50' RT	2'

CURVE #1
P.I. STA 477+23.91
Δ = 37°-24'-48" R
D_o = 00'-59'-16"
T = 1963.94'
R = 5800.00'
L = 3787.31'
E = 323.48'
P.C. STA 457+59.97
P.T. STA 495+47.28
S.E. = 2.70%

① 6-1/2" LOWER BINDER - 2 LIFTS
2-1/4" TOP LIFT BINDER (POLYMERIZED)
1-1/2" SURFACE LIFT (POLYMERIZED)
[BITUMINOUS PRIME/RC 70 (FOG COAT)
REQUIRED BETWEEN SUCCESSIVE LIFTS]
SEE TABLE ON SHEET 5 FOR FULL DEPTH
PAVEMENT CONSTRUCTION TABLE

NOTE:
ALL DIMENSIONS GIVEN ARE TO THE EDGE
OF PAVEMENT UNLESS OTHERWISE NOTED.



INTERSECTION DETAILS
CARDINAL HILL & OAK HILL ROADS
SEC. 03-00167-04-FP
CARDINAL HILL ROAD (C.H. 37)
SANGAMON COUNTY

HANSON
Hanson Professional Services Inc.
1525 South Sixth Street, Springfield, IL 62703
Registration No. 154-001064
© Copyright Hanson Professional Services Inc. 2006

JOB NO.
03S2035B
DATE
6/21/06

LAYOUT BAR 3/15/04
DRAWN BAR 7/22/04
REVIEWED LUK 7/21/04
J:\SACRIS\03S2035B\CHL SHEET\03-00167-04-FP\03S2035B.dwg JUL 21, 2006 9:52AM B&B