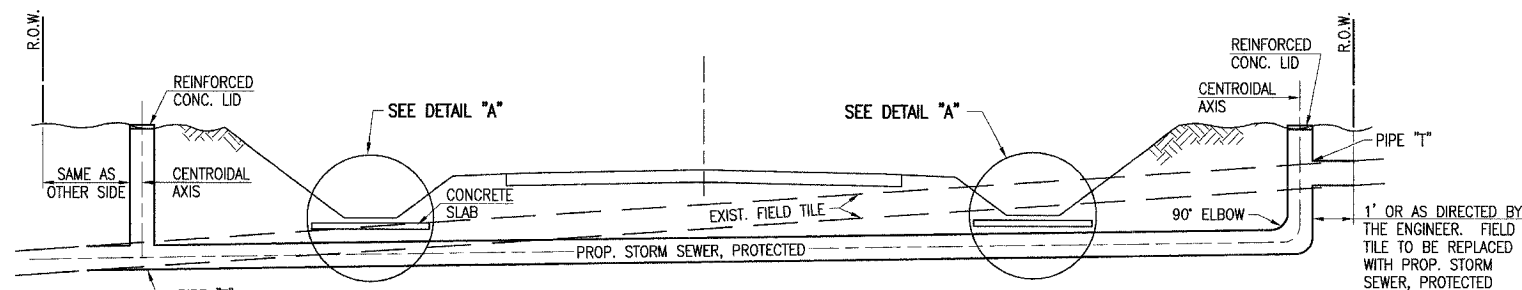


FAU. REC.	SECTION	COUNTY	TOTAL SHEETS	SHEET NO.
8075	03-00167-04-FP	SANGAMON	109	39
STA.		TO STA.		
FED. ROAD DIST. NO.	ILLINOIS	FED. AID PROJECT		



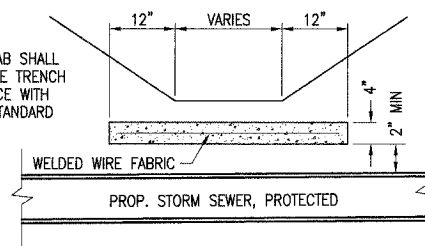
NOTE: DIAMETER OF PROP. STORM SEWER, PROTECTED, SHALL BE EQUAL TO OR GREATER THAN EXIST. FIELD TILE

**STORM SEWER, PROTECTED**

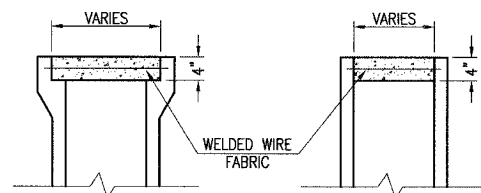
**FIELD TILE ADJUSTMENT NOTES**

1. LOCATION OF THE EXPLORATION TRENCH, 52" DEPTH SHALL BE AS DIRECTED BY THE ENGINEER TO LOCATE EXISTING FIELD TILE DRAINS. THE QUANTITY FOR EXPLORATION TRENCH, 52" WAS ESTIMATED TO ESTABLISH A CONTRACT UNIT PRICE.
2. THE WELDED WIRE FABRIC SHALL BE 6X6 W4XW4 CONFORMING TO THE REQUIREMENTS OF A.S.T.M. A158.
3. THE GALVANIZED HARDWARE CLOTH SHALL MEET THE APPROVAL OF THE ENGINEER PRIOR TO PLACEMENT.
4. LOCATIONS OF ALL EXISTING FIELD TILES ARE UNKNOWN. ALL FIELD TILE ADJUSTMENT SHALL BE DONE IN ACCORDANCE WITH SECTION 611 OF THE STANDARD SPECIFICATIONS FOR ROAD AND BRIDGE CONSTRUCTION.
5. THE CONCRETE HEADWALL, EXCELSIOR BLANKET, AND ADDITIONAL HARDWARE SHOWN SHALL BE INCLUDED IN THE COST FOR THIS WORK. ALL EXISTING FIELD TILE THAT WILL REMAIN AND BE ABANDONED SHALL BE BLOCKED WITH MASONRY OR CRUSHED AS DIRECTED BY THE ENGINEER OR REMOVED WHEN NECESSARY FOR CONSTRUCTION. THE COST OF SUCH WORK SHALL BE INCLUDED IN THE CONTRACT UNIT PRICE PER EACH FOR FIELD TILE ADJUSTMENT. SEE SPECIAL PROVISIONS.
6. ANY EXISTING TILE THAT IS DAMAGED BY THE CONTRACTOR SHALL BE REPAIRED TO THE SATISFACTION OF THE ENGINEER AT THE CONTRACTOR'S EXPENSE.
7. WELDED WIRE FABRIC SHALL BE 6"x6" MESH, #4 GAUGE, 58 POUNDS PER 100 SQUARE FEET, CONFORMING TO THE REQUIREMENTS OF A.S.T.M. A158. THE COST FOR FURNISHING AND PLACING THE WELDED WIRE FABRIC AND CONCRETE SLAB SHALL BE INCLUDED IN THE CONTRACT UNIT PRICE PER FOOT FOR STORM SEWER, PROTECTED.
8. ALL EXISTING FIELD TILE SHALL BE REPLACED WITH STORM SEWER OF THE TYPE REQUIRED FOR THE DEPTH OF COVER. THE 4", 6", 8", 10" OR 12" STORM SEWER SHALL BE PAID FOR AT THE CONTRACT UNIT PRICE PER FOOT FOR STORM SEWER SPECIAL OR STORM SEWER, PROTECTED REGARDLESS OF DEPTH. THE FOOT MEASUREMENT SHALL BE MADE ALONG THE CENTROIDAL AXIS AND THIS PRICE SHALL INCLUDE ALL BENDS, ELBOWS, OR PIPE "12" WHICH ARE REQUIRED.
9. REINFORCED CONCRETE LID SHALL BE MISCELLANEOUS CONCRETE OR PRECAST REINFORCED CONCRETE AND THE COST OF SUCH SHALL BE INCLUDED WITH THE CONTRACT UNIT PRICE FOR STORM SEWER, PROTECTED.
10. THE ESTIMATE OF QUANTITIES INCLUDES 50 FEET OF 4", 6", 8", 10" AND 12" STORM SEWERS SPECIAL AND STORM SEWERS PROTECTED, CLASS A FOR THE PURPOSE OF ESTABLISHING A CONTRACT UNIT PRICE PER FOOT.
11. FIELD TILE JUNCTION VAULTS SHALL BE CONSTRUCTED IN ACCORDANCE WITH SECTION 602 OF THE STANDARD SPECIFICATIONS. EXCAVATION, BEDDING AND BACKFILL SHALL BE INCLUDED IN THE CONTRACT UNIT PRICE, PER EACH FOR FIELD TILE JUNCTION VAULTS, 2' DIA. THE QUANTITY FOR FIELD TILE JUNCTION VAULTS WAS ESTIMATED TO ESTABLISH A CONTRACT UNIT PRICE.

WIDTH OF CONC. SLAB SHALL BE THE SAME AS THE TRENCH WIDTH IN ACCORDANCE WITH SEC. 611 OF THE STANDARD SPECIFICATIONS



**DETAIL "A"**

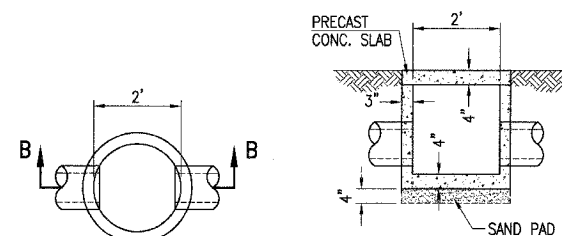


**ALT. A**

**ALT. B**

DIMENSIONS WILL VARY TO MATCH NOMINAL SIZE OF PROPOSED STORM SEWER

**REINFORCED CONCRETE LID DETAIL**

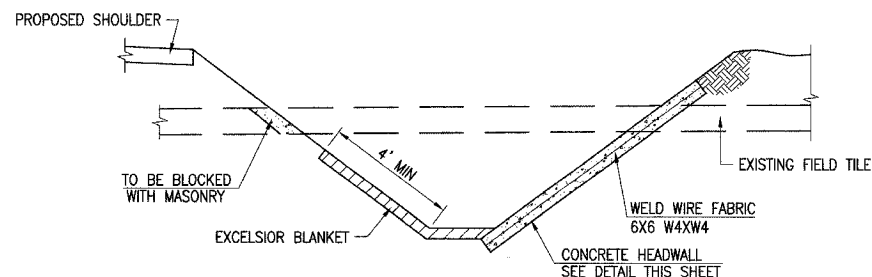


**PLAN**

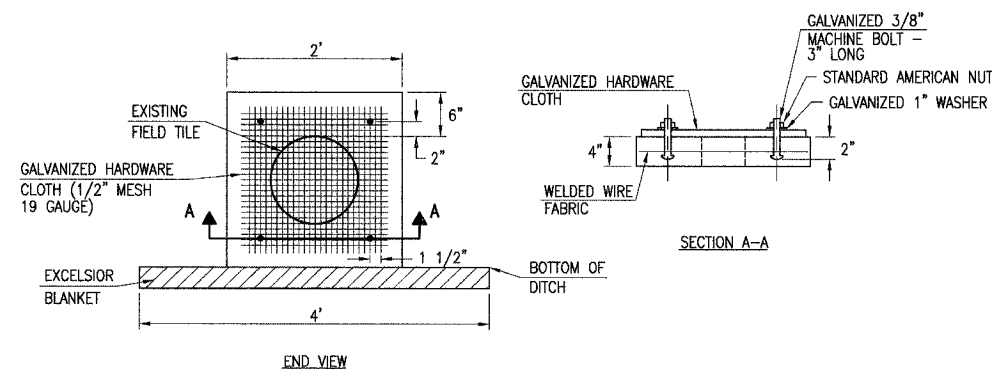
**SECTION B-B**

THE ENTIRE STRUCTURE INCLUDING LID AND SAND PAD SHALL BE PAID FOR AT THE CONTRACT UNIT PRICE FOR FIELD TILE JUNCTION VAULT, 2' DIA.

**FIELD TILE JUNCTION VAULT DETAIL**



**SECTION AT FIELD TILE ADJUSTMENT**



**END VIEW**

**SECTION A-A**

**FIELD TILE CONCRETE HEADWALL DETAIL**

LAYOUT: BUB 3/15/04  
 DRAWN: BUB 7/27/04  
 REVIEWED: BUB 7/27/04  
 03S20358 (03S20358) CIVIL SHEET C-502DET.DWG, JUL 21, 2006 9:56AM BUB

**FIELD TILE ADJUSTMENT DETAILS**  
 SEC. 03-00167-04-FP  
 CARDINAL HILL ROAD (C.H. 37)  
 SANGAMON COUNTY



Hanson Professional Services Inc.  
 1525 South Sixth Street, Springfield, IL 62703  
 Registration No. 04-001004  
 © Copyright Hanson Professional Services Inc. 2006

JOB NO.  
03S20358  
 DATE  
6/21/06