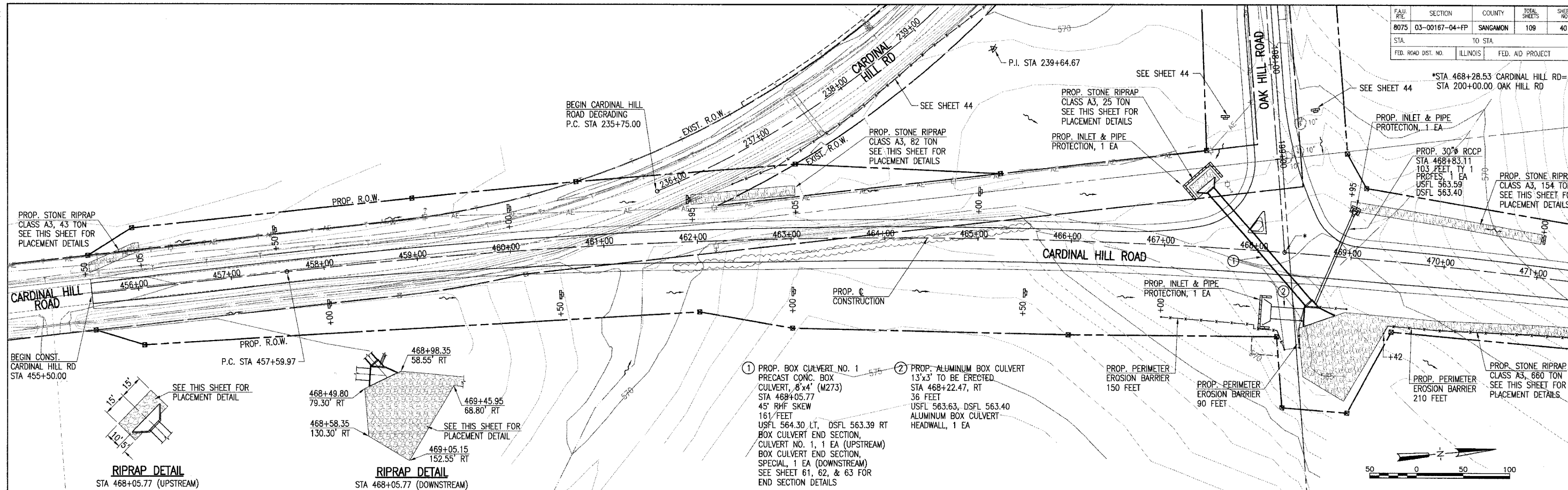
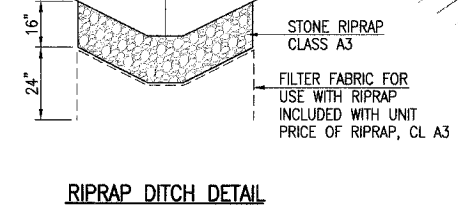
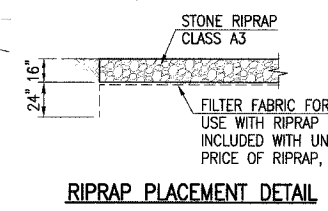
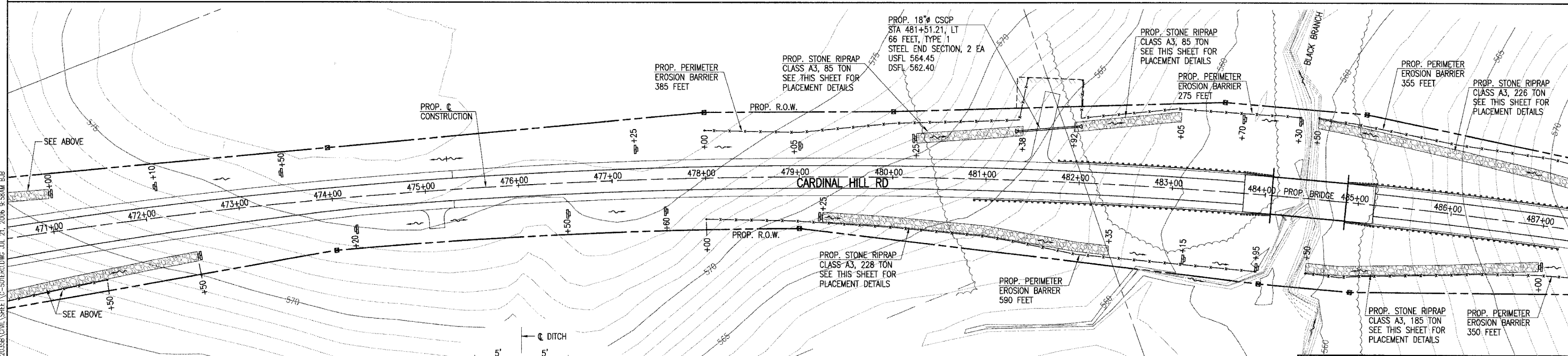


Xrefs:  
 PLAN-E  
 C-RR  
 C-TP  
 TITLE-E  
 C-ROW

FAU. RTE.	SECTION	COUNTY	TOTAL SHEETS	SHEET NO.
8075	03-00167-04-FP	SANGAMON	109	40



REVISIONS  
 NO. DATE BY  
 1 3/15/04 BLP  
 2 7/22/04 BLP  
 3 7/21/04 BLP



- LEGEND**
- TEMPORARY DITCH CHECK
  - PERIMETER EROSION BARRIER
  - INLET & PIPE PROTECTION
  - FLOW DIRECTION

**EROSION CONTROL PLAN**  
 SEC. 03-00167-04-FP  
 CARDINAL HILL ROAD (C.H. 37)  
 SANGAMON COUNTY

JOB NO.  
03S2035B  
DATE  
6/21/06

Hanson Professional Services Inc.  
 1525 South Sixth Street, Springfield, IL 62703  
 Registration No. 104-001004  
 © Copyright Hanson Professional Services Inc. 2006