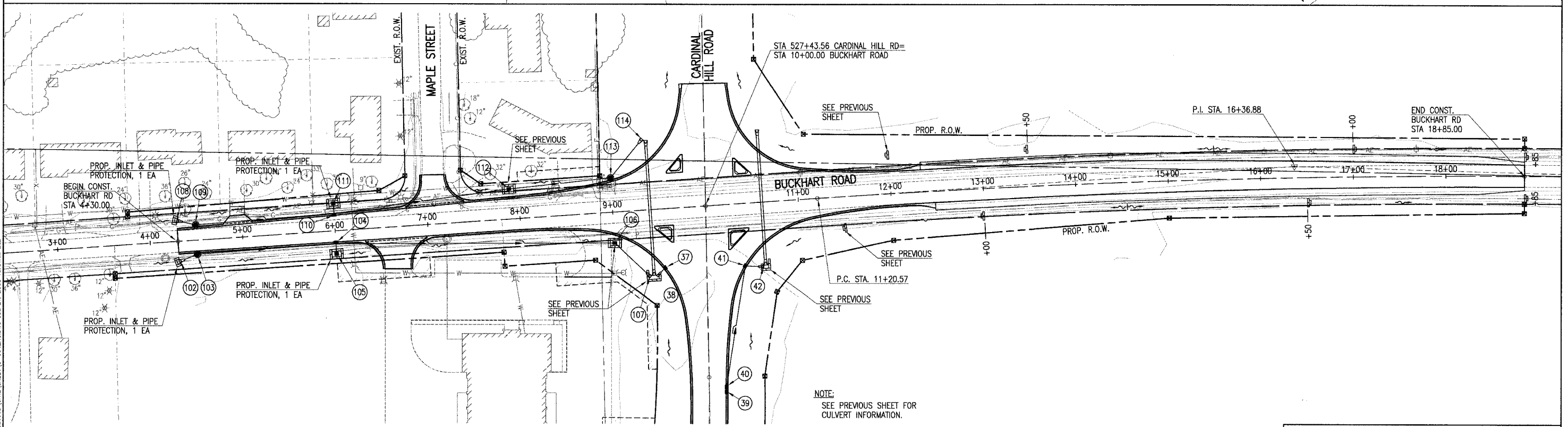
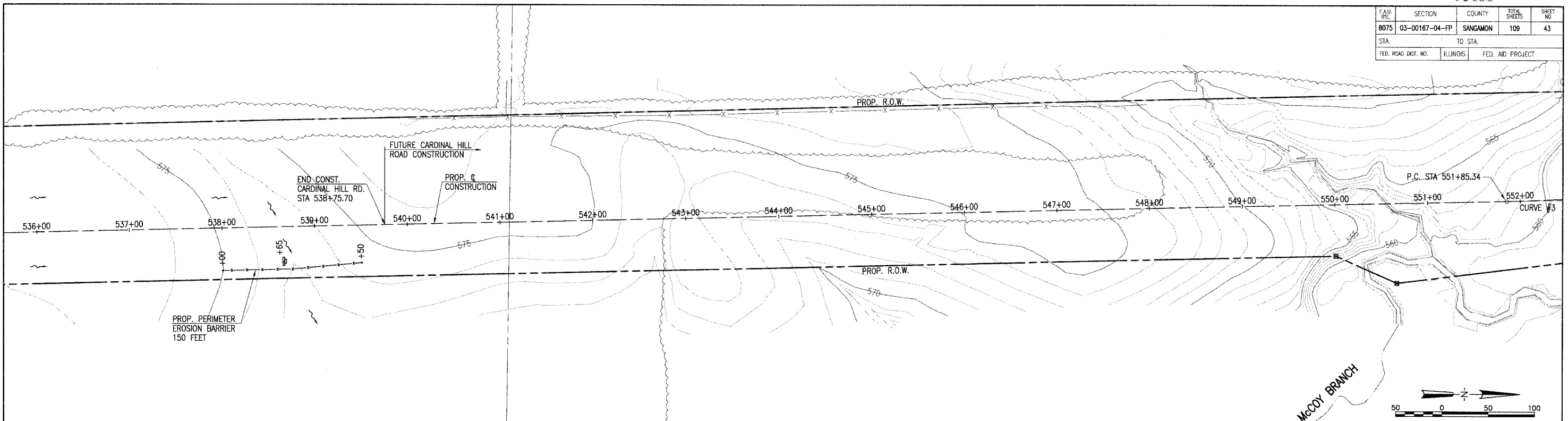


Xrefs:
 PLAN-E
 C-RP
 C-TP
 TITLE-E
 C-ROW

FAU. RE.	SECTION	COUNTY	TOTAL SHEETS	SHEET NO.
8075	03-00167-04-FP	SANGAMON	109	43
STA.		TO STA.		
FED. ROAD DIST. NO.	ILLINOIS	FED. AID PROJECT		



\03JAMES\03S20358\CIVIL\SHEET\50-HERC.DWG, JUL 21, 2006 10:01AM E.B.

LAYOUT	BAR	3/15/04
DRAWN	BAR	7/22/04
REVIEWED	BAR	7/27/04

LEGEND

- TEMPORARY DITCH CHECK
- PERIMETER EROSION BARRIER
- INLET & PIPE PROTECTION
- FLOW DIRECTION

EROSION CONTROL PLAN
SEC. 03-00167-04-FP
CARDINAL HILL ROAD (C.H. 37)
SANGAMON COUNTY

JOB NO.
03S20358

DATE
6/21/06

Hanson Professional Services Inc.
 1525 South Sixth Street, Springfield, IL 62703
 Registration No. 164-001004
 © Copyright Hanson Professional Services Inc. 2006