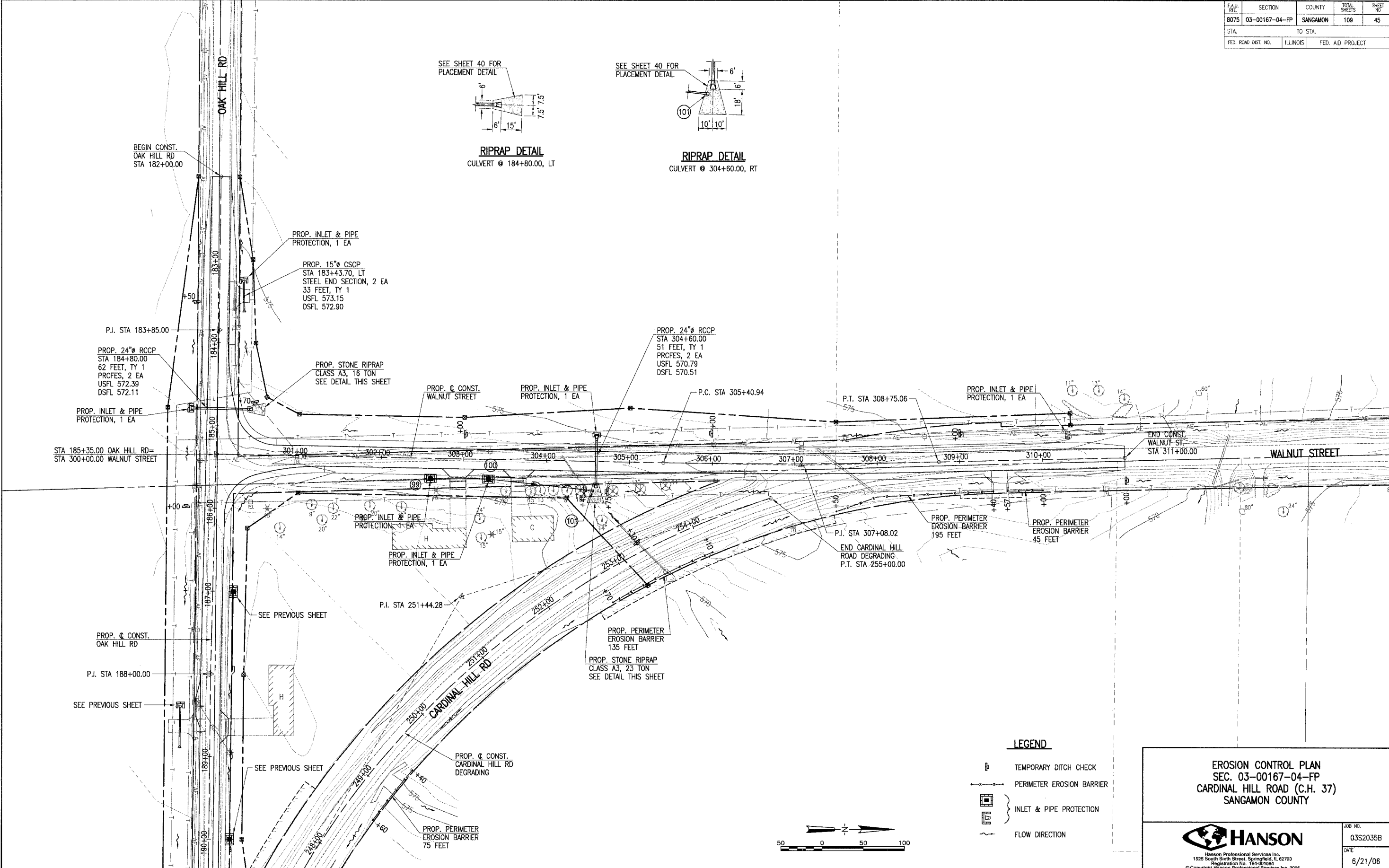
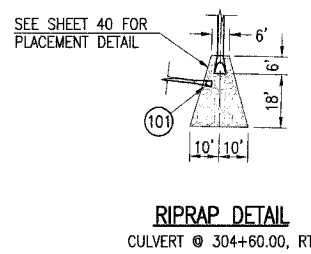
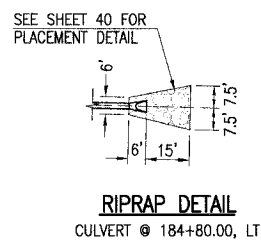


Xrefs:
 PLAN-E
 C-RP
 C-TP
 TITLE-E
 C-ROW

FAU. RE.	SECTION	COUNTY	TOTAL SHEETS	SHEET NO.
8075	03-00167-04-FP	SANGAMON	109	45
STA.		TO STA.		
FED. ROAD DIST. NO.	ILLINOIS	FED. AID PROJECT		



BEGIN CONST. OAK HILL RD STA 182+00.00

PROP. INLET & PIPE PROTECTION, 1 EA

PROP. 15" CSCP STA 183+43.70, LT STEEL END SECTION, 2 EA 33 FEET, TY 1 USFL 573.15 DSFL 572.90

P.I. STA 183+85.00

PROP. 24" RCCP STA 184+80.00 62 FEET, TY 1 PRCFES, 2 EA USFL 572.39 DSFL 572.11

PROP. INLET & PIPE PROTECTION, 1 EA

PROP. STONE RIPRAP CLASS A3, 16 TON SEE DETAIL THIS SHEET

STA 185+35.00 OAK HILL RD= STA 300+00.00 WALNUT STREET

PROP. C CONST. WALNUT STREET

PROP. INLET & PIPE PROTECTION, 1 EA

P.C. STA 305+40.94

PROP. 24" RCCP STA 304+60.00 51 FEET, TY 1 PRCFES, 2 EA USFL 570.79 DSFL 570.51

P.T. STA 308+75.06

PROP. INLET & PIPE PROTECTION, 1 EA

END CONST. WALNUT ST. STA 311+00.00

PROP. INLET & PIPE PROTECTION, 1 EA

PROP. INLET & PIPE PROTECTION, 1 EA

PROP. PERIMETER EROSION BARRIER 195 FEET

PROP. PERIMETER EROSION BARRIER 45 FEET

P.I. STA 307+08.02

END CARDINAL HILL ROAD DEGRADING P.T. STA 255+00.00

P.I. STA 251+44.28

PROP. PERIMETER EROSION BARRIER 135 FEET

PROP. STONE RIPRAP CLASS A3, 23 TON SEE DETAIL THIS SHEET

SEE PREVIOUS SHEET

PROP. C CONST. OAK HILL RD

P.I. STA 188+00.00

SEE PREVIOUS SHEET

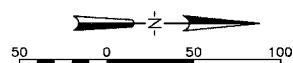
SEE PREVIOUS SHEET

PROP. C CONST. CARDINAL HILL RD DEGRADING

PROP. PERIMETER EROSION BARRIER 75 FEET

LEGEND

- TEMPORARY DITCH CHECK
- PERIMETER EROSION BARRIER
- INLET & PIPE PROTECTION
- FLOW DIRECTION



EROSION CONTROL PLAN
 SEC. 03-00167-04-FP
 CARDINAL HILL ROAD (C.H. 37)
 SANGAMON COUNTY

JOB NO. 03S2035B
 DATE 6/21/06

HANSON
Hanson Professional Services Inc.
 1525 South Sixth Street, Springfield, IL 62703
 Registration No. 164-001064
 © Copyright Hanson Professional Services Inc. 2006

LAYOUT: BJB 3/15/04
 DRAWN: BJB 7/22/04
 REVISED: LOK 7/21/04
 J:\USERS\J3520358\CVL\SHR\03-00167-04-FP\03-00167-04-FP\03-00167-04-FP.dwg JUL 21, 2006 10:02AM BJB