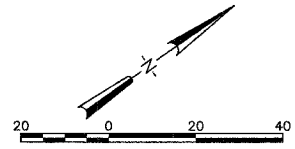


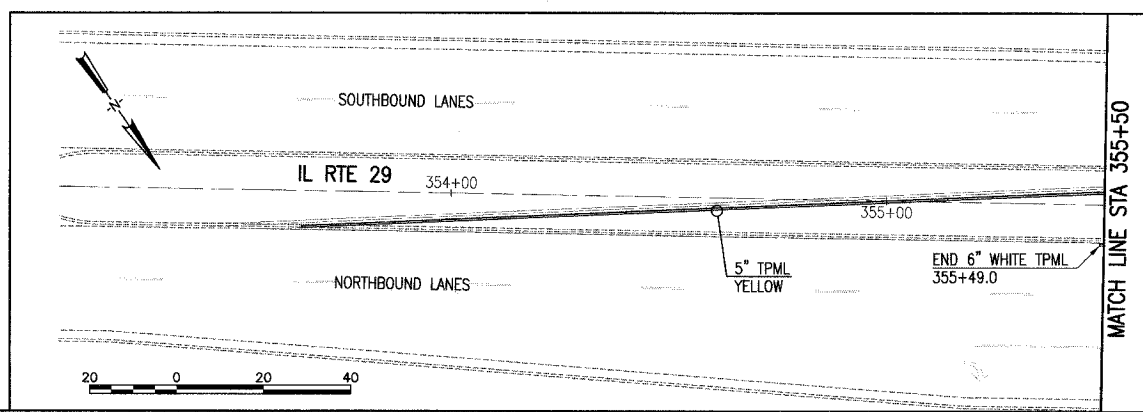
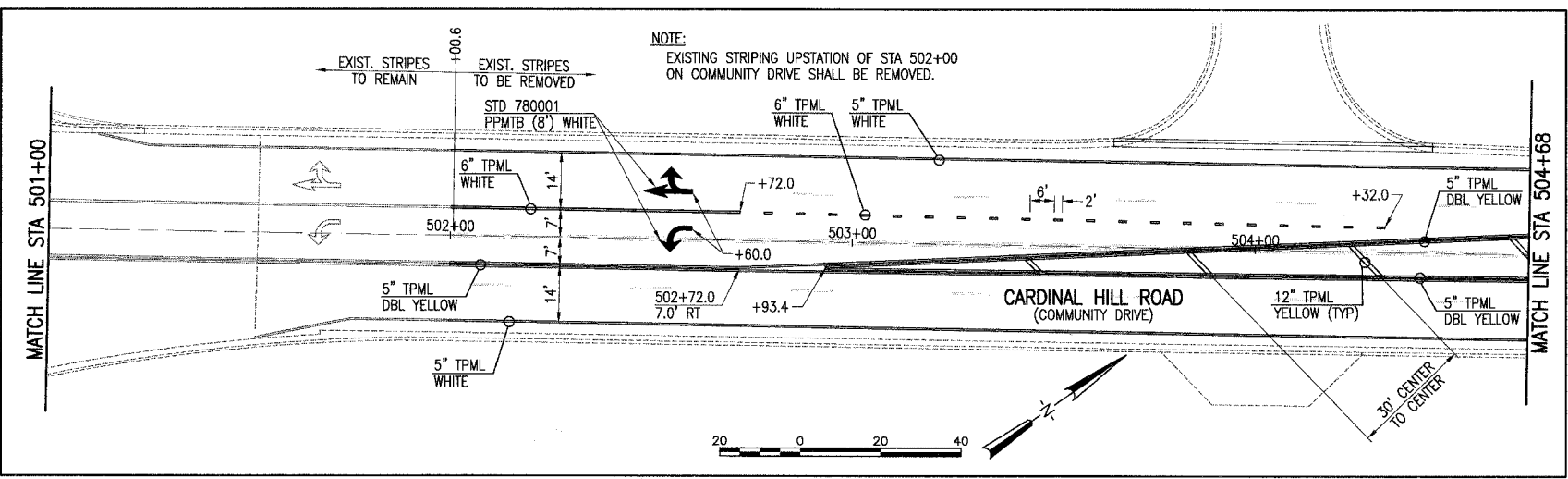
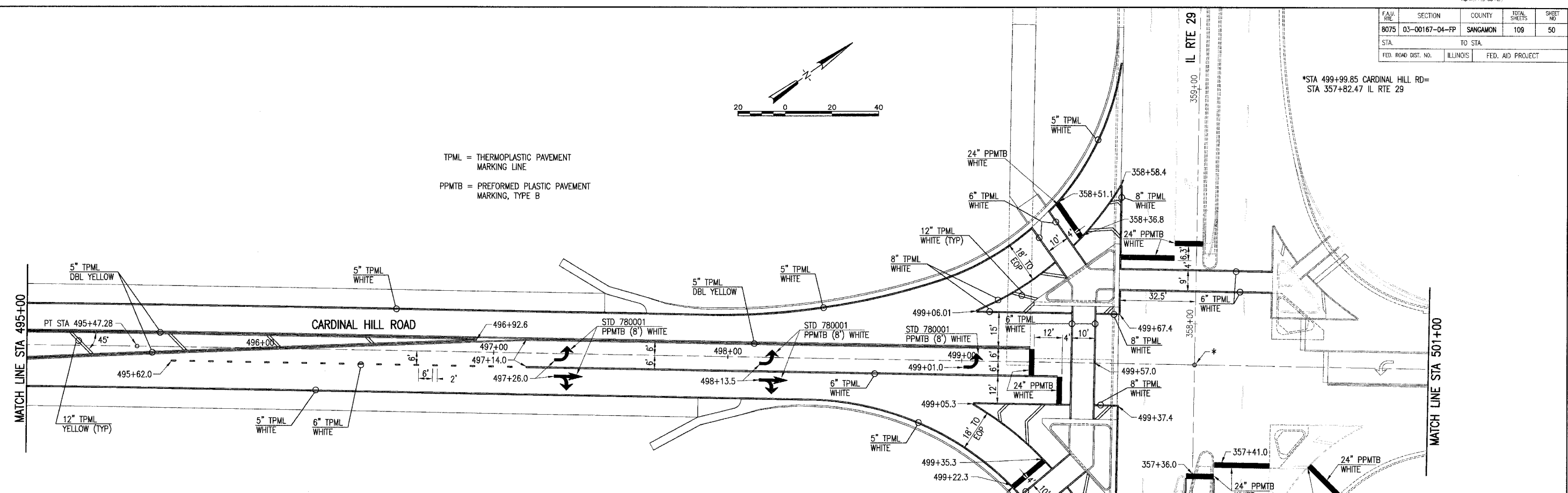
Xrefs:  
PLAN-E  
TITLE-E  
C-FP  
C-TP

F.A.M. RTE.	SECTION	COUNTY	TOTAL SHEETS	SHEET NO.
B075	03-00167-04-FP	SANGAMON	109	50
STA.		TO STA.		
FED. ROAD DIST. NO.		ILLINOIS	FED. AID PROJECT	

\*STA 499+99.85 CARDINAL HILL RD=  
STA 357+82.47 IL RTE 29



TPML = THERMOPLASTIC PAVEMENT MARKING LINE  
 PPMTB = PREFORMED PLASTIC PAVEMENT MARKING, TYPE B



NOTES  
 1. DIMENSIONS ARE TO CENTER OF STRIPE(S)  
 UNLESS OTHERWISE NOTED.

PAVEMENT MARKING  
 SEC. 03-00167-04-FP  
 CARDINAL HILL ROAD (C.H. 37)  
 SANGAMON COUNTY



JOB NO.  
03S20358  
 DATE  
6/21/06

LAYOUT: BJB 3/15/04  
 DRAWN: BJB 7/22/04  
 REVIEWED: LDK 1/21/06  
 I:\03\085\03S20358\CIVIL\37LET\C-105MARK.DWG, JUL 21, 2006 10:05AM BJB