

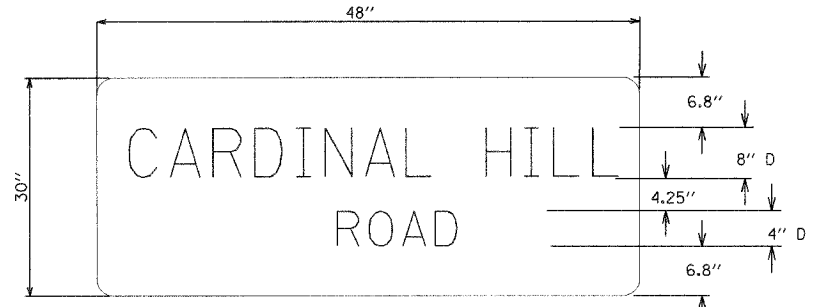
F.A.U. RTE.	SECTION	COUNTY	TOTAL SHEETS	SHEET NO.
B075	03-00167-04-FP	SANGAMON	109	57
STA.		TO STA.		
FED. ROAD DIST. NO.		ILLINOIS	FED. AID PROJECT	

TRAFFIC SIGNAL LEGEND

- EXIST. HANDHOLE
- PROP. HANDHOLE
- PROP. DOUBLE HANDHOLE
- PROP. JUNCTION BOX
- PROP. SERVICE INSTALLATION
- PROP. SIGNAL CONTROLLER
- PROP. TRAFFIC SIGNAL POST
- PROP. MAST ARM ASSEMBLY AND POLE
- PROP. SIGNAL HEAD
- PROP. SIGNAL HEAD W/ BACKPLATE
- PROP. PEDESTRIAN SIGNAL HEAD
- PROP. PEDESTRIAN PUSH-BUTTON DETECTOR
- PROP. SIGN
- PROP. VIDEO DETECTION UNIT
- LUMINAIRE
- EXIST. CONDUIT
- PROP. CONDUIT

LENGTH-T (TRENCHED)
LENGTH-A (AUGERED)
DIAMETER-CONDUIT MATERIAL

STREET NAME SIGN
(NOT TO SCALE)
DETAIL (B)



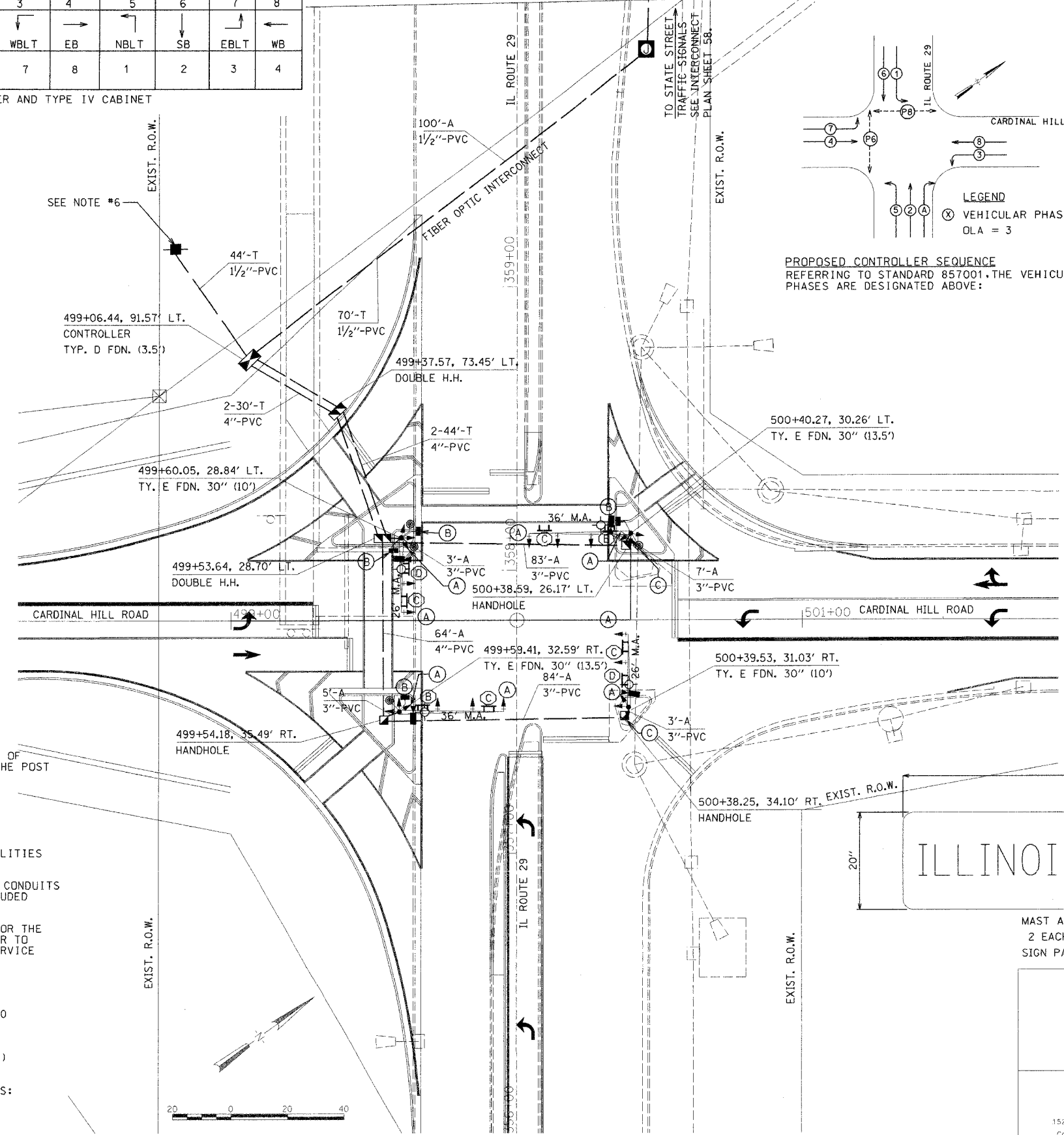
MAST ARM MOUNTED
2 EACH REQUIRED
SIGN PANEL-TYPE 2

CONTROLLER PHASING

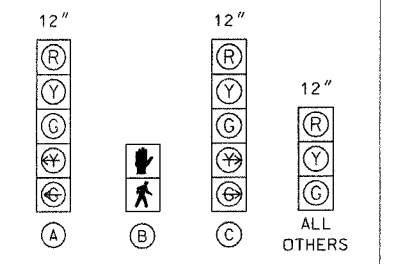
PHASE Ø	1	2	3	4	5	6	7	8
MOVEMENT								
CONCURRENT MOVEMENT PERMITTED	5	6	7	8	1	2	3	4

FULL-ACTUATED CONTROLLER AND TYPE IV CABINET

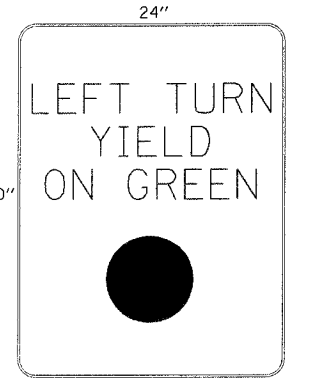
MATCHLINE STATION 360+00.00



TRAFFIC SIGNAL FACES

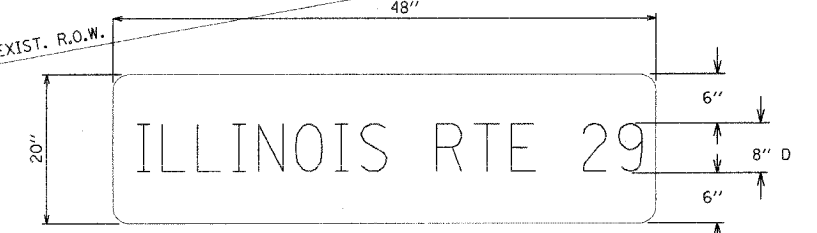


TRAFFIC SIGN
(NOT TO SCALE)
DETAIL (C)



MAST ARM MOUNTED
R10-12
4 EACH REQUIRED
SIGN PANEL-TYPE 1

STREET NAME SIGN
(NOT TO SCALE)
DETAIL (D)



MAST ARM MOUNTED
2 EACH REQUIRED
SIGN PANEL-TYPE 2

TRAFFIC SIGNAL PLAN
SEC. 03-00167-04-FP
IL ROUTE 29 AND
CARDINAL HILL ROAD (C.H. 37)
SANGAMON COUNTY



Hanson Professional Services Inc.
1525 South Sixth Street, Springfield, IL 62703
Registration No. 184-301084
Copyright Hanson Professional Services Inc. 2006

JOB NO.
03520358
DATE
6/21/06

- ALL TRAFFIC SIGNAL POST FOUNDATIONS SHALL BE PLACED A MINIMUM DISTANCE OF TWO (2) FEET BEHIND THE FACE OF THE CURB. IF A CURB DOES NOT EXIST, THE POST FOUNDATION SHALL BE PLACED TEN (10) FEET FROM THE EDGE OF PAVEMENT OR TWO (2) FEET FROM THE EDGE OF SHOULDER.
- SEE PAVEMENT MARKING SHEET FOR LOCATIONS OF PAVEMENT MARKINGS.
- 12" LED LENSES WILL BE USED ON ALL SIGNAL FACES.
- THE CONTRACTOR SHALL VERIFY THE EXACT LOCATIONS OF ALL UNDERGROUND UTILITIES PRIOR TO BEGINNING CONSTRUCTION.
- 1/2" CONTINUOUS NYLON ROPE SHALL BE FURNISHED AND LEFT IN PLACE IN ALL CONDUITS BETWEEN HANDHOLES, FOUNDATIONS AND CONTROLLER. THE ROPE SHALL BE INCLUDED IN THE COST OF THE RESPECTIVE CONDUIT PAY ITEM.
- THE CONTRACTOR SHALL BE RESPONSIBLE FOR OBTAINING ELECTRICAL SERVICE FOR THE TRAFFIC SIGNALS. THE CONTRACTOR SHALL CONTACT THE UTILITY COMPANY PRIOR TO COMMENCEMENT OF WORK TO OBTAIN UTILITY COMPANY REQUIREMENTS FOR THE SERVICE INSTALLATION.
- THE CONTROLLER SHALL BE ORIENTED SUCH THAT INTERSECTION OPERATION AND CONTROLLER COMPONENTS CAN BE VIEWED SIMULTANEOUSLY.
- ALL ELECTRICAL EQUIPMENT SHALL BE INSTALLED IN CONFORMANCE WITH NFPA 70 (NATIONAL ELECTRICAL CODE-MOST CURRENT ISSUE IN FORCE), THE RESPECTIVE EQUIPMENT MANUFACTURER'S DIRECTIONS AND ALL OTHER APPLICABLE LOCAL CODES, LAWS, ORDINANCES, AND REQUIREMENTS IN FORCE. ANY INSTALLATIONS WHICH VOID THE U.L. LISTING, ETL LISTING (OR OTHER THIRD PARTY LISTING) AND/OR THE MANUFACTURER'S WARRANTY OF A DEVICE SHALL NOT BE PERMITTED.
- COLOR CODE 120V AC POWER WIRING CONDUCTOR INSULATION TO POLE LUMINAIRE:
HOT - BLACK
NEUTRAL - WHITE
GROUND - GREEN



LAYOUT: B.W. 6-10-04
 DRAWN: B.W. 6-10-04
 REVIEWED: CH 6-11-04
 07/27/2006
 R03500503520358/IL SHEET C-12/TS-99