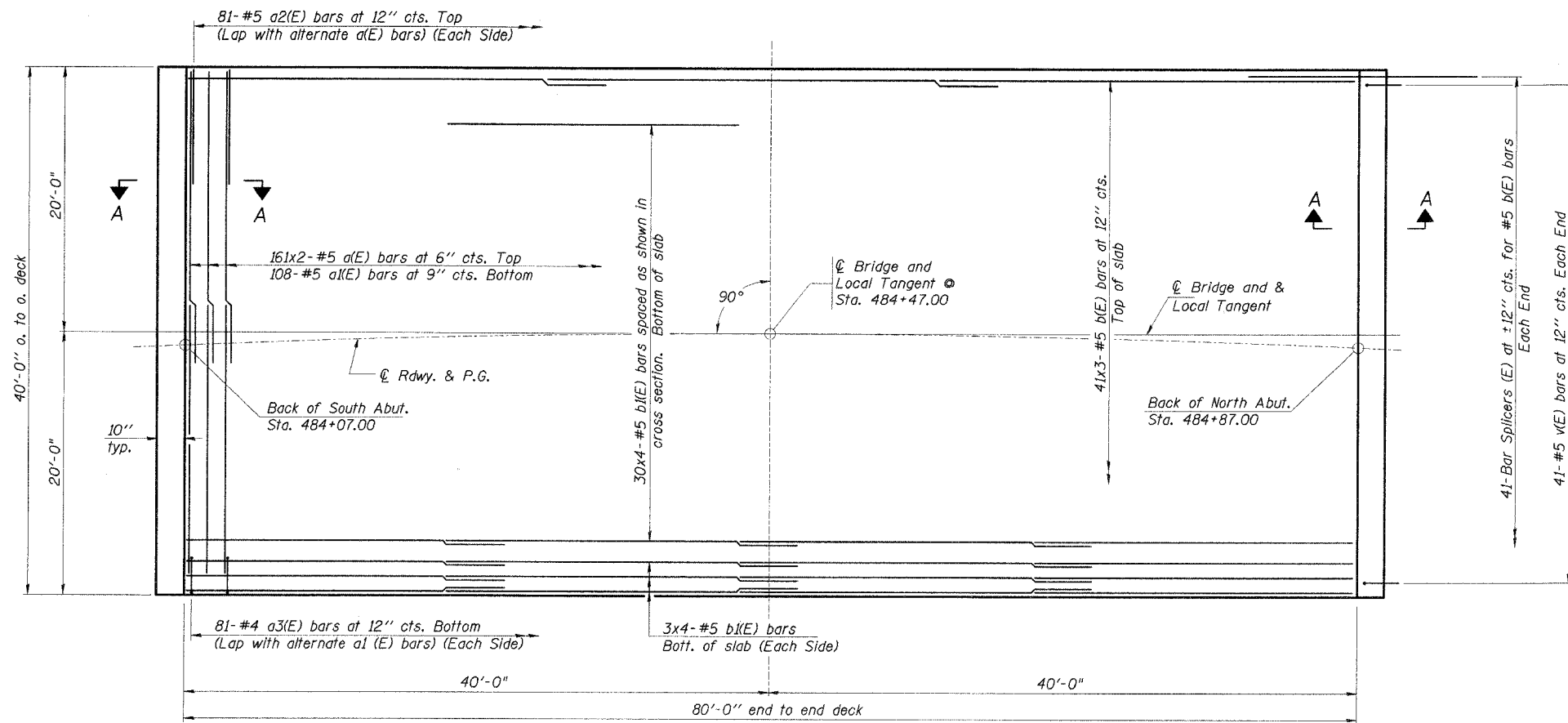
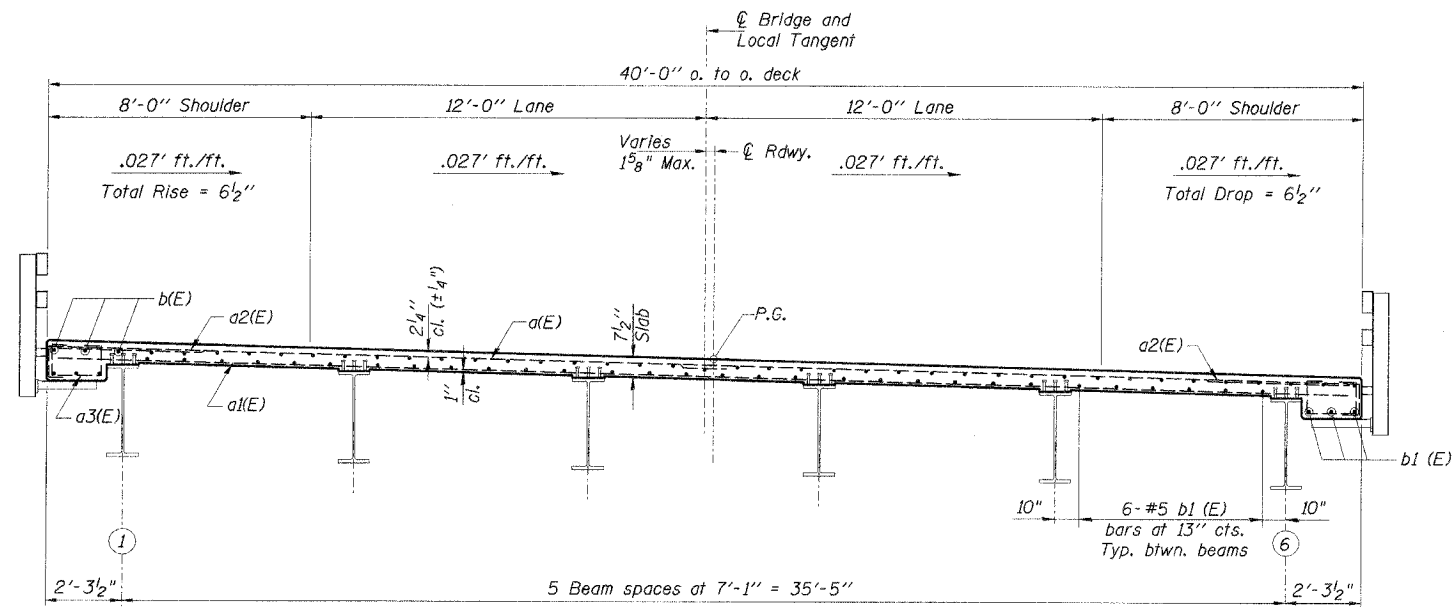


F.A.U. RTE.	SECTION	COUNTY	TOTAL SHEETS	SHEET NO.
8075	03-00167-04-FP	SANGAMON	109	68
STA.		TO STA.		
FED. ROAD DIST. NO.		ILLINOIS FED. AID PROJECT		

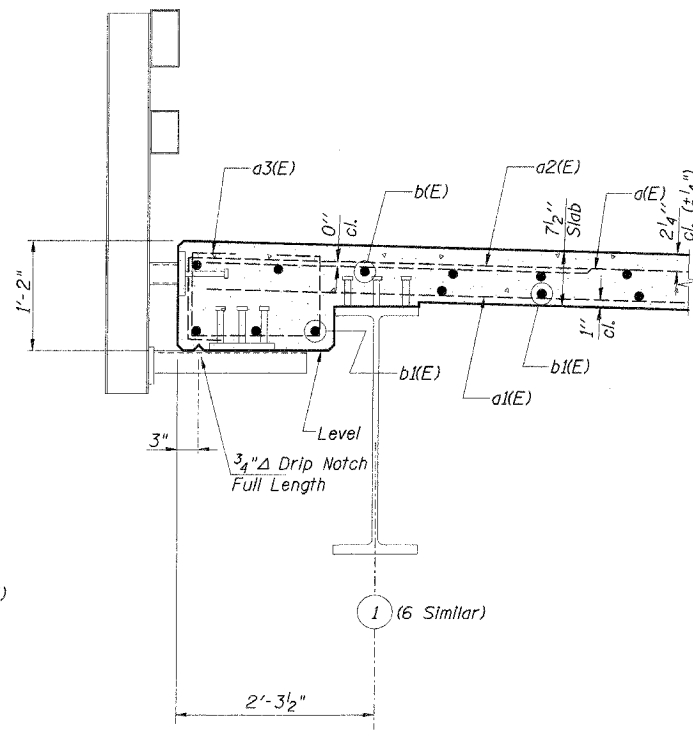
Sheet 4 of 11



PLAN



CROSS SECTION  
(Looking North)



SECTION THRU SLAB OVERHANG

Notes:  
See Sheet 5 of 11 for superstructure details and Bill of Material.  
Reinforcement bars designated (E) shall be epoxy coated.  
Bars indicated thus 3x4-#5 etc. indicates 3 lines of bars with 4 lengths per line.  
See Bar Splicer (Coupler) Details, Sheet 10 of 11.

MIN. BAR LAPS  
#5 Bar - 2'-2"

SUPERSTRUCTURE  
CARDINAL ROAD over BLACK BRANCH CREEK  
SECTION 03-00167-04-FP  
SANGAMON COUNTY  
STATION 484+47  
STRUCTURE NO. 084-3640

© Copyright Hanson Professional Services Inc. 2006



JOB NO.  
03S2035B  
DATE  
6/21/06

07/27/2006 10:06:32 AM I:\03\085\03\0350\structures\Black Branch Creek\Bridge Plans\F04-Super.dgn

LAYOUT	M.A.M.	3/13/04
DRAWN	RF	3/16/04
REVIEWED	IS.B.P.	3/20/04