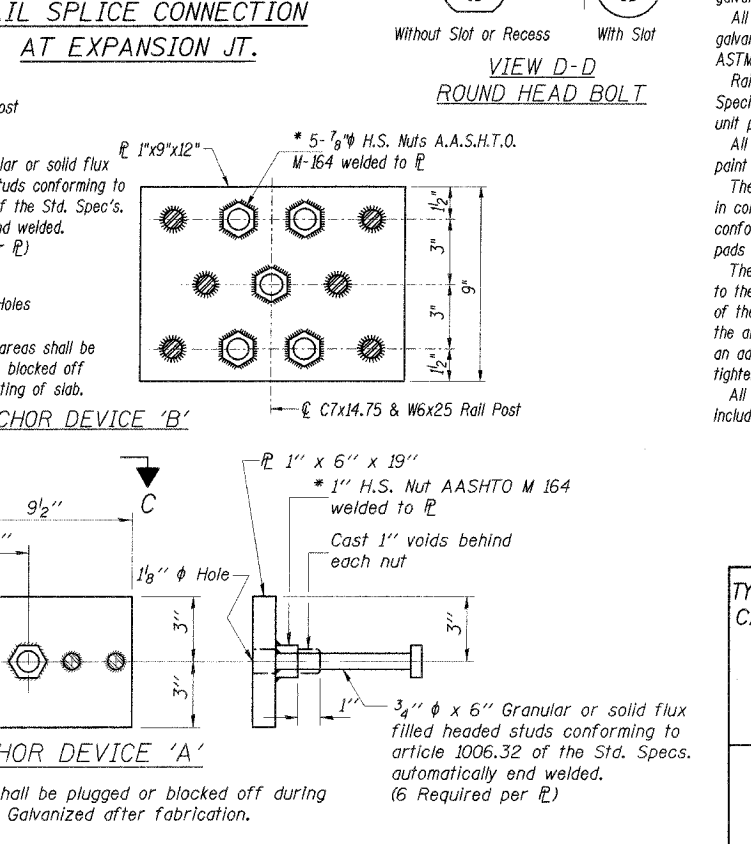
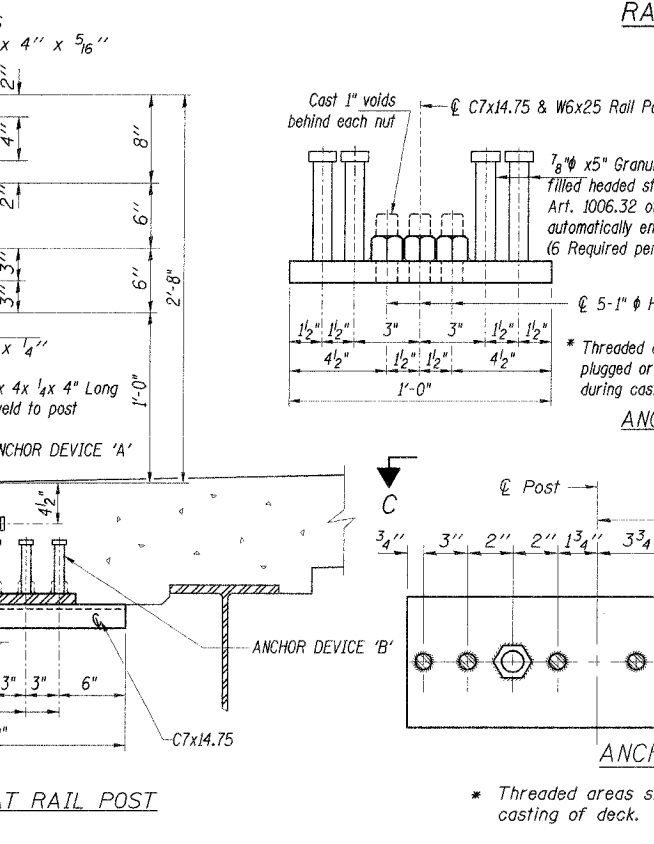
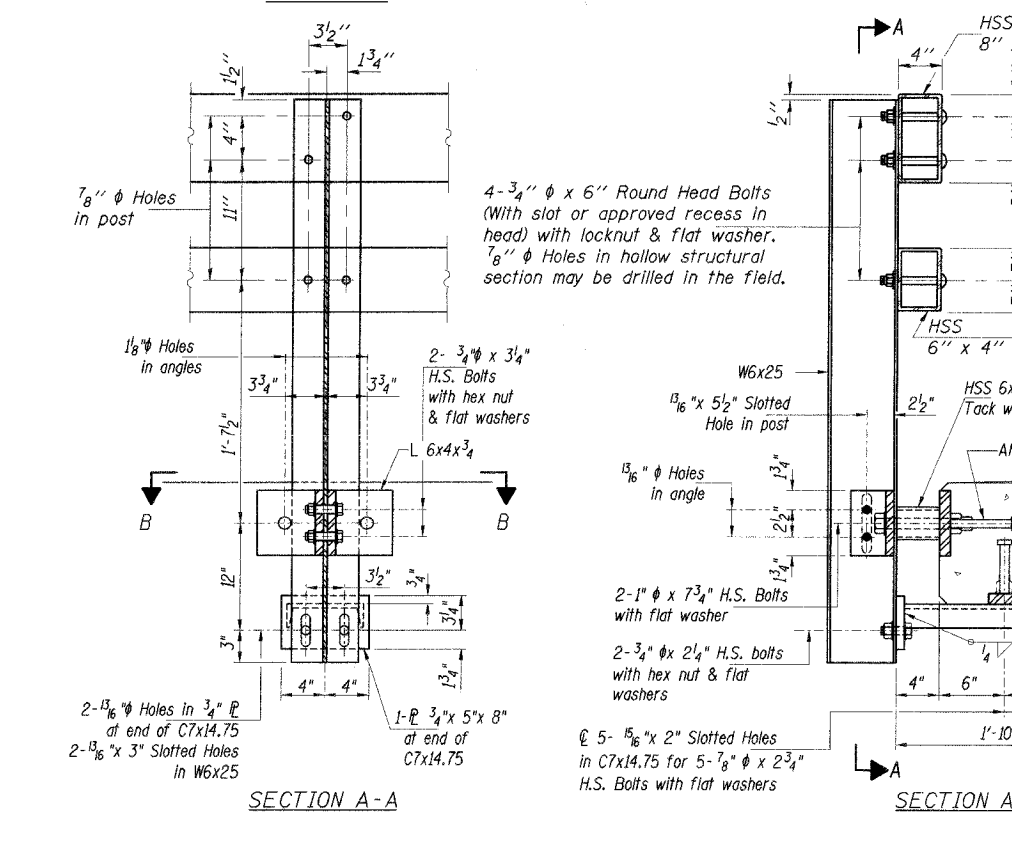
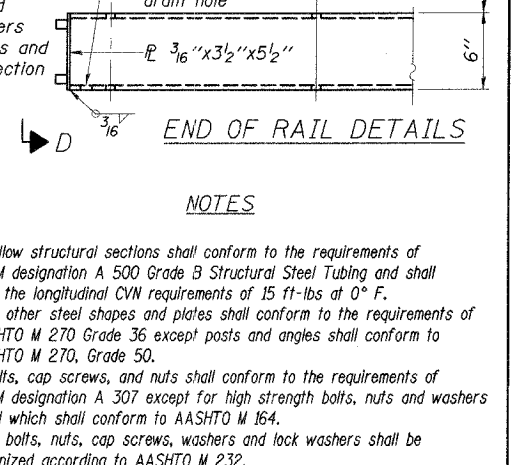
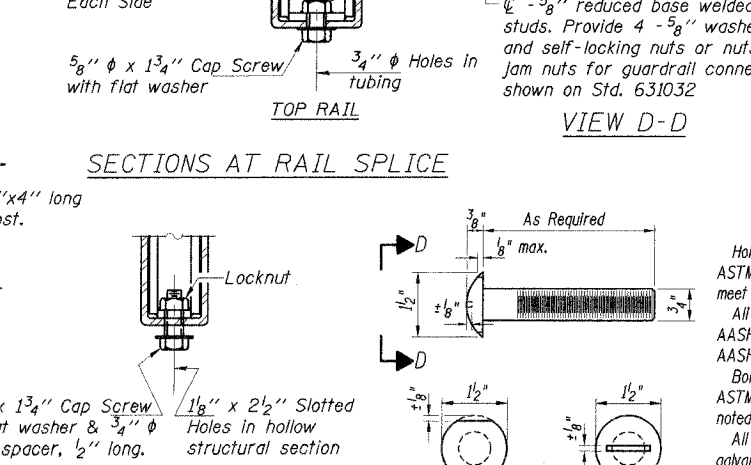
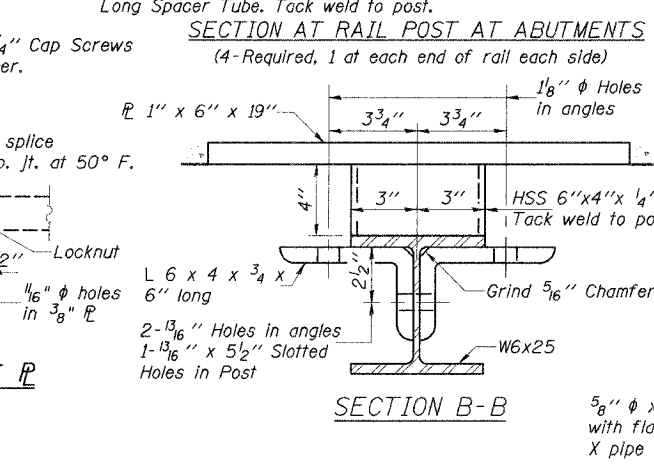
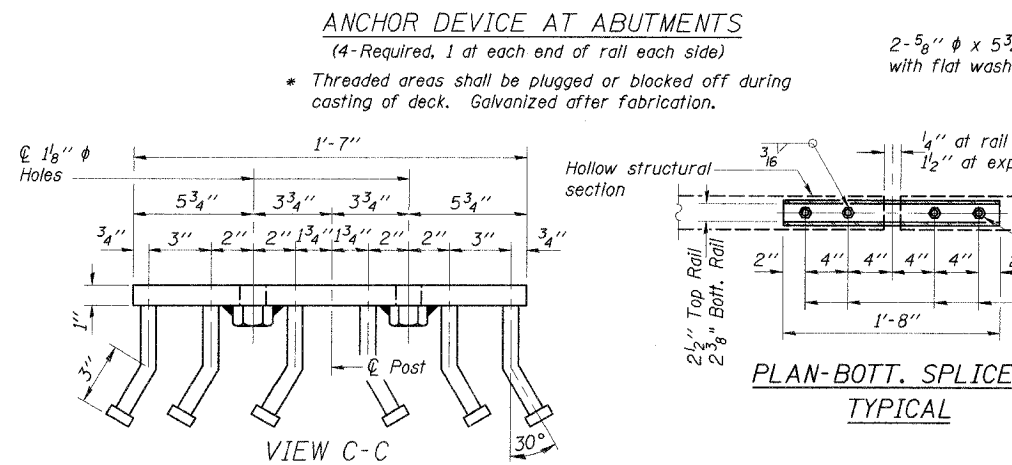
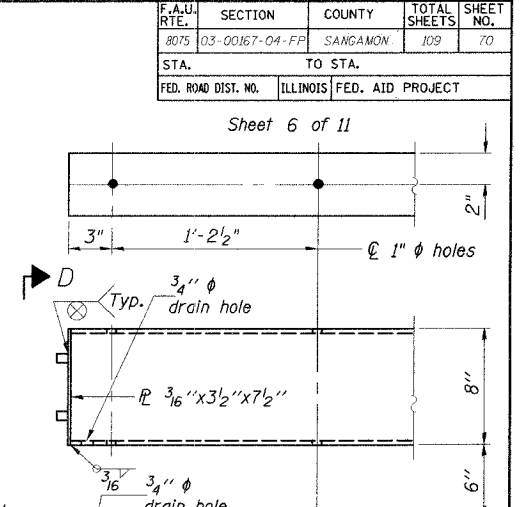
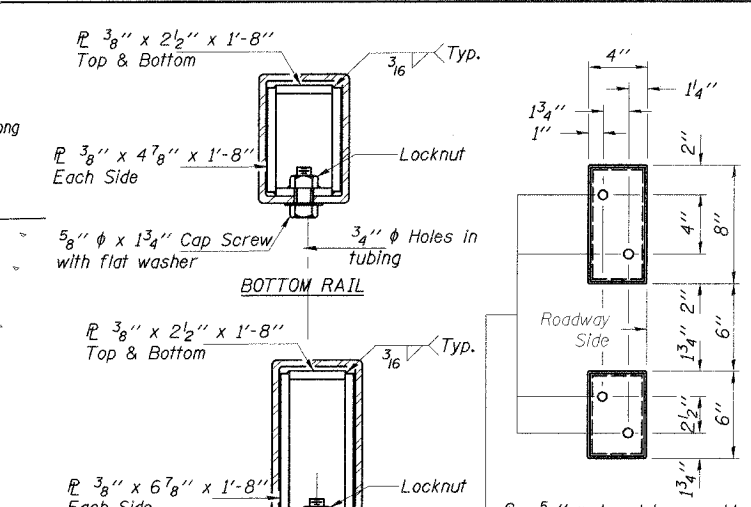
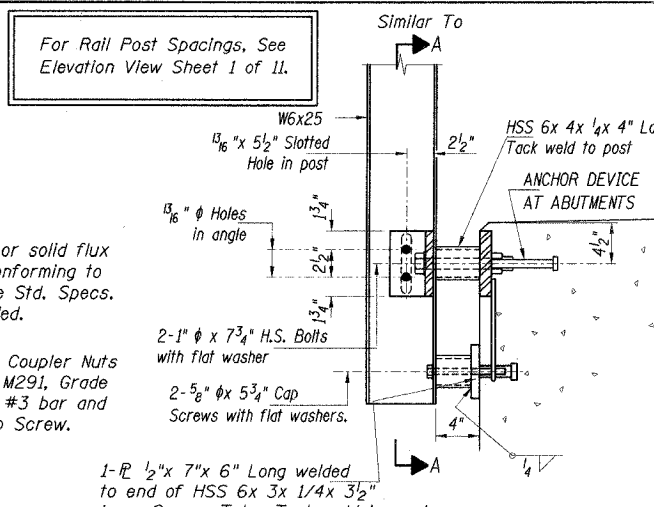
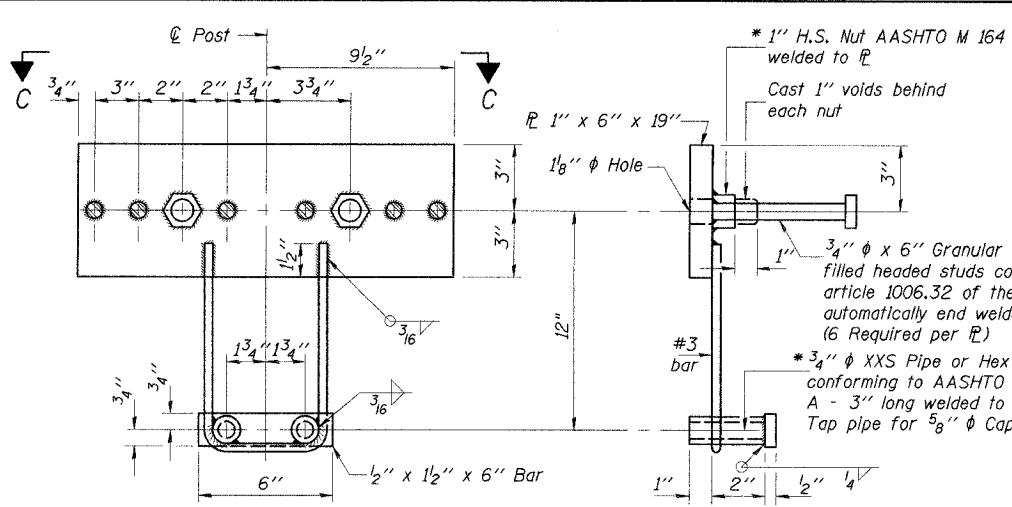


F.A.U. RTEL.	SECTION	COUNTY	TOTAL SHEETS	SHEET NO.
8075	03-00167-04-FP	SANGAMON	109	70
STA.		TO STA.		
FED. ROAD DIST. NO.		ILLINOIS FED. AID PROJECT		



NOTES

Hollow structural sections shall conform to the requirements of ASTM designation A 500 Grade B Structural Steel Tubing and shall meet the longitudinal CVN requirements of 15 ft-lbs at 0° F.

All other steel shapes and plates shall conform to the requirements of AASHTO M 270 Grade 36 except posts and angles shall conform to AASHTO M 270, Grade 50.

Bolts, cap screws, and nuts shall conform to the requirements of ASTM designation A 307 except for high strength bolts, nuts and washers noted which shall conform to AASHTO M 164.

All bolts, nuts, cap screws, washers and lock washers shall be galvanized according to AASHTO M 232.

All posts, railing, rail splices, anchor devices and angles shall be galvanized after shop fabrication according to AASHTO M 111 and ASTM A 385. Galvanized rail shall not be painted.

Railing shall be according to Section 509 of the Standard Specifications, except as noted, and will be paid for at the contract unit price per Foot for Steel Bridge Rail, Type SM (Special).

All field drilled holes shall be coated with an approved zinc rich paint before erection.

The 1/2 inch x 7 inch x 6 inch plates and the web of the C7x14.25 that come in contact with concrete shall receive two coats of asphalt paint conforming to Section 1060.07 Type II or place 1/8 inch fabric bearing pads between the plates or C7x14.25 and the concrete.

The 3/4 inch high strength bolts used to connect the 6 x 4 x 3/4 angles to the post shall be tightened according to Article 505.04(FX2) of the Standard Specifications. The 1 inch high strength bolts connecting the angles to the concrete shall be tightened to a snug fit and given an additional 1/8 turn. The 5/8 inch cap screws in bottom of posts shall be tightened to a snug fit only.

All rail mounting members, hardware and curled end sections shall be included with the unit price for Steel Bridge Rail, Type SM (Special).

BILL OF MATERIAL

Item	Unit	Quantity
Steel Bridge Rail, Type SM (Special)	Foot	160

TYPE SM (SPECIAL) STEEL BRIDGE RAIL SIDE MOUNTED CARDINAL ROAD over BLACK BRANCH CREEK SECTION 03-00167-04-FP SANGAMON COUNTY STATION 484+47 STRUCTURE NO. 084-3640

© Copyright Hanson Professional Services Inc. 2006

HANSON

JOB NO. 03S2035B
DATE 6/21/06

07/27/2006
 20:15 AM
 R:\03\00167-04-FP\Drawings\Rail\Detail\Rail.dwg
 LAYOUT
 DRAWN
 REVIEWED