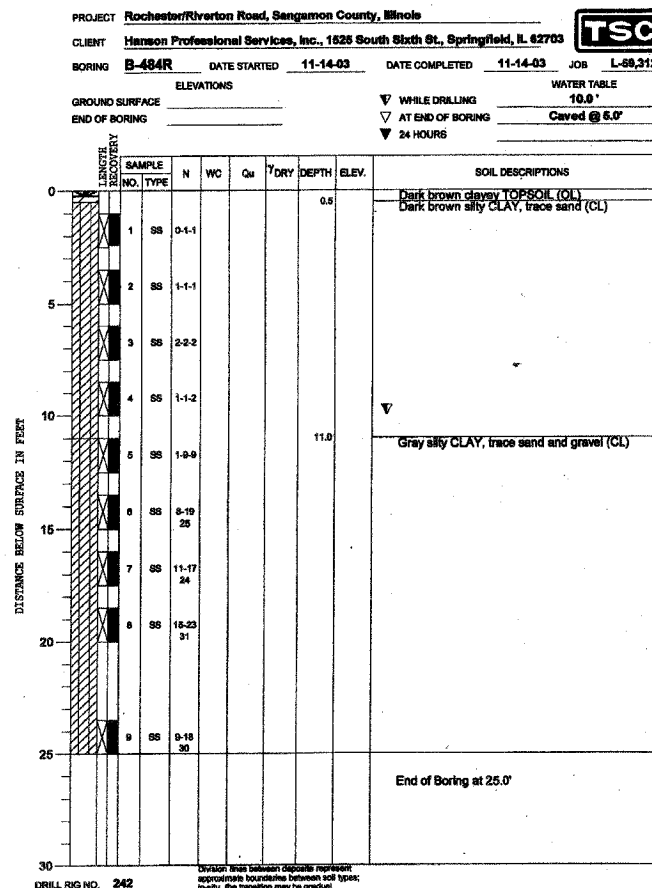
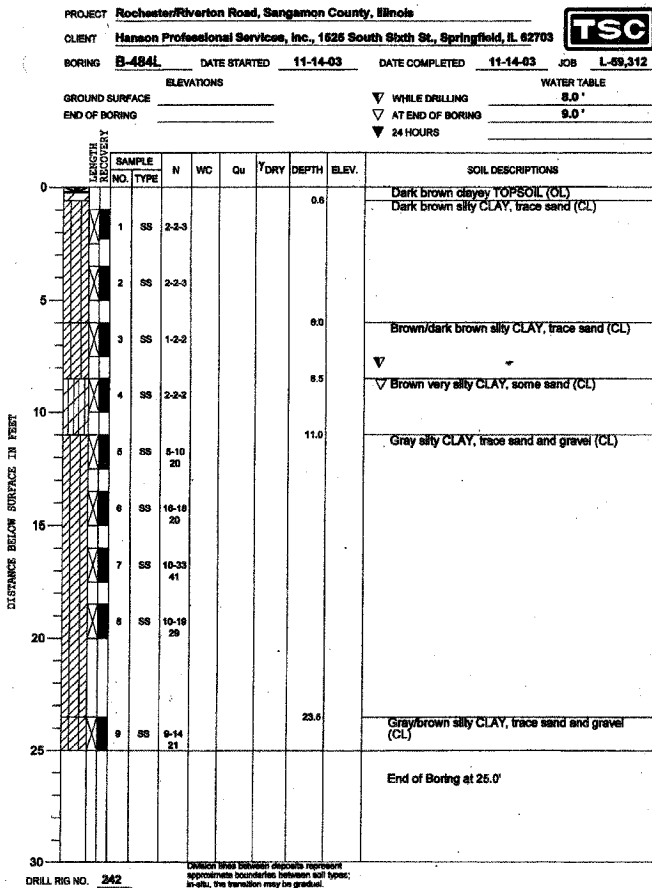
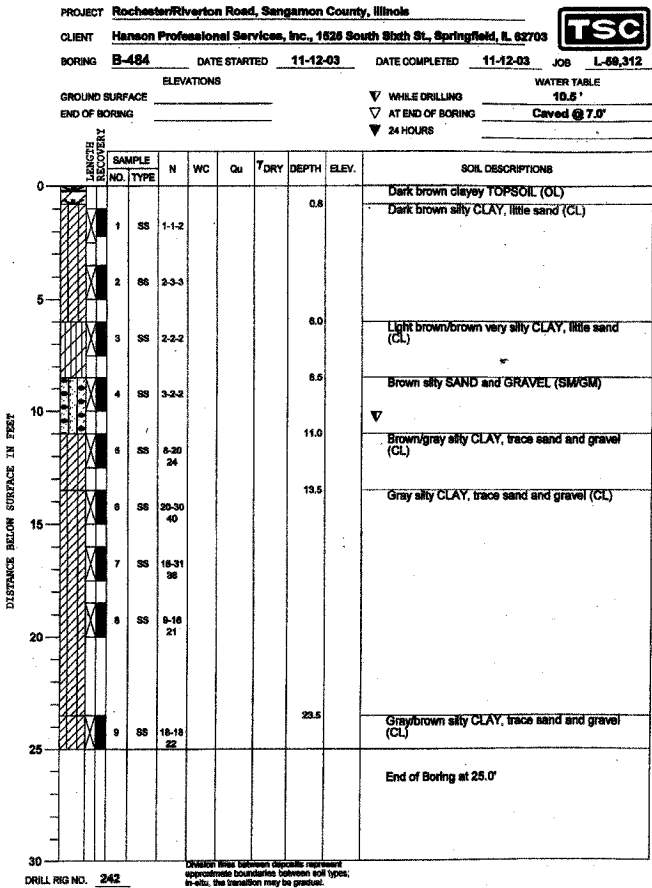


F.A.U. RTE.	SECTION	COUNTY	TOTAL SHEETS	SHEET NO.
8075	03-00167-04-FP	SANGAMON	109	75
STA.		TO STA.		
FED. ROAD DIST. NO.		ILLINOIS	FED. AID PROJECT	

Sheet 11 of 11



KEY TO SYMBOLS AND TERMS
 LABORATORY SOIL TEST DATA

- BOR. — BORING NUMBER
- SAMP. — SAMPLE NUMBER
 - 3 (SPLIT SPOON SAMPLE)
 - 4-2 (SHELBY TUBE SAMPLE)
- DEPTH — DEPTH TO BOTTOM OF SAMPLE. DEPTH MEASURED FROM GROUND SURFACE AT BORING LOCATION.
- ELEV. — ELEVATION OF BOTTOM OF SAMPLE. ELEVATIONS BASED ON SITE DATUM GIVEN IN REPORT.
- N — STANDARD PENETRATION VALUE. DEFINED AS NUMBER OF BLOWS OF 140-LB. HAMMER DROPPED 30 INCHES REQUIRED TO DRIVE 2-IN. O.D. SPLIT SPOON SAMPLER FOR LAST 12 INCHES OF PENETRATION, OR FRACTION THEREOF.
- ROUTINE LABORATORY TESTS
 - Qu — UNCONFINED COMPRESSIVE STRENGTH IN TONS PER SQ. FT. MODE OF FAILURE (M) DESCRIBED AS SHEAR TYPE (SH), BULGE TYPE (B), OR SPLIT TYPE (SF).
 - P — ESTIMATE OF UNCONFINED COMPRESSIVE STRENGTH IN TONS PER SQ. FT. BASED ON CALIBRATED PENETROMETER.
 - W — NATURAL WATER CONTENT AS % OF DRY WEIGHT.
 - γw — WET UNIT WEIGHT IN POUNDS PER CUBIC FT.
 - γd — DRY UNIT WEIGHT IN POUNDS PER CUBIC FT.
- SPECIAL LABORATORY TESTS
 - AL — ATTERBERG LIMITS
 - GS — GRAIN SIZE DISTRIBUTION
 - SG — SPECIFIC GRAVITY
 - OC — ORGANIC CONTENT
 - US — UNRESTRAINED SWELL TEST
 - SP — SWELLING-PRESSURE TEST
 - P — PERMEABILITY TEST
 - C — CONSOLIDATION TEST
 - TS — TRIAXIAL SHEAR TEST
 - DS — DIRECT SHEAR TEST

SAMPLE DESCRIPTION
 SAMPLE DESCRIPTIONS BY VISUAL METHODS. CLASSIFICATIONS ACCORDING TO UNIFIED SYSTEM GIVEN IN PARENTHESES.

01/27/2006 10:52:31 AM
 P:\03\086\03\0303\ENR\Structure\Book Branch Creek\Bridge Plans\Fin\Borings.dwg
 LAYOUT: M.M.M. 3/13/04
 DRAWN: B.C. 3/15/04
 REVIEWED: G.B.P. 3/29/04

SOIL BORINGS
 CARDINAL ROAD over BLACK BRANCH CREEK
 SECTION 03-00167-04-FP
 SANGAMON COUNTY
 STATION 484+47
 STRUCTURE NO. 084-3640

JOB NO. 0352035B
 DATE 6/21/06

© Copyright Hanson Professional Services Inc. 2005