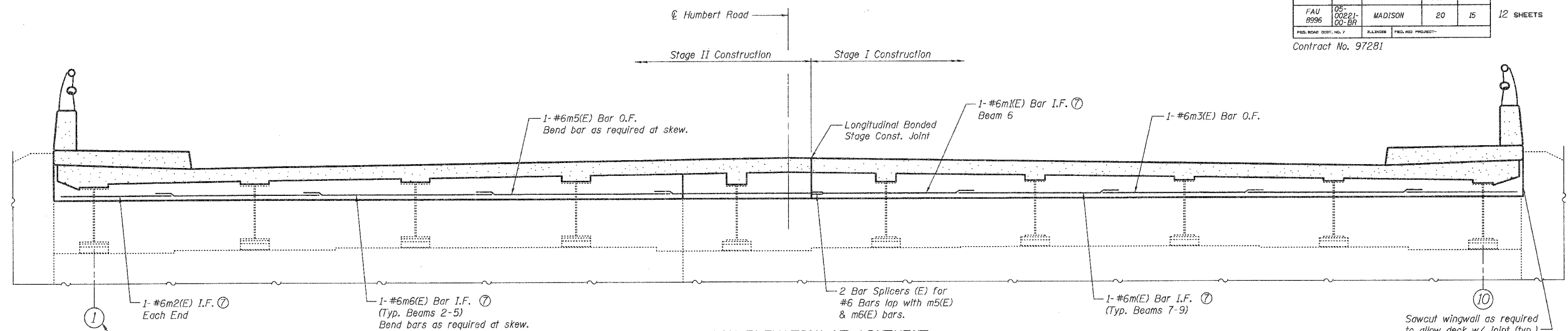
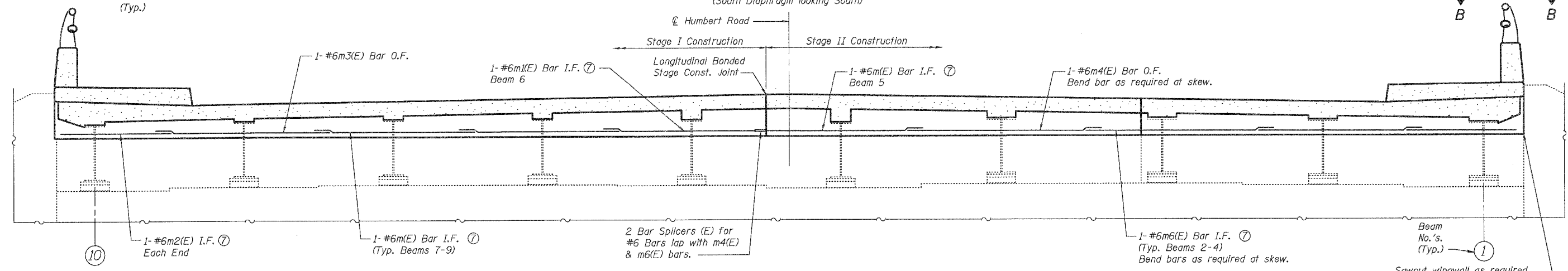


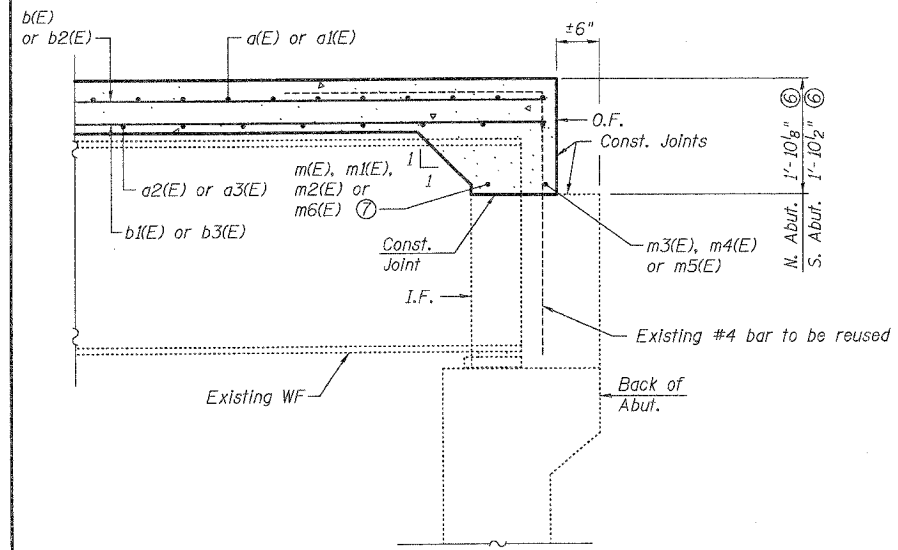
ROUTE NO.	SECTION	COUNTY	SHEET	SHEET NO.
FAU 8996	05-00221-00-BR	MADISON	20 15	12 SHEETS
FED. ROAD DIST. NO. 7		ALIGNMENT	FED. AID PROJECT	
Contract No. 97281				



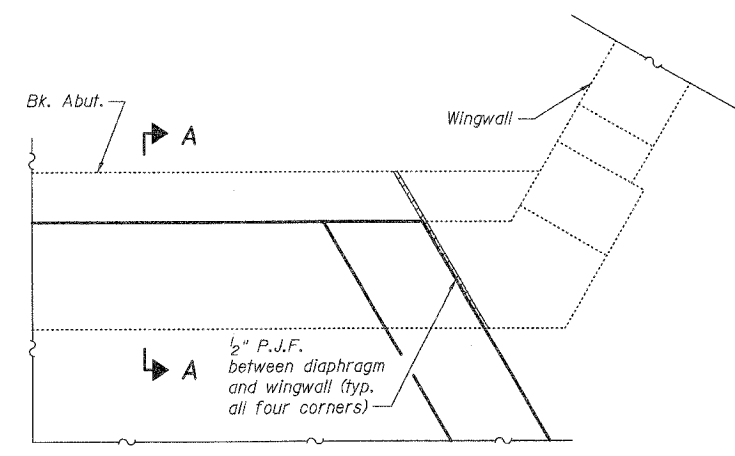
DIAPHRAGM ELEVATION AT ABUTMENT
(South Diaphragm looking South)



DIAPHRAGM ELEVATION AT ABUTMENT
(North Diaphragm looking North)



SECTION A-A AT ABUTMENTS



SECTION B-B
(Parapet Shown)

- Notes:
- ① See sheet 8 of 12 for additional superstructure details, bar bending details, parapet elevations and bill of materials. Concrete in diaphragm is included with Concrete Superstructure.
 - ② See sheet 9 of 12 for shear stud details.
 - ③ See sheet 10 of 12 for bar splicer details.
 - ④ Reinforcement bars designated (E) shall be epoxy coated.
 - ⑤ Existing reinforcement bars shown are to be cleaned and incorporated into new construction.
 - ⑥ Distance is measured at the centerline of the roadway.
 - ⑦ Place m(E), m1(E), m2(E) & m6(E) bars through 1"φ drilled holes in steel beams.
 - ⑧ Minimum bar laps: #6 - 2'-9".

SUPERSTRUCTURE DETAILS
HUMBERT ROAD OVER
BLACK CREEK
SECTION 05-00221-00-BR
CITY OF ALTON
STA. 278+31.50
STRUCTURE NO. 060-3023