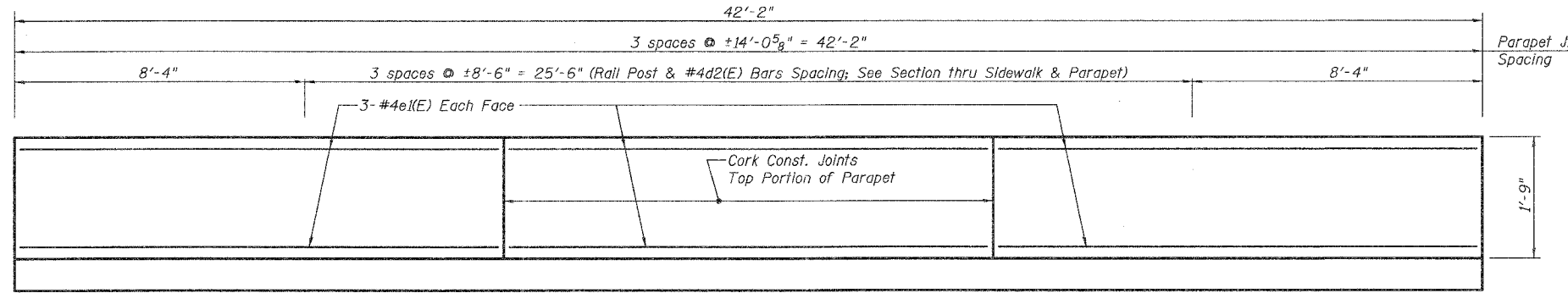
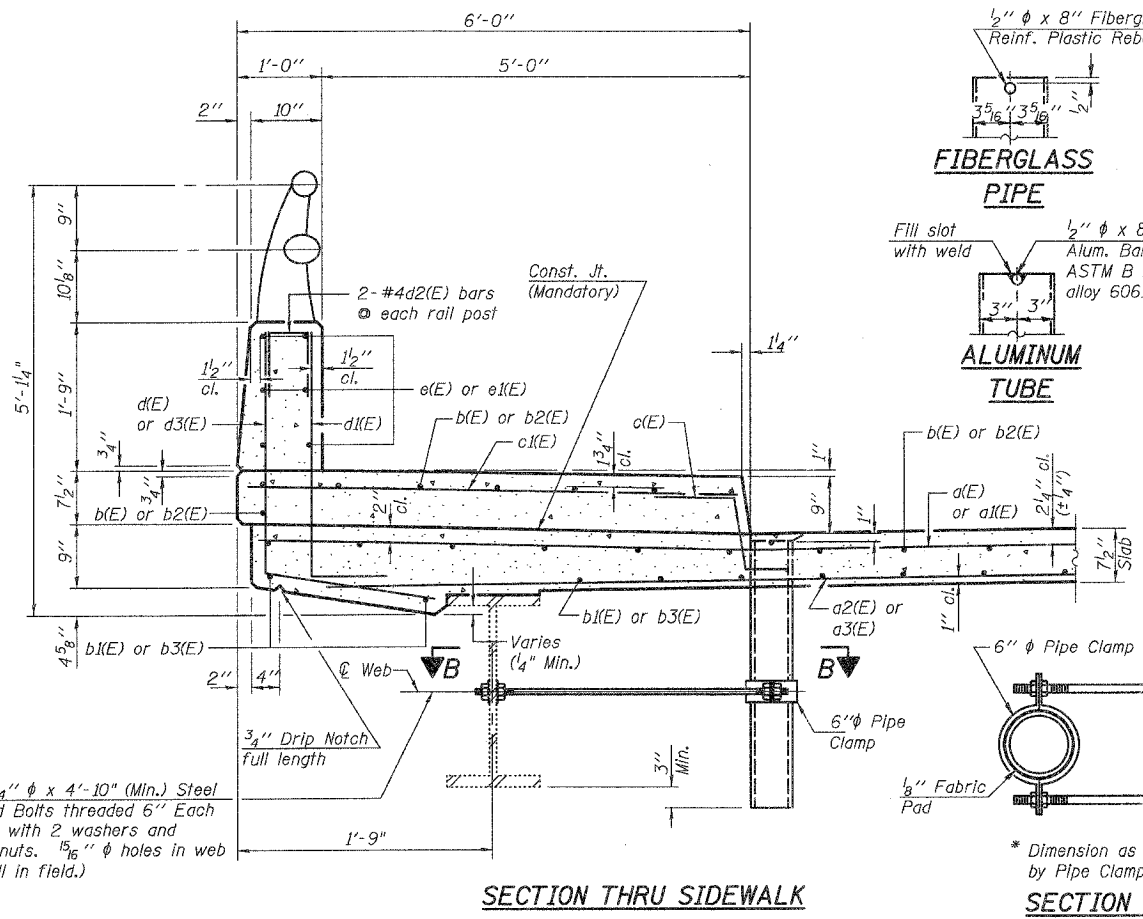


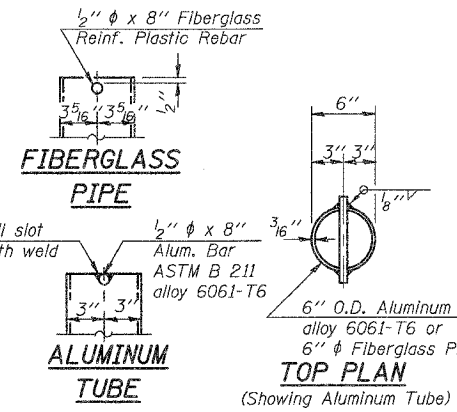
INSIDE ELEVATION OF EAST PARAPET



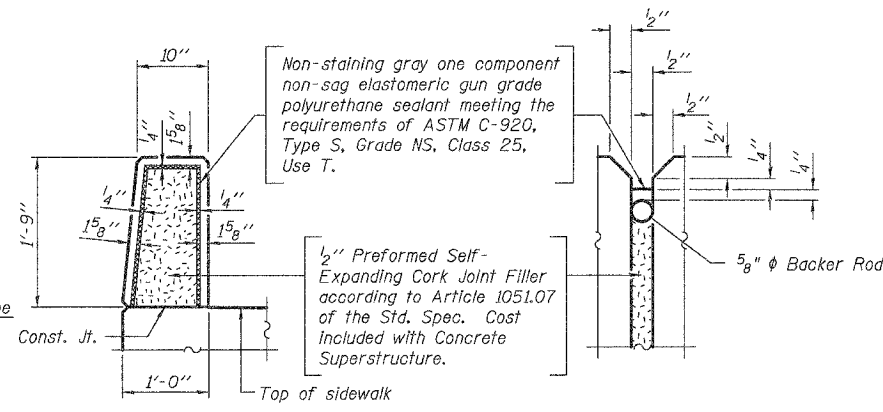
INSIDE ELEVATION OF WEST PARAPET



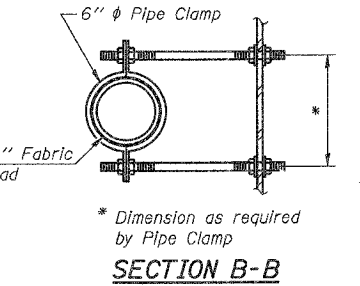
SECTION THRU SIDEWALK



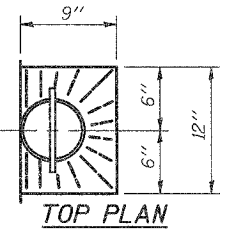
TOP PLAN (Showing Aluminum Tube)



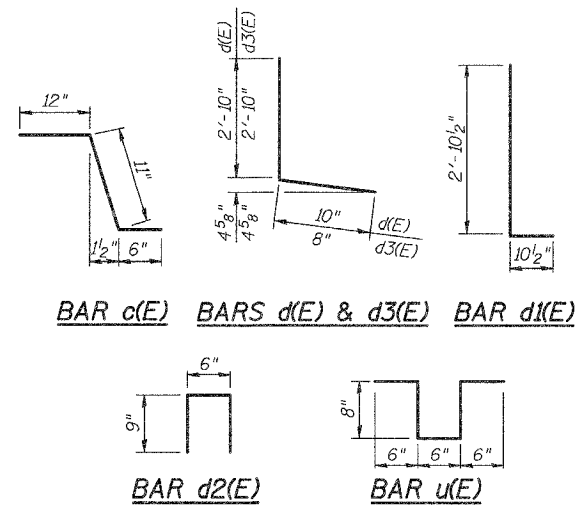
PARAPET JOINT DETAILS



SECTION B-B



TOP PLAN



SUPERSTRUCTURE BILL OF MATERIAL

| Bar | No. | Size | Length | Shape |
|----------------------------------|-----|----------|---------|-------|
| a(E) | 78 | #5 | 30'-6" | — |
| a1(E) | 92 | #5 | 32'-6" | — |
| a2(E) | 57 | #5 | 29'-6" | — |
| a3(E) | 65 | #5 | 32'-0" | — |
| a4(E) | 2 | #5 | 31'-5" | — |
| a5(E) | 2 | #5 | 17'-10" | — |
| b(E) | 45 | #5 | 41'-10" | — |
| b1(E) | 34 | #5 | 41'-10" | — |
| b2(E) | 37 | #5 | 49'-2" | — |
| b3(E) | 35 | #5 | 49'-2" | — |
| c(E) | 93 | #5 | 2'-5" | └ |
| c1(E) | 93 | #5 | 5'-6" | — |
| d(E) | 43 | #4 | 3'-8" | └ |
| d1(E) | 93 | #6 | 3'-9" | └ |
| d2(E) | 18 | #4 | 2'-0" | └ |
| d3(E) | 50 | #4 | 3'-6" | └ |
| e(E) | 18 | #4 | 16'-2" | — |
| e1(E) | 18 | #4 | 13'-8" | — |
| m(E) | 7 | #6 | 9'-3" | — |
| m1(E) | 2 | #6 | 7'-11" | — |
| m2(E) | 4 | #6 | 7'-3" | — |
| m3(E) | 2 | #6 | 30'-8" | — |
| m4(E) | 1 | #6 | 35'-0" | — |
| m5(E) | 1 | #6 | 37'-0" | — |
| m6(E) | 7 | #6 | 10'-10" | — |
| u(E) | 42 | #5 | 2'-10" | └ |
| Reinforcement Bars, Epoxy Coated | | Pound | 19,260 | |
| Concrete Superstructure | | Cu. Yds. | 93.1 | |

- Notes:
- Reinforcement bars designated (E) shall be epoxy coated.
 - E.F. denotes each face. I.F. denotes inside face. O.F. denotes outside face.
 - Concrete superstructure includes concrete in diaphragm.

SUPERSTRUCTURE DETAILS
HUMBERT ROAD OVER
BLACK CREEK
SECTION 05-00221-00-BR
CITY OF ALTON
STA. 278+31.50
STRUCTURE NO. 060-3023