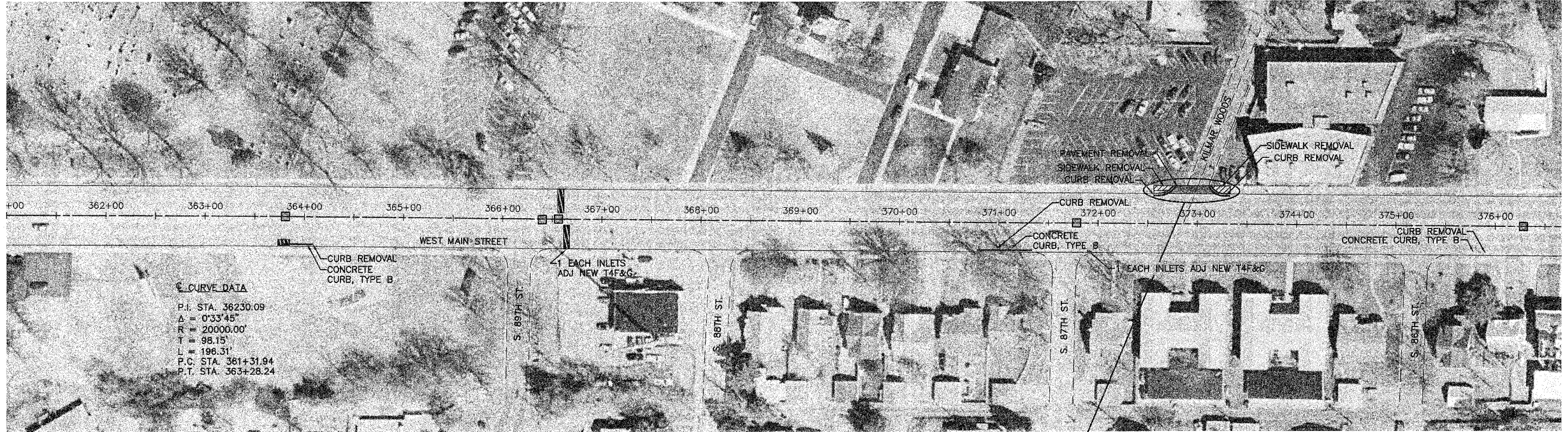


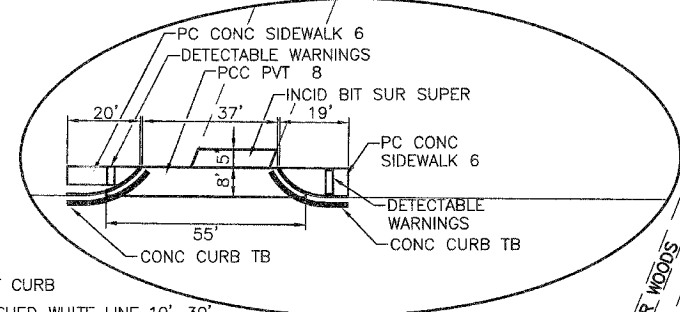
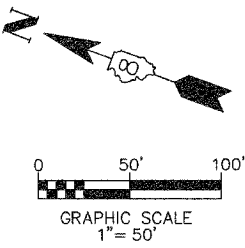
PLAN VIEW

F.A.U. RTE.	SECTION	COUNTY	TOTAL SHEETS	SHEET NO.
9182	03-00176-03-RS	ST. CLAIR	14	9
STA.	361+50	TO STA.	376+50	
FED. ROAD DIST. NO.	ILLINOIS	WEST MAIN STREET		
PLAN VIEW AND PAVEMENT MARKING SHEET				

CONTRACT NO. 97284

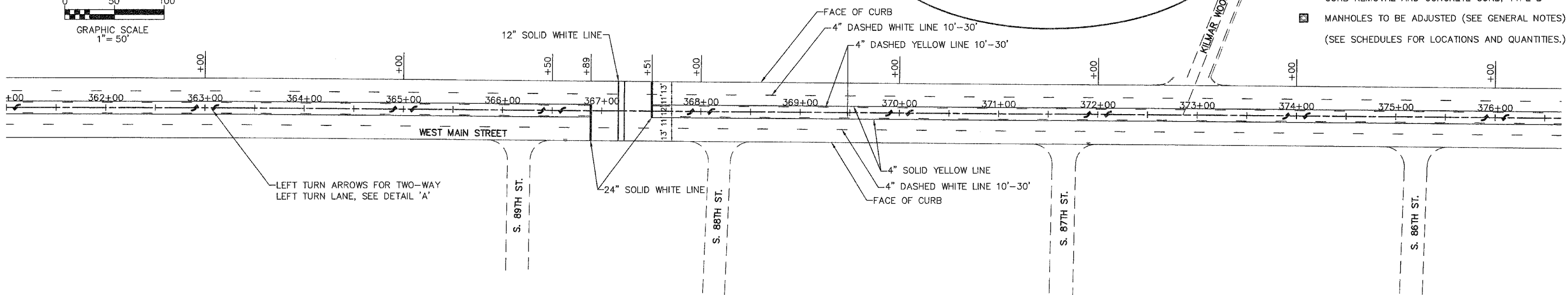


CURVE DATA
 P.I. STA. 36230.09
 $\Delta = 0^{\circ}33'45''$
 $R = 20000.00'$
 $T = 98.15'$
 $L = 196.31'$
 P.C. STA. 361+31.94
 P.T. STA. 363+28.24



LEGEND

- SIDEWALK REMOVAL
- PAVEMENT REMOVAL
- PAVEMENT PATCHES—SEE SCHEDULE FOR TYPE AND CLASS
- BITUMINOUS SURFACE REMOVAL 1 1/2" AND INCIDENTAL BITUMINOUS SURFACING
- CURB REMOVAL AND CONCRETE CURB, TYPE B
- MANHOLES TO BE ADJUSTED (SEE GENERAL NOTES) (SEE SCHEDULES FOR LOCATIONS AND QUANTITIES.)



PAVEMENT MARKING PLAN

WEST MAIN STREET

BY	DATE
FINAL SURVEYED	
SURVEY PLOTTED	
NOTE BOOK TEMPLATE	
AREAS CHECKED	
NO.	

BY	DATE
ORIGINAL SURVEYED	
SURVEY PLOTTED	
NOTE BOOK TEMPLATE	
AREAS CHECKED	
NO.	