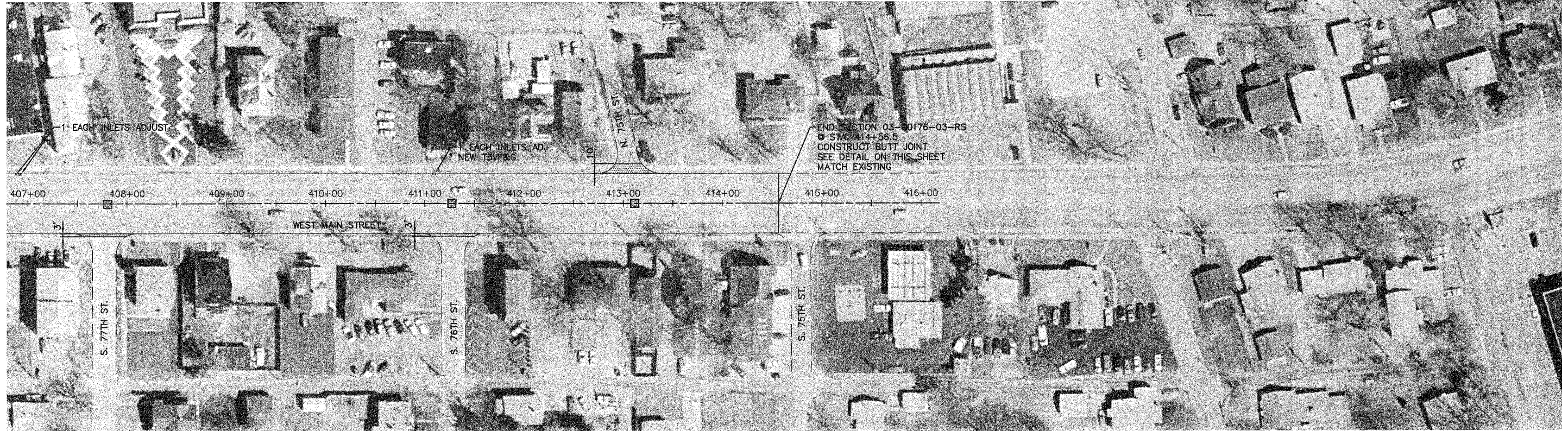


PLAN VIEW

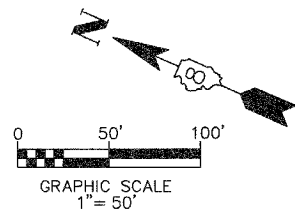
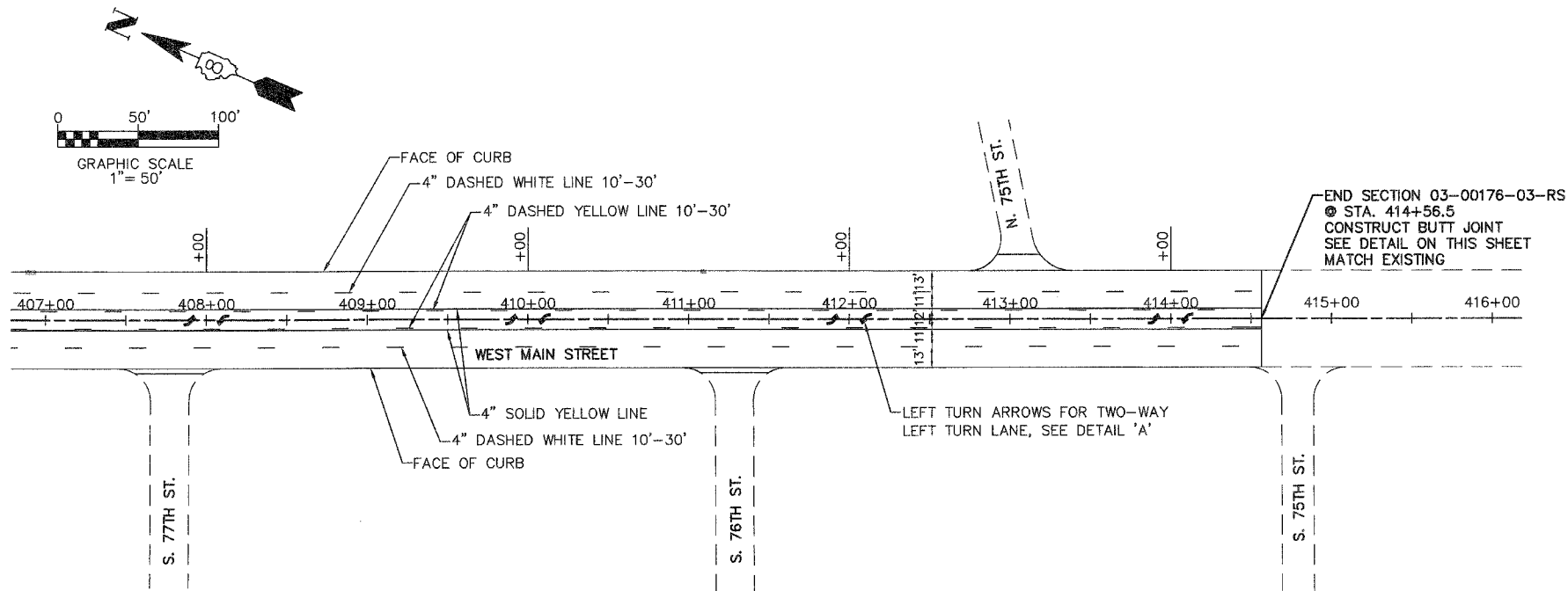
F.A.U. RTE.	SECTION	COUNTY	TOTAL SHEETS	SHEET NO.
9182	03-00176-03-RS	ST. CLAIR	14	12
STA.	406+50	TO STA.	414+56.5	
FED. ROAD DIST. NO.	ILLINOIS	WEST MAIN STREET		

CONTRACT NO. 97284



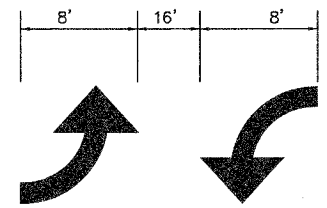
BY	DATE
FINAL SURVEYED	
SURVEY PLOTTED	
NOTE BOOK TEMPLATE	
AREAS CHECKED	
NO.	

BY	DATE
ORIGINAL SURVEYED	
SURVEY PLOTTED	
NOTE BOOK TEMPLATE	
AREAS CHECKED	
NO.	

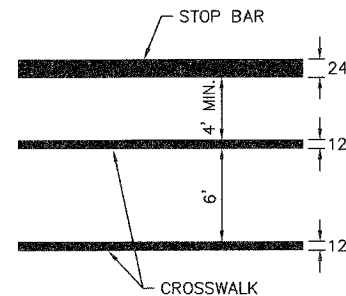


LEGEND

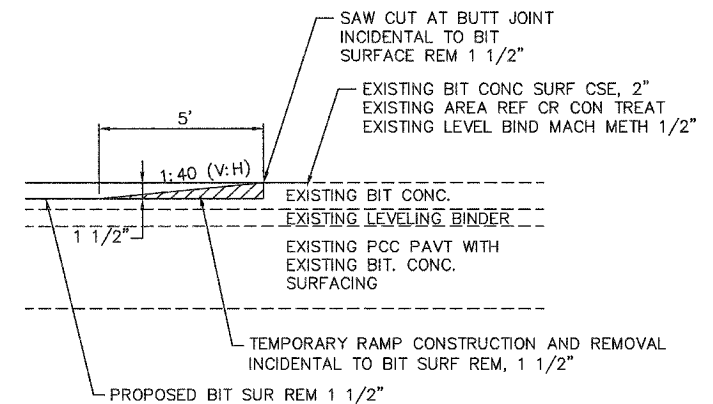
- SIDEWALK REMOVAL
- PAVEMENT REMOVAL
- PAVEMENT PATCHES--SEE SCHEDULE FOR TYPE AND CLASS
- BITUMINOUS SURFACE REMOVAL 1 1/2" AND INCIDENTAL BITUMINOUS SURFACING
- CURB REMOVAL AND CONCRETE CURB, TYPE B
- MANHOLES TO BE ADJUSTED (SEE GENERAL NOTES)  
(SEE SCHEDULES FOR LOCATIONS AND QUANTITIES.)



DETAIL 'A'  
(NOT TO SCALE)



DETAIL 'B'  
(NOT TO SCALE)



BUTT JOINT DETAIL  
(NOT TO SCALE)

PAVEMENT MARKING PLAN