

STATE OF ILLINOIS  
DEPARTMENT OF TRANSPORTATION  
**PLANS FOR PROPOSED**  
FAU RTE 9182  
WEST MAIN STREET RESURFACING, PHASE 4  
SECTION: 03-00176-03-RS  
PROJECT: M-5011 (221)  
JOB NO: C-98-375-06  
CITY OF BELLEVILLE  
ST. CLAIR COUNTY

F.A.U. RTE.	SECTION	COUNTY	TOTAL SHEETS	SHEET NO.
9182	03-00176-03-RS	ST. CLAIR	14	1
STA.		TO STA.		
FED. ROAD DIST. NO.		ILLINOIS	WEST MAIN STREET	
FEDERAL AID PROJECT				

CONTRACT NO. 97284

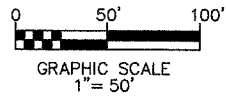
INDEX OF SHEETS

SHEET NO.	ITEM
1	COVER SHEET
2	SUMMARY OF QUANTITIES & GENERAL NOTES
3	TYPICAL SECTIONS
4	SCHEDULES
5-12	PLAN & PAVEMENT MARKING SHEETS
13	ENTRANCE SCHEDULE & DETAILS
14	TRAFFIC SIGNAL PLANS

STANDARDS

000001-04	701311-02
420001-06	701601-04
424001-04	701602-02
442101-05	701701-04
442201-01	701801-03
604011-02	702001-06
604016-01	780001-01
606001-02	781001-02
606301-02	886001
701301-02	886006

MICROFILMED \_\_\_\_\_  
REEL NUMBER \_\_\_\_\_  
AWARDED \_\_\_\_\_  
RESIDENT ENGINEER \_\_\_\_\_



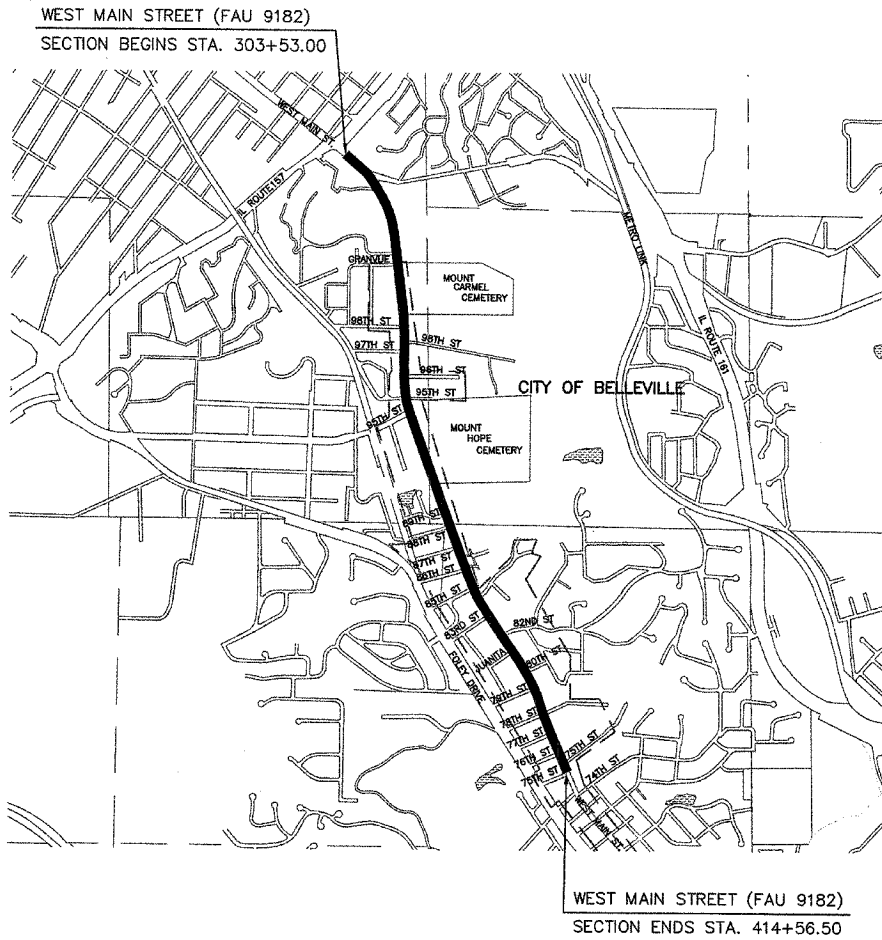
FULL SIZE PLANS HAVE BEEN PREPARED USING STANDARD ENGINEERING SCALES. REDUCED SIZED PLANS WILL NOT CONFORM TO STANDARD SCALES. IN MAKING MEASUREMENTS ON REDUCED PLANS, THE ABOVE SCALES MAY BE USED.

JOINT UTILITY LOCATING INFORMATION FOR EXCAVATIONS PHONE: 800-892-0123

CONTRACT NO. 97284

FAU ROUTE 9182  
DESIGN CLASSIFICATION = URBAN MINOR ARTERIAL (TS-2)  
DESIGN SPEED = 35 MPH  
CURRENT TRAFFIC (2006) = 10,560 A.D.T.  
DESIGN YEAR TRAFFIC (2026) = 11,660 A.D.T.

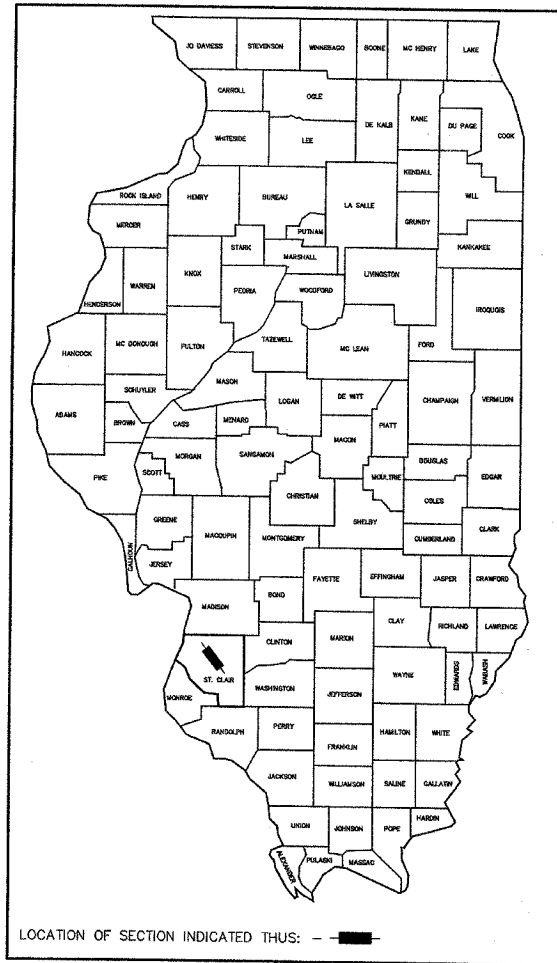
SCALE IN FEET  
PLAN 1" = 50'



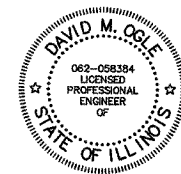
LOCATION MAP

SCALE 1" = 1,500'

NET LENGTH OF PROJECT = 11,103.5 FEET (2.103 MILES)



LOCATION OF SECTION INDICATED THUS: ———



EXPIRES 11/30/07

APPROVED May 25, 2006  
Mark W. Eckert  
MARK W. ECKERT MAYOR OF BELLEVILLE

STATE OF ILLINOIS  
DEPARTMENT OF TRANSPORTATION  
DIVISION OF HIGHWAYS

SUBMITTED 7-7 2006  
Center O'Brien  
DISTRICT ENGINEER OF LOCAL ROADS & STREETS

PASSED July 7 2006  
Mary C. Lame  
MARY C. LAMIE, P.E. DEPUTY DIRECTOR OF HIGHWAYS REGION FIVE ENGINEER

DMS  
DAVID M. OGLE  
P.E. NO. 062-058384

DATE: 5/22/06

OATES ASSOCIATES  
Consulting Engineers

**GENERAL NOTES**

- THE ILLINOIS DEPARTMENT OF TRANSPORTATION (IDOT) HIGHWAY STANDARDS WITH THE REVISION NUMBER LISTED ON THE COVER SHEET OF THE PLANS SHALL APPLY TO THIS PROJECT.
- UNDERGROUND FACILITIES, STRUCTURES AND UTILITIES HAVE BEEN PLOTTED FROM AVAILABLE SURVEYS AND RECORDS. THEIR LOCATIONS MUST BE CONSIDERED TO BE APPROXIMATE ONLY. IT IS POSSIBLE THERE MAY BE OTHERS, THE EXISTENCE OF WHICH IS NOT PRESENTLY KNOWN OR SHOWN. IT IS THE CONTRACTOR'S RESPONSIBILITY TO DETERMINE THEIR EXISTENCE AND EXACT LOCATION AND TO AVOID DAMAGE THERETO. ILLINOIS LAW REQUIRES A MINIMUM 48-HOUR NOTICE TO ALL UTILITY COMPANIES BEFORE DIGGING. FIELD LOCATIONS OF UNDERGROUND FACILITIES MAY BE OBTAINED BY CALLING THE J.U.L.I.E. SYSTEM AT 800-892-0123 AND PROVIDING 48 HOURS ADVANCE NOTICE. NON-J.U.L.I.E. MEMBERS MAY BE CONTACTED DIRECT. AGENCIES KNOWN TO HAVE FACILITIES WITHIN THE PROJECT LIMITS ARE LISTED BELOW.
 

ATT (TELEPHONE) 203 GOETHE STREET COLLINSVILLE, IL 62234 (618) 346-6400	ILLINOIS AMERICAN WATER CO. (WATER) 100 NORTH WATERWORKS DRIVE BELLEVILLE, IL 62223 (618) 277-7450
CHARTER COMMUNICATIONS (CABLE TV) 317 WEST MAIN STREET BELLEVILLE, IL 62220 (618) 277-2288	AMERENIP (GAS & ELECTRIC) 1050 WEST BOULEVARD BELLEVILLE, IL 62221 (618) 234-3400
CITY OF BELLEVILLE (SEWER) 450 ENVIRONMENTAL DRIVE BELLEVILLE, IL 62220 (618) 233-7146	McLEOD USA (FIBER OPTIC COMMUNICATIONS) 102 EAST SHAFER STREET FORSYTHE, IL 63525
- ANY FACILITIES OR APPURTENANCES WHICH ARE THE PROPERTY OF ANY PUBLIC UTILITY LOCATED WITHIN THE LIMITS OF CONSTRUCTION SHALL BE RELOCATED OR ADJUSTED BY THEIR RESPECTIVE OWNERS. THE CONTRACTOR SHALL NOTIFY AND COOPERATE WITH THE OWNERS OF ANY SUCH FACILITY IN THEIR REMOVAL AND REARRANGEMENT OPERATIONS IN ORDER THAT THESE OPERATIONS AND THE CONSTRUCTION OF THIS PROJECT MAY PROGRESS IN A REASONABLE MANNER. ALL ROADSIDE OBJECTS (UTILITY POLES, FIRE HYDRANTS, SIGNS, ETC.) SHALL BE RELOCATED TO PROVIDE A MINIMUM OF 2 FEET CLEARANCE, MEASURED FROM THE FACE OF CURB TO THE NEAR EDGE OF THE OBJECT.
- THE FOLLOWING UTILITY COMPANIES MAY HAVE FACILITIES LOCATED WITHIN THE LIMITS OF CONSTRUCTION WHICH MAY REQUIRE ADJUSTMENT, RELOCATION OR REMOVAL. ALL ARE MEMBERS OF J.U.L.I.E., UNLESS NOTED OTHERWISE.
 

ATT (TELEPHONE) 203 GOETHE STREET COLLINSVILLE, IL 62234 (618) 346-6400	ILLINOIS AMERICAN WATER CO. (WATER) 100 NORTH WATERWORKS DRIVE BELLEVILLE, IL 62223 (618) 277-7450
CHARTER COMMUNICATIONS (CABLE TV) 317 WEST MAIN STREET BELLEVILLE, IL 62220 (618) 277-2288	AMERENIP (GAS & ELECTRIC) 1050 WEST BOULEVARD BELLEVILLE, IL 62221 (618) 234-3400
CITY OF BELLEVILLE (SEWER) 450 ENVIRONMENTAL DRIVE BELLEVILLE, IL 62220 (618) 233-7146	McLEOD USA (FIBER OPTIC COMMUNICATIONS) 102 EAST SHAFER STREET FORSYTHE, IL 63525
- THE ABOVE INFORMATION REPRESENTS THE BEST INFORMATION AVAILABLE TO THE LOCAL AGENCY AND IS ONLY INCLUDED FOR THE CONVENIENCE OF THE BIDDER. IT IS UNDERSTOOD AND AGREED THAT THE CONTRACTOR HAS TAKEN THE FOREGOING INTO CONSIDERATION IN PREPARING HIS/HER BID, AND NO ADDITIONAL COMPENSATION WILL BE ALLOWED FOR ANY DELAYS OR INCONVENIENCE CAUSED BY SAME.
- THE CONTRACTOR SHALL REMOVE, MAINTAIN IN A TEMPORARY LOCATION, AND PERMANENTLY RESET ALL MAILBOXES, TRAFFIC SIGNS, STREET NAME SIGNS AND ALL PRIVATE AND COMMERCIAL SIGNS WHICH INTERFERE WITH CONSTRUCTION OPERATIONS IN ACCORDANCE WITH ARTICLES 107.20 AND 107.25 OF THE "STANDARD SPECIFICATIONS FOR ROAD AND BRIDGE CONSTRUCTION" AND AS DIRECTED BY THE ENGINEER. THE COST OF THIS WORK WILL NOT BE PAID FOR SEPARATELY, BUT SHALL BE CONSIDERED AS INCLUDED IN THE UNIT BID PRICES OF THE CONTRACT. SIGNS DAMAGED DUE TO CONTRACTOR NEGLIGENCE SHALL BE REPLACED AT CONTRACTOR'S EXPENSE.
- THE CONTRACTOR SHALL PROVIDE 1' X 1' BLOCKOUTS IN THE PROPOSED SIDEWALK FOR PLACEMENT OF SIGN POSTS AS DIRECTED BY THE ENGINEER.
- THE CONTRACTOR SHALL PROTECT AND CAREFULLY PRESERVE ALL PROPERTY MARKERS AND MONUMENTS UNTIL THE OWNER AND AN AUTHORIZED SURVEYOR, OR AGENT, HAS WITNESSED OR OTHERWISE REFERENCED THEIR LOCATION.
- THE CONTRACTOR SHALL VERIFY ALL DIMENSIONS AND CONDITIONS IN THE FIELD PRIOR TO ORDERING MATERIALS AND COMMENCING CONSTRUCTION.
- THE CONTRACTOR SHALL STAGE ALL WORK IN SUCH A WAY AS TO MAINTAIN INGRESS AND EGRESS TO ALL ABUTTING PROPERTIES AT ALL TIMES DURING CONSTRUCTION.
- THE CONTRACTOR SHALL CONFINE ALL OPERATIONS TO THE AREA LOCATED WITHIN THE EXISTING RIGHT OF WAY. ANY AREA DISTURBED BEYOND THESE LIMITS SHALL BE RESTORED TO ITS ORIGINAL CONDITION AT THE CONTRACTOR'S EXPENSE.
- THE CONTRACTOR SHALL FERTILIZE, SEED AND MULCH ALL EARTH SURFACES DISTURBED BY CONSTRUCTION.
- ANY EXCAVATION OR DROP-OFF 3' OR GREATER SHALL BE PROTECTED WITH EXTENDED LEG BARRICADES AND STEADY BURNING LIGHTS.
- ANY UNSUITABLE MATERIAL ENCOUNTERED DURING CONSTRUCTION SHALL BE REMOVED BY THE CONTRACTOR AND REPLACED WITH SUITABLE MATERIAL AS APPROVED BY THE ENGINEER.
- WHEN THE MILLING OPERATION COMMENCES, "ROUGH GROOVED SURFACE" (W8-1106-(0)-48) SIGNS SHALL BE PLACED BY THE CONTRACTOR AT EACH END OF THE SECTION, AND EACH INTERSECTING SIDE ROAD. THE COST OF THIS WORK WILL NOT BE PAID FOR SEPARATELY, BUT SHALL BE CONSIDERED AS INCLUDED IN THE UNIT BID PRICES OF THE VARIOUS ITEMS OF "BITUMINOUS SURFACE REMOVAL."
- THE CONTRACTOR SHALL NOTE THE LOCATION OF ALL MANHOLE AND VALVE VAULT FRAMES AND LIDS LOCATED WITHIN THE RESURFACING LIMITS. APPROPRIATE CARE SHALL BE TAKEN TO PROTECT THESE ITEMS DURING MILLING OPERATIONS.
- THE THICKNESS OF THE BITUMINOUS MIXTURES SHOWN ON THE PLANS IS THE NOMINAL THICKNESS. DEVIATIONS FROM THE NOMINAL THICKNESS WILL BE PERMITTED WHEN SUCH DEVIATIONS OCCUR DUE TO IRREGULARITIES IN THE EXISTING SURFACE OR BASE ON WHICH THE BITUMINOUS MIXTURES ARE PLACED.
- BITUMINOUS SURFACE COURSE CONSTRUCTION IS TO PROVIDE A NEAT, SMOOTH TRANSITION BETWEEN NEW CONSTRUCTION AND EXISTING PAVEMENTS, AND TO PROVIDE SLOPE TO EXISTING DRAINAGE STRUCTURES. THIS MAY NECESSITATE HAND WORK AND FEATHEREDGING, ALL AS DIRECTED BY THE ENGINEER. THE COST OF THIS WORK IS TO BE INCLUDED IN THE UNIT PRICE OF POLYMERIZED BITUMINOUS SURFACE COURSE, SUPERPAVE, MIXTURE D, N70 AND NO ADDITIONAL COMPENSTATION WILL BE ALLOWED.

- THE CONTRACTOR SHALL USE HIGH EARLY STRENGTH CONCRETE MIX FOR ALL PCC PATCHING.
- THE CONTRACTOR SHALL COMPLETE ALL PAVEMENT PATCHING PRIOR TO BITUMINOUS SURFACE REMOVAL.
- FULL DEPTH SAW CUTTING ON ALL EDGES FOR REMOVAL ITEMS SHALL BE INCLUDED IN THE COST OF THE REMOVAL ITEM AS INDICATED AND IN ACCORDANCE WITH SECTION 440 OF THE "STANDARD SPECIFICATIONS FOR ROAD AND BRIDGE CONSTRUCTION."
- ALL DRIVES AND ENTRANCES ARE AT 90 DEGREE ANGLES TO PROPOSED BASELINE UNLESS OTHERWISE NOTED.
- ALL EXISTING ROADWAY FEATURES SUCH AS PAVEMENT, CURB, SIDEWALK, DRIVEWAY PAVEMENT, CULVERTS, HEADWALLS, RIPRAP, FENCING, RETAINING WALLS, ETC. THAT INTERFERE WITH THE PROPOSED CONSTRUCTION SHALL BE REMOVED BY THE CONTRACTOR UNLESS NOTED OTHERWISE ON THE PLANS. ALL MISCELLANEOUS FEATURES, WHICH ARE TO BE REMOVED AND FOR WHICH THERE IS NO SPECIFIC PAY ITEM, WILL NOT BE MEASURED SEPARATELY FOR PAYMENT. THE COST OF THIS REMOVAL WORK SHALL BE INCLUDED IN THE UNIT COST FOR THE VARIOUS REMOVAL ITEMS.
- ALL TYPE 3 FRAMES AND GRATES SHALL BE FURNISHED BY THE CONTRACTOR WITH TYPE 3V GRATES AND OPEN CURB BOXES. SEE HIGHWAY STANDARD 604011 AND THE SPECIAL PROVISIONS FOR DETAILS.
- ALL WORK ASSOCIATED WITH THIS PROJECT SHALL CONFORM TO THE "AMERICANS WITH DISABILITIES ACT." CROSS SLOPES ON ALL SIDEWALKS, SIDEWALK RAMPS AND DRIVEWAYS SHALL BE 2% MAXIMUM. RAMP LONGITUDINAL SLOPES SHALL NOT EXCEED 8%.
- HANDICAP RAMPS SHALL BE CONSTRUCTED IN ACCORDANCE WITH HIGHWAY STANDARD 424001 AT ALL INTERSECTIONS WHERE NEW CURB AND SIDEWALK ARE PROPOSED. THE COST OF THIS WORK SHALL BE MEASURED AND PAID FOR AS PORTLAND CEMENT CONCRETE SIDEWALK 6 INCH AND DETECTABLE WARNINGS.
- ALL DRAINAGE STRUCTURES CONSTRUCTED, ADJUSTED OR RECONSTRUCTED UNDER THE CONTRACT, SHALL BE CLEANED OF ANY ACCUMULATION OF SILT, DEBRIS OR FOREIGN MATTER AT THE END OF EACH WORKING DAY AND AT THE TIME OF FINAL INSPECTION. THE COST OF THIS WORK WILL NOT BE PAID FOR SEPARATELY, BUT SHALL BE CONSIDERED AS INCLUDED IN THE UNIT BID PRICES OF THE VARIOUS DRAINAGE STRUCTURE ITEMS IN THE CONTRACT.
- THE CONTRACTOR SHALL APPLY SHORT-TERM PAVEMENT MARKINGS TO THE MILLED, PRIMED, AND EACH BITUMINOUS SURFACE LAYER. A QUANTITY FOR TEMPORARY PAVEMENT MARKING EQUAL TO THE AMOUNT OF PERMANENT PAVEMENT MARKING TIMES THE NUMBER OF REQUIRED APPLICATIONS HAS BEEN INCLUDED IN THE PLANS. ONLY THE REMOVAL OF TAPE FROM THE FINAL SURFACE SHALL BE PAID FOR UNDER WORK ZONE PAVEMENT MARKING REMOVAL.
- THE PAVEMENT MARKING LOCATIONS SHOWN IN THE PLANS ARE APPROXIMATE. PROPOSED CROSSWALKS AND STOP BARS SHALL BE ADJUSTED BY THE CONTRACTOR, IF NECESSARY, TO MATCH FIELD CONDITIONS AND AS DIRECTED BY THE ENGINEER.
- A SEALANT RECOMMENDED BY THE MANUFACTURER AND APPROVED BY THE ENGINEER SHALL BE PLACED ON ALL BITUMINOUS SURFACES WHERE THERMOPLASTIC IS TO BE APPLIED. PAYMENT FOR THIS WORK SHALL BE INCLUDED IN THE CONTRACT UNIT PRICE FOR THERMOPLASTIC PAVEMENT MARKING LINE OF THE SIZE SPECIFIED AND NO ADDITIONAL COMPENSATION WILL BE ALLOWED.
- ROAD CONSTRUCTION AHEAD SIGNS (W20-1(0)) SHALL BE PLACED AT EACH INTERSECTING SIDE STREET AND AT EACH END OF WEST MAIN STREET IN ADVANCE OF THE WORK ZONE. TWO-WAY TRAFFIC SHALL BE MAINTAINED AT ALL TIMES.
 

MANHOLES TO BE ADJUSTED	20	EACH
-------------------------	----	------
- SEE THE SPECIAL PROVISIONS FOR OTHER INCIDENTAL CONSTRUCTION ITEMS AND OPERATIONS WHICH ARE TO BE INCLUDED WITH AND PAID FOR UNDER CERTAIN SPECIFICATION PAY ITEMS.
- THE FOLLOWING SYMBOLS, ABBREVIATIONS AND PATTERNS SUPPLEMENT OR SUPERCEDE HIGHWAY STANDARD 000001:
 

FES	FLARED END SECTION
AD	ALGEBRAIC DIFFERENCE IN GRADE
ESMT	EASEMENT
ELEV	ELEVATION
EVCE	END OF VERTICAL CURVE ELEVATION
EVCS	END OF VERTICAL CURVE STATION
K	LENGTH OF VERTICAL CURVE PER PERCENT GRADE DIFFERENCE
N/F	NOW OR FORMERLY
O/C	OIL AND CHIP
PERM	PERMANENT
PVI	POINT OF VERTICAL INTERSECTION
PVC	POLYVINYL CHLORIDE PIPE
TCE	TEMPORARY CONSTRUCTION EASEMENT
TUP	TEMPORARY USE PERMIT
TBA	TO BE ADJUSTED
TBRL	TO BE RELOCATED
TYP	TYPICAL
W	WIDTH

F.A.U. RTE.	SECTION	COUNTY	TOTAL SHEETS	SHEET NO.
9182	03-00176-03-RS	ST. CLAIR	14	2
STA. - - - - -		TO STA. - - - - -		
FED. ROAD DIST. NO.		ILLINOIS	WEST MAIN STREET	
GENERAL NOTES				

CONTRACT NO. 97284

**SUMMARY OF QUANTITIES**

CODE NO.	ITEM	UNIT	TOTAL QUANTITIES	I-000	Y031-1F
				PARTICIPATING QUANTITIES	NON-PARTICIPATING QUANTITIES
40600100	BITUMINOUS MATERIALS (PRIME COAT)	GALLON	5,392	5,392	
40600300	AGGREGATE (PRIME COAT)	TON	109	109	
40600895	CONSTRUCTING TEST STRIP	EACH	1	1	
42000300	PORTLAND CEMENT CONCRETE PAVEMENT 8"	SQ YD	40	40	
42300200	PORTLAND CEMENT CONCRETE DRIVEWAY PAVEMENT, 6 INCH	SQ YD	14	14	
42300400	PORTLAND CEMENT CONCRETE DRIVEWAY PAVEMENT, 8 INCH	SQ YD	36	36	
42400100	PORTLAND CEMENT CONCRETE SIDEWALK 4 INCH	SQ FT	602	602	
42400300	PORTLAND CEMENT CONCRETE SIDEWALK 6 INCH	SQ FT	376	376	
42400800	DETECTABLE WARNINGS	SQ FT	23	23	
44000006	BITUMINOUS SURFACE REMOVAL 1 1/2"	SQ YD	72,663	72,663	
44000100	PAVEMENT REMOVAL	SQ YD	40	40	
44000200	DRIVEWAY PAVEMENT REMOVAL	SQ YD	102	102	
44000300	CURB REMOVAL	FOOT	579	579	
44000600	SIDEWALK REMOVAL	SQ FT	676	676	
44001700	COMBINATION CONCRETE CURB AND GUTTER REMOVAL AND REPLACEMENT	FOOT	54	54	
44003900	MEDIAN SURFACE REMOVAL AND REPLACEMENT	SQ FT	39	39	
44200994	CLASS B PATCHES, TYPE II, 12 INCH	SQ YD	233	233	
44200998	CLASS B PATCHES, TYPE III, 12 INCH	SQ YD	18	18	
44201000	CLASS B PATCHES, TYPE IV, 12 INCH	SQ YD	28	28	
44201377	CLASS C PATCHES, TYPE II, 12 INCH	SQ YD	67	67	
44201383	CLASS C PATCHES, TYPE IV, 12 INCH	SQ YD	29	29	
44300200	STRIP REFLECTIVE CRACK CONTROL TREATMENT	FOOT	42,406	42,406	
60265500	MANHOLES TO BE ADJUSTED	EACH	20	20	
60260100	INLETS TO BE ADJUSTED	EACH	2	2	
60260505	INLETS TO BE ADJUSTED WITH NEW TYPE 3V FRAME AND GRATE	EACH	2	2	
60260600	INLETS TO BE ADJUSTED WITH NEW TYPE 4 FRAME AND GRATE	EACH	4	4	
60600605	CONCRETE CURB, TYPE B	FOOT	579	579	
67100100	MOBILIZATION	L SUM	1	1	
70101700	TRAFFIC CONTROL AND PROTECTION	L SUM	1	1	
70300100	SHORT-TERM PAVEMENT MARKING	FOOT	18,897	18,897	
70301000	WORK ZONE PAVEMENT MARKING REMOVAL	SQ FT	2,099	2,099	
78000100	THERMOPLASTIC PAVEMENT MARKING - LETTERS AND SYMBOLS	SQ FT	1,651	1,651	
78000200	THERMOPLASTIC PAVEMENT MARKING - LINE 4"	FOOT	31,347	31,347	
78000500	THERMOPLASTIC PAVEMENT MARKING - LINE 8"	FOOT	271	271	
78000600	THERMOPLASTIC PAVEMENT MARKING - LINE 12"	FOOT	942	942	
78000650	THERMOPLASTIC PAVEMENT MARKING - LINE 24"	FOOT	201	201	
78008210	POLYUREA PAVEMENT MARKING TYPE I - LINE 4"	FOOT	1,236	1,236	
78100100	RAISED REFLECTIVE PAVEMENT MARKER	EACH	59	59	
78300200	RAISED REFLECTIVE PAVEMENT MARKER REMOVAL	EACH	46	46	
88800100	DETECTOR LOOP, TYPE I	FOOT	1,254	1,254	
X0323336	LED SIGNAL FACE RETROFIT, RED BALL	EACH	17		17
X0323337	LED SIGNAL FACE RETROFIT, GREEN BALL	EACH	15		15
X0323418	LED SIGNAL FACE RETROFIT, YELLOW BALL	EACH	15		15
X0323419	LED SIGNAL FACE RETROFIT, YELLOW ARROW	EACH	2		2
X0323420	LED SIGNAL FACE RETROFIT, GREEN ARROW	EACH	2		2
X0323421	LED SIGNAL FACE RETROFIT, WALK SIGNAL	EACH	6		6
X0323422	LED SIGNAL FACE RETROFIT, DONT WALK SIGNAL	EACH	6		6
X0324205	TRAFFIC SIGNAL CABINET LOAD SWITCH	EACH	8		8
X4066526	POLYMERIZED BITUMINOUS CONCRETE SURFACE COURSE, SUPERPAVE, MIX "D", N70	TON	6,040	6,040	
XX004949	INCIDENTAL BITUMINOUS SURFACING, SUPERPAVE	TON	68	68	

\* DENOTES SPECIALTY ITEM

DATE	BY	SURVEYED	PLOTTED	NOTE BOOK	TEMPLATE	AREAS	CHECKED

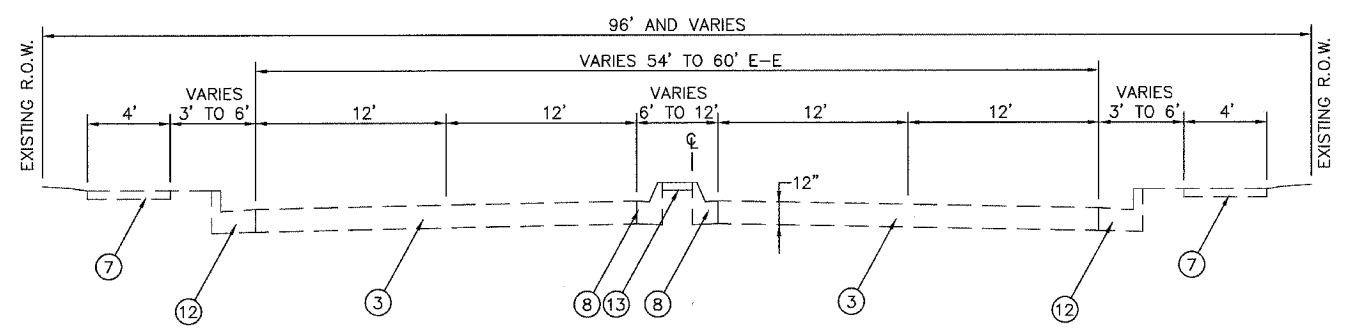
DATE	BY	ORIGINAL SURVEY	PLOTTED	NOTE BOOK	TEMPLATE	AREAS	CHECKED

### LEGEND

- ① EXISTING PC CONCRETE CURB, TYPE B
- ② EXISTING PC CONCRETE PAVEMENT
- ③ EXISTING BITUMINOUS CONCRETE SURFACE
- ④ EXISTING LEVELING BINDER, 1/2"
- ⑤ EXISTING AREA REFLECTIVE CRACK CONTROL TREATMENT
- ⑥ EXISTING BITUMINOUS CONCRETE SURFACE COURSE, 2"
- ⑦ EXISTING PC CONCRETE SIDEWALK
- ⑧ EXISTING CONCRETE CURB & GUTTER, TYPE M-6.12
- ⑨ EXISTING PCC BASE COURSE
- ⑩ PROPOSED BITUMINOUS SURFACE REMOVAL, 1 1/2" AND POLYMERIZED BITUMINOUS SURFACE COURSE, SUPERPAVE, MIX D, N70, 1 1/2"
- ⑪ PROPOSED STRIP REFLECTIVE CRACK CONTROL TREATMENT
- ⑫ EXISTING CONCRETE CURB & GUTTER, TYPE B-6.24
- ⑬ EXISTING PC CONCRETE MEDIAN SURFACE

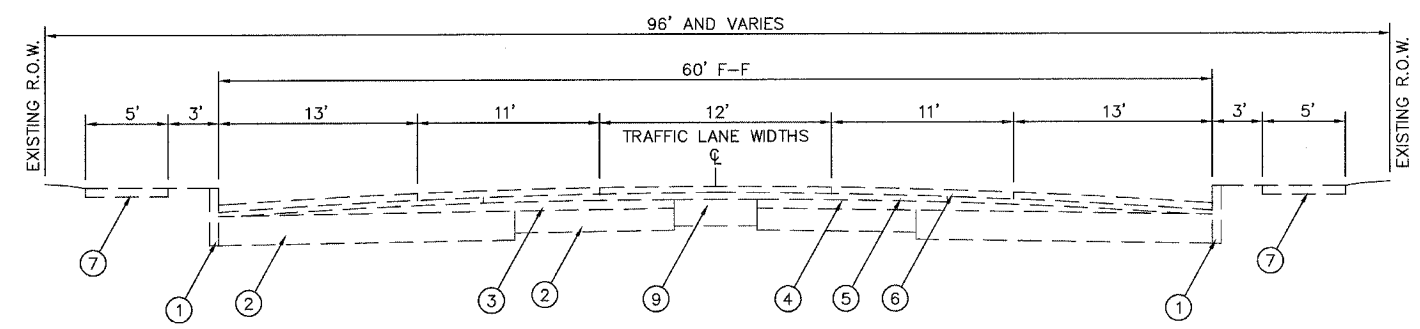
### MIXTURE REQUIREMENTS - SUPERPAVE PROJECT

20 YR ESAL'S: 2.20		
MIXTURE USE	SURFACE	INCIDENTAL
AC/PG	PG 70-22	PG 64-22
RAP% (MAX)	0%	10%
DESIGN AIR VOIDS	4.0% @ Ndes=70	4.0% @ Ndes=70
MIX COMPOSITION (GRADATION MIXTURE)		
FRICITION AGG	MIXTURE D	MIXTURE C



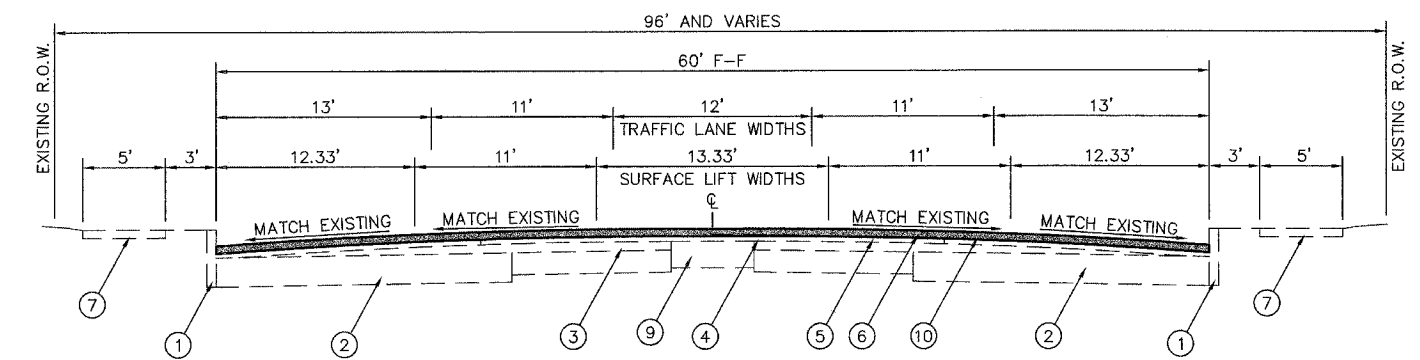
**EXISTING/PROPOSED TYPICAL 4-LANE SECTION**

WEST MAIN STREET  
STA. 303+53 TO STA. 308+55  
(NOT TO SCALE)



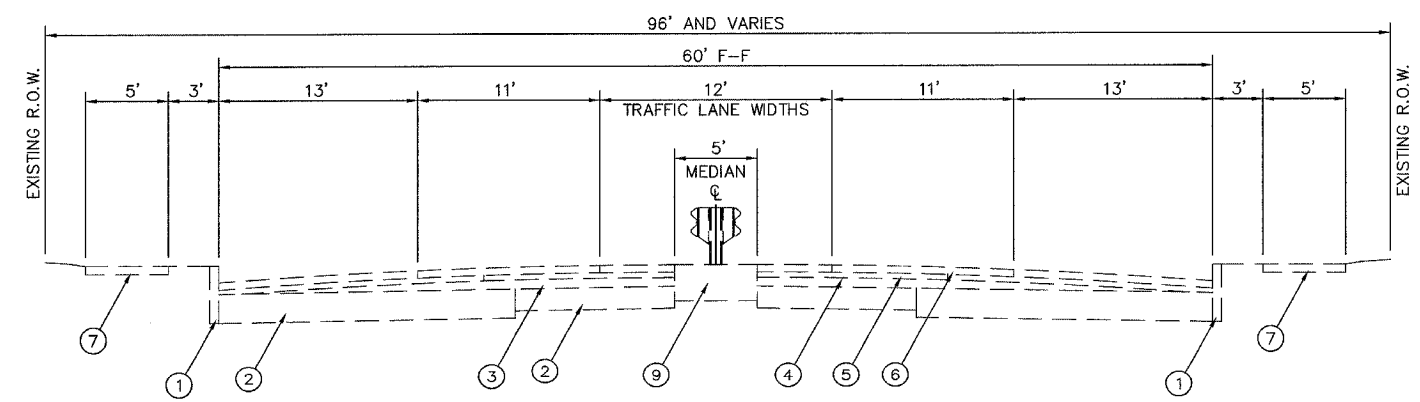
**EXISTING TYPICAL 5-LANE SECTION**

WEST MAIN STREET  
STA. 308+55 TO STA. 313+25  
STA. 318+21 TO STA. 414+56.5  
(NOT TO SCALE)



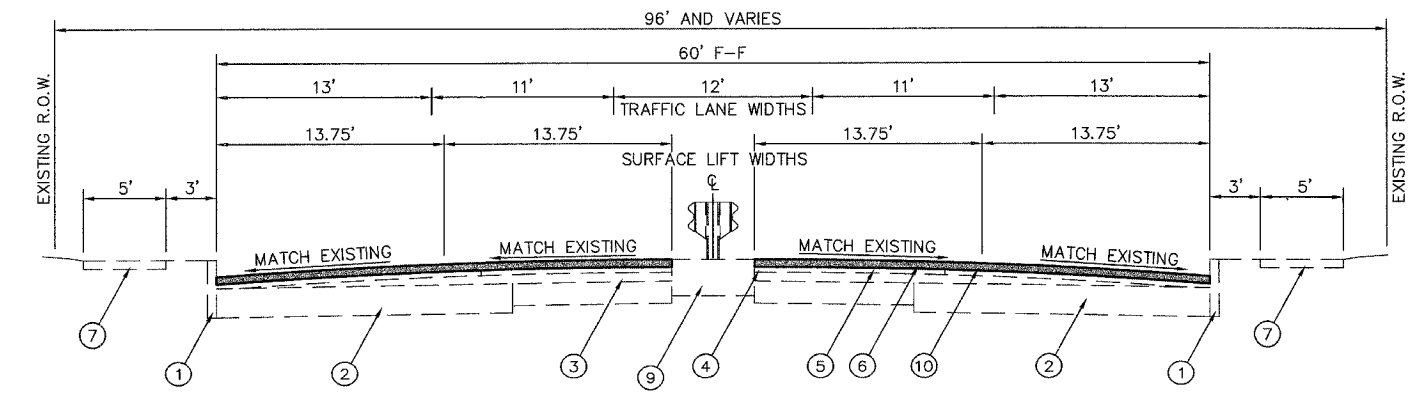
**PROPOSED TYPICAL 5-LANE SECTION**

WEST MAIN STREET  
STA. 308+55 TO STA. 313+25  
STA. 318+21 TO STA. 414+56.5  
(NOT TO SCALE)



**EXISTING TYPICAL 4-LANE SECTION**

WEST MAIN STREET  
STA. 313+25 TO STA. 318+21  
(NOT TO SCALE)



**PROPOSED TYPICAL 4-LANE SECTION**

WEST MAIN STREET  
STA. 313+25 TO STA. 318+21  
(NOT TO SCALE)

DATE  
BY  
FINAL SURVEY PLOTTED  
NOTE BOOK TEMPLATE AREAS CHECKED

DATE  
BY  
ORIGINAL SURVEY PLOTTED  
NOTE BOOK TEMPLATE AREAS CHECKED

F.A.U. RTE.	SECTION	COUNTY	TOTAL SHEETS	SHEET NO.
9182	03-00176-03-RS	ST. CLAIR	14	4
STA.	TO STA.			
FED. ROAD DIST. NO.	ILLINOIS	WEST MAIN STREET		
SCHEDULES				

CONTRACT NO. 97284

### PAVEMENT SCHEDULE

STATION	STATION	BIT MATLS PR CT	AGG PR CT	BIT SURF REM 1 1/2	PAVEMENT REM	PCC PAVT 8	STRIP REF CR CON TR	P BCSC SUPER "D" N70 (NOTE 1) X4066526 (TONS)	INCID BIT SURF SUPER (NOTE 2) XX004949 (TONS)
<b>WEST MAIN STREET</b>									
308+55	317+00	405	8	5,394			3,380	453	
317+00	331+50	725	15	9,667			5,800	812	
331+50	346+50	750	15	10,000			6,000	840	
346+50	361+50	750	15	10,000			6,000	840	
361+50	376+50	750	15	10,000			6,000	840	
376+50	391+50	750	15	10,000			6,000	840	
391+50	406+50	750	15	10,000			6,000	840	
406+50	414+56.5	403	8	5,377			3,226	452	
<b>SIDE STREETS</b>									
309+28	LEBANON ROAD	80	2	1071				90	
323+45	GRANVUE DRVE			62					6
325+29	S. 101ST ST.			52					5
336+65	N. 98TH ST.			50					4
343+07	N. 96TH ST.			71					6
346+68	N. 95TH ST.			36					3
348+84	S. 95TH ST.	29	1	390				33	
372+86	KILMAR WOODS			12	40	40			1
378+66	S. 85TH ST.			73					7
381+49	OAK KNOLL			25					2
389+09	N. 82ND ST.			72					7
396+02	N. 80TH ST.			42					4
399+54	N. 79TH ST.			21					2
403+37	N. 78TH ST.			53					5
404+29	S. 78TH ST.			50					4
407+79	S. 77TH ST.			17					1
411+29	S. 76TH ST.			17					1
413+14	N. 75TH ST.			42					4
<b>TOTAL</b>		<b>5,392</b>	<b>109</b>	<b>72,584</b>	<b>40</b>	<b>40</b>	<b>42,406</b>	<b>6,040</b>	<b>62</b>

PAVEMENT NOTES:  
 1. BITUMINOUS CONCRETE QUANTITY IS CALCULATED AT A RATE OF 112 LB / SQ YD / IN. THICKNESS.  
 2. INCIDENTAL BITUMINOUS SURFACING QUANTITY IS CALCULATED AT A RATE OF 120 LB / SQ YD / IN. THICKNESS. BITUMINOUS MATERIALS (PRIME COAT) AND AGGREGATE (PRIME COAT) ARE REQUIRED BUT WILL NOT BE MEASURED SEPARATELY FOR PAYMENT. THE COST FOR BITUMINOUS MATERIALS AND AGGREGATE SHALL BE INCLUDED IN THE CONTRACT UNIT PRICE FOR INCIDENTAL BITUMINOUS SURFACING. SEE ENTRANCE SCHEDULE FOR ADDITIONAL QUANTITY.

### PAVEMENT PATCHING SCHEDULE

STATION	OFFSET	CL B PATCH T2 12	CL B PATCH T3 12	CL B PATCH T4 12	CL C PATCH T2 12	CL C PATCH T4 12
		44200994 (SQ YD)	44200998 (SQ YD)	44201000 (SQ YD)	44201377 (SQ YD)	44201383 (SQ YD)
303+56	12' RT	8				
303+56	24' RT	8				
303+56	8' LT	11				
303+56	22' LT	9				
304+59	12' RT	8				
304+59	24' RT	8				
304+59	8' LT	11				
304+59	22' LT	9				
304+75	5' LT	6				
305+24	26' LT	6				
305+66	12' RT	8				
305+66	24' RT	8				
305+66	12' LT	7				
305+66	24' LT	9				
306+01	24' LT	9				
306+07	10' LT			28		
306+22	12' RT	8				
306+22	24' RT	8				
306+68	11' LT	8				
306+68	20' LT	7				
307+08	27' LT	6				
307+60	12' RT	10				
307+60	24' RT	8				
307+60	10' LT	10				
307+60	22' LT	9				
308+55	9' RT		18			
308+55	24' RT	12				
308+55	12' LT	11				
308+55	24' LT	11				
325+42	10' RT				6	
325+53	13' RT				8	
325+65	12' RT				7	
325+65	21' RT				5	
346+06	25' RT				9	
356+80	23' RT					29
366+59	11' LT				8	
366+59	24' LT				8	
366+64	11' LT				8	
366+64	24' LT				8	
<b>TOTAL</b>		<b>233</b>	<b>18</b>	<b>28</b>	<b>67</b>	<b>29</b>

PAVEMENT PATCHING NOTES:  
 1. STATIONS AND OFFSETS ARE GIVEN TO THE CENTER OF THE PATCH AND ARE APPROXIMATE

### CONCRETE CURB SCHEDULE

STATION	STATION	OFFSET	CURB REM	CONC CURB TB	COMB C C&G REM & REPL	MED SURF REM & REPL
			44000300 (FOOT)	60600605 (FOOT)	44001700 (FOOT)	44003900 (SQ FT)
304+55	305+00	LT			45	39
304+55	304+65	RT			9	
309+81	311+14	RT	128	128		
351+39	351+61	RT	26	26		
363+79	364+09	RT	30	30		
370+78	371+33	RT	55	55		
372+56	372+78	LT	25	25		
373+11	373+33	LT	25	25		
375+62	376+12	RT	50	50		
376+90	377+21	RT	31	31		
387+92	388+70	LT	78	78		
388+25	388+62	RT	37	37		
394+18	394+35	RT	17	17		
405+43	406+20	RT	77	77		
<b>TOTAL</b>			<b>579</b>	<b>579</b>	<b>54</b>	<b>39</b>

FINAL SURVEYED BY DATE  
 SURVEY PLOTTED BY DATE  
 NOTE BOOK NO. DATE  
 TEMPLATE NO. DATE  
 AREAS CHECKED NO.

### PAVEMENT MARKING SCHEDULE

STATION	STATION	SHORT-TERM PAVT MKING	WORK ZONE PAVT MK REM	THPL PVT MK LTR & SYM (NOTE 1)	THPL PVT MK LINE 4 (NOTE 1)	THPL PVT MK LINE 8 (NOTE 1)	THPL PVT MK LINE 12 (NOTE 1)	THPL PVT MK LINE 24 (NOTE 1)	POLYUREA PM T1 LN 4 (FOOT)	RAISED REFL PAVT MKR (EACH)	RAISED REFL PAVT MK REM (EACH)
		70300100 (FOOT)	70301000 (SQ FT)	78000100 (SQ FT)	78000200 (FOOT)	78000500 (FOOT)	78000650 (FOOT)	78000650 (FOOT)	78008210 (FOOT)	78100100 (EACH)	78300200 (EACH)
303+53	308+55								1,236		
308+55	317+00	1,335	148	134	3,537	271	520	23		59	46
317+00	331+50	2,610	290	190	3,300						
331+50	346+50	2,700	300	253	4,500						
346+50	361+50	2,700	300	221	4,245		231	91			
361+50	376+50	2,700	300	253	4,345		120	74			
376+50	391+50	2,700	300	221	4,500		71	13			
391+50	406+50	2,700	300	253	4,500						
406+50	414+56.5	1,452	161	126	2,420						
<b>TOTAL</b>		<b>18,897</b>	<b>2,099</b>	<b>1,651</b>	<b>31,347</b>	<b>271</b>	<b>942</b>	<b>201</b>	<b>1,236</b>	<b>59</b>	<b>46</b>

PAVEMENT MARKING NOTES:  
 1. SEE HIGHWAY STANDARD 780001 FOR PAVEMENT MARKING DETAILS.  
 2. SEE HIGHWAY STANDARD 781001 FOR RAISED REFLECTIVE PAVEMENT MARKER DETAILS.  
 RAISED REFLECTIVE PAVEMENT MARKER QUANTITY INCLUDES THE FOLLOWING TYPES:  
 35 EACH ONE-WAY CRYSTAL MARKERS  
 24 EACH ONE-WAY AMBER MARKERS  
 59 EACH TOTAL

ORIGINAL SURVEYED BY DATE  
 SURVEY PLOTTED BY DATE  
 NOTE BOOK NO. DATE  
 TEMPLATE NO. DATE  
 AREAS CHECKED NO.

### SIDEWALK SCHEDULE

STATION	STATION	OFFSET	PC CONC SIDEWALK 4 (NOTE 1)	PC CONC SIDEWALK 6 (NOTE 1)	DETECTABLE WARNINGS	SIDEWALK REM
			42400100 (SQ FT)	42400300 (SQ FT)	42400800 (SQ FT)	44000600 (SQ FT)
351+39	351+64	RT	122			55
372+56	373+33	LT		201	23	201
387+88	388+74	LT	432			122
388+31	388+56	RT	48			50
405+50	406+25	RT		175		248
<b>TOTAL</b>			<b>602</b>	<b>376</b>	<b>23</b>	<b>676</b>

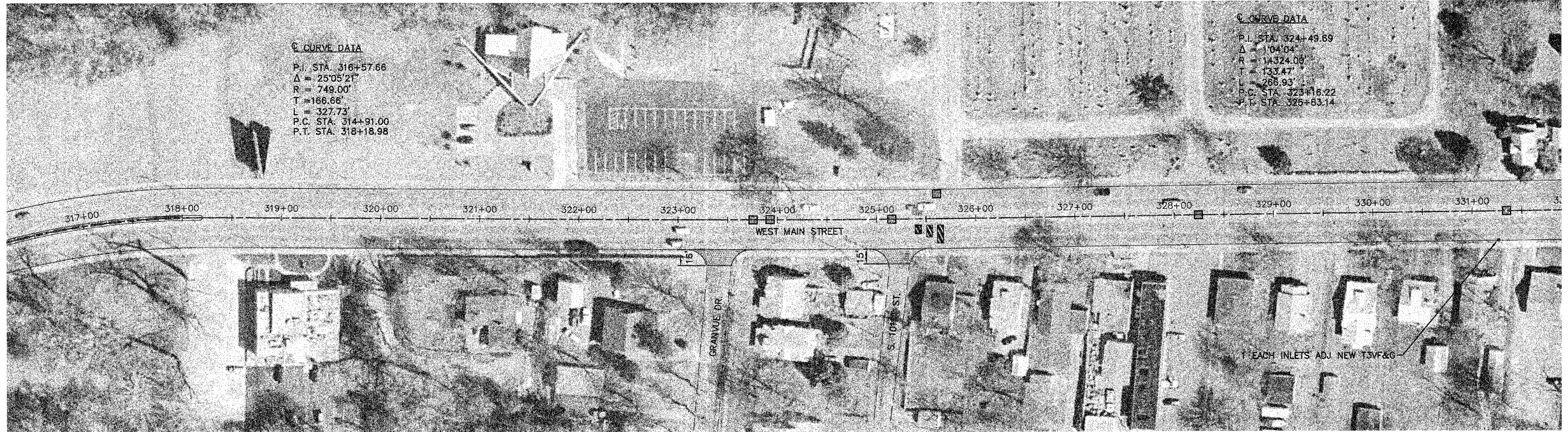
SIDEWALK NOTES:  
 1. SIDEWALK RAMPS ACCESSIBLE TO THE DISABLED ARE REQUIRED. SEE HIGHWAY STANDARD 424001 FOR SIDEWALK RAMP DETAILS. SEE PLAN SHEETS FOR LOCATIONS AND TYPES.



PLAN VIEW

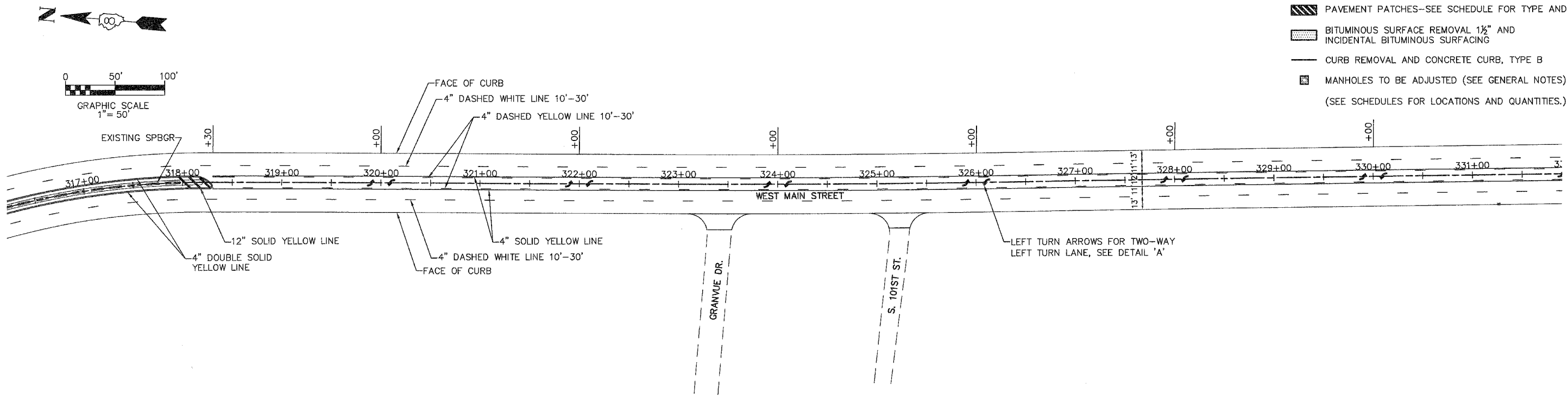
F.A.U. RTE.	SECTION	COUNTY	TOTAL SHEETS	SHEET NO.
9182	03-00176-03-RS	ST. CLAIR	14	6
STA.	317+00	TO STA.	331+50	
FED. ROAD DIST. NO.	ILLINOIS		WEST MAIN STREET	
PLAN VIEW AND PAVEMENT MARKING SHEET				

CONTRACT NO. 97284



LEGEND

- SIDEWALK REMOVAL
- PAVEMENT REMOVAL
- PAVEMENT PATCHES—SEE SCHEDULE FOR TYPE AND CLASS
- BITUMINOUS SURFACE REMOVAL 1½" AND INCIDENTAL BITUMINOUS SURFACING
- CURB REMOVAL AND CONCRETE CURB, TYPE B
- MANHOLES TO BE ADJUSTED (SEE GENERAL NOTES)  
(SEE SCHEDULES FOR LOCATIONS AND QUANTITIES.)



PAVEMENT MARKING PLAN

WEST MAIN STREET

BY	DATE
FINAL SURVEYED	
SURVEY PLOTTED	
NOTE BOOK TEMPLATE	
AREAS	
CHECKED	
NO.	

BY	DATE
ORIGINAL SURVEYED	
SURVEY PLOTTED	
NOTE BOOK TEMPLATE	
AREAS	
CHECKED	
NO.	

PLAN VIEW

F.A.U. RTE.	SECTION	COUNTY	TOTAL SHEETS	SHEET NO.
9182	03-00176-03-RS	ST. CLAIR	14	7
STA.	331+50	TO STA.	346+50	
FED. ROAD DIST. NO.	ILLINOIS WEST MAIN STREET			
PLAN VIEW AND PAVEMENT MARKING SHEET				

CONTRACT NO. 97284

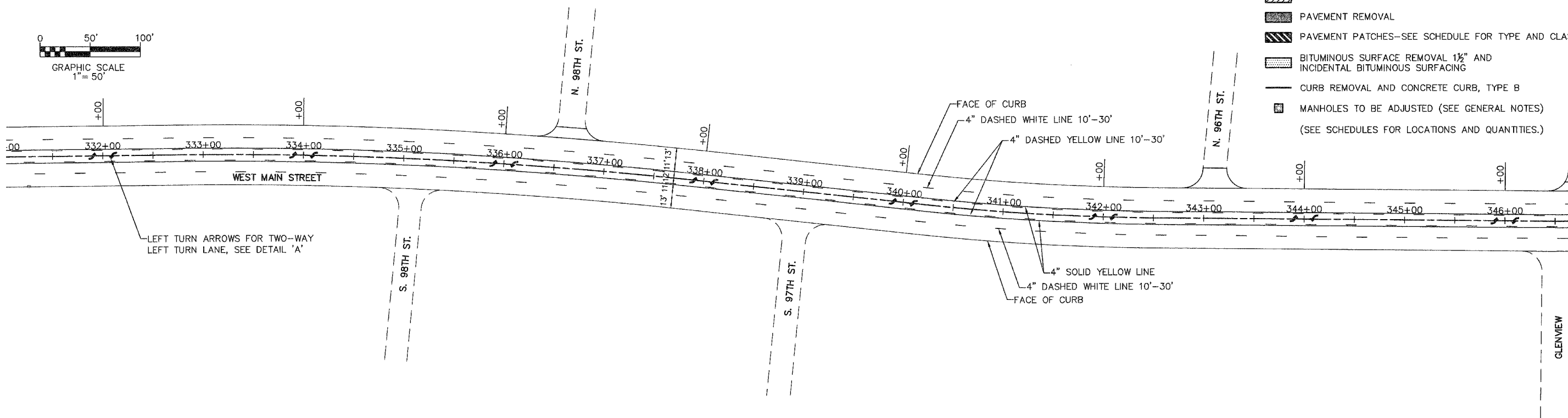
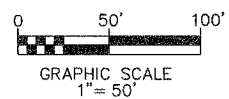
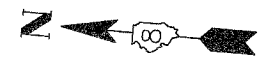


**CURVE DATA**  
 P.I. STA. 335+23.05  
 $\Delta = 6^{\circ}53'51''$   
 $R = 4420.00'$   
 $T = 266.37'$   
 $L = 532.09'$   
 P.C. STA. 332+56.88  
 P.T. STA. 337+88.78

**CURVE DATA**  
 P.I. STA. 341+36.85  
 $\Delta = 5^{\circ}41'29''$   
 $R = 2500.00'$   
 $T = 124.27'$   
 $L = 248.54'$   
 P.C. STA. 340+12.71  
 P.T. STA. 342+60.95

BY	DATE
FINAL SURVEYED	
SURVEY PLOTTED	
NOTE BOOK TEMPLATE	
AREAS	
CHECKED	
NO.	

BY	DATE
ORIGINAL SURVEYED	
SURVEY PLOTTED	
NOTE BOOK TEMPLATE	
AREAS	
CHECKED	
NO.	



LEGEND

- SIDEWALK REMOVAL
- PAVEMENT REMOVAL
- PAVEMENT PATCHES—SEE SCHEDULE FOR TYPE AND CLASS
- BITUMINOUS SURFACE REMOVAL 1 1/2" AND INCIDENTAL BITUMINOUS SURFACING
- CURB REMOVAL AND CONCRETE CURB, TYPE B
- MANHOLES TO BE ADJUSTED (SEE GENERAL NOTES) (SEE SCHEDULES FOR LOCATIONS AND QUANTITIES.)

PAVEMENT MARKING PLAN

WEST MAIN STREET

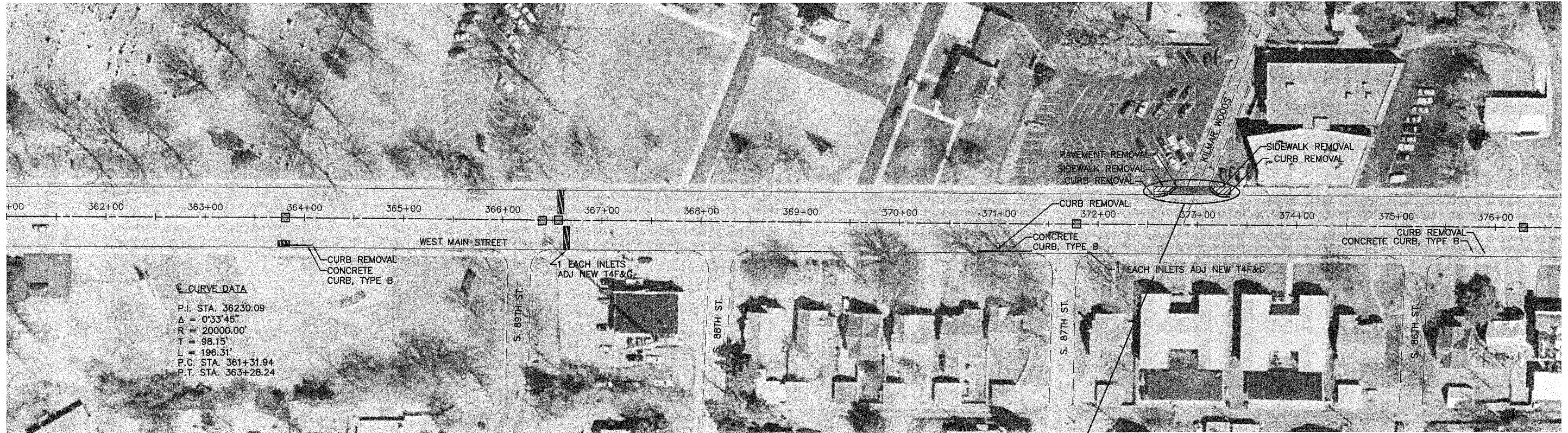




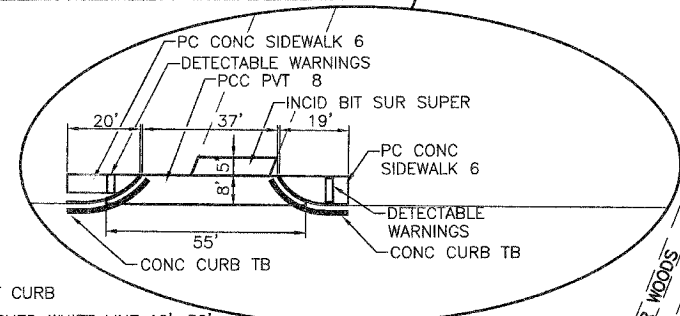
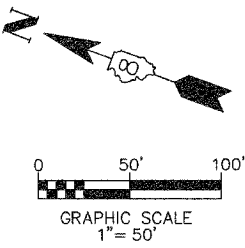
PLAN VIEW

F.A.U. RTE.	SECTION	COUNTY	TOTAL SHEETS	SHEET NO.
9182	03-00176-03-RS	ST. CLAIR	14	9
STA.	361+50	TO STA.	376+50	
FED. ROAD DIST. NO.	ILLINOIS WEST MAIN STREET			
PLAN VIEW AND PAVEMENT MARKING SHEET				

CONTRACT NO. 97284

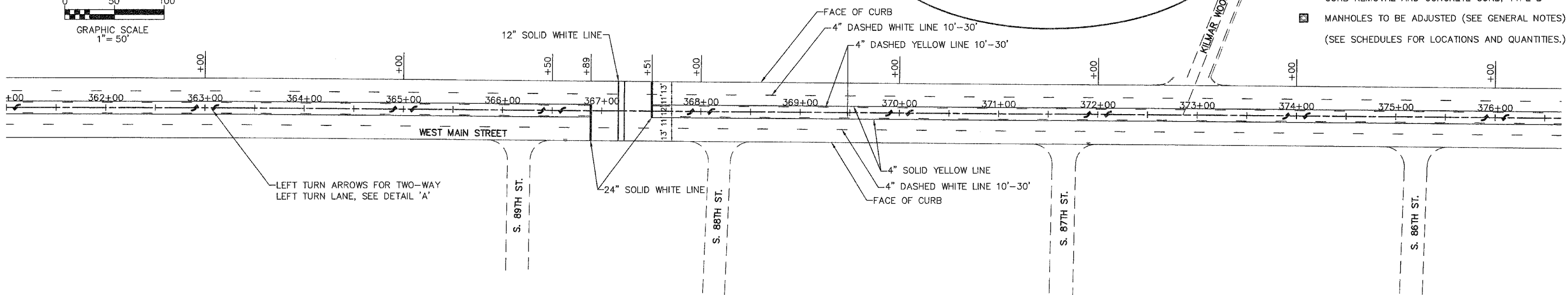


**CURVE DATA**  
 P.I. STA. 36230.09  
 $\Delta = 0^{\circ}33'45''$   
 $R = 20000.00'$   
 $T = 98.15'$   
 $L = 196.31'$   
 P.C. STA. 361+31.94  
 P.T. STA. 363+28.24



**LEGEND**

- SIDEWALK REMOVAL
- PAVEMENT REMOVAL
- PAVEMENT PATCHES—SEE SCHEDULE FOR TYPE AND CLASS
- BITUMINOUS SURFACE REMOVAL 1½" AND INCIDENTAL BITUMINOUS SURFACING
- CURB REMOVAL AND CONCRETE CURB, TYPE B
- MANHOLES TO BE ADJUSTED (SEE GENERAL NOTES) (SEE SCHEDULES FOR LOCATIONS AND QUANTITIES.)



PAVEMENT MARKING PLAN

WEST MAIN STREET

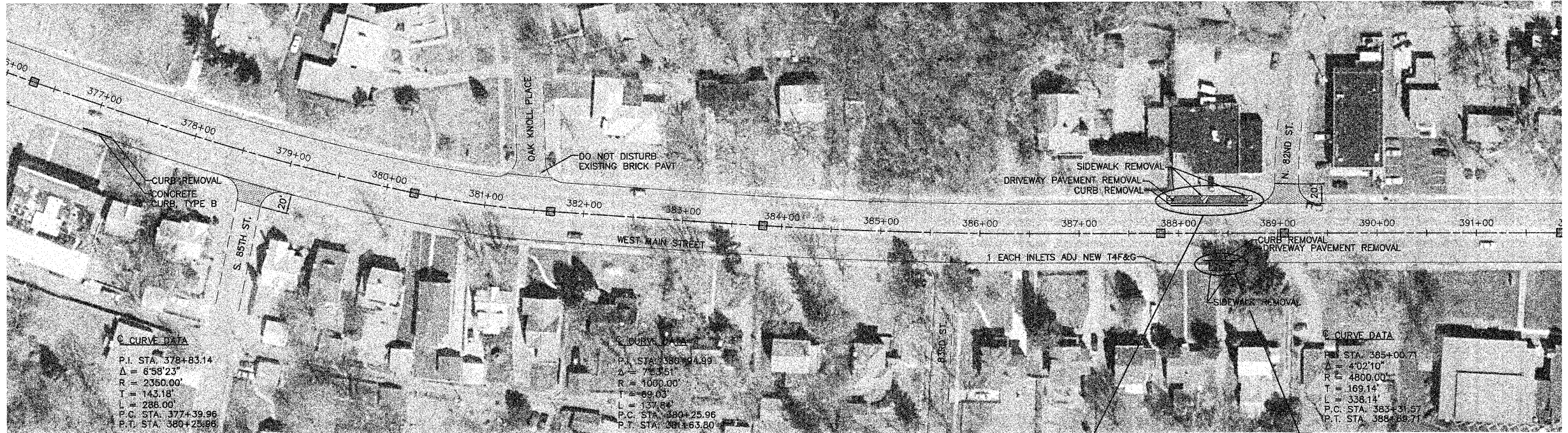
BY	DATE

BY	DATE

PLAN VIEW

F.A.U. RTE.	SECTION	COUNTY	TOTAL SHEETS	SHEET NO.
9182	03-00176-03-RS	ST. CLAIR	14	10
STA.	376+50	TO STA.	391+50	
FED. ROAD DIST. NO.	ILLINOIS WEST MAIN STREET			
PLAN VIEW AND PAVEMENT MARKING SHEET				

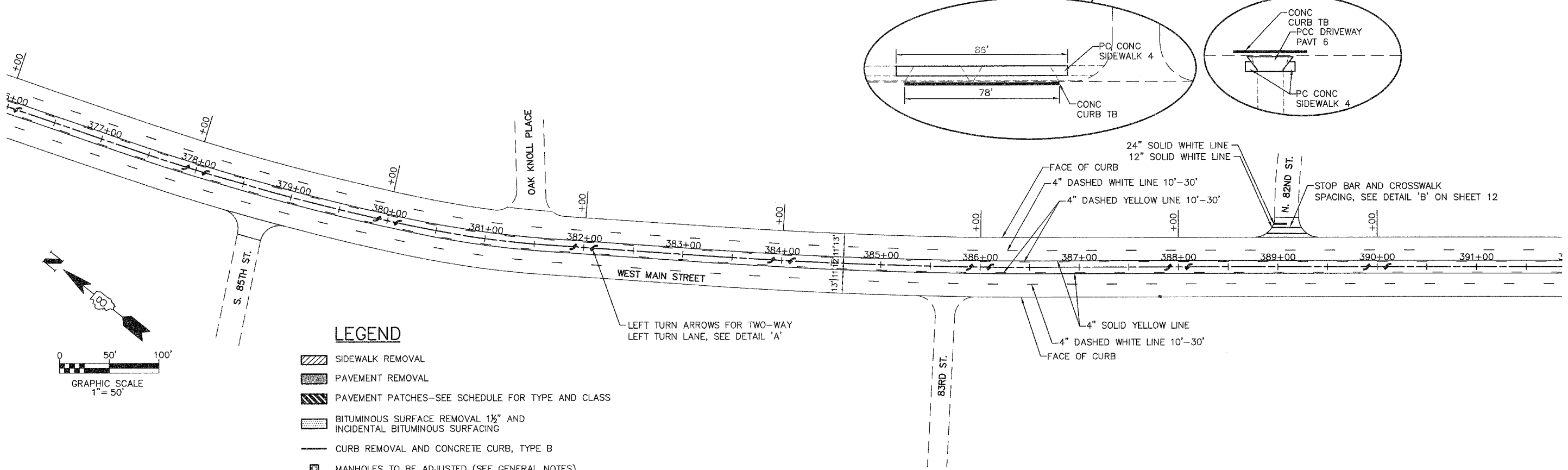
CONTRACT NO. 97284



© CURVE DATA  
 P.I. STA. 378+83.14  
 $\Delta = 6^{\circ}58'23''$   
 $R = 2350.00'$   
 $T = 145.18'$   
 $L = 286.00'$   
 P.C. STA. 377+39.96  
 P.T. STA. 380+25.96

© CURVE DATA  
 P.I. STA. 380+25.96  
 $\Delta = 7^{\circ}33'51''$   
 $R = 1000.00'$   
 $T = 69.03'$   
 $L = 137.84'$   
 P.C. STA. 380+25.96  
 P.T. STA. 381+63.80

© CURVE DATA  
 P.I. STA. 385+00.71  
 $\Delta = 4^{\circ}02'10''$   
 $R = 4800.00'$   
 $T = 169.14'$   
 $L = 338.14'$   
 P.C. STA. 383+31.57  
 P.T. STA. 386+69.71



LEGEND

- SIDEWALK REMOVAL
- PAVEMENT REMOVAL
- PAVEMENT PATCHES—SEE SCHEDULE FOR TYPE AND CLASS
- BITUMINOUS SURFACE REMOVAL 1 1/2" AND INCIDENTAL BITUMINOUS SURFACING
- CURB REMOVAL AND CONCRETE CURB, TYPE B
- MANHOLES TO BE ADJUSTED (SEE GENERAL NOTES)  
(SEE SCHEDULES FOR LOCATIONS AND QUANTITIES.)

PAVEMENT MARKING PLAN

BY	DATE
FINAL SURVEYED	
SURVEY PLOTTED	
NOTE BOOK TEMPLATE	
AREAS CHECKED	
NO.	

BY	DATE
ORIGINAL SURVEYED	
SURVEY PLOTTED	
NOTE BOOK TEMPLATE	
AREAS CHECKED	
NO.	

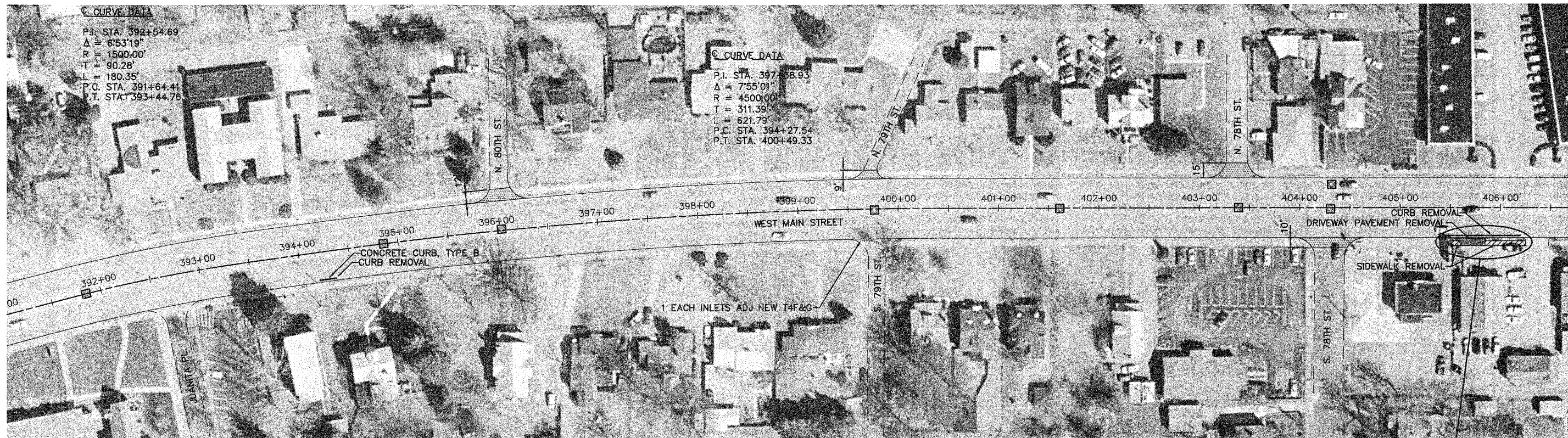
PLAN VIEW

F.A.U. RTE.	SECTION	COUNTY	TOTAL SHEETS	SHEET NO.
9182	03-00176-03-RS	ST. CLAIR	14	11
STA.	391+50	TO STA.	406+50	
FED. ROAD DIST. NO.	ILLINOIS WEST MAIN STREET			
PLAN VIEW AND PAVEMENT MARKING SHEET				

CONTRACT NO. 97284

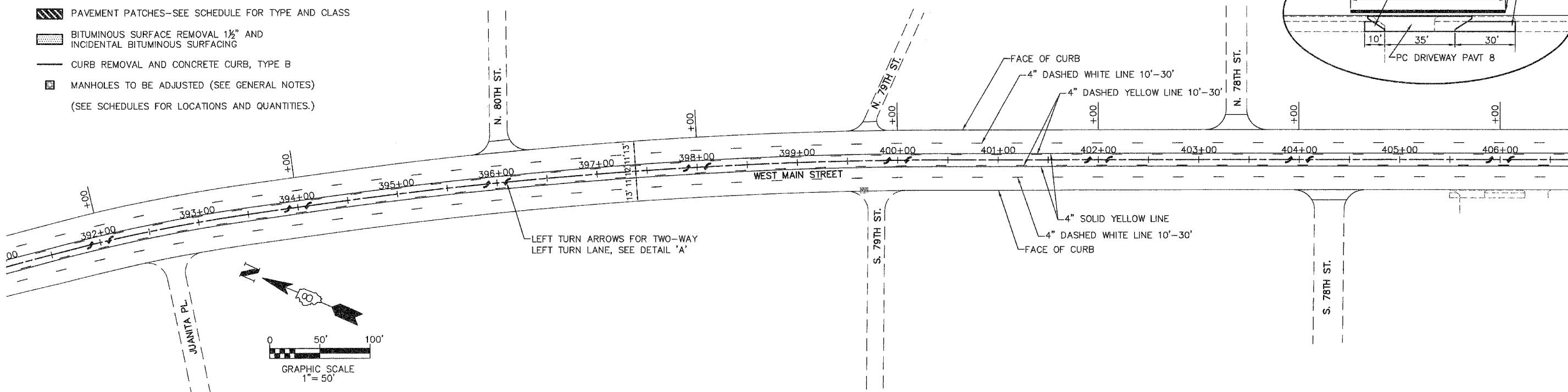
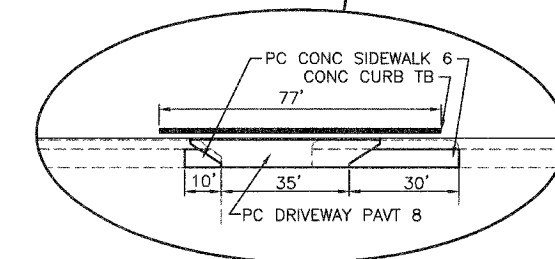
BY	DATE

BY	DATE



LEGEND

- SIDEWALK REMOVAL
- PAVEMENT REMOVAL
- PAVEMENT PATCHES—SEE SCHEDULE FOR TYPE AND CLASS
- BITUMINOUS SURFACE REMOVAL 1 1/2" AND INCIDENTAL BITUMINOUS SURFACING
- CURB REMOVAL AND CONCRETE CURB, TYPE B
- MANHOLES TO BE ADJUSTED (SEE GENERAL NOTES)  
(SEE SCHEDULES FOR LOCATIONS AND QUANTITIES.)

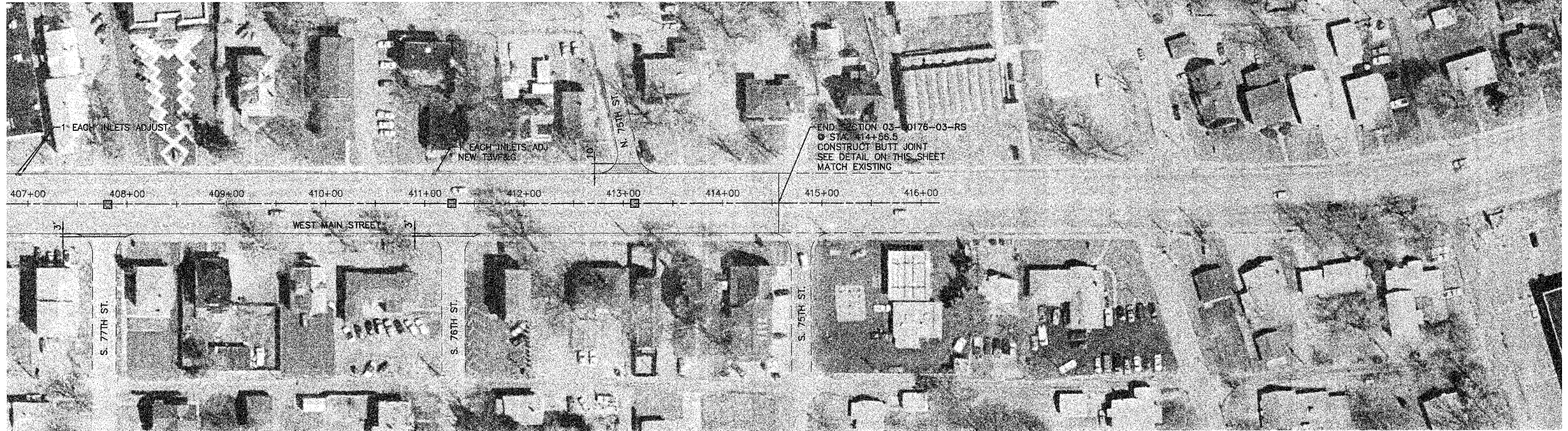


PAVEMENT MARKING PLAN

PLAN VIEW

F.A.U. RTE.	SECTION	COUNTY	TOTAL SHEETS	SHEET NO.
9182	03-00176-03-RS	ST. CLAIR	14	12
STA. 406+50		TO STA.	414+56.5	
FED. ROAD DIST. NO.		ILLINOIS	WEST MAIN STREET	
PLAN VIEW AND PAVEMENT MARKING SHEET				

CONTRACT NO. 97284

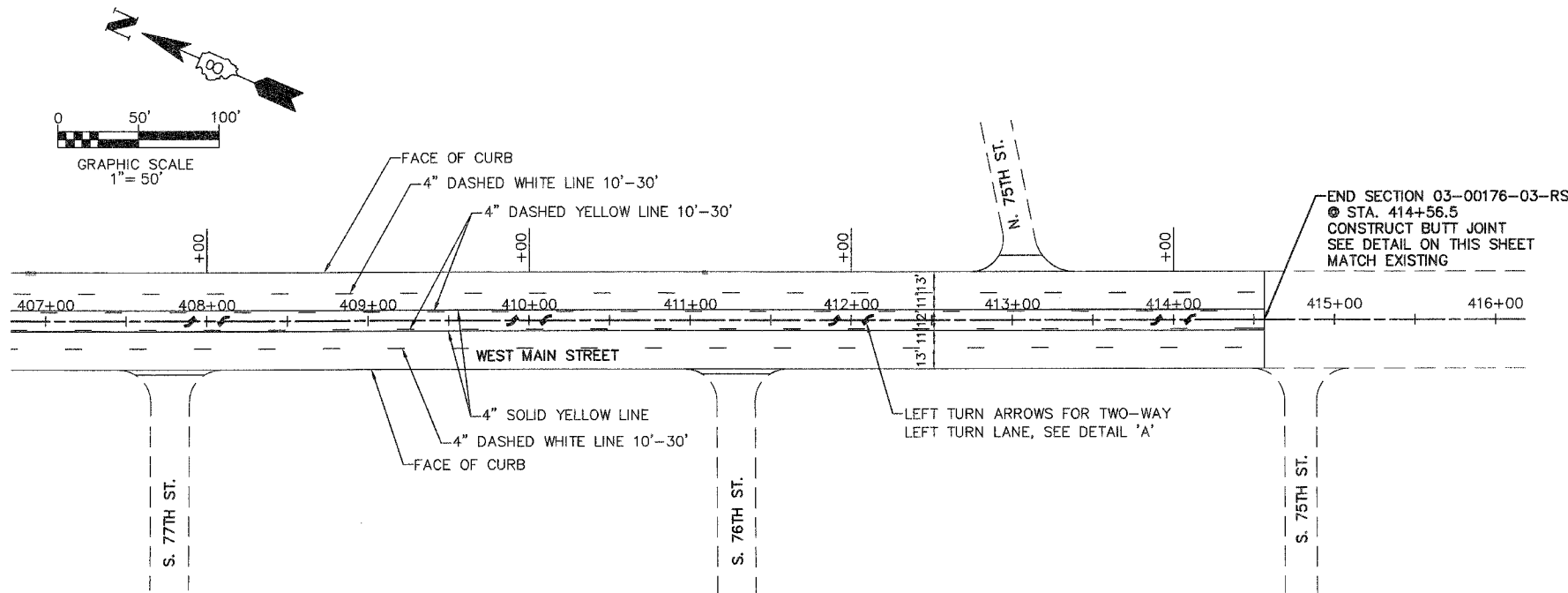


BY	DATE

FINAL SURVEYED SURVEY PLOTTED NOTE BOOK TEMPLATE AREAS CHECKED. NO.

BY	DATE

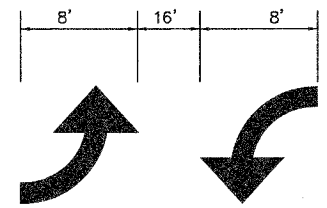
ORIGINAL SURVEYED SURVEY PLOTTED NOTE BOOK TEMPLATE AREAS CHECKED. NO.



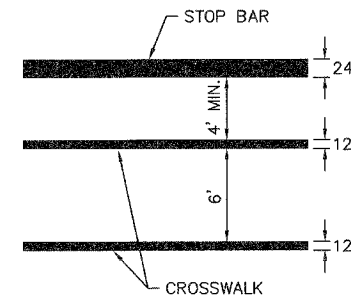
PAVEMENT MARKING PLAN

LEGEND

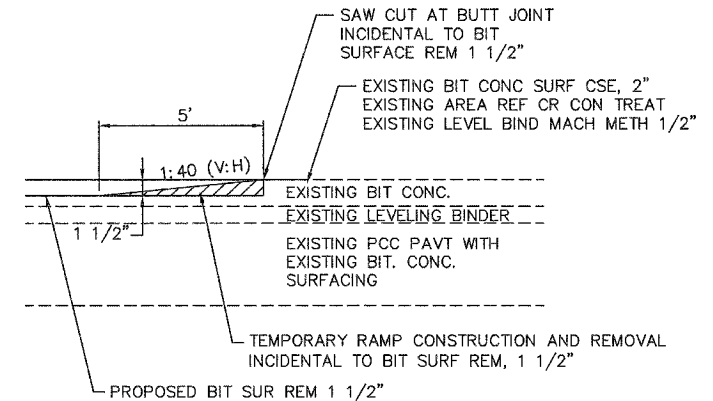
- SIDEWALK REMOVAL
  - PAVEMENT REMOVAL
  - PAVEMENT PATCHES--SEE SCHEDULE FOR TYPE AND CLASS
  - BITUMINOUS SURFACE REMOVAL 1 1/2" AND INCIDENTAL BITUMINOUS SURFACING
  - CURB REMOVAL AND CONCRETE CURB, TYPE B
  - MANHOLES TO BE ADJUSTED (SEE GENERAL NOTES)
- (SEE SCHEDULES FOR LOCATIONS AND QUANTITIES.)



DETAIL 'A'  
(NOT TO SCALE)



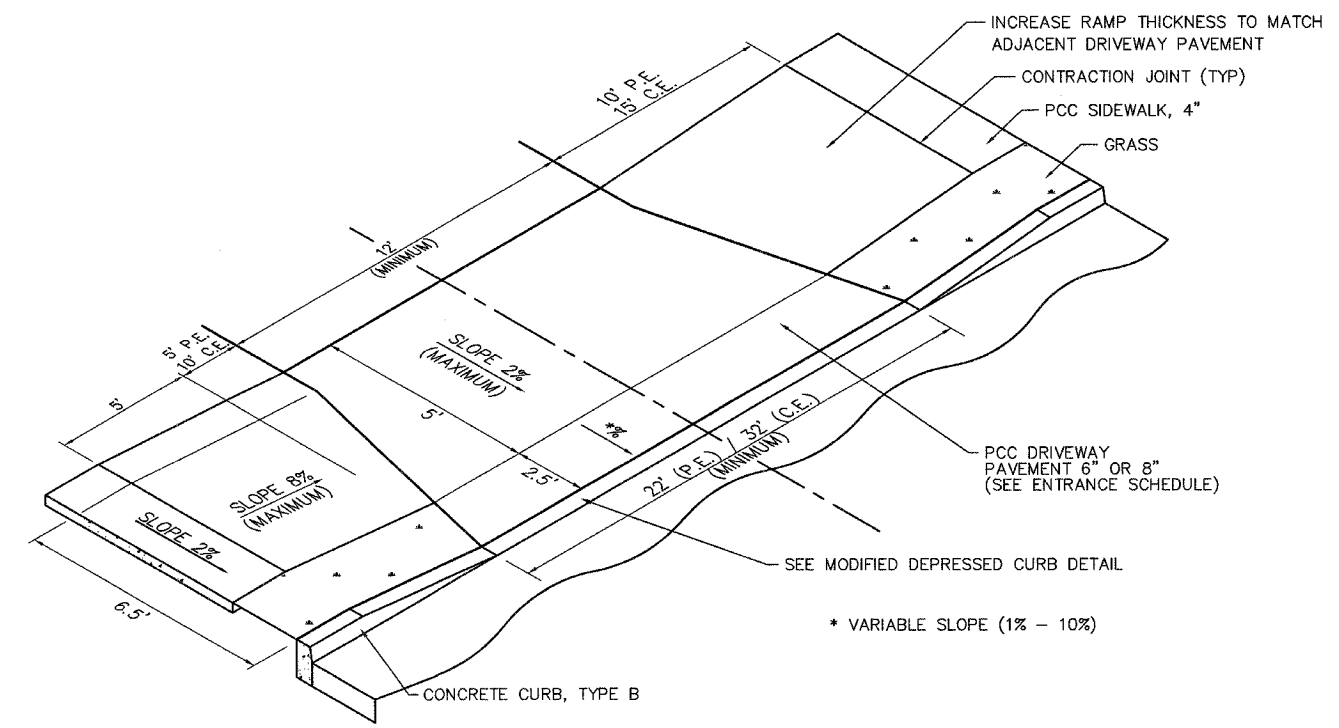
DETAIL 'B'  
(NOT TO SCALE)



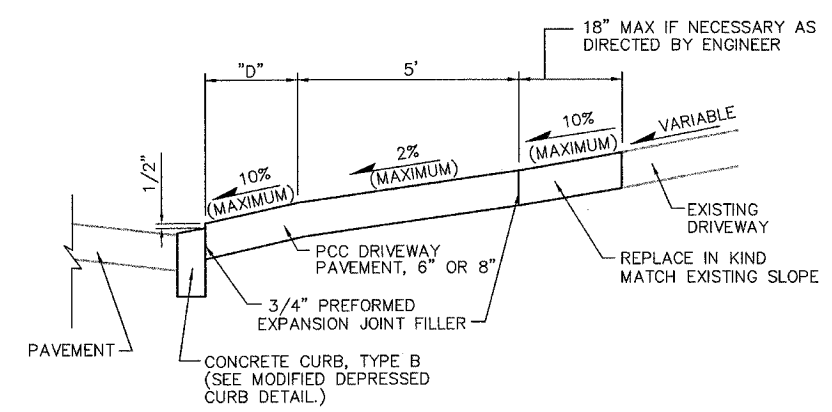
BUTT JOINT DETAIL  
(NOT TO SCALE)

ENTRANCE SCHEDULE										
STATION	OFFSET	ENTRANCE TYPE	EXISTING SURFACE TYPE	EXISTING ENTRANCE WIDTH (FOOT)	PROPOSED ENTRANCE WIDTH (NOTE 1) (FOOT)	PCC DRIVEWAY PAVT 6 (SQ YD)	PCC DRIVEWAY PAVT 8 (SQ YD)	BIT SURF REM 1 1/2 (SQ YD)	DRIVE PAVEMENT REM (SQ YD)	INCID BIT SUR SUPER (NOTE 2) (TON)
351+52	RT	PE	CONC.							
360+64	LT	CE	ASPH.	35	35			69	12	6
388+31	LT	CE	CONC.							
388+44	RT	PE	CONC.	13	13	14			55	13
405+71	RT	CE	CONC.	25	35		36		22	
<b>TOTAL</b>						<b>14</b>	<b>36</b>	<b>69</b>	<b>102</b>	<b>6</b>

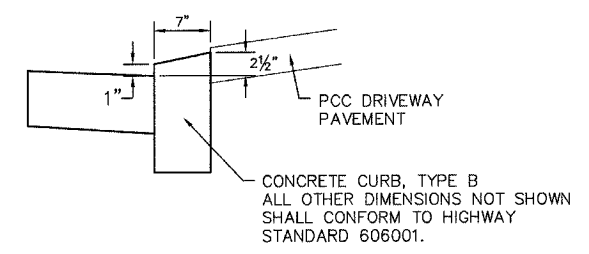
- ENTRANCE NOTES:**
- PRIOR TO CONSTRUCTION, THE CONTRACTOR SHALL CONTACT EACH PROPERTY OWNER AND VERIFY THE LOCATION AND WIDTH OF ALL ENTRANCES.
  - INCIDENTAL BITUMINOUS SURFACING QUANTITY IS CALCULATED AT A RATE OF 120 LB / SQ YD / IN. THICKNESS. BITUMINOUS MATERIALS (PRIME COAT) AND AGGREGATE (PRIME COAT) ARE REQUIRED BUT WILL NOT BE MEASURED SEPARATELY FOR PAYMENT. THE COST FOR BITUMINOUS MATERIALS AND AGGREGATE SHALL BE INCLUDED IN THE CONTRACT UNIT PRICE FOR INCIDENTAL BITUMINOUS SURFACING. SEE PAVEMENT SCHEDULE FOR ADDITIONAL QUANTITIES.



**ENTRANCE DETAIL**  
(NO SCALE)

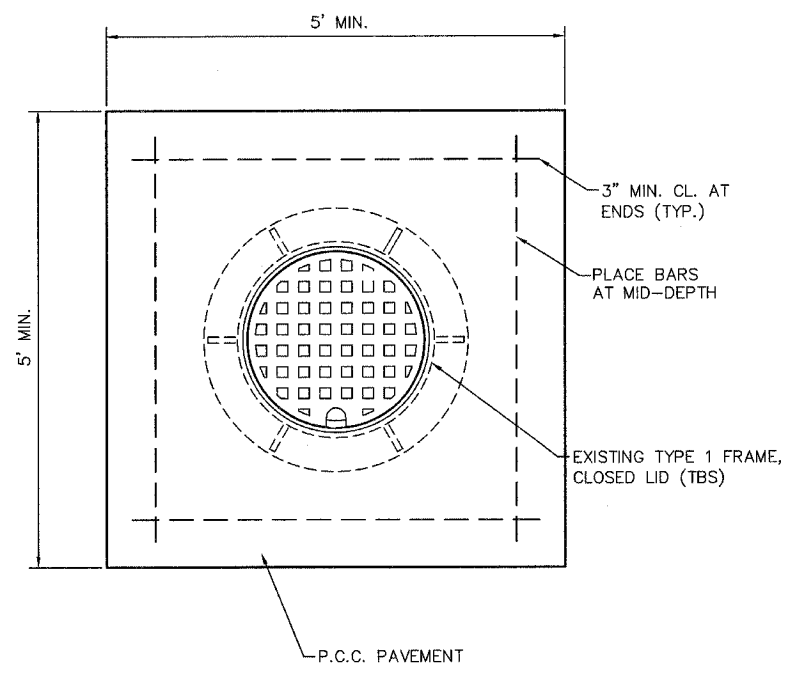


**TYPICAL ENTRANCE PROFILE**  
(NOT TO SCALE)

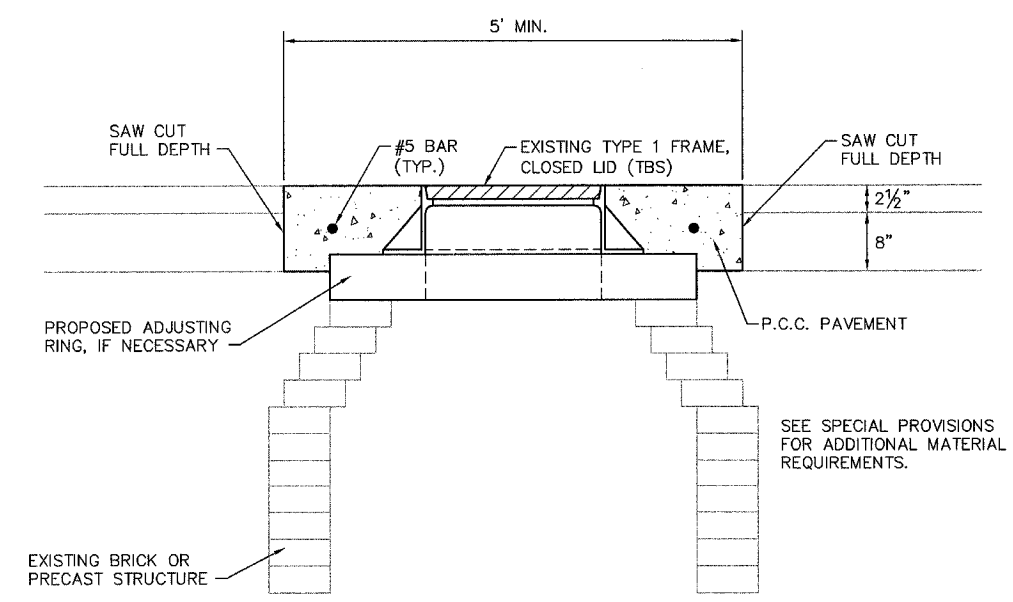


**MODIFIED DEPRESSED CURB**  
(NOT TO SCALE)

TO BE USED ONLY AT ENTRANCE AND ALLEY LOCATIONS WHERE CURB IS ADJACENT TO THE EDGE OF PAVEMENT BUT NOT ALONG CORNER TURNING RADII AT SIDEWALK RAMPS.



**PLAN**



**ELEVATION**

**MANHOLES TO BE ADJUSTED**  
(NO SCALE)

DATE: \_\_\_\_\_  
BY: \_\_\_\_\_  
SURVEYED: \_\_\_\_\_  
PLOTTED: \_\_\_\_\_  
NOTE BOOK: \_\_\_\_\_  
TEMPLATE: \_\_\_\_\_  
AREAS CHECKED: \_\_\_\_\_  
NO. \_\_\_\_\_

DATE: \_\_\_\_\_  
BY: \_\_\_\_\_  
SURVEYED: \_\_\_\_\_  
PLOTTED: \_\_\_\_\_  
NOTE BOOK: \_\_\_\_\_  
TEMPLATE: \_\_\_\_\_  
AREAS CHECKED: \_\_\_\_\_  
NO. \_\_\_\_\_

F.A. RTE.	SECTION	COUNTY	TOTAL SHEETS	SHEET NO.
9182	03-00176-03-RS	ST. CLAIR	14	14
STA.		TO STA.		
FED. ROAD DIST. NO.		ILLINOIS	WEST MAIN STREET	
TRAFFIC SIGNAL PLANS				

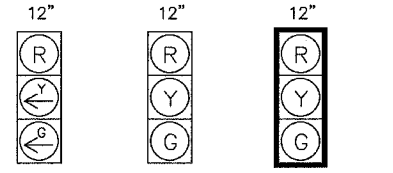
CONTRACT NO. 97284

LOOP #	DIRECTION	PHASE	LOOPS SIZE (FOOT)	REQUIRED NUMBER OF TURNS	LEAD-IN CABLE LENGTH (FOOT)	CALCULATED INDUCTANCE (microhenries)	CALCULATED RESISTANCE (ohms)
<b>WEST MAIN STREET &amp; 95TH STREET</b>							
1	N.B.		6' X 50'	3-6-3	115	811	2.2
2	N.B.		6' X 50'	3-6-3	121	810	2.2
3	N.B. LT.		6' X 50'	3-6-3	118	815	2.2
4	S.B.		6' X 50'	3-6-3	114	811	2.2
5	S.B.		6' X 50'	3-6-3	125	814	2.2
6	S.B. LT./THRU		6' X 50'	3-6-3	137	816	2.3
7	E.B. LT.		6' X 50'	3-6-3	39	795	1.8

THE ABOVE VALUES ARE CALCULATIONS OF COMBINED LOOP AND LEAD-IN INDUCTANCE AND RESISTANCE. ACTUAL VALUES SHOULD BE WITHIN 20% OF THESE VALUES.

### CABLE DIAGRAM LEGEND

- EXISTING ELECTRIC CABLE IN CONDUIT
- #6 LOOP DETECTOR NUMBER
- ⊙ EXISTING PEDESTRIAN PUSH BUTTON
- ⊗ EXISTING LIGHT DETECTOR WITH CONFIRMATION BEACON (EMERGENCY VEHICLE PRIORITY SYSTEM)
- ▭ PROPOSED DETECTOR LOOP (SEE HIGHWAY STANDARDS 886001 & 886006)
- PROPOSED SPLICE IN HANDHOLE
- ▭ SHADED OBJECTS INDICATE EXISTING SIGNAL FEATURES TO REMAIN.



SIGNAL HEAD WITH BACKPLATE

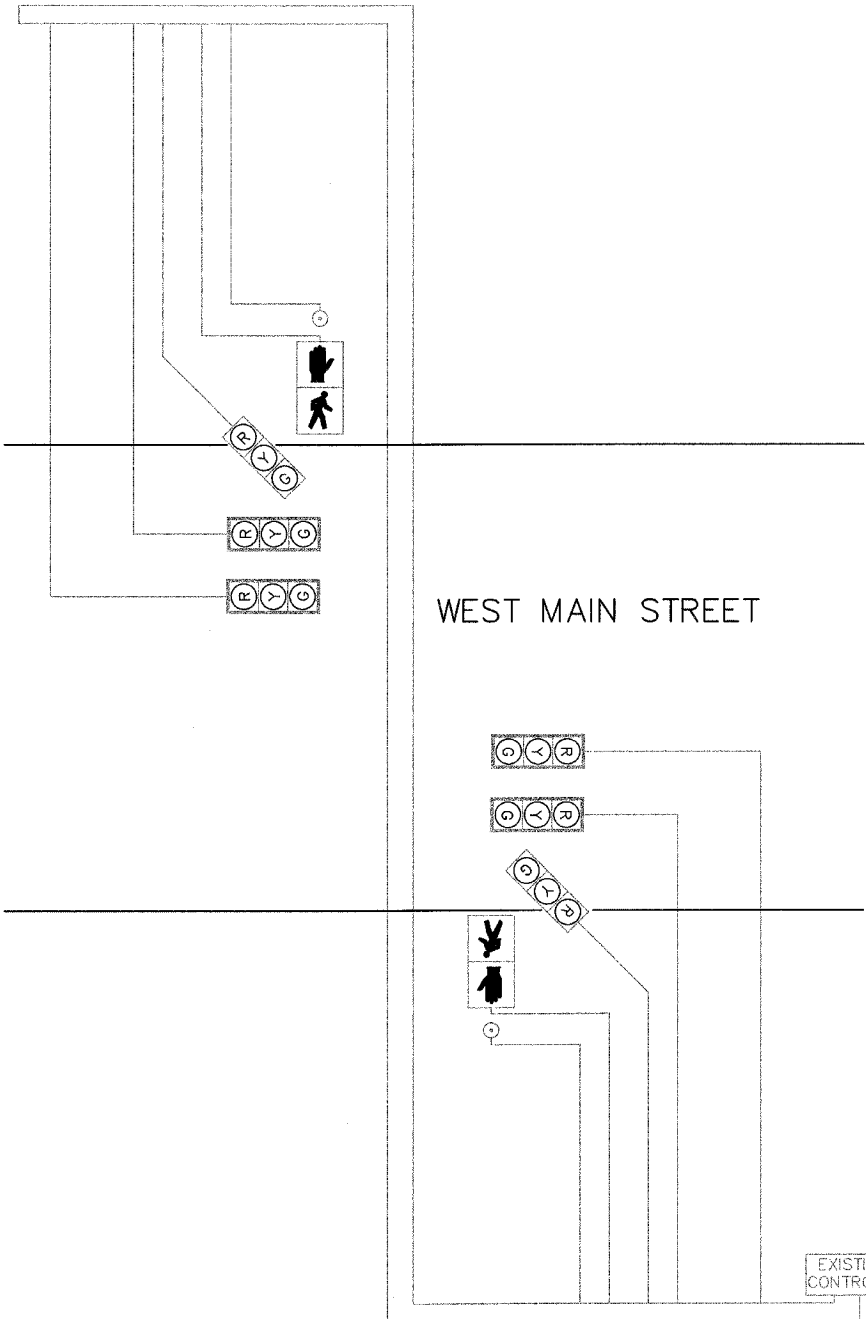
### TRAFFIC SIGNAL FACES

DATE	BY
DATE	BY
DATE	BY

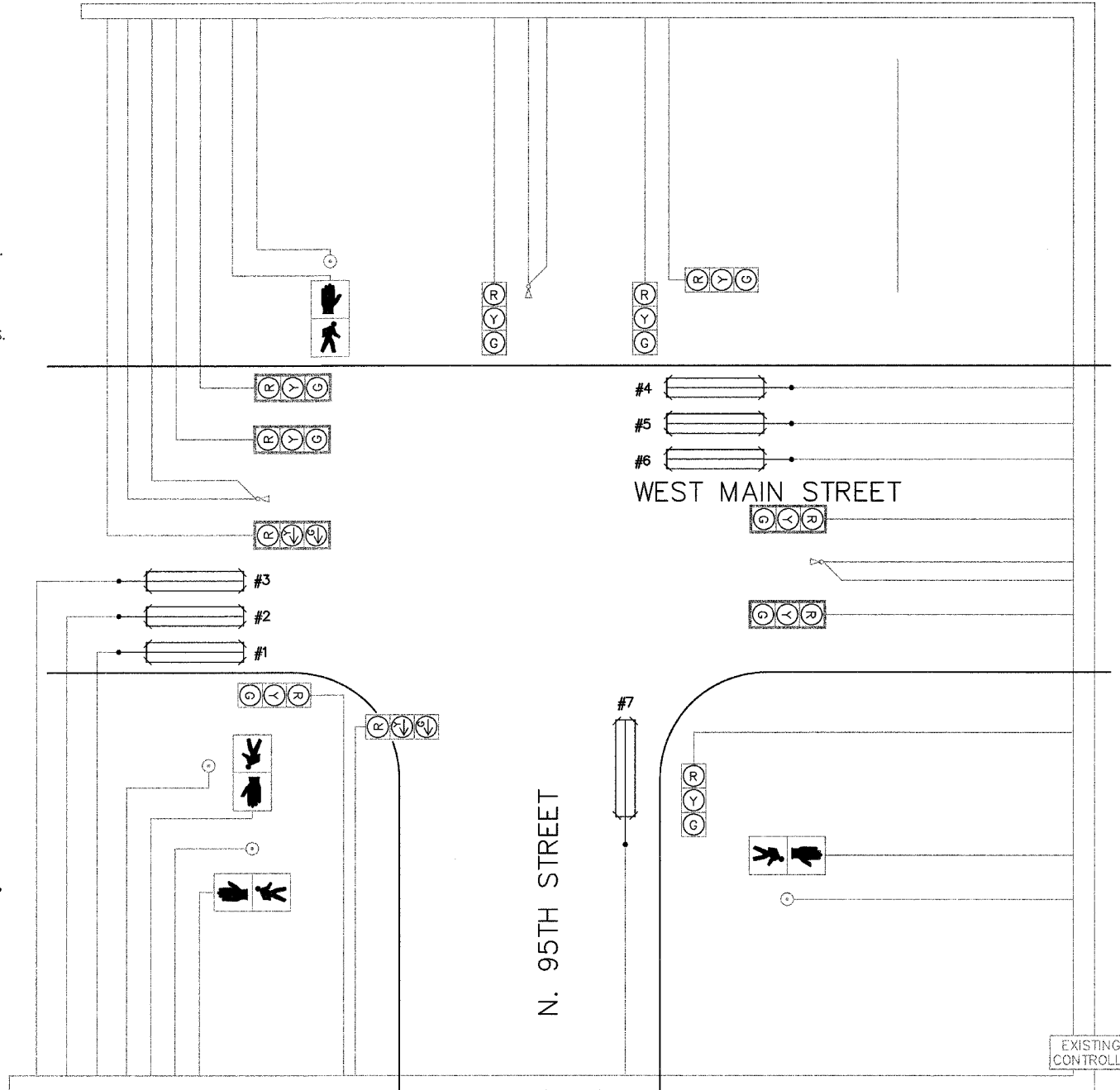
DATE	BY
DATE	BY
DATE	BY

### ELECTRICAL GENERAL NOTES

- ALL EXISTING INCANDESCENT VEHICLE AND PEDESTRIAN BULBS SHALL BE REPLACED WITH LED BULBS. EXISTING LED BULBS TO REMAIN IN PLACE.
- THE LOCATION OF ALL DETECTOR LOOPS SHALL BE APPROVED BY THE ENGINEER BEFORE ANY SLOTS ARE SAWED IN THE PAVEMENT.
- THE OPTICAL UNIT OF ALL TRAFFIC AND PEDESTRIAN SIGNAL HEADS SHALL BE LIGHT EMITTING DIODES (LED) INSTEAD OF INCANDESCENT BULBS.
- DETECTOR LOOP LEAD-IN SPLICES SHALL BE MADE IN A HANDHOLE PER SECTION 873 OF THE "STANDARD SPECIFICATIONS FOR ROAD AND BRIDGE CONSTRUCTION". CONDUCTORS SHALL BE SPLICED IN A RIGID MOLD FILLED WITH NON-HARDENING EPOXY FILLER. RESIN CORE SOLDER SHALL BE USED.
- ALL UTILITIES SHALL BE LOCATED IN THE FIELD PRIOR TO ANY ATTEMPT TO CONSTRUCT ANY COMPONENT OF THE VARIOUS TRAFFIC SIGNAL INSTALLATIONS. AGENCIES KNOWN TO HAVE FACILITIES WITHIN THE LIMITS OF THIS IMPROVEMENT ARE THE FOLLOWING:  
 AMEREN IP (GAS & ELECTRIC)  
 ATT (TELEPHONE)  
 MCLEOD USA (FIBER OPTIC COMMUNICATION CABLE)  
 CHARTER COMMUNICATIONS (CABLE TV)  
 ILLINOIS AMERICAN WATER COMPANY (WATER)  
 CITY OF BELLEVILLE (SEWER)  
 THE LOCATION OF EXISTING UTILITIES AS SHOWN ON THE PLANS HAVE BEEN LOCATED AT THE TIME OF SURVEY, OR BASED ON AVAILABLE EXISTING INFORMATION. NO GUARANTEE IS IMPLIED THAT ALL UTILITIES HAVE BEEN LOCATED OR DEPICTED ON THE PLANS. THE CONTRACTOR SHALL BE RESPONSIBLE FOR VERIFYING THE EXACT LOCATION OF ALL UTILITIES. IT MAY BE NECESSARY TO HAND DIG TEST HOLES TO EXPOSE EXISTING UTILITIES AT SOME LOCATIONS.
- SEE "JOINT UTILITY LOCATION INFORMATION FOR EXCAVATORS" (JULIE) IN THE SPECIAL PROVISIONS. CALL (800) 892-0123 ONE WEEK BEFORE PLANNING TO DIG.
- SEE SPECIAL PROVISIONS FOR TRAFFIC CONTROL AND CONSTRUCTION STAGING REQUIREMENTS.
- DETECTOR LOOPS WITHIN RESURFACING LIMITS SHALL BE INSTALLED IN THE PAVEMENT PRIOR TO RESURFACING, AS DIRECTED BY THE ENGINEER. DETECTOR LOOPS SHALL BE A MINIMUM OF 4 INCHES DEEP, TOTAL DEPTH, AFTER RESURFACING.
- NO NEW CABLE IS REQUIRED, REUSE EXISTING CABLES IN PLACE.
- EXISTING EMERGENCY VEHICLE PRIORITY SYSTEM EQUIPMENT TO REMAIN, NO RECONSTRUCTION REQUIRED.
- ALL EXISTING LOAD SWITCHES SHALL BE REPLACED.



CABLE DIAGRAM @ STA. 367+24



95TH ST. CABLE DIAGRAM