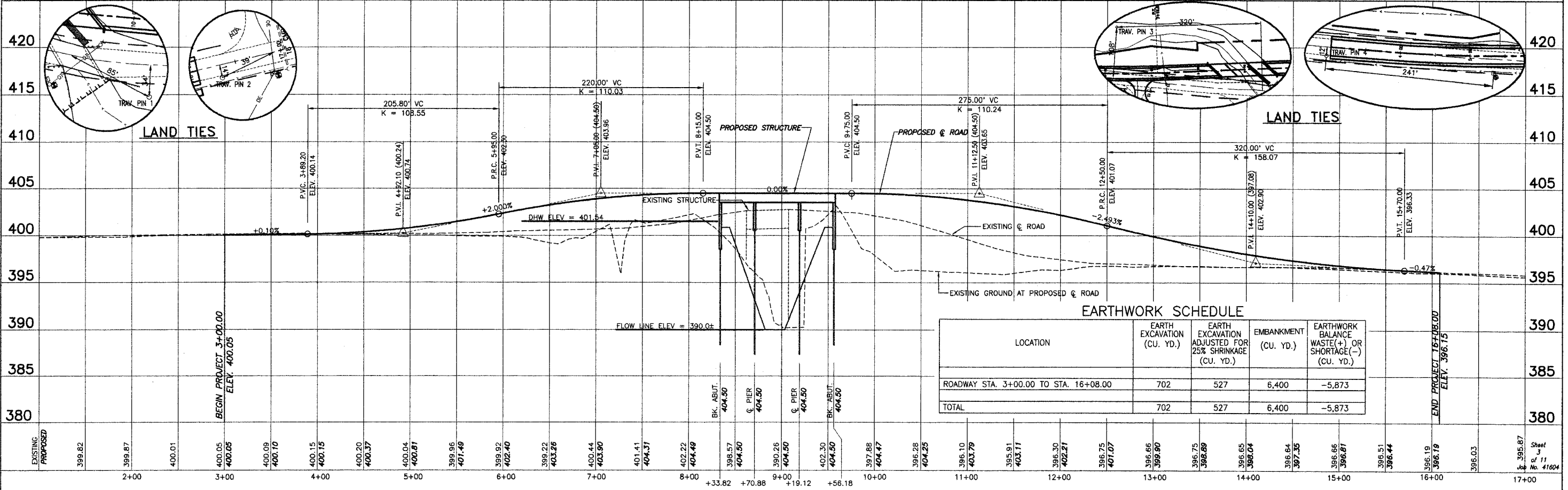
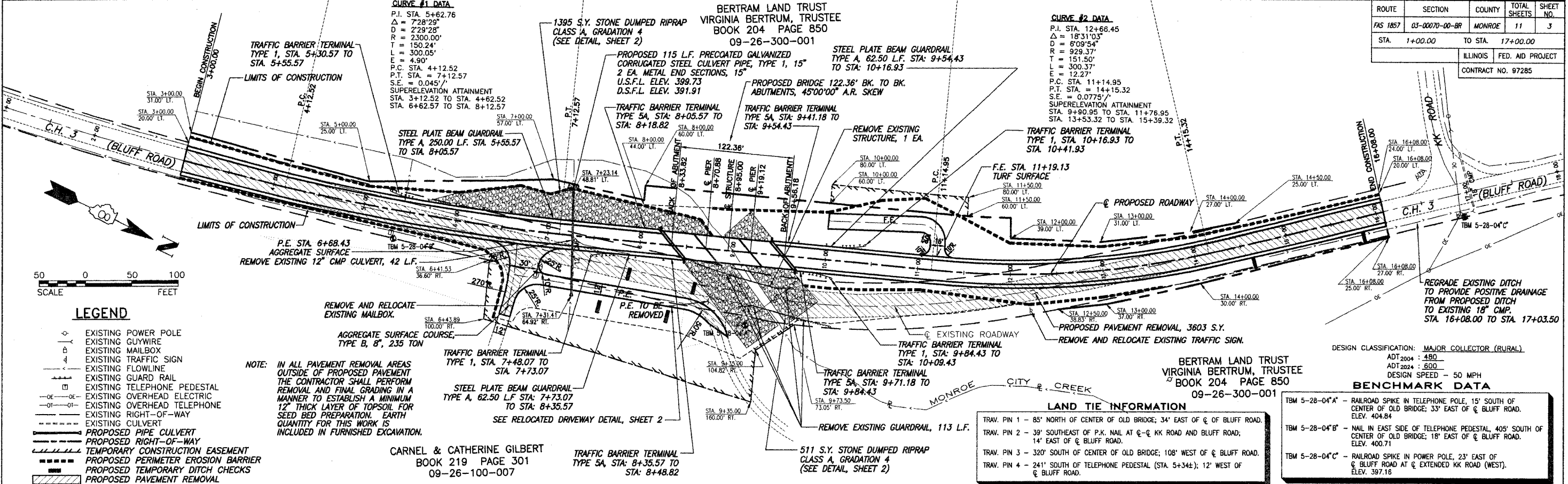


ROUTE	SECTION	COUNTY	TOTAL SHEETS	SHEET NO.
FAS 1857	03-00070-00-BR	MONROE	11	3
STA. 1+00.00 TO STA. 17+00.00		ILLINOIS FED. AID PROJECT		
		CONTRACT NO. 97285		



PLAN AND PROFILE OF ROADWAY BRIDGE OVER MONROE CITY CREEK
 FAS 1857 C.H. 3 SECTION 03-00070-00-BR