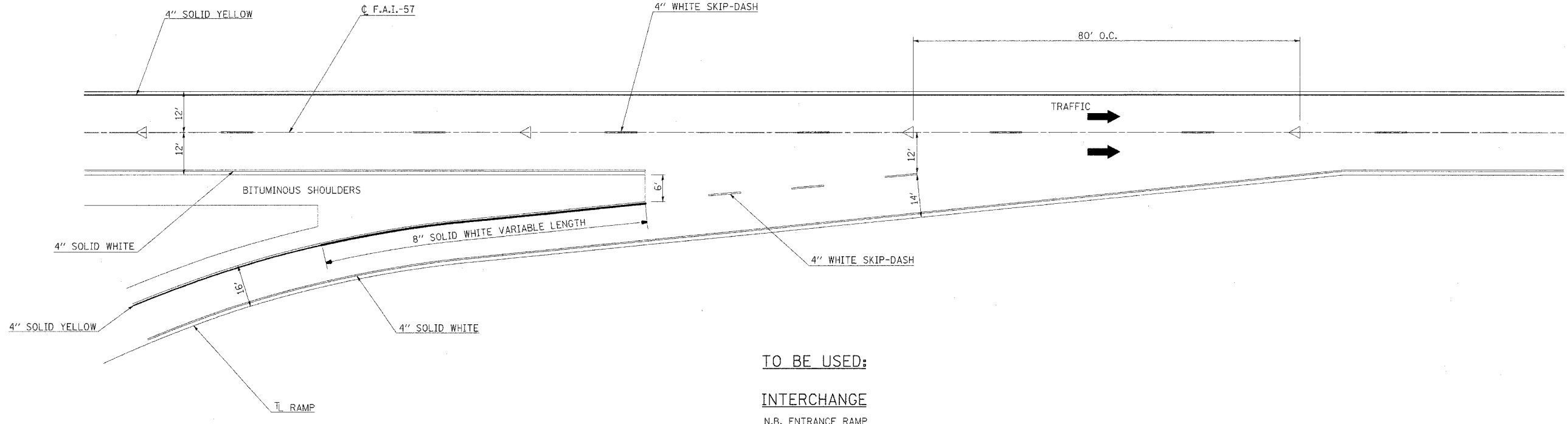


F.A.I. RTE.	SECTION	COUNTY	TOTAL SHEETS	SHEET NO.
57	*	WILLIAMSON	55	53

STA. _____ TO STA. _____
 FED. ROAD DIST. NO. _____ ILLINOIS FED. AID PROJECT

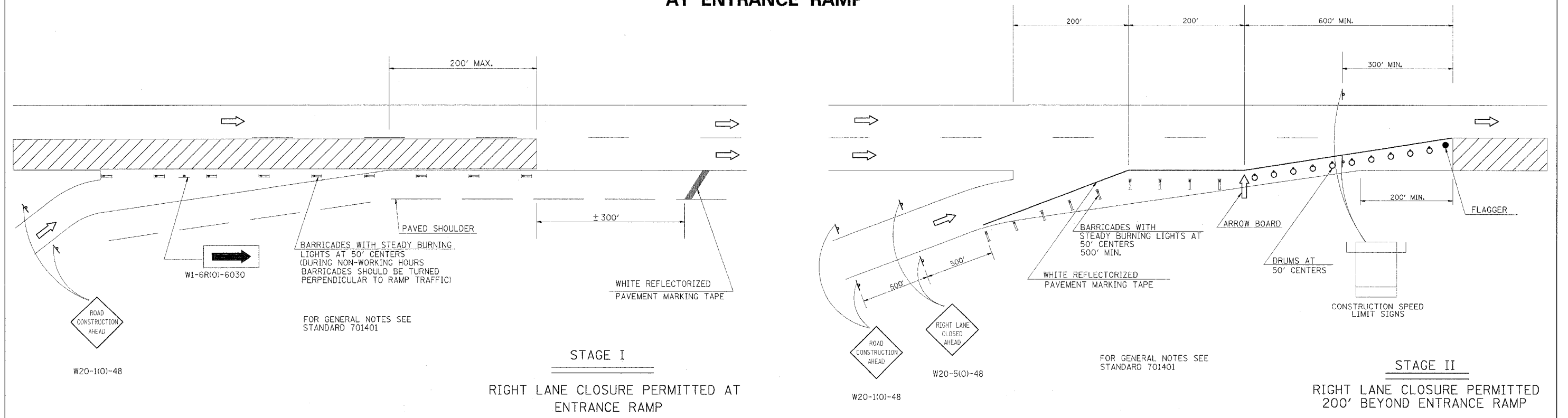
* CX1-(4,4-1,5,6,6-2) R-1

TYPICAL PAVEMENT MARKINGS AT ENTRANCE RAMP



TO BE USED:
INTERCHANGE
 N.B. ENTRANCE RAMP

DETAIL OF TRAFFIC CONTROL AT ENTRANCE RAMP



STAGE I
 RIGHT LANE CLOSURE PERMITTED AT
 ENTRANCE RAMP

STAGE II
 RIGHT LANE CLOSURE PERMITTED
 200' BEYOND ENTRANCE RAMP

FOR GENERAL NOTES SEE
 STANDARD 701401

FOR GENERAL NOTES SEE
 STANDARD 701401

DETAILS: PAVEMENT MARKING AND TRAFFIC CONTROL ON ENTRANCE RAMP

PLOT DATE = 8/18/2006
 FILE NAME = 04101605.dwg
 USER NAME = sheppardg