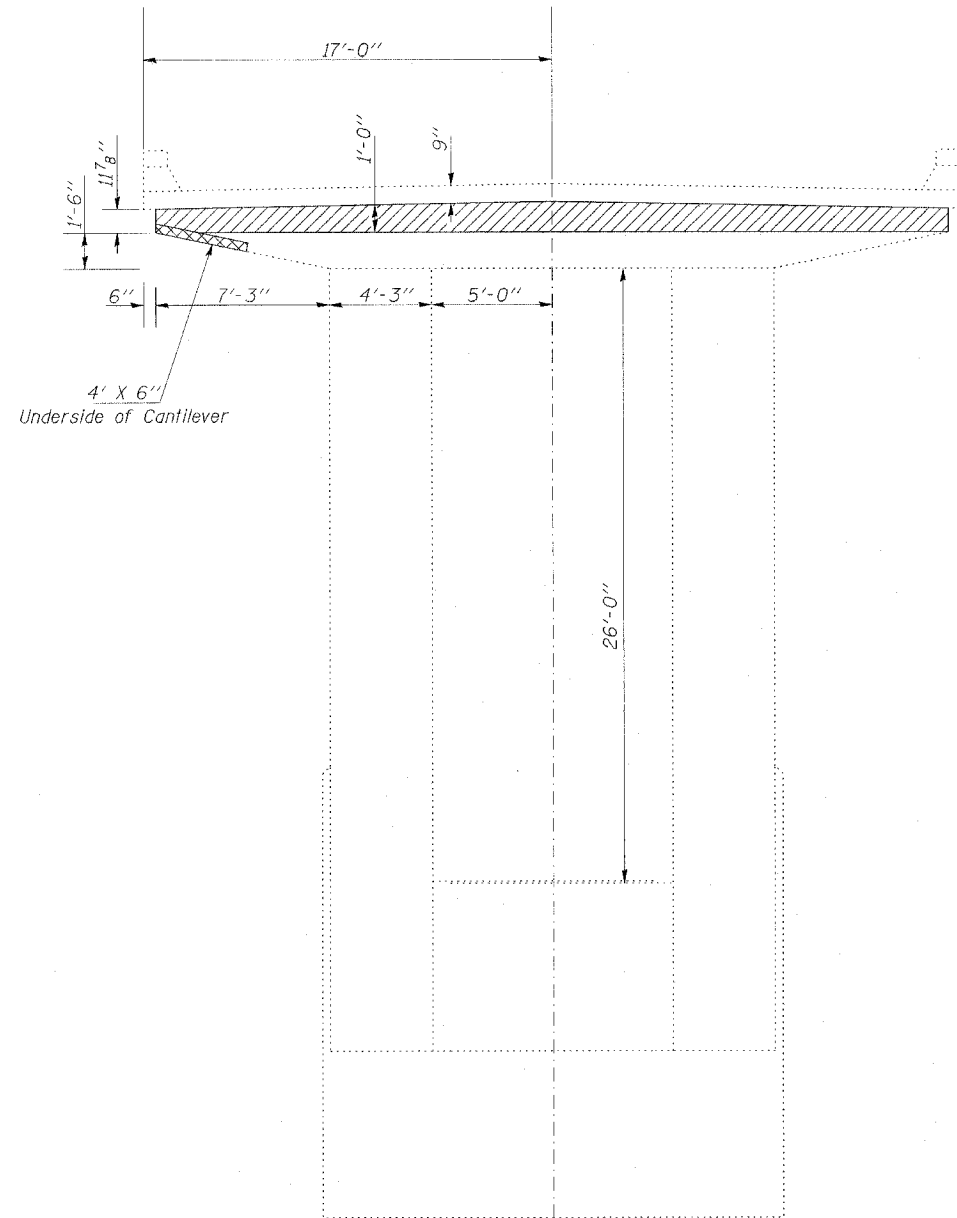


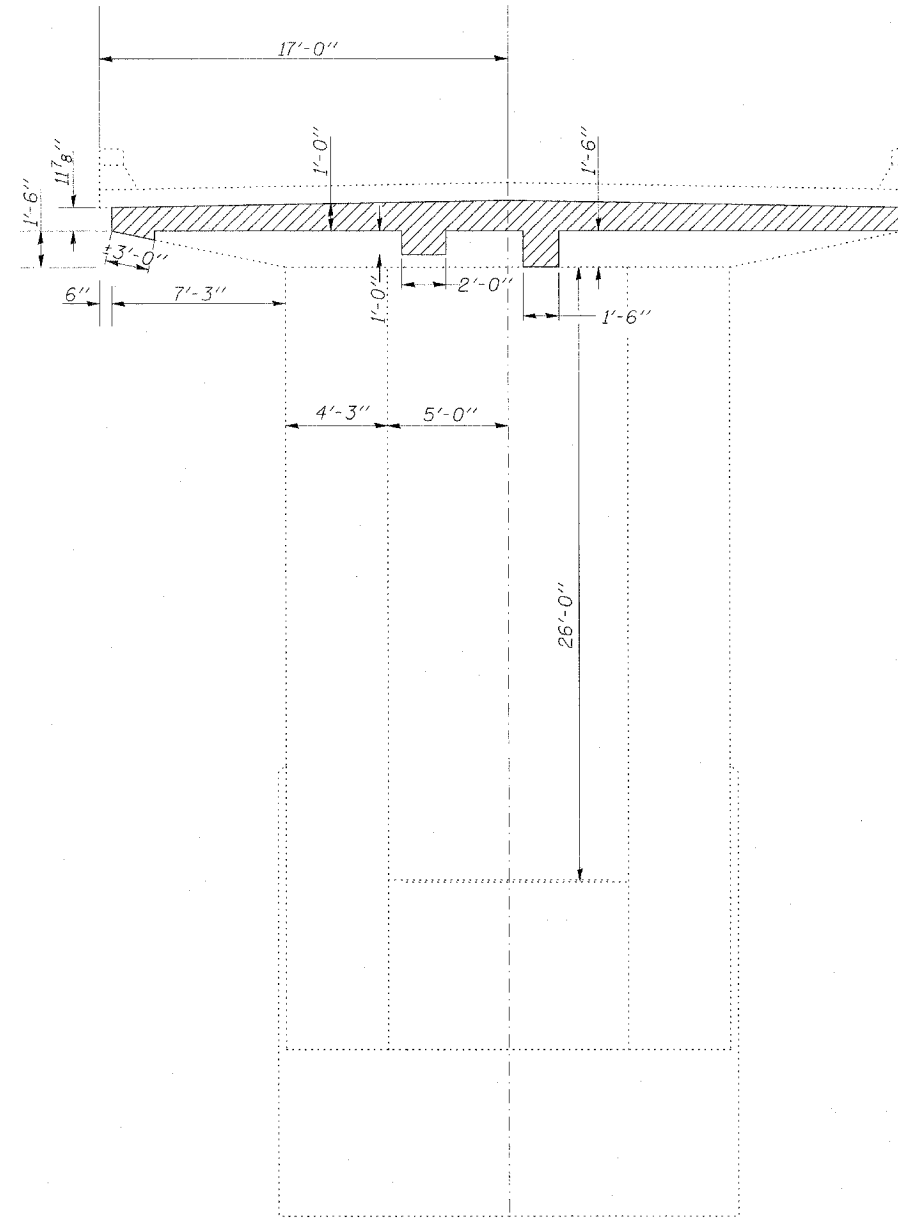
STATE OF ILLINOIS
DEPARTMENT OF TRANSPORTATION

F. A. REL.	SECTION	COUNTY	TOTAL SHEETS	SHEET NO.
885	*	POPE	16	14
STA. 709+74.60		TO STA. 714+62.27		
FED. ROAD DIST. NO.	ILLINOIS	FED. AID PROJECT		

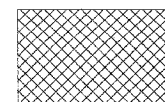
* - D-9 BSMART FY 07-1



Pier 1
(Looking East)



Pier 1
(Looking West)



Polymer Modified Portland
Cement Mortar



Structural Repair of Concrete

BILL OF MATERIAL

Item	Unit	Total
Polymer Modified Portland Cement Mortar	Sq. Ft.	2.0
Structural Repair of Concrete (< 5")	Sq. Ft.	72.0

CONCRETE REPAIRS (PIER 1)
ILL 146 OVER HILLS BRANCH
POPE COUNTY
STA. 712+18.3
SN 076-0007