

INDEX OF SHEETS

SHEET NO.	DESCRIPTION
1	COVER SHEET
2	INDEX OF SHEETS & STATE HIGHWAY STANDARDS
3	GENERAL NOTES
4-21	SUMMARY OF QUANTITIES
22-25	TYPICAL SECTIONS
26-31	SCHEDULE OF QUANTITIES
32	ALIGNMENTS, TIES AND BENCHMARKS
33-34	REMOVAL PLAN
35-38	PLAN AND PROFILE
39	PLAN PAVEMENT DETAILS AT INTERSECTION
40-41	DETOUR OF US RTE. 6 (159TH STREET)
42-54	MAINTENANCE OF TRAFFIC PLANS
55	EROSION AND SEDIMENT CONTROL NOTES
56-57	EROSION AND SEDIMENT CONTROL PLANS
58	EROSION CONTROL DETAILS
59-61	GRADING PLANS
62-65	DRAINAGE AND UTILITY PLANS
66-67	DRAINAGE TABLES
68-71	WATERMAIN PLANS
72-76	PLAT OF HIGHWAYS
77	INTERSECTION DETAILS
78-81	ADA RAMP DETAILS
82-85	PAVEMENT MARKING, SIGNING AND LANDSCAPING PLANS
86-87	TEMPORARY TRAFFIC SIGNAL INSTALLATION AND REMOVAL PLAN
88-93	TEMPORARY TRAFFIC SIGNAL INSTALLATION PLANS
94-97	TEMPORARY TRAFFIC SIGNAL INTERCONNECT PLANS
98-101	TRAFFIC SIGNAL PLANS AND DETAILS
102-105	TRAFFIC SIGNAL INTERCONNECT PLANS
106	TS-02 DISTRICT ONE MAST ARM MOUNTED STREET NAME SIGNS
107	TS-03 HANDHOLE TO INTERCEPT EXISTING CONDUIT
108-114	TS-05 DISTRICT ONE STANDARD TRAFFIC SIGNAL DESIGN DETAILS
115	TS-07 DISTRICT 1 - DETECTOR LOOP INSTALLATION DETAILS FOR ROADWAY RESURFACING
116-121	LIGHTING PLANS
121A	BE-300 LIGHT POLE FOUNDATION 30' TO 35' M.H. 1 1/2" BOLT CIRCLE
122	BE-301 LIGHT POLE FOUNDATION 40' TO 47 1/2' M.H. 1 1/2" BOLT CIRCLE
123	BE-701 LUMINAIRE SAFETY CABLE ASSEMBLY
124	BE-702 MISC. ELECTRICAL DETAILS SHEET A
125	BE-801 TEMPORARY AERIAL CABLE INSTALLATION
126-142	BOX CULVERT PLANS SN 016-2849
143	BD-02 DRIVEWAY DETAILS - DISTANCE BETWEEN R.O.W. AND FACE OF CURB < 15'
144	BD-07 DETAIL OF STORM SEWER CONNECTION TO EXISTING SEWER
145	BD-08 DETAILS FOR FRAMES AND LIDS ADJUSTMENT WITH MILLING
146	BD-22 PAVEMENT PATCHING FOR HMA SURFACED PAVEMENT
147	BD-24 CURB OR CURB AND GUTTER REMOVAL AND REPLACEMENT
148	BD-32 BUTT JOINT AND HMA TAPER DETAILS
149	BD-51 BENCHING DETAIL FOR EMBANKMENT WIDENING
150	TC-10 TRAFFIC CONTROL AND PROTECTION FOR SIDE ROADS, INTERSECTIONS AND DRIVEWAYS
151	TC-11 TYPICAL APPLICATIONS RAISED REFLECTIVE PAVEMENT MARKERS (SNOW-PLOW RESISTANT)
152	TC-13 DISTRICT ONE TYPICAL PAVEMENT MARKINGS
153	TC-14 TRAFFIC CONTROL AND PROTECTION AT TURN BAYS (TO REMAIN OPEN TO TRAFFIC)
154	TC-16 PAVEMENT MARKING LETTERS AND SYMBOLS FOR TRAFFIC STAGING
155	TC-21 DETOUR SIGNING FOR CLOSING STATE HIGHWAYS
156	TC-22 ARTERIAL ROAD INFORMATION SIGN
157	TC-26 DRIVEWAY ENTRANCE SIGNING
158-173	US RTE. 6 CROSS SECTIONS
174-178	IL RTE. 50 CROSS SECTIONS
179-184	MIDLOTHIAN CREEK CROSS SECTIONS

STATE HIGHWAY STANDARDS

STANDARD NO.	DESCRIPTION
000001-06	STANDARD SYMBOLS, ABBREVIATIONS AND PATTERNS
001001-02	AREAS OF REINFORCEMENT BARS
001006	DECIMAL OF AN INCH AND OF A FOOT
280001-07	TEMPORARY EROSION CONTROL SYSTEMS
424001-09	PERPENDICULAR CURB RAMPS FOR SIDEWALKS
424006-02	CURB RAMPS FOR SIDEWALKS, DIAGONAL
424021-03	DEPRESSED CORNER FOR SIDEWALKS
515001-03	NAME PLATE FOR BRIDGES
601001-05	PIPE UNDERDRAINS
602001-02	CATCH BASIN TYPE A
602011-02	CATCH BASIN TYPE C
602416-05	MANHOLE TYPE A 8' DIAMETER
602601-04	PRECAST REINFORCED CONCRETE FLAT SLAB TOP
602701-02	MANHOLE STEPS
604001-04	FRAME AND LIDS TYPE I
604036-03	GRATE TYPE 8
604091-03	FRAME AND GRATE TYPE 24
606001-06	CONCRETE CURB TYPE B AND COMBINATION CURB AND GUTTER
606301-04	PC CONCRETE ISLANDS AND MEDIANS
631011-10	TRAFFIC BARRIER TERMINAL, TYPE 2
631031-15	TRAFFIC BARRIER TERMINAL, TYPE 6
664001-02	CHAIN LINK FENCE
70101-05	OFF-ROAD OPERATIONS, MULTILANE, 15' TO 24" FROM PAVEMENT EDGE
701106-02	OFF-ROAD OPERATIONS, MULTILANE, MORE THAN 15' AWAY
701427-05	LANE CLOSURE, MULTILANE, INTERMITTENT OR MOVING OPER., FOR SPEEDS > 40 MPH
701601-09	URBAN LANE CLOSURE, MULTILANE, 1W OR 2W WITH NONTRAVERSABLE MEDIAN
701606-10	URBAN SINGLE LANE CLOSURE, MULTILANE, 2W WITH MOUNTABLE MEDIAN
701701-10	URBAN LANE CLOSURE, MULTILANE INTERSECTION
701801-06	SIDEWALK, CORNER OR CROSSWALK CLOSURE
701901-06	TRAFFIC CONTROL DEVICES
704001-08	TEMPORARY CONCRETE BARRIER
720001-01	SIGN PANEL MOUNTING DETAILS
720006-04	SIGN PANEL ERECTION DETAILS
720011-01	METAL POSTS FOR SIGNS, MARKERS & DELINEATORS
720016-03	MAST ARM MOUNTED STREET NAME SIGNS
725001-01	OBJECT AND TERMINAL MARKERS
729001-01	APPLICATIONS OF TYPES A & B METAL POSTS (FOR SIGNS & MARKERS)
780001-05	TYPICAL PAVEMENT MARKINGS
781001-04	TYPICAL APPLICATIONS RAISED REFLECTIVE PAVEMENT MARKERS
782006	GUARDRAIL AND BARRIER WALL REFLECTOR MOUNTING DETAILS
805001-01	ELECTRICAL SERVICE INSTALLATION DETAILS
814001-03	HANDHOLES
814006-02	DOUBLE HANDHOLES
862001-01	UNINTERRUPTABLE POWER SUPPLY (UPS)
873001-02	TRAFFIC SIGNAL GROUNDING & BONDING
877001-06	STEEL MAST ARM ASSEMBLY AND POLE 16' THROUGH 55'
877006-05	STEEL MAST ARM ASSEMBLY AND POLE WITH DUAL MAST ARMS
878001-10	CONCRETE FOUNDATION DETAILS
880001-01	SPAN WIRE MOUNTED SIGNALS AND FLASHING BEACON INSTALLATION
880006-01	TRAFFIC SIGNAL MOUNTING DETAILS
886001-01	DETECTOR LOOP INSTALLATIONS
886006-01	TYPICAL LAYOUTS FOR DETECTION LOOPS



COMMITMENTS

DETOUR: FROM THE DAY OF CLOSURE, US RTE. 6 (159TH ST.) MUST REOPEN TO ALL TRAFFIC WITHIN 60 CALENDAR DAYS.

FILE NAME: D:\Engineer\mg\live\Projects\60K73\60K73\CADD\CADD Sheets\01\0186073-5-Int-Index-11.dwg



USER NAME = johnn	DESIGNED - AB	REVISED - 09/11/2017 TGM
PLOT SCALE = 2.0000' / 1" =	DRAWN - AB	REVISED -
PLOT DATE = 9/11/2017	CHECKED - JMT	REVISED -
	DATE - 9/11/2017	REVISED -

**STATE OF ILLINOIS
DEPARTMENT OF TRANSPORTATION**

**INDEX OF SHEETS & STATE HIGHWAY STANDARDS
US ROUTE 6 (159TH ST.) AND IL ROUTE 50 (CICERO AVE.)**

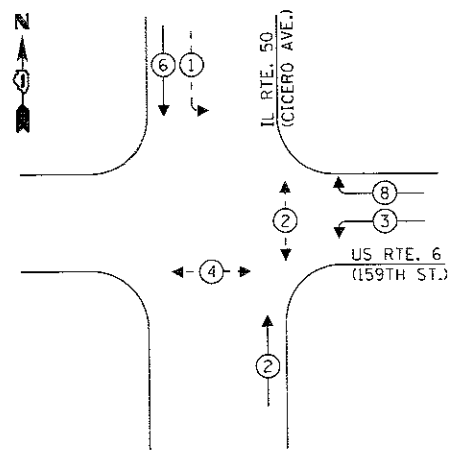
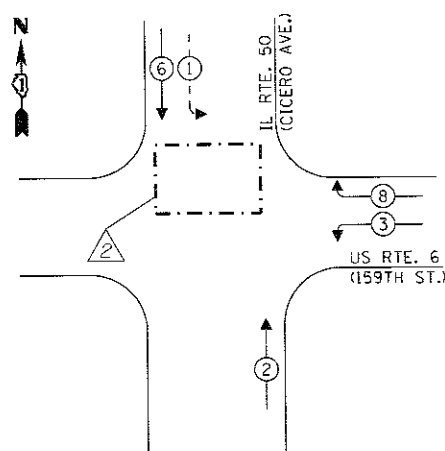
SCALE: SHEET OF SHEETS STA. TO STA.

F.A.P. RTE.	SECTION	COUNTY	TOTAL SHEETS	SHEET NO.
351	(537 & 3277-Z)B-1	COOK	184	2
				CONTRACT NO. 60K73
ILLINOIS FED. AID PROJECT				

REV 9-11-17

**TEMPORARY CONTROLLER
SEQUENCE - STAGE IA**

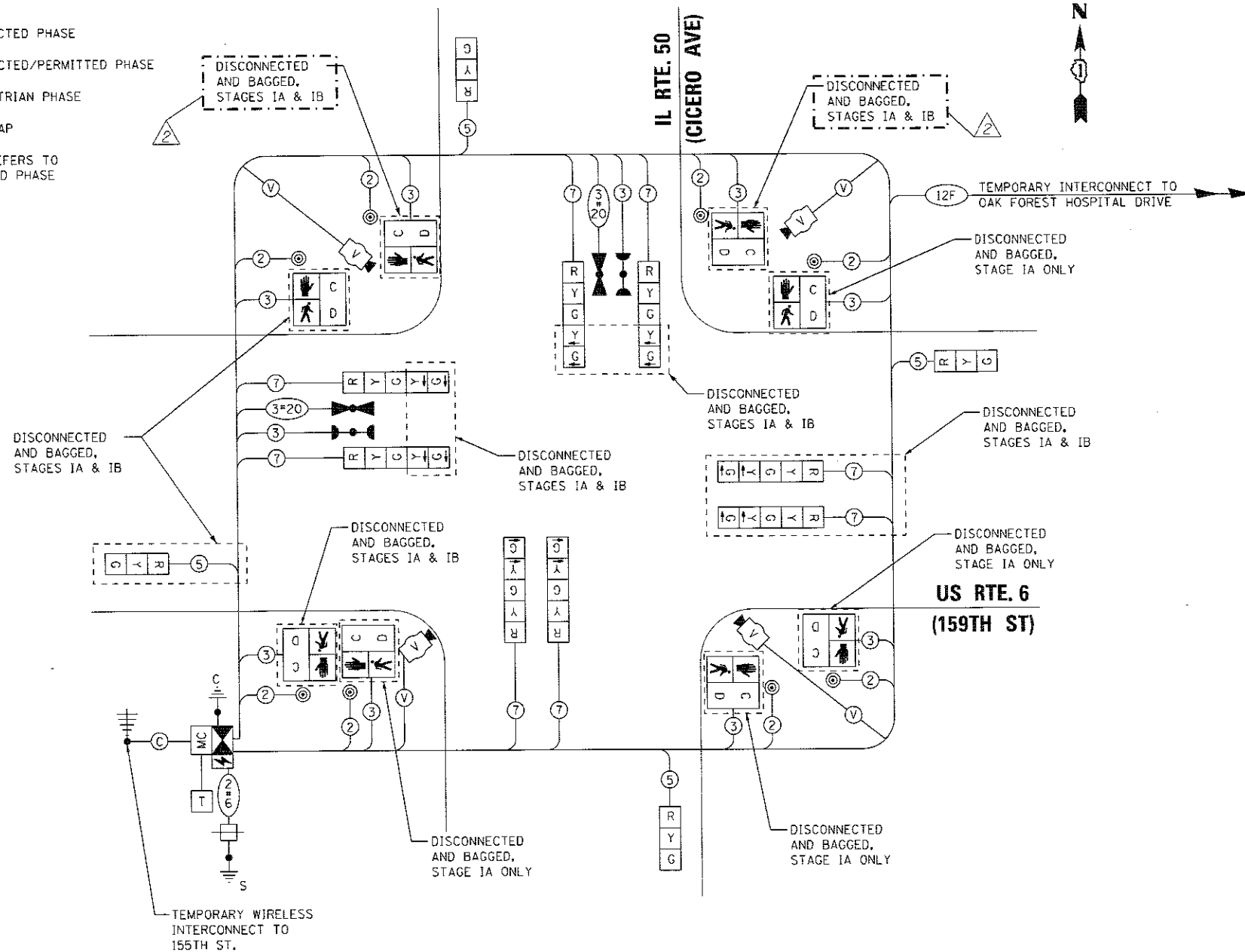
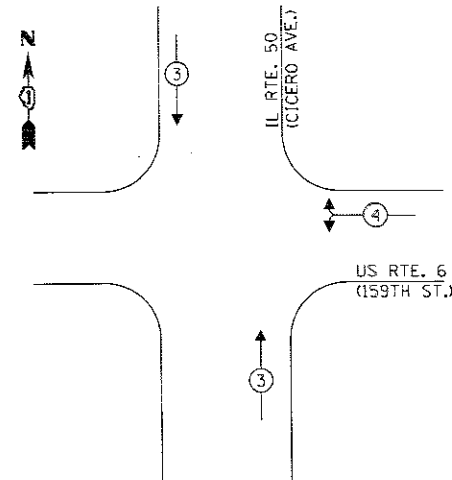
**TEMPORARY CONTROLLER
SEQUENCE - STAGE IB**



LEGEND:

- ← * → PROTECTED PHASE
- ← * - → PROTECTED/PERMITTED PHASE
- ← * → PEDESTRIAN PHASE
- ← OL → OVERLAP
- * NUMBER REFERS TO ASSOCIATED PHASE

**TEMPORARY EMERGENCY VEHICLE
PREEMPTION SEQUENCE - STAGES IA & IB**



TEMPORARY CABLE PLAN - STAGES IA & IB

NOT TO SCALE

NOTE:
THE TRAFFIC SIGNAL CONTROL EQUIPMENT
FOR THIS PROJECT SHALL BE "ECONOLITE"
TO MATCH THE EXISTING ADJACENT SYSTEM.

**TRAFFIC SIGNAL
ELECTRICAL SERVICE REQUIREMENTS**

TYPE	NO. OF LAMPS	LED WATTAGE	% OPERATION	TOTAL WATTAGE
SIGNAL (RED)	9	11	50	49.5
(YELLOW)	9	20	5	9.0
(GREEN)	9	12	45	48.6
PERMISSIVE ARROW	4	10	10	4.0
PED. SIGNAL	4	20	100	80.0
CONTROLLER	1	100	100	100.0
UPS	1	25	100	25.0
VIDEO SYSTEM	1	150	100	150.0
BLANK-OUT SIGN	-	25	5	-
FLASHER	-	-	50	-
STREET NAME SIGN	-	120	50	-
MASTER CONTROL	1	100	100	100.0
TOTAL =				566.1

ENERGY COSTS TO:
CITY OF OAK FOREST
15440 S. CENTRAL AVE.
OAK FOREST, IL 60452

ENERGY SUPPLY: CONTACT: LEONARD ANDERSON
PHONE: (708) 235-2346
COMPANY: COMMONWEALTH EDISON
ACCOUNT NUMBER: ---



USER NAME: johnn
DESIGNED: SAT
DRAWN: SAT
CHECKED: TGM
DATE: 9/11/2017
PLOT SCALE: 48,0000' / in.
PLOT DATE: 9/11/2017

REVISIONS:
REVISED: 09/11/2017 TGM
REVISED: -
REVISED: -
REVISED: -

STATE OF ILLINOIS
DEPARTMENT OF TRANSPORTATION

TEMPORARY CABLE PLAN, PHASE DESIGNATION DIAGRAM
AND EMERGENCY VEHICLE PREEMPTION SEQUENCE - STAGES IA & IB
US ROUTE 6 (159TH ST.) AT IL ROUTE 50 (CICERO AVE.)

SCALE: NONE SHEET OF SHEETS STA. TO STA.

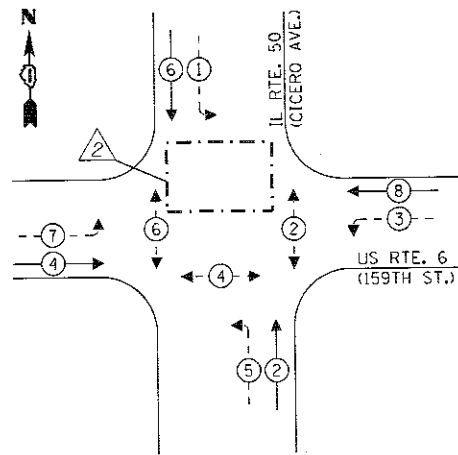
F.A.P. RTE.	SECTION	COUNTY	TOTAL SHEETS	SHEET NO.
351	(537 & 3277-2)B-1	COOK	184	90
CONTRACT NO. 60K73				ILLINOIS FED. AID PROJECT

TS 170
ECON 135

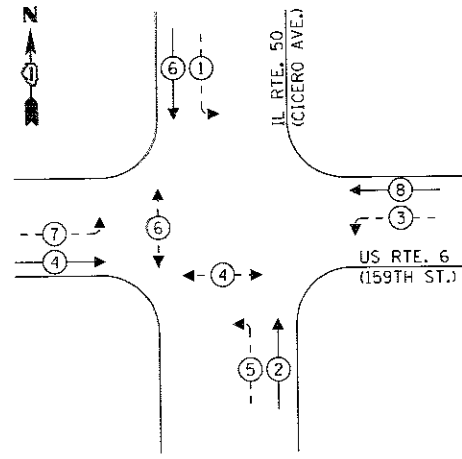
REV 9-11-17

FILE NAME: C:\Engineering\Level\Projects\3003\DOT\OVR\3003a - MO 3 Contract No. 60K73\CADD\CADD Sheets\Civil\DWG72-wt-TemporarySignalStage I.dgn

**TEMPORARY CONTROLLER
SEQUENCE - STAGE II**



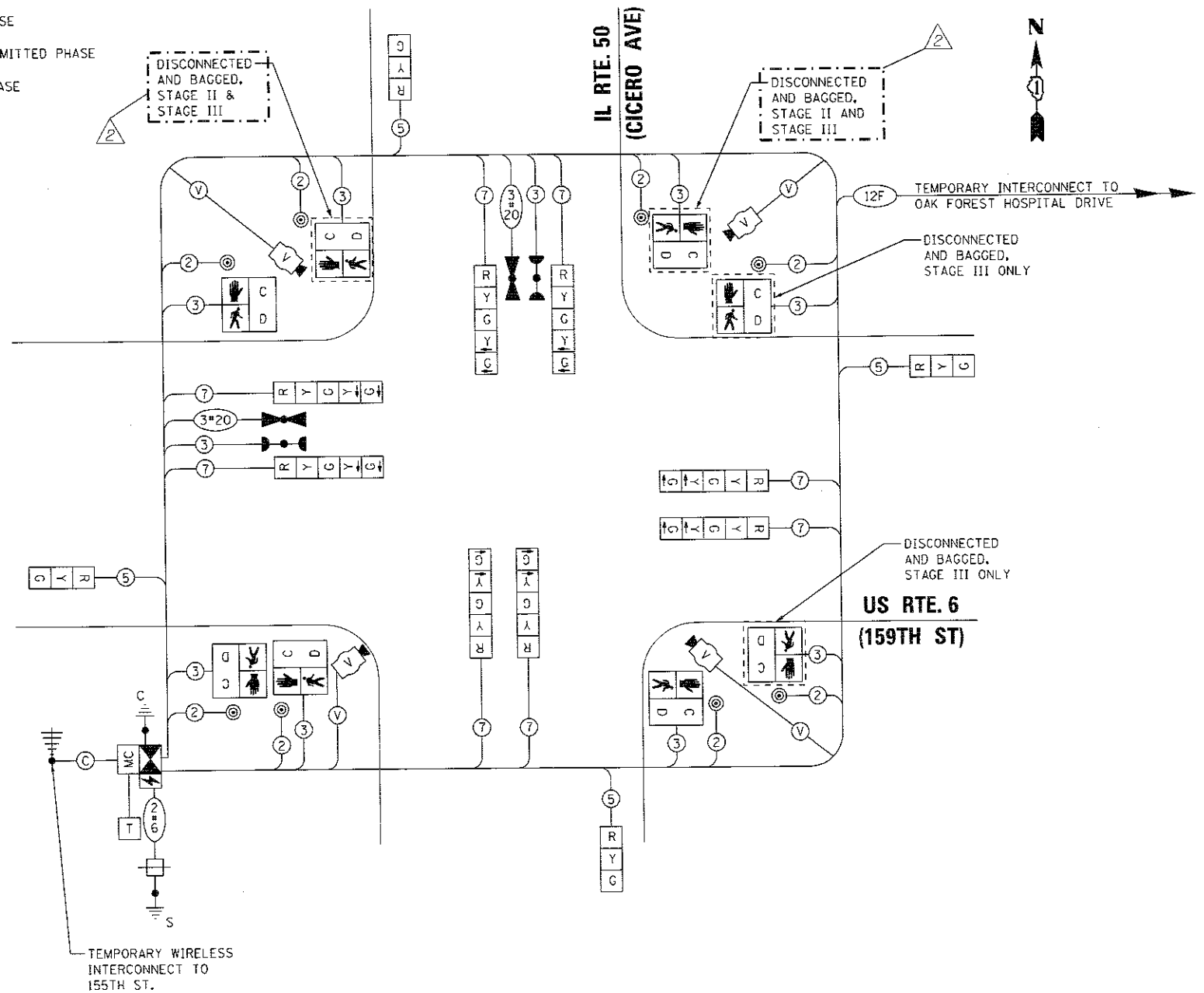
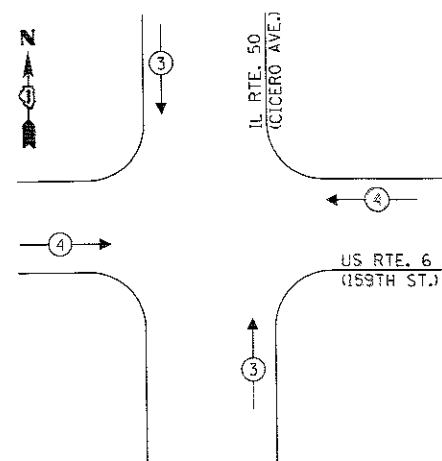
**TEMPORARY CONTROLLER
SEQUENCE - STAGE III**



LEGEND:

- ← ⊙ ← PROTECTED PHASE
- ← ⊙ ← PROTECTED/PERMITTED PHASE
- ← ⊙ → PEDESTRIAN PHASE
- ← ⊙ ← OVERLAP
- * NUMBER REFERS TO ASSOCIATED PHASE

**TEMPORARY EMERGENCY VEHICLE
PREEMPTION SEQUENCE - STAGES II & III**



TEMPORARY CABLE PLAN - STAGES II & III

NOT TO SCALE

NOTE:
THE TRAFFIC SIGNAL CONTROLLER EQUIPMENT FOR THIS PROJECT SHALL BE "ECONOLITE" TO MATCH THE EXISTING SYSTEM.

**TRAFFIC SIGNAL
ELECTRICAL SERVICE REQUIREMENTS**

TYPE	NO. OF LAMPS	LED WATTAGE	% OPERATION	TOTAL WATTAGE
SIGNAL (RED)	12	11	50	66.0
(YELLOW)	120	20	5	12.0
(GREEN)	12	12	45	64.8
PERMISSIVE ARROW	16	10	10	16.0
PED. SIGNAL	6	20	100	120.0
CONTROLLER	1	100	100	100.0
UPS	1	25	100	25.0
VIDEO SYSTEM	1	150	100	150.0
BLANK-OUT SIGN	-	25	5	-
FLASHER	-	-	50	-
STREET NAME SIGN	-	120	50	-
MASTER CONTROL	1	100	100	100.0
TOTAL =				653.8

ENERGY COSTS TO:

CITY OF OAK FOREST
15440 S. CENTRAL AVE.
OAK FOREST, IL 60452

ENERGY SUPPLY: CONTACT: LEONARD ANDERSON
PHONE: (708) 235-2346
COMPANY: COMMONWEALTH EDISON
ACCOUNT NUMBER: ---



USER NAME = johnn	DESIGNED - SAT	REVISED - 09/11/2017 TGM
PLOT SCALE = 40,0000' / 1in.	DRAWN - SAT	REVISED -
PLOT DATE = 9/11/2017	CHECKED - TGM	REVISED -
	DATE - 9/11/2017	REVISED -

STATE OF ILLINOIS
DEPARTMENT OF TRANSPORTATION

TEMPORARY CABLE PLAN, PHASE DESIGNATION DIAGRAM AND
EMERGENCY VEHICLE PREEMPTION SEQUENCE - STAGES II & III
US ROUTE 6 (159TH ST.) AT IL ROUTE 50 (CICERO AVE.)

SCALE: NONE SHEET OF SHEETS STA. TO STA.

F.A.P. RTE.	SECTION	COUNTY	TOTAL SHEETS	SHEET NO.
351	(537 & 3277-216-1)	COOK	184	93
				CONTRACT NO. 60K73

TS 170
ECON 135

REV 9-11-17

FILE NAME: C:\Engineering\Live\Projects\13003\DOT\DIR\13003 - MD 3\Contract No. 60K73\CAD\CAD00\Sheets\13003\13003-TemporarySignalStage-2k3.dgn