

STATE OF ILLINOIS
DEPARTMENT OF TRANSPORTATION

F.A.U. RTE.	SECTION	COUNTY	TOTAL SHEETS	SHEET NO.
6176	(79-R-VB,F)BRR	KANKAKEE	19	1
		ILLINOIS	CONTRACT NO. 66H19	

INDEX OF SHEETS

1. COVER SHEET
2. GENERAL NOTES
- 3-4. SUMMARY OF QUANTITIES
- 5-6. TYPICAL SECTIONS
7. SCHEDULES
- 8-9. TRAFFIC CONTROL AND PROTECTION, STANDARD 701611
10. PAVEMENT MARKING
- 11-17. STRUCTURE REPAIR PLANS
- 18-19. DETAILS

STANDARDS

- | | |
|-----------|--|
| 000001-06 | STANDARD SYMBOLS, ABBREVIATIONS AND PATTERNS |
| 001001-02 | AREAS OF REINFORCEMENT BARS |
| 001006 | DECIMAL OF AN INCH AND OF A FOOT |
| 701101-05 | OFF-ROAD OPERATIONS, MULTILANE, 15' (4.5 m) TO 24' (600 mm) FROM PAVEMENT EDGE |
| 701106-02 | OFF-ROAD OPERATIONS, MULTILANE, MORE THAN 15' (4.5 m) AWAY |
| 701427-05 | LANE CLOSURE, MULTILANE INTERMITTENT OR MOVING OPERATION, FOR SPEEDS ≤ 40 MPH |
| 701606-10 | URBAN LANE CLOSURE, MULTILANE, 2W WITH MOUNTABLE MEDIAN |
| 701901-06 | TRAFFIC CONTROL DEVICES |
| 701611-07 | URBAN HALF ROAD CLOSURE, MULTILANE, 2W WITH MOUNTABLE MEDIAN |

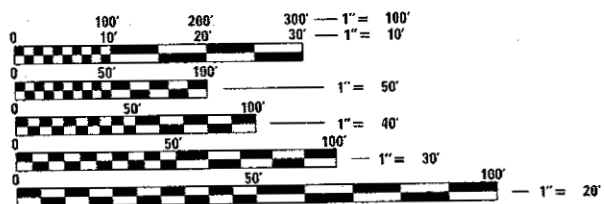
PROPOSED
HIGHWAY PLANS

F.A.U. ROUTE 6176 (ARMOUR RD.)
SECTION (79-R-VB,F)BRR
BRIDGE REPAIRS
KANKAKEE COUNTY
C-93-042-17



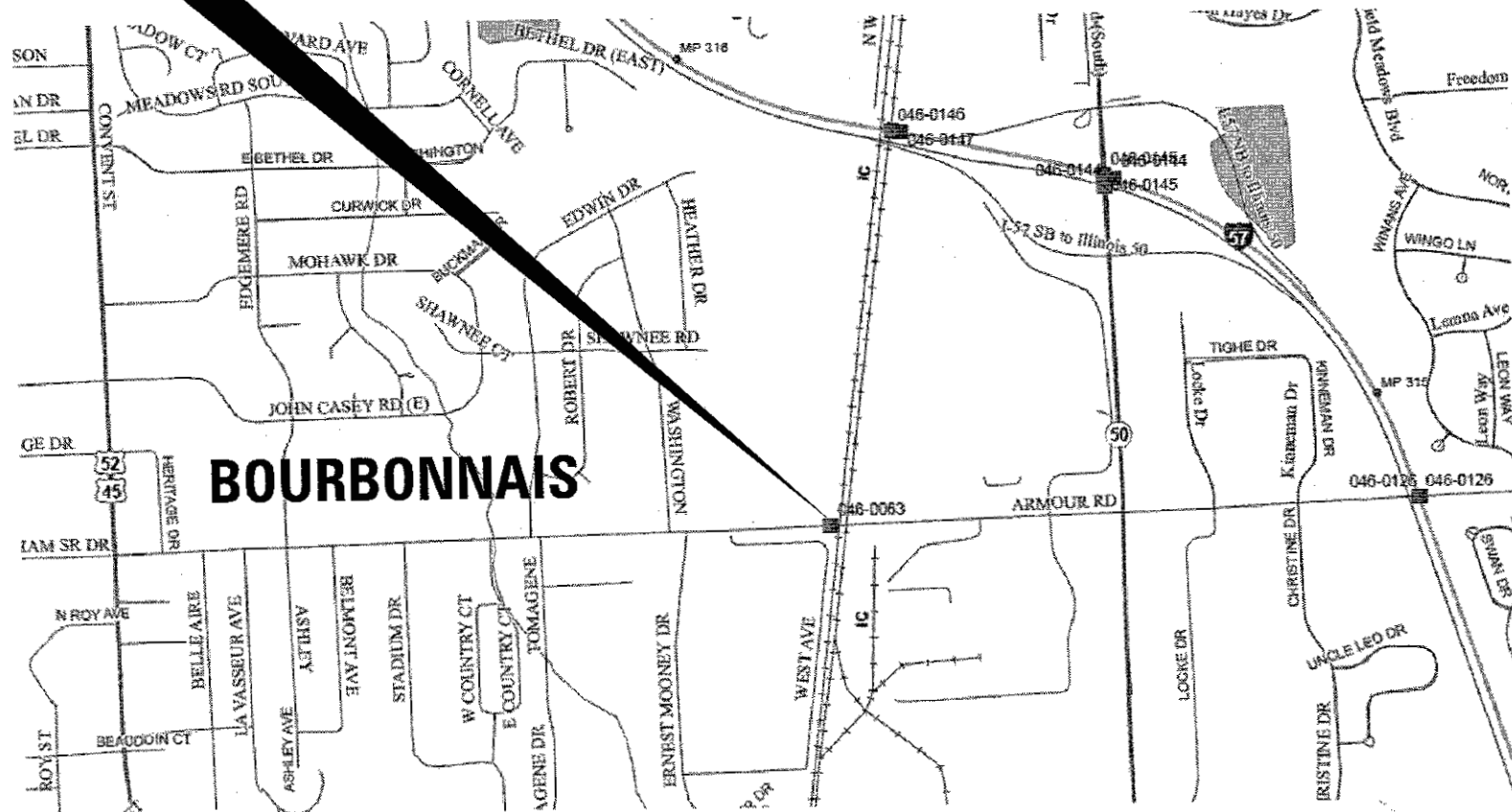
PROJECT LOCATION

STRUCTURE NO. 046-0063
CARRYING FAS 1305 (ARMOUR RD.)
OVER THE ILLINOIS CENTRAL RAILROAD (ICRR)
APPROXIMATELY 0.3 MILES WEST OF IL 50 IN BOURBONNAIS



FULL SIZE PLANS HAVE BEEN PREPARED USING STANDARD ENGINEERING SCALES. REDUCED SIZED PLANS WILL NOT CONFORM TO STANDARD SCALES IN MAKING MEASUREMENTS ON REDUCED PLANS, THE ABOVE SCALES MAY BE USED.

J.U.L.I.E.
JOINT UTILITY LOCATION INFORMATION FOR EXCAVATION
1-800-892-0123
OR 811



POINT LOCATION

LOCATION OF SECTION INDICATED THUS: — ■ —

FUNCTIONAL CLASSIFICATION
URBAN - MINOR ARTERIAL
F.A.S. ROUTE 1305 (ARMOUR RD.)
2015 ADT 18600

P.V. 90.9% S.U. 6.7% M.U. 2.4%

STATE OF ILLINOIS
DEPARTMENT OF TRANSPORTATION

SUBMITTED July 11 2017
[Signature]
REGIONAL ENGINEER

Aug 18 2017
[Signature]
ENGINEER OF DESIGN AND ENVIRONMENT

Aug 18 2017
[Signature]
DIRECTOR OF PROGRAM DEVELOPMENT

PRINTED BY THE AUTHORITY
OF THE STATE OF ILLINOIS

PROJECT ENGINEER: JOE KANNEL P.E.
UNIT CHIEF: RON WOODSHANK
DISTRICT 3 NO. (815) 434-6131
CONTRACT NO. 66H19

GENERAL NOTES

FOR STABILIZATION, ALL TYPE III BARRICADES WILL REQUIRE A MINIMUM OF FOUR SAND BAGS PER BARRICADE.

ANY REFERENCE TO A STANDARD IN THESE PLANS SHALL BE INTERPRETED TO MEAN THE EDITION AS INDICATED BY THE SUBNUMBER SHOWN IN THE LIST OF STANDARDS OR THE COPY INCLUDED IN THESE PLANS.

THE FOLLOWING RATES OF APPLICATION HAVE BEEN USED IN CALCULATING PLAN QUANTITIES:

SHORT TERM PAVEMENT MARKING	10	FT /100 FT OF APPLICATION
-----------------------------	----	---------------------------

THE CONTRACTOR SHALL CONTACT JULIE AT LEAST 48 HOURS PRIOR TO EXCAVATION TO DETERMINE WHICH UTILITIES ARE IN THE AREA.

COMMITMENTS

STATE OF ILLINOIS
DEPARTMENT OF TRANSPORTATION
DISTRICT THREE
AS BUILT INFORMATION

SUPERVISING CONSTRUCTION FIELD ENGINEER

RESIDENT ENGINEER / TECHNICIAN

START & END DATES
OF CONSTRUCTION: _____

INSPECTORS: _____

STATE OF ILLINOIS
DEPARTMENT OF TRANSPORTATION
DISTRICT THREE

REVIEWED BY: David Brunick
DISTRICT STUDIES & PLANS ENGINEER

DATE: 07/11/17

EXAMINED BY: [Signature]
DISTRICT CONSTRUCTION ENGINEER

Michael A. Stot
DISTRICT MATERIALS ENGINEER

[Signature]
DISTRICT OPERATIONS ENGINEER

FILE NAME =	USER NAME = woodshankr1	DESIGNED - RW	REVISED -
p:\11084EBID\INTEG.Illinois.gov\FWIDT\Documents\DOT Offices\District 3\Projects\0364-DRAWING\66H19-RW\la.sgn		CHECKED - EP	REVISED -
Default	PLOT DATE = 6/21/2017	DATE - 4/18/2017	REVISED -

STATE OF ILLINOIS
DEPARTMENT OF TRANSPORTATION

SUMMARY OF UTILITIES

SCALE: SHEET 1 OF 8 SHEETS STA. TO STA.

F.A.U. RTE.	SECTION	COUNTY	TOTAL SHEETS	SHEET NO.
6176	(79-R-VB,F)BRR	KANKAKEE	19	2
CONTRACT NO. 66H19			ILLINOIS FED. AID PROJECT	

CODE NO.	ITEM	UNIT	TOTAL QUANTITY	CONSTR. CODE
				CONTRACT MAINT.
				100% STATE ✓
				BRIDGE
				0014 ✓
				S.N. 046-0063
50102400	CONCRETE REMOVAL	CU YD	17.8	17.8
50300255	CONCRETE SUPERSTRUCTURE	CU YD	17.8	17.8
50500405	FURNISHING AND ERECTING STRUCTURAL STEEL	POUND	910	910
50800205	REINFORCEMENT BARS, EPOXY COATED	POUND	2800	2800
50800515	BAR SPLICERS	EACH	12	12
52000110	PREFORMED JOINT STRIP SEAL	FOOT	132	132
67100100	MOBILIZATION	LSUM	1	1
70102625	TRAFFIC CONTROL AND PROTECTION, STANDARD 701606	LSUM	1	1
70300100	SHORT TERM PAVEMENT MARKING	FOOT	708	708
70300150	SHORT TERM PAVEMENT MARKING REMOVAL	SQ FT	3439	3439
70300220	TEMPORARY PAVEMENT MARKING - LINE 4"	FOOT	6876	6876
* 78003100	PREFORMED PLASTIC PAVEMENT MARKING, TYPE B - LETTERS AND SYMBOLS	SQ FT	140	140
* 78003180	PREFORMED PLASTIC PAVEMENT MARKING, TYPE B - LINE 24"	FOOT	86	86
* 78008210	POLYUREA PAVEMENT MARKING TYPE I - LINE 4"	FOOT	9675	9675

URBAN

19 *SPECIALITY ITEMS

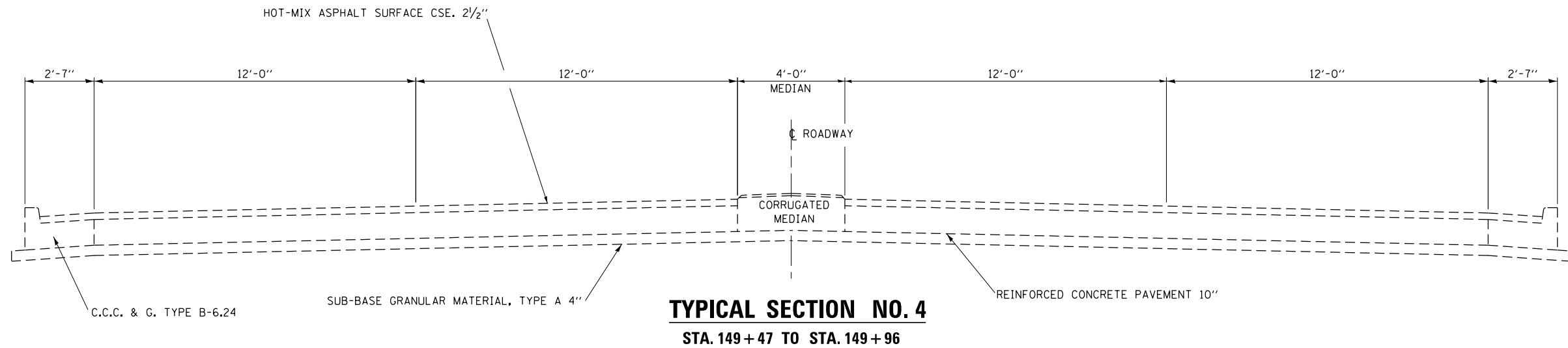
FILE NAME =	USER NAME = woodshenkr1	DESIGNED - RW	REVISED -	STATE OF ILLINOIS DEPARTMENT OF TRANSPORTATION	SUMMARY OF QUANTITIES			F.A.I.L. RTE.	SECTION	COUNTY	TOTAL SHEETS	SHEET NO.
pe:\IL084EB\INTEG\illinois.gov\PWIDOT\Documents\DOT Offices\District 3\Projects\036-DRAWING\046\046.dgn	PLLOT SCALE = 100.0000' / in.	CHECKED - EP	REVISED -					6176	(79-R-VB,FIBRR)	KANKAKEE	19	3
Default	PLLOT DATE = 6/21/2017	DATE - 4/18/2017	REVISED -		SCALE:	SHEET 1 OF 2 SHEETS	STA.	TO STA.	ILLINOIS FED. AID PROJECT			
								CONTRACT NO. 66H19				

REV

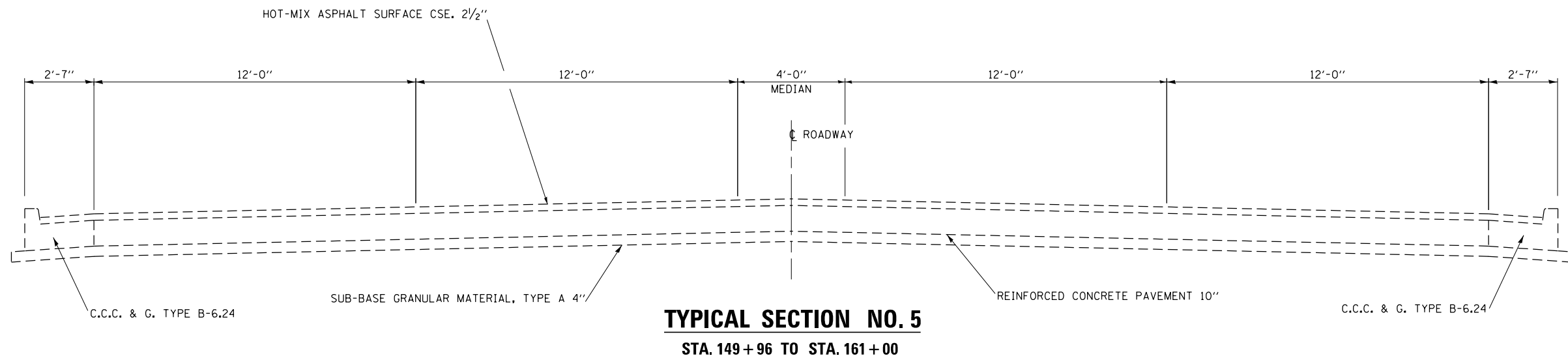
URBAN

CODE NO.	ITEM	UNIT	TOTAL QUANTITY	CONSTR. CODE
				CONTRACT MAINT. 100% STATE BRIDGE 0014 S.N. 046-0063
* 78008230	POLYUREA PAVEMENT MARKING TYPE I - LINE 6"	FOOT	1348	1348
* 78008240	POLYUREA PAVEMENT MARKING TYPE I - LINE 8"	FOOT	394	394
* 78008250	POLYUREA PAVEMENT MARKING TYPE I - LINE 12"	FOOT	305	305
* 78100300	REPLACEMENT REFLECTOR	EACH	287	287
X0327980	PAVEMENT MARKING REMOVAL - WATER BLASTING	SQ FT	3439	3439
X7012636	TRAFFIC CONTROL AND PROTECTION, STANDARD 701611	LSUM	1	1
X7830050	RAISED REFLECTIVE PAVEMENT MARKER, REFLECTOR REMOVAL	EACH	287	287
* X7830060	GROOVING FOR RECESSED PAVEMENT MARKING, LETTERS AND SYMBOLS	SQ FT	255	255
* X7830090	GROOVING FOR RECESSED PAVEMENT MARKING 25"	FOOT	98	98
Z0001903	STRUCTURAL STEEL REMOVAL	POUND	870	870
Z0001905	STRUCTURAL STEEL REPAIR	POUND	730	730
Z0021904	SILICONE JOINT SEALER, 1"	FOOT	4	4
Z0030850	TEMPORARY INFORMATION SIGNING	SQ FT	42	42
Z0048665	RAILROAD PROTECTIVE LIABILITY INSURANCE	LSUM	1	1

14 *SPECIALITY ITEMS



NOTE
STRUCTURE 046-0063
STA. 147+69 TO STA. 149+47



FILE NAME =	USER NAME = woodshankr1	DESIGNED - RW	REVISED -	STATE OF ILLINOIS DEPARTMENT OF TRANSPORTATION	TYPICAL SECTIONS			F.A.U. RTE.	SECTION	COUNTY	TOTAL SHEETS	SHEET NO.
pw:\IL\084EBIDINTEG.illinois.gov\PWIDOT\Documents\DOT Offices\District 3\Projects\0366\DRAWING\066H19-RW\066H19-RW.dgn								6176	(79-R-VB,F)BRR	KANKAKEE	19	6
Default	PLOT SCALE = 100.0000' / 1in.	CHECKED - EP	REVISED -		SCALE: SHEET 2 OF 2 SHEETS STA. TO STA.			ILLINOIS FED. AID PROJECT				
	PLOT DATE = 6/21/2017	DATE - 4/18/2017	REVISED -									

SCHEDULES - PAVEMENT MARKING

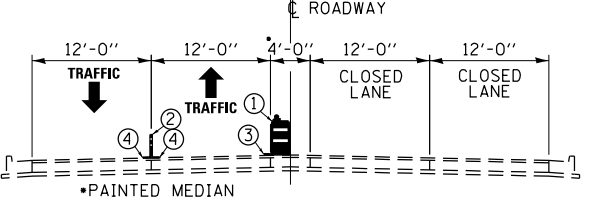
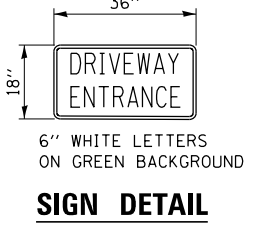
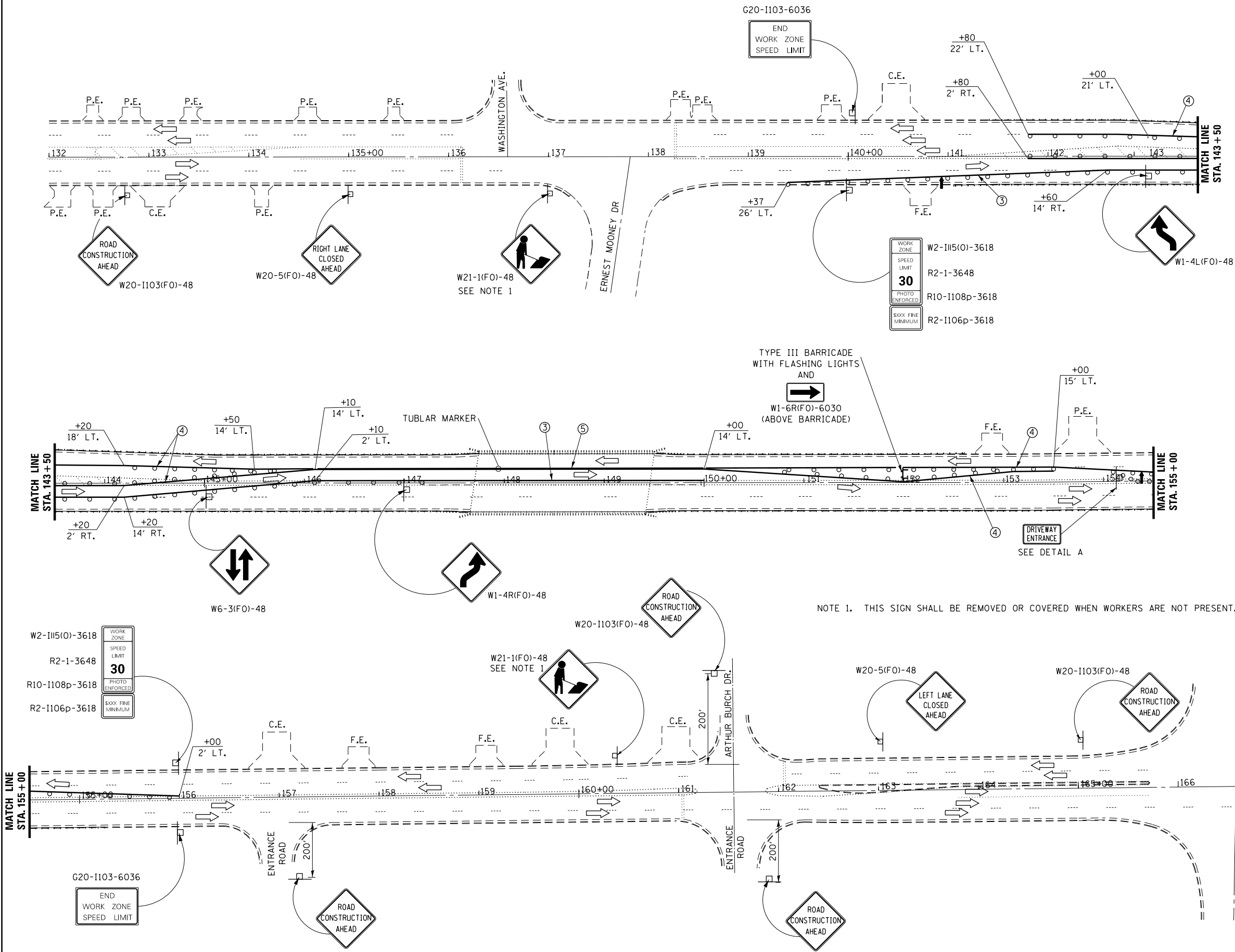
LOCATION			SHORT TERM PAVEMENT MARKING		TEMPORARY PAVEMENT MARKING LINE 4"		POLYUREA PAVEMENT MARKING TYPE I LINE 4"		POLYUREA PAVEMENT MARKING TYPE I LINE 6"	POLYUREA PAVEMENT MARKING TYPE I LINE 8"	POLYUREA PAVEMENT MARKING TYPE I LINE 12"	PREFORMED PLASTIC PAVEMENT MARKING TYPE B L&S		PREFORMED PLASTIC PAVEMENT MARKING TYPE B 24"	GROOVING FOR RECESSED PAVEMENT MARKING L&S		GROOVING FOR RECESSED PAVEMENT MARKING 25'
			FOOT		FOOT		FOOT		FOOT	FOOT	FOOT	FOOT	SQ FT		FOOT	SQ FT	
STA.	-	STA.	STAGE	YELLOW	WHITE	YELLOW	WHITE	YELLOW	WHITE	WHITE	WHITE	YELLOW	WHITE	WHITE			
139+37	-	156+00	STAGE I	503	192	2592	1062										
139+37	-	156+00	STAGE II		13	2241	981	6824	2851	1348	394	305	140	86	140		86
SUBTOTALS				503	205	4833	2043										
TOTALS				708		6876		9675		1348	394	305	140	86	140		86

SCHEDULES - PAVEMENT MARKER

LOCATION			REPLACEMENT REFLECTOR		RAISED REFLECTIVE PAVEMENT MARKER REFLECTOR REMOVAL	
			EACH		EACH	
STA. - STA.			2 WAY	1 WAY		
			AMBER	CRYSTAL	WHITE	
#REFΔ	-	#REFΔ	STAGE II	139	148	287
TOTALS			287		287	

SCHEDULE - PAVEMENT MARKING REMOVAL

LOCATION	PAVEMENT MARKING REMOVAL WATER-BLASTING				SHORT TERM PAVEMENT MARKING REMOVAL
	SQ FT				
	EXISTING STRIPING			TEMPORARY STRIPING	
	4" LINE	6" LINE	12" LINE	4" LINE	
STAGE I	612	240	194	1206	70
STAGE II		123		1064	2
SUBTOTALS	1169			2270	
TOTAL	3439				72

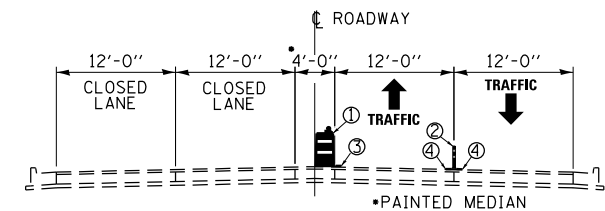
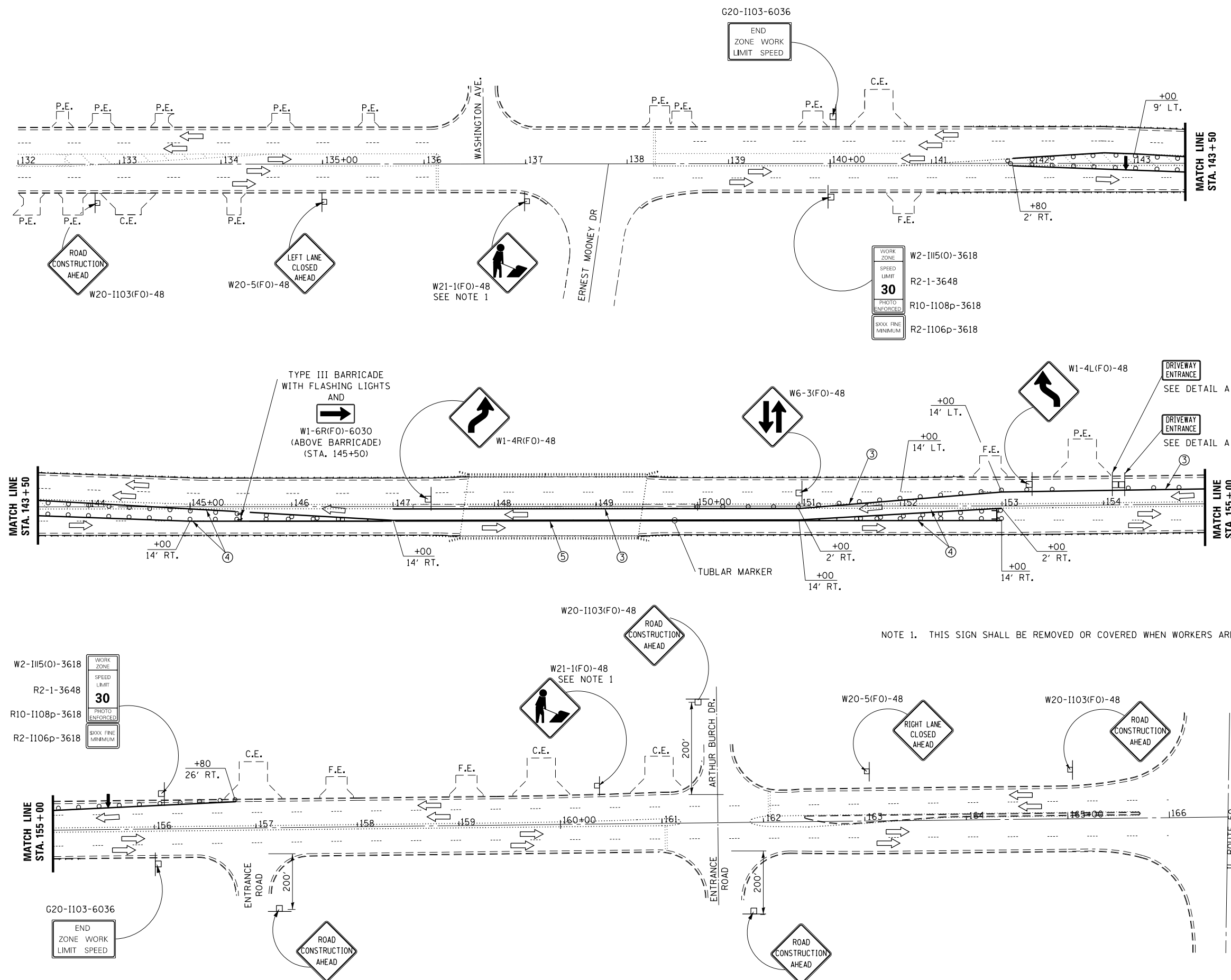


- LEGEND**
- ① TRAFFIC CONTROL DRUM WITH STEADY BURNING LIGHT
 - ② TUBULAR MARKER
 - ③ TEMPORARY PAVEMENT MARKING LINE 4" (WHITE)
 - ④ TEMPORARY PAVEMENT MARKING LINE 4" (YELLOW)
 - ⑤ TEMPORARY PAVEMENT MARKING LINE 4" (DOUBLE YELLOW)

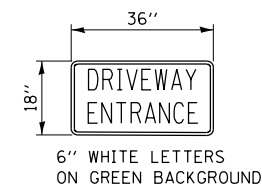
- SYMBOLS**
- ↑ ARROW BOARD
 - DRUM WITH STEADY BURNING LIGHT
 - SIGN ON PORTABLE OR PERMANENT SUPPORT
 - ▨ WORK AREA
 - ⊕ BARRICADE OR DRUM WITH FLASHING LIGHT
 - ⊙ TYPE III BARRICADE WITH FLASHING LIGHTS
 - TUBULAR MARKER

NOTE 1. THIS SIGN SHALL BE REMOVED OR COVERED WHEN WORKERS ARE NOT PRESENT.

FILE NAME =	USER NAME = woodshankr1	DESIGNED - RW	REVISED -	STATE OF ILLINOIS DEPARTMENT OF TRANSPORTATION	TRAFFIC CONTROL AND PROTECTION, STANDARD 701611 - STAGE I CONSTRUCTION	F.A.U. RTE.	SECTION	COUNTY	TOTAL SHEETS	SHEET NO.
pw:\IL\084EBIDINTEG.illinois.gov\PI\DOT\Documents\DOT Offices\District 3\Projects\0366\DRAWING\66H19-BW\d1s.dgn	PLOT SCALE = 100.0000' / in.	CHECKED - EP	REVISED -			6176	(79-R-VB,F)BRR	KANKAKEE	19	8
Default	PLOT DATE = 6/21/2017	DATE - 4/18/2017	REVISED -			CONTRACT NO. 66H19			ILLINOIS FED. AID PROJECT	
						SCALE:	SHEET 1 OF 1 SHEETS	STA.	TO STA.	



CROSS SECTION
STA. 147+00 TO STA. 150+00



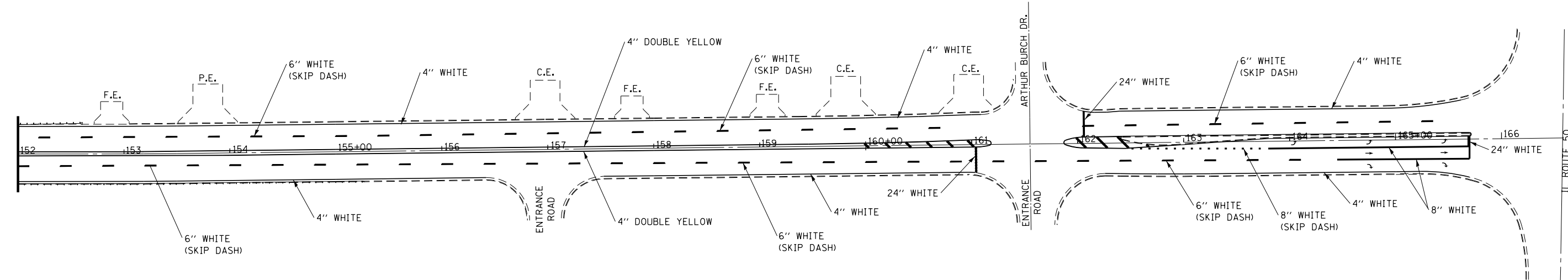
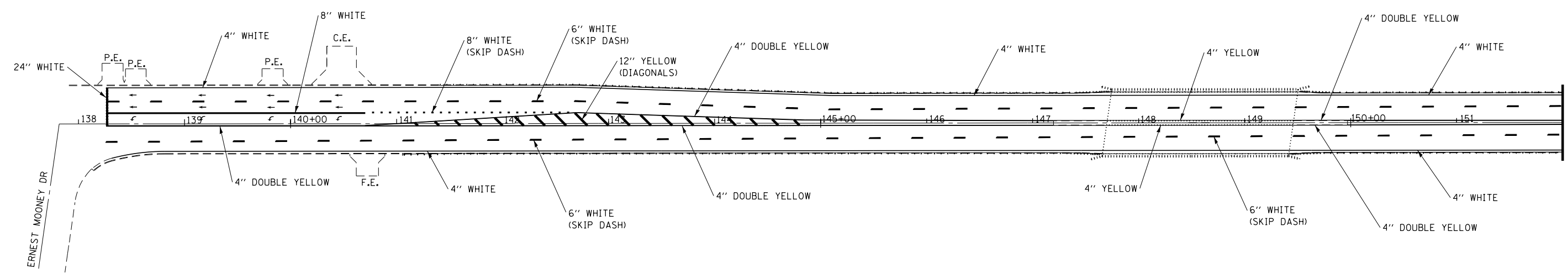
SIGN DETAIL A

- LEGEND**
- ① TRAFFIC CONTROL DRUM WITH STEADY BURNING LIGHT
 - ② TUBULAR MARKER
 - ③ TEMPORARY PAVEMENT MARKING LINE 4" (WHITE)
 - ④ TEMPORARY PAVEMENT MARKING LINE 4" (YELLOW)
 - ⑤ TEMPORARY PAVEMENT MARKING LINE 4" (DOUBLE YELLOW)

- SYMBOLS**
- ↑ ARROW BOARD
 - DRUM WITH STEADY BURNING LIGHT
 - SIGN ON PORTABLE OR PERMANENT SUPPORT
 - ▨ WORK AREA
 - ⊕ BARRICADE OR DRUM WITH FLASHING LIGHT
 - ⊕ TYPE III BARRICADE WITH FLASHING LIGHTS
 - TUBULAR MARKER

NOTE 1. THIS SIGN SHALL BE REMOVED OR COVERED WHEN WORKERS ARE NOT PRESENT.

FILE NAME =	USER NAME = woodshankr1	DESIGNED - RW	REVISED -	STATE OF ILLINOIS DEPARTMENT OF TRANSPORTATION	TRAFFIC CONTROL AND PROTECTION, STANDARD 701611 - STAGE II CONSTRUCTION	F.A.U. R.T.E.	SECTION	COUNTY	TOTAL SHEETS	SHEET NO.
pw:\IL\084EBID\INTEG.illinois.gov\PI\DOT\Documents\DOT Offices\District 3\Projects\0366\DRAWING\66H19-01.dgn	CHECKED - EP	REVISED -	6176			(79-R-VB,F)BRR	KANKAKEE	19	9	
Default	PLOT DATE = 6/21/2017	DATE - 4/18/2017	REVISED -			CONTRACT NO. 66H19				
			SCALE:			SHEET 2 OF 2 SHEETS	STA. TO STA.	ILLINOIS FED. AID PROJECT		

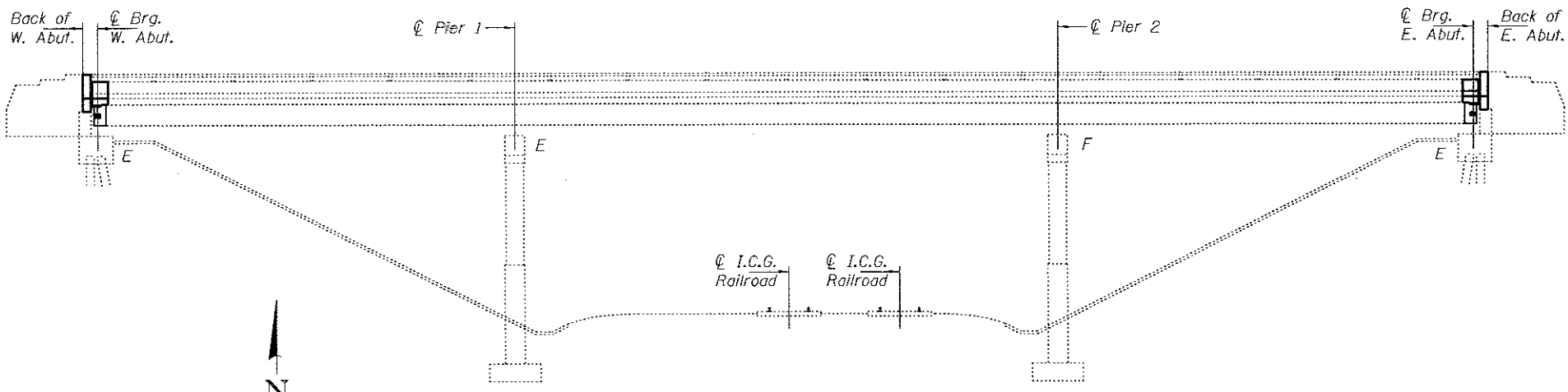


FILE NAME =	USER NAME = woodshankr1	DESIGNED - RW	REVISED -
pw:\IL\084EBIDINTEG\illinois.gov\PWIDOT\Documents\IDOT Offices\District 3\Projects\0366\DRAWING\66H19-RW\dls.dgn		CHECKED - EP	REVISED -
Default	PLOT DATE = 6/21/2017	DATE - 4/18/2017	REVISED -

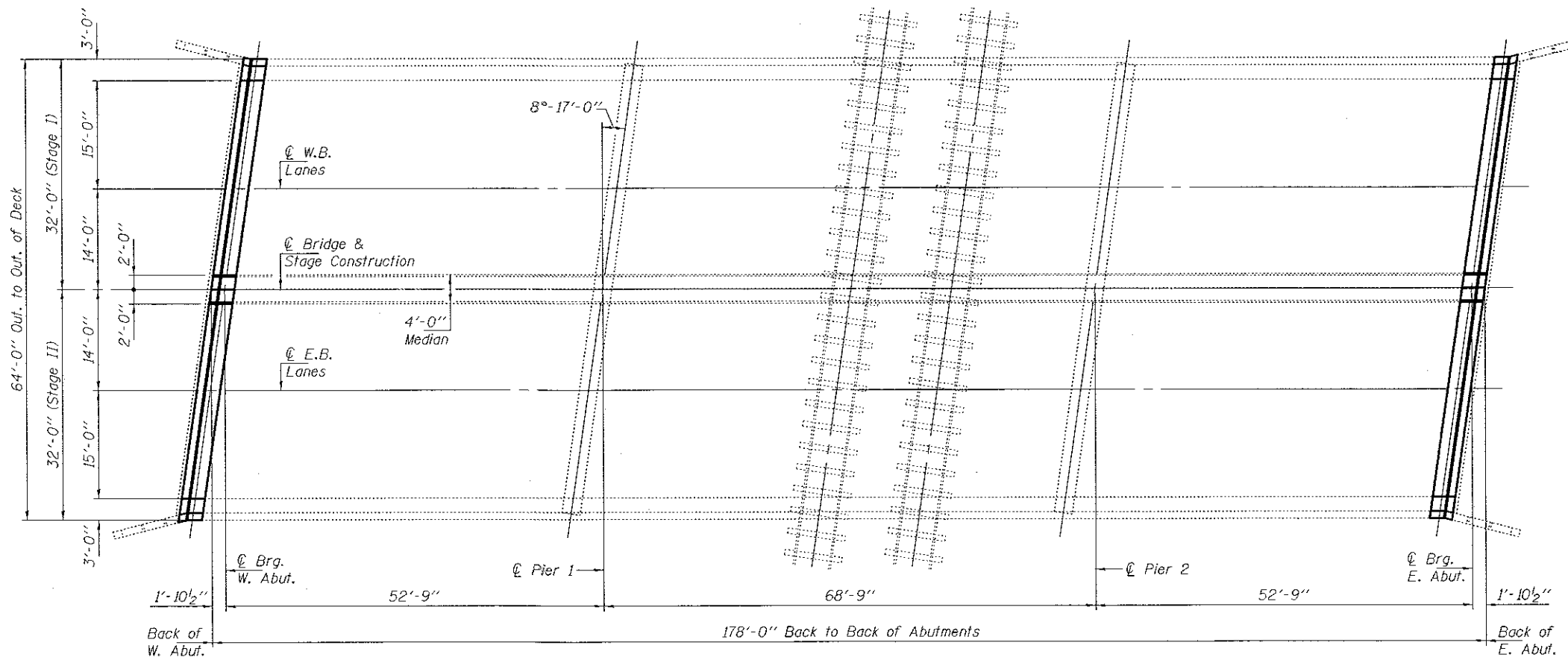
**STATE OF ILLINOIS
DEPARTMENT OF TRANSPORTATION**

PAVEMENT MARKING			
SCALE:	SHEET 1	OF 1 SHEETS	STA. TO STA.

F.A.U. RTE.	SECTION	COUNTY	TOTAL SHEETS	SHEET NO.
6176	(79-R-VB,F)BRR	KANKAKEE	19	10
			CONTRACT NO. 66H19	
ILLINOIS FED. AID PROJECT				



ELEVATION



PLAN

GENERAL NOTES

All structural steel shall conform to AASHTO Classification M-270 Gr. 36, unless otherwise noted.

Plan dimensions and details relative to existing plans are subject to nominal construction variations. The Contractor shall field verify existing dimensions and details affecting new construction and make necessary approved adjustments prior to construction or ordering of materials. Such variations shall not be cause for additional compensation for a change in scope of the work, however, the Contractor will be paid for the quantity actually furnished at the unit price bid for the work.

Reinforcement bars designated (E) shall be epoxy coated.

Prior to pouring the new concrete deck, all heavy or loose rust, loose mill scale, and other loose or potentially detrimental foreign material shall be removed from the surfaces in contact with concrete. Tightly adhered paint may remain unless otherwise noted. Removal shall be accomplished by methods that will not damage the steel and the cost will be included in the pay item covering removal of the existing concrete.

Cost of removal and re-installation of all members necessary to complete the work as detailed on the plans and as specified in the Special Provisions shall be included with Furnishing and Erecting Structural Steel.

Existing structural steel that will be in contact with new structural steel shall be cleaned and painted prior to erection as required by the GBSP "Cleaning and Painting Contact Surface Areas of Existing Steel Structures".

The existing structural steel coating contains lead. The Contractor shall take appropriate precautions to deal with the presence of lead on this project.

Existing reinforcement bars extending into the removal area shall be cleaned, straightened and incorporated into the new construction. Any reinforcement bars that are damaged during concrete removal shall be replaced with an approved bar splicer or anchorage system. Cost included with Concrete Removal.

Fasteners shall be high strength bolts. Bolts $\frac{3}{4}$ " ϕ , open holes $\frac{13}{16}$ " ϕ , unless otherwise noted.

Diaphragm connection holes shall be $\frac{15}{16}$ " ϕ for $\frac{3}{4}$ " ϕ bolts. Two hardened washers shall be required at diaphragm connections.

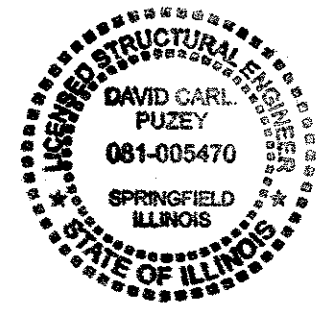
Joint openings shall be adjusted according to Article 520.04 of the Std. Specs. when the deck is poured at an ambient temperature other than 50° F.

All structural steel shall be shop painted with the inorganic zinc rich primer per AASHTO M300, Type 1. Cost included with Structural Steel Repair or Furnishing & Erecting Structural Steel.

The deck surface shall have its final finish tined according to Article 420.09(e)(1) of the Standard Specifications. Cost included with Concrete Superstructure.

TOTAL BILL OF MATERIAL

ITEM	UNIT	QUANTITY
Concrete Removal	Cu. Yd.	17.8
Concrete Superstructure	Cu. Yd.	17.8
Structural Steel Removal	Pound	870
Structural Steel Repair	Pound	730
Furnishing & Erecting Structural Steel	Pound	910
Reinforcement Bars, Epoxy Coated	Pound	2800
Bar Splicers	Each	12
Preformed Joint Strip Seal	Foot	132
Silicone Joint Sealer	Foot	4



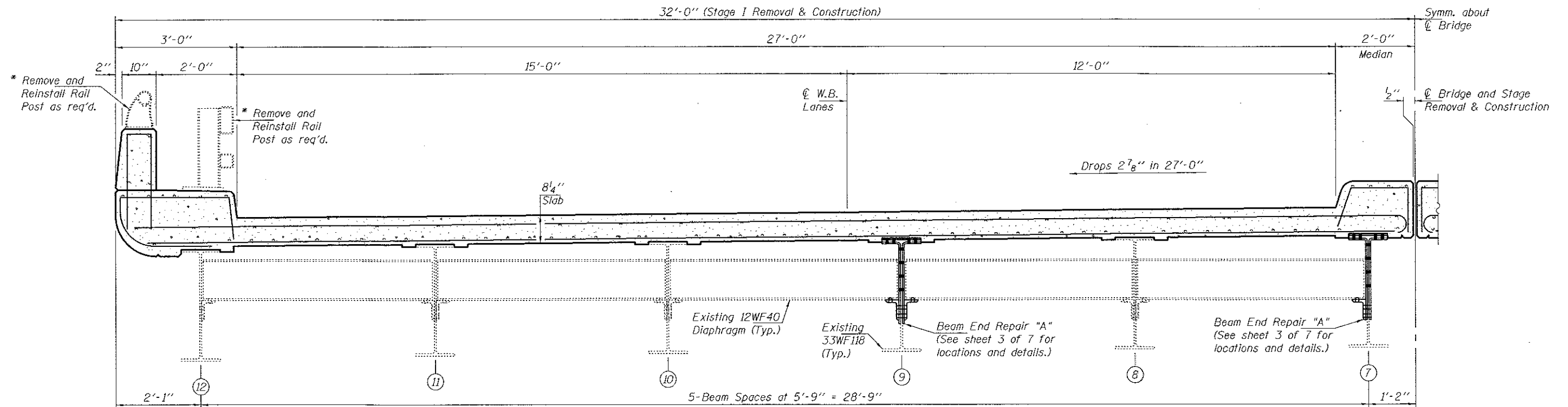
Expires: November 30, 2018

DESIGNED <i>Stephen Ryan</i>	DATE AUGUST 2, 2017
CHECKED <i>[Signature]</i>	REVISOR
DRAWN <i>Stephen</i>	REVISOR
CHECKED <i>SMR</i>	

STATE OF ILLINOIS
DEPARTMENT OF TRANSPORTATION

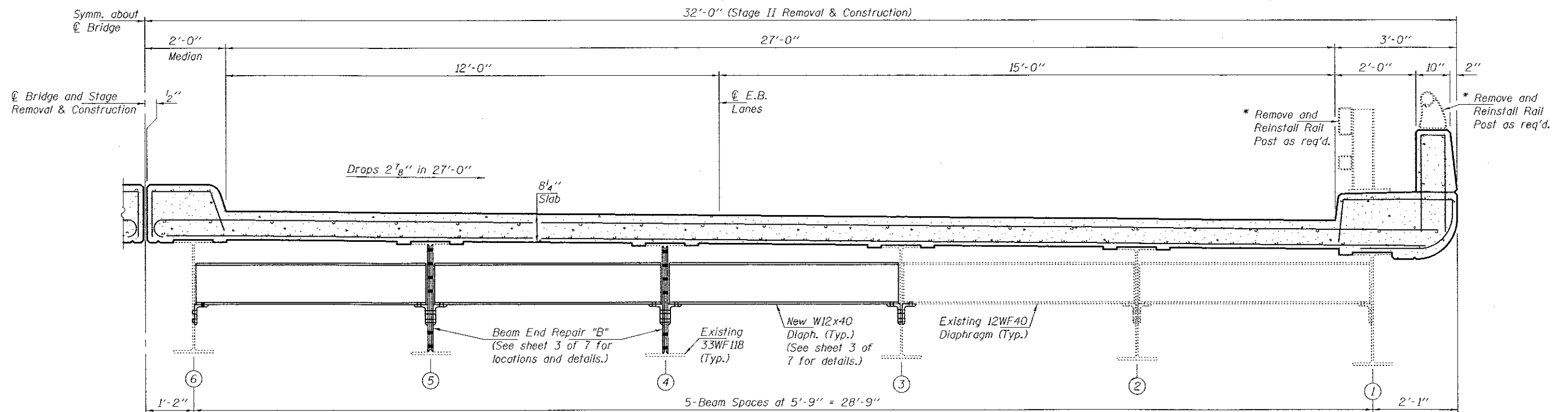
PLAN AND ELEVATION
FAU 6176 (ARMOUR ROAD) OVER ICG RR
SN 046-0063
SHEET NO. 1 OF 7 SHEETS

F.A.U. RTE. 6176	SECTION 179-R-VB/FBRR	COUNTY KANKAKEE	TOTAL SHEETS 19	SHEET NO. 11
			CONTRACT NO. 66H19	
ILLINOIS FED. AID PROJECT				



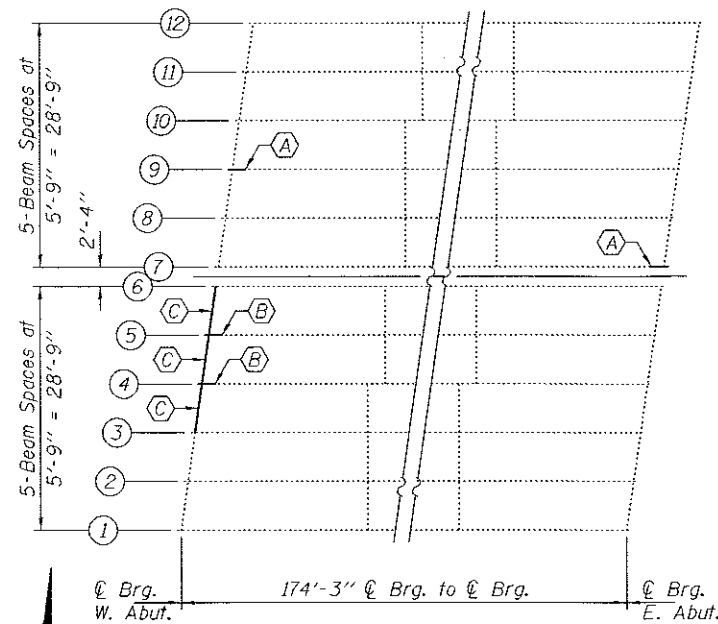
CROSS SECTION - STAGE I
(Looking East)

* For Rail Post attachment details see sheet 4 of 7. Cost included with Concrete Removal.



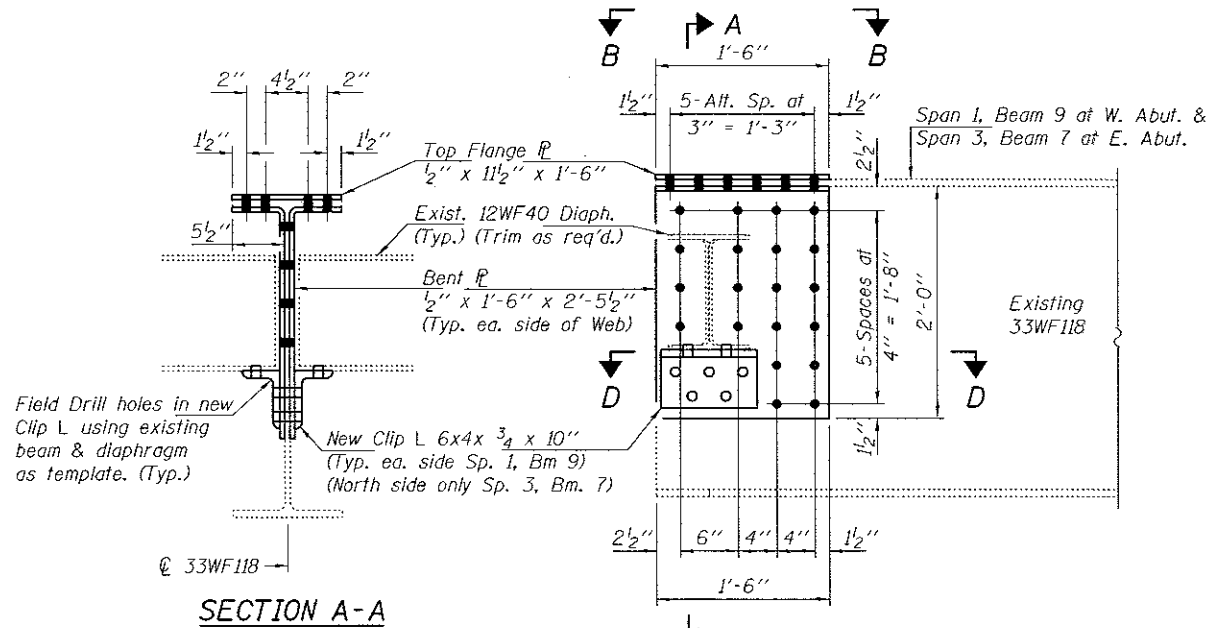
CROSS SECTION - STAGE II
(Looking East)

DESIGNED SMR	DATE AUGUST 2, 2017	STATE OF ILLINOIS DEPARTMENT OF TRANSPORTATION	CROSS SECTION AND STAGING DETAILS		F.A.U. RTE.	SECTION	COUNTY	TOTAL SHEETS	SHEET NO.
CHECKED JGY	REVISOR		SN 046-0063		6176	(79-R-VB)FIBRR	KANKAKEE	19	12
DRAWN Steffen	REVISOR		SHEET NO. 2 OF 7 SHEETS		CONTRACT NO. 66H19				
CHECKED SMR JGY	ENGINEER OF BRIDGES AND STRUCTURES <i>Carl Perry</i>				ILLINOIS FED. AID PROJECT				



PARTIAL FRAMING PLAN

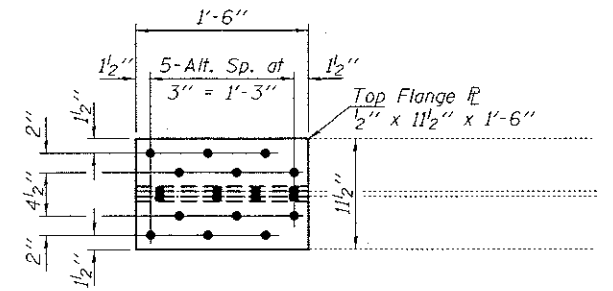
- (A) - Strengthen Beam End (See Repair Detail A)
- (B) - Strengthen Beam End (See Repair Detail B)
- (C) - Remove & Replace Diaphragm & Clip L's.



SECTION A-A

REPAIR DETAIL "A"

Span 1, Beam 9 shown; Span 3, Beam 7 similar except diaphragm and Clip L on North side only of Beam 7. Cost included with Structural Steel Repair.

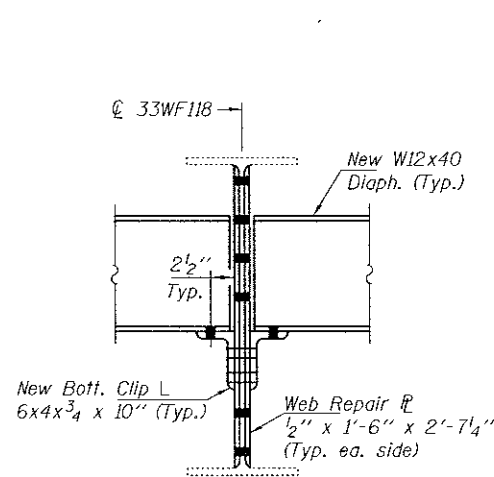


VIEW B-B

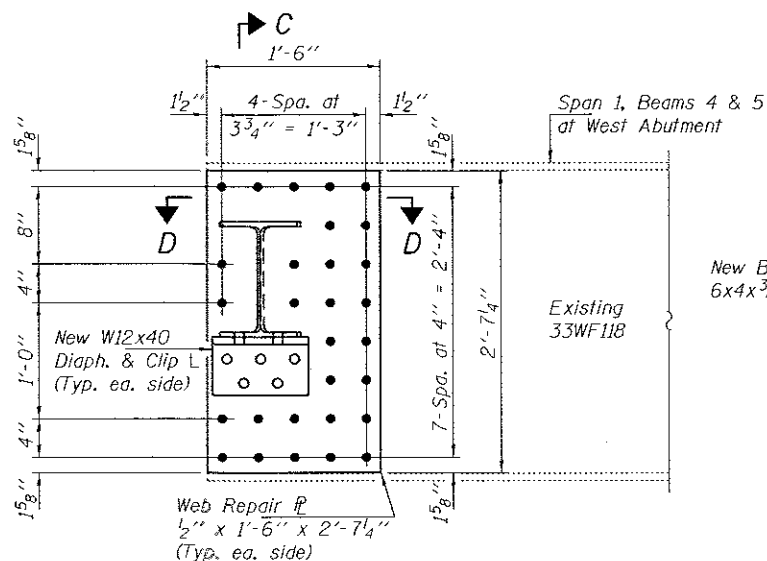
Diaphragms & Clip L's not shown for clarity. (See Section D-D for Diaphragm & Clip L Details)

BOLT HOLE LEGEND

- Field drill using existing holes as template.
- Shop drill holes in new steel.

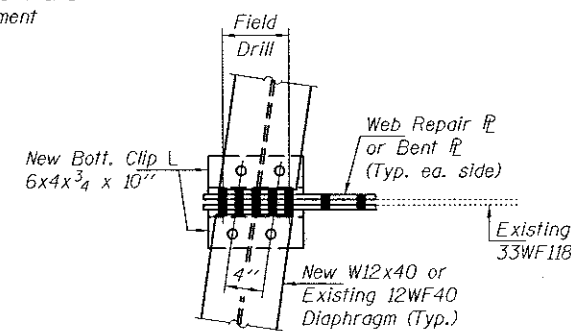


SECTION C-C

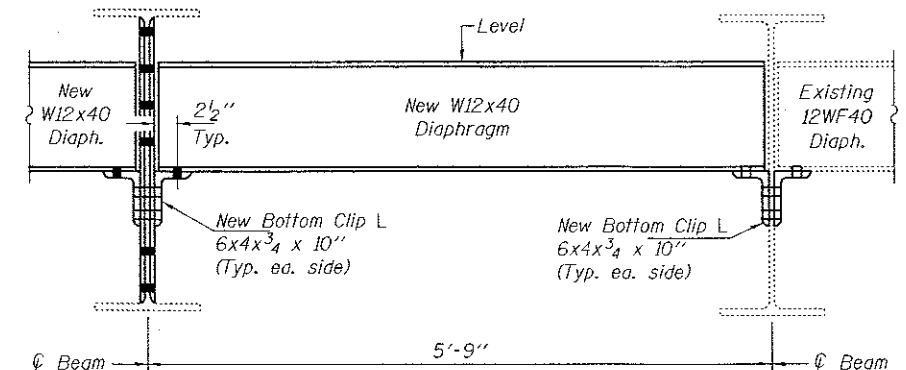


REPAIR DETAIL "B"

Cost included with Structural Steel Repair.



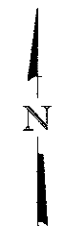
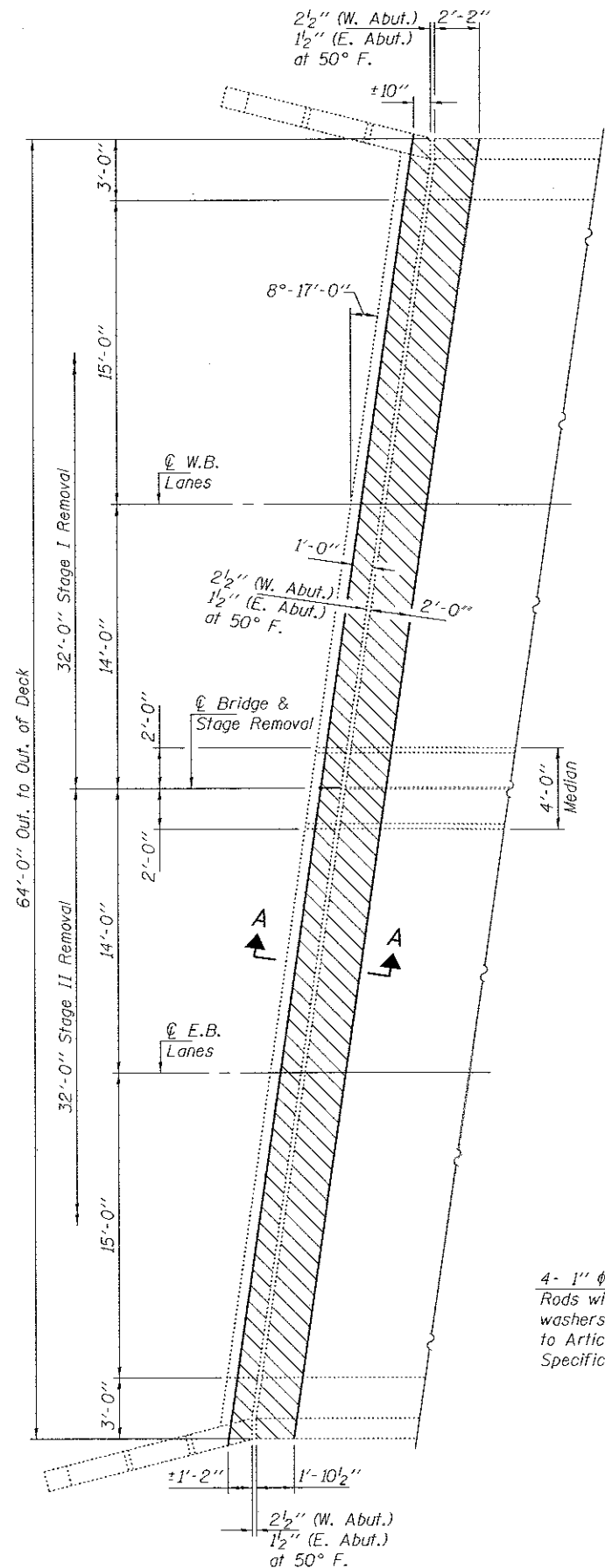
SECTION D-D



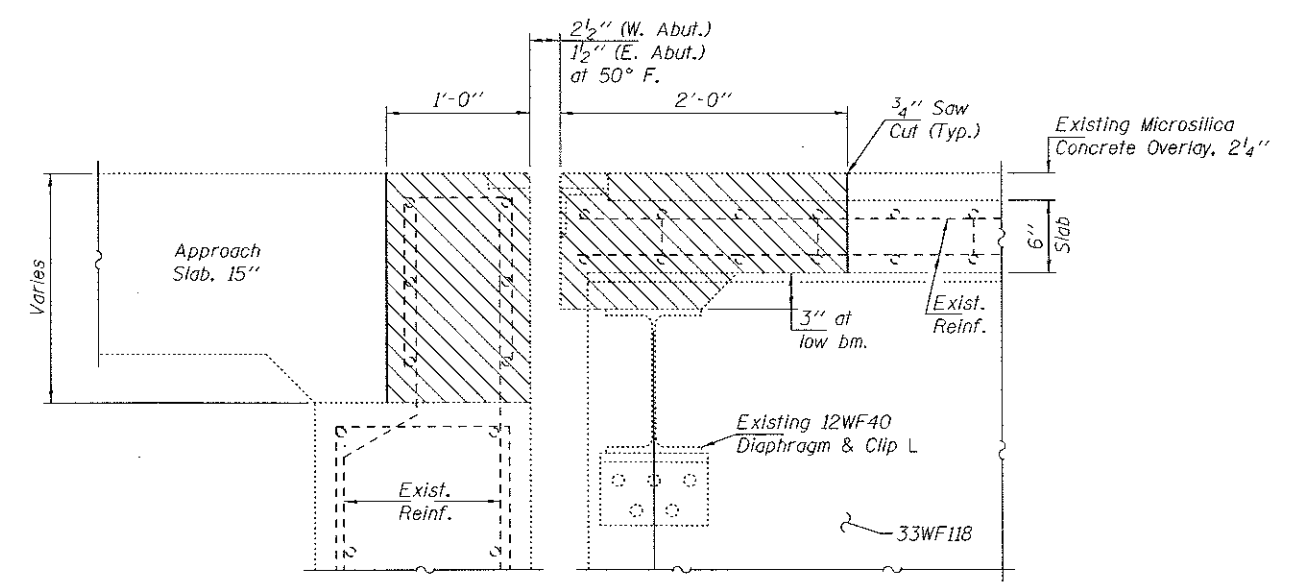
DIAPHRAGM REPLACEMENT DETAILS

Notes:
 Natural camber of new beam shall be placed upward for fabrication.
 Field drill holes in Clip L's using existing holes in beam as template.
 Cost of Diaphragm, Clip L's, and Diaphragm Connection Bolts included with Furnishing & Erecting Structural Steel.

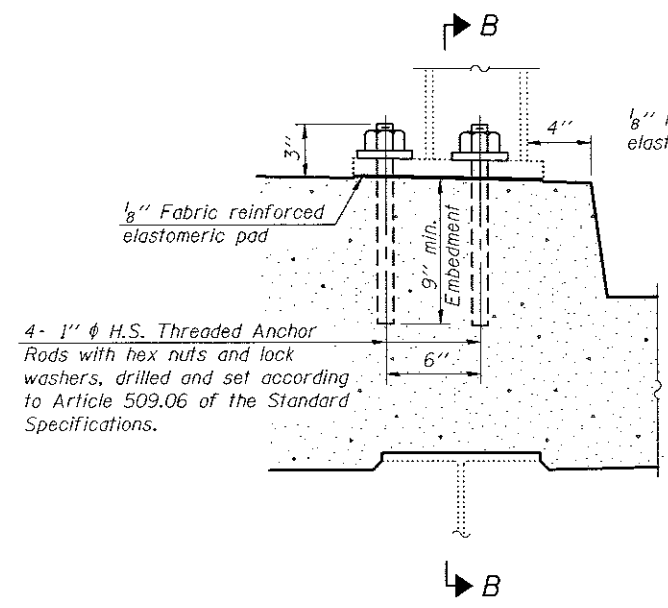
DESIGNED SMR	DATE AUGUST 2, 2017	STATE OF ILLINOIS DEPARTMENT OF TRANSPORTATION	BEAM END REPAIR AND DIAPHRAGM REPLACEMENT DETAILS SN 046-0063	F.A.U. RTE. 6176	SECTION 179-R-VB,F,BRR	COUNTY KANKAKEE	TOTAL SHEETS 19	SHEET NO. 13
CHECKED JGY	REVISIONS			SHEET NO. 3 OF 7 SHEETS		CONTRACT NO. 66H19		
DRAWN Steffen	ENGINEER OF BRIDGES AND STRUCTURES			ILLINOIS FED. AID PROJECT				
CHECKED SMR JGY	PASSED							



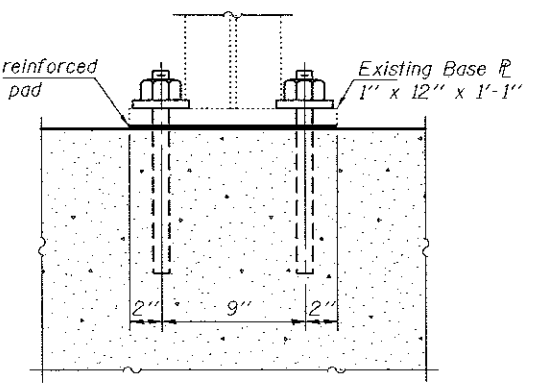
Notes:
Hatched areas indicate concrete removal.
For Approach Curb & Parapet details and Bill of Material see sheet 5 of 7.



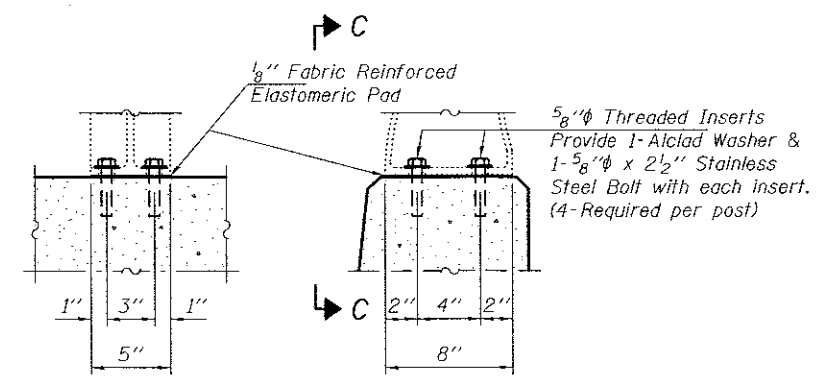
SECTION A-A
Dims. at Rt. L's



CURB RAIL POST ATTACHMENT DETAILS



SECTION B-B



VIEW C-C

PARAPET RAIL POST ATTACHMENT DETAILS

DESIGNED SMR
CHECKED JGY
DRAWN Steffen
CHECKED SMR JGY

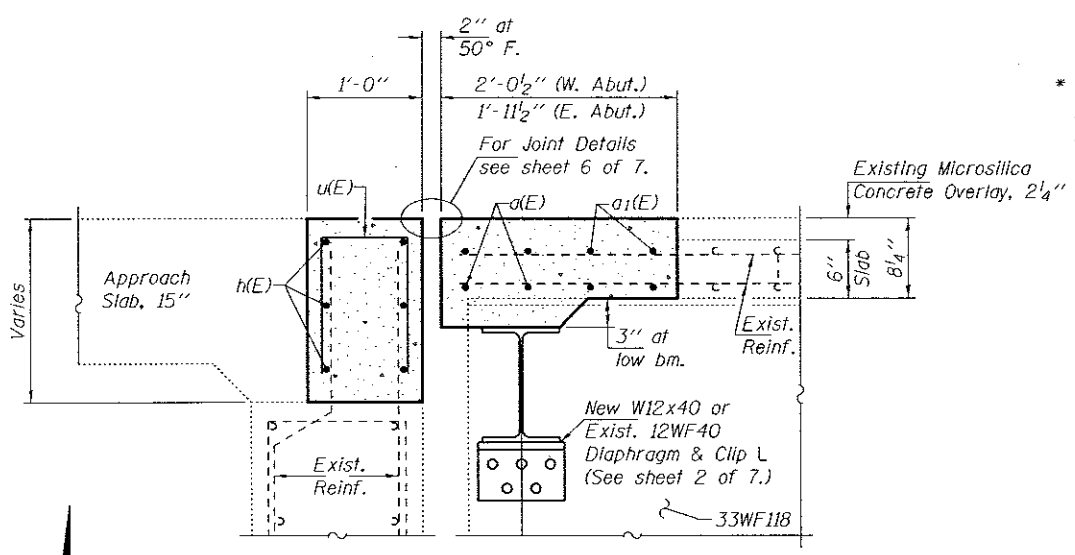
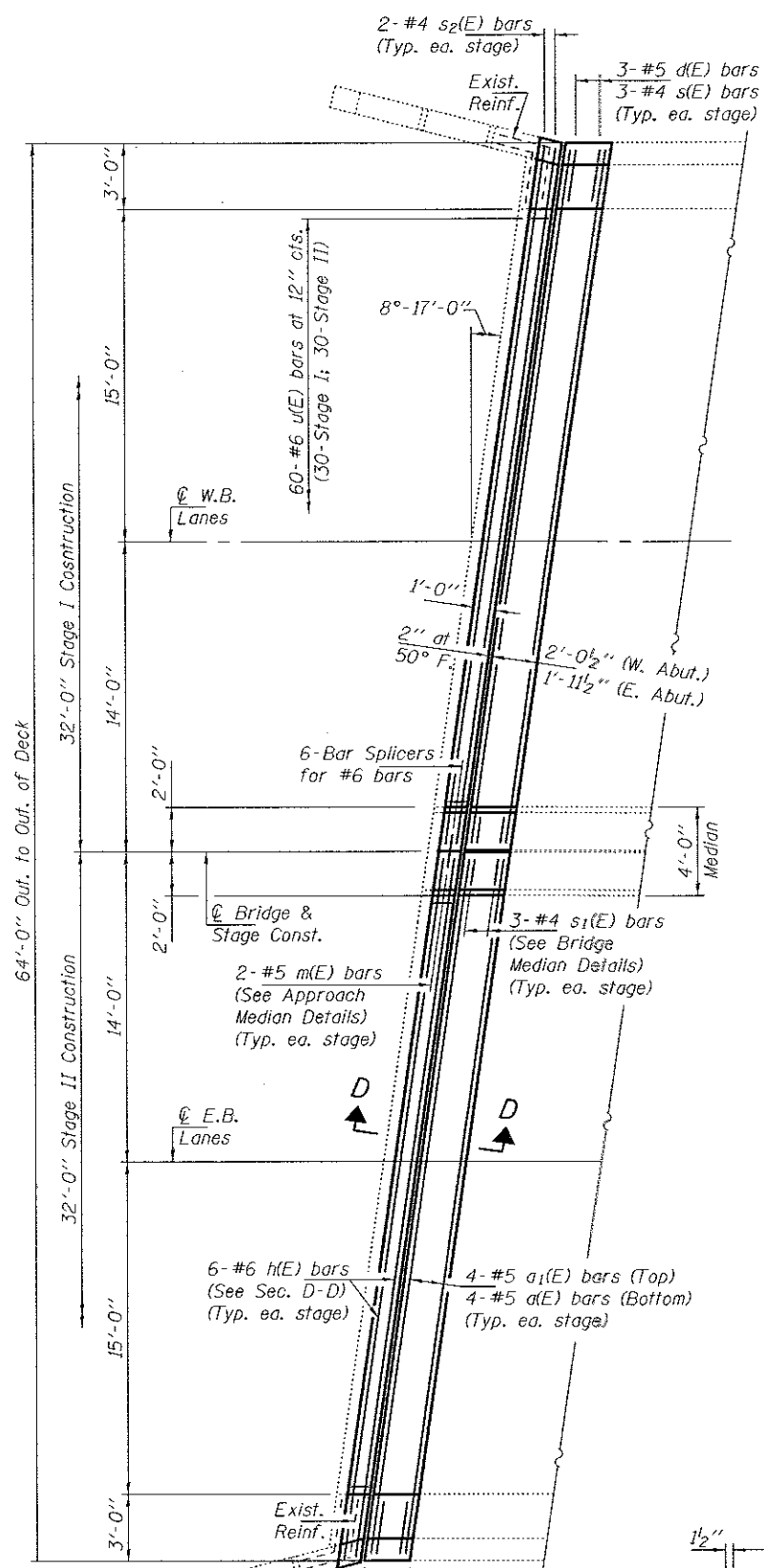
PASSED	<i>A. Carl Perry</i> ENGINEER OF BRIDGES AND STRUCTURES
--------	--

DATE	AUGUST 2, 2017
REVISED	
REVISED	

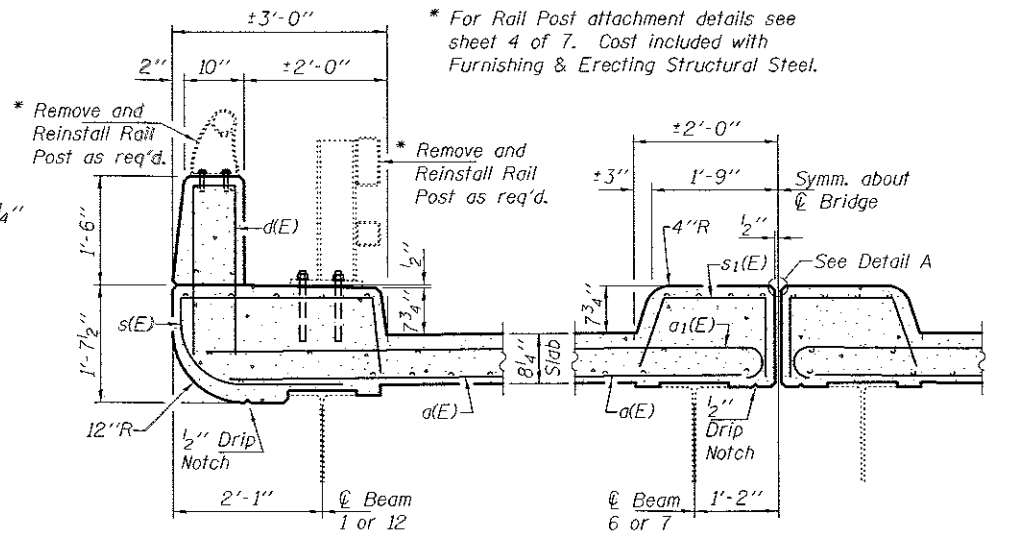
STATE OF ILLINOIS
DEPARTMENT OF TRANSPORTATION

JOINT REMOVAL & RAIL POST ATTACHMENT DETAILS
SN 046-0063
SHEET NO. 4 OF 7 SHEETS

F.A.U. RTE.	SECTION	COUNTY	TOTAL SHEETS	SHEET NO.
6176	(79-R-VB,F)BR	KANKAKEE	19	14
CONTRACT NO. 66H19			ILLINOIS FED. AID PROJECT	

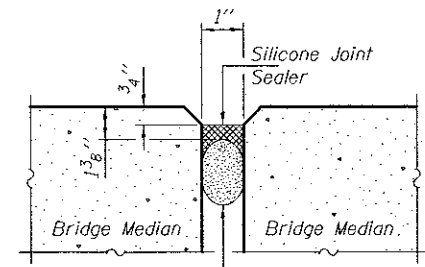


SECTION D-D
Dims. at Rt. L's



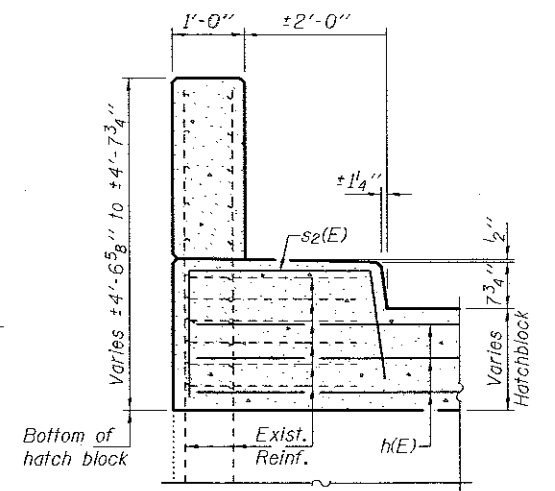
BRIDGE PARAPET DETAILS

BRIDGE MEDIAN DETAILS

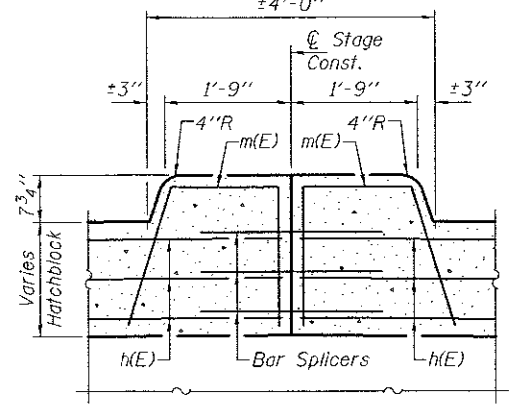


Backer Rod having a diameter 25% greater than the joint opening at the time of installation.

DETAIL A



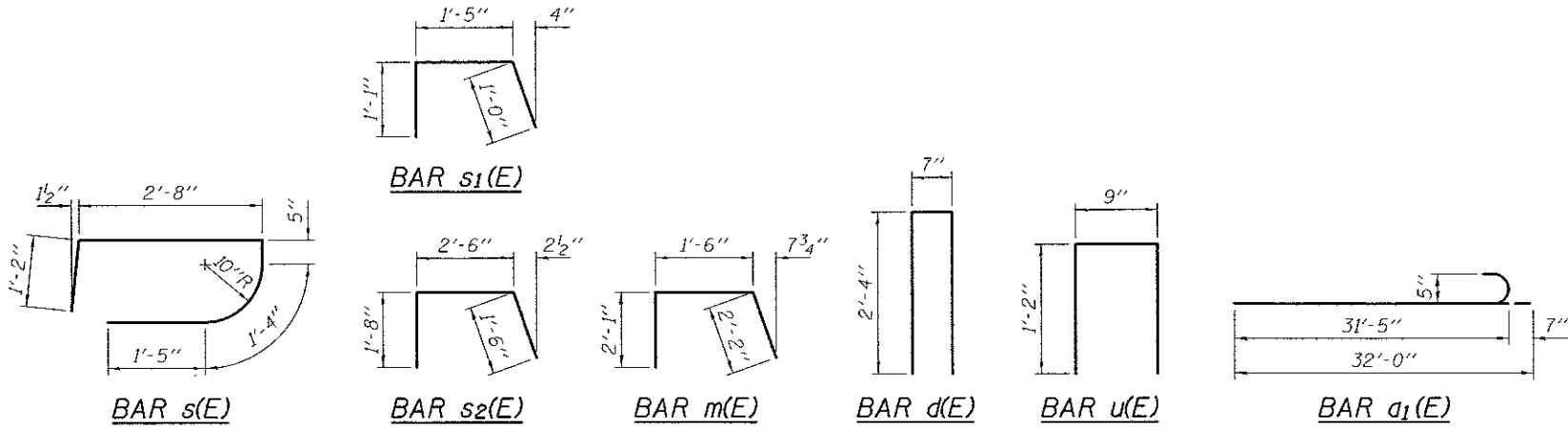
APPROACH CURB & PARAPET DETAILS



APPROACH MEDIAN DETAILS

BILL OF MATERIAL

Bar	No.	Size	Length	Shape
d(E)	16	#5	31'-0"	—
a1(E)	16	#5	32'-0"	—
d(E)	12	#5	5'-3"	⊏
h(E)	24	#6	31'-5"	—
m(E)	8	#5	5'-9"	⊏
s(E)	12	#4	7'-0"	⊏
s1(E)	12	#4	3'-6"	⊏
s2(E)	8	#4	5'-8"	⊏
u(E)	120	#5	3'-1"	⊏
Concrete Removal		Cu. Yd.	17.8	
Concrete Superstructure		Cu. Yd.	17.8	
Bar Splicers		Each	12	
Reinforcement Bars, Epoxy Coated		Pound	2800	



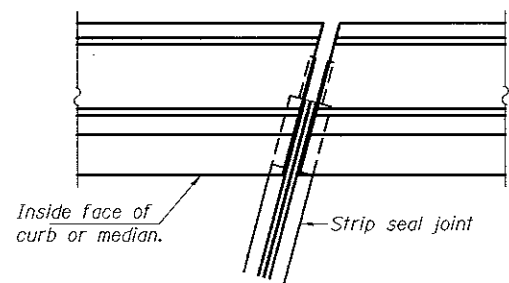
DESIGNED SMR
CHECKED JGY
DRAWN Steffen
CHECKED SMR JGY

DATE AUGUST 2, 2017
PASSED
ENGINEER OF BRIDGES AND STRUCTURES

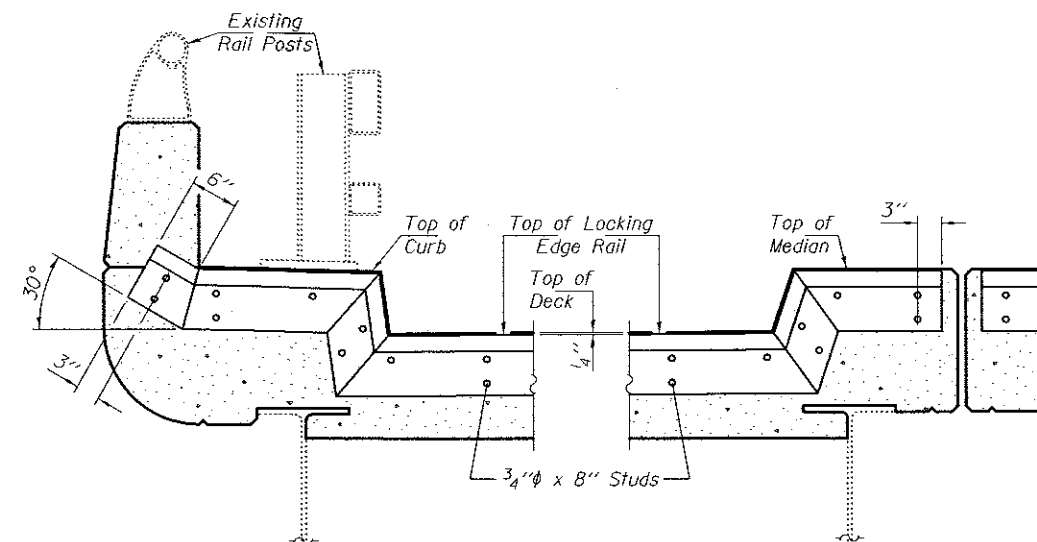
STATE OF ILLINOIS
DEPARTMENT OF TRANSPORTATION

JOINT REPLACEMENT DETAILS
SN 046-0063
SHEET NO. 5 OF 7 SHEETS

F.A.U. RT. 6176
SECTION (79-R-VB,F)RRR
COUNTY KANKAKEE
TOTAL SHEETS 19
SHEET NO. 15
CONTRACT NO. 66H19
[ILLINOIS] FED. AID PROJECT



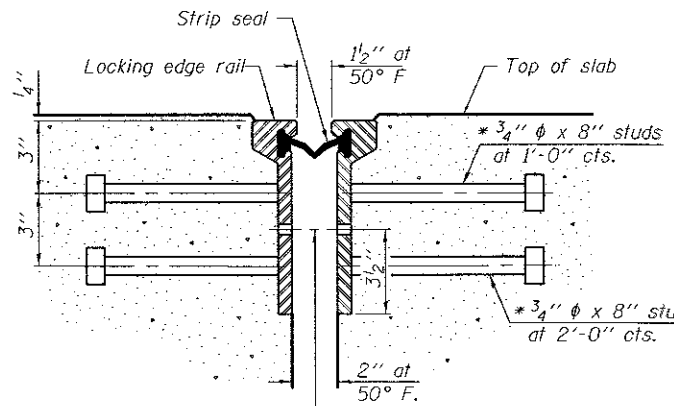
PLAN
(See Typical End Treatment at Curb & Median Detail.)



TYPICAL END TREATMENT AT CURB & MEDIAN

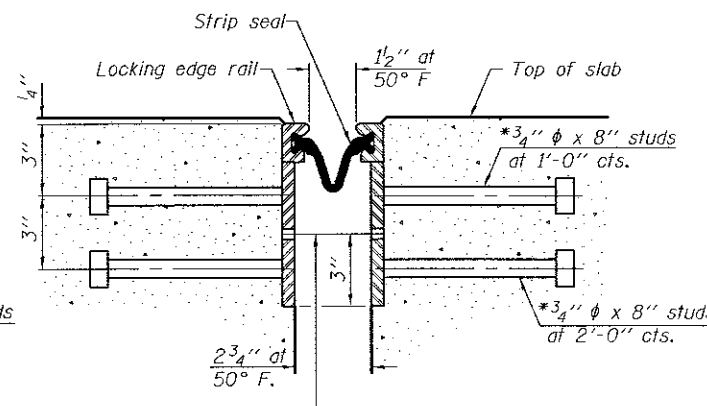
Shorter plates with a single row of studs at 12" cts. may be necessary on medians which are shallower than 9". See manufacturer's recommendation.

Notes:
The strip seal shall be made continuous and shall have a minimum thickness of 1/4". The configuration of the strip seal shall match the configuration of the Locking Edge Rails. Open or "webbed" strip seal gland configurations are not permitted. The gland shall be sized for a maximum rated movement of 4 inches.
The Locking Edge Rails depicted are conceptual only, except for the minimum dimensions shown. The actual configuration of the Locking Edge Rails and matching strip seal may vary from manufacturer to manufacturer. Flanged edge rails will not be allowed. Locking Edge Rails may be spliced at slope discontinuities.
The manufacturer's recommended installation methods shall be followed.
The joint opening and deck dimensions detailed on the superstructure are based on a rolled rail expansion joint. If the Contractor elects to use the welded rail expansion joint, the opening and deck dimensions shall be modified according to the dimensions detailed on this sheet. Required modifications shall be made at no additional cost to the State.
All steel components shall be galvanized after fabrication according to Article 520.03 of the Standard Specifications. Maximum space between rail segments shall be 3/16", sealed with a suitable sealant. Joints in rails within 10 ft. of curbs shall be welded.
Parapet plates and anchorage studs for skews > 30° included in the cost of Preformed Joint Strip Seal.



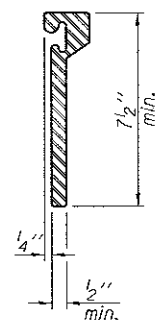
SECTION THRU ROLLED RAIL JOINT

7/16" ϕ holes at 4'-0" cts. for 3/8" ϕ bolts. All bolts shall be burned, sawed, or chipped off flush with the plates after forms are removed, typ.

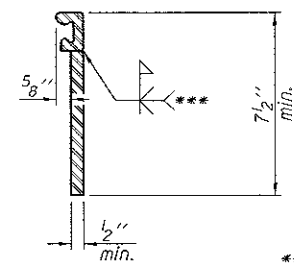


SECTION THRU WELDED RAIL JOINT

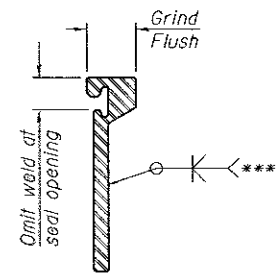
* Granular or solid flux filled headed studs conforming to Article 1006.32 of the Std. Specs., automatically end welded.



ROLLED EXTRUDED RAIL



WELDED RAIL



*** Back gouge not required if complete joint penetration is verified by mock-up.

LOCKING EDGE RAIL SPLICE

The inside of the locking edge rail groove shall be free of weld residus.
Rolled rail shown, welded rail similar.

LOCKING EDGE RAILS

BILL OF MATERIAL

Item	Unit	Total
Preformed Joint Strip Seal	Foot	132

DESIGNED SMR
CHECKED JGY
DRAWN Steffen
CHECKED SMR JGY

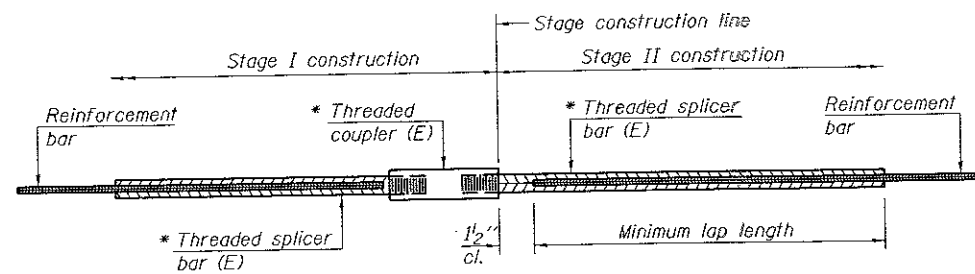
PASSED
Carl Perry
ENGINEER OF BRIDGES AND STRUCTURES

DATE AUGUST 2, 2017
REVISED
REVISED

STATE OF ILLINOIS
DEPARTMENT OF TRANSPORTATION

PREFORMED JOINT STRIP SEAL DETAILS
SN 046-0063
SHEET NO. 6 OF 7 SHEETS

F.A.U. RTE.	SECTION	COUNTY	TOTAL SHEETS	SHEET NO.
6176	(79-R-VB,F)BR	KANKAKEE	19	16
				CONTRACT NO. 66H19
ILLINOIS FED. AID PROJECT				

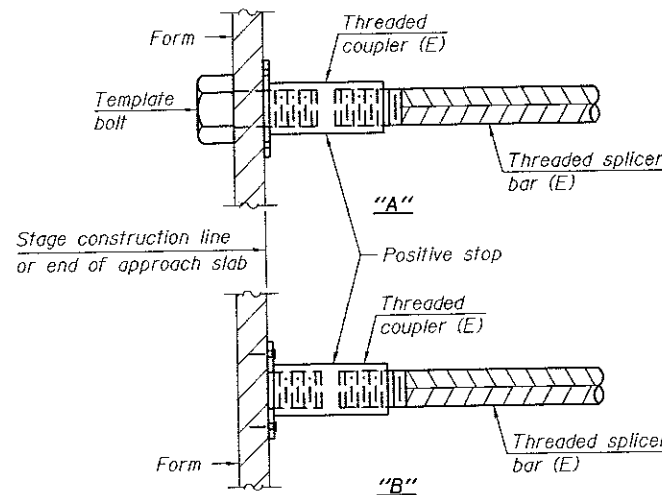


STANDARD BAR SPLICER ASSEMBLY

Threaded splicer bar length = min. lap length + 1 1/2" + thread length

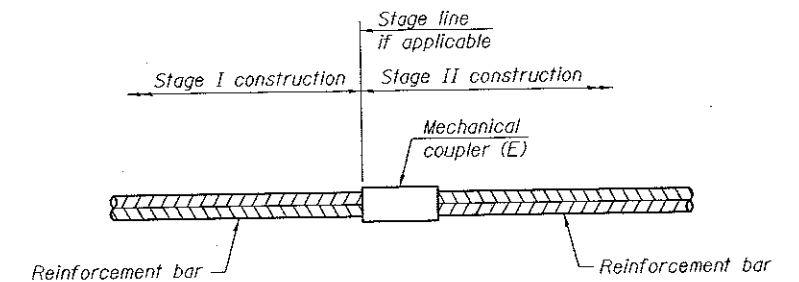
* Epoxy not required on Bar Splicer Assembly components used in conjunction with black bars.

Location	Bar size	No. assemblies required	Minimum lap length
West Hatchblock	#6	6	4'-0"
East Hatchblock	#6	6	4'-0"



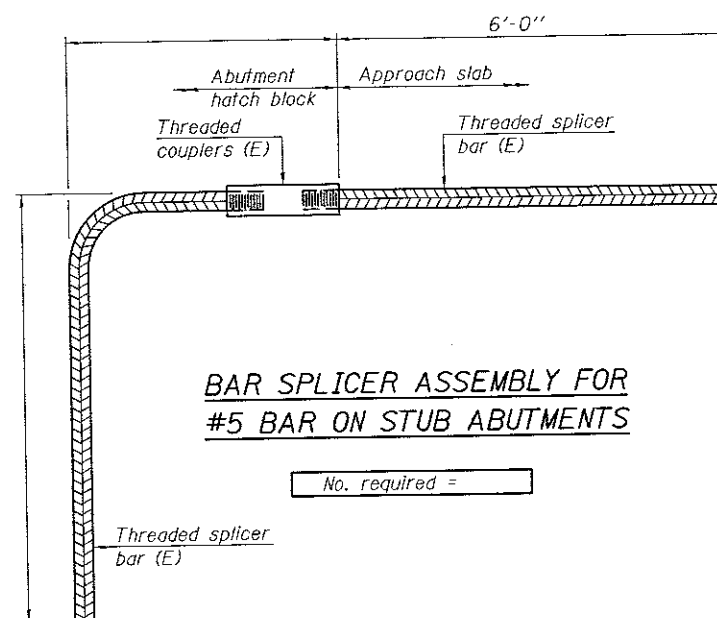
INSTALLATION AND SETTING METHODS

"A" : Set bar splicer assembly by means of a template bolt.
 "B" : Set bar splicer assembly by nailing to wood forms or cementing to steel forms.
 (E) : Indicates epoxy coating.



STANDARD MECHANICAL SPLICER

Location	Bar size	No. assemblies required



BAR SPLICER ASSEMBLY FOR #5 BAR ON STUB ABUTMENTS

No. required =

NOTES

Splicer bars shall be deformed with Threaded ends and have a minimum 60 ksi yield strength.
 All reinforcement shall be lapped and tied to the splicer bars.
 Bar splicer assemblies shall be epoxy coated according to the requirements for reinforcement bars. See Section 508 of the Standard Specifications.
 See approved list of bar splicer assemblies and mechanical splicers for alternatives.

DESIGNED SMR	DATE AUGUST 2, 2017
CHECKED JGY	REVISOR
DRAWN Steffen	REVISOR
CHECKED SMR JGY	REVISOR

PASSED *Carl Prosser*
 ENGINEER OF BRIDGES AND STRUCTURES

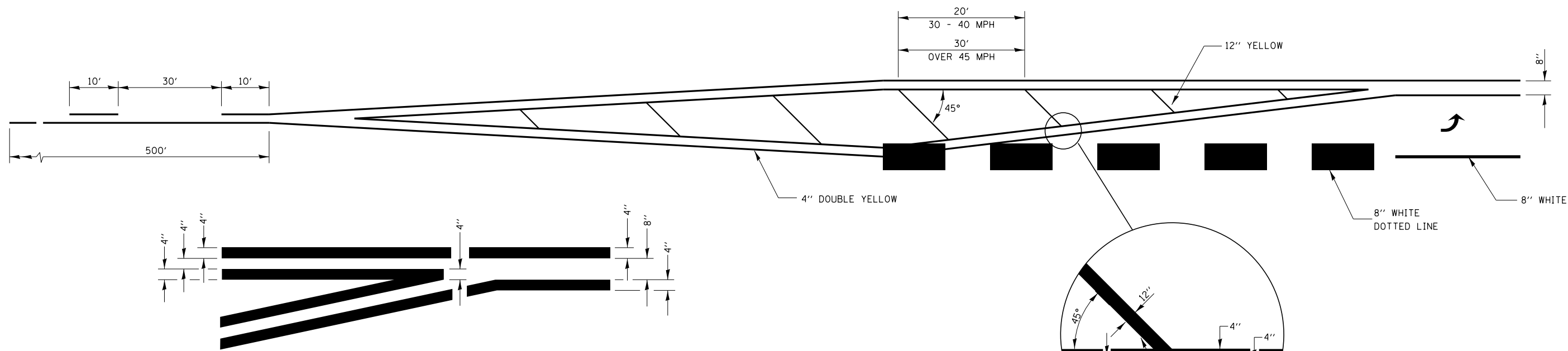
STATE OF ILLINOIS
 DEPARTMENT OF TRANSPORTATION

BAR SPLICER ASSEMBLY AND MECHANICAL SPLICER DETAILS
 SN 046-0063

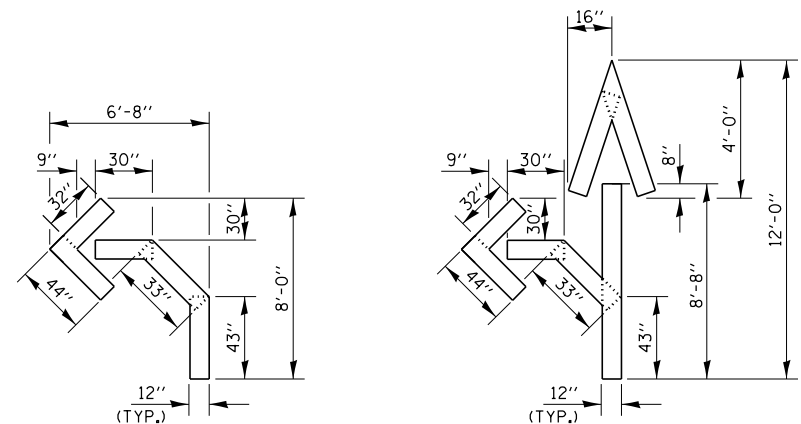
SHEET NO. 7 OF 7 SHEETS

F.A.U. RTE.	SECTION	COUNTY	TOTAL SHEETS	SHEET NO.
6176	(79-R-VB, FIBRR	KANKAKEE	19	17

CONTRACT NO. 66H19
 ILLINOIS FED. AID PROJECT

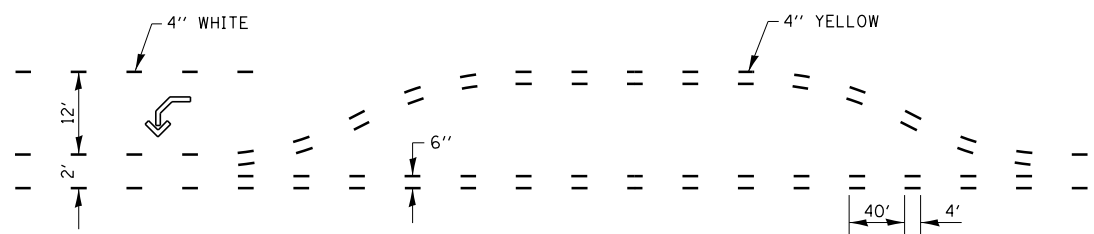


**TYPICAL APPLICATION
LEFT TURN LANES**

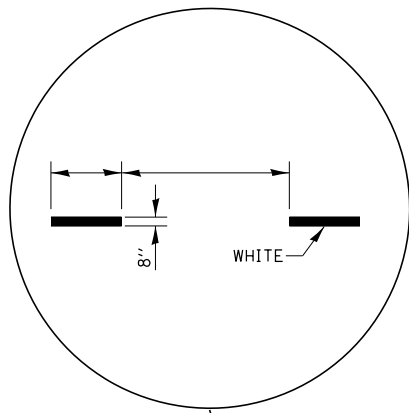


QUANTITY
12" LINE = 16 LIN FT
OR 4" LINE = 48 LIN FT

QUANTITY
12" LINE = 29 LIN FT
OR 4" LINE = 87 LIN FT

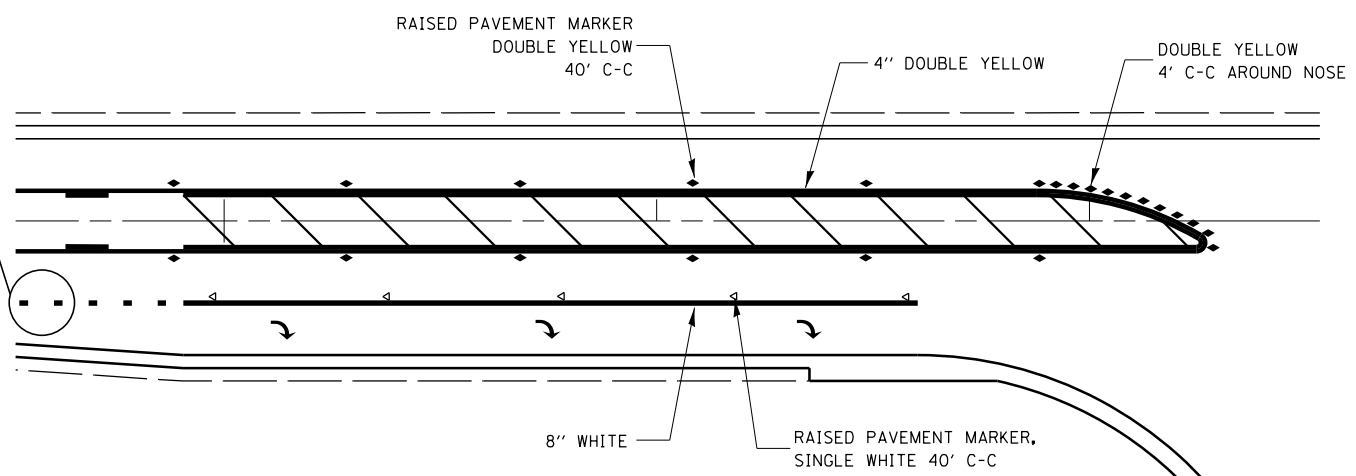


**SHORT-TERM PAVEMENT MARKING
FOR MEDIANS AND ARROWS**



**ADVANCE AND INTERSECTION LANE
DIVIDER LINES**

URBAN PAVEMENT MARKING



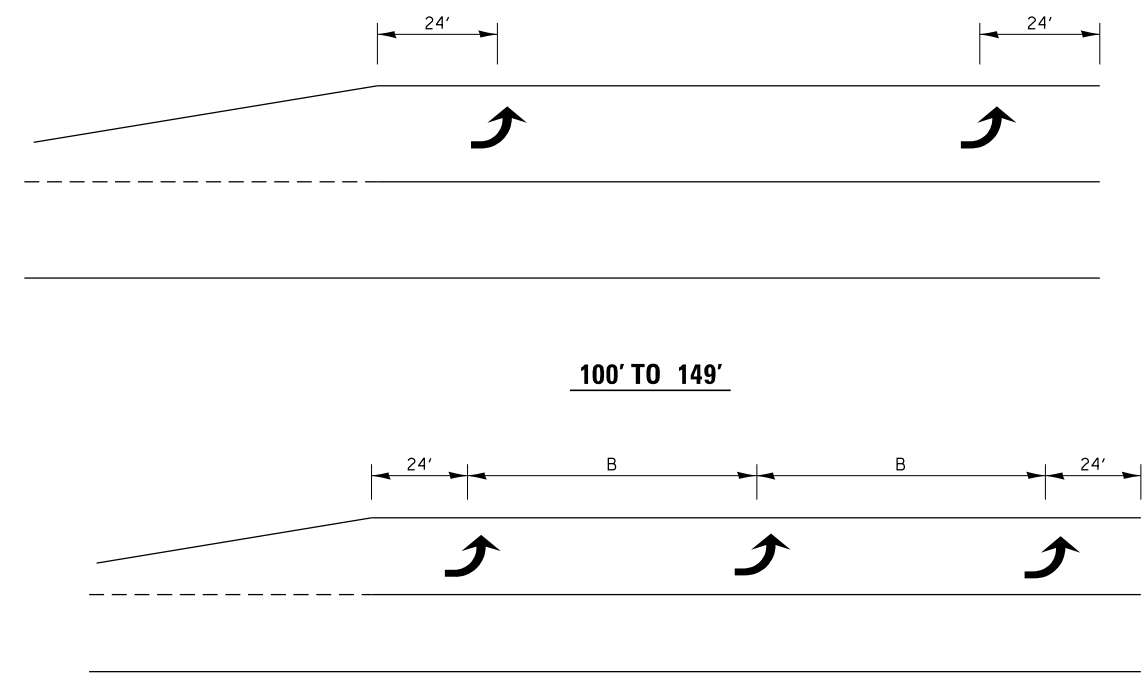
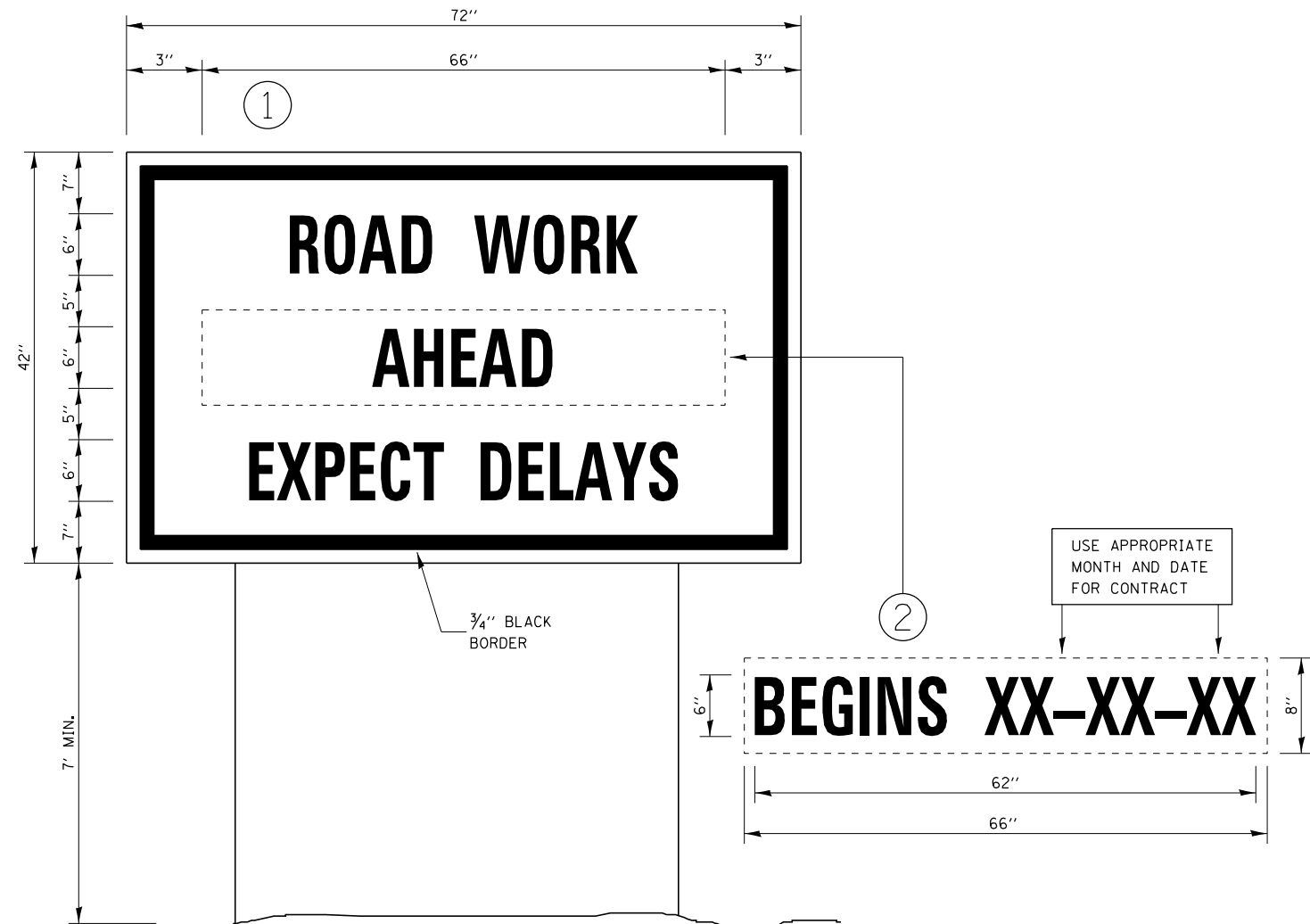
**RAISED REFLECTIVE AND PAVEMENT MARKERS
RIGHT TURN LANE**

FILE NAME =	USER NAME = woodshankr1	DESIGNED - RW	REVISED -
pw:\IL\084EBIDINTEG.illinois.gov\PIWIDOT\Documents\IDOT Offices\District 3\Projects\0366\DRAWING\66H19-RW\01.dgn		CHECKED - EP	REVISED -
Default	PLOT DATE = 6/21/2017	DATE - 4/18/2017	REVISED -

**STATE OF ILLINOIS
DEPARTMENT OF TRANSPORTATION**

DETAILS			
SCALE:	SHEET 1	OF 1 SHEETS	STA. TO STA.

F.A.U. RTE.	SECTION	COUNTY	TOTAL SHEETS	SHEET NO.
6176	(79-R-VB,F)BRR	KANKAKEE	19	18
			CONTRACT NO. 66H19	
ILLINOIS FED. AID PROJECT				



**TYPICAL PLACEMENT OF ARROWS
IN TURN LANES**

TEMPORARY INFORMATION SIGNING

NOTES:

1. USE 6" D BLACK LETTERING ON FLUORESCENT ORANGE BACKGROUND.
2. ERECT SIGNS AT LOCATIONS IN ADVANCE OF THE "ROAD CONSTRUCTION AHEAD" SIGNS AS DIRECTED BY THE ENGINEER.
3. ERECT SIGN ① WITH INSTALLED PANEL ② A MINIMUM OF ONE WEEK PRIOR TO THE START OF THE LANE CLOSURE.
4. REMOVE PANEL ② ON THAT DATE.
5. SEE SPECIAL PROVISION "TEMPORARY INFORMATION SIGNING" FOR ADDITIONAL INFORMATION.
6. WILL BE PAID FOR PER SQ FT AS "TEMPORARY INFORMATION SIGNING". EACH SIGN = 21 SQ FT AND THE DATE PANEL ② WILL NOT BE MEASURED SEPARATELY FOR PAYMENT.

FILE NAME =	USER NAME = woodshankr1	DESIGNED - RW	REVISED -	STATE OF ILLINOIS DEPARTMENT OF TRANSPORTATION	DETAILS	F.A.U. RTE.	SECTION	COUNTY	TOTAL SHEETS	SHEET NO.	
pw:\IL\084EBIDINTEG\illinois.gov\PWIDOT\Documents\IDOT Offices\District 3\Projects\0366\Drawings\66H19-RW\ails.dgn	PLotted SCALE = 100.0000' / in.	CHECKED - EP	REVISED -			6176	(79-R-VB,F)BRR	KANKAKEE	19	19	
Default	PLOT DATE = 6/21/2017	DATE - 4/18/2017	REVISED -			CONTRACT NO. 66H19		ILLINOIS FED. AID PROJECT			
SCALE:		SHEET 1 OF 1 SHEETS				STA.	TO STA.				