

STATE OF ILLINOIS  
DEPARTMENT OF TRANSPORTATION

F.A.S. RTE.	SECTION	COUNTY	TOTAL SHEETS	SHEET NO.
961	6R(RS-2)	MASSAC	29	1
		ILLINOIS	CONTRACT NO. 78924	

FOR INDEX OF SHEETS, SEE SHEET NO. 3

**PROPOSED  
HIGHWAY PLANS**

F.A.S. 961 (U.S. 45)  
SECTION 6R(RS-2)  
PROJECT STP-BBWC(159)  
RESURFACING  
MASSAC COUNTY  
C-99-030-22

**TRAFFIC DATA**

2021 ADT 6,150 WITH 3% TRUCKS  
2022 ADT 6,210 WITH 3% TRUCKS

**TOWNSHIPS**

WEST BROOKLYN  
EAST BROOKLYN

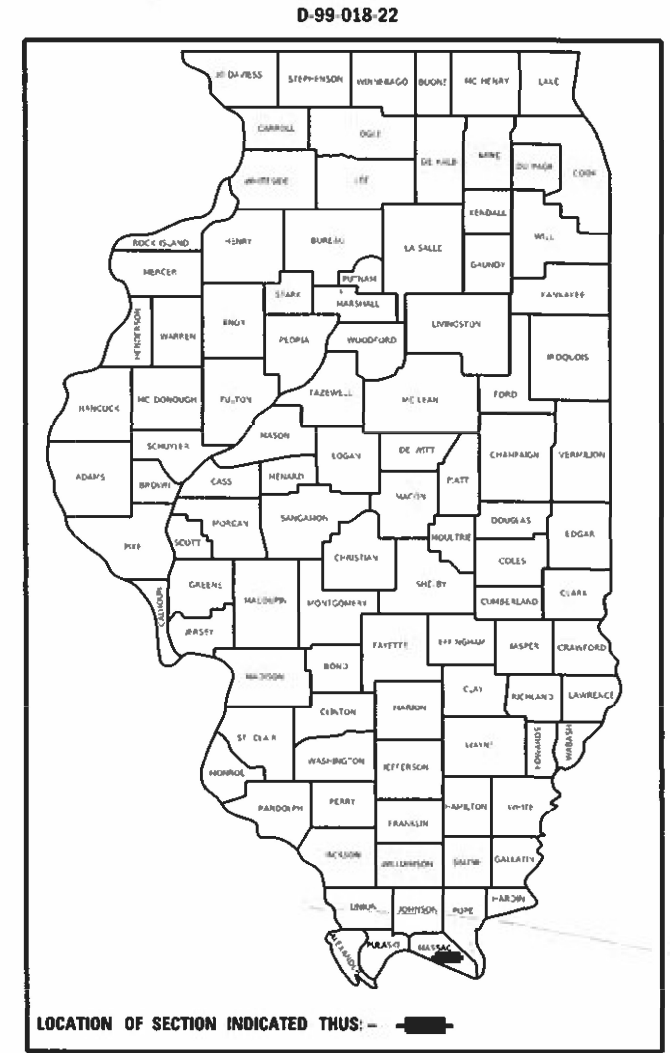
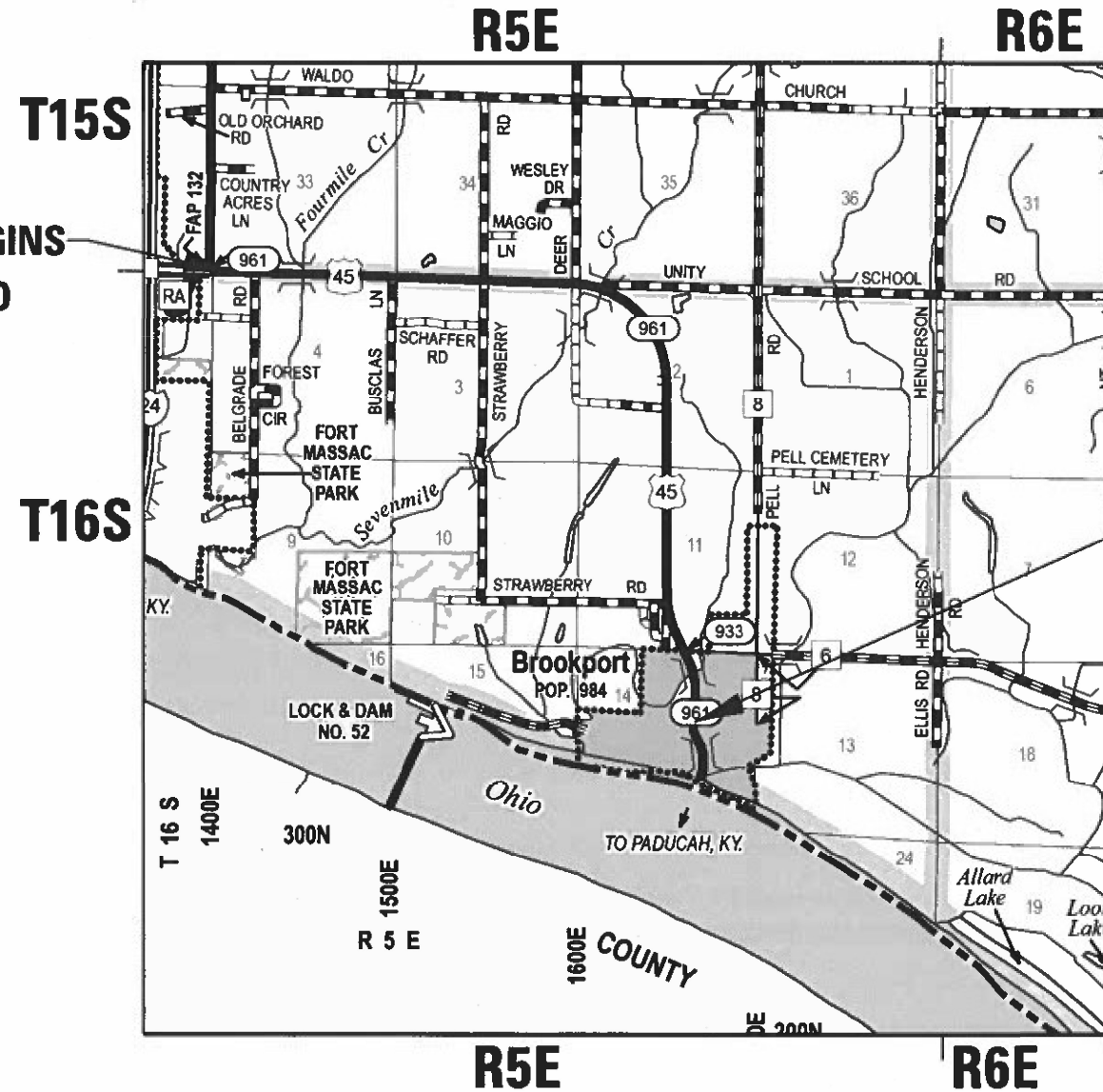
DESIGN DESIGNATION: NA  
COORDINATE SYSTEM: NAD83, (2011 ADJ) ILLINOIS EAST  
POSTED SPEED: 20,30,55 MPH

STATION EQUATION:  
262 + 97.50 BK = 262 + 93.50 AH

J.U.L.I.E.  
JOINT UTILITY LOCATION INFORMATION FOR EXCAVATORS  
1-800-892-0123  
OR 811

PROJECT MANAGER SUSAN POE  
PROJECT ENGINEER JAKE STARK

CONTRACT NO. 78924



PROJECT ENDS  
OHIO RIVER BRIDGE  
STA: 269 + 35

STATE OF ILLINOIS  
DEPARTMENT OF TRANSPORTATION

SUBMITTED May 26 2023  
Kirk H. Brown  
REGIONAL ENGINEER

August 18, 2023  
SAE. EKS  
ENGINEER OF DESIGN AND ENVIRONMENT

August 18, 2023  
Stephen M. Lewis  
DIRECTOR OF HIGHWAYS PROJECT IMPLEMENTATION

PRINTED BY THE AUTHORITY  
OF THE STATE OF ILLINOIS

GROSS LENGTH = 25100 FT = 4.75 MILES  
NET LENGTH = 24447 FT = 4.63 MILES



# INDEX OF SHEETS

SHEET NO	DESCRIPTION
1	COVER SHEET
2	SIGNATURE SHEET
3	INDEX OF SHEETS, STANDARDS, MTD TABLE
4	GENERAL NOTES, HMA MIX REQUIREMENTS
5-8	SUMMARY OF QUANTITIES
9-13	TYPICALS
14-22	SCHEDULES
23-26	ADA DETAILS
27	HMA TRANSITIONS
28	SIDEROAD AND ENTRANCE DETAILS
29	UNEVEN LANE, ROUGH GROVVED SURFACE, AND TEMP TRANSITIONS

# HIGHWAY STANDARDS

- 000001-08\_STANDARDSYMBOLSABBREVIATIONS-PATTERNS-001
- 001001-02\_AREASCFREINFREBARS
- 001006\_DECIMALOFINCH-FOOT
- 420001-10\_PAVEMENTJOINTS
- 424001-11\_PERPENDICULARCURBRAMPS
- 424006-05\_DIAGONALCURBRAMPS-054
- 424011-04\_CORNERPARALLELCURBRAMPS
- 424021-06\_DEPRESSEDCORNER-057
- 442201-03\_CLASSC-DPATCHES
- 606001-08\_CONCCURBTYPED-COMBOCONCC-G
- 701001-02\_OFFRDGP-2L2W-15FTMINFROMEOP
- 701006-05\_OFFRDGP-2L2W-15FTTOEOP
- 701306-04\_LNCLOSURE2L2W-SLOWMOVEOPDAYONLY45MPHORMORE
- 701311-03\_LNCLOSURE2L2W-MOVINGOPDAYONLY
- 701336-07\_LNCLOSURE2L2W-WORKAREASINSERIES45MPHORMORE
- 701501-06\_URBANLNCLOSURE2L2W-UNDIVIDED
- 701801-06\_SIDEWALKCORNERORCROSSWALKCLOSURE
- 701901-08\_TRAFCNTRLDEVICES
- 780001-05\_TYPICALPVMTMRKINGS
- 781001-04\_TYPICALAPPRAISEDREFLCPVMTMRKRS
- 701201-05\_LANE CLOSURE, 2L, 2VV, DAY ONLY, FOR SPEEDS >= 45 MPH

## MTD CROSSING RESTRICTIONS TABLE

ROUTE US 45 (FAS 961) SN & CENTERLINE STATION		EXISTING FILL HEIGHT OVER BOX CULVERT	THICKNESS OF EXISTING PAVEMENT OVER BOX CULVERT	MTD CROSSING RESTRICTIONS
		FOOT	FOOT	
SN 064-0042	STA 32+57	N/A	0.7'	EMPTY MTD ALLOWED WITH 40 TONS MAXIMUM GROSS WEIGHT
SN 064-0041	STA 120+75	N/A	0.7'	EMPTY MTD ALLOWED WITH 40 TONS MAXIMUM GROSS WEIGHT
SN 064-2002	STA 243+90	11.9'	0.96'	EMPTY MTD ALLOWED WITH 40 TONS MAXIMUM GROSS WEIGHT
SN 064-9901	STA 293+80	N/A	OPEN STEEL GRATING 0.42'	DO NOT CROSS

REV. - MS

MODEL: Default  
 FILE NAME: P:\11152626\Bentley.com\PROJECTS\78924\CADD\DATA\CAD\Sheets\78924\_Sheets.dgn

USER NAME = Jared.Harp	DESIGNED -	REVISED -	<b>STATE OF ILLINOIS DEPARTMENT OF TRANSPORTATION</b>	<b>INDEX OF SHEETS, STANDARDS, MTD TABLE</b>		F.A.S. RTE.	SECTION	COUNTY	TOTAL SHEETS	SHEET NO.
PLOT SCALE = 100.0000' / in.	DRAWN -	REVISED -				961	6R(RS-2)	MASSAC	29	3
PLOT DATE = 6/2/2023	CHECKED -	REVISED -		SCALE: SHEET OF SHEETS STA. TO STA.		CONTRACT NO. 78924				
	DATE -	REVISED -		ILLINOIS FED. AID PROJECT						

# GENERAL NOTES

FACTORS USED FOR ESTIMATING PLAN QUANTITIES ARE AS FOLLOWS AND SHALL NOT BE USED FOR THE BASIS OF FINAL QUANTITIES:

ALL HOT MIX ASPHALT 2.016 TONS/CU. YD.  
 ALL AGGREGATE 2.05 TONS/CU. YD.

THE QUANTITY OF SHORT TERM PAVEMENT MARKING SHOWN IN THE PLANS IS BASED ON ONE APPLICATION EACH FOR THE HMA SURFACE REMOVAL, BINDER COURSE, AND SURFACE COURSE

THE CONTRACTOR SHALL STAMP STATIONING IN THE PROPOSED HOT MIX ASPHALT SURFACE AT 300 FT INTERVALS ON ALTERNATING SIDES OF THE PAVEMENT AND AS DIRECTED BY THE ENGINEER. THE STATION SYMBOL STAMPS USED SHALL BE FURNISHED BY THE CONTRACTOR. THEY SHALL BE 5 1/2 IN. TALL, OF A DESIGN APPROVED BY THE ENGINEER, AND SHALL REMAIN THE PROPERTY OF THE CONTRACTOR.

HMA RESURFACING SHALL BE PLACED IN A SEQUENCE THAT WILL MINIMIZE THE TIME THE CENTERLINE EDGE IS EXPOSED TO TRAFFIC. WHEN AT THE END OF A DAY'S OPERATION THE EXPOSED CENTERLINE EDGE IS GREATER THAN 2,000 FT, THE CONTRACTOR SHALL BE REQUIRED TO PAVE IN THE ADJACENT LANE ON THE FOLLOWING WORK DAY. PRIOR TO WINTER SHUTDOWN, RESURFACING ON ADJACENT LANES IS TO BE BROUGHT UP TO THE SAME ELEVATION.

LONGITUDINAL JOINT SEALANT SHALL BE PLACED UNDER THE HMA SURFACE COURSE

VIBRATORY ROLLERS WILL NOT BE ALLOWED WITHIN THE CORPORATE LIMITS OF BROOKPORT

**COMMITMENTS:**

THE CONTRACTOR SHALL NOTIFY THE ENGINEER AT LEAST 5 DAYS IN ADVANCE OF STARTING ANY SIDEWALK WORK, ALLOWING THE ENGINEER ADEQUATE TIME TO CONTACT CITY OFFICIALS TO COORDINATE THE REMOVAL OF ALL PLANTERS, BENCHES, AND ANY OTHER STREET FURNITURE THAT MAY BE IN CONFLICT WITH THE CONSTRUCTION OF THE PROPOSED SIDEWALK WORK.  
 CONTACT INFORMATION: BROOKPORT CITY HALL: 618-564-2351

# HMA MIXTURE REQUIREMENTS TABLES

The following HMA mixture requirements are applicable for this project

Locations	HOT-MIX ASPHALT SURFACE COURSE
Mixture Use(s):	HOT-MIX ASPHALT SURFACE COURSE, MIX D, N70
AB/PG:	PG64-22
ABR % (Max):	SEE SPECIAL PROVISION
Design Air Voids:	4.0 %, 70 GYRATION DESIGN
Mixture Composition: (Gradation Mixture)	IL-9.5mm
Friction Aggregate:	MIX D
Mixture Weight:	112 LBS/SQ YD/IN
Quality Management Program:	PPF
Sublot Size:	1000 TON
Material Transfer Device (Required?)	YES, CLASS I

Locations	HOT-MIX ASPHALT BINDER COURSE
Mixture Use(s):	HOT-MIX ASPHALT BINDER COURSE, IL-9.5 FG,N70
AB/PG:	PG64-22
ABR % (Max):	SEE SPECIAL PROVISION
Design Air Voids:	4.0 %, 70 GYRATION DESIGN
Mixture Composition: (Gradation Mixture)	IL-9.5mm FINE GRADED
Friction Aggregate:	NONE
Mixture Weight:	112 LBS/SQ YD/IN
Quality Management Program:	QCP
Sublot Size:	1000 TON
Material Transfer Device (Required?)	YES, CLASS I

Locations	HOT-MIX ASPHALT SHOULDERS
Mixture Use(s):	HOT-MIX ASPHALT SURFACE COURSE, MIX C, N30
AB/PG:	PG64-22
ABR % (Max):	SEE SPECIAL PROVISION
Design Air Voids:	4.0 %, 30 GYRATION DESIGN
Mixture Composition: (Gradation Mixture)	IL-9.5mm L
Friction Aggregate:	NONE
Mixture Weight:	112 LBS/SQ YD/IN
Quality Management Program:	QC/QA
Sublot Size:	NA
Material Transfer Device (Required?)	NO

MODEL: Default  
 FILE: hma18.ctb  
 SUBJECT: hma18.ctb  
 PROJECT: 78924\CAD\Drawings\CAD\Drawings\78924\_Sheets.dwg  
 PLOT DATE: 6/2/2023

USER NAME = Jared.Haro	DESIGNED -	REVISED -
PLOT SCALE = 100,0000' / in.	DRAWN -	REVISED -
PLOT DATE = 6/2/2023	CHECKED -	REVISED -
	DATE -	REVISED -

**STATE OF ILLINOIS  
 DEPARTMENT OF TRANSPORTATION**

**GENERAL NOTES, HMA MIX REQUIREMENTS**

SCALE: SHEET 1 OF 1 SHEETS STA. TO STA.

F.A.S. RTE.	SECTION	COUNTY	TOTAL SHEETS	SHEET NO.
961	6R(RS-2)	MASSAC	29	4
CONTRACT NO. 78924				
ILLINOIS FED. AID PROJECT				

# SUMMARY OF QUANTITIES

COUNTY:	MASSAC CO
ROUTE:	FAS 961
FUNDING:	80% FEDERAL 20% STATE
LOCATION:	RURAL
TOTAL QUANTITY	ROADWAY 0005

CODE NUMBER	ITEM DESCRIPTION	UNIT	TOTAL QUANTITY	
40600290	BITUMINOUS MATERIALS (TACK COAT)	POUND	47,223	47,223
40600370	LONGITUDINAL JOINT SEALANT	FOOT	24,447	24,447
40600982	HOT-MIX ASPHALT SURFACE REMOVAL - BUTT JOINT	SQ YD	1,412	1,412
40600990	TEMPORARY RAMP	SQ YD	110	110
40602970	HOT-MIX ASPHALT BINDER COURSE, IL-9.5FG, N70	TON	4,642	4,642
40604062	HOT-MIX ASPHALT SURFACE COURSE, IL-9.5, MIX "D", N70	TON	5,574	5,574
40800050	INCIDENTAL HOT-MIX ASPHALT SURFACING	TON	274	274
42001300	PROTECTIVE COAT	SQ YD	39	39
42300300	PORTLAND CEMENT CONCRETE DRIVEWAY PAVEMENT, 7 INCH	SQ YD	8	8
42400800	DETECTABLE WARNINGS	SQ FT	71	71
44000100	PAVEMENT REMOVAL	SQ YD	9	9
44000152	HOT-MIX ASPHALT SURFACE REMOVAL, 3/4"	SQ YD	582	582
44000155	HOT-MIX ASPHALT SURFACE REMOVAL, 1 1/2"	SQ YD	63,277	63,277
44000159	HOT-MIX ASPHALT SURFACE REMOVAL, 2 1/2"	SQ YD	3,921	3,921

MODEL: Default  
 FILE NAME: P:\Illinois\Bentley.com\PROJECTS\78924\CADD\DATA\CAD\Sheets\78924\_Sheets.dgn

REV. - MS

USER NAME = Jared.Harp PLOT SCALE = 100.0000' / in. PLOT DATE = 6/2/2023	DESIGNED - DRAWN - CHECKED - DATE -	REVISED - REVISED - REVISED - REVISED -	<b>STATE OF ILLINOIS DEPARTMENT OF TRANSPORTATION</b>	<b>SUMMARY OF QUANTITIES</b>	SCALE:      SHEET    OF    SHEETS    STA.                    TO STA.
			F.A.S. RTE.      SECTION      COUNTY      TOTAL SHEETS      SHEET NO.		
			961      6R(RS-2)      MASSAC      29      5		
			CONTRACT NO. 78924		
			ILLINOIS FED. AID PROJECT		

# SUMMARY OF QUANTITIES - CONT

COUNTY:	MASSAC CO
ROUTE:	FAS 961
FUNDING:	80% FEDERAL 20% STATE
LOCATION:	RURAL
TOTAL QUANTITY	ROADWAY 0005

CODE NUMBER	ITEM DESCRIPTION	UNIT	TOTAL QUANTITY	
44000160	HOT-MIX ASPHALT SURFACE REMOVAL, 2 3/4"	SQ YD	1,133	1,133
44000500	COMBINATION CURB AND GUTTER REMOVAL	FOOT	173	173
44000600	SIDEWALK REMOVAL	SQ FT	986	986
44201389	CLASS C PATCHES, TYPE II, 13 INCH	SQ YD	1,262	1,262
44201394	CLASS C PATCHES, TYPE III, 13 INCH	SQ YD	128	128
44201396	CLASS C PATCHES, TYPE IV, 13 INCH	SQ YD	27	27
48102100	AGGREGATE WEDGE SHOULDER, TYPE B	TON	696	696
48203100	HOT-MIX ASPHALT SHOULDERS	TON	301	301
60255500	MANHOLES TO BE ADJUSTED	EACH	3	3
60603800	COMBINATION CONCRETE CURB AND GUTTER, TYPE B-6.12	FOOT	175	175
67100100	MOBILIZATION	L SUM	1	1
70100450	TRAFFIC CONTROL AND PROTECTION, STANDARD 701201	L SUM	1	1
70100460	TRAFFIC CONTROL AND PROTECTION, STANDARD 701306	L SUM	1	1

MODEL: Default  
 FILE: \\mailec-pw-backend.com\P\DOT\Documents\DOT Office\District 6\Project\78924\CADD\Drawn\CAD\Sheets\78924\_Sheets.dgn

# SUMMARY OF QUANTITIES - CONT

COUNTY:	MASSAC CO
ROUTE:	FAS 961
FUNDING:	80% FEDERAL 20% STATE
LOCATION:	RURAL
TOTAL QUANTITY	ROADWAY 0005

CODE NUMBER	ITEM DESCRIPTION	UNIT	TOTAL QUANTITY	ROADWAY 0005
70100600	TRAFFIC CONTROL AND PROTECTION, STANDARD 701336	L SUM	1	1
70102620	TRAFFIC CONTROL AND PROTECTION, STANDARD 701501	L SUM	1	1
70102640	TRAFFIC CONTROL AND PROTECTION, STANDARD 701801	L SUM	1	1
70107025	CHANGEABLE MESSAGE SIGN	CAL DA	28	28
70300100	SHORT TERM PAVEMENT MARKING	FOOT	7,410	7,410
70300150	SHORT TERM PAVEMENT MARKING REMOVAL	SQ FT	2,470	2,470
70300211	TEMPORARY PAVEMENT MARKING LETTERS AND SYMBOLS - PAINT	SQ FT	128	128
70300221	TEMPORARY PAVEMENT MARKING - LINE 4"- PAINT	FOOT	70,452	70,452
70300241	TEMPORARY PAVEMENT MARKING - LINE 6"- PAINT	FOOT	76	76
70300261	TEMPORARY PAVEMENT MARKING - LINE 12"- PAINT	FOOT	55	55
* 78000100	THERMOPLASTIC PAVEMENT MARKING - LETTERS AND SYMBOLS	SQ FT	128	128
* 78000200	THERMOPLASTIC PAVEMENT MARKING - LINE 4"	FOOT	70,452	70,452
* 78000400	THERMOPLASTIC PAVEMENT MARKING - LINE 6"	FOOT	76	76
* 78000600	THERMOPLASTIC PAVEMENT MARKING - LINE 12"	FOOT	55	55

\* SPECIALTY ITEM

REV. - MS

MODEL: Default  
 FILE NAME: P:\Illinois\Bentley.com\PROJECTS\78924\CADD\DATA\CAD\Sheets\78924\_Sheets.dgn

USER NAME = Jared.Harp DRAWN - PLOT SCALE = 100.0000' / in. PLOT DATE = 6/2/2023	DESIGNED - DRAWN - CHECKED - DATE -	REVISED - REVISED - REVISED + REVISED +	<b>STATE OF ILLINOIS DEPARTMENT OF TRANSPORTATION</b>	<b>SUMMARY OF QUANTITIES</b>	SCALE:	SHEET OF SHEETS STA. TO STA.	F.A.S. RTE. 961	SECTION 6R(RS-2)	COUNTY MASSAC	TOTAL SHEETS 29	SHEET NO. 7	CONTRACT NO. 78924 ILLINOIS FED. AID PROJECT
---	--	--	---	------------------------------	--------	------------------------------	--------------------	---------------------	------------------	--------------------	----------------	---

# SUMMARY OF QUANTITIES - CONT

COUNTY:	MASSAC CO
ROUTE:	FAS 961
FUNDING:	80% FEDERAL 20% STATE
LOCATION:	RURAL
TOTAL QUANTITY	ROADWAY 0005

CODE NUMBER	ITEM DESCRIPTION	UNIT	TOTAL QUANTITY	ROADWAY
* 78100100	RAISED REFLECTIVE PAVEMENT MARKER	EACH	309	309
78300200	RAISED REFLECTIVE PAVEMENT MARKER REMOVAL	EACH	309	309
78300201	PAVEMENT MARKING REMOVAL - GRINDING	SQ FT	23,705	23,705
X4240430	PORTLAND CEMENT CONCRETE SIDEWALK 5 INCH (SPECIAL)	SQ FT	949	949
X4401198	HOT-MIX ASPHALT SURFACE REMOVAL, VARIABLE DEPTH	SQ YD	2,208	2,208
Z0034105	MATERIAL TRANSFER DEVICE	TON	10,216	10,216

\* SPECIALTY ITEM

MODEL: Default  
 FILE: M:\GIS\Projects\78924\CADD\Drawings\CADD\Drawings\78924\_Sheets.dgn

REV. - MS

USER NAME = Jared.Harp PLOT SCALE = 100.0000' / in. PLOT DATE = 6/2/2023	DESIGNED - DRAWN - CHECKED - DATE -	REVISED - REVISED - REVISED + REVISED +	<b>STATE OF ILLINOIS DEPARTMENT OF TRANSPORTATION</b>	<b>SUMMARY OF QUANTITIES</b>	SCALE:	SHEET OF SHEETS STA. TO STA.	F.A.S. RTE. 961	SECTION 6R(RS-2)	COUNTY MASSAC	TOTAL SHEETS 29	SHEET NO. B	CONTRACT NO. 78924 ILLINOIS FED. AID PROJECT
--	--	--	---	------------------------------	--------	------------------------------	--------------------	---------------------	------------------	--------------------	----------------	---

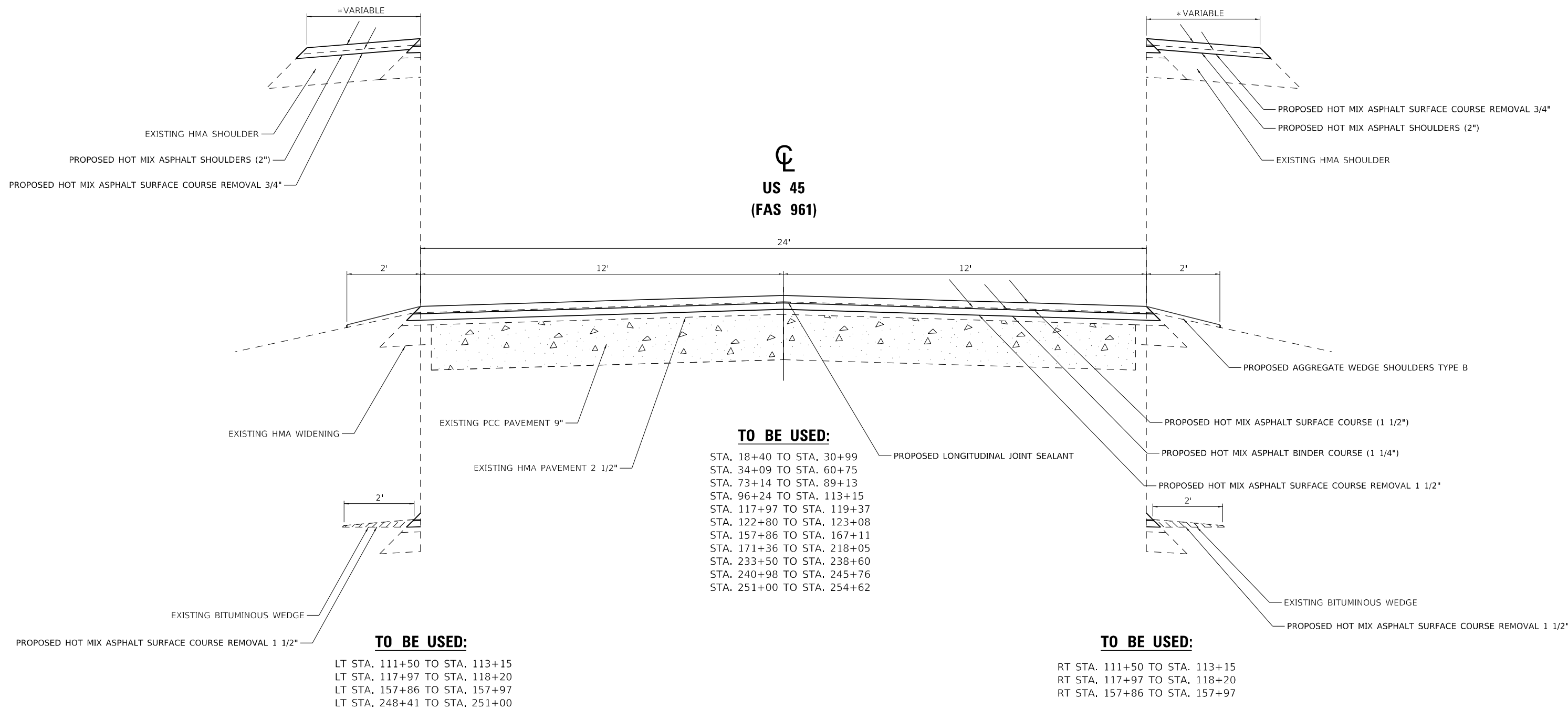


**TO BE USED:**

LT STA. 18+40 TO STA. 19+92  
 LT STA. 30+14 TO STA. 30+99  
 LT STA. 34+09 TO STA. 35+45  
 LT STA. 118+20 TO STA. 119+37  
 LT STA. 122+80 TO STA. 123+08

**TO BE USED:**

RT STA. 18+40 TO STA. 18+85  
 RT STA. 19+53 TO STA. 19+92  
 RT STA. 29+75 TO STA. 30+99  
 RT STA. 34+09 TO STA. 35+45  
 RT STA. 118+20 TO STA. 119+37  
 RT STA. 122+80 TO STA. 123+08



MODEL: Default  
 FILE: \\na11c1-pw-bentley.com\P\INDOT\Documents\DOT Office\Dir\ref: @Project\78924\CADD\Drawings\CAD\Sheets\78924\_Sheets.dgn

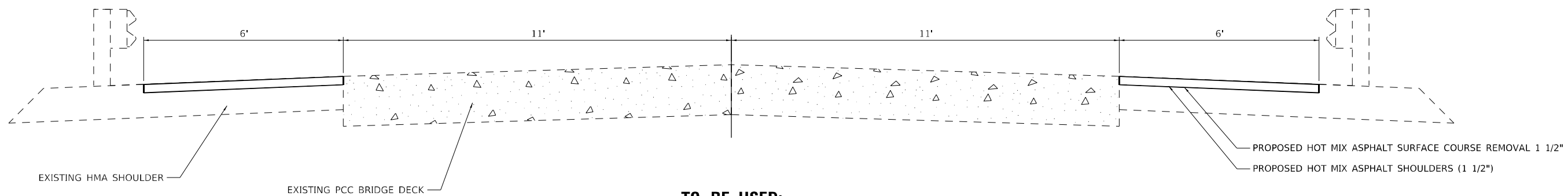
USER NAME = Jared.Haro	DESIGNED -	REVISED -
	DRAWN -	REVISED -
PLOT SCALE = 100,0000 ' / in.	CHECKED -	REVISED -
PLOT DATE = 6/2/2023	DATE -	REVISED -

**STATE OF ILLINOIS**  
**DEPARTMENT OF TRANSPORTATION**

SCALE:		SHEET OF SHEETS		STA. TO STA.	
		TYPICALS			

F.A.S. RTE.	SECTION	COUNTY	TOTAL SHEETS	SHEET NO.
961	6R(RS-2)	MASSAC	29	9
CONTRACT NO. 78924				
ILLINOIS FED. AID PROJECT				

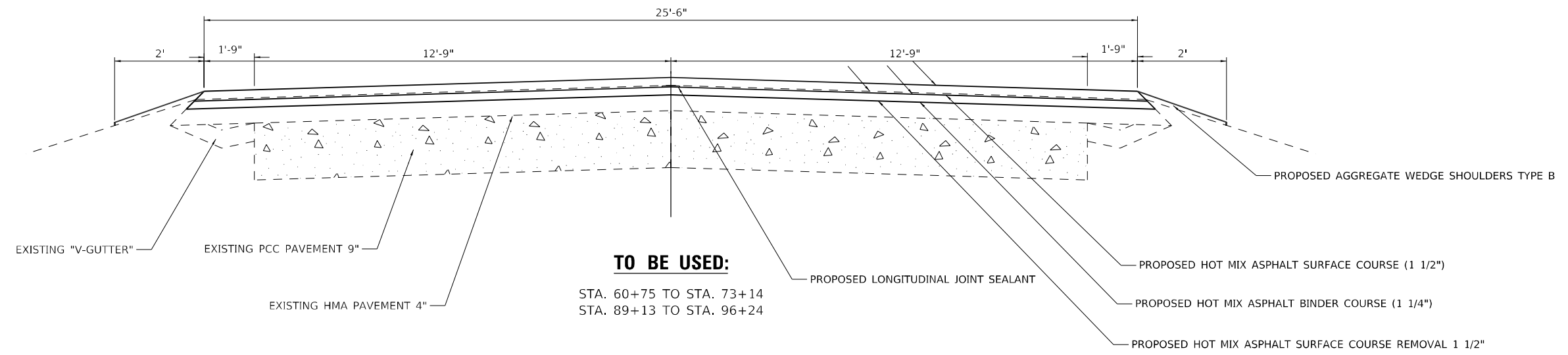
  
**US 45**  
**(FAS 961)**



**TO BE USED:**

- STA. 30+99 TO STA. 31+65 (SN 064-0042)
- STA. 33+45 TO STA. 34+09 (SN 064-0042)
- STA. 119+37 TO STA. 119+94 (SN 064-0042)
- STA. 121+48 TO STA. 122+80 (SN 064-0042)

  
**US 45**  
**(FAS 961)**



**TO BE USED:**

- STA. 60+75 TO STA. 73+14
- STA. 89+13 TO STA. 96+24

MODEL: Default  
 FILE: \\na11c1-pw-bentley.com\P\DOT\Documents\DOT Office\Dir\et 8\Project\78924\CADD\Drawn\CAD\Sheets\78924\_Sheets.dgn

USER NAME = Jared.Haro	DESIGNED -	REVISED -
	DRAWN -	REVISED -
PLOT SCALE = 100,0000' / in.	CHECKED -	REVISED -
PLOT DATE = 6/2/2023	DATE -	REVISED -

**STATE OF ILLINOIS**  
**DEPARTMENT OF TRANSPORTATION**

<b>TYPICALS</b>	
SCALE:	SHEET OF SHEETS STA. TO STA.

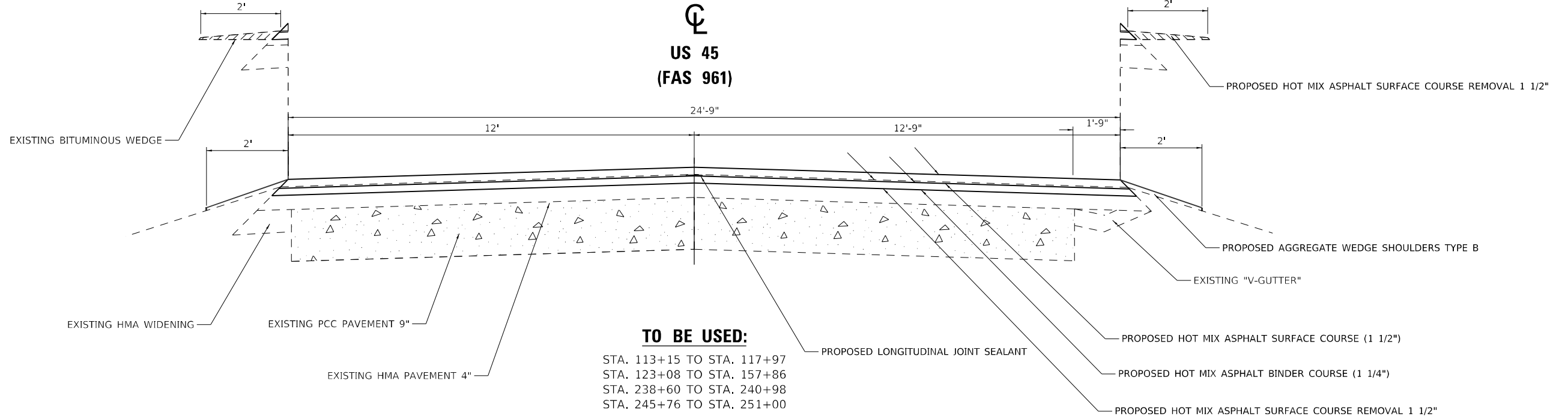
F.A.S. RTE.	SECTION	COUNTY	TOTAL SHEETS	SHEET NO.
961	6R(RS-2)	MASSAC	29	10
CONTRACT NO. 78924				
ILLINOIS FED. AID PROJECT				

**TO BE USED:**

LT STA. 113+15 TO STA. 117+97  
 LT STA. 123+08 TO STA. 157+86

**TO BE USED:**

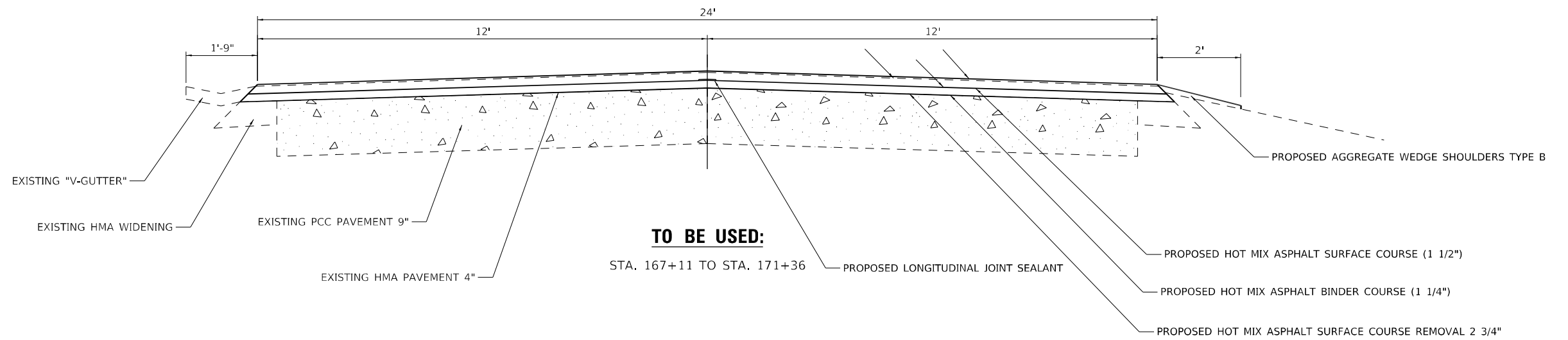
RT STA. 113+15 TO STA. 117+97  
 RT STA. 123+08 TO STA. 157+86



**TO BE USED:**

STA. 113+15 TO STA. 117+97  
 STA. 123+08 TO STA. 157+86  
 STA. 238+60 TO STA. 240+98  
 STA. 245+76 TO STA. 251+00

**US 45  
 (FAS 961)**



**TO BE USED:**

STA. 167+11 TO STA. 171+36

MODEL: Default  
 FILE: \\maile.pva\public\aw\_bentley.com\PIV\DOT\Documents\DOT\_Offices\Dir\ref: @\Project\78924\CADD\Drawn\CAD\Sheets\78924\_Sheets.dgn

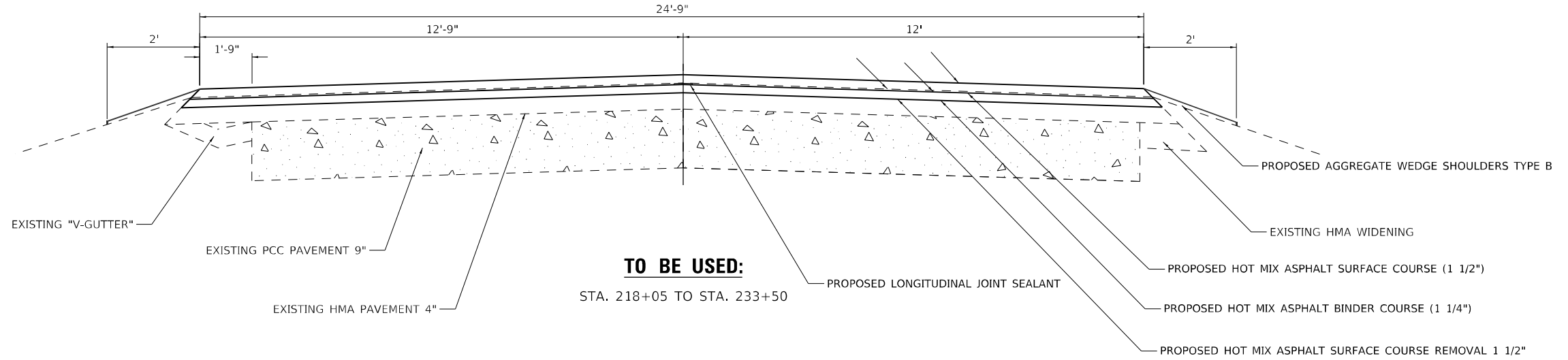
USER NAME = Jared.Haro	DESIGNED -	REVISED -
	DRAWN -	REVISED -
PLOT SCALE = 100,0000 ' / in.	CHECKED -	REVISED -
PLOT DATE = 6/2/2023	DATE -	REVISED -

**STATE OF ILLINOIS  
 DEPARTMENT OF TRANSPORTATION**

<b>TYPICALS</b>	
SCALE:	SHEET OF SHEETS STA. TO STA.

F.A.S. RTE. 961	SECTION 6R(RS-2)	COUNTY MASSAC	TOTAL SHEETS 29	SHEET NO. 11
CONTRACT NO. 78924				
ILLINOIS FED. AID PROJECT				

  
**US 45**  
**(FAS 961)**

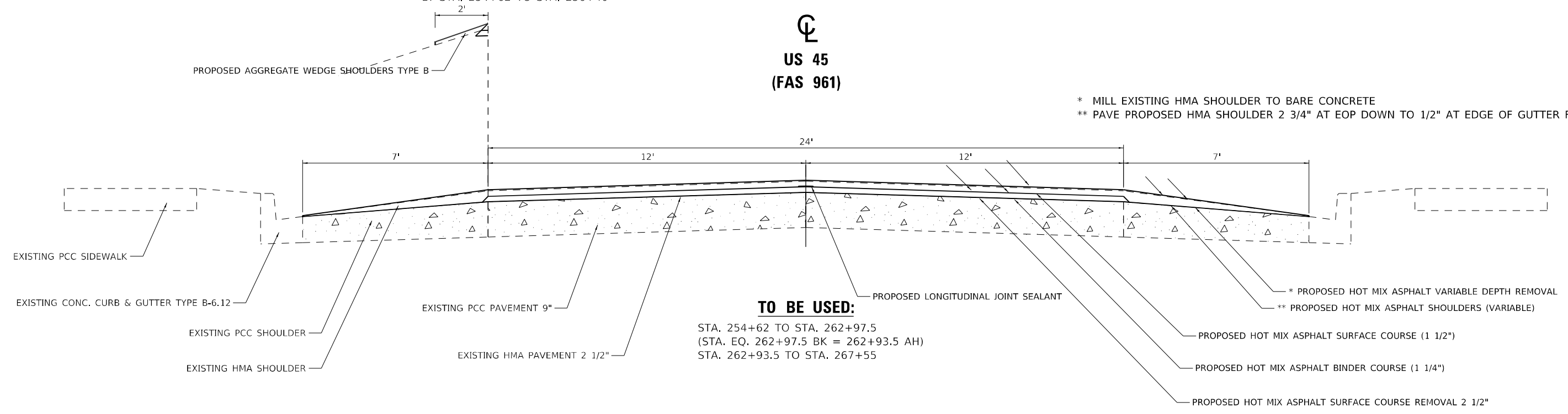


**TO BE USED:**  
STA. 218+05 TO STA. 233+50

**TO BE USED:**

LT STA. 254+62 TO STA. 256+40

  
**US 45**  
**(FAS 961)**



**TO BE USED:**  
STA. 254+62 TO STA. 262+97.5  
(STA. EQ. 262+97.5 BK = 262+93.5 AH)  
STA. 262+93.5 TO STA. 267+55

\* MILL EXISTING HMA SHOULDER TO BARE CONCRETE  
\*\* PAVE PROPOSED HMA SHOULDER 2 3/4" AT EOP DOWN TO 1/2" AT EDGE OF GUTTER FLAG

MODEL: Default  
 FILE: \\blmfc-pw-bentley.com\P\DOT\Documents\DOT Office\Dir\ref: @Project\78924\CADD\Drawings\CAD\Sheets\78924\_Sheets.dgn

USER NAME = Jared.Haro	DESIGNED -	REVISED -
PLOT SCALE = 100,0000' / in.	DRAWN -	REVISED -
PLOT DATE = 6/2/2023	CHECKED -	REVISED -
	DATE -	REVISED -

**STATE OF ILLINOIS**  
**DEPARTMENT OF TRANSPORTATION**

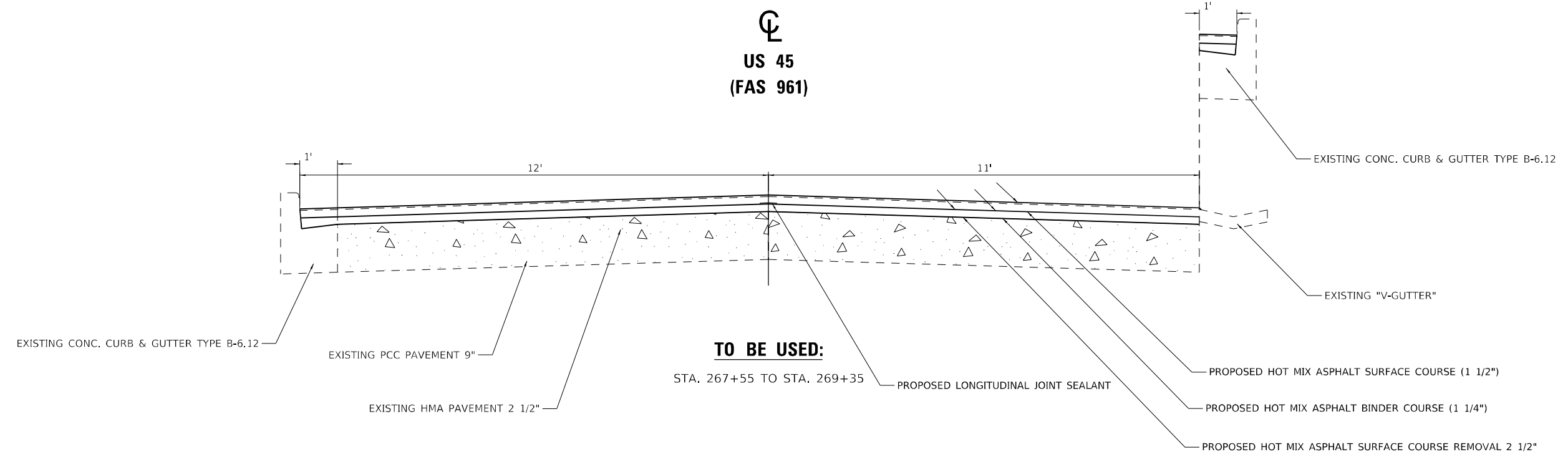
<b>TYPICALS</b>	
SCALE:	SHEET OF SHEETS STA. TO STA.

F.A.S. RTE.	SECTION	COUNTY	TOTAL SHEETS	SHEET NO.
961	6R(RS-2)	MASSAC	29	12
CONTRACT NO. 78924				
ILLINOIS FED. AID PROJECT				

  
**US 45**  
**(FAS 961)**

**TO BE USED:**

LT STA. 268+50 TO STA. 269+35



**TO BE USED:**

STA. 267+55 TO STA. 269+35

MODEL: Default  
 FILE: \\na11c01.pw.bentley.com\PW\DOT\Documents\DOT Office\Dir\drt\_01\Project\78924\CADD\Drawn\CAD\Drawn\78924\_Sheets.dgn

USER NAME = Jared.Haro	DESIGNED -	REVISED -
	DRAWN -	REVISED -
PLOT SCALE = 100,0000 ' / in.	CHECKED -	REVISED -
PLOT DATE = 6/2/2023	DATE -	REVISED -

**STATE OF ILLINOIS**  
**DEPARTMENT OF TRANSPORTATION**

SCALE:		SHEET OF SHEETS		STA. TO STA.		TYPICALS	

F.A.S. RTE.	SECTION	COUNTY	TOTAL SHEETS	SHEET NO.
961	6R(RS-2)	MASSAC	29	13
CONTRACT NO. 78924				



## SHOULDER SCHEDULE

LOCATION STATION TO STATION	LENGTH	SHOULDER WIDTH	HOT-MIX ASPHALT SURFACE REMOVAL 3/4"	HOT-MIX ASPHALT SURFACE REMOVAL 1 1/2"	HOT-MIX ASPHALT SURFACE REMOVAL VARIABLE	HOT-MIX ASPHALT SHOULDERS			BITUMINOUS MATERIALS TACK COAT	REMARKS
						(2")	(1 1/2")	(VARIABLE)		
	(FEET)	(FEET)	(SQ YD)	(SQ YD)	(SQ YD)	(TON)	(TON)	(TON)	(POUND)	
<b>US 45 (FAS 961)</b>										
LT 18+40 TO 19+92	152	7	118			13			53	MATCH EXISTING
RT 18+40 TO 18+85	45	7	35			4			16	OMIT BELGRADE ROAD
RT 19+53 TO 19+92	39	VARIABLE	22			2			10	MATCH EXISTING
RT 29+75 TO 30+99	124	VARIABLE	55			6			25	MATCH EXISTING
LT 30+14 TO 30+99	85	VARIABLE	43			5			19	MATCH EXISTING
30+99 TO 31+65	66	6		88			7		40	SN 064-0042
33+45 TO 34+09	64	6		85			7		38	SN 064-0042
34+09 TO 35+45	136	VARIABLE	151			17			68	MATCH EXISTING
118+20 TO 119+37	117	VARIABLE	130			15			59	MATCH EXISTING
119+37 TO 119+94	57	6		70			6		31	SN 064-0041
121+48 TO 122+80	132	6		161			14		73	SN 064-0041
122+80 TO 123+08	28	VARIABLE	28			3			13	MATCH EXISTING
RT 254+62 TO 256+40	178	7			138			13	62	
256+40 TO 262+97.5	658	7			1,024			93	461	
<b>STA. EQ. 262+97.5 BK = 262.93.5 AH</b>										
LT 262+93.5 TO 267+55	462	7			359			33	162	
RT 262+93.5 TO 260+04	290	7			226			21	102	OMIT SHOULDER ON OHIO STREET
RT 261+62 TO 267+55	593	7			461			42	208	
<b>TOTAL</b>	<b>3,226</b>		<b>582</b>	<b>404</b>	<b>2,208</b>		<b>301</b>		<b>1,440</b>	

MODEL: Default  
 FILE: \\malfp-pw-bufile.com\PW\DOT\Documents\DOT Office\Dir\rdet @Project\78924\CADD\Drawn\CAD\Sheets\78924\_Sheets.dgn

USER NAME = Jared.Haro	DESIGNED -	REVISED -
	DRAWN -	REVISED -
PLOT SCALE = 100,0000' / in.	CHECKED -	REVISED -
PLOT DATE = 6/2/2023	DATE -	REVISED -

**STATE OF ILLINOIS  
DEPARTMENT OF TRANSPORTATION**

**SHOULDER SCHEDULE**

SCALE: SHEET OF SHEETS STA. TO STA.

F.A.S. RTE.	SECTION	COUNTY	TOTAL SHEETS	SHEET NO.
961	6R(RS-2)	MASSAC	29	15
CONTRACT NO. 78924				
ILLINOIS FED. AID PROJECT				





## U.S. 45 WESTBOUND PATCHING

PATCH NO.	LENGTH	WIDTH	CLASS C PATCHES TYPE II 13 INCH	CLASS C PATCHES TYPE III 13 INCH	CLASS C PATCHES TYPE IV 13 INCH
U.S. 45 WESTBOUND			(SQ YD)	(SQ YD)	(SQ YD)
1	6	12	8		
2	10	12	13		
3	6	12	8		
4	6	12	8		
5	6	12	8		
6	6	12	8		
7	6	12	8		
8	6	12	8		
9	6	12	8		
10	6	12	8		
11	6	12	8		
12	6	12	8		
13	6	12	8		
14	6	12	8		
15	6	12	8		
16	6	12	8		
17	6	12	8		
18	6	12	8		
19	8	12	11		
20	6	12	8		
21	6	12	8		
22	6	12	8		
23	6	12	8		
24	6	12	8		
25	6	12	8		
26	6	12	8		
27	10	12	13		
28	6	12	8		
29	6	12	8		
30	6	12	8		
31	6	12	8		
32	6	12	8		
33	6	12	8		
34	12	12		16	
35	6	12	8		
36	6	12	8		
37	6	12	8		
38	6	12	8		
39	8	12	11		
40	6	12	8		
41	6	12	8		
42	6	12	8		
43	6	12	8		

## U.S. 45 WESTBOUND PATCHING

PATCH NO.	LENGTH	WIDTH	CLASS C PATCHES TYPE II 13 INCH	CLASS C PATCHES TYPE III 13 INCH	CLASS CPATCHES TYPE IV 13 INCH
U.S. 45 WESTBOUND			(SQ YD)	(SQ YD)	(SQ YD)
44	6	12	8		
45	12	12		16	
46	8	12	11		
47	6	12	8		
48	6	12	8		
49	6	12	8		
50	6	12	8		
51	6	12	8		
52	6	12	8		
53	6	12	8		
54	8	12	11		
55	8	12	11		
56	6	12	8		
57	6	12	8		
58	6	12	8		
59	8	12	11		
60	6	12	8		
61	6	12	8		
62	15	12		20	
63	6	12	8		
64	6	12	8		
65	6	12	8		
66	6	12	8		
67	6	12	8		
68	6	12	8		
69	6	12	8		
70	6	12	8		
71	6	12	8		
72	6	12	8		
73	6	12	8		
74	6	12	8		
75	6	12	8		
76	6	12	8		
77	6	12	8		
78	6	12	8		
79	6	12	8		
80	6	12	8		
81	6	12	8		
82	6	12	8		
83	6	12	8		
84	6	12	8		
85	6	12	8		
<b>SUBTOTAL</b>			<b>684</b>	<b>52</b>	<b>0</b>

MODEL: Default  
 FILE: \\malfp01\pub\ludat-pw-bentley.com\PIV\DOT\Documents\DOT Office\Dir\drct\_@Project\78924\CADD\Drawn\CAD\Sheets\78924\_Sheets.dgn

USER NAME = Jared.Haro	DESIGNED -	REVISED -
	DRAWN -	REVISED -
PLOT SCALE = 100,0000' / in.	CHECKED -	REVISED -
PLOT DATE = 6/2/2023	DATE -	REVISED -

**STATE OF ILLINOIS  
DEPARTMENT OF TRANSPORTATION**

**PATCHING SCHEDULE**

SCALE: SHEET OF SHEETS STA. TO STA.

F.A.S. RTE.	SECTION	COUNTY	TOTAL SHEETS	SHEET NO.
961	6R(RS-2)	MASSAC	29	17
CONTRACT NO. 78924				
ILLINOIS FED. AID PROJECT				

## U.S. 45 EASTBOUND PATCHING

PATCH NO.	LENGTH	WIDTH	CLASS C PATCHES TYPE II 13 INCH	CLASS C PATCHES TYPE III 13 INCH	CLASS C PATCHES TYPE IV 13 INCH
U.S. 45 EASTBOUND			(SQ YD)	(SQ YD)	(SQ YD)
1	6	12	8		
2	6	12	8		
3	6	12	8		
4	6	12	8		
5	6	12	8		
6	12	12		16	
7	6	12	8		
8	6	12	8		
9	6	12	8		
10	6	12	8		
11	6	12	8		
12	6	12	8		
13	6	12	8		
14	8	12	11		
15	6	12	8		
16	6	12	8		
17	6	12	8		
18	6	12	8		
19	6	12	8		
20	6	12	8		
21	6	12	8		
22	6	12	8		
23	6	12	8		
24	6	12	8		
25	6	12	8		
26	6	12	8		
27	12	12		16	
28	6	12	8		
29	6	12	8		
30	6	12	8		
31	6	12	8		
32	8	12	11		
33	6	12	8		
34	6	12	8		
35	18	12		24	
36	6	12	8		
37	6	12	8		
38	20	12			27
39	8	12	11		
40	6	12	8		
41	6	12	8		
42	6	12	8		
43	6	12	8		

## U.S. 45 EASTBOUND PATCHING

PATCH NO.	LENGTH	WIDTH	CLASS C PATCHES TYPE II 13 INCH	CLASS C PATCHES TYPE III 13 INCH	CLASS C PATCHES TYPE IV 13 INCH
U.S. 45 EASTBOUND			(SQ YD)	(SQ YD)	(SQ YD)
44	6	12	8		
45	6	12	8		
46	6	12	8		
47	8	12	11		
48	8	12	11		
49	6	12	8		
50	6	12	8		
51	6	12	8		
52	6	12	8		
53	6	12	8		
54	6	12	8		
55	15	12		20	
56	6	12	8		
57	6	12	8		
58	6	12	8		
59	6	12	8		
60	6	12	8		
61	6	12	8		
62	6	12	8		
63	8	12	11		
64	6	12	8		
65	6	12	8		
66	6	12	8		
67	6	12	8		
68	6	12	8		
69	6	12	8		
70	6	12	8		
71	6	12	8		
72	6	12	8		
73	6	12	8		
74	6	12	8		
75	6	12	8		
<b>SUBTOTAL</b>			<b>578</b>	<b>76</b>	<b>27</b>
<b>TOTAL</b>			<b>1262</b>	<b>128</b>	<b>27</b>

MODEL: Default  
 FILE: \\malfp01\pub\project\aw\_benefits\com\PIV\DOT\Documents\DOT\_Offices\Director\_@Project\78924\CADD\Drawings\CAD\Sheets\78924\_Sheets.dgn

USER NAME = Jared.Haro	DESIGNED -	REVISED -
PLOT SCALE = 100,0000' / in.	DRAWN -	REVISED -
PLOT DATE = 6/2/2023	CHECKED -	REVISED -
	DATE -	REVISED -

**STATE OF ILLINOIS  
DEPARTMENT OF TRANSPORTATION**

**PATCHING SCHEDULE**

SCALE: SHEET OF SHEETS STA. TO STA.

F.A.S. RTE.	SECTION	COUNTY	TOTAL SHEETS	SHEET NO.
961	6R(RS-2)	MASSAC	29	18
CONTRACT NO. 78924				
ILLINOIS FED. AID PROJECT				



## ENTRANCE SCHEDULE US 45 CONTINUED

LOCATION			AVERAGE WIDTH	EXISTING SURFACE TYPE	PROPOSED SURFACE TYPE	PROPOSED AREA	INCIDENTAL HMA SURFACING	BITUMINOUS MATERIAL (TACK COAT)	HMA SURFACE REMOVAL BUTT JOINT	TEMPORARY RAMP	AGGGREGATE WEDGE SHOULDER, TYPE B	REMARKS	
SIDE	STATION	ENTRANCE TYPE				(SQ FT)	(TONS)	(POUND)	(SQ YD)	(SQ YD)	(TON)		
RT	86+76	STRAWBERRY RD S	50	O&C	BITUMINOUS	750	7	38	84	6			
RT	87+40	PRIVATE	24	AGGREGATE	BITUMINOUS	96	1	5			1		
LT	87+61	PRIVATE	26	AGGREGATE	BITUMINOUS	104	1	6			1		
RT	88+19	PRIVATE	24	AGGREGATE	BITUMINOUS	96	1	5			1		
LT	89+62	PRIVATE	30	AGGREGATE	BITUMINOUS	120	2	6			1		
LT	94+65	PRIVATE	20	AGGREGATE	BITUMINOUS	80	1	4			1	FIELD ENTRANCE	
LT	97+16	PRIVATE	46	AGGREGATE	BITUMINOUS	184	2	10			1		
LT	102+18	PRIVATE	32	AGGREGATE	BITUMINOUS	128	2	7			1		
LT	103+97	PRIVATE	22	AGGREGATE	BITUMINOUS	88	1	5			1		
LT	106+46	PRIVATE	26	BITUMINOUS	BITUMINOUS	104	1	6					
LT	107+19	PRIVATE	28	AGGREGATE	BITUMINOUS	112	2	6			1		
LT	113+76	DEER RUN RD N	60	O&C	BITUMINOUS	900	9	45	100	7			
RT	113+84	DEER RUN RD S	45	O&C	BITUMINOUS	675	7	34	75	5			
RT	121+86	ROLLING MEADOWS RD	32	O&C	BITUMINOUS	480	5	24	54	4			
LT	122+29	UNITY SCHOOL RD	60	O&C	BITUMINOUS	900	9	45	100	7			
RT	138+71	PRIVATE	36	AGGREGATE	BITUMINOUS	144	2	8			1		
LT	142+50	PRIVATE	36	AGGREGATE	BITUMINOUS	144	2	8			1		
RT	142+52	PRIVATE	30	BITUMINOUS	BITUMINOUS	120	2	6					
LT	143+58	PRIVATE	26	AGGREGATE	BITUMINOUS	104	1	6			1		
RT	145+24	PRIVATE	26	BITUMINOUS	BITUMINOUS	104	1	6					
RT	146+43	PRIVATE	28	AGGREGATE	BITUMINOUS	112	2	6			1		
LT	146+97	PRIVATE	35	BITUMINOUS	BITUMINOUS	140	2	7					
RT	147+68	PRIVATE	22	AGGREGATE	BITUMINOUS	88	1	5			1		
LT	149+48	PRIVATE	40	AGGREGATE	BITUMINOUS	160	2	8			1		
RT	150+12	HILL BROOK LANE	30	O&C	BITUMINOUS	450	5	23	50	3			
RT	152+34	PRIVATE	22	AGGREGATE	BITUMINOUS	88	1	5			1		
LT	153+50	PRIVATE	40	AGGREGATE	BITUMINOUS	160	2	8			1		
RT	155+44	PRIVATE	24	BITUMINOUS	BITUMINOUS	96	1	5					
RT	156+55	PRIVATE	24	PCC	BITUMINOUS	96	1	5					
RT	164+73	DEER RUN ROAD	41	O&C	BITUMINOUS	615	6	31	69	5			
RT	165+71	PRIVATE	40	AGGREGATE	BITUMINOUS	160	2	8			1		
LT	166+76	PRIVATE	20	AGGREGATE	BITUMINOUS	80	1	4			1		
RT	171+54	PRIVATE	22	AGGREGATE	BITUMINOUS	88	1	5			1		
RT	172+22	PRIVATE	26	AGGREGATE	BITUMINOUS	104	1	6			1		
RT	172+74	PRIVATE	23	AGGREGATE	BITUMINOUS	92	1	5			1		
RT	174+23	PRIVATE	32	AGGREGATE	BITUMINOUS	128	2	7			1		
RT	174+88	PRIVATE	23	AGGREGATE	BITUMINOUS	92	1	5			1		
<b>SUB - TOTAL</b>								<b>91</b>	<b>423</b>	<b>532</b>	<b>37</b>	<b>24</b>	

MODEL: Default  
 FILE: \\blmfc-pw-backend.com\FW\DOT\Documents\DOT Office\Dir\rdet\_8\Project\78924\CADD\Drawings\CAD\Sheets\78924\_Sheets.dgn

USER NAME = Jared.Haro	DESIGNED -	REVISED -
	DRAWN -	REVISED -
PLOT SCALE = 100,0000' / in.	CHECKED -	REVISED -
PLOT DATE = 6/2/2023	DATE -	REVISED -

**STATE OF ILLINOIS  
DEPARTMENT OF TRANSPORTATION**

**ENTRANCE SCHEDULE**

SCALE: SHEET OF SHEETS STA. TO STA.

F.A.S. RTE.	SECTION	COUNTY	TOTAL SHEETS	SHEET NO.
961	6R(RS-2)	MASSAC	29	20
CONTRACT NO. 78924				
ILLINOIS FED. AID PROJECT				

## ENTRANCE SCHEDULE US 45 CONTINUED

LOCATION			AVERAGE WIDTH	EXISTING SURFACE TYPE	PROPOSED SURFACE TYPE	PROPOSED AREA	INCIDENTAL HMA SURFACING	BITUMINOUS MATERIAL (TACK COAT)	HMA SURFACE REMOVAL BUTT JOINT	TEMPORARY RAMP	AGGGREGATE WEDGE SHOULDER, TYPE B	REMARKS	
SIDE	STATION	ENTRANCE TYPE				(SQ FT)	(TONS)	(POUND)	(SQ YD)	(SQ YD)	(TON)		
LT	175+17	PRIVATE	25	AGGREGATE	BITUMINOUS	100	1	5			1		
RT	175+48	PRIVATE	24	AGGREGATE	BITUMINOUS	96	1	5			1		
RT	175+71	PRIVATE	18	AGGREGATE	BITUMINOUS	72	1	4			1		
RT	176+45	PRIVATE	26	AGGREGATE	BITUMINOUS	104	1	6			1		
LT	176+71	PRIVATE	28	AGGREGATE	BITUMINOUS	112	2	6			1		
LT	178+33	PRIVATE	48	BITUMINOUS	BITUMINOUS	192	2	10					
RT	178+47	PRIVATE	27	AGGREGATE	BITUMINOUS	108	2	6			1		
LT	180+94	PRIVATE	30	BITUMINOUS	BITUMINOUS	120	2	6					
LT	182+52	PRIVATE	22	AGGREGATE	BITUMINOUS	88	1	5			1	FIELD ENTRANCE	
LT	184+78	PRIVATE	22	AGGREGATE	BITUMINOUS	88	1	5			1	FIELD ENTRANCE	
RT	188+19	PRIVATE	48	AGGREGATE	BITUMINOUS	192	2	10			1		
LT	189+25	PRIVATE	24	AGGREGATE	BITUMINOUS	96	1	5			1		
RT	189+60	PRIVATE	48	AGGREGATE	BITUMINOUS	192	2	10			1		
LT	189+95	PRIVATE	32	AGGREGATE	BITUMINOUS	128	2	7			1		
RT	192+49	SMITHS SAWMILL LN	48	AGGREGATE	BITUMINOUS	720	12	36	80	5	1		
RT	193+59	PRIVATE	36	AGGREGATE	BITUMINOUS	144	2	8			1		
RT	194+38	PRIVATE	36	AGGREGATE	BITUMINOUS	144	2	8			1		
LT	195+40	PRIVATE	36	AGGREGATE	BITUMINOUS	144	2	8			1		
RT	195+64	PRIVATE	22	AGGREGATE	BITUMINOUS	88	1	5			1		
LT	203+36	PRIVATE	46	AGGREGATE	BITUMINOUS	184	2	10			1		
RT	204+05	PRIVATE	32	BITUMINOUS	BITUMINOUS	128	2	7					
RT	207+13	PRIVATE	45	BITUMINOUS	BITUMINOUS	180	2	9					
LT	215+42	PRIVATE	32	AGGREGATE	BITUMINOUS	128	2	7			1		
RT	222+48	STRAWBERRY/CROCKETT	68	O&C	BITUMINOUS	1020	10	51	114	8			
RT	236+84	UNIONVILLE RD W	40	O&C	BITUMINOUS	600	6	30	67	4			
LT	237+32	UNIONVILLE RD E	40	O&C	BITUMINOUS	600	6	30	67	4			
LT	246+50	E 8TH ST	46	O&C	BITUMINOUS	690	7	35	77	5			
RT	248+00	PRIVATE	18	AGGREGATE	BITUMINOUS	72	1	4			1		
LT	248+80	COMMERCIAL	35	PCC	BITUMINOUS	525	5	27	59	4		DOLLAR GENERAL	
RT	251+33	PRIVATE	18	AGGREGATE	BITUMINOUS	72	1	4			1		
LT	251+47	E 7TH ST	45	O&C	BITUMINOUS	675	7	34	75	5			
LT	251+98	PRIVATE	18	AGGREGATE	BITUMINOUS	72	1	4			1		
RT	252+22	W 5TH ST	24	AGGREGATE	BITUMINOUS	360	6	18	40	3	1		
RT	253+43	PRIVATE	18	AGGREGATE	BITUMINOUS	72	1	4			1		
RT	253+63	PRIVATE	18	AGGREGATE	BITUMINOUS	72	1	4			1		
RT	254+50	PRIVATE	26	AGGREGATE	BITUMINOUS	104	1	6			1		
<b>SUB - TOTAL</b>								<b>101</b>	<b>439</b>	<b>579</b>	<b>38</b>	<b>26</b>	
<b>TOTAL</b>								<b>274</b>	<b>1218</b>	<b>1412</b>	<b>95</b>	<b>70</b>	

MODEL: Default  
 FILE: \\blmfc-pw-bendley.com\P\DOT\Documents\DOT Office\Dir\rdet\_8\Project\78924\CAD\Drawings\CAD\Sheets\78924\_Sheets.dgn

USER NAME = Jared.Haro	DESIGNED -	REVISED -
	DRAWN -	REVISED -
PLOT SCALE = 100,0000' / in.	CHECKED -	REVISED -
PLOT DATE = 6/2/2023	DATE -	REVISED -

**STATE OF ILLINOIS  
DEPARTMENT OF TRANSPORTATION**

<b>ENTRANCE SCHEDULE</b>			
SCALE:	SHEET	OF	SHEETS
	STA.	TO	STA.

F.A.S. RTE.	SECTION	COUNTY	TOTAL SHEETS	SHEET NO.
961	6R(RS-2)	MASSAC	29	21
CONTRACT NO. 78924				
ILLINOIS FED. AID PROJECT				

# SIDEWALK SCHEDULE

LOCATION	PAVEMENT REMOVAL	SIDEWALK REMOVAL	COMB. CURB & GUTTER REMOVAL	PCC SIDEWALK 5"	COMB. CONC. CURB & GUTTER TYPE B- 6.12	DRIVEWAY PAVEMENT 7"	DETECTABLE WARNINGS	PROTECTIVE COAT
	(SQ YD)	(SQ FT)	(FT)	(SQ FT)	(FT)	(SQ YD)	(SQ FT)	(SQ YD)
<b>2ND STREET</b>								
NW QUADRANT		160	17	133	17		11	4
SW QUADRANT		292	61	284	61		8	14
SE QUADRANT	9	70	10	102	10	8	8	2
<b>SUBTOTAL</b>	<b>9</b>	<b>522</b>	<b>88</b>	<b>519</b>	<b>88</b>	<b>8</b>	<b>27</b>	<b>20</b>
<b>3RD STREET</b>								
NW QUADRANT		66	16	74	16		10	4
NE QUADRANT		143	28	80	28		10	6
SW QUADRANT		179	31	192	33		14	7
SE QUADRANT		76	10	84	10		10	2
<b>SUBTOTAL</b>	<b>0</b>	<b>464</b>	<b>85</b>	<b>430</b>	<b>87</b>	<b>0</b>	<b>44</b>	<b>19</b>
<b>TOTAL</b>	<b>9</b>	<b>986</b>	<b>173</b>	<b>949</b>	<b>175</b>	<b>8</b>	<b>71</b>	<b>39</b>

\* ALL GRADING NEEDED IS INCLUDED IN THE COST OF PCC 5" SIDEWALK

MODEL: Default  
 FILE: \\malfc-pw-bentley.com\PW\DOT\Documents\DOT Office\Dir\dir: @Project\78924\CADD\Drawn\CAD\Sheets\78924\_Sheets.dgn

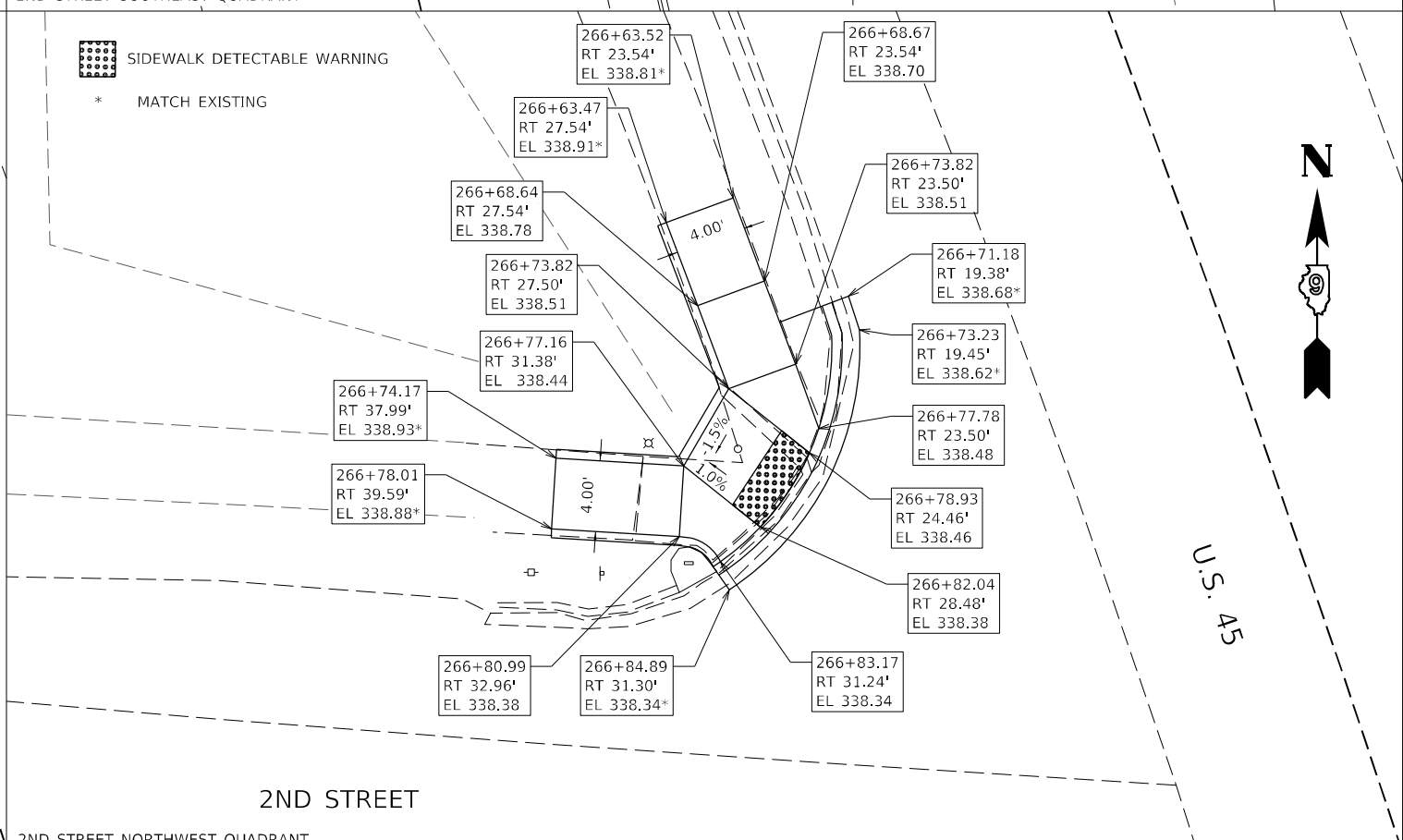
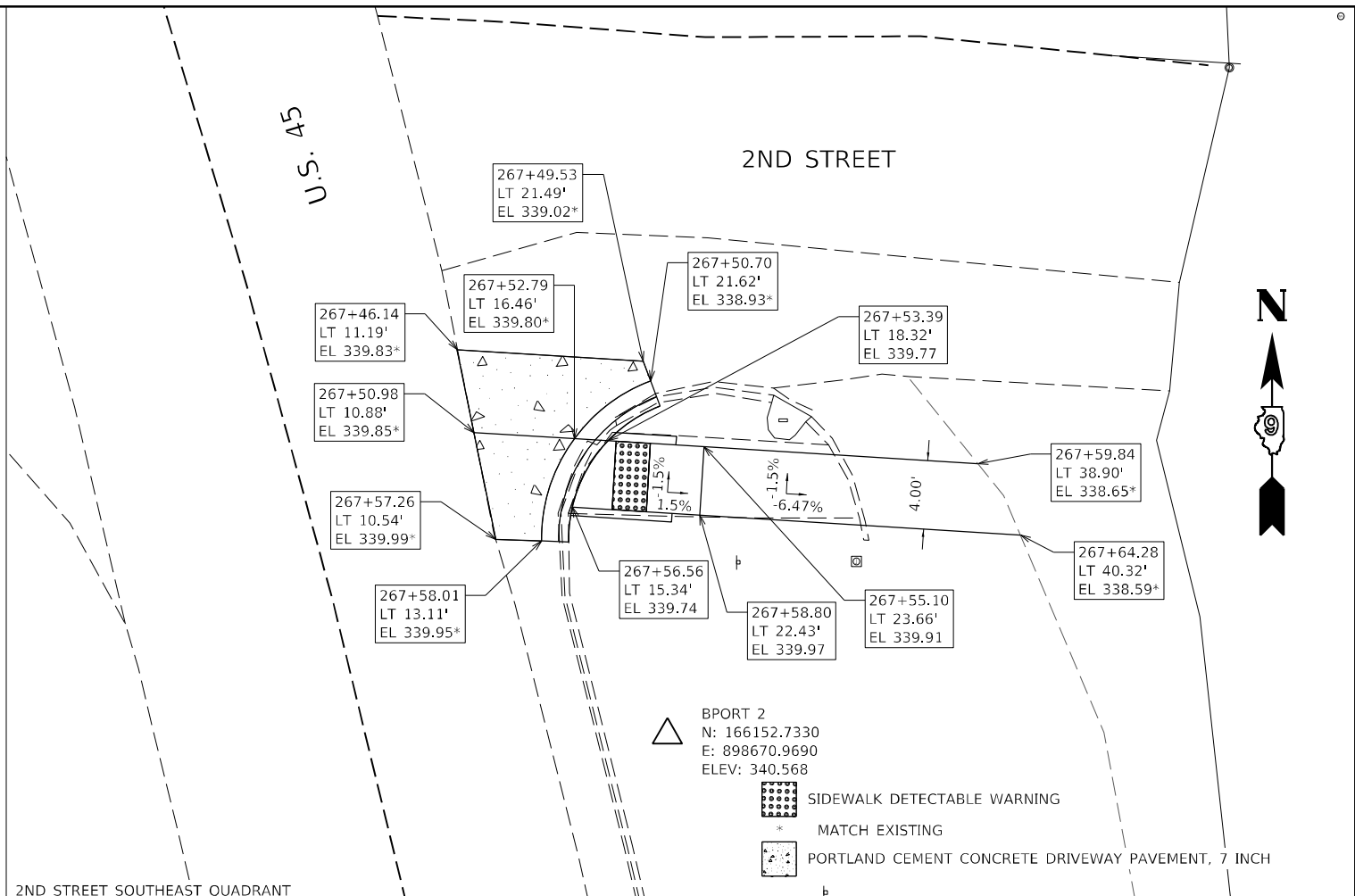
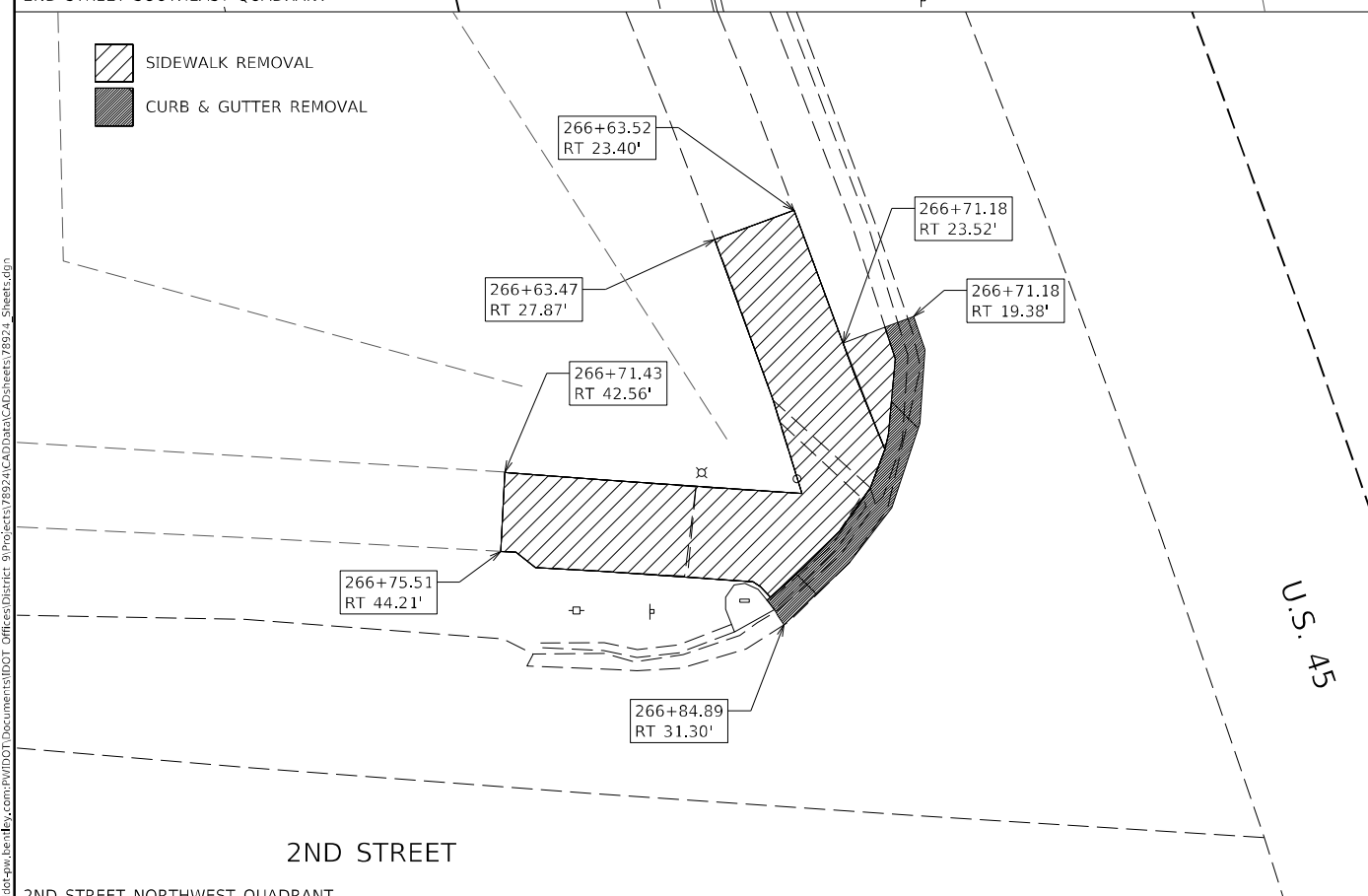
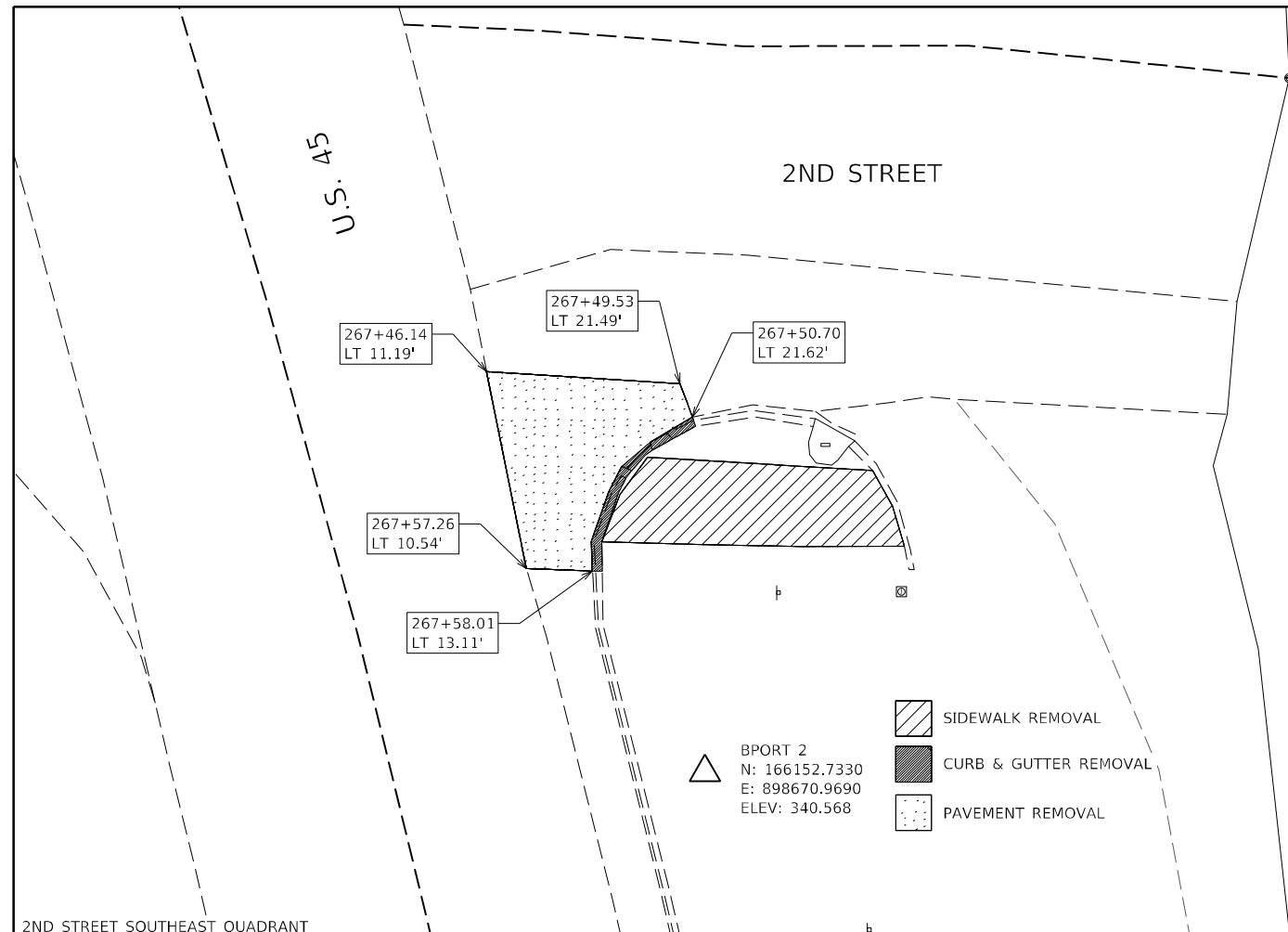
USER NAME = Jared.Haro	DESIGNED -	REVISED -
	DRAWN -	REVISED -
PLOT SCALE = 100,0000' / in.	CHECKED -	REVISED -
PLOT DATE = 6/2/2023	DATE -	REVISED -

**STATE OF ILLINOIS  
DEPARTMENT OF TRANSPORTATION**

**SIDEWALK SCHEDULE**

SCALE: SHEET OF SHEETS STA. TO STA.

F.A.S. RTE.	SECTION	COUNTY	TOTAL SHEETS	SHEET NO.
961	6R(RS-2)	MASSAC	29	22
CONTRACT NO. 78924			ILLINOIS FED. AID PROJECT	



MODEL: E: scale  
 FILE: \\mupic-prod-cad-beadefy.com\P\DOT\Documents\DOT Office\Dir\ref: @\Project\78924\CADD\Drawings\CAD\Sheets\78924\_Sheets.dgn

USER NAME = Jared.Haro	DESIGNED -	REVISED -
DRAWN -	REVISED -	
PLOT SCALE = 10,0000 * / in.	CHECKED -	REVISED -
PLOT DATE = 6/2/2023	DATE -	REVISED -

**STATE OF ILLINOIS  
DEPARTMENT OF TRANSPORTATION**

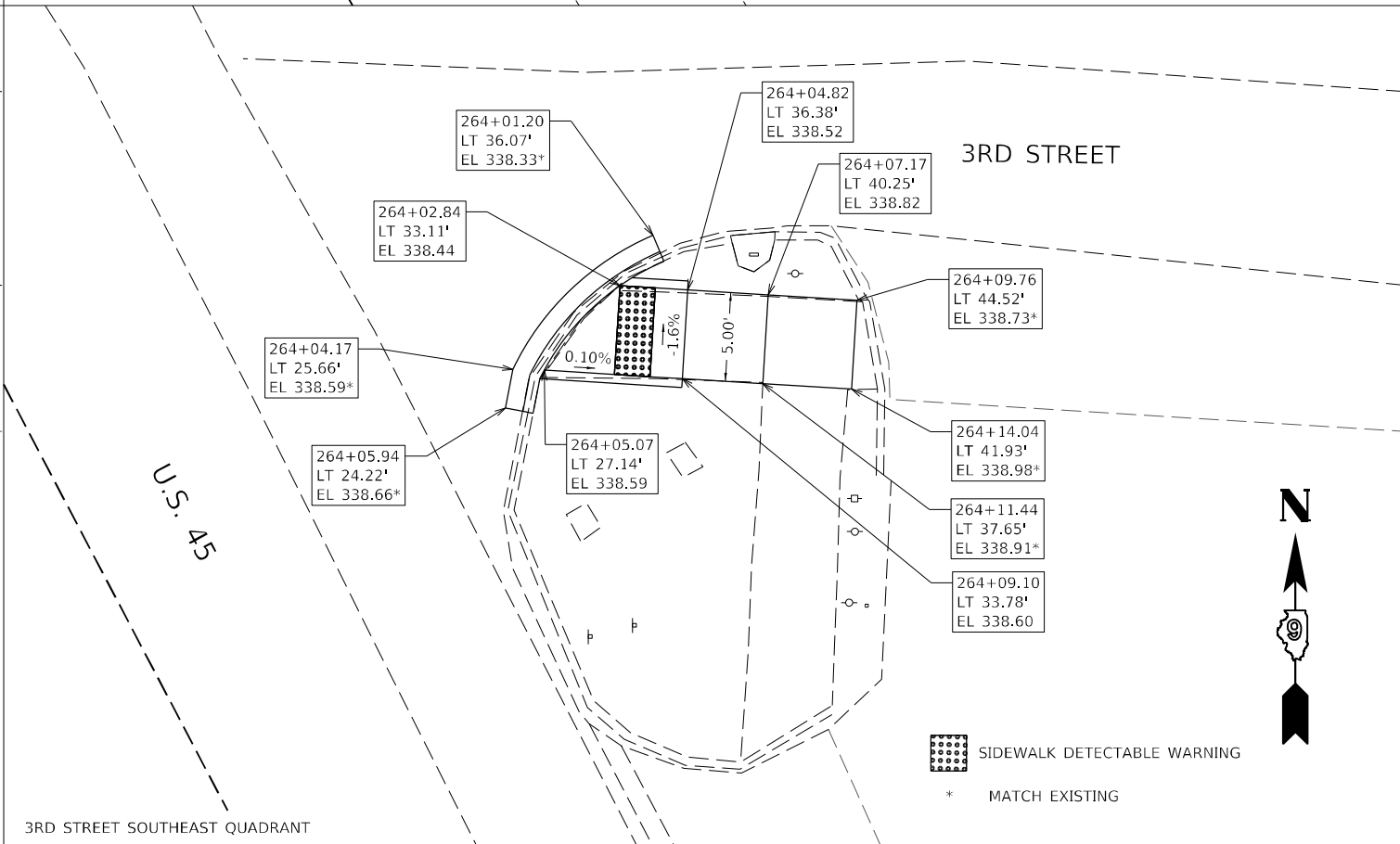
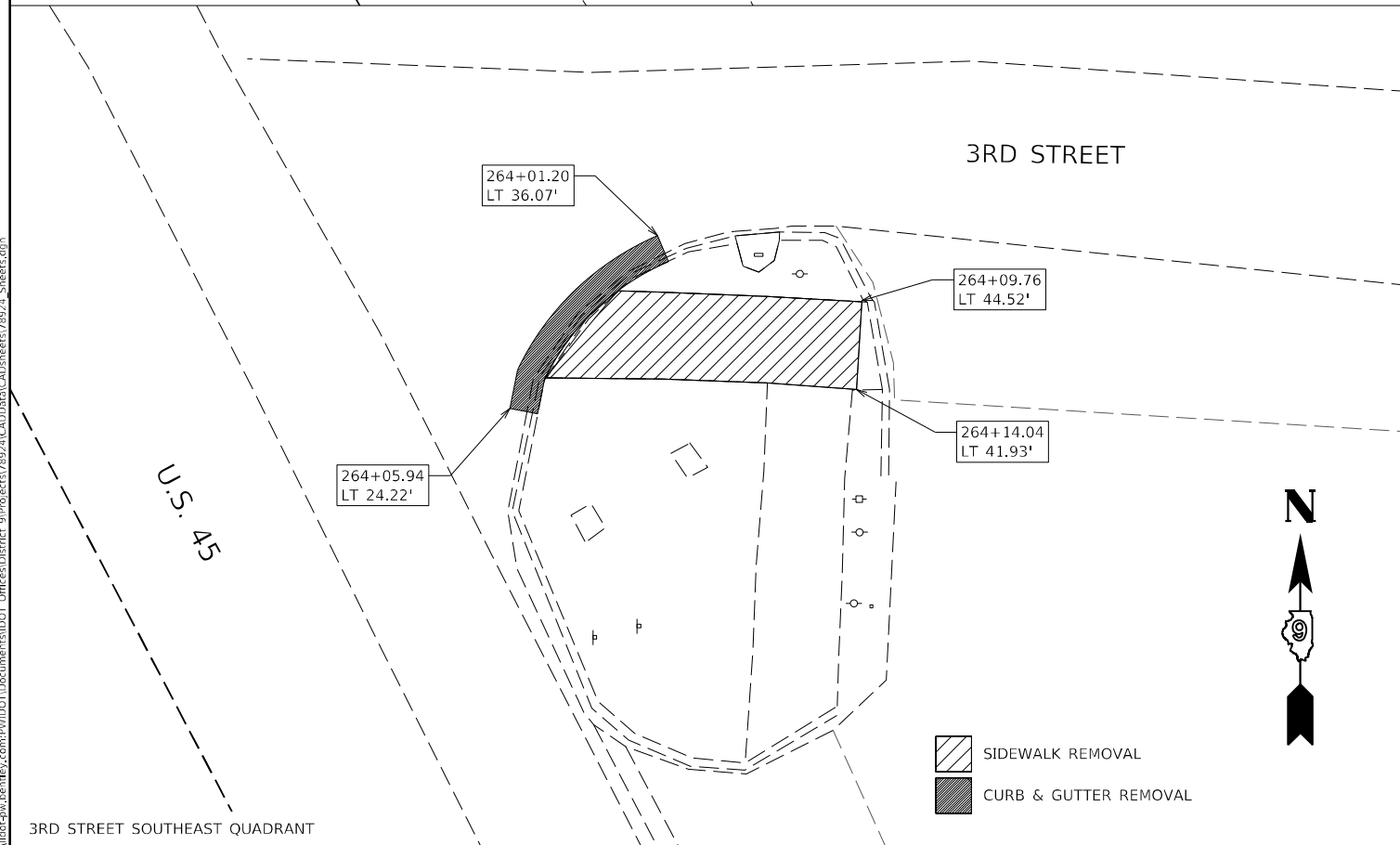
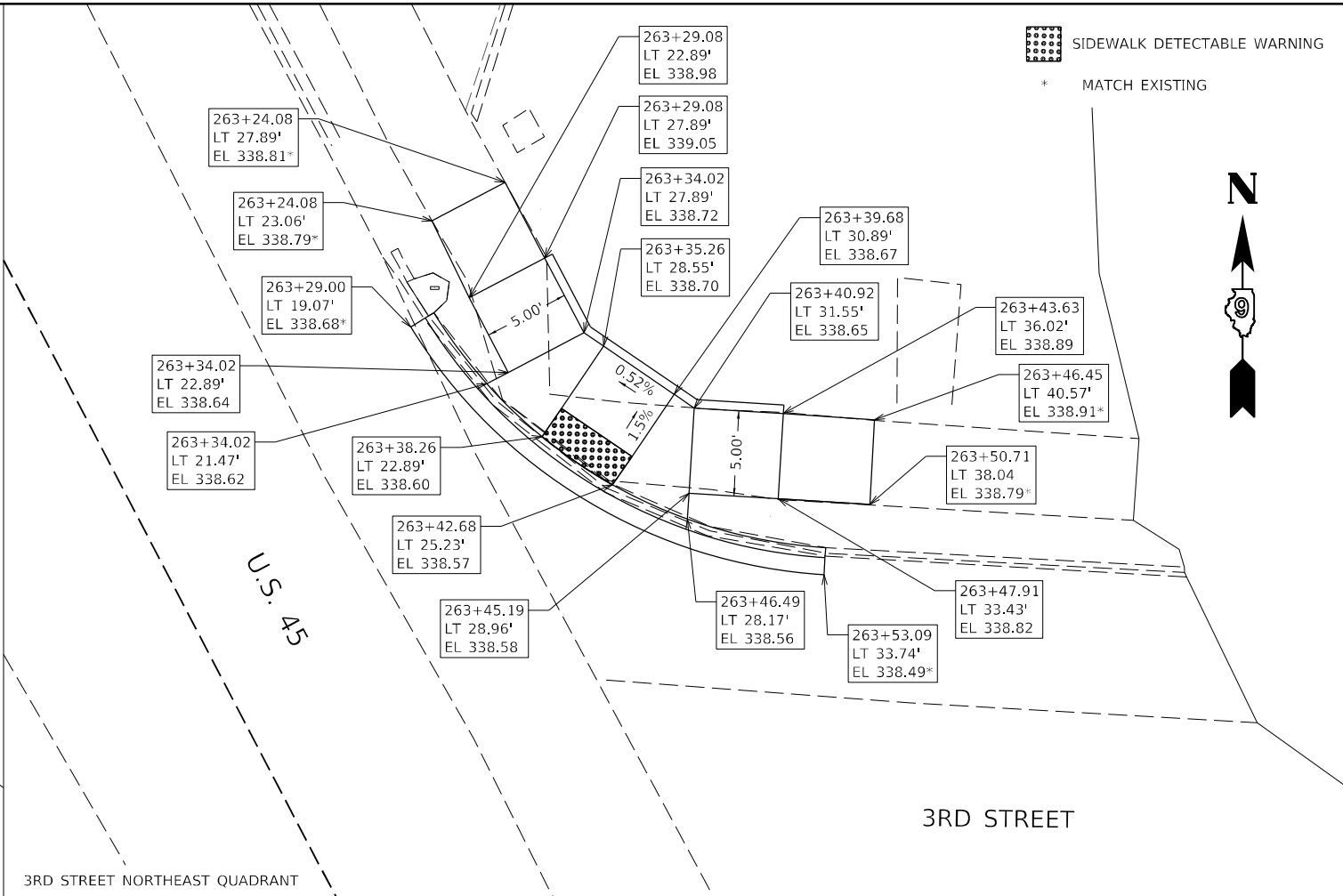
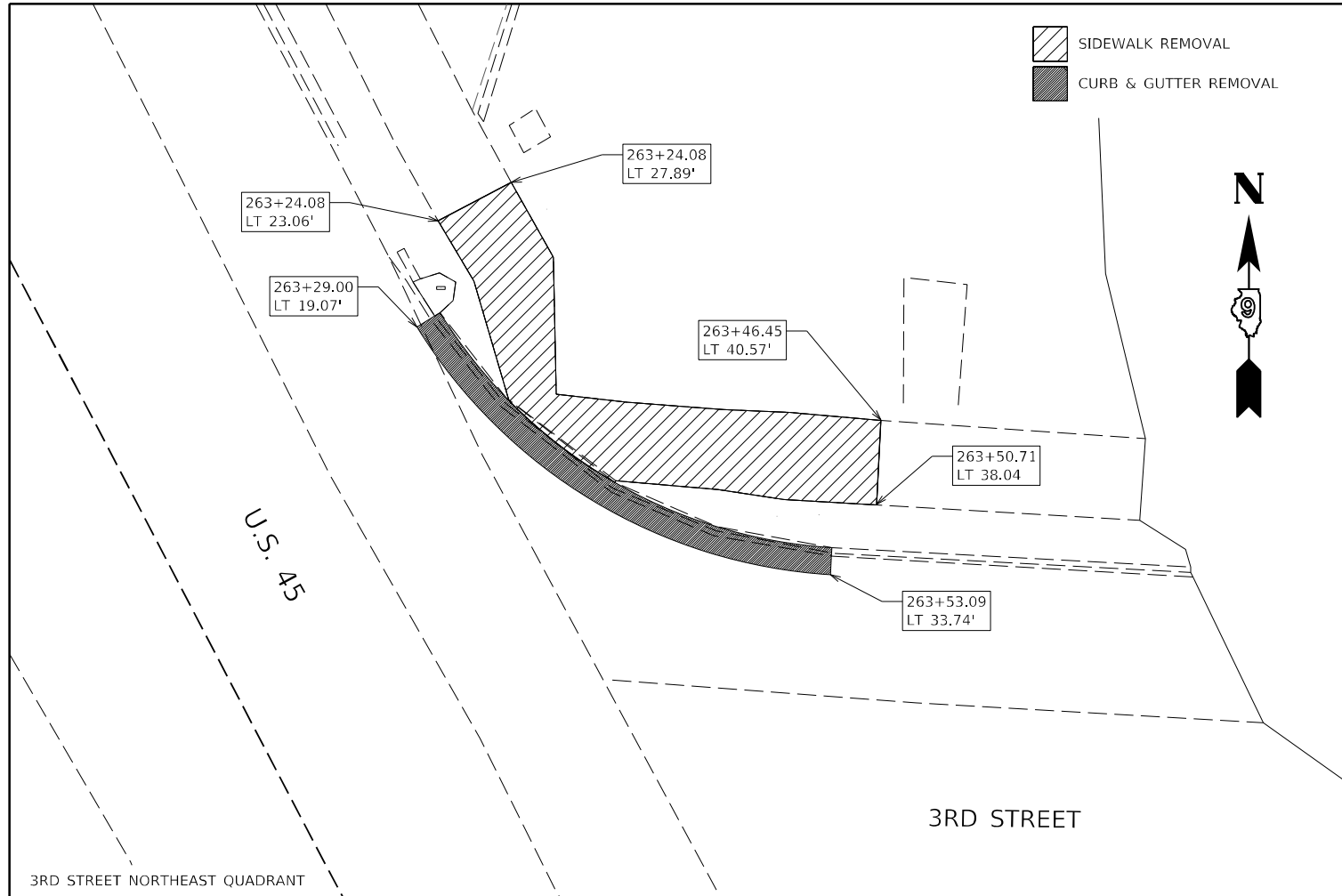
**ADA DETAILS**

SCALE: SHEET OF SHEETS STA. TO STA.

F.A.S. RTE.	SECTION	COUNTY	TOTAL SHEETS	SHEET NO.
961	6R(RS-2)	MASSAC	29	23
CONTRACT NO. 78924				
ILLINOIS FED. AID PROJECT				







MODEL E SCALE  
 FILE NAME: P:\projects\78924\CADD\Drawings\CAD\Drawings\78924\_Sheets.dwg  
 PROJECT: 78924\CADD\Drawings\CAD\Drawings\78924\_Sheets.dwg

USER NAME = Jared.Haro	DESIGNED -	REVISD -
	DRAWN -	REVISD -
PLOT SCALE = 10,0000 * / in.	CHECKED -	REVISD -
PLOT DATE = 6/2/2023	DATE -	REVISD -

**STATE OF ILLINOIS  
DEPARTMENT OF TRANSPORTATION**

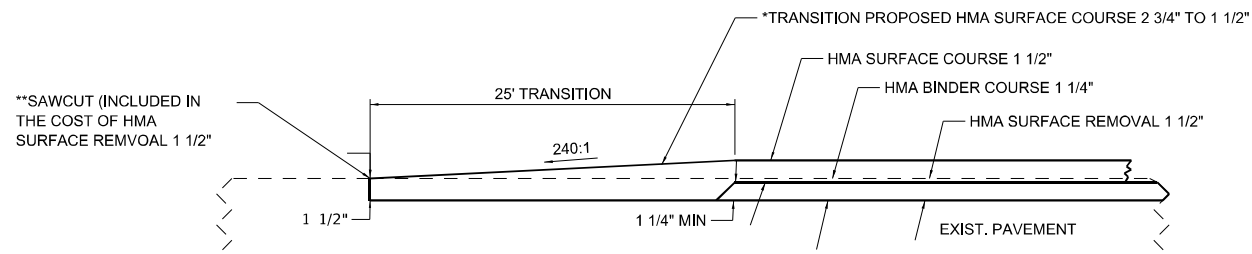
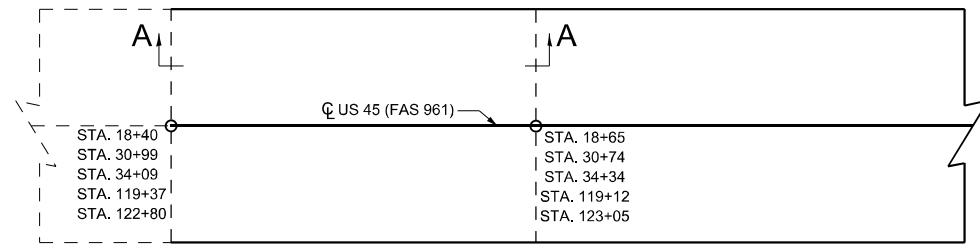
<b>ADA DETAILS</b>	
SCALE:	SHEET OF SHEETS STA. TO STA.

F.A.S. RTE. 961	SECTION 6R(RS-2)	COUNTY MASSAC	TOTAL SHEETS 29	SHEET NO. 25
CONTRACT NO. 78924				
ILLINOIS FED. AID PROJECT				



# MAINLINE RESURFACING TRANSITIONS

## RESURFACING TRANSITION



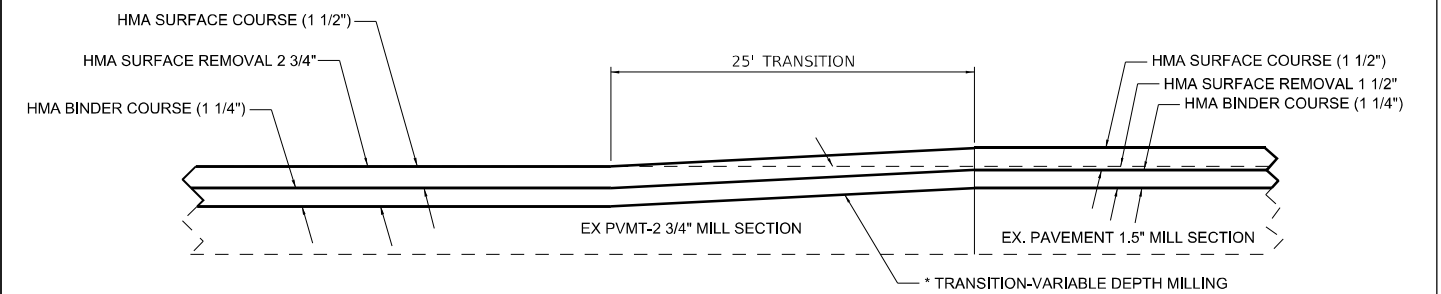
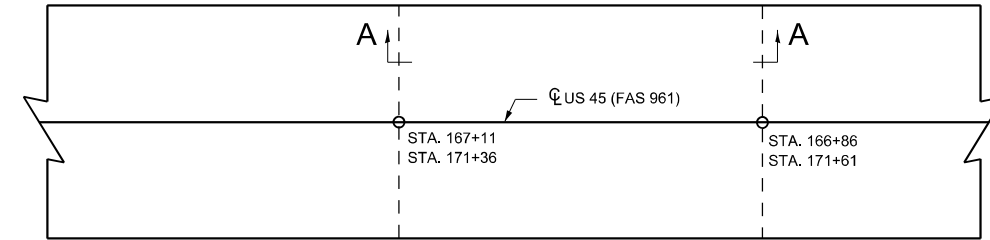
**SECTION A-A**

\*THE VARIABLE THICKNESS OF HMA SURFACE COURSE FROM 2 3/4" TO 1 1/2" WILL BE INCLUDED IN THE COST OF HMA SURFACE COURSE 1 1/2"  
 \*\*SAW CUT ONLY AT STATION 161+14

DRAWN	03-09-17
REVISED	02-18-20
REVISED	10-21-21
REVISED	05-26-22

STD. 9-14

## MILLING TRANSITION



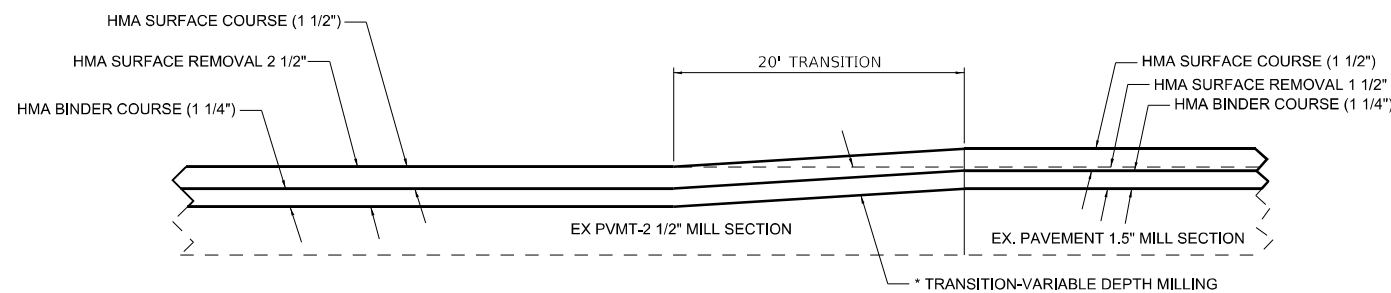
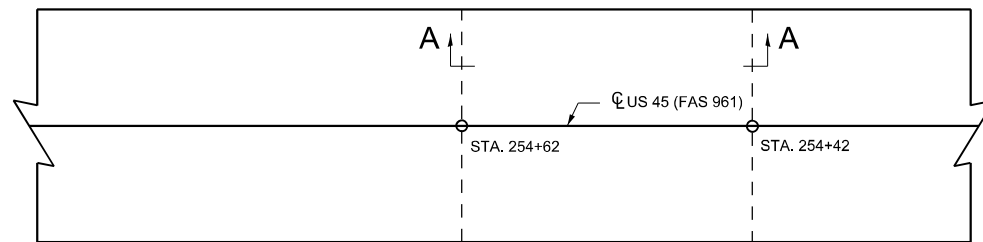
**SECTION A-A**

\* THE VARIABLE DEPTH MILLING WILL BE INCLUDED IN THE COST OF HMA SURFACE REMOVAL 1 1/2"

DRAWN	03-09-17
REVISED	02-18-20
REVISED	10-21-21
REVISED	05-26-22

STD. 9-14

## MILLING TRANSITION



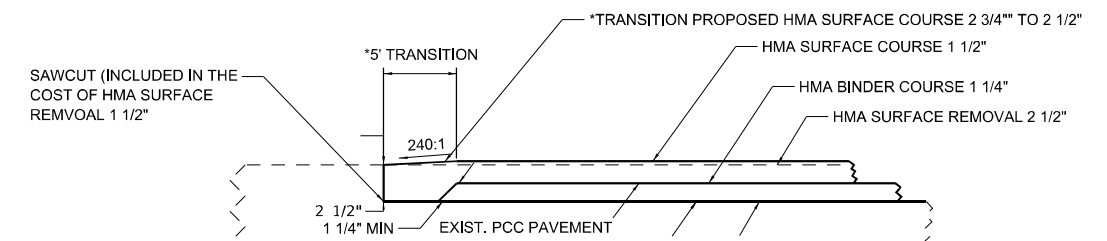
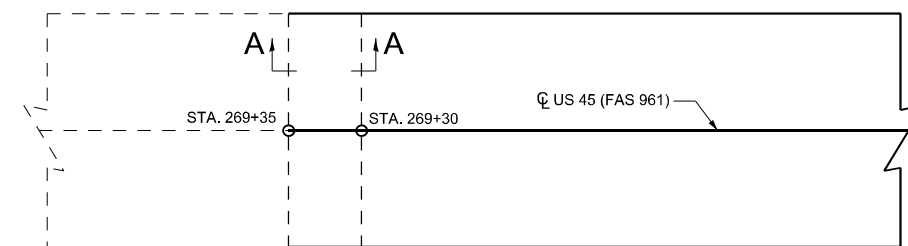
**SECTION A-A**

\* THE VARIABLE DEPTH MILLING WILL BE INCLUDED IN THE COST OF HMA SURFACE REMOVAL 1 1/2"

DRAWN	03-09-17
REVISED	02-18-20
REVISED	10-21-21
REVISED	05-26-22

STD. 9-14

## MAINLINE RESURFACING TRANSITION



**SECTION A-A**

\*THE VARIABLE THICKNESS OF HMA SURFACE COURSE FROM 2 3/4" TO 2 1/2" WILL BE INCLUDED IN THE COST OF HMA SURFACE COURSE 1 1/2"

DRAWN	03-09-17
REVISED	02-18-20
REVISED	10-21-21
REVISED	05-26-22

STD. 9-14

MODEL: Default  
 FILE: Mainline\_Resurfacing\_Transitions.dwg  
 PLOT DATE: 6/2/2023  
 PLOT SCALE: 100,0000' / in.  
 USER NAME: Jared\_Haro

DESIGNED	-	REVISED	-
DRAWN	-	REVISED	-
CHECKED	-	REVISED	-
DATE	-	REVISED	-

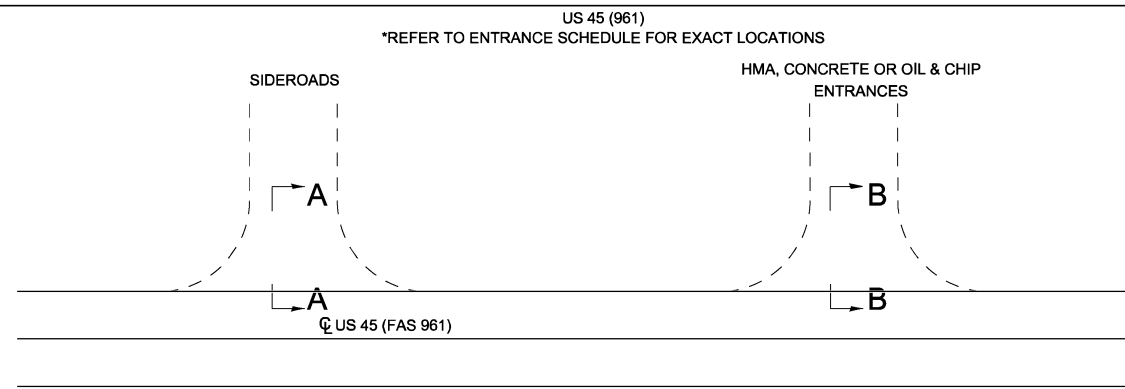
**STATE OF ILLINOIS  
DEPARTMENT OF TRANSPORTATION**

**HMA TRANSITIONS**

SCALE: SHEET OF SHEETS STA. TO STA.

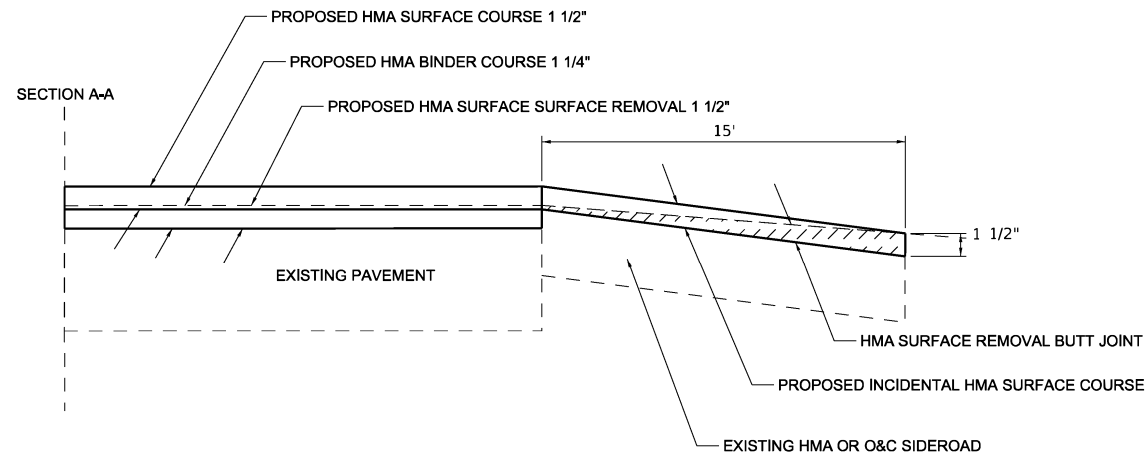
F.A.S. RTE.	SECTION	COUNTY	TOTAL SHEETS	SHEET NO.
961	6R(RS-2)	MASSAC	29	27
CONTRACT NO. 78924				
ILLINOIS FED. AID PROJECT				

# SIDEROAD AND ENTRANCE DETAILS

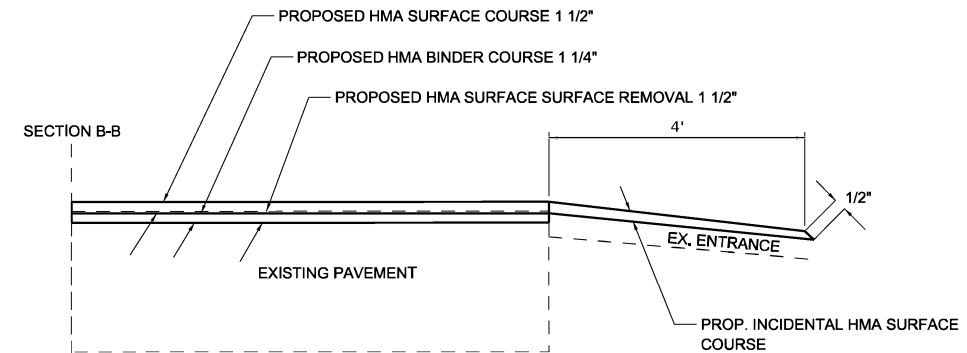


1. IF THE EXISTING SUBBASE IS INADEQUATE, AS DETERMINED BY THE ENGINEER, THE SIDE ROADS SHALL BE CORED OUT AND AGGREGATE SUBBASE, TYPE B SHALL BE PLACED FOR BASE. THE COST OF CORING OUT THE SIDEROAD AND ANY AGGREGATE BASE COURSE SHALL BE PAID FOR AS SPECIFIED IN ART. 109.04 OF THE STANDARD SPECIFICATIONS FOR ROAD AND BRIDGE CONSTRUCTION. IF EXISTING SUBBASE IS DETERMINED TO BE ADEQUATE, THE PREPARATION OF THE BASE SHALL BE CONSTRUCTED ACCORDING TO ARTICLE 406.09.
2. VARIABLE SHAPING IS INCLUDED IN THE COST OF INCIDENTAL HOT-MIX ASPHALT SURFACE.

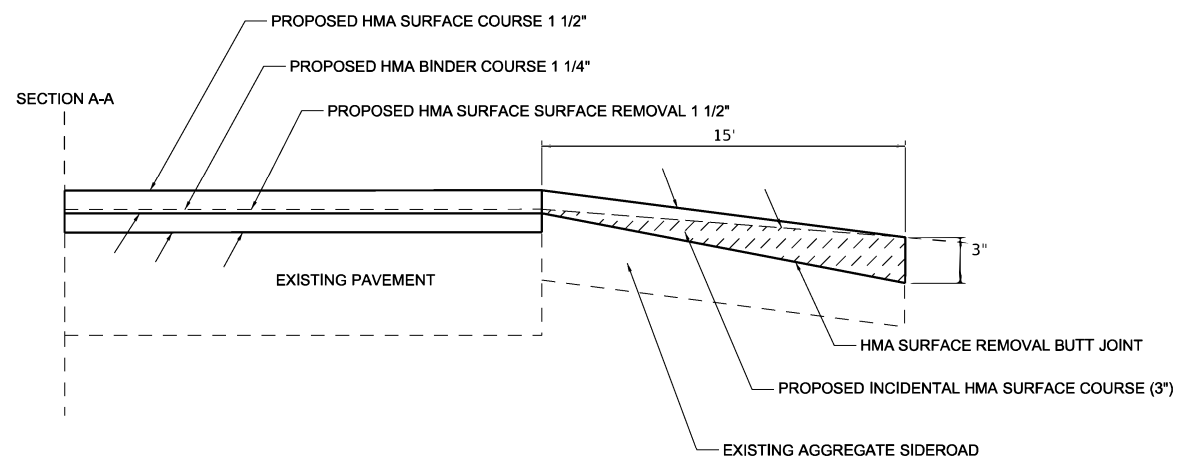
## EX. HMA OR OIL & CHIP SIDEROADS WITH BUTT JOINT



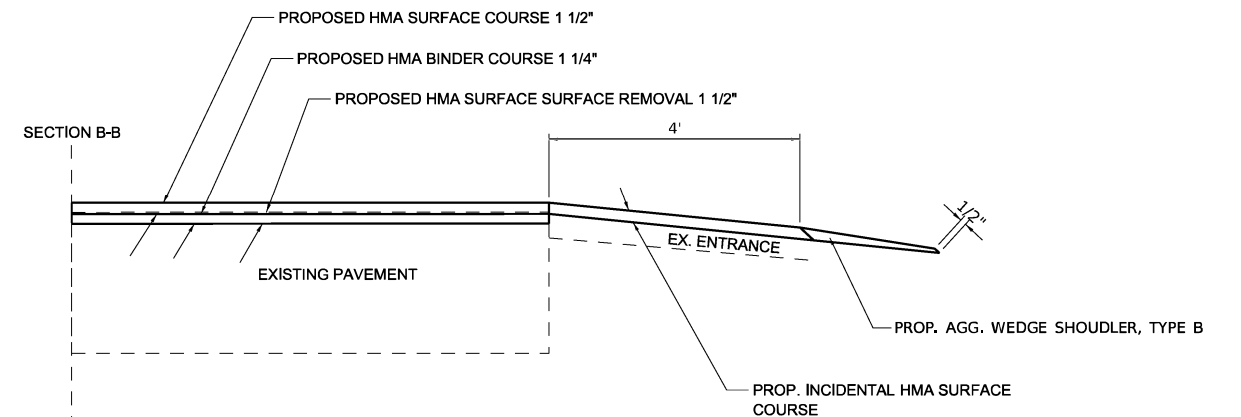
## EX. HMA, OIL & CHIP, OR CONCRETE ENTRANCES



## EX. AGGREGATE SIDEROADS



## EX. AGGREGATE ENTRANCES



MODEL: Default  
 FILE: Main: P:\Project-2023\78924\CADD\Drawings\CAD\Drawings\78924\_Sheets.dgn  
 PROJECT: 78924\CADD\Drawings\CAD\Drawings\78924\_Sheets.dgn

USER NAME = Jared.Harp	DESIGNED -	REVISED -
PLOT SCALE = 100.0000' / in.	DRAWN -	REVISED -
PLOT DATE = 6/2/2023	CHECKED -	REVISED -
	DATE -	REVISED -

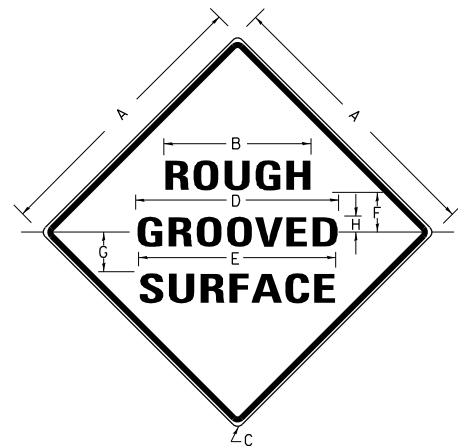
**STATE OF ILLINOIS**  
**DEPARTMENT OF TRANSPORTATION**

**SIDEROAD AND ENTRANCE DETAILS**

SCALE: SHEET OF SHEETS STA. TO STA.

F.A.S. RTE.	SECTION	COUNTY	TOTAL SHEETS	SHEET NO.
961	6R(R5-2)	MASSAC	29	28
CONTRACT NO. 78924				
ILLINOIS FED. AID PROJECT				

**ILLINOIS STANDARD**



**COLORS:**

LEGEND AND BORDER- BLACK NON-REFLECTORIZED  
BACKGROUND- ORANGE REFLECTORIZED

SIGN SIZE	DIMENSIONS							
	A	B	C	D	E	F	G	H
48X48	48.0	24.1	3.0	34.0	33.0	6.0	13.0	3.5

SIGN SIZE	SERIES LINES			MAR-GIN	BOR-DER	BLANK STD.
	1	2	3			
48X48	7C	7C	7C	0.8	1.2	B4-48D

ALL DIMENSIONS IN INCHES

**NOTES:**

PRIOR TO ALLOWING TRAFFIC ON ANY PORTION OF THE ROADWAY THAT HAS BEEN COLDMILLED, THE CONTRACTOR SHALL HAVE ERECTED "ROUGH GROOVED SURFACE" SIGNS THAT CONFORM TO THE ABOVE DETAILS. A MINIMUM OF ONE SIGN AT EACH END OF THE IMPROVEMENT WILL BE REQUIRED. THE CONTRACTOR SHALL MAINTAIN THE "ROUGH GROOVED SURFACE" SIGNS UNTIL THE COLDMILLED SURFACE IS COVERED WITH LEVELING BINDER OR SURFACE COURSE.

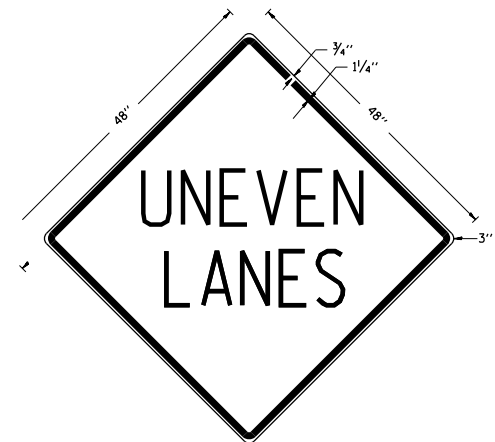
IF AT ANY TIME THE SIGNS ARE IN PLACE BUT NOT APPLICABLE, THEY SHALL BE TURNED FROM THE VIEW OF MOTORISTS OR COVERED AS DIRECTED BY THE ENGINEER.

THE COST OF FURNISHING, ERECTING, MAINTAINING, AND REMOVING THE REQUIRED SIGNS SHALL BE INCLUDED IN THE CONTRACT.

STD. 9-39

**UNEVEN LANES SIGN**

W8-11 (48" x 48")



**COLORS:**

LEGEND AND BORDER - BLACK NON-REFLECTORIZED  
BACKGROUND - ORANGE REFLECTORIZED

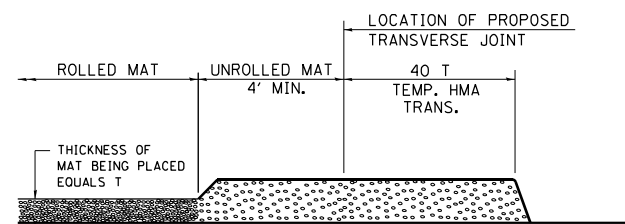
**NOTE:** PRIOR TO ALLOWING TRAFFIC ON ANY PORTION OF THE ROADWAY THAT HAS BEEN COLDMILLED OR BEFORE RESURFACING OPERATIONS BEGIN, THE CONTRACTOR SHALL HAVE ERECTED "UNEVEN PAVEMENT" SIGNS THAT CONFORM TO THE ABOVE DETAILS. A MINIMUM OF ONE SIGN AT EACH END OF THE IMPROVEMENT WILL BE REQUIRED. THE CONTRACTOR SHALL MAINTAIN THE "UNEVEN PAVEMENT" SIGNS UNTIL THE RESURFACING OPERATIONS ARE COMPLETED.

IF AT ANY TIME THE SIGNS ARE IN PLACE BUT NOT APPLICABLE, THEY SHALL BE TURNED FROM THE VIEW OF MOTORISTS OR COVERED AS DIRECTED BY THE ENGINEER.

THE COST OF FURNISHING, ERECTING, MAINTAINING, AND REMOVING THE REQUIRED SIGNS SHALL BE INCLUDED IN THE CONTRACT.

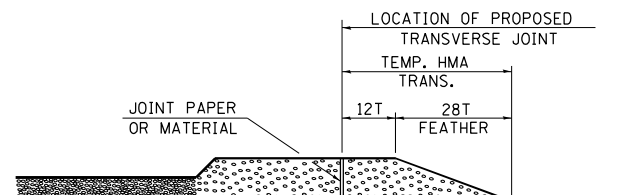
STD. 9-41

**TEMPORARY HOT-MIX ASPHALT TRANSITIONS**



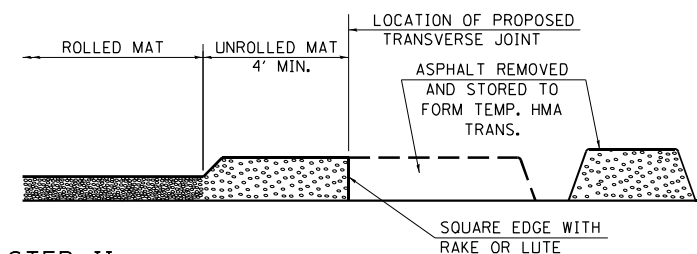
**STEP I**

1. PLACE HOT-MIX ASPHALT MAT, LENGTH 40 TIMES THE THICKNESS OF THE MAT BEING PLACED PAST THE PROPOSED TRANSVERSE JOINT LOCATION USING NORMAL OPERATING PROCEDURES.
2. EXTREME CARE SHOULD BE TAKEN TO MAINTAIN ENOUGH MATERIAL IN FRONT OF THE SCREED TO MAINTAIN REQUIRED PAVING DEPTH.



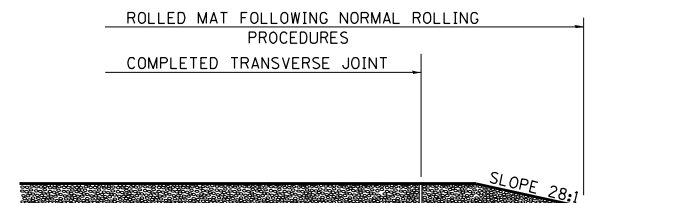
**STEP III**

1. JOINT PAPER OR OTHER PRESELECTED JOINT MATERIAL IS THEN PLACED IN THE CLEARED AREA AND THE EXCESS ASPHALT USED TO HAND FORM A TRANSITION TO THE DIMENSIONS SHOWN ABOVE.
2. NOTE THAT IN CONSTRUCTING THE TRANSITION, THE MAT DEPTH IS CONTINUED AS PART OF THE TRANSITION BEFORE FORMING THE FEATHER.



**STEP II**

1. MOVE THE PAVER OUT OF THE WAY AND REMOVE THE ASPHALT FROM THE AREA OF THE PROPOSED TEMPORARY HOT-MIX ASPHALT TRANSITION.
2. SQUARE UP THE END OF THE MAT WITH A RAKE OR LUTE.
3. NOTE THAT THE MAT WITHIN 4' OF THE END OF JOINT IS NOT TO BE ROLLED AT THIS TIME.



**STEP IV**

1. COMPLETE TEMPORARY TRANSITION BY ROLLING.
2. TO RESUME PAVING, AT THE JOINT, REMOVE TEMPORARY TRANSITION AND DISPOSE OF THE MATERIAL ACCORDING TO ART. 202.03 OF THE STD. SPECS. (COST INCLUDED IN THE CONTRACT).
3. CONSTRUCTING THE TEMPORARY TRANSITIONS WILL NOT BE PAID FOR SEPARATELY IN ACCORDANCE WITH ARTICLE 406.14 OF THE STANDARD SPECIFICATIONS.

STD. 9-26

MODEL: Default  
FILE NAME: p:\std\std-pw-benefy.com\PI\DOT\Documents\DOT Office\District: 8\Project\78924\CADD\Drawings\Drawings\78924\_Sheets.dgn

USER NAME = Jared.Haro	DESIGNED -	REVISED -
PLOT SCALE = 100,0000' / in.	DRAWN -	REVISED -
PLOT DATE = 6/2/2023	CHECKED -	REVISED -
	DATE -	REVISED -

**STATE OF ILLINOIS  
DEPARTMENT OF TRANSPORTATION**

**UNEVEN LANE, ROUGH GROOVED SURFACE, AND TEMP TRANSITIONS**

SCALE: SHEET OF SHEETS STA. TO STA.

F.A.S. RTE.	SECTION	COUNTY	TOTAL SHEETS	SHEET NO.
961	6R(RS-2)	MASSAC	29	29
CONTRACT NO. 78924				
ILLINOIS FED. AID PROJECT				