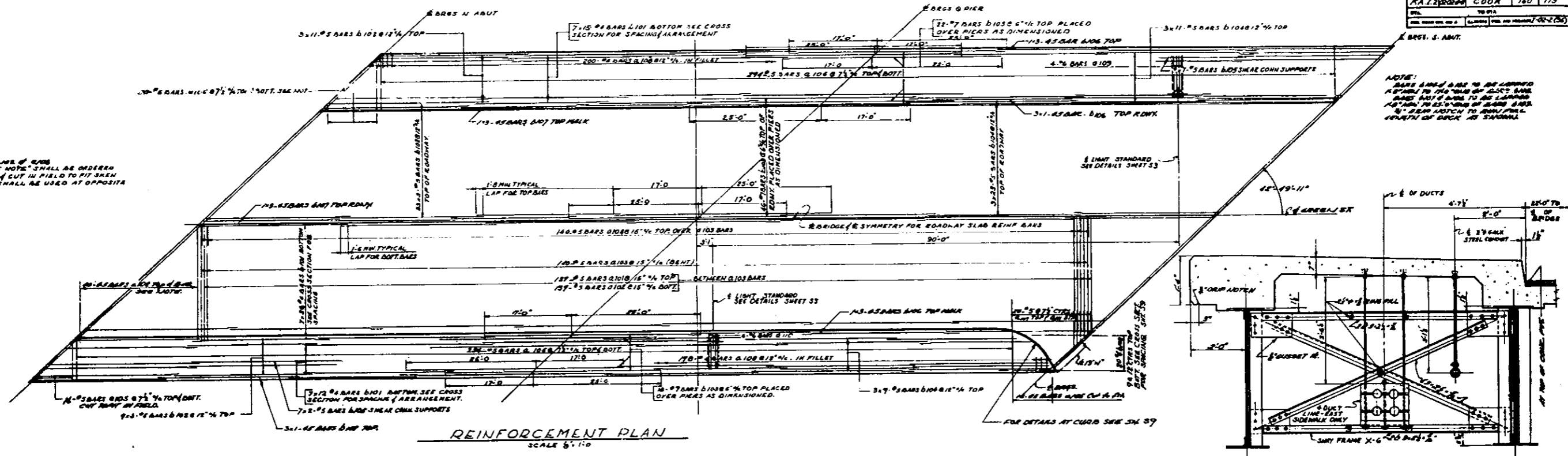


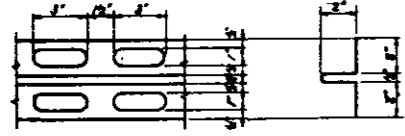
NO.	REV.	QUANTITY	TOTAL	DATE
1	1	140	140	1/13

NOTE:
BARS MARKED WITH "S" SHALL BE ORDERED FULL LENGTH & CUT IN FIELD TO FIT. REMAINDER SHALL BE USED AT OPPOSITE END.

NOTE:
BARS MARKED WITH "S" SHALL BE ORDERED FULL LENGTH & CUT IN FIELD TO FIT. REMAINDER SHALL BE USED AT OPPOSITE END.

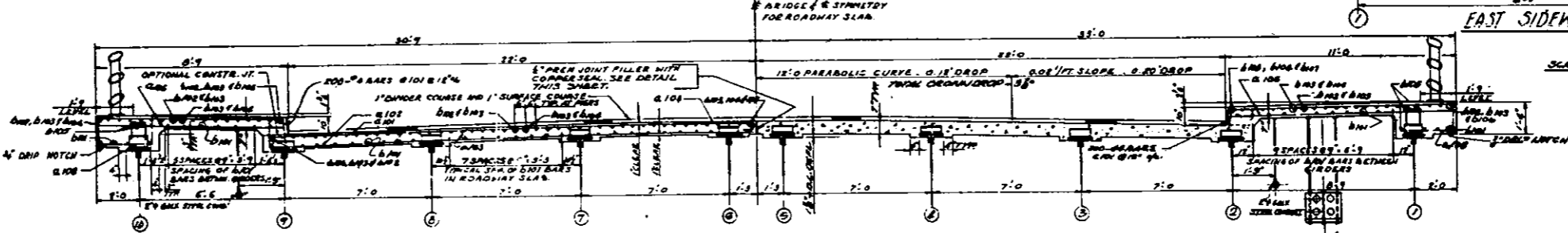


REINFORCEMENT PLAN
SCALE 5/16



COPPER SEAL DETAIL

NOTE:
COPPER SEAL SHALL BE PERFORATED AND SHALL BE 18 GZ. COLD ROLLED ANNEALED COPPER. SPICES SHALL BE SOLDERED OR BRAZED. THE COST OF PERFORATING AND INSTALLING COPPER SEAL SHALL BE INCLUDED IN THE UNIT PRICE B/B FOR CLASS "C" CONCRETE.



CROSS SECTION LOOKING NORTH
SCALE 5/16

EAST SIDEWALK LOOKING SOUTH
SCALE 5/16

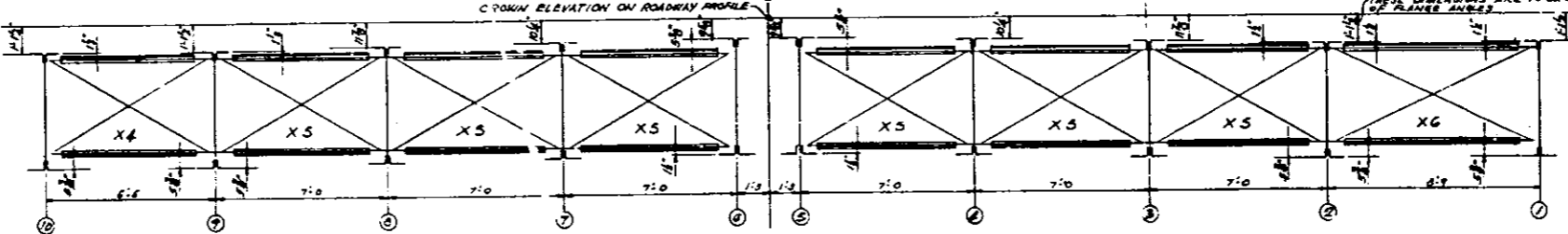
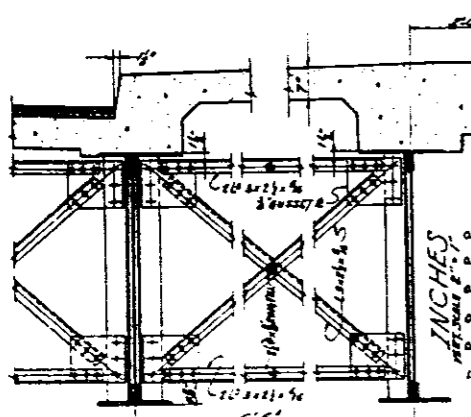
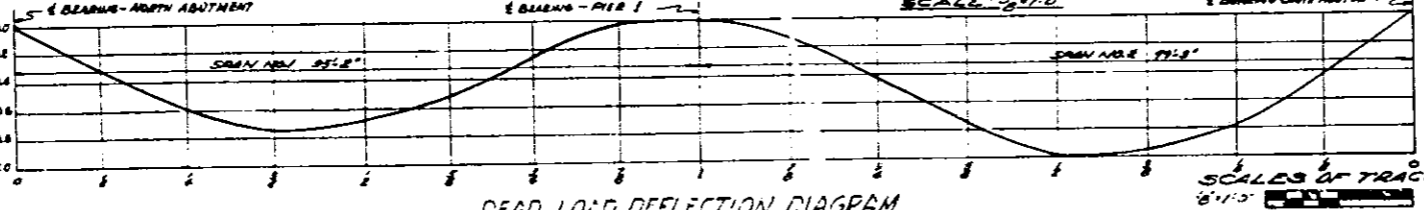


DIAGRAM OF SWAY FRAMES X4, X5 & X6
SCALE 3/16



SWAY FRAME X4

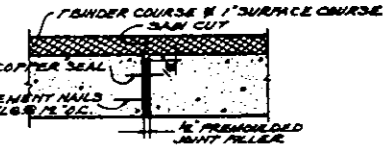
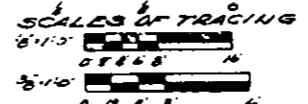
WEST SIDEWALK LOOKING SOUTH



DEAD LOAD DEFLECTION DIAGRAM
SCALE 1/16

NOTE:
DEAD LOAD DEFLECTIONS ARE SHOWN ON GRAPH FOR GIRDERS 3, 4, 5 & 6. FOR OTHER GIRDERS OBTAIN DEFLECTION BY MULTIPLYING VALUE FROM GRAPH BY THE FOLLOWING:
FOR GIRDERS 1 & 2: 1.1
FOR GIRDERS 3 & 6: 1.0
FOR GIRDERS 4 & 5: 0.9

NOTES:
ABOVE DIMENSIONS ARE FROM BK OF FL 12 TO THE BK OF SWAY FRAME 12. SEE SWAY ST FOR DETAIL OF SWAY FRAMES X5.
FOR DETAILS OF LAMP STANDARDS & DUCT CONDUIT HANGER SEE SHEET 53.
STEEL CONDUIT HANGER SW SHEET 53

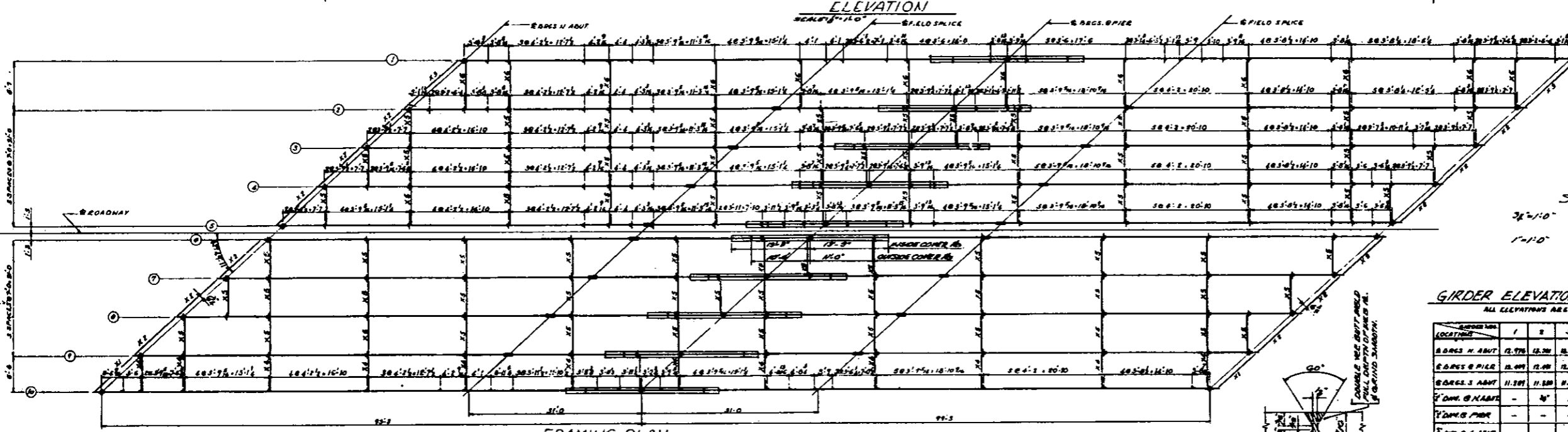
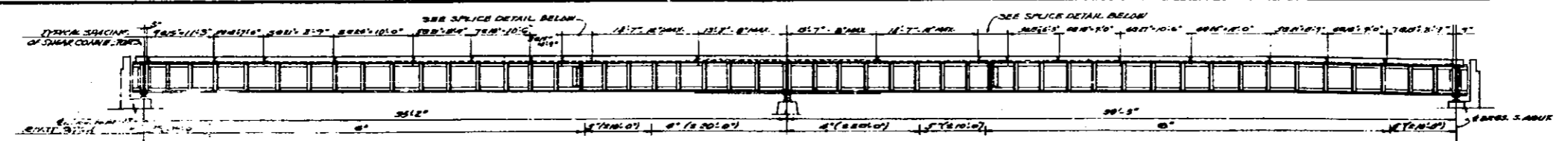


DETAIL OF JOINT AT E OF BRIDGE

ITEM	DESCRIPTION	UNIT	QUANTITY
20	CLASS X CONCR	CU YD	847.5
31	REINF. BARS	LB	7245.4

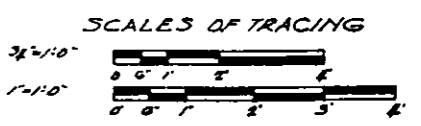
KENNEDY
016-0136
GREEN ST. / KENNEDY

CITY OF CHICAGO
DEPARTMENT OF PUBLIC WORKS
BUREAU OF ENGINEERING
NORTHWEST ROUTE SUPERHIGHWAY
C. & N.W. RY. GRADE SEPARATION
W. KINZIE ST. TO W. HUBBARD ST.
SECTION 08084-2
GREEN ST. BRIDGE
DECK REINFORCEMENT PLAN
ALFRED BENECH & ASSOCIATES CONSULTING ENGINEERS
111 W. JACKSON BLVD. CHICAGO, ILLINOIS
SHEET NO. 150 OF 160 SHEETS DATE: JAN 9, 1957



ALL GIRDER DATA (ALL GIRDERS)

5" x 12" x 25" PLANS
TOP PLANGE 1/2" x 1/2" x 1/2"
SOFT PLANGE 1/2" x 1/2" x 1/2"
TOP PLANGE 1/2" x 1/2" x 1/2"
COVER PL. 1/2" x 1/2" x 1/2"
COVER PL. 1/2" x 1/2" x 1/2"
COVER PL. 1/2" x 1/2" x 1/2"



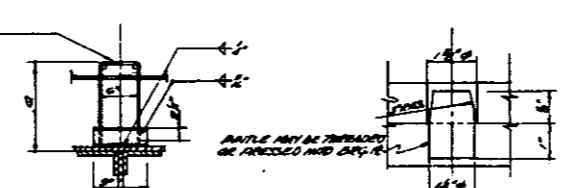
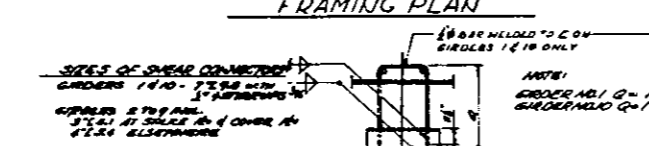
GIRDER ELEVATIONS & SHIM & DIMENSIONS

ALL ELEVATIONS ARE GIVEN TO THE BACK OF TOP PLANGE.

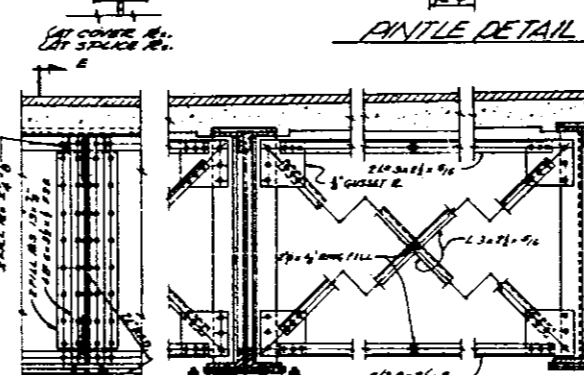
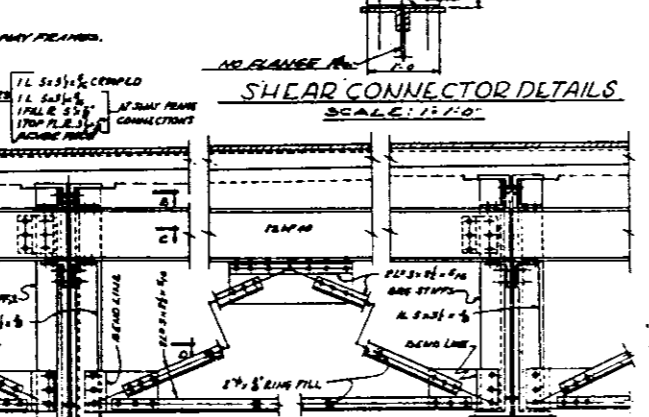
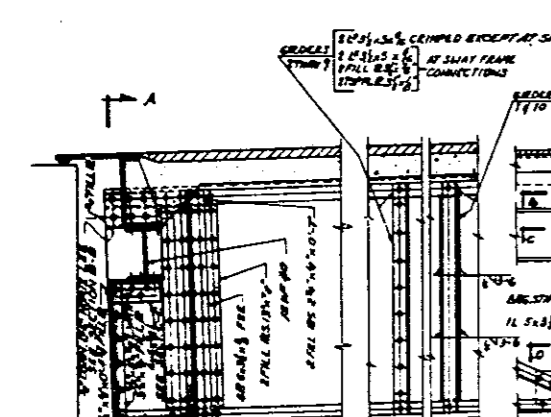
LOCATION	1	2	3	4	5	6	7	8	9	10
EDGE 1 ADUT	12.770	12.770	12.770	12.770	12.770	12.770	12.770	12.770	12.770	12.770
EDGE 2 ADUT	12.491	12.491	12.491	12.491	12.491	12.491	12.491	12.491	12.491	12.491
EDGE 3 ADUT	11.291	11.291	11.291	11.291	11.291	11.291	11.291	11.291	11.291	11.291
1" DIM. @ ADUT	-	-	-	-	-	-	-	-	-	-
1" DIM. @ MID	-	-	-	-	-	-	-	-	-	-
1" DIM. @ S. ADUT	-	-	-	-	-	-	-	-	-	-

GIRDERS SHALL BE FABRICATED TO FOLLOW CURVATURE OF VERTICAL CURVE OF ROADWAY. DEAD LOAD DEFLECTION OF GIRDERS SHALL BE TAKEN UP WITH CONCRETE FILLETS.

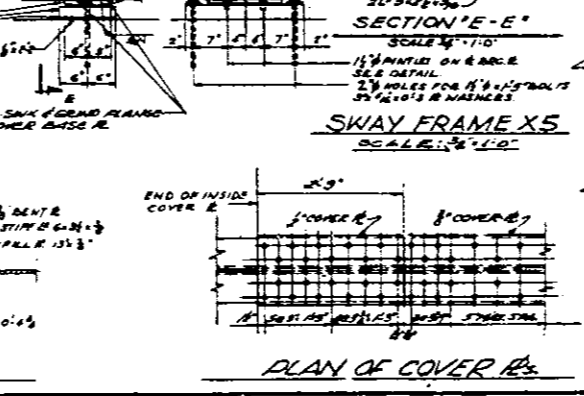
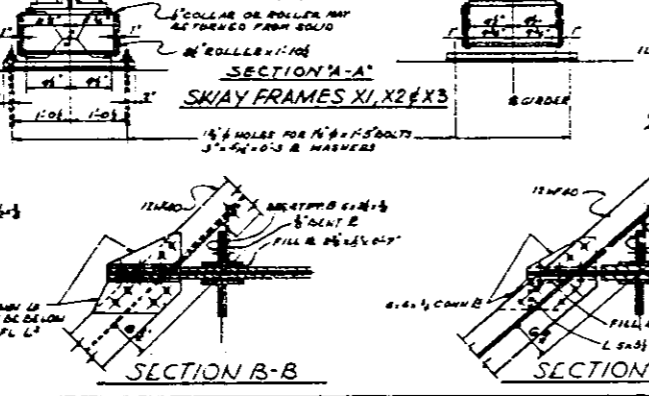
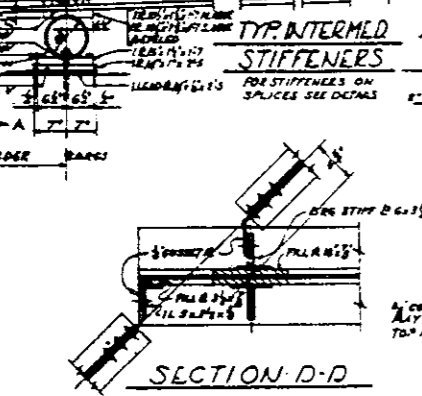
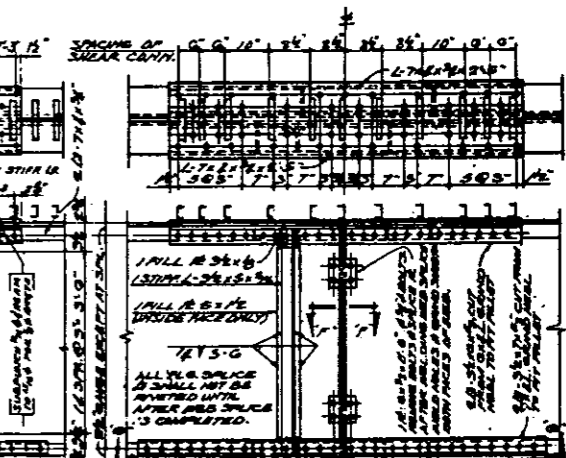
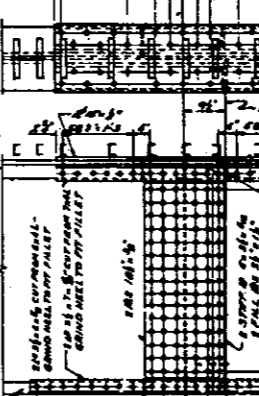
NOTE:
THE SPACING OF STIFFENERS FOR GIRDERS 6, 7, 8 (12 IDENTICAL TO 2, 3, 4, 5 RESPECTIVELY)



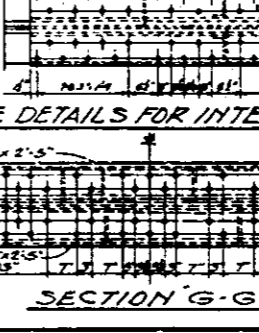
SECTION F-F



SECTION E-E

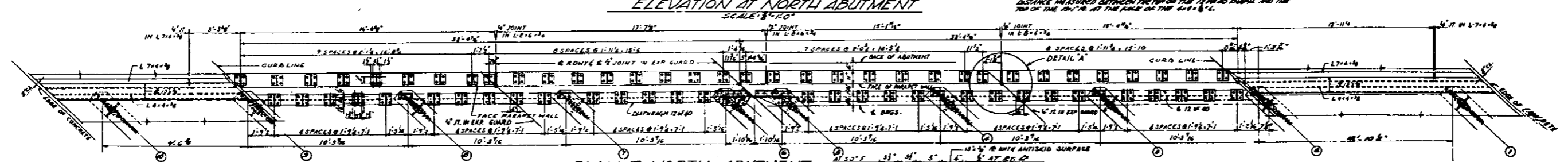
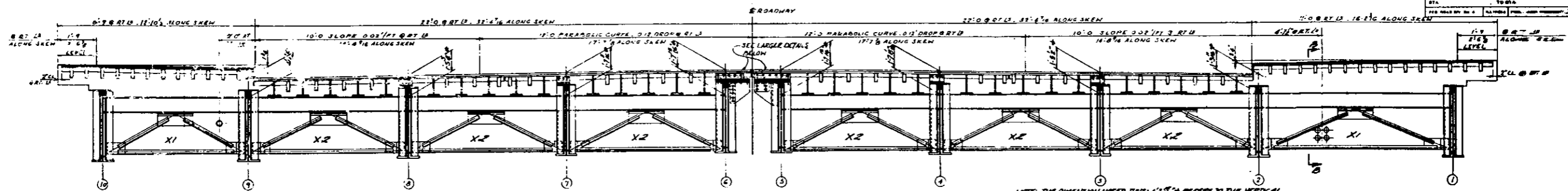


SECTION G-G

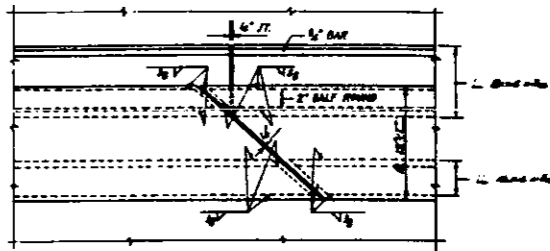
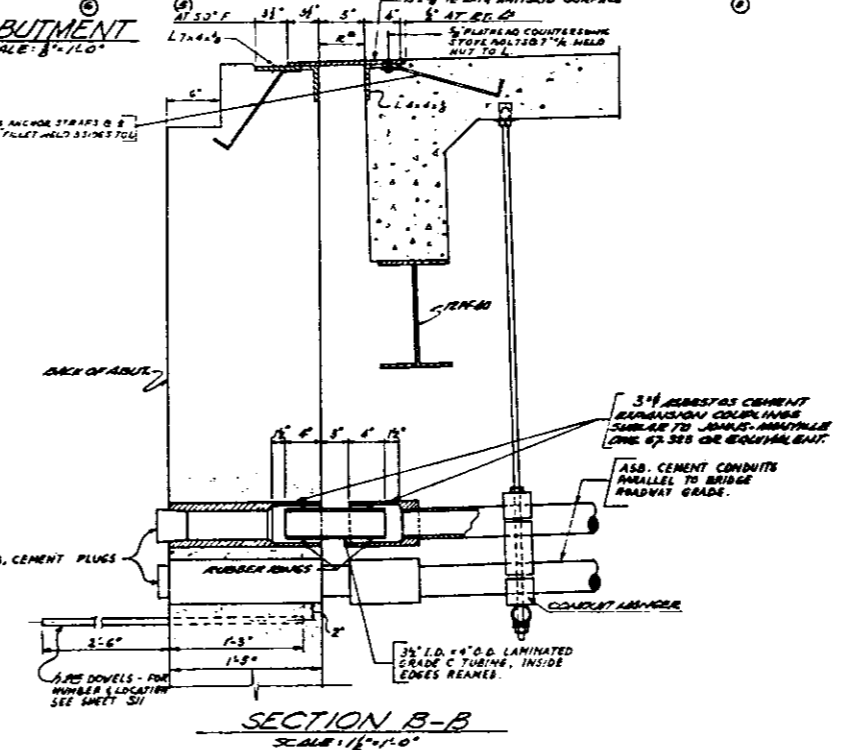
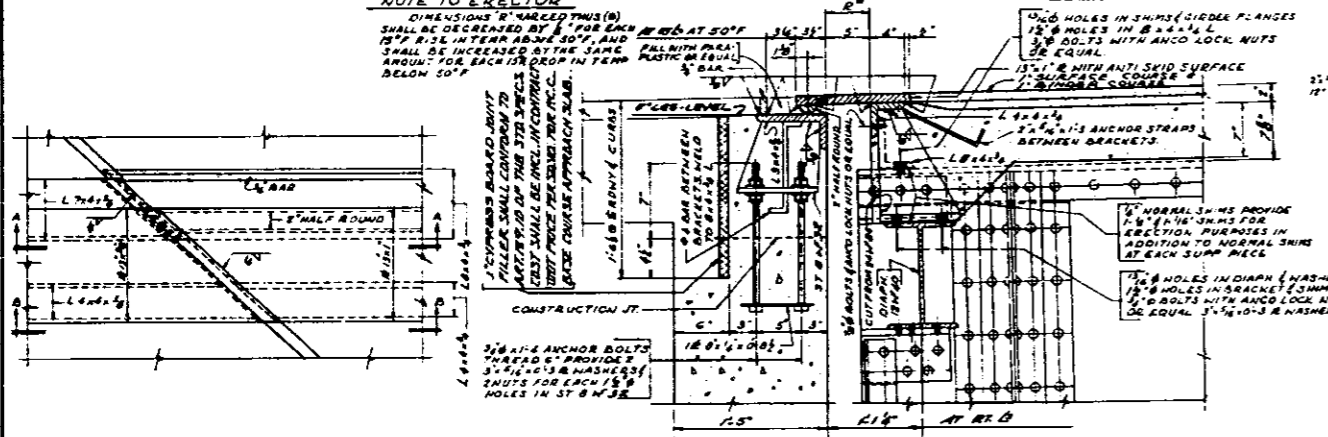


PLAN OF COVER PL.

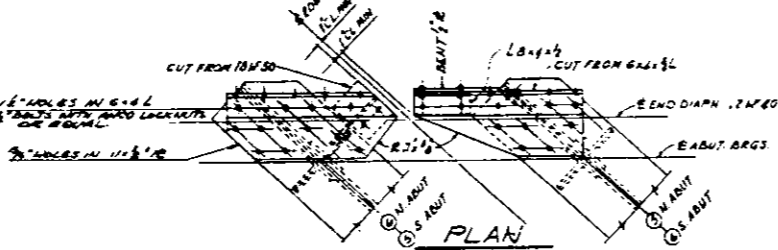
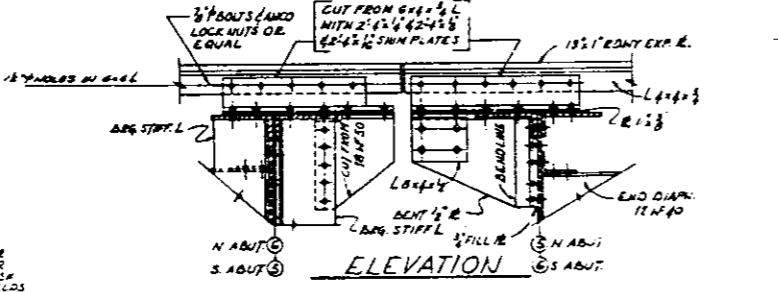
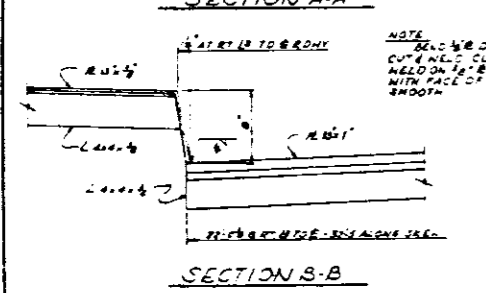
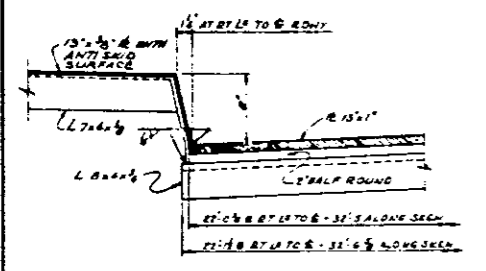
CITY OF CHICAGO
DEPARTMENT OF PUBLIC WORKS
BUREAU OF ENGINEERING
NORTHWEST ROUTE SUPERHIGHWAY
C. & N. W. RY. GRADE SEPARATION
W. KINZIE ST. TO W. HUBBARD ST.
SECTION 08024-2
GREEN ST. BRIDGE
STRUCTURAL STEEL PLAN & DETAILS
ALFRED BENECH & ASSOCIATES
111 W. JACKSON BLDG.
CHICAGO, ILLINOIS
CONSULTING ENGINEERS
SHEET NO. 97 OF 160 SHEETS
DATE JAN 9-1957



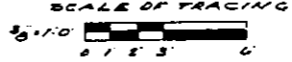
NOTE TO ERECTOR
DIMENSIONS IN PARALLELS (P) SHALL BE DECREASED BY 1/8" FOR EACH 15° RISE IN TERN ABOVE 50°, AND SHALL BE INCREASED AT THE SAME AMOUNT FOR EACH 15° DROP IN TERN BELOW 50°.



FOR EXPANSION GUARD GENERAL NOTES SEE SHEET 54
FOR DIMENSIONS AND DETAILS NOT SHOWN HERE SEE SHEETS 20, 27 & 29

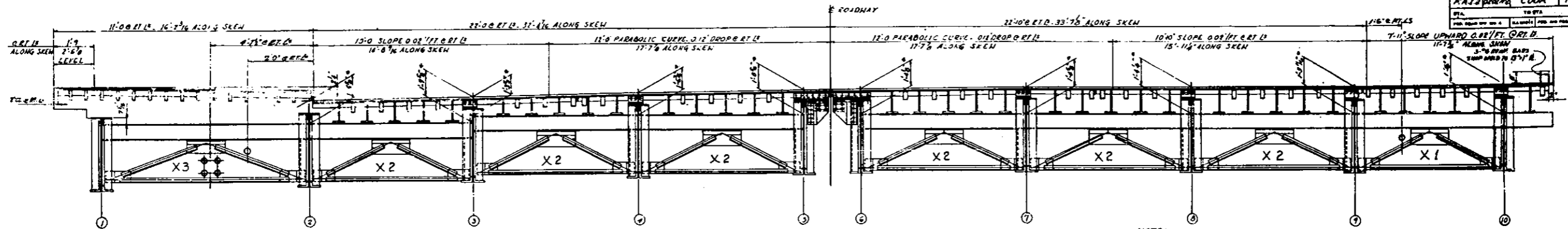


THE EXPANSION DEVICE SUPPORTS ROADWAY



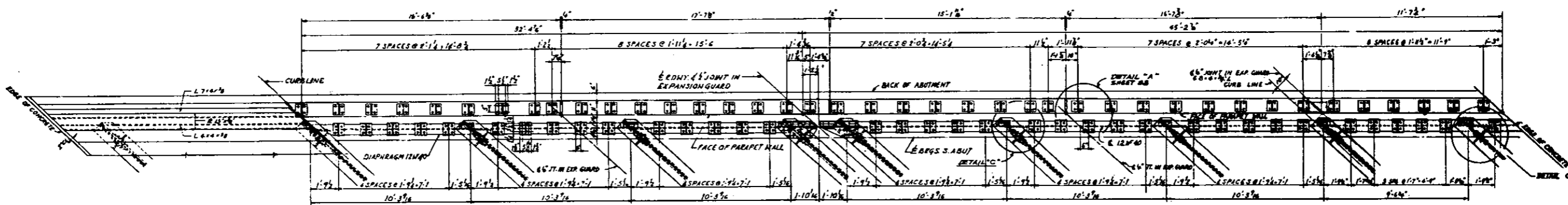
CITY OF CHICAGO
DEPARTMENT OF PUBLIC WORKS
BUREAU OF ENGINEERING
NORTHWEST ROUTE SUPER-HIGHWAY
C. & N.W. RY. GRADE SEPARATION
W. KINZIE ST. TO W. HUBBARD ST.
SECTION 0802A-2
GREEN ST. BRIDGE
STRUCTURAL STEEL DETAILS
ALFRED BENECH & ASSOCIATES
231 W. JACKSON BLDG.
CONSULTING ENGINEERS
CHICAGO, ILLINOIS
SHEET NO. 54 OF 160 SHEETS
DATE: JAN. 4, 1957

NO.	DESC.	QUANTITY	TOTAL	UNIT
1	RAIL JOINTS	COOK	160	1/16

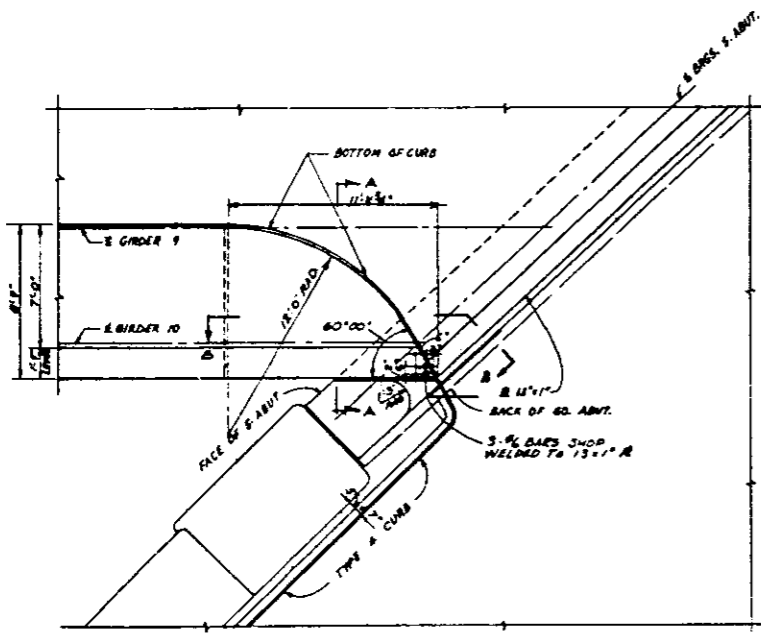


ELEVATION SOUTH ABUTMENT
SCALE: 3/8" = 1'-0"

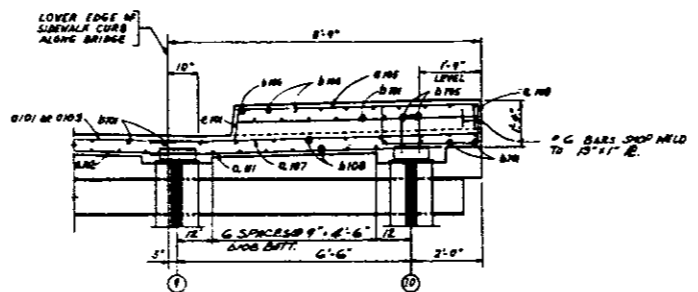
NOTE: DIMENSION NOTED THUS: 1'-3 1/2" REFERS TO THE VERTICAL DISTANCE MEASURED BETWEEN THE TOP OF THE WELDED JOINT AND THE TOP 15'-11" R AT THE FACE OF THE 4 1/2" x 1 1/2" C.



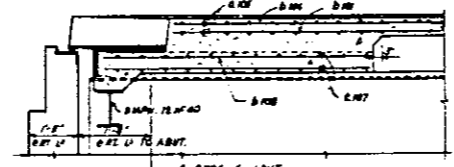
PLAN AT SOUTH ABUTMENT
SCALE: 3/8" = 1'-0"



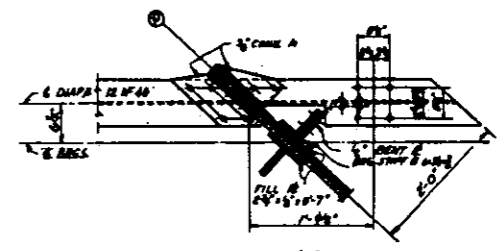
PLAN OF SIDEWALK SW CORNER
SCALE: 1/4" = 1'-0"
NOTE: SEE SHEET 56 FOR DIMENSIONS & DETAILS



SECTION A-A
SCALE: 1/2" = 1'-0"



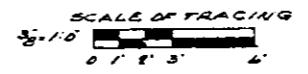
SECTION B-B
SCALE: 1/2" = 1'-0"



DETAIL C
SCALE: 1" = 1'-0"

FOR EXPANSION GUARD GENERAL NOTES SEE SHEET 54
FOR DIMENSIONS AND DETAILS NOT SHOWN HERE SEE SHEETS 56, 57 & 58

ESTIMATED WEIGHT FOR 2 COMPLETE GUARDS, INCLUDING SIDEWALK GUARDS FOR GREEN STREET BRIDGE-27,190



CITY OF CHICAGO
DEPARTMENT OF PUBLIC WORKS
BUREAU OF ENGINEERING
NORTHWEST ROUTE SUPERHIGHWAY
C. & N. W. RY. GRADE SEPARATION
W. KINZIE ST. TO W. HUBBARD ST.
SECTION 0804-2
GREEN ST. BRIDGE
STRUCTURAL STEEL DETAILS
ALFRED BENECH & ASSOCIATES CONSULTING ENGINEERS
111 W. JACKSON BLDG. CHICAGO, ILLINOIS
SHEET NO. 59 OF 60 SHEETS DATE: JAN 9, 1927