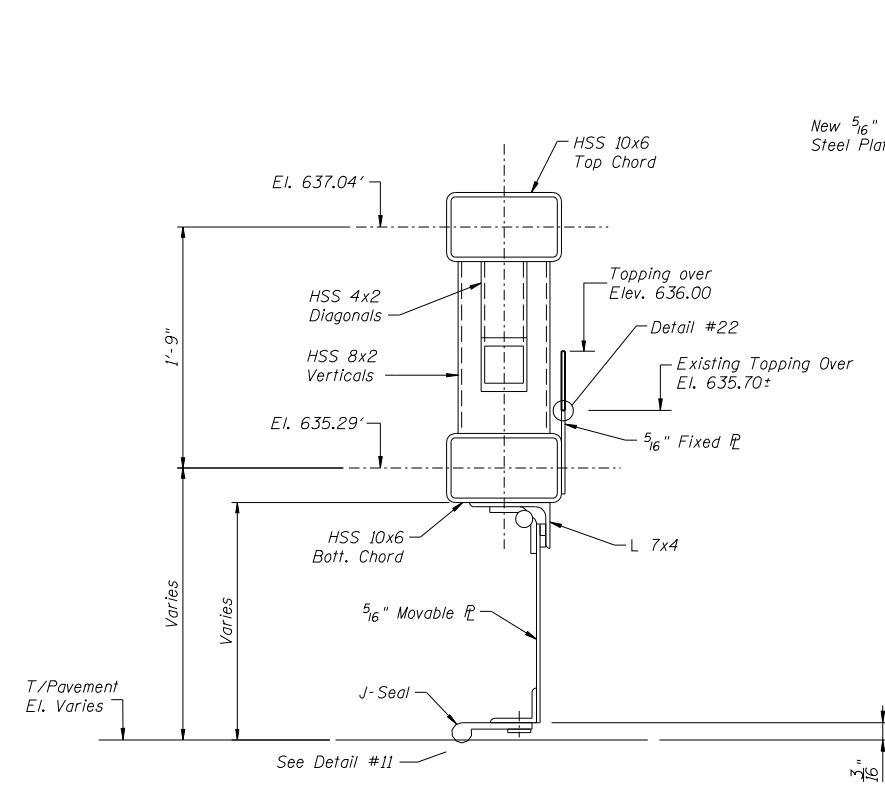
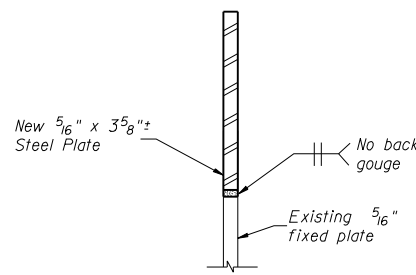


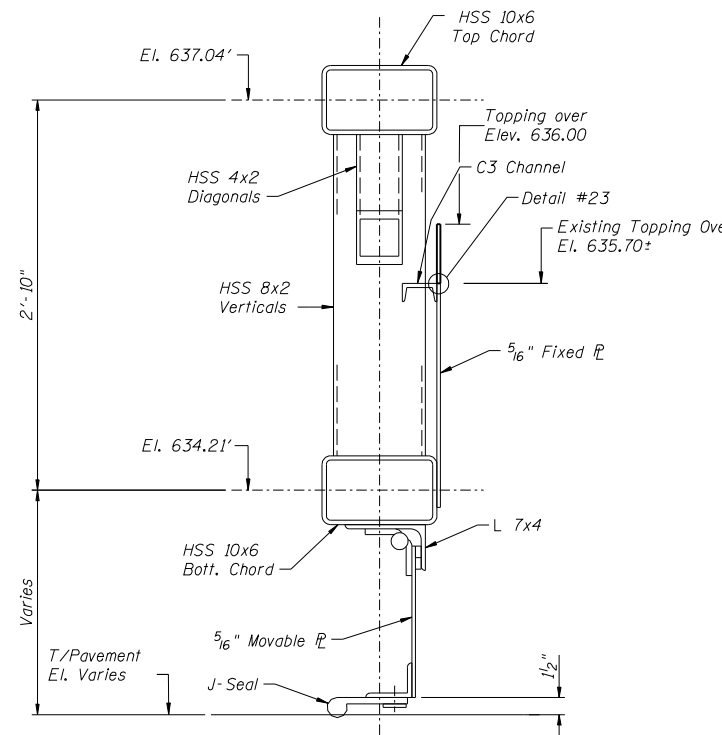
ELEVATION A-A - LOOKING SOUTH



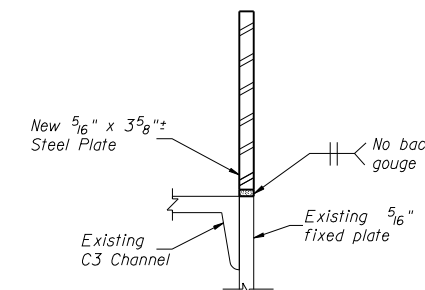
SECTION B-B - EAST LEAF NEAR CENTER OF RAND ROAD



DETAIL #22



SECTION C-C - WEST LEAF AT GUTTER LINE



DETAIL #23

PAINTING NOTES:
The paint shall match existing gate paint system and color. See Special Provisions.
Cost included with Furnishing and Erecting Structural Steel.

BILL OF MATERIAL

Furnishing and Erecting Structural Steel	Pound	280
--	-------	-----

SCALE: NONE

DESIGNED BY: TMM
DRAWN BY: JUF
CHECKED BY: GMS
CHECKED BY: GMS
9/1/2011
2:25:37 PM
O:\OwrProj\mpl\Projects\Rand Park Pump Station Paving Block Repair\DN\Plan Sheets\Rand Road Flood Gate Closure Structure